

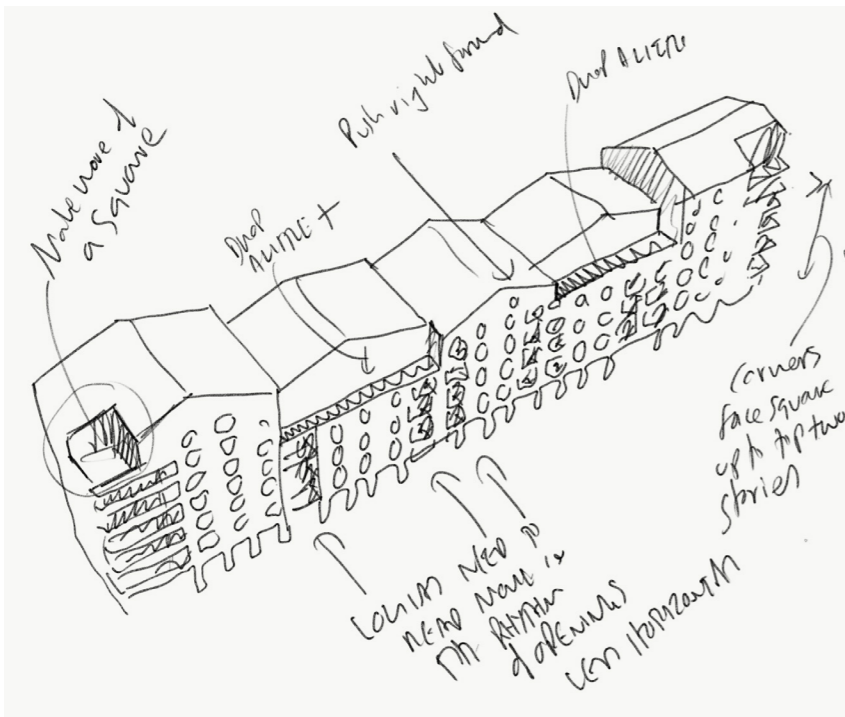
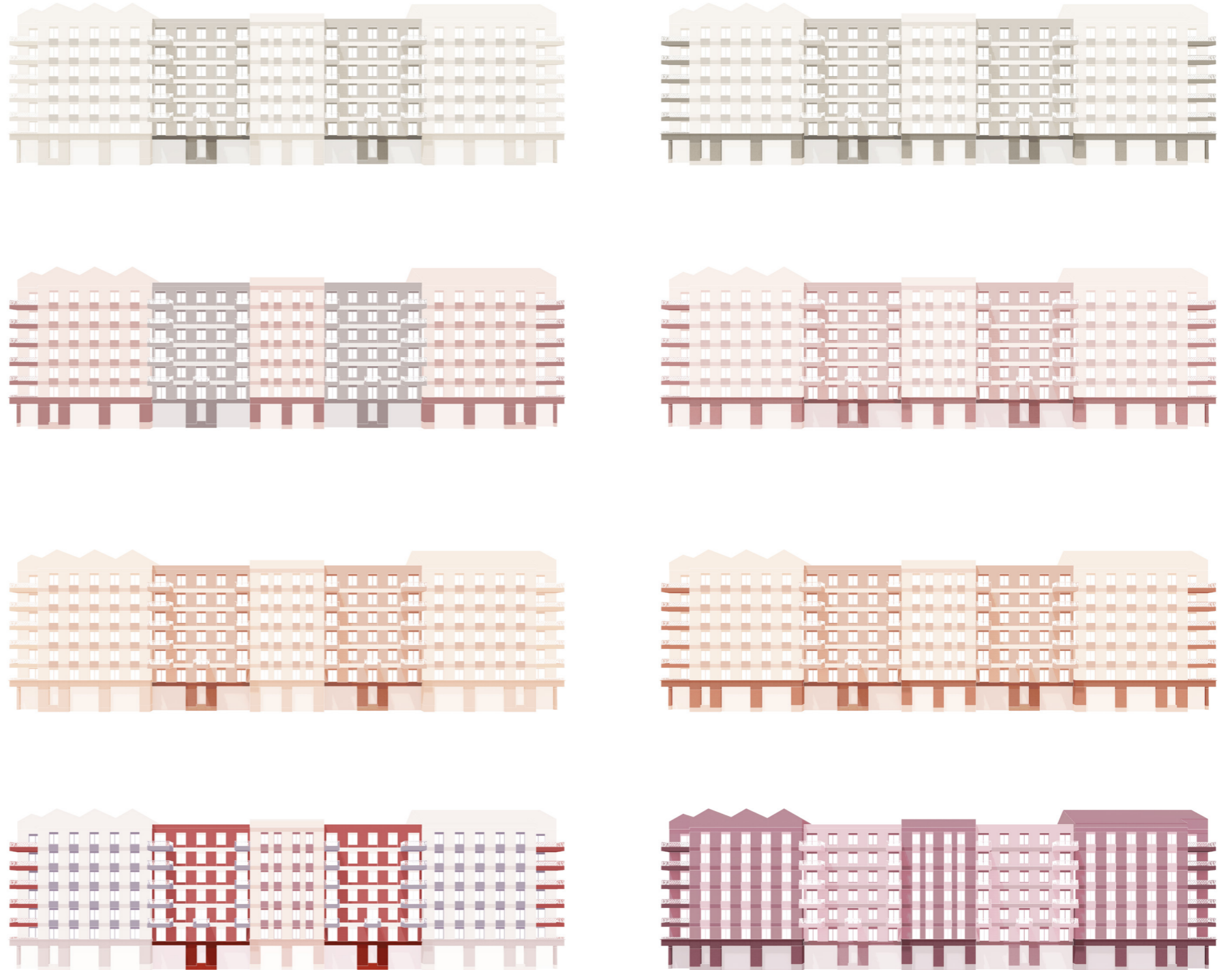
Massing Development

Collection of Buildings

Colour

Progressive studies explored colour treatment to the buildings and how these may react to the surrounding context and harmoniously unite the series of x5 volumes. Notably, subtle shifts in colour tone between the insets and blocks were deemed to be the most successful, rather than wholesale changes in hue.

The red and orange tones were deemed to offer the most success in responding to the current vibrancy of Aberfeldy Street. It could provide a palette that whilst brightly saturated, has numerous complimentary hues that could cope with subtle variations across the facade. Notably, they are also closest to natural clay tones and subsequently provide textures in keeping with the local brickwork of the area.



Sketch development of building volumes

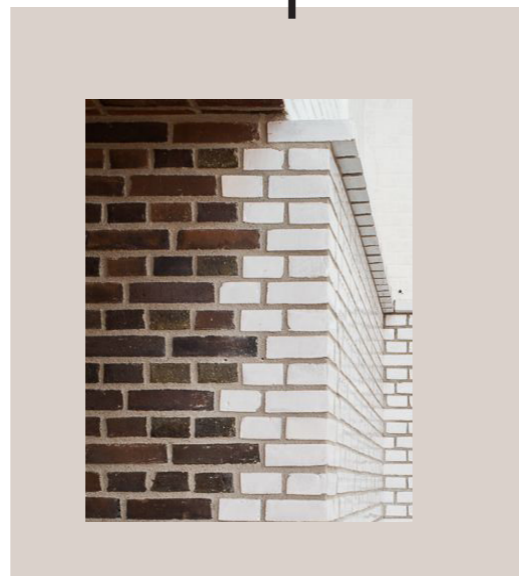
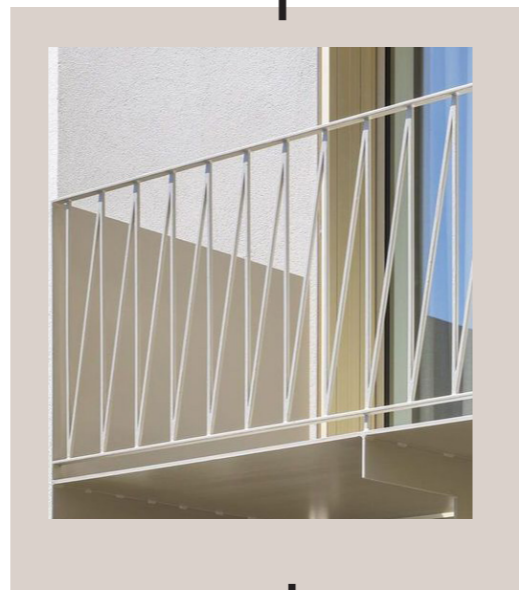
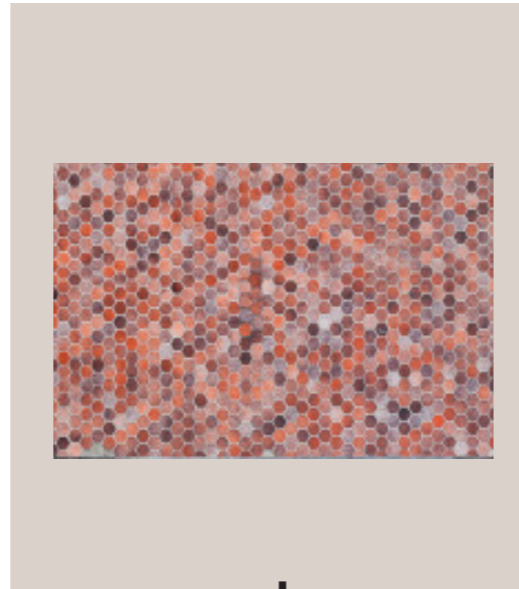
Series of colour studies for the facade response

Massing Development

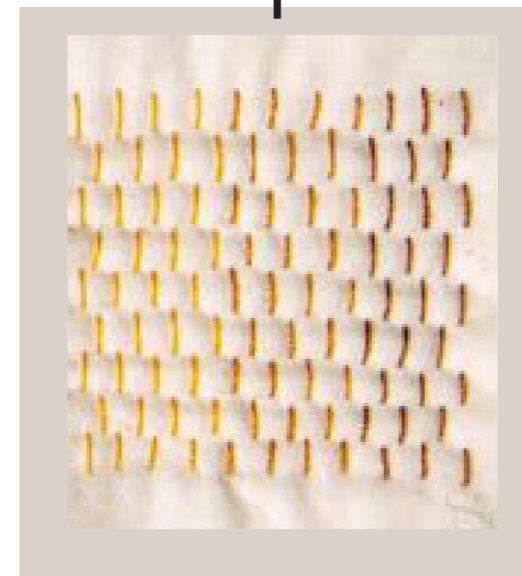
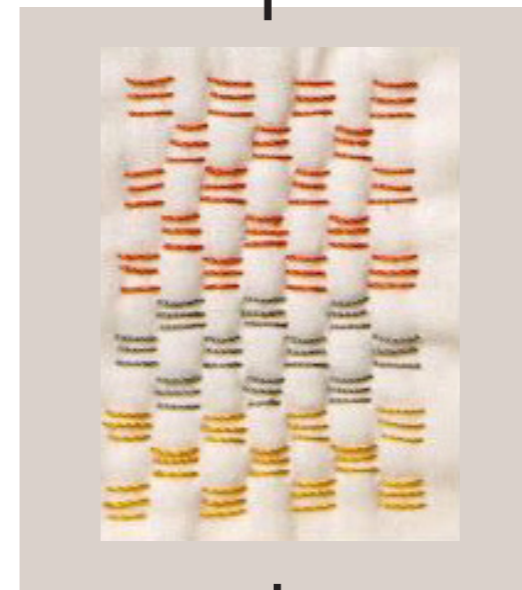
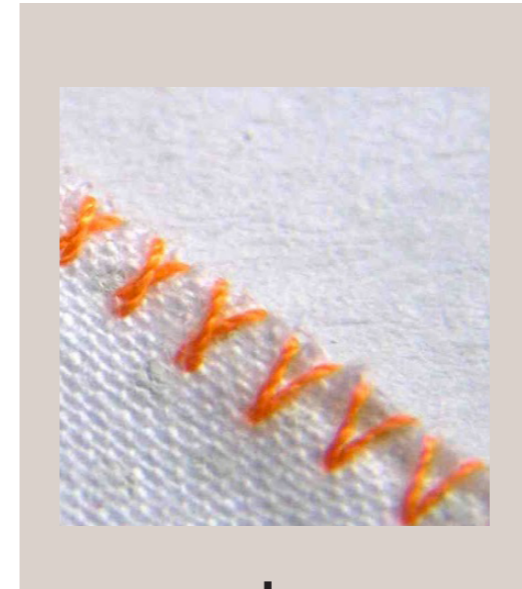
Stitching the Facade

Detail + Banding

For the façade response, a solution was required that could be harmonious with the collection of buildings and to provide a degree of consistency to the changing volumes along the street. To achieve this, a 'kit of parts' was speculated, enabling a select number of treatments to be layered across the envelope to provide ornament and expression. This notion of a kit was important in defining a series of rules and ensuring an elemental language could be used to subtly change colour or expression where required. Like the principles of Kantha stitching, a rhythmic system would be in order whilst changing in colour to visually animate. Studies explored how these elemental motifs could be applied on the balustrades and window cills, whilst allowing the primary brickwork 'fabric' to remain consistent. Within this a sense of consistent banding would be prevalent, subtly providing a series of horizontal datums that would unite the massing volumes and allow the roof profiles to flourish.



Material References



Kantha Stitches



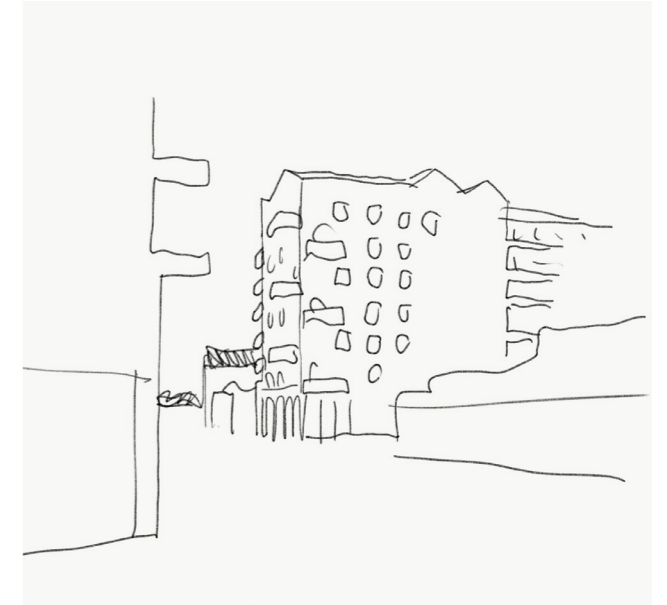
Facade tests

Massing Development

Gable Development

Composition

As the design for the roof forms evolved, so did the massing and façade composition. Particularly at the gable ends where several conditions come to a confluence. These are notably exposed to the public realm and adjacent buildings alike, with iterations of balconies and windows around the corners enabling a break in the vertical rhythm to articulate a playful, yet refined animation. The corner balcony to Aberfeldy Street in contrast, is indented to the massing, creating shelter whilst also enabling a slender profile to the end elevation. The sense of movement achieved in the façade strikes a commonality with the balconies / façade of Plot F, whilst also mimicking rich red colour tones to provide a unified impression to the street scene.



Sketch development to gable ends of H1



Historic precedent image of East London docks



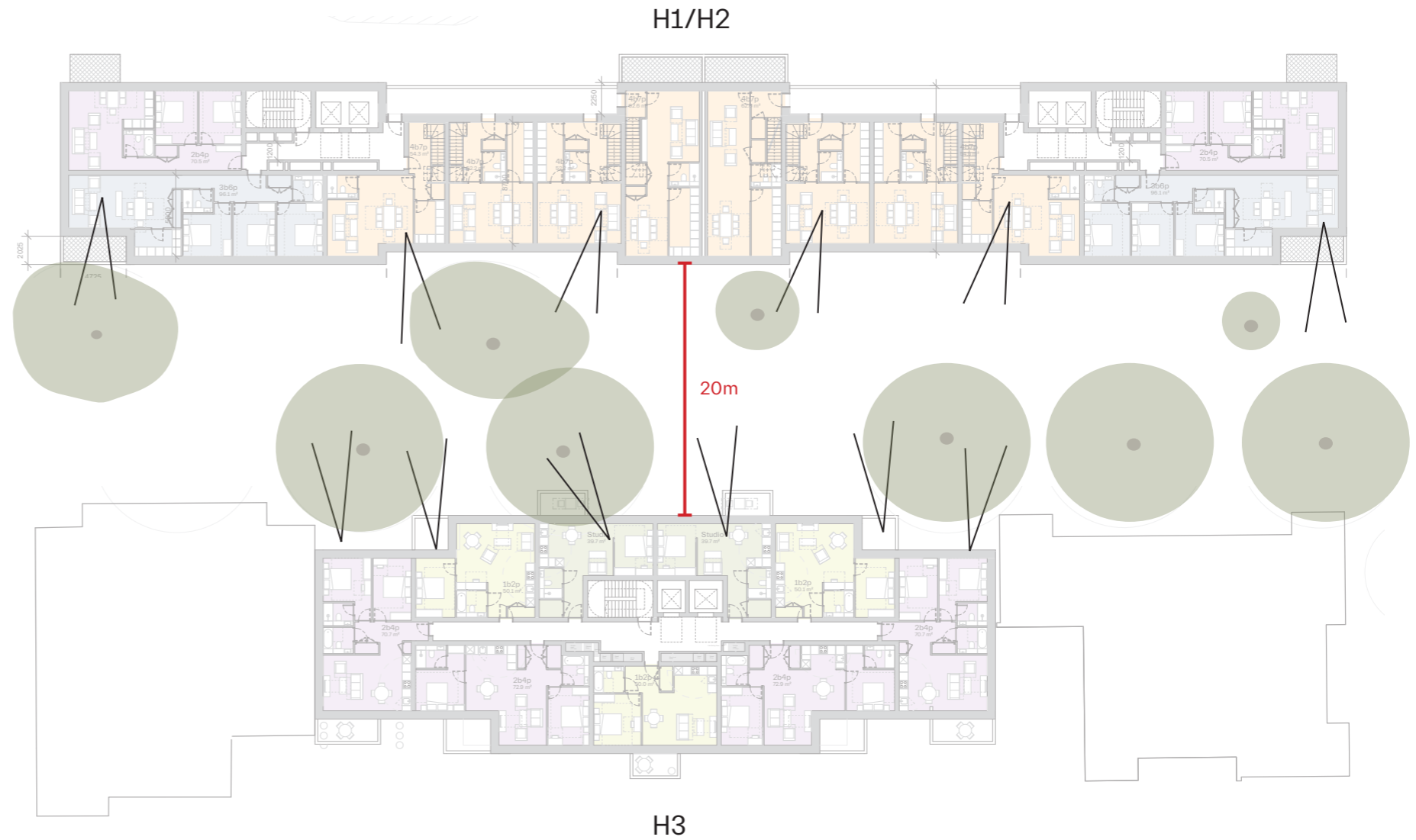
Proposed gable end to H1 as seen from Plot F

Massing Development

Existing Trees

Whilst interrogating the massing response, considerations were made to the internal experience of the residences and how balconies and openings would be arranged along the façade length. Of priority was to consider the public vs private adjacencies and how design solutions could aid a sense of separation for the successful functionality of both. The series of mature trees to Aberfeldy Street became of notable influence, with studies exploring at what locations, seasons and heights these would be impactful to the internal views. Whilst internal spaces could experience the sense of living within a beautiful, green canopy, this also provided natural screening and privacy.

Subsequently, the proposed balconies have employed a small upstand to the balustrade and any requirement for fully solid surrounds disregarded. Therefore, unwanted views can be partially protected from the street angle below, whilst also utilising the trees to aid privacy and conceal direct views across the street between H1/2 and H3.



Existing tree positions on Aberfeldy Street



April



July



March



Level 06- Summer



Level 03- Summer



Level 01- Summer