

5.2. The Healthy Street

Key public spaces

Overview

5.2.30. Abbott Road (the Healthy Street) connects the key public open spaces of Leven Road Open Space, Braithwaite Park, Millennium Green, Jolly's Green and the proposed Highland Place.

5.2.31. Leven Road Open Space and Braithwaite Park are part of the Phase A Detailed Proposals, and will be important improved green spaces delivered early in the construction phases.

5.2.32. Millennium Green is outside of the application boundary but **must** to be considered within the design of any nearby public realm.

5.2.33. Highland Place is a key proposed public open space at the centre of Aberfeldy Village Masterplan, and a gateway to the underpass crossing the A12 linking the proposed development with Jolly's Green and west Poplar.

5.2.34. Jolly's Green is an improved existing green space, including a segregated footway and cycleway connection between Aberfeldy and West Poplar via the Underbridge. Both the Underbridge and Slip Road will be lively connecting spaces activated by play, workshops, seating and the activity of the associated green spaces.

Braithwaite Park

5.2.35. The identity of Braithwaite Park is 'The Gardens' for the neighbourhood with a play area, flowers, and areas of lawn, seating and picnic tables to rest, relax and socialise.

Detailed information on can be found in Chapter 7 "Public realm" of the Design and Access Statement: Detailed Proposals to be delivered as part of the first phase of the development.



Fig.129 Illustrative aerial view of Braithwaite Park



Fig.128 Illustrative view of Braithwaite Park and the dedicated play area, looking south from the entrance on the corner of Abbott Road and Benledi Road

Leven Road Open Space

5.2.36. Leven Road Open Space identity is 'The Hub' for sports, activity, fitness, and adventurous play.

Detailed information on can be found in Chapter 7. "Public realm" of the "Design and Access Statement: Detailed Proposals" to be delivered as part of the first phase of the development.



Fig.130 Illustrative aerial view of Leven Road Open Space proposals



Fig.131 Illustrative View of Leven Road Open Space and the northern gym area with the MUGA in background, looking south from the entrance on the corner of Abbott Road

Millennium Green

5.2.37. The identity for Millennium Green is as a 'Community Green' at the heart of Aberfeldy: a place for events and fun days, but also an everyday green space for rest and picnics, that is playable.

5.2.38. The delivery of the Millennium Green improvements sits outside the application red line boundary but will be subject to a separate Section 106 Agreement.



Fig.132 Illustrative aerial view of Millennium Green proposals



Fig.133 Illustrative view of Millennium Green flexible community space, looking east from the corner of Benledi Road and Aberfeldy Street

5.2. The Healthy Street

Highland Place

5.2.39. Highland Place is the primary public open space at the centre of Aberfeldy, providing both recreational and biodiversity value.

5.2.40. The central valley path passes through the park, allowing movement across the A12 to Jolly's Green and beyond. Highland Place **should** be surfaced in coloured asphalt to match all primary paths across Aberfeldy Parks. If space and design allows. The route includes a separated dedicated cycle route.

5.2.41. The valley path **should** be installed to gradients compliant to British Standard (BS) BS8300:2018 Design of an Accessible and Inclusive Built Environment.

5.2.42. Clear sightlines through the underpass to the other side **must** be provided for safety.

5.2.43. Opportunity for activity **should** be clustered to the west of the open space around the entrance to the underbridge. This **could** include climbing, play and terraced seating.

5.2.44. Amenity lawns **must** be provided for the flexibility of community daily activities. These **should** be framed by planting for comfort and to create a sense of distinct identity from surrounding spaces

5.2.45. Routes across Highland Place to allow the continuation of pedestrian routes north-south, such as Community Lane, **must** be provided

5.2.46. Space **should** be provided for gathering, and as an entrance to the main entrance to Building B3

5.2.47. Space around Building B3 **must** be sufficient for spill out activity and pedestrian movement.

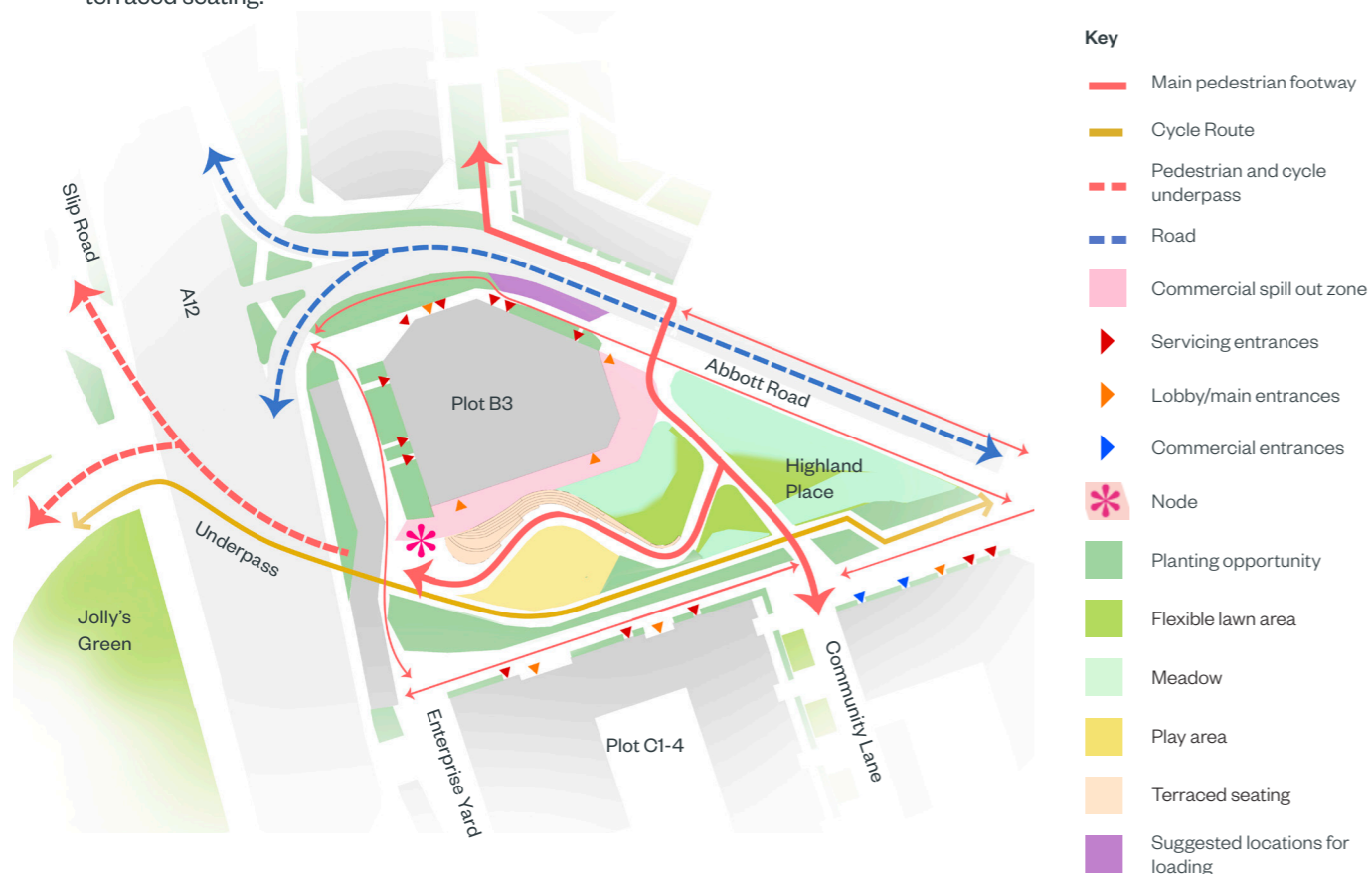


Fig.134 Highland Place - landscape concept plan



Fig.135 View 01 Illustrative view of Highland Place and the approach to the proposed Underbridge

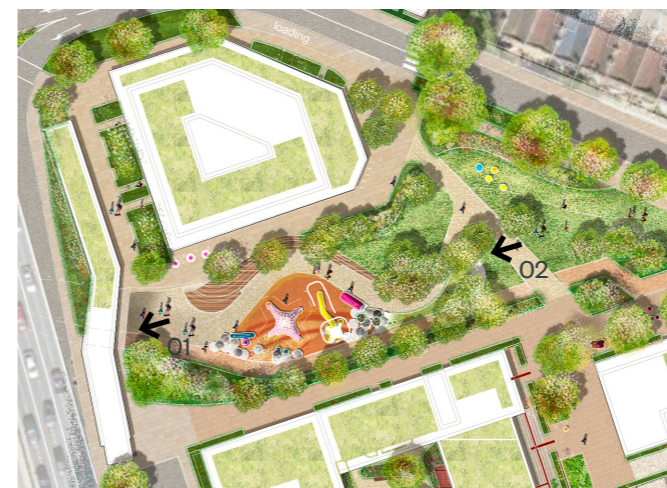


Fig.136 Highland Place - illustrative masterplan extract



Fig.138 Illustrative aerial view of Highland Place



Fig.137 View 02 Highland Place looking towards the underbridge illustrative visualisation



Fig.139 Highland Place to Jolly's Green walk through looking from underbridge to Slip Road illustrative visualisation