

# DAYLIGHT IMPACTS ON 45-47 ABBOTT RD CONSENTED V MAX PARAMETER

Vertical Sky Component (VSC) - No Sky Line (NSL)

FLOOR	ROOM	ROOM USE	WINDOW	VERTICAL SKY COMPONENT				NO SKY LINE			
				CONSENTED	MAX PARAMETER	LOSS	%	CONSENTED	MAX PARAMETER	LOSS	%
45-47 ABBOTT RD											
GROUND FLOOR	1	L/K/D	1E1	19.1	19.1	0.0	0.0	66.3	66.3	0.0	0.0
			1S1	3.0	3.0	0.0	0.0				
			1W1	6.1	6.1	0.0	0.0				
	2	L/K/D	2E1	18.8	18.8	0.0	0.0	73.4	73.4	0.0	0.0
			2N1	4.3	4.3	0.0	0.0				
			2W1	6.4	6.4	0.0	0.0				
	3	L/K/D	3E1	18.7	18.7	0.0	0.0	63.2	63.2	0.0	0.0
			3S1	2.3	2.3	0.0	0.0				
			3W1	6.4	6.4	0.0	0.0				
	4	BEDROOM	4E1	18.6	18.6	0.0	0.0	92.7	92.7	0.0	0.0
4N1			4.5	4.5	0.0	0.0					
5	L/K/D	5S1	26.4	23.1	3.3	12.5	81.4	68.3	13.1	16.1	
FIRST FLOOR	6	LIVING ROOM	6W1	31.6	31.5	0.1	0.3	96.8	96.8	0.0	0.0
			6W2	29.7	29.7	0.0	0.0				
	7	BEDROOM	7E1	28.9	28.9	0.0	0.0	100.0	100.0	0.0	0.0
	8	BEDROOM	8E1	28.7	28.7	0.0	0.0	100.0	100.0	0.0	0.0
	9	BEDROOM	9E1	28.6	28.6	0.0	0.0	96.2	96.2	0.0	0.0
			10E1	26.2	26.2	0.0	0.0				
	10	BEDROOM	10E1	26.2	26.2	0.0	0.0	99.4	99.4	0.0	0.0
			10E2	28.3	28.3	0.0	0.0				
	11	LIVING ROOM	11S1	28.0	24.6	3.4	12.1	99.6	99.6	0.0	0.0
			11W1	17.6	17.2	0.4	2.3				
	12	BEDROOM	12N1	16.3	16.3	0.0	0.0	98.5	98.5	0.0	0.0
			12S1	17.1	14.0	3.1	18.1				
	13	LIVING ROOM	13W1	29.3	29.3	0.0	0.0	97.5	97.5	0.0	0.0
13W2			30.2	30.2	0.0	0.0					
SECOND FLOOR	14	BEDROOM	14W1	35.1	35.0	0.1	0.3	96.8	96.8	0.0	0.0
			14W2	32.6	32.6	0.0	0.0				
	15	BEDROOM	15E1	31.5	31.5	0.0	0.0	100.0	100.0	0.0	0.0
	16	BEDROOM	16E1	31.3	31.3	0.0	0.0	100.0	100.0	0.0	0.0
	17	BEDROOM	17E1	30.8	30.8	0.0	0.0	91.4	91.4	0.0	0.0
	18	L/K/D	18N1	23.5	23.5	0.0	0.0	100.0	100.0	0.0	0.0
			18S1	21.9	18.8	3.1	14.2				
			18S2	29.8	26.5	3.3	11.1				
			18W1	28.3	28.0	0.3	1.1				
	19	BEDROOM	19W1	25.1	25.1	0.0	0.0	93.1	93.1	0.0	0.0
20	BEDROOM	20W1	32.4	32.4	0.0	0.0	97.5	97.5	0.0	0.0	
		20W2	34.7	34.7	0.0	0.0					
THIRD FLOOR	21	BEDROOM	21E1	26.6	26.6	0.0	0.0	99.7	99.7	0.0	0.0
			21W1	34.2	34.2	0.0	0.0				
	22	BEDROOM	22E1	33.1	33.1	0.0	0.0	96.6	96.6	0.0	0.0
			22E2	30.7	30.7	0.0	0.0				
	23	L/K/D	23S1	31.6	28.4	3.2	10.1	100.0	99.8	0.2	0.2
			23W1	37.6	37.3	0.3	0.8				
			23W2	37.6	37.2	0.4	1.1				

# DAYLIGHT IMPACTS ON 45-47 ABBOTT RD CONSENTED V MAX PARAMETER

Average Daylight Factor (ADF) - Annual Probable Sunlight Hours (APSH)

AVERAGE DAYLIGHT FACTOR						
FLOOR	ROOM	ROOM USE	CONSENTED	MAX PARAMETER	LOSS	%
45-47 ABBOTT RD						
GROUND FLOOR	1	L/K/D	1.2	1.2	0.0	0.0
	2	L/K/D	1.2	1.2	0.0	0.0
	3	L/K/D	0.9	0.9	0.0	0.0
	4	BEDROOM	0.9	0.9	0.0	0.0
	5	L/K/D	1.2	1.0	0.2	16.7

ANNUAL PROBABLE SUNLIGHT HOURS (ROOM)								
FLOOR	ROOM	ROOM USE	ROOM CONSENTED		ROOM MAX PARAMETER		TOTAL % LOSS	WINTER % LOSS
			TOTAL	WINTER	TOTAL	WINTER		
45-47 ABBOTT RD								
GROUND FLOOR	1	L/K/D	38	7	38	7	0.0	0.0
	2	L/K/D	32	6	32	6	0.0	0.0
	3	L/K/D	30	5	30	5	0.0	0.0
	4	BEDROOM	28	5	28	5	0.0	0.0
	5	L/K/D	59	12	54	8	8.5	33.3

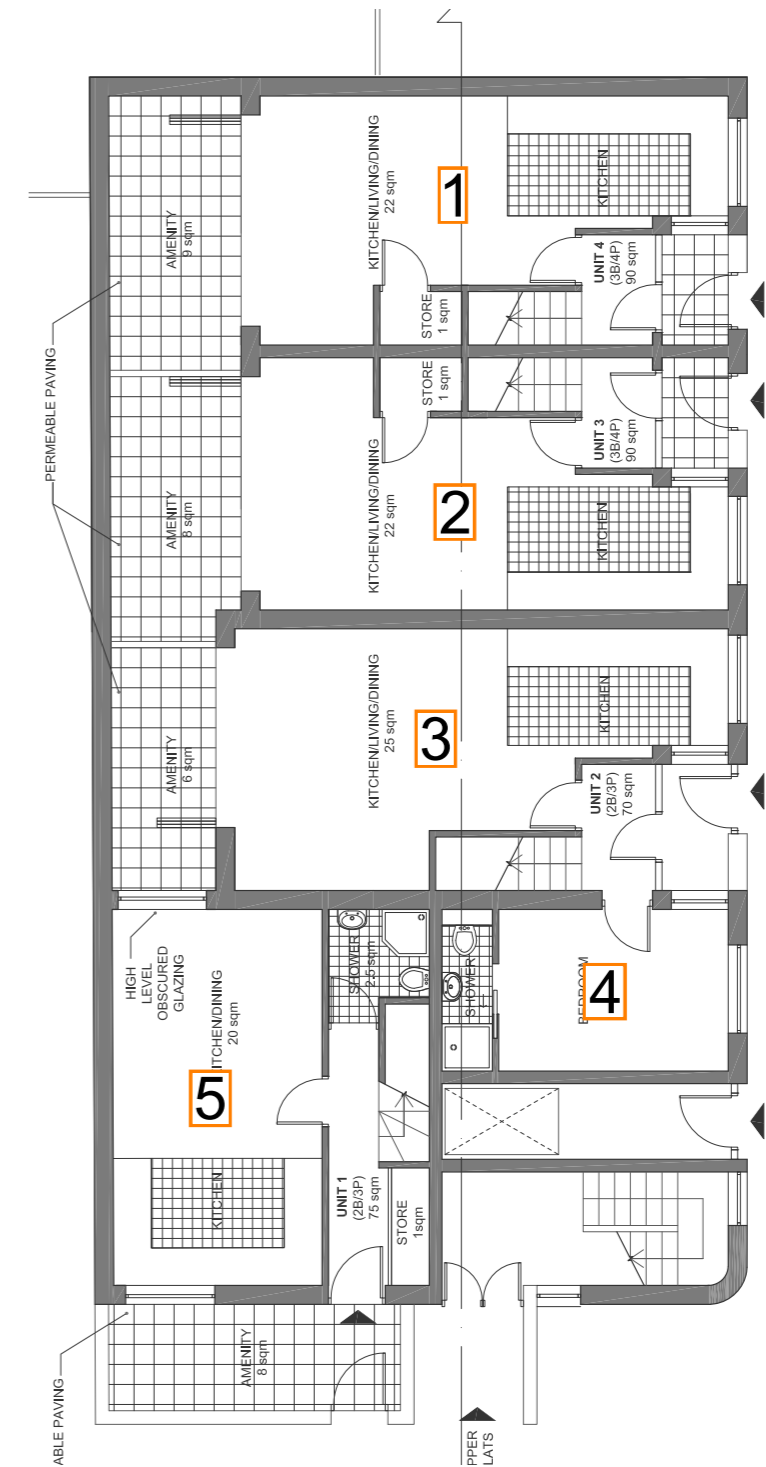


Fig. 01: Floor Plan

Table 02: Assessment Data

AVERAGE DAYLIGHT FACTOR						
FLOOR	ROOM	ROOM USE	CONSENTED	MAX PARAMETER	LOSS	%
FIRST FLOOR	6	LIVING ROOM	2.9	2.9	0.0	0.0
	7	BEDROOM	3.0	3.0	0.0	0.0
	8	BEDROOM	3.0	3.0	0.0	0.0
	9	BEDROOM	1.9	1.8	0.1	5.3
	10	BEDROOM	2.9	2.9	0.0	0.0
	11	LIVING ROOM	5.1	4.7	0.4	7.8
	12	BEDROOM	3.0	2.7	0.3	10.0
	13	LIVING ROOM	2.8	2.7	0.1	3.6

ANNUAL PROBABLE SUNLIGHT HOURS (ROOM)								
FLOOR	ROOM	ROOM USE	ROOM CONSENTED		ROOM MAX PARAMETER		TOTAL % LOSS	WINTER % LOSS
			TOTAL	WINTER	TOTAL	WINTER		
FIRST FLOOR	6	LIVING ROOM	N/A	N/A	N/A	N/A	N/A	N/A
	7	BEDROOM	47	10	47	10	0.0	0.0
	8	BEDROOM	45	9	45	9	0.0	0.0
	9	BEDROOM	45	9	45	9	0.0	0.0
	10	BEDROOM	43	8	43	8	0.0	0.0
	11	LIVING ROOM	64	14	61	11	4.7	21.4
	12	BEDROOM	31	9	26	4	16.1	55.6
	13	LIVING ROOM	N/A	N/A	N/A	N/A	N/A	N/A

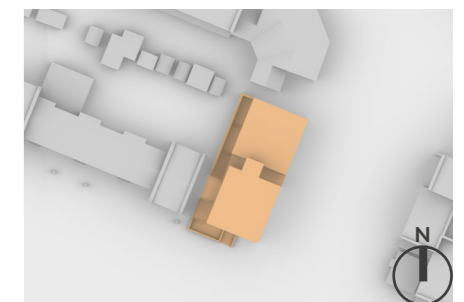
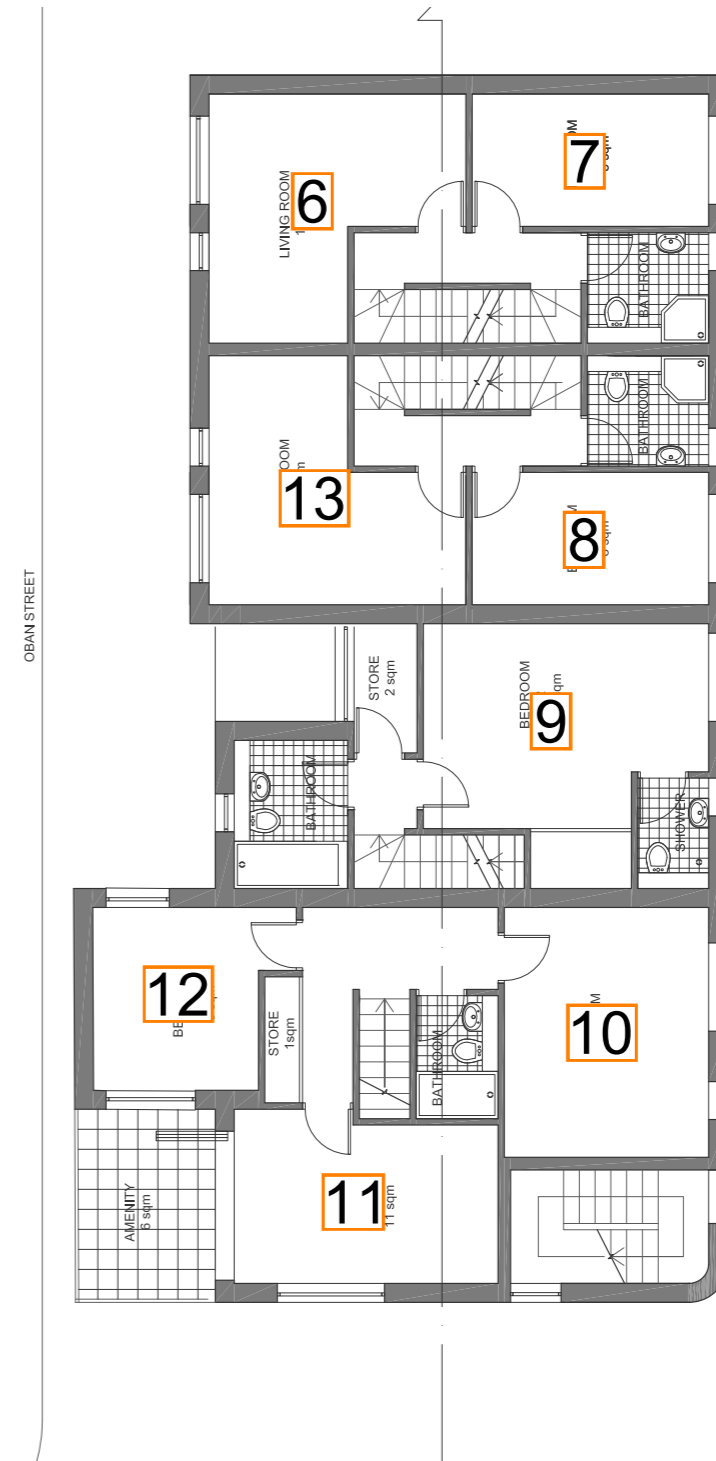


Fig. 02: Floor Plan

Table 03: Assessment Data

AVERAGE DAYLIGHT FACTOR						
FLOOR	ROOM	ROOM USE	CONSENTED	MAX PARAMETER	LOSS	%
SECOND FLOOR	14	BEDROOM	3.2	3.2	0.0	0.0
	15	BEDROOM	3.2	3.2	0.0	0.0
	16	BEDROOM	3.2	3.2	0.0	0.0
	17	BEDROOM	3.1	3.1	0.0	0.0
	18	L/K/D	4.1	3.9	0.2	4.9
	19	BEDROOM	0.8	0.8	0.0	0.0
	20	BEDROOM	3.2	3.2	0.0	0.0

ANNUAL PROBABLE SUNLIGHT HOURS (ROOM)								
FLOOR	ROOM	ROOM USE	ROOM CONSENTED		ROOM MAX PARAMETER		TOTAL % LOSS	WINTER % LOSS
			TOTAL	WINTER	TOTAL	WINTER		
SECOND FLOOR	14	BEDROOM	N/A	N/A	N/A	N/A	N/A	N/A
	15	BEDROOM	50	12	50	12	0.0	0.0
	16	BEDROOM	51	13	51	13	0.0	0.0
	17	BEDROOM	48	11	48	11	0.0	0.0
	18	L/K/D	71	19	66	14	7.0	26.3
	19	BEDROOM	N/A	N/A	N/A	N/A	N/A	N/A
	20	BEDROOM	N/A	N/A	N/A	N/A	N/A	N/A

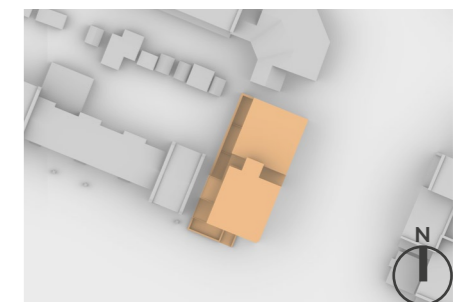


Fig. 03: Floor Plan

Table 04: Assessment Data

AVERAGE DAYLIGHT FACTOR						
FLOOR	ROOM	ROOM USE	CONSENTED	MAX PARAMETER	LOSS	%
THIRD FLOOR	21	BEDROOM	2.6	2.6	0.0	0.0
	22	BEDROOM	3.7	3.8	-0.1	-2.7
	23	L/K/D	6.3	6.1	0.2	3.2

ANNUAL PROBABLE SUNLIGHT HOURS (ROOM)								
FLOOR	ROOM	ROOM USE	ROOM CONSENTED		ROOM MAX PARAMETER		TOTAL % LOSS	WINTER % LOSS
			TOTAL	WINTER	TOTAL	WINTER		
THIRD FLOOR	21	BEDROOM	54	5	54	5	0.0	0.0
	22	BEDROOM	52	13	52	13	0.0	0.0
	23	L/K/D	72	20	68	16	5.6	20.0

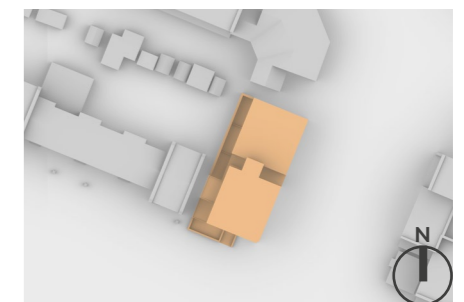
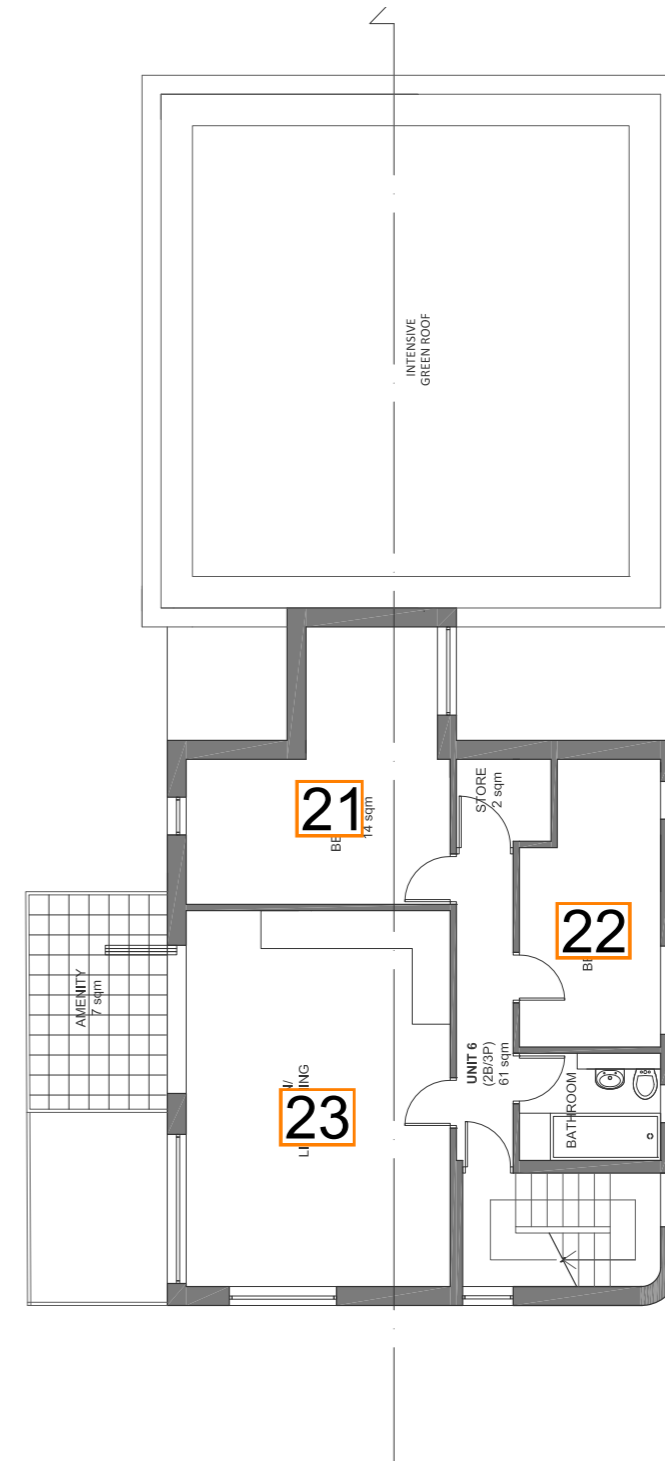


Fig. 04: Floor Plan

# DAYLIGHT IMPACTS ON ISLAY WHARF CONSENTED V MAX PARAMETER

Vertical Sky Component (VSC) - No Sky Line (NSL)

FLOOR	FLAT	ROOM	ROOM USE	WINDOW	VERTICAL SKY COMPONENT				NO SKY LINE			
					CONSENTED	MAX PARAMETER	LOSS	%	CONSENTED	MAX PARAMETER	LOSS	%
ISLAY WHARF												
LEVEL 1		500	BEDROOM	500S1	18.2	17.2	1.0	5.5	95.5	95.5	0.0	0.0
				500S2	17.4	16.5	0.9	5.2				
		501	BEDROOM	501S1	16.7	15.5	1.2	7.2	72.0	72.0	0.0	0.0
		502	L/K/D	502S1	13.5	11.7	1.8	13.3	99.1	99.1	0.0	0.0
				502W1	25.0	18.7	6.3	25.2				
				502W2	31.0	25.0	6.0	19.4				
				502W3	33.0	27.3	5.7	17.3				
		503	L/K/D	503N1	13.5	13.5	0.0	0.0	98.9	98.9	0.0	0.0
				503W1	23.5	17.4	6.1	26.0				
				503W2	23.8	17.6	6.2	26.1				
				503W3	27.9	21.3	6.6	23.7				
		504	BEDROOM	504N1	9.5	9.5	0.0	0.0	42.7	42.7	0.0	0.0
		505	BEDROOM	505N1	14.8	14.8	0.0	0.0	88.3	88.3	0.0	0.0
				505N2	13.2	13.2	0.0	0.0				
LEVEL 2		506	BEDROOM	506S1	18.1	17.1	1.0	5.5	95.8	95.8	0.0	0.0
				506S2	18.5	17.7	0.8	4.3				
		507	BEDROOM	507S1	12.7	11.5	1.2	9.4	69.2	69.2	0.0	0.0
		508	L/K/D	508S1	19.9	18.1	1.8	9.0	99.8	99.6	0.2	0.2
				508W1	29.5	24.4	5.1	17.3				
				508W2	25.8	21.0	4.8	18.6				
				508W3	26.6	22.1	4.5	16.9				
		509	L/K/D	509N1	11.8	11.8	0.0	0.0	98.9	98.9	0.0	0.0
				509W1	32.5	27.6	4.9	15.1				
				509W2	30.9	25.9	5.0	16.2				
				509W3	25.5	20.1	5.4	21.2				
		510	BEDROOM	510N1	14.2	14.2	0.0	0.0	53.8	53.8	0.0	0.0
		511	BEDROOM	511N1	16.2	16.2	0.0	0.0	89.2	89.2	0.0	0.0
				511N2	16.0	16.0	0.0	0.0				
LEVEL 3		512	BEDROOM	512S1	21.1	20.2	0.9	4.3	95.7	95.7	0.0	0.0
				512S2	20.2	19.5	0.7	3.5				
		513	BEDROOM	513S1	19.7	18.6	1.1	5.6	72.9	72.9	0.0	0.0
		514	L/K/D	514S1	16.1	14.3	1.8	11.2	99.9	99.9	0.0	0.0
				514W1	27.1	23.4	3.7	13.7				
				514W2	33.1	29.7	3.4	10.3				
				514W3	34.9	31.6	3.3	9.5				
		515	L/K/D	515N1	16.8	16.8	0.0	0.0	99.1	99.1	0.0	0.0
				515W1	26.2	22.5	3.7	14.1				
				515W2	26.2	22.5	3.7	14.1				
				515W3	30.3	26.4	3.9	12.9				
		516	BEDROOM	516N1	12.1	12.1	0.0	0.0	45.6	45.6	0.0	0.0
		517	BEDROOM	517N1	17.2	17.2	0.0	0.0	85.9	85.9	0.0	0.0
				517N2	16.1	16.1	0.0	0.0				

# DAYLIGHT IMPACTS ON ISLAY WHARF CONSENTED V MAX PARAMETER

Average Daylight Factor (ADF) - Annual Probable Sunlight Hours (APSH)

AVERAGE DAYLIGHT FACTOR						
FLOOR	ROOM	ROOM USE	CONSENTED	MAX PARAMETER	LOSS	%
ISLAY WHARF						
LEVEL 1	500	BEDROOM	2.4	2.3	0.1	4.2
	501	BEDROOM	1.8	1.7	0.1	5.6
	502	L/K/D	4.7	3.8	0.9	19.1
	503	L/K/D	4.1	3.2	0.9	22.0
	504	BEDROOM	1.0	1.0	0.0	0.0
	505	BEDROOM	1.8	1.8	0.0	0.0

ANNUAL PROBABLE SUNLIGHT HOURS (ROOM)								
FLOOR	ROOM	ROOM USE	ROOM CONSENTED		ROOM MAX PARAMETER		TOTAL % LOSS	WINTER % LOSS
			TOTAL	WINTER	TOTAL	WINTER		
ISLAY WHARF								
LEVEL 1	500	BEDROOM	50	13	49	12	2.0	7.7
	501	BEDROOM	42	13	41	12	2.4	7.7
	502	L/K/D	54	14	46	11	14.8	21.4
	503	L/K/D	44	14	35	8	20.5	42.9
	504	BEDROOM	N/A	N/A	N/A	N/A	N/A	N/A
	505	BEDROOM	N/A	N/A	N/A	N/A	N/A	N/A

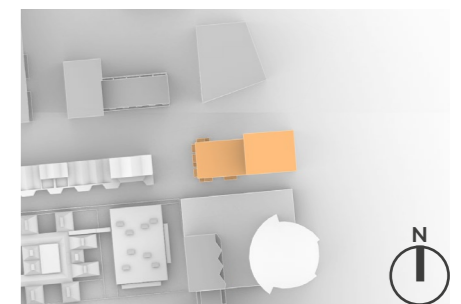
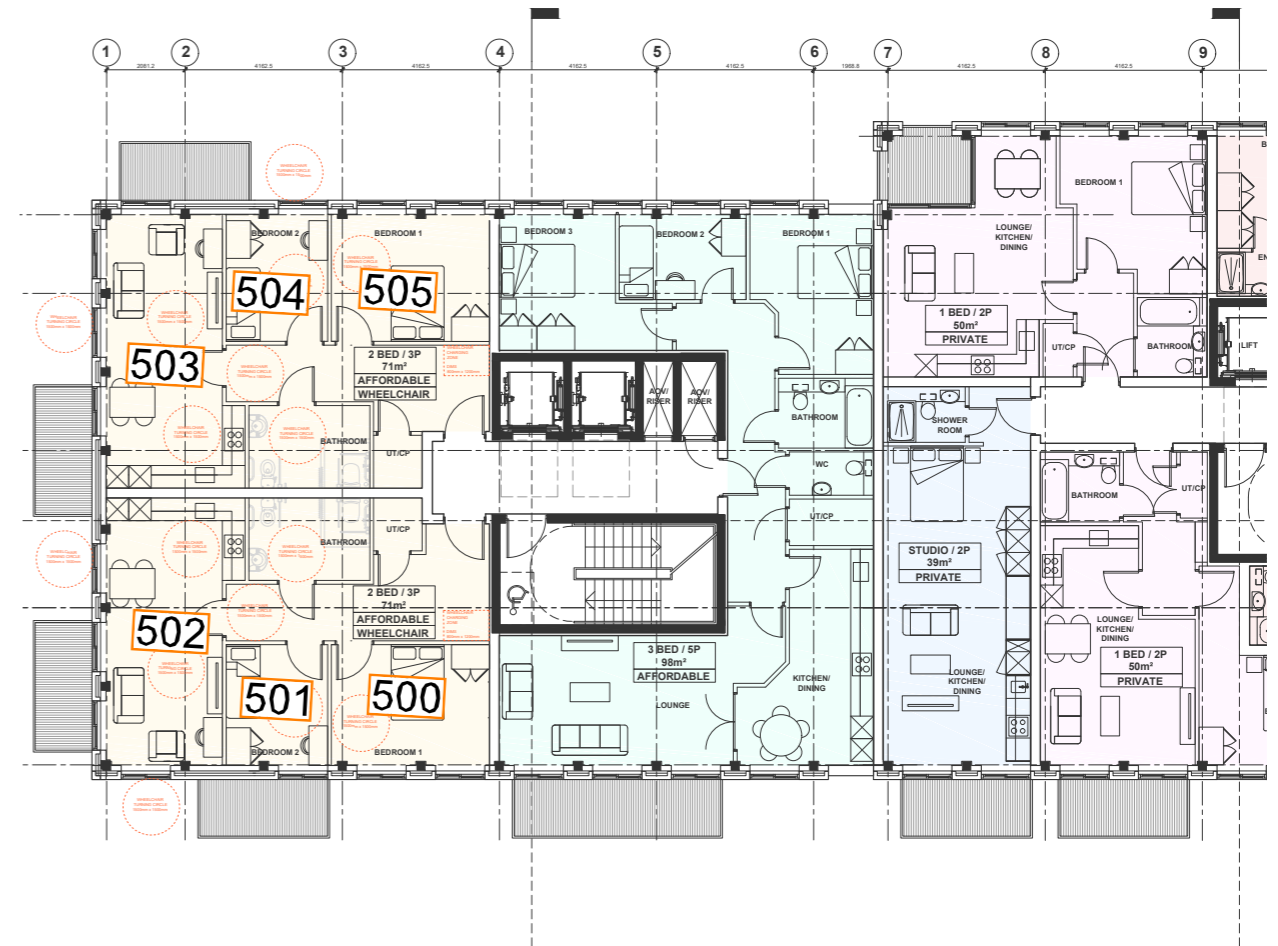


Fig. 01: Floor Plan

Table 01: Assessment Data

AVERAGE DAYLIGHT FACTOR						
FLOOR	ROOM	ROOM USE	CONSENTED	MAX PARAMETER	LOSS	%
LEVEL 2	506	BEDROOM	2.6	2.5	0.1	3.8
	507	BEDROOM	1.4	1.4	0.0	0.0
	508	L/K/D	4.7	4.0	0.7	14.9
	509	L/K/D	4.4	3.7	0.7	15.9
	510	BEDROOM	1.3	1.2	0.1	7.7
	511	BEDROOM	2.0	1.9	0.1	5.0

ANNUAL PROBABLE SUNLIGHT HOURS (ROOM)								
FLOOR	ROOM	ROOM USE	ROOM CONSENTED		ROOM MAX PARAMETER		TOTAL % LOSS	WINTER % LOSS
			TOTAL	WINTER	TOTAL	WINTER		
LEVEL 2	506	BEDROOM	48	13	47	12	2.1	7.7
	507	BEDROOM	34	14	33	13	2.9	7.1
	508	L/K/D	58	14	50	11	13.8	21.4
	509	L/K/D	46	14	38	8	17.4	42.9
	510	BEDROOM	N/A	N/A	N/A	N/A	N/A	N/A
	511	BEDROOM	N/A	N/A	N/A	N/A	N/A	N/A

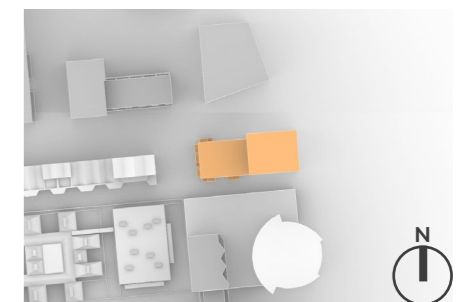
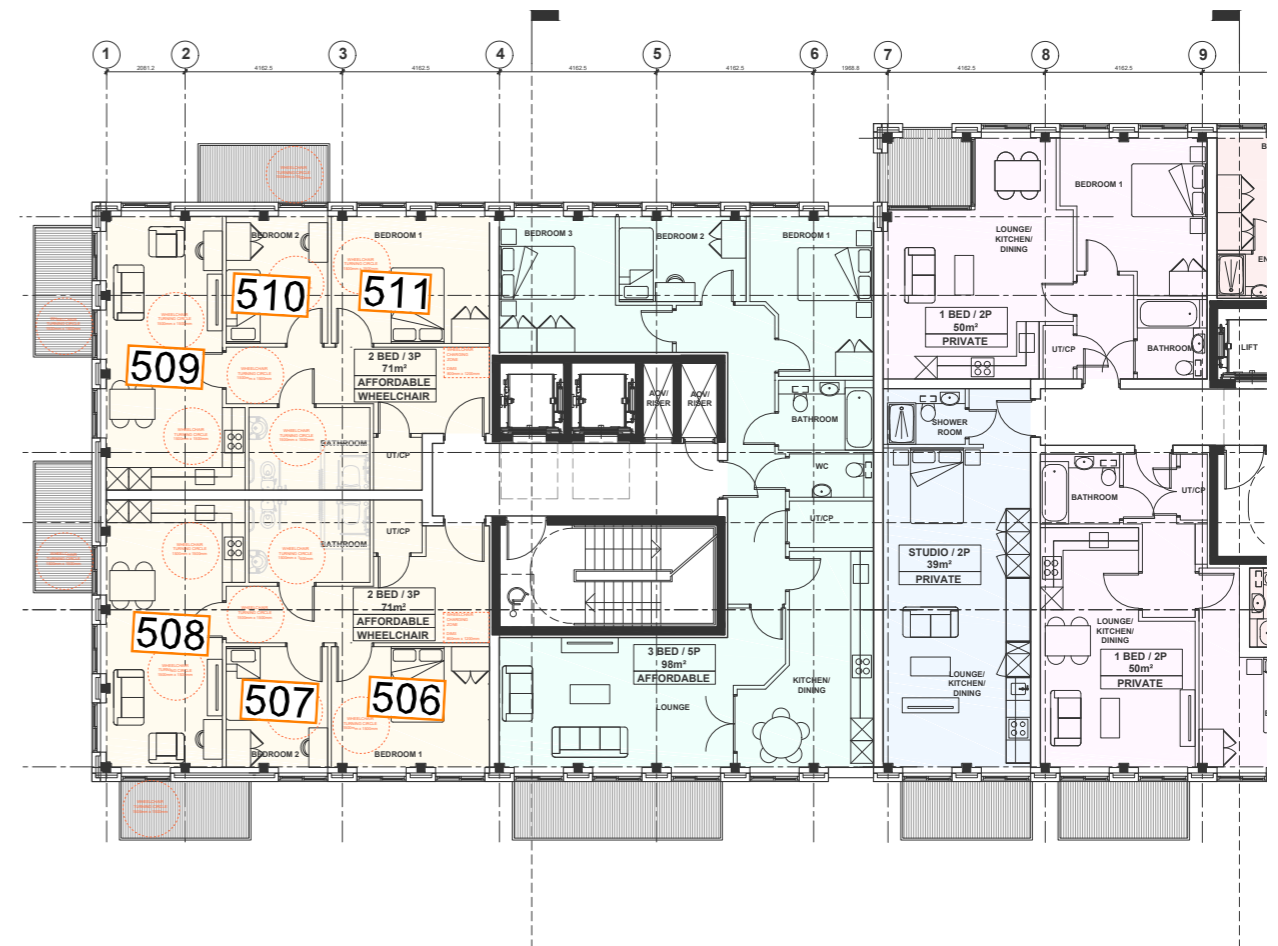


Fig. 02: Floor Plan

Table 02: Assessment Data



AVERAGE DAYLIGHT FACTOR						
FLOOR	ROOM	ROOM USE	CONSENTED	MAX PARAMETER	LOSS	%
LEVEL 3	512	BEDROOM	2.6	2.5	0.1	3.8
	513	BEDROOM	1.9	1.8	0.1	5.3
	514	L/K/D	4.1	3.6	0.5	12.2
	515	L/K/D	3.7	3.2	0.5	13.5
	516	BEDROOM	1.0	1.0	0.0	0.0
	517	BEDROOM	1.9	1.8	0.1	5.3

ANNUAL PROBABLE SUNLIGHT HOURS (ROOM)								
FLOOR	ROOM	ROOM USE	ROOM CONSENTED		ROOM MAX PARAMETER		TOTAL % LOSS	WINTER % LOSS
			TOTAL	WINTER	TOTAL	WINTER		
LEVEL 3	512	BEDROOM	55	15	54	14	1.8	6.7
	513	BEDROOM	47	16	46	15	2.1	6.3
	514	L/K/D	58	17	52	14	10.3	17.6
	515	L/K/D	46	14	40	8	13.0	42.9
	516	BEDROOM	N/A	N/A	N/A	N/A	N/A	N/A
	517	BEDROOM	N/A	N/A	N/A	N/A	N/A	N/A

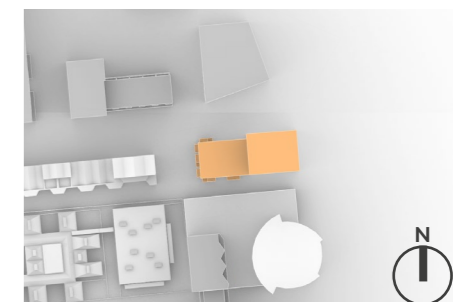
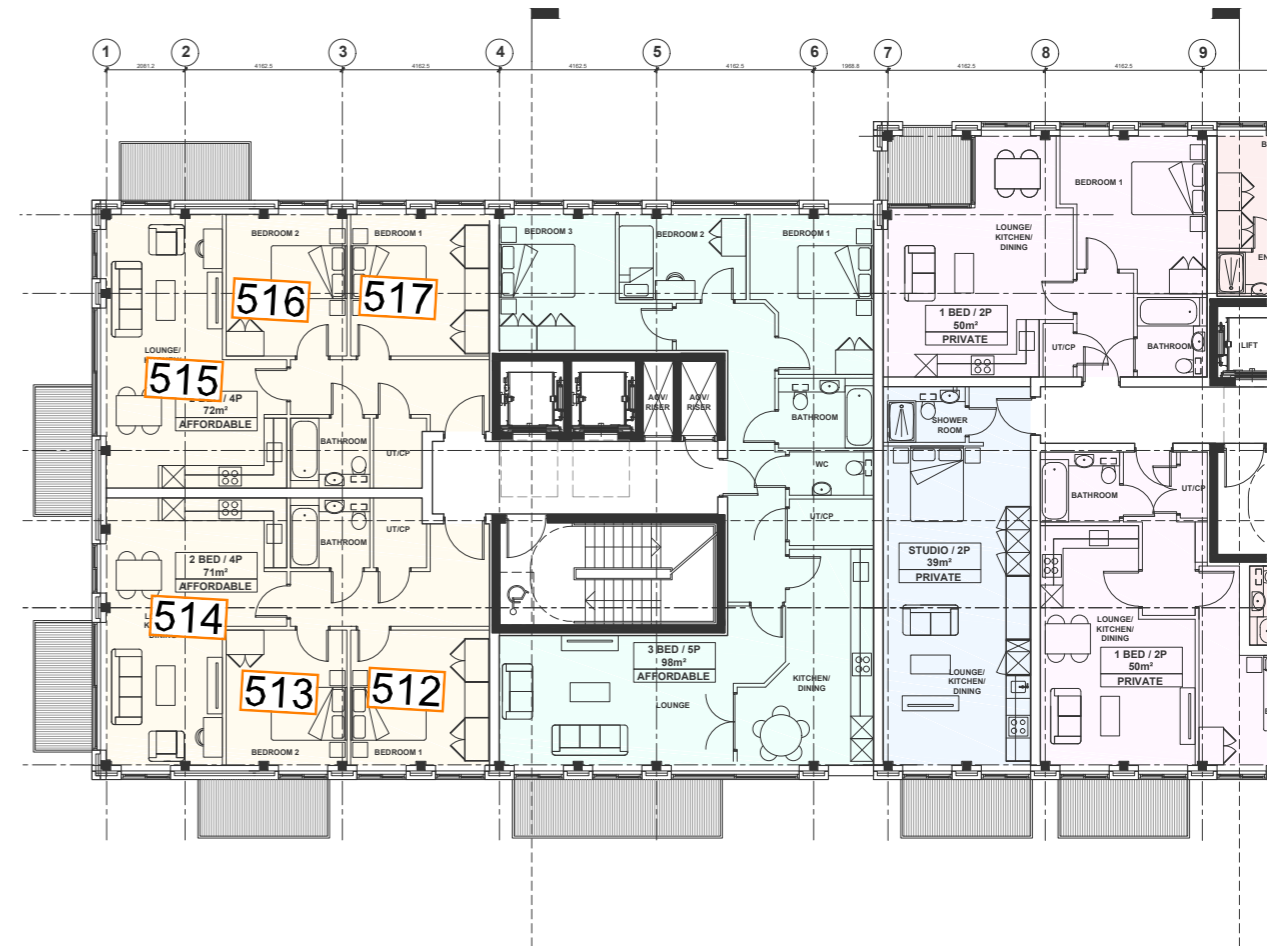


Fig. 03: Floor Plan

Table 03: Assessment Data







FLOOR	FLAT	ROOM	ROOM USE	WINDOW	VERTICAL SKY COMPONENT				NO SKY LINE			
					CONSENTED	MAX PARAMETER	LOSS	%	CONSENTED	MAX PARAMETER	LOSS	%
		245	L/K/D	245SE1	12.2	10.9	1.3	10.7	100.0	100.0	0.0	0.0
				245SE2	5.8	4.6	1.2	20.7				
				245W1	37.2	31.9	5.3	14.2				
				245W2	38.3	32.8	5.5	14.4				
		246	BEDROOM	246SW1	9.7	5.0	4.7	48.5	99.1	99.1	0.0	0.0
		247	BEDROOM	247SW1	9.9	5.3	4.6	46.5	99.2	99.2	0.0	0.0
		248	L/K/D	248NW1	5.9	5.2	0.7	11.9	100.0	100.0	0.0	0.0
				248NW2	12.1	11.4	0.7	5.8				
				248SW1	38.4	32.6	5.8	15.1				
				248SW2	38.0	32.3	5.7	15.0				
		249	L/K/D	249E1	15.5	15.5	0.0	0.0	100.0	100.0	0.0	0.0
				249E2	11.8	11.8	0.0	0.0				
				249S1	37.5	33.0	4.5	12.0				
				249S2	37.3	33.6	3.7	9.9				
				249SW1	36.6	31.4	5.2	14.2				
				249SW2	37.4	32.8	4.6	12.3				
		250	BEDROOM	250S1	8.9	8.6	0.3	3.4	95.2	95.2	0.0	0.0
		251	BEDROOM	251SE1	31.4	30.5	0.9	2.9	99.6	99.6	0.0	0.0
LEVEL 9		252	BEDROOM	252NW1	16.5	16.2	0.3	1.8	78.6	78.6	0.0	0.0
		253	BEDROOM	253NW1	5.2	5.0	0.2	3.8	65.3	65.3	0.0	0.0
		254	L/K/D	254NE1	6.5	6.5	0.0	0.0	99.7	99.7	0.0	0.0
				254NE2	6.4	6.4	0.0	0.0				
				254W1	31.6	29.3	2.3	7.3				
				254W2	35.7	32.2	3.5	9.8				
				254W3	35.1	30.8	4.3	12.3				
		255	L/K/D	255SE1	12.2	11.0	1.2	9.8	100.0	100.0	0.0	0.0
				255SE2	5.8	4.7	1.1	19.0				
				255W1	37.2	32.4	4.8	12.9				
				255W2	38.4	33.3	5.1	13.3				
		256	BEDROOM	256SW1	9.7	5.3	4.4	45.4	99.1	99.1	0.0	0.0
		257	BEDROOM	257SW1	9.9	5.7	4.2	42.4	99.2	99.2	0.0	0.0
		258	L/K/D	258NW1	5.9	5.4	0.5	8.5	100.0	100.0	0.0	0.0
				258NW2	12.2	11.6	0.6	4.9				
				258SW1	38.4	33.1	5.3	13.8				
				258SW2	38.0	32.8	5.2	13.7				
		259	L/K/D	259E1	16.2	16.2	0.0	0.0	100.0	100.0	0.0	0.0
				259E2	12.6	12.6	0.0	0.0				
				259S1	37.5	33.4	4.1	10.9				
				259S2	37.7	34.2	3.5	9.3				
				259SW1	36.6	31.8	4.8	13.1				
				259SW2	37.6	33.3	4.3	11.4				
		260	BEDROOM	260S1	9.6	9.4	0.2	2.1	95.2	95.2	0.0	0.0
		261	BEDROOM	261SE1	32.1	31.4	0.7	2.2	99.6	99.6	0.0	0.0
LEVEL 10		262	BEDROOM	262NW1	15.8	15.5	0.3	1.9	78.6	78.6	0.0	0.0
		263	BEDROOM	263NW1	4.1	3.9	0.2	4.9	65.3	65.3	0.0	0.0
		264	L/K/D	264NE1	5.5	5.5	0.0	0.0	99.7	99.7	0.0	0.0
				264NE2	5.3	5.3	0.0	0.0				
				264W1	31.7	29.7	2.0	6.3				
				264W2	35.7	32.6	3.1	8.7				
				264W3	35.1	31.2	3.9	11.1				
		265	L/K/D	265SE1	12.2	11.2	1.0	8.2	100.0	100.0	0.0	0.0
				265SE2	5.8	4.8	1.0	17.2				
				265W1	37.2	32.9	4.3	11.6				
				265W2	38.4	33.7	4.7	12.2				
		266	BEDROOM	266SW1	9.7	5.5	4.2	43.3	99.1	99.1	0.0	0.0
		267	BEDROOM	267SW1	9.9	5.9	4.0	40.4	99.2	99.2	0.0	0.0
		268	L/K/D	268NW1	5.9	5.5	0.4	6.8	100.0	100.0	0.0	0.0
				268NW2	12.2	11.7	0.5	4.1				
				268SW1	38.4	33.5	4.9	12.8				
				268SW2	38.0	33.2	4.8	12.6				
		269	L/K/D	269E1	16.4	16.4	0.0	0.0	100.0	100.0	0.0	0.0
				269E2	12.8	12.8	0.0	0.0				
				269S1	37.5	33.8	3.7	9.9				
				269S2	37.7	34.5	3.2	8.5				
				269SW1	36.6	32.2	4.4	12.0				
				269SW2	37.6	33.7	3.9	10.4				
		270	BEDROOM	270S1	9.6	9.5	0.1	1.0	95.2	95.2	0.0	0.0
		271	BEDROOM	271SE1	31.5	30.9	0.6	1.9	99.6	99.6	0.0	0.0

# DAYLIGHT/SUNLIGHT IMPACTS ON FORMER POPLAR BUS DEPOT - CONSENTED V MAX PARAMETER

Average Daylight Factor (ADF) - Annual Probable Sunlight Hours (APSH)

Main Block 1/3

FLOOR	ROOM	ROOM USE	AVERAGE DAYLIGHT FACTOR			
			CONSENTED	MAX PARAMETER	LOSS	%
FORMER BUS DEPOT - MAIN BLOCK - 1/3						
LEVEL 0	1	L/K/D	18	1.6	0.2	11.1
	2	L/K/D	1.9	1.8	0.1	5.3
	3	L/K/D	1.9	1.7	0.2	10.5
	4	L/K/D	1.9	1.6	0.3	15.8
	5	L/K/D	1.9	1.6	0.3	15.8
	6	L/K/D	1.8	1.6	0.2	11.1
	7	L/K/D	1.9	1.6	0.3	15.8
	8	L/K/D	1.8	1.4	0.4	22.2

FLOOR	ROOM	ROOM USE	ANNUAL PROBABLE SUNLIGHT HOURS (ROOM)					
			ROOM CONSENTED		ROOM MAX PARAMETER		TOTAL % LOSS	WINTER % LOSS
			TOTAL	WINTER	TOTAL	WINTER		
FORMER BUS DEPOT - MAIN BLOCK - 1/3								
LEVEL 0	1	L/K/D	11	0	7	0	36.4	0.0
	2	L/K/D	11	0	7	0	36.4	0.0
	3	L/K/D	12	0	7	0	41.7	0.0
	4	L/K/D	13	1	7	0	46.2	100.0
	5	L/K/D	13	1	6	0	53.8	100.0
	6	L/K/D	14	1	7	1	50.0	0.0
	7	L/K/D	12	0	6	0	50.0	0.0
	8	L/K/D	11	0	5	0	54.5	0.0



Fig. 01: Floor Plan

Table 01: Assessment Data

FLOOR	ROOM	ROOM USE	AVERAGE DAYLIGHT FACTOR			
			CONSENTED	MAX PARAMETER	LOSS	%
LEVEL 1	9	BEDROOM	1.8	1.6	0.2	11.1
	10	BEDROOM	1.4	1.4	0.0	0.0
	11	BEDROOM	2.0	1.7	0.3	15.0
	12	BEDROOM	0.8	0.7	0.1	12.5
	13	BEDROOM	2.4	1.9	0.5	20.8
	14	BEDROOM	2.2	2.1	0.1	4.5
	15	BEDROOM	2.2	1.8	0.4	18.2
	16	BEDROOM	2.2	2.0	0.2	9.1
	17	BEDROOM	2.0	1.5	0.5	25.0
	18	BEDROOM	1.7	1.5	0.2	11.8
	19	BEDROOM	2.1	1.6	0.5	23.8
	20	BEDROOM	2.3	2.1	0.2	8.7
	21	BEDROOM	2.3	1.7	0.6	26.1
	22	BEDROOM	2.1	1.8	0.3	14.3
	23	BEDROOM	2.1	1.5	0.6	28.6
	24	BEDROOM	1.9	1.6	0.3	15.8
	25	BEDROOM	1.0	0.7	0.3	30.0
	26	BEDROOM	2.2	1.9	0.3	13.6
	27	BEDROOM	1.2	0.8	0.4	33.3
	28	BEDROOM	1.6	1.4	0.2	12.5

FLOOR	ROOM	ROOM USE	ANNUAL PROBABLE SUNLIGHT HOURS (ROOM)					
			ROOM CONSENTED		ROOM MAX PARAMETER		TOTAL % LOSS	WINTER % LOSS
			TOTAL	WINTER	TOTAL	WINTER		
LEVEL 1	9	BEDROOM	25	3	18	0	28.0	100.0
	10	BEDROOM	5	0	4	0	20.0	0.0
	11	BEDROOM	21	3	12	0	42.9	100.0
	12	BEDROOM	5	0	4	0	20.0	0.0
	13	BEDROOM	26	3	17	0	34.6	100.0
	14	BEDROOM	7	0	6	0	14.3	0.0
	15	BEDROOM	26	3	16	0	38.5	100.0
	16	BEDROOM	7	0	6	0	14.3	0.0
	17	BEDROOM	21	3	11	1	47.6	66.7
	18	BEDROOM	7	0	6	0	14.3	0.0
	19	BEDROOM	26	3	15	1	42.3	66.7
	20	BEDROOM	7	0	5	0	28.6	0.0
	21	BEDROOM	25	2	13	1	48.0	50.0
	22	BEDROOM	7	0	5	0	28.6	0.0
	23	BEDROOM	19	1	9	1	52.6	0.0
	24	BEDROOM	8	0	4	0	50.0	0.0
	25	BEDROOM	25	2	13	1	48.0	50.0
	26	BEDROOM	7	0	3	0	57.1	0.0
	27	BEDROOM	23	2	12	1	47.8	50.0
	28	BEDROOM	6	0	3	0	50.0	0.0



Fig. 02: Floor Plan

Table 02: Assessment Data

FLOOR	ROOM	ROOM USE	AVERAGE DAYLIGHT FACTOR			
			CONSENTED	MAX PARAMETER	LOSS	%
LEVEL 2	29	L/K/D	2.4	1.8	0.6	25.0
	30	BEDROOM	2.9	2.3	0.6	20.7
	31	BEDROOM	2.5	2.1	0.4	16.0
	32	L/K/D	3.1	2.5	0.6	19.4
	33	BEDROOM	3.0	2.3	0.7	23.3
	34	BEDROOM	2.9	2.2	0.7	24.1
	35	LIVING ROOM	1.9	1.3	0.6	31.6
	36	BEDROOM	3.2	2.4	0.8	25.0
	37	BEDROOM	2.7	2.0	0.7	25.9
	38	BEDROOM	2.7	2.0	0.7	25.9
	39	BEDROOM	3.1	2.3	0.8	25.8
	40	LIVING ROOM	1.8	1.2	0.6	33.3
	41	BEDROOM	2.9	2.0	0.9	31.0
	42	BEDROOM	2.9	2.0	0.9	31.0
	43	BEDROOM	2.8	2.0	0.8	28.6
	44	BEDROOM	2.6	1.8	0.8	30.8
	45	L/K/D	4.2	3.1	1.1	26.2
	46	BEDROOM	2.2	1.8	0.4	18.2
	47	BEDROOM	1.6	1.2	0.4	25.0
	48	LIVING ROOM	3.8	2.9	0.9	23.7

FLOOR	ROOM	ROOM USE	ANNUAL PROBABLE SUNLIGHT HOURS (ROOM)					
			ROOM CONSENTED		ROOM MAX PARAMETER		TOTAL % LOSS	WINTER % LOSS
			TOTAL	WINTER	TOTAL	WINTER		
LEVEL 2	29	L/K/D	46	12	30	3	34.8	75.0
	30	BEDROOM	35	8	20	1	42.9	87.5
	31	BEDROOM	16	1	9	0	43.8	100.0
	32	L/K/D	43	12	25	4	41.9	66.7
	33	BEDROOM	43	12	26	4	39.5	66.7
	34	BEDROOM	39	10	18	1	53.8	90.0
	35	LIVING ROOM	19	6	6	1	68.4	83.3
	36	BEDROOM	42	11	22	3	47.6	72.7
	37	BEDROOM	42	11	23	4	45.2	63.6
	38	BEDROOM	42	11	21	4	50.0	63.6
	39	BEDROOM	38	9	18	2	52.6	77.8
	40	LIVING ROOM	17	5	7	2	58.8	60.0
	41	BEDROOM	42	11	21	4	50.0	63.6
	42	BEDROOM	41	10	20	4	51.2	60.0
	43	BEDROOM	42	11	19	3	54.8	72.7
	44	BEDROOM	41	10	19	2	53.7	80.0
	45	L/K/D	84	28	64	21	23.8	25.0
	46	BEDROOM	58	24	46	17	20.7	29.2
	47	BEDROOM	44	18	33	12	25.0	33.3
	48	LIVING ROOM	69	29	50	21	27.5	27.6



Fig. 03: Floor Plan

Table 03: Assessment Data



FLOOR	ROOM	ROOM USE	AVERAGE DAYLIGHT FACTOR			
			CONSENTED	MAX PARAMETER	LOSS	%
LEVEL 3	49	BEDROOM	2.4	2.3	0.1	4.2
	50	L/K/D	4.0	3.5	0.5	12.5
	51	BEDROOM	3.8	3.4	0.4	10.5
	52	BEDROOM	4.8	4.0	0.8	16.7
	53	LIVING ROOM	3.8	3.4	0.4	10.5
	54	KITCHEN	3.4	2.6	0.8	23.5
	55	BEDROOM	2.7	2.0	0.7	25.9
	56	BEDROOM	3.1	2.4	0.7	22.6
	57	BEDROOM	3.0	2.3	0.7	23.3
	58	LIVING ROOM	3.8	2.9	0.9	23.7
	59	BEDROOM	3.3	2.4	0.9	27.3
	60	BEDROOM	2.8	2.0	0.8	28.6
	61	BEDROOM	2.9	2.0	0.9	31.0
	62	BEDROOM	3.3	2.3	1.0	30.3
	63	LIVING ROOM	2.0	1.2	0.8	40.0
	64	BEDROOM	3.1	2.1	1.0	32.3
	65	BEDROOM	3.0	2.1	0.9	30.0
	66	BEDROOM	2.9	2.0	0.9	31.0
	67	BEDROOM	2.8	1.8	1.0	35.7
	68	L/K/D	4.2	3.0	1.2	28.6
	69	BEDROOM	2.2	1.8	0.4	18.2
	70	BEDROOM	1.6	1.2	0.4	25.0
	71	LIVING ROOM	3.7	2.8	0.9	24.3

FLOOR	ROOM	ROOM USE	ANNUAL PROBABLE SUNLIGHT HOURS (ROOM)					
			ROOM CONSENTED		ROOM MAX PARAMETER		TOTAL % LOSS	WINTER % LOSS
			TOTAL	WINTER	TOTAL	WINTER		
LEVEL 3	49	BEDROOM	N/A	N/A	N/A	N/A	N/A	N/A
	50	L/K/D	43	11	29	3	32.6	72.7
	51	BEDROOM	18	2	11	0	38.9	100.0
	52	BEDROOM	43	11	28	3	34.9	72.7
	53	LIVING ROOM	24	2	16	0	33.3	100.0
	54	KITCHEN	46	14	27	4	41.3	71.4
	55	BEDROOM	46	14	27	4	41.3	71.4
	56	BEDROOM	46	14	28	4	39.1	71.4
	57	BEDROOM	46	14	26	4	43.5	71.4
	58	LIVING ROOM	39	10	21	1	46.2	90.0
	59	BEDROOM	46	14	26	3	43.5	78.6
	60	BEDROOM	46	14	25	4	45.7	71.4
	61	BEDROOM	46	14	22	4	52.2	71.4
	62	BEDROOM	42	12	19	2	54.8	83.3
	63	LIVING ROOM	20	7	7	2	65.0	71.4
	64	BEDROOM	45	13	21	4	53.3	69.2
	65	BEDROOM	45	13	21	4	53.3	69.2
	66	BEDROOM	44	12	20	3	54.5	75.0
	67	BEDROOM	43	11	20	2	53.5	81.8
	68	L/K/D	86	29	66	21	23.3	27.6
	69	BEDROOM	59	25	48	18	18.6	28.0
	70	BEDROOM	45	19	35	13	22.2	31.6
	71	LIVING ROOM	70	30	53	23	24.3	23.3



Fig. 04: Floor Plan

Table 04: Assessment Data

FLOOR	ROOM	ROOM USE	AVERAGE DAYLIGHT FACTOR			
			CONSENTED	MAX PARAMETER	LOSS	%
LEVEL 4	72	L/K/D	3.7	3.6	0.1	2.7
	73	BEDROOM	1.6	1.5	0.1	6.3
	74	BEDROOM	1.6	1.5	0.1	6.3
	75	KITCHEN	6.1	5.6	0.5	8.2
	76	BEDROOM	3.4	2.5	0.9	26.5
	77	BEDROOM	2.9	2.1	0.8	27.6
	78	BEDROOM	2.9	2.1	0.8	27.6
	79	BEDROOM	3.4	2.5	0.9	26.5
	80	LIVING ROOM	4.0	3.0	1.0	25.0
	81	BEDROOM	3.2	2.2	1.0	31.3
	82	BEDROOM	3.1	2.2	0.9	29.0
	83	BEDROOM	3.1	2.1	1.0	32.3
	84	BEDROOM	2.9	2.0	0.9	31.0
	85	L/K/D	4.4	3.1	1.3	29.5
	86	BEDROOM	2.2	1.8	0.4	18.2
	87	BEDROOM	1.6	1.3	0.3	18.8
	88	LIVING ROOM	3.8	2.9	0.9	23.7

FLOOR	ROOM	ROOM USE	ANNUAL PROBABLE SUNLIGHT HOURS (ROOM)					
			ROOM CONSENTED		ROOM MAX PARAMETER		TOTAL % LOSS	WINTER % LOSS
			TOTAL	WINTER	TOTAL	WINTER		
LEVEL 4	72	L/K/D	N/A	N/A	N/A	N/A	N/A	N/A
	73	BEDROOM	N/A	N/A	N/A	N/A	N/A	N/A
	74	BEDROOM	N/A	N/A	N/A	N/A	N/A	N/A
	75	KITCHEN	33	4	26	1	21.2	75.0
	76	BEDROOM	46	14	27	4	41.3	71.4
	77	BEDROOM	46	14	26	5	43.5	64.3
	78	BEDROOM	46	14	25	5	45.7	64.3
	79	BEDROOM	46	14	26	5	43.5	64.3
	80	LIVING ROOM	39	10	20	3	48.7	70.0
	81	BEDROOM	46	14	25	5	45.7	64.3
	82	BEDROOM	46	14	25	5	45.7	64.3
	83	BEDROOM	46	14	25	4	45.7	71.4
	84	BEDROOM	45	13	23	3	48.9	76.9
	85	L/K/D	87	30	70	23	19.5	23.3
	86	BEDROOM	59	25	48	18	18.6	28.0
	87	BEDROOM	45	19	35	13	22.2	31.6
	88	LIVING ROOM	71	30	56	23	21.1	23.3



Fig. 05: Floor Plan

Table 05: Assessment Data

FLOOR	ROOM	ROOM USE	AVERAGE DAYLIGHT FACTOR			
			CONSENTED	MAX PARAMETER	LOSS	%
LEVEL 5	89	LIVING ROOM	2.7	2.2	0.5	18.5
	90	BEDROOM	4.8	3.9	0.9	18.8
	91	BEDROOM	4.3	3.5	0.8	18.6
	92	L/K/D	3.4	3.2	0.2	5.9
	93	LIVING ROOM	6.3	5.0	1.3	20.6
	94	BEDROOM	3.4	2.4	1.0	29.4
	95	BEDROOM	3.5	2.5	1.0	28.6
	96	BEDROOM	8.1	5.9	2.2	27.2
	97	BEDROOM	3.6	3.0	0.6	16.7
	98	BEDROOM	2.2	1.8	0.4	18.2
	99	BEDROOM	1.7	1.3	0.4	23.5
100	LIVING ROOM	3.9	3.1	0.8	20.5	

FLOOR	ROOM	ROOM USE	ANNUAL PROBABLE SUNLIGHT HOURS (ROOM)					
			ROOM CONSENTED		ROOM MAX PARAMETER		TOTAL % LOSS	WINTER % LOSS
			TOTAL	WINTER	TOTAL	WINTER		
LEVEL 5	89	LIVING ROOM	41	11	26	2	36.6	81.8
	90	BEDROOM	39	9	24	2	38.5	77.8
	91	BEDROOM	37	7	25	3	32.4	57.1
	92	L/K/D						
	93	LIVING ROOM	46	14	28	6	39.1	57.1
	94	BEDROOM	46	14	27	5	41.3	64.3
	95	BEDROOM	46	14	27	5	41.3	64.3
	96	BEDROOM	89	30	70	22	21.3	26.7
	97	BEDROOM	68	27	57	20	16.2	25.9
	98	BEDROOM	60	25	49	18	18.3	28.0
	99	BEDROOM	45	19	35	13	22.2	31.6
100	LIVING ROOM	73	30	58	23	20.5	23.3	



Fig. 06: Floor Plan

Table 06: Assessment Data

FLOOR	ROOM	ROOM USE	AVERAGE DAYLIGHT FACTOR			
			CONSENTED	MAX PARAMETER	LOSS	%
LEVEL 6	101	L/K/D	4.9	4.1	0.8	16.3
	102	BEDROOM	3.4	2.5	0.9	26.5
	103	BEDROOM	8.6	6.4	2.2	25.6
	104	BEDROOM	3.8	3.3	0.5	13.2
	105	BEDROOM	2.3	1.9	0.4	17.4
	106	BEDROOM	1.8	1.4	0.4	22.2
	107	LIVING ROOM	5.0	4.2	0.8	16.0

FLOOR	ROOM	ROOM USE	ANNUAL PROBABLE SUNLIGHT HOURS (ROOM)					
			ROOM CONSENTED		ROOM MAX PARAMETER		TOTAL % LOSS	WINTER % LOSS
			TOTAL	WINTER	TOTAL	WINTER		
LEVEL 6	101	L/K/D	46	14	28	5	39.1	64.3
	102	BEDROOM	46	14	28	4	39.1	71.4
	103	BEDROOM	93	30	75	22	19.4	26.7
	104	BEDROOM	72	27	61	20	15.3	25.9
	105	BEDROOM	65	24	56	18	13.8	25.0
	106	BEDROOM	46	19	37	13	19.6	31.6
	107	LIVING ROOM	89	30	75	23	15.7	23.3



Fig. 07: Floor Plan

Table 07: Assessment Data

FLOOR	ROOM	ROOM USE	AVERAGE DAYLIGHT FACTOR			
			CONSENTED	MAX PARAMETER	LOSS	%
LEVEL 7	108	LIVING ROOM	6.3	5.6	0.7	11.1
	109	BEDROOM	7.9	6.6	1.3	16.5
	110	KITCHEN	4.1	3.5	0.6	14.6

FLOOR	ROOM	ROOM USE	ANNUAL PROBABLE SUNLIGHT HOURS (ROOM)					
			ROOM CONSENTED		ROOM MAX PARAMETER		TOTAL % LOSS	WINTER % LOSS
			TOTAL	WINTER	TOTAL	WINTER		
LEVEL 7	108	LIVING ROOM	48	15	33	6	31.3	60.0
	109	BEDROOM	92	30	77	22	16.3	26.7
	110	KITCHEN	75	28	63	20	16.0	28.6

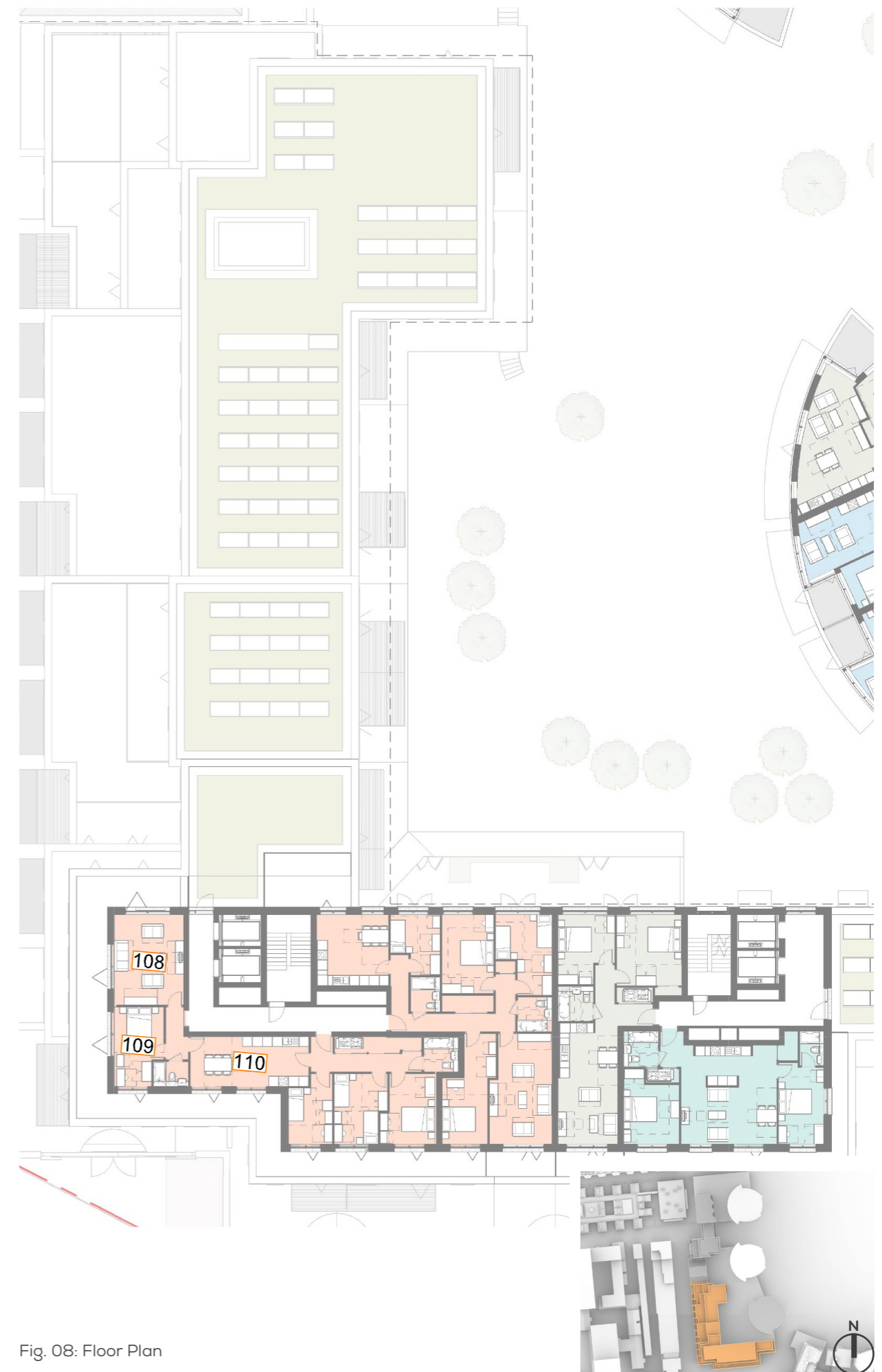


Fig. 08: Floor Plan

Table 08: Assessment Data

# DAYLIGHT/SUNLIGHT IMPACTS ON FORMER POPLAR BUS DEPOT - EXISTING V PROPOSED

Average Daylight Factor (ADF) - Annual Probable Sunlight Hours (APSH)

Main Block 2/3

FLOOR	ROOM	ROOM USE	AVERAGE DAYLIGHT FACTOR			
			CONSENTED	MAX PARAMETER	LOSS	%
FORMER BUS DEPOT - MAIN BLOCK - 2/3						
LEVEL 1	111	BEDROOM	0.4	0.4	0.0	0.0
	112	LIVING ROOM	1.2	1.1	0.1	8.3
	113	L/K/D	2.9	2.9	0.0	0.0

FLOOR	ROOM	ROOM USE	ANNUAL PROBABLE SUNLIGHT HOURS (ROOM)					
			ROOM CONSENTED		ROOM MAX PARAMETER		TOTAL % LOSS	WINTER % LOSS
			TOTAL	WINTER	TOTAL	WINTER		
FORMER BUS DEPOT - MAIN BLOCK - 2/3								
LEVEL 1	111	BEDROOM	3	0	3	0	0.0	0.0
	112	LIVING ROOM	10	2	10	2	0.0	0.0
	113	L/K/D	25	5	22	2	12.0	60.0

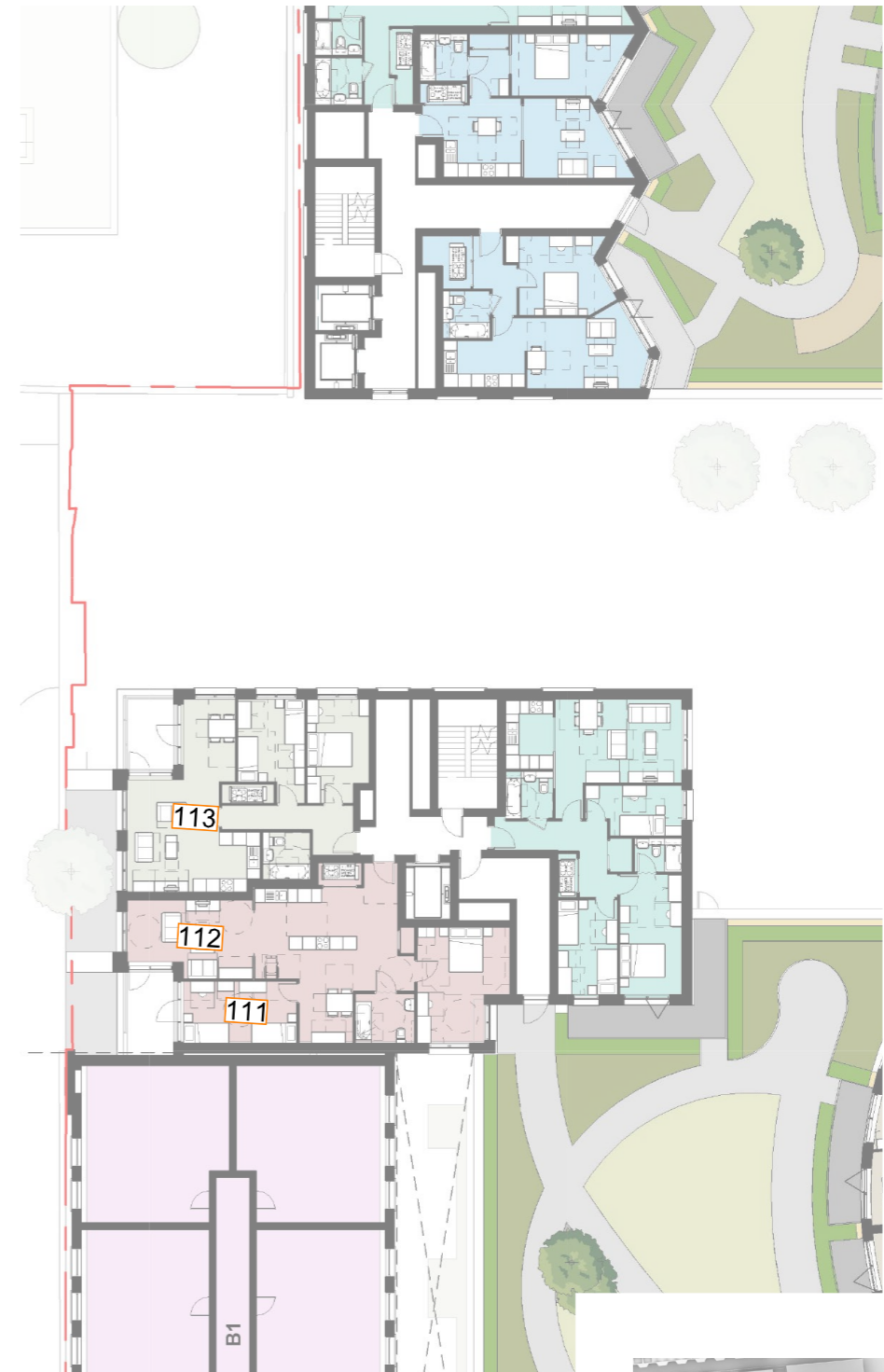


Fig. 09: Floor Plan

Table 09: Assessment Data

FLOOR	ROOM	ROOM USE	AVERAGE DAYLIGHT FACTOR			
			CONSENTED	MAX PARAMETER	LOSS	%
LEVEL 2	114	BEDROOM	1.2	1.0	0.2	16.7
	115	L/K/D	1.0	0.9	0.1	10.0
	116	L/K/D	3.5	3.4	0.1	2.9

FLOOR	ROOM	ROOM USE	ANNUAL PROBABLE SUNLIGHT HOURS (ROOM)					
			ROOM CONSENTED		ROOM MAX PARAMETER		TOTAL % LOSS	WINTER % LOSS
			TOTAL	WINTER	TOTAL	WINTER		
LEVEL 2	114	BEDROOM	10	6	8	5	20.0	16.7
	115	L/K/D	29	9	23	4	20.7	55.6
	116	L/K/D	36	11	32	7	11.1	36.4

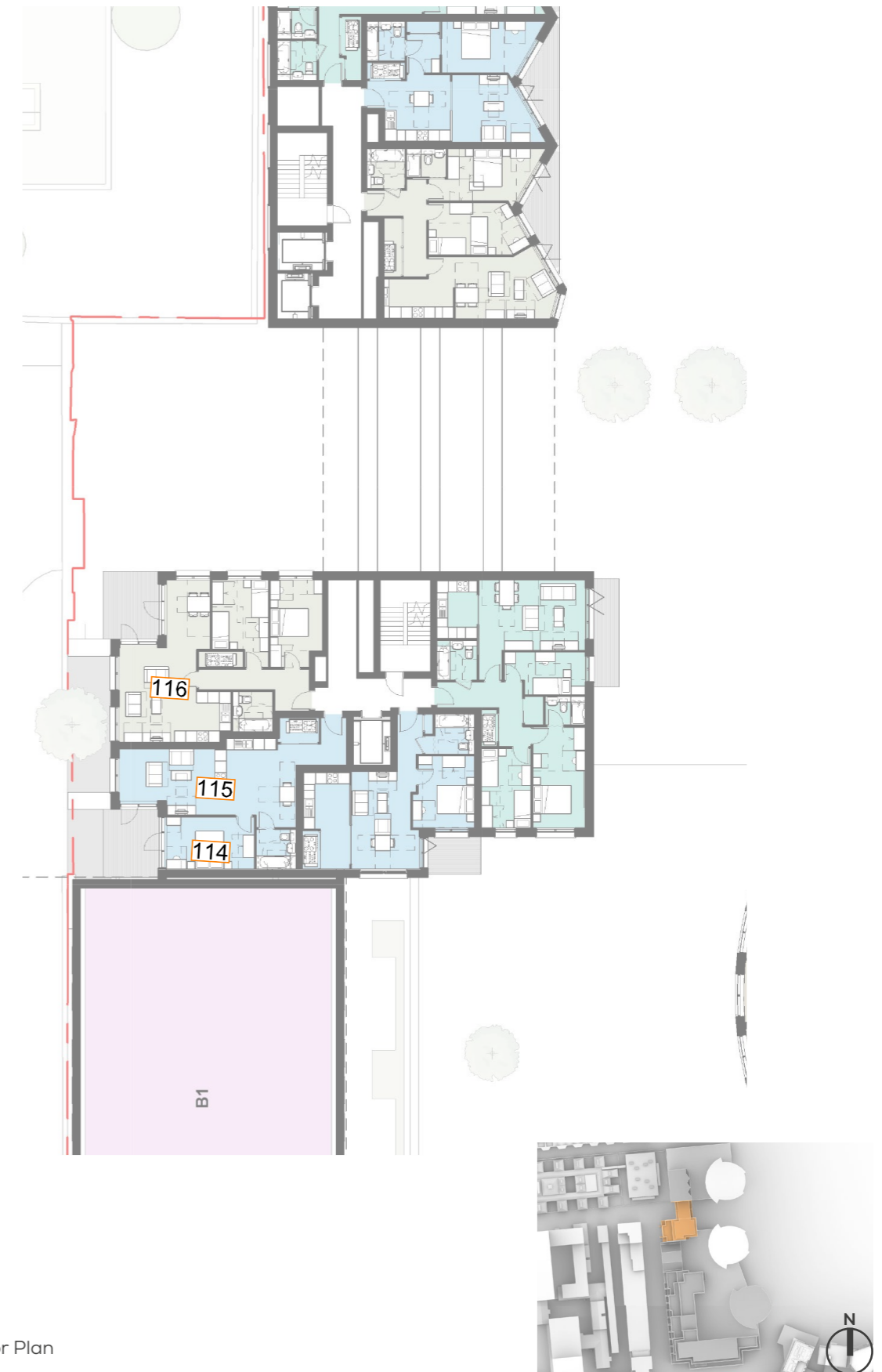


Fig. 10: Floor Plan

Table 10: Assessment Data

FLOOR	ROOM	ROOM USE	AVERAGE DAYLIGHT FACTOR			
			CONSENTED	MAX PARAMETER	LOSS	%
LEVEL 3	117	BEDROOM	1.7	1.3	0.4	23.5
	118	L/K/D	1.4	1.1	0.3	21.4
	119	L/K/D	3.9	3.7	0.2	5.1
	120	BEDROOM	1.6	1.6	0.0	0.0
	121	L/K/D	2.3	2.2	0.1	4.3
	122	L/K/D	2.2	2.2	0.0	0.0
	123	BEDROOM	1.2	1.3	-0.1	-8.3

FLOOR	ROOM	ROOM USE	ANNUAL PROBABLE SUNLIGHT HOURS (ROOM)					
			ROOM CONSENTED		ROOM MAX PARAMETER		TOTAL % LOSS	WINTER % LOSS
			TOTAL	WINTER	TOTAL	WINTER		
LEVEL 3	117	BEDROOM	17	13	9	6	47.1	53.8
	118	L/K/D	37	16	28	8	24.3	50.0
	119	L/K/D	39	12	34	7	12.8	41.7
	120	BEDROOM	10	0	10	0	0.0	0.0
	121	L/K/D	24	0	24	0	0.0	0.0
	122	L/K/D	24	1	24	1	0.0	0.0
	123	BEDROOM	10	2	10	2	0.0	0.0

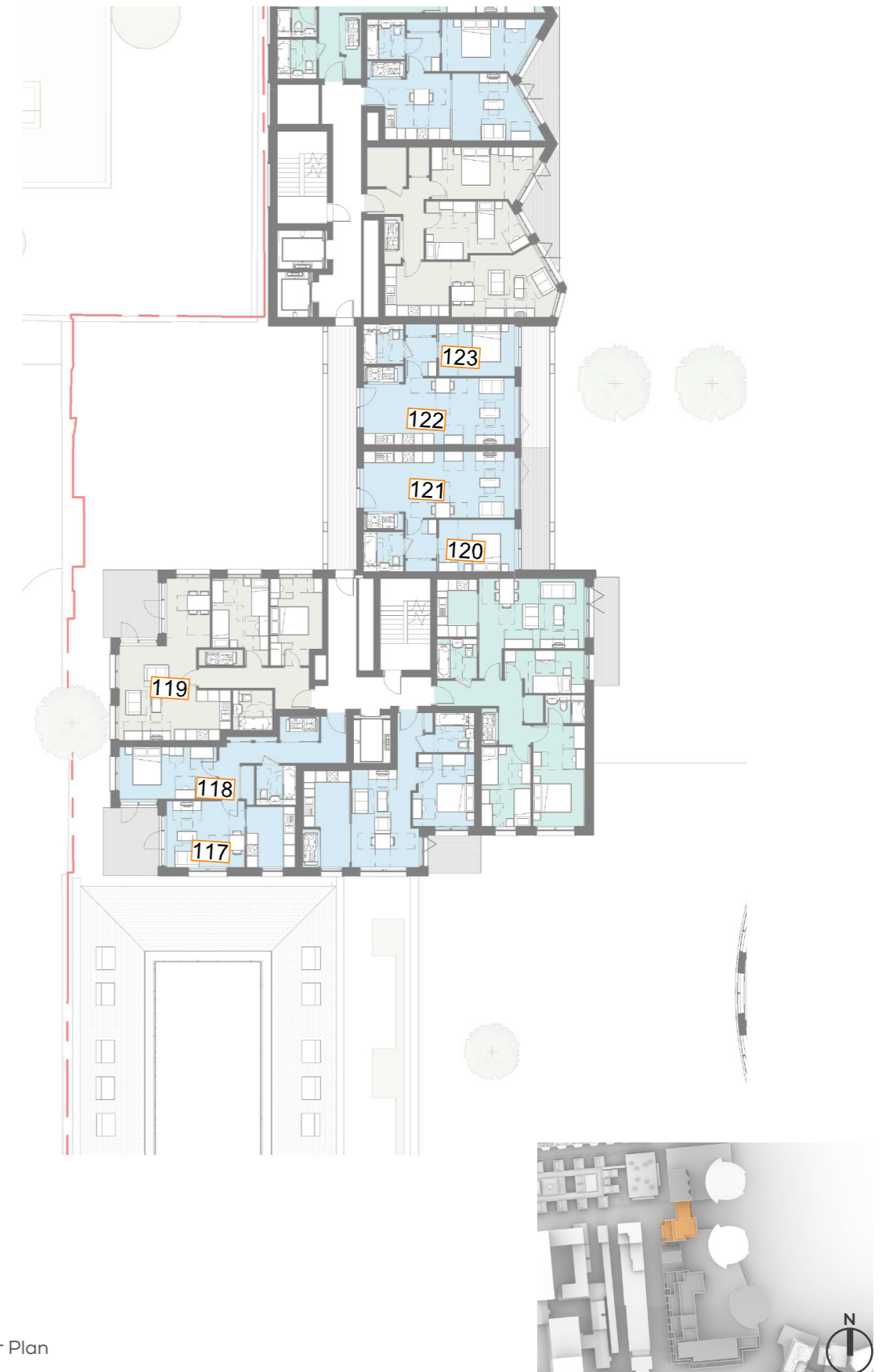


Fig. 11: Floor Plan

Table 11: Assessment Data



FLOOR	ROOM	ROOM USE	AVERAGE DAYLIGHT FACTOR			
			CONSENTED	MAX PARAMETER	LOSS	%
LEVEL 4	124	BEDROOM	4.2	3.7	0.5	11.9
	125	L/K/D	2.2	1.9	0.3	13.6
	126	L/K/D	5.7	5.5	0.2	3.5
	127	BEDROOM	1.7	1.7	0.0	0.0
	128	L/K/D	2.4	2.3	0.1	4.2
	129	L/K/D	2.4	2.3	0.1	4.2
	130	BEDROOM	1.3	1.3	0.0	0.0

FLOOR	ROOM	ROOM USE	ANNUAL PROBABLE SUNLIGHT HOURS (ROOM)					
			ROOM CONSENTED		ROOM MAX PARAMETER		TOTAL % LOSS	WINTER % LOSS
			TOTAL	WINTER	TOTAL	WINTER		
LEVEL 4	124	BEDROOM	44	15	36	7	18.2	53.3
	125	L/K/D	57	21	49	13	14.0	38.1
	126	L/K/D	44	12	39	7	11.4	41.7
	127	BEDROOM	10	0	10	0	0.0	0.0
	128	L/K/D	26	1	25	0	3.8	100.0
	129	L/K/D	27	4	26	3	3.7	25.0
	130	BEDROOM	10	2	10	2	0.0	0.0

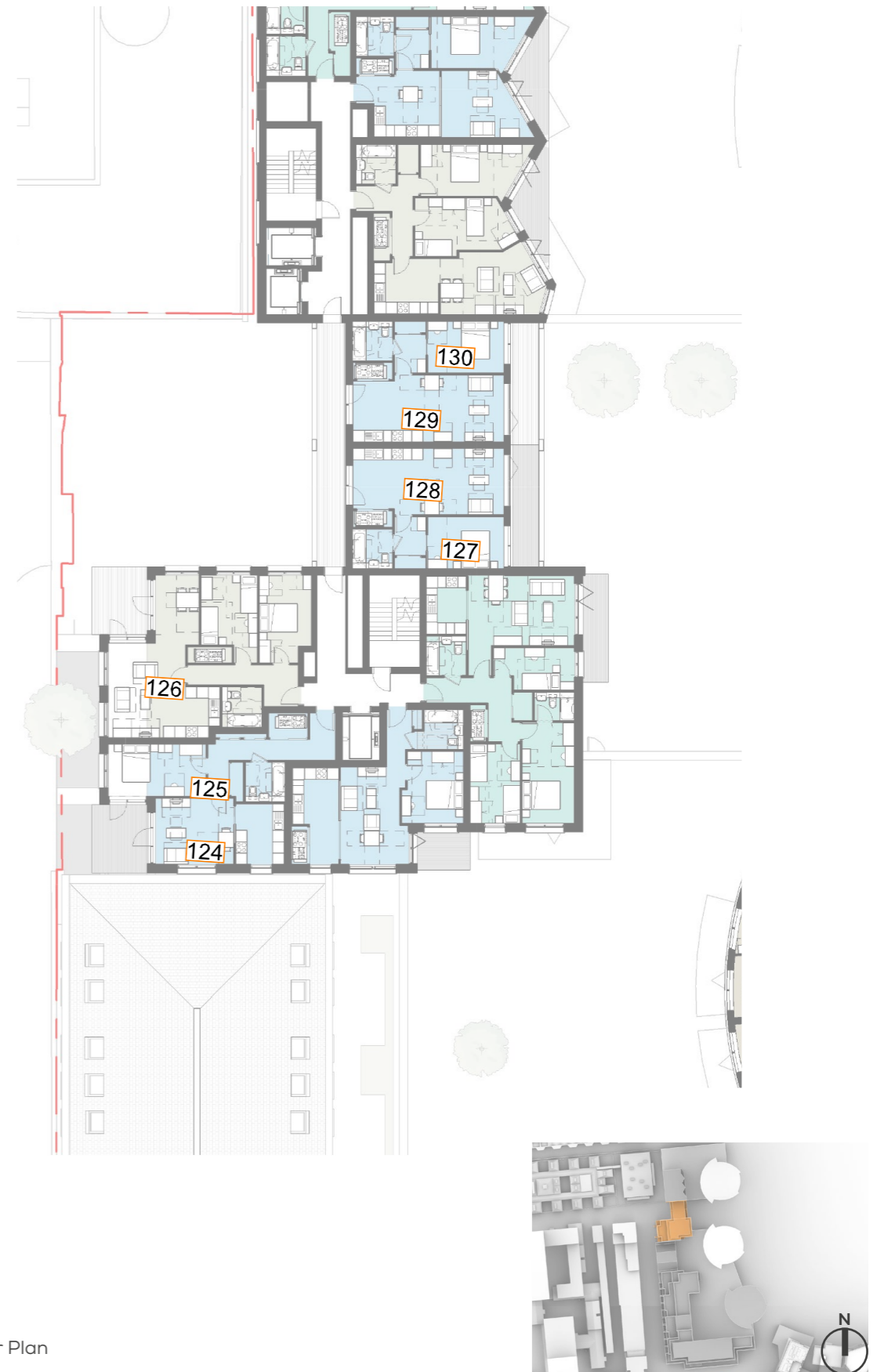


Fig. 12: Floor Plan

Table 12: Assessment Data

FLOOR	ROOM	ROOM USE	AVERAGE DAYLIGHT FACTOR			
			CONSENTED	MAX PARAMETER	LOSS	%
LEVEL 5	131	KITCHEN	2.0	1.9	0.1	5.0
	132	LIVING ROOM	3.8	3.5	0.3	7.9
	133	BEDROOM	6.9	6.3	0.6	8.7
	134	BEDROOM	5.6	5.2	0.4	7.1
	135	BEDROOM	5.9	5.6	0.3	5.1
	136	BEDROOM	3.1	3.1	0.0	0.0
	137	L/K/D	3.3	3.2	0.1	3.0
	138	L/K/D	3.2	3.0	0.2	6.3
	139	BEDROOM	2.4	2.4	0.0	0.0

FLOOR	ROOM	ROOM USE	ANNUAL PROBABLE SUNLIGHT HOURS (ROOM)					
			ROOM CONSENTED		ROOM MAX PARAMETER		TOTAL % LOSS	WINTER % LOSS
			TOTAL	WINTER	TOTAL	WINTER		
LEVEL 5	131	KITCHEN	38	15	36	13	5.3	13.3
	132	LIVING ROOM	63	24	55	16	12.7	33.3
	133	BEDROOM	77	25	68	17	11.7	32.0
	134	BEDROOM	42	12	35	5	16.7	58.3
	135	BEDROOM	41	11	35	5	14.6	54.5
	136	BEDROOM	10	0	10	0	0.0	0.0
	137	L/K/D	36	6	34	4	5.6	33.3
	138	L/K/D	36	8	32	4	11.1	50.0
	139	BEDROOM	17	3	17	3	0.0	0.0



Fig. 13: Floor Plan

Table 13: Assessment Data

# DAYLIGHT/SUNLIGHT IMPACTS ON FORMER POPLAR BUS DEPOT - EXISTING V PROPOSED

Average Daylight Factor (ADF) - Annual Probable Sunlight Hours (APSH)

Main Block 3/3

FLOOR	ROOM	ROOM USE	AVERAGE DAYLIGHT FACTOR			
			CONSENTED	MAX PARAMETER	LOSS	%
FORMER BUS DEPOT - MAIN BLOCK - 3/3						
LEVEL 1	140	L/K/D	1.5	1.4	0.1	6.7
	141	BEDROOM	1.2	1.2	0.0	0.0
	142	BEDROOM	1.5	1.4	0.1	6.7
	143	BEDROOM	1.3	1.2	0.1	7.7

FLOOR	ROOM	ROOM USE	ANNUAL PROBABLE SUNLIGHT HOURS (ROOM)					
			ROOM CONSENTED		ROOM MAX PARAMETER		TOTAL % LOSS	WINTER % LOSS
			TOTAL	WINTER	TOTAL	WINTER		
FORMER BUS DEPOT - MAIN BLOCK - 3/3								
LEVEL 1	140	L/K/D	6	0	6	0	0.0	0.0
	141	BEDROOM	3	0	3	0	0.0	0.0
	142	BEDROOM	3	0	3	0	0.0	0.0
	143	BEDROOM	3	0	3	0	0.0	0.0

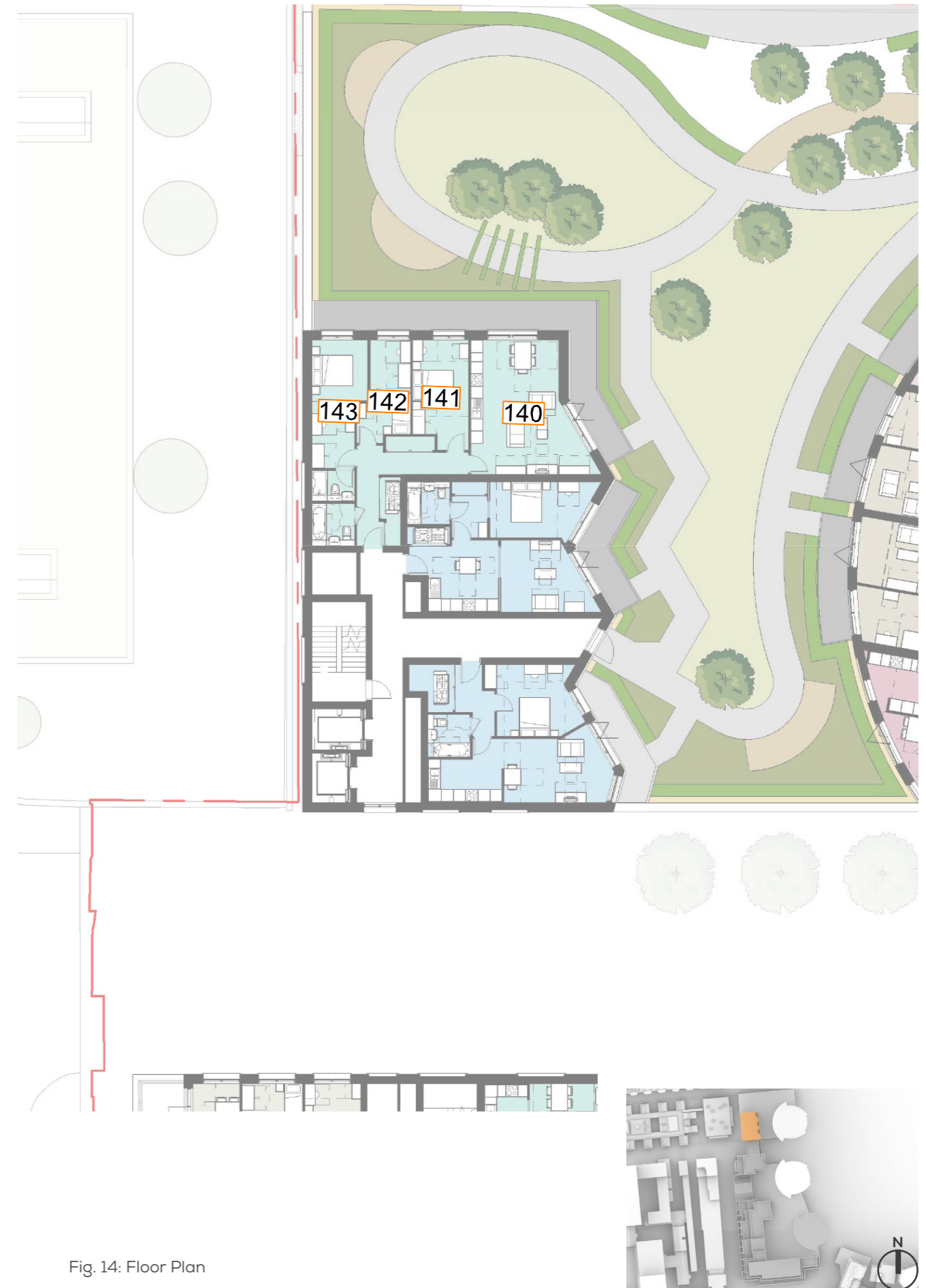


Fig. 14: Floor Plan

Table 14: Assessment Data

FLOOR	ROOM	ROOM USE	AVERAGE DAYLIGHT FACTOR			
			CONSENTED	MAX PARAMETER	LOSS	%
LEVEL 2	144	L/K/D	15	1.4	0.1	6.7
	145	BEDROOM	1.3	1.2	0.1	7.7
	146	BEDROOM	1.6	1.5	0.1	6.3
	147	BEDROOM	1.4	1.3	0.1	7.1

FLOOR	ROOM	ROOM USE	ANNUAL PROBABLE SUNLIGHT HOURS (ROOM)					
			ROOM CONSENTED		ROOM MAX PARAMETER		TOTAL % LOSS	WINTER % LOSS
			TOTAL	WINTER	TOTAL	WINTER		
LEVEL 2	144	L/K/D	6	0	6	0	0.0	0.0
	145	BEDROOM	3	0	3	0	0.0	0.0
	146	BEDROOM	3	0	3	0	0.0	0.0
	147	BEDROOM	3	0	3	0	0.0	0.0



Fig. 15: Floor Plan

Table 15: Assessment Data

FLOOR	ROOM	ROOM USE	AVERAGE DAYLIGHT FACTOR			
			CONSENTED	MAX PARAMETER	LOSS	%
LEVEL 3	148	L/K/D	1.6	1.5	0.1	6.3
	149	BEDROOM	1.3	1.3	0.0	0.0
	150	BEDROOM	1.6	1.5	0.1	6.3
	151	BEDROOM	1.4	1.4	0.0	0.0

FLOOR	ROOM	ROOM USE	ANNUAL PROBABLE SUNLIGHT HOURS (ROOM)					
			ROOM CONSENTED		ROOM MAX PARAMETER		TOTAL % LOSS	WINTER % LOSS
			TOTAL	WINTER	TOTAL	WINTER		
LEVEL 3	148	L/K/D	6	0	6	0	0.0	0.0
	149	BEDROOM	3	0	3	0	0.0	0.0
	150	BEDROOM	3	0	3	0	0.0	0.0
	151	BEDROOM	3	0	3	0	0.0	0.0



Fig. 16: Floor Plan

Table 16: Assessment Data

FLOOR	ROOM	ROOM USE	AVERAGE DAYLIGHT FACTOR			
			CONSENTED	MAX PARAMETER	LOSS	%
LEVEL 4	152	L/K/D	1.6	1.6	0.0	0.0
	153	BEDROOM	1.4	1.3	0.1	7.1
	154	BEDROOM	1.7	1.6	0.1	5.9
	155	BEDROOM	1.5	1.4	0.1	6.7

FLOOR	ROOM	ROOM USE	ANNUAL PROBABLE SUNLIGHT HOURS (ROOM)					
			ROOM CONSENTED		ROOM MAX PARAMETER		TOTAL % LOSS	WINTER % LOSS
			TOTAL	WINTER	TOTAL	WINTER		
LEVEL 4	152	L/K/D	6	0	6	0	0.0	0.0
	153	BEDROOM	3	0	3	0	0.0	0.0
	154	BEDROOM	3	0	3	0	0.0	0.0
	155	BEDROOM	3	0	3	0	0.0	0.0



Fig. 17: Floor Plan

Table 17: Assessment Data

FLOOR	ROOM	ROOM USE	AVERAGE DAYLIGHT FACTOR			
			CONSENTED	MAX PARAMETER	LOSS	%
LEVEL 5	156	L/K/D	1.7	1.6	0.1	5.9
	157	BEDROOM	1.5	1.4	0.1	6.7
	158	BEDROOM	1.8	1.7	0.1	5.6
	159	BEDROOM	1.5	1.5	0.0	0.0

FLOOR	ROOM	ROOM USE	ANNUAL PROBABLE SUNLIGHT HOURS (ROOM)					
			ROOM CONSENTED		ROOM MAX PARAMETER		TOTAL % LOSS	WINTER % LOSS
			TOTAL	WINTER	TOTAL	WINTER		
LEVEL 5	156	L/K/D	6	0	6	0	0.0	0.0
	157	BEDROOM	3	0	3	0	0.0	0.0
	158	BEDROOM	3	0	3	0	0.0	0.0
	159	BEDROOM	3	0	3	0	0.0	0.0



Fig. 18: Floor Plan

Table 18: Assessment Data

FLOOR	ROOM	ROOM USE	AVERAGE DAYLIGHT FACTOR			
			CONSENTED	MAX PARAMETER	LOSS	%
LEVEL 6	160	L/K/D	1.7	1.7	0.0	0.0
	161	BEDROOM	1.5	1.5	0.0	0.0
	162	BEDROOM	1.9	1.8	0.1	5.3
	163	BEDROOM	1.6	1.5	0.1	6.3

FLOOR	ROOM	ROOM USE	ANNUAL PROBABLE SUNLIGHT HOURS (ROOM)					
			ROOM CONSENTED		ROOM MAX PARAMETER		TOTAL % LOSS	WINTER % LOSS
			TOTAL	WINTER	TOTAL	WINTER		
LEVEL 6	160	L/K/D	6	0	6	0	0.0	0.0
	161	BEDROOM	3	0	3	0	0.0	0.0
	162	BEDROOM	3	0	3	0	0.0	0.0
	163	BEDROOM	3	0	3	0	0.0	0.0

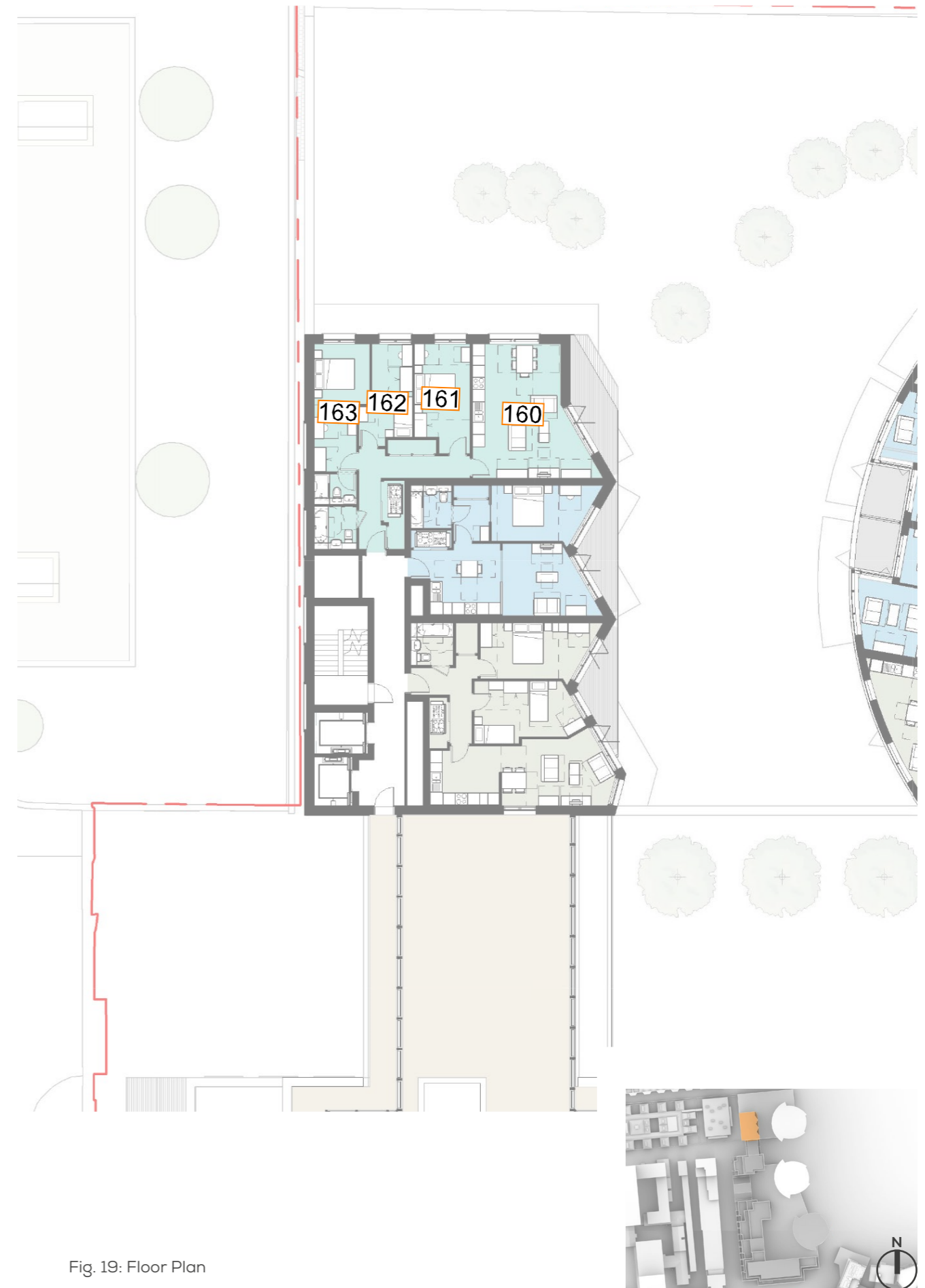


Fig. 19: Floor Plan

Table 19: Assessment Data



FLOOR	ROOM	ROOM USE	AVERAGE DAYLIGHT FACTOR			
			CONSENTED	MAX PARAMETER	LOSS	%
LEVEL 7	164	L/K/D	1.8	1.8	0.0	0.0
	165	BEDROOM	1.6	1.6	0.0	0.0
	166	BEDROOM	1.9	1.9	0.0	0.0
	167	BEDROOM	1.7	1.6	0.1	5.9

FLOOR	ROOM	ROOM USE	ANNUAL PROBABLE SUNLIGHT HOURS (ROOM)					
			ROOM CONSENTED		ROOM MAX PARAMETER		TOTAL % LOSS	WINTER % LOSS
			TOTAL	WINTER	TOTAL	WINTER		
LEVEL 7	164	L/K/D	6	0	6	0	0.0	0.0
	165	BEDROOM	3	0	3	0	0.0	0.0
	166	BEDROOM	3	0	3	0	0.0	0.0
	167	BEDROOM	3	0	3	0	0.0	0.0

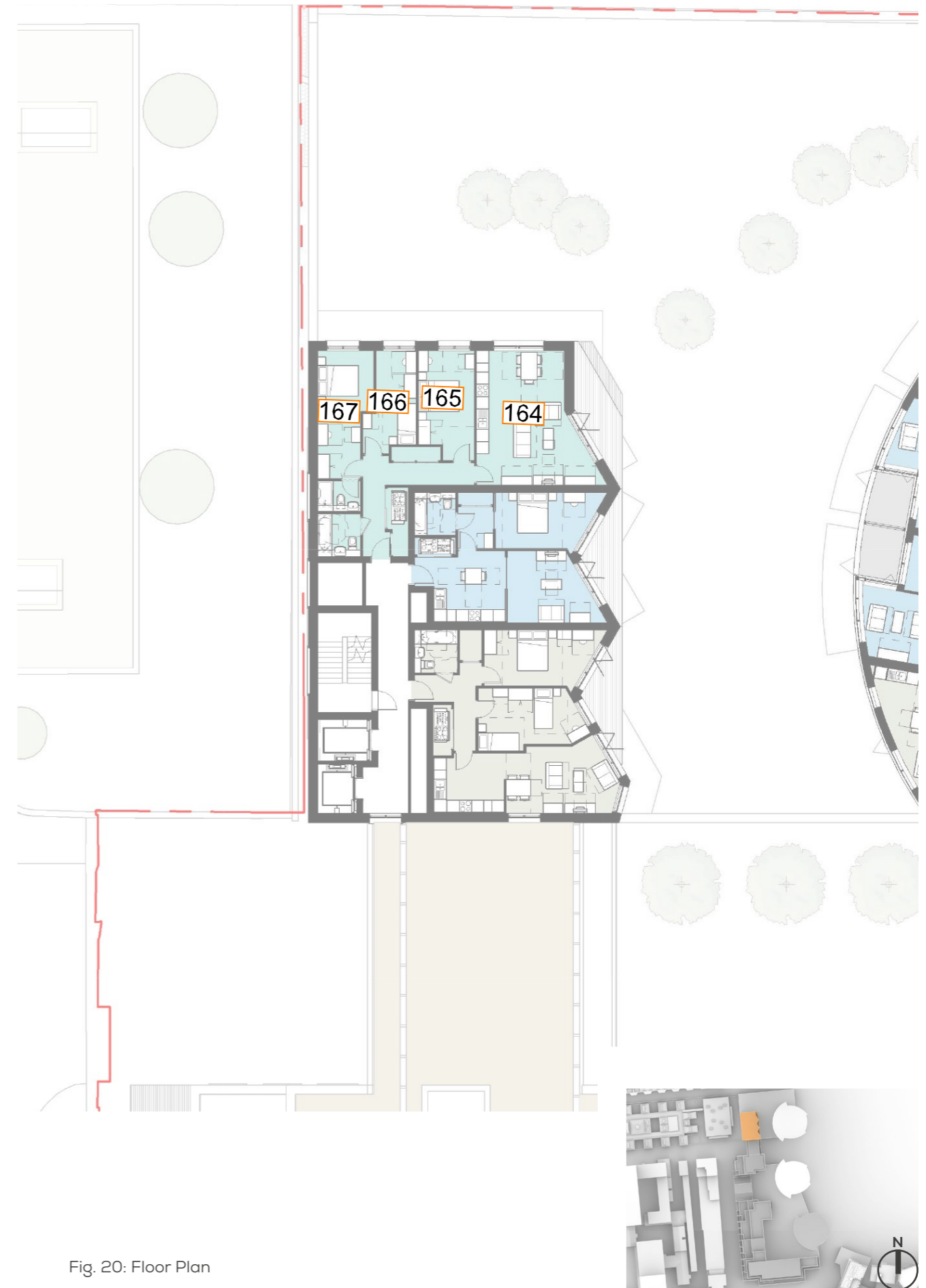


Fig. 20: Floor Plan

Table 20: Assessment Data

FLOOR	ROOM	ROOM USE	AVERAGE DAYLIGHT FACTOR			
			CONSENTED	MAX PARAMETER	LOSS	%
LEVEL 8	168	L/K/D	2.3	2.3	0.0	0.0
	169	BEDROOM	1.7	1.6	0.1	5.9
	170	BEDROOM	2.0	2.0	0.0	0.0
	171	BEDROOM	1.7	1.7	0.0	0.0

FLOOR	ROOM	ROOM USE	ANNUAL PROBABLE SUNLIGHT HOURS (ROOM)					
			ROOM CONSENTED		ROOM MAX PARAMETER		TOTAL % LOSS	WINTER % LOSS
			TOTAL	WINTER	TOTAL	WINTER		
LEVEL 8	168	L/K/D	6	0	6	0	0.0	0.0
	169	BEDROOM	3	0	3	0	0.0	0.0
	170	BEDROOM	3	0	3	0	0.0	0.0
	171	BEDROOM	3	0	3	0	0.0	0.0



Fig. 21: Floor Plan

Table 21: Assessment Data

# DAYLIGHT/SUNLIGHT IMPACTS ON FORMER POPLAR BUS DEPOT - EXISTING V PROPOSED

Average Daylight Factor (ADF) - Annual Probable Sunlight Hours (APSH)

## Southern Tower

FLOOR	ROOM	ROOM USE	AVERAGE DAYLIGHT FACTOR			
			CONSENTED	MAX PARAMETER	LOSS	%
FORMER BUS DEPOT - SOUTHERN TOWER						
LEVEL 1	172	BEDROOM	0.5	0.5	0.0	0.0
	173	L/K/D	3.4	3.4	0.0	0.0
	174	BEDROOM	4.0	3.8	0.2	5.0
	175	BEDROOM	3.0	3.0	0.0	0.0
	176	L/K/D	1.6	1.6	0.0	0.0
	177	L/K/D	1.5	1.5	0.0	0.0
	178	BEDROOM	2.2	2.2	0.0	0.0
	179	L/K/D	1.7	1.7	0.0	0.0
	180	BEDROOM	0.8	0.8	0.0	0.0
	181	BEDROOM	1.4	1.4	0.0	0.0

FLOOR	ROOM	ROOM USE	ANNUAL PROBABLE SUNLIGHT HOURS (ROOM)					
			ROOM CONSENTED		ROOM MAX PARAMETER		TOTAL % LOSS	WINTER % LOSS
			TOTAL	WINTER	TOTAL	WINTER		
FORMER BUS DEPOT - SOUTHERN TOWER								
LEVEL 1	172	BEDROOM	N/A	N/A	N/A	N/A	N/A	N/A
	173	L/K/D	N/A	N/A	N/A	N/A	N/A	N/A
	174	BEDROOM	21	0	21	0	0.0	0.0
	175	BEDROOM	21	0	21	0	0.0	0.0
	176	L/K/D	21	0	21	0	0.0	0.0
	177	L/K/D	17	0	17	0	0.0	0.0
	178	BEDROOM	13	0	13	0	0.0	0.0
	179	L/K/D	21	2	20	2	4.8	0.0
	180	BEDROOM	8	2	8	2	0.0	0.0
	181	BEDROOM	35	9	35	9	0.0	0.0



Fig. 22: Floor Plan

Table 22: Assessment Data

FLOOR	ROOM	ROOM USE	AVERAGE DAYLIGHT FACTOR			
			CONSENTED	MAX PARAMETER	LOSS	%
LEVEL 2	182	BEDROOM	1.2	1.2	0.0	0.0
	183	BEDROOM	0.7	0.7	0.0	0.0
	184	L/K/D	3.2	3.1	0.1	3.1
	185	BEDROOM	3.4	3.3	0.1	2.9
	186	L/K/D	1.7	1.6	0.1	5.9
	187	L/K/D	1.6	1.5	0.1	6.3
	188	BEDROOM	2.6	2.5	0.1	3.8
	189	L/K/D	1.9	1.9	0.0	0.0
	190	BEDROOM	0.8	0.8	0.0	0.0
	191	BEDROOM	1.5	1.5	0.0	0.0

FLOOR	ROOM	ROOM USE	ANNUAL PROBABLE SUNLIGHT HOURS (ROOM)					
			ROOM CONSENTED		ROOM MAX PARAMETER		TOTAL % LOSS	WINTER % LOSS
			TOTAL	WINTER	TOTAL	WINTER		
LEVEL 2	182	BEDROOM	N/A	N/A	N/A	N/A	N/A	N/A
	183	BEDROOM	N/A	N/A	N/A	N/A	N/A	N/A
	184	L/K/D	27	2	25	2	7.4	0.0
	185	BEDROOM	30	0	29	0	3.3	0.0
	186	L/K/D	26	0	26	0	0.0	0.0
	187	L/K/D	25	0	24	0	4.0	0.0
	188	BEDROOM	23	0	21	0	8.7	0.0
	189	L/K/D	29	2	28	2	3.4	0.0
	190	BEDROOM	7	2	7	2	0.0	0.0
	191	BEDROOM	38	9	38	9	0.0	0.0

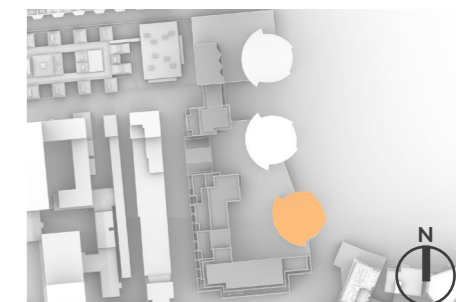
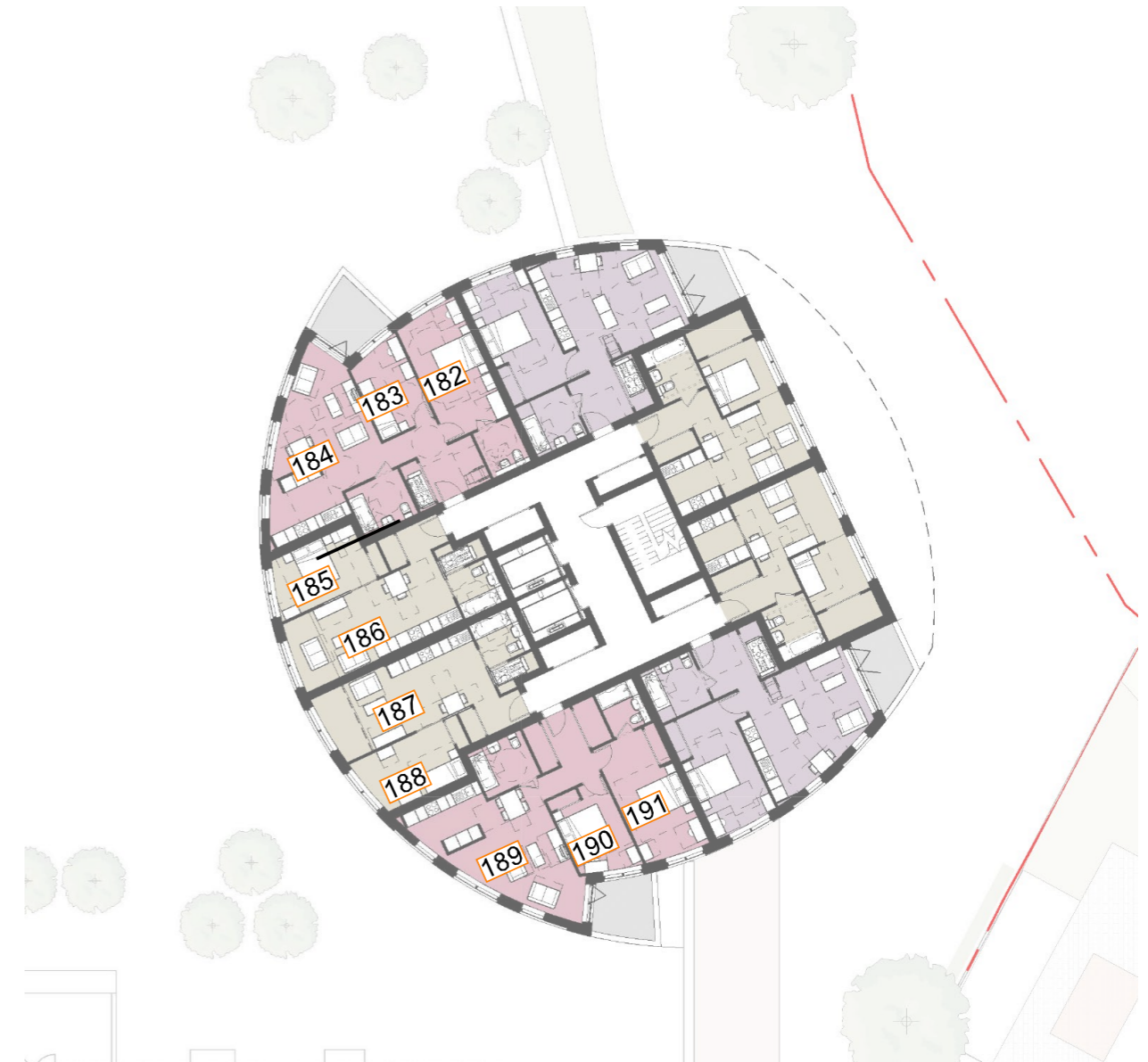


Fig. 23: Floor Plan

Table 23: Assessment Data