

- Small tree**
Girth: 16-18 cm
Approx. tree height: 4-5 m
Approx. canopy diameter: 2 m
- Medium tree**
Girth: 20-25 cm
Approx. tree height: 5-6 m
Approx. canopy diameter: 3 m
- Large tree**
Girth: 35-40 cm
Approx. tree height: 7-8 m
Approx. canopy diameter: 4 m
- XL tree**
Girth: 70-80 cm
Approx. tree height: 8-10 m
Approx. canopy diameter: 5 m
- MULTI STEM TREES**
- Small tree**
Approx. tree height: 2-3 m
Approx. canopy diameter: 1.5 m
- Medium tree**
Approx. tree height: 3.5-4 m
Approx. canopy diameter: 2 m
- Large tree**
Approx. tree height: 5-6 m
Approx. canopy diameter: 3 m

Figure 20: Ground floor Plot B Landscape Scheme received October 26th, 2016



Figure 21: Podium Plot B Landscape Scheme received October 26th, 2016

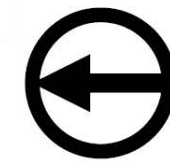
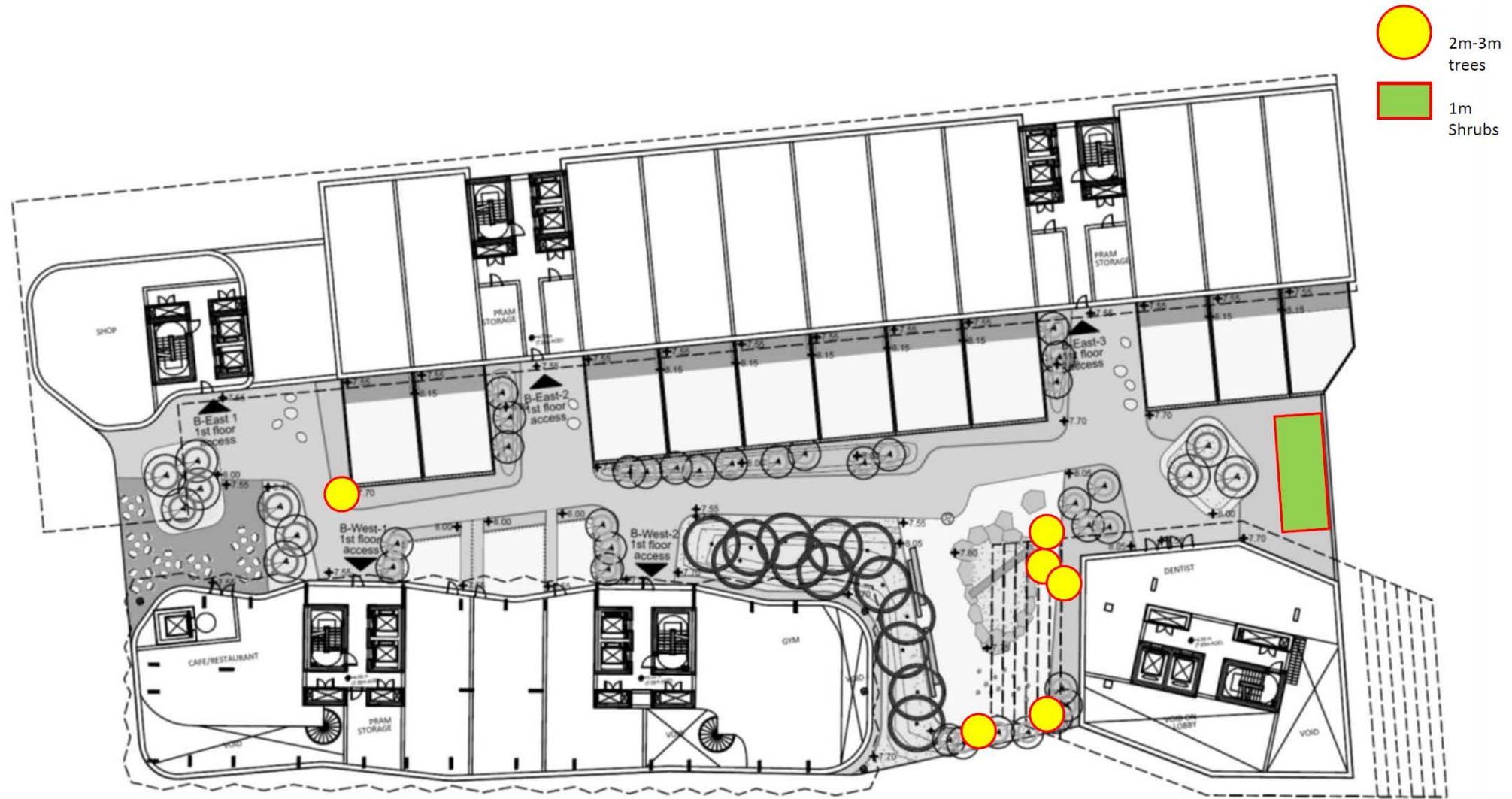


Figure 22: Podium Plot B Landscape Scheme with mark-up of additional mitigation measures

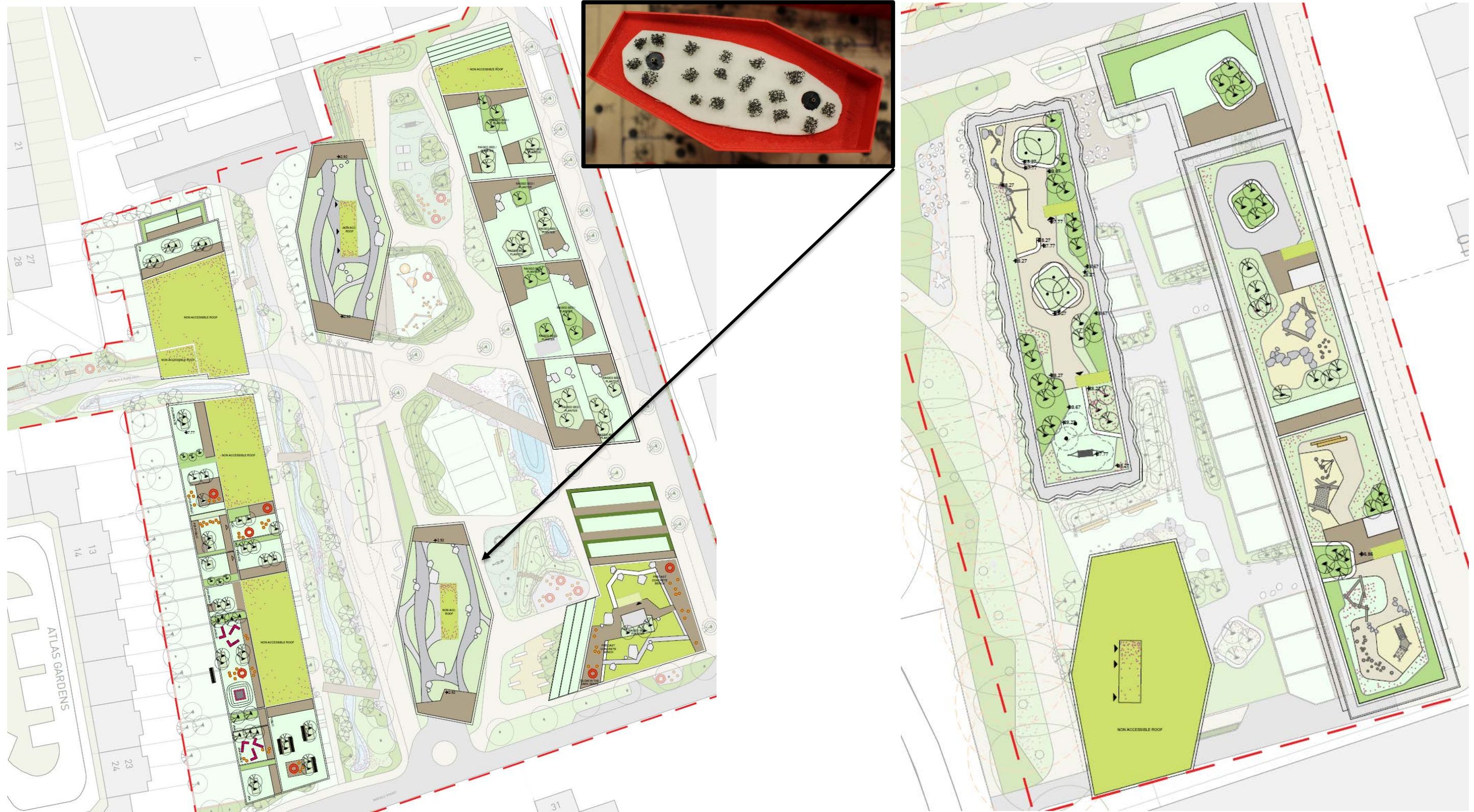


Figure 23: Rooftop Landscaping scheme for Plot A (left) and Plot B (right) received October 17th, 2016, with additional planting on Pavilion 2 Plot A

Appendix E: Possible Mitigation Measures



Figure 24: Example of a localized canopy of 2.5m height, with 1.5m shrubs around the perimeter, placed on probe 133.