

Data Management and Analysis Group

Census Information Note CIN 2008-1



DMAG Briefing 2008-1

January 2008

Census Information Note 2008-1

For more information please contact:

Eileen Howes
Data Management and Analysis Group
Greater London Authority
City Hall
The Queen's Walk
London SE1 2AA

Tel: 020 7983 4657
e-mail: eileen.howes@london.gov.uk

Copyright © Greater London Authority

Any Census data produced in this briefing has been reproduced with the permission of the Controller of Her Majesty's Stationery Office and the Queen's Printer for Scotland and is © Crown Copyright. An acknowledgement of the source is given at the end of each table.

All maps are © Crown Copyright. All rights reserved.
(Greater London Authority) (LA100032379) (2008)

ISSN 1479-7879

2011 Census timetable

It may seem a long way off but the 2011 Census is fast approaching. There will be much continued consultation and testing over the next two years. Then there will be a complete rehearsal of the full census system in 2009, which is the next major test. This will be followed by various stages of legislation:

2011 Census White Paper
The Census Order
The Census Regulations

These are explained in more detail in Census Information Note 2007-2 by Giorgio Finella which was published recently and we will expand on this with a more detailed timetable on our own plans as they develop.

2011 Census news and consultations

ONS summary of responses to consultation on ethnicity, religion, national identity and language

ONS have recently published details of the responses they received to their consultation on ethnicity, national identity, language and religion in the 2011 Census which was undertaken between December 2006 and March 2007. Comments from interested people and organisations were sought so that ONS could get a better understanding of key data requirements, gain an awareness of the range of views held on these topics and to identify the relative priorities for this information given the constraints of space on the census form. The review of ethnic group, national identity, religion and language considers such issues as acceptability of terms, categories included or excluded, collecting national identity separately from ethnic group, continuity with 2001 data on ethnic group and religion, allowing multiple responses in the ethnic group question and level of information required on languages.

ONS have not yet published their response or any recommendations but our reading of the reports would suggest that the format of the ethnic group and religion questions would be unlikely to change substantially as a result of the comments made, but there are likely to be some changes to individual tick boxes. Further question development will continue until recommendations for the 2009 Rehearsal and 2011 Census are made early in 2008. The final proposal will be put to Parliament in early 2010.

Statistical disclosure control (SDC) policy

The statistical disclosure control (SDC) policy adopted by ONS has changed since the 2001 Census data was produced. What might seem like a subtle change of interpretation gives a quite different policy. The change in definition of what constitutes 'disclosure' from identification of a person to identification of something about them that was not previously known makes a big difference to what might be published. As you may well remember, a last minute decision to introduce rounding to all tabulations at a very late stage in discussions about the 2001 Census output caused a lot of ill feeling and substantially damaged some of the 2001 Census outputs, in particular the origin-destination statistics (the special workplace

and migration statistics) for output areas and wards. It seems that with the current SDC policy it would be possible to publish the unrounded total flows without breaching the SDC policy. This was raised with ONS at the ESRC meeting at the Royal Statistical Society on 10th December 2007. Having data for the unrounded total flows would at least allow us to assess the damage to our analyses caused by the rounding and would also give us information on travel and migration movements in which we would have some confidence. It would also ensure that some robust data was available for census analysts in the future.

We hope to avoid these problems with the 2011 Census and await developments with interest. The SDC policy takes on even more significance in the light of the decision on geography -to adopt output areas and lower layer super output areas as the geography for the 2011 Census - reported in CIN 2007-1.

The current position is that ONS are down to a shortlist of three methods of disclosure control plus the rounding option for comparison. Research and assessment of these methods continues.

Topic consultation/fourth page

Full-time and part-time working has been discussed recently at the CLIP Labour Market Sub Group. There has been much lobbying of ONS since it became clear that both hours worked and full-time and part-time working were planned to be dropped from the 2011 Census. ONS have advised that a direct question on full-time and part-time work, with 30 hours per week being the dividing line between the two, works better than a question on hours worked. We hope that the result will be the inclusion of the question, although this is likely to depend upon there being a fourth page of individual questions. The questions which depend upon the fourth page include those on industry, carers, full-time and part-time working, language and income. There is unlikely to be room for all of these. At the moment income looks to be the lowest priority out of these.

ONS are not yet in a position to decide which questions will be included in the 2011 form. The responses on particular topics received by ONS have been summarised and these papers are available to download from:

http://www.statistics.gov.uk/about/consultations/2011Census_response.asp

Statistics Commission Report No. 36, Counting on Success, The 2011 Census - Managing the Risks

This report (available to download on the Statistics Commission's website www.statscom.org.uk) makes a number of recommendations, one of which is that the new Statistics Board should engage all interested parties, including Parliament and the devolved administrations, in building a consensus on how success will be judged for the 2011 Census and publicising the outcome. The report states that judgements will be made based on the expectations and that it will be necessary to have robust information on population movements - that is both international and internal migration - in advance of the 2011 Census. It also comments on a national address register and it suggests that future censuses should be replaced or supplemented by Scandinavian style registers of population, households and businesses. Of course events such as the loss of large amounts of personal data by government

departments or by couriers undermines the idea of a population register and public confidence in such things as national identity cards and population registers.

2011 Census Test - May 2007

The main objectives of the test were to:

Assess the effect on response of the inclusion of an income question; and the use of post out as well as post back

Assess the feasibility of outsourcing the field staff recruitment, pay and training; developing a system that will allow tracking of individual forms; development of an address list and address checking procedures

A few points arising so far from the test:

Response rates were not as low as might have been expected given that the test was voluntary. Around 35 per cent of forms had been returned by the end of the test in Camden, 47 per cent in Liverpool, and between 56 and 66 per cent in all other areas. No one address list was the best in all areas and ONS are planning for a 100 per cent address check in 2011 over a four to six month period. Hand delivery generally resulted in a slightly higher initial return rate for forms but it is felt that the extra initial response (a few percentage points) does not justify the extra cost and the money would be better spent (and the difference made up) by a more targeted follow-up. Forms which included an income question had a lower initial response than those without but the difference appears to be something in the region of 2.9 percentage points in all areas. The significance of this is not yet clear and we await further consideration of it by ONS. The decision on whether or not to include an income question will depend on a number of things including the demand for other questions and the competition for space on the Census form.

ONS expect to publish reports based on the 2007 Census Test. These are:

Statistical Evaluation of the 2007 Census Test, December 2007

2007 Census Test - Evaluation of the delivery method, December 2007

2007 Census Test - Evaluation of the income question, January 2008

Evaluation of the 2007 Census Test - Summary Report, March 2008.

None of these have been published yet.

2001 Census data

Commissioned tables

A large number of commissioned tables have been produced and are all freely available on request from ONS. The GLA holds copies of all these tables. Any that contain ward or district level information are being converted into SASPAC system files and made available to all SASPAC users on the website SASPAC.org.uk.

A CD containing all the commissioned tables currently available from the GLA and the list for searching was distributed at the Census Users' Group meeting on 18th September 2007. Those

who could not attend the meeting should have received their CD through the post. We expect commissioned tables to continue to be produced throughout this year. In particular we will continue to order tables that are requested by members of the consortium.

Samples of Anonymised Records

Consultation on SARs from 2011 Census

The SARs consultation looked at what had been provided previously and what users might want from a 2011 SAR. Local authority users needs are slightly different from academics. We need a less restrictive application process, at least local authority geography and rather than a defined project something like 'Responding to policy initiatives in the local area'.

Early thoughts on what 2011 Census microdata might include are:

- Larger sample sizes – even 100%.
 - More geography in the household file, at least what was available in 1991.
 - Having special topic SARs so more detail in some fields and less in other areas of less importance.
 - Different approach to access, at present only available in a work environment.
- Investigate data on laptops, at home, international comparative work.

The 2001 SAM is small area microdata available for nearly all local authority districts in England and Wales. It contains a five per cent sample of individuals with details on a range of topics. Some of the topics have less detail than in other datasets but the ability to design your own inquiries is likely to be useful. The price of this dataset has now been reduced to £100 per local authority, so if anyone is interested in looking at this data then please contact Giorgio Finella.

Paycheck data

The Census Users' Group meeting of 23rd September 2005 agreed to renew the three year London borough consortium for PayCheck data from CACI. The meeting on 19th December 2005 discussed the CACI data further and agreed to extend this to the equivalised dataset. The data has been paid for by the GLA up to March 2008. The latest data is due shortly. Whenever this is published it will be paid for by the Census Consortium and DMAG.

From April 2008 boroughs who want this data will be asked to pay a share of the cost as the Census budget will not be in a position to pay for the boroughs after the current year. Some initial details of the costs are now available and it is clear that there will be a considerable discount gained by going through the consortium. The conditions of use of this data are important - they will be distributed again with the latest data. Please check with either the GLA or with CACI before publishing any data. CACI have provided some indicative costs if boroughs were to buy it on their own. These are given below:

- 1) If an individual borough wants to buy PayCheck
 - £2,700 a year for a three-year agreement or £2950 for a single year agreement
- 2) A consortium of boroughs wants to buy PayCheck - It could either be a discount of 15% per borough if more than five boroughs join together for example, or we could provide every fifth

license free.

3) The GLA + Functional Bodies - We would offer the partnership licenses at approx 50 - 75% of the full price, dependent on how many joined.

These prices are for PayCheck, similar prices apply to the equivalised data. GLA currently license both PayCheck and Equivalised PayCheck, if buying both datasets there is a further discount of 25% on each dataset. With the GLA paying a share of the costs we anticipate the boroughs paying around £500 each for the standard and equivalised datasets, depending upon how many want to participate. This figure will be confirmed or adjusted later but is good value for money.

Analysis

A number of DMAG Briefings based on Census data have been published recently. They are listed below.

Published

Economic activity rates in London, DMAG Briefing 2007-21, Richard Cameron and Giorgio Finella. This Briefing has been completed and will be circulated shortly.

The following Briefings are in production:

2001 Census Profiles: Black Caribbeans in London by Richard Cameron continues the series of Census profiles.

Housing tenure change 1961 to 2001 by Eileen Howes - this Briefing will provide data on housing tenure from five Censuses and a series of maps showing how each tenure has changed over the last 40 years. The 1961 Census data is based on the London boroughs as they were created in 1964 and not on those current at the time of the 1961 Census. It also includes more detailed change between 1991 and 2001 by ethnic group of household head/HRP.

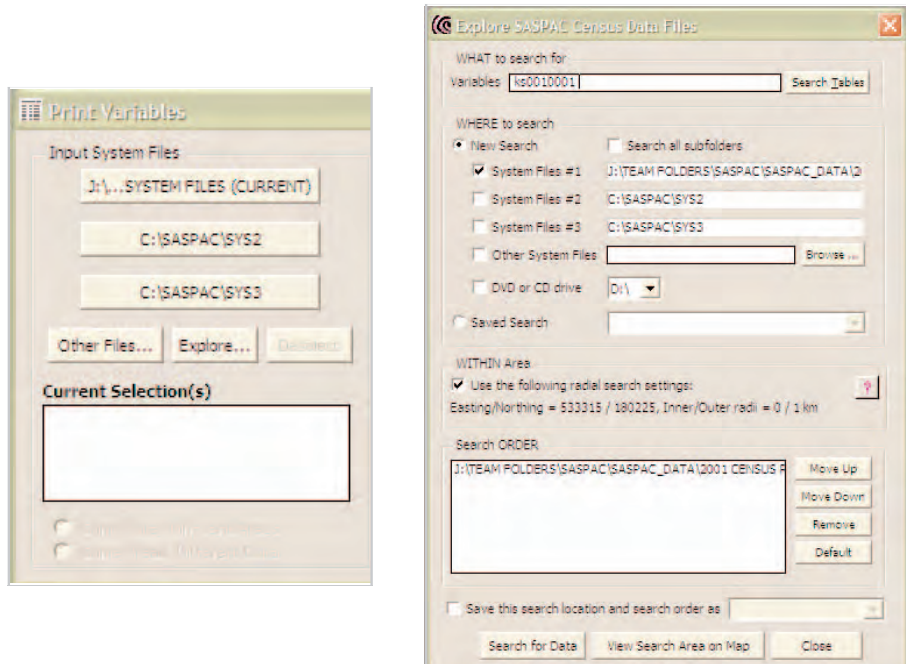
Quality of origin-destination data - this Briefing will use new commissioned tables to assess the quality of the special workplace statistics published by ONS from the 2001 Census, or indeed the damage done to the data by the rounding which was applied to all the tables once they had been produced and before they were published.

The 2001 Census Consortium Purchase and Information Scheme - this Briefing will summarise the arrangements that were made for the 2001 Census Consortium and the costs involved. The intention is that this will help all members of the Consortium to decide whether the arrangement provided value for money for the contributors (of course, we hope very much that it did) and whether they want to participate in a similar arrangement for the 2011 Census. We are suggesting a similar arrangement after initial discussions have indicated that there would be some support for the proposal. As a first step we thought that we should produce a summary of what the arrangements were for the last Census and how they were set up. We will also include details of the financial arrangements and what the money has been spent on as well as the published reports produced, data, training and other services provided.

SASPAC

The next release of SASPAC will be v8.50 and includes a number of new tools and functions:

The first thing you will notice is the improved searching screen menus, which make it easier to query/navigate the Census datasets and find the variable or table of interest. A new 'Explore' button has been added that allows users to search a PC, network or CD/DVD drive for the System file containing the data (Census variable and grid reference) of interest.

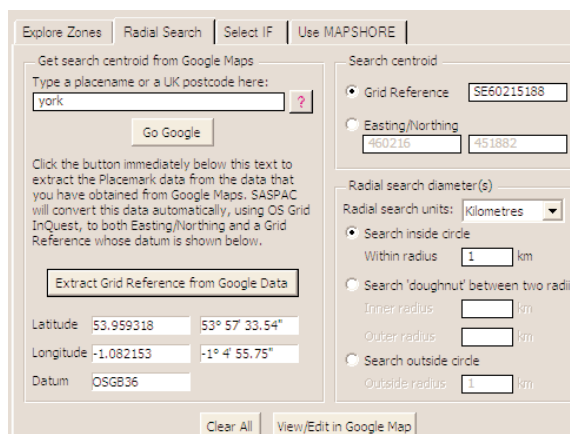


The image shows two screenshots from the SASPAC software. On the left is the 'Print Variables' dialog box, which has a section for 'Input System Files' with buttons for 'J:\...SYSTEM FILES (CURRENT)', 'C:\SASPAC\SYS2', and 'C:\SASPAC\SYS3', along with 'Other Files...', 'Explore...', and 'Default' buttons. Below this is a 'Current Selection(s)' list box. On the right is the 'Explore SASPAC Census Data Files' dialog box. It has a 'WHAT to search for' section with a 'Variables' input field containing '150010001' and a 'Search Tables' button. The 'WHERE to search' section includes radio buttons for 'New Search' and 'Search all subfolders', and checkboxes for 'System Files #1' through '#3' and 'DVD or CD drive'. The 'WITHIN Area' section has a checked box for 'Use the following radial search settings:' and a text box for 'Easting/Northing = 533015 / 180225, Inner/Outer radii = 0 / 1 km'. The 'Search ORDER' section has a list box with 'J:\TEAM FOLDERS\SASPAC\SASPAC_DATA\2001 CENSUS' and buttons for 'Move Up', 'Move Down', 'Remove', and 'Default'. At the bottom are 'Search for Data', 'View Search Area on Map', and 'Close' buttons.

1. Search and select variable/table of interest
- ↓
2. Choose where to search
- ↓
3. Define radial search parameters
- ↓
4. Define search order
- ↓
5. Search for data

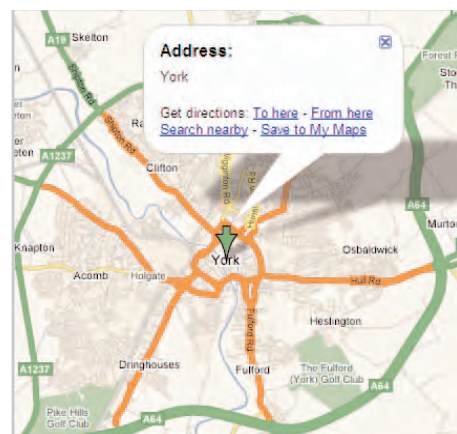
Following the growing popularity of internet-based mapping applications like Google Maps™, Multimap and Streetmap, SASPAC v8.50 allows users to search for a postcode, street name or place name using the Google Maps website (A) (www.maps.google.co.uk). Once a location has been finalised on the map (B) this is sent back to SASPAC and automatically converted from

A

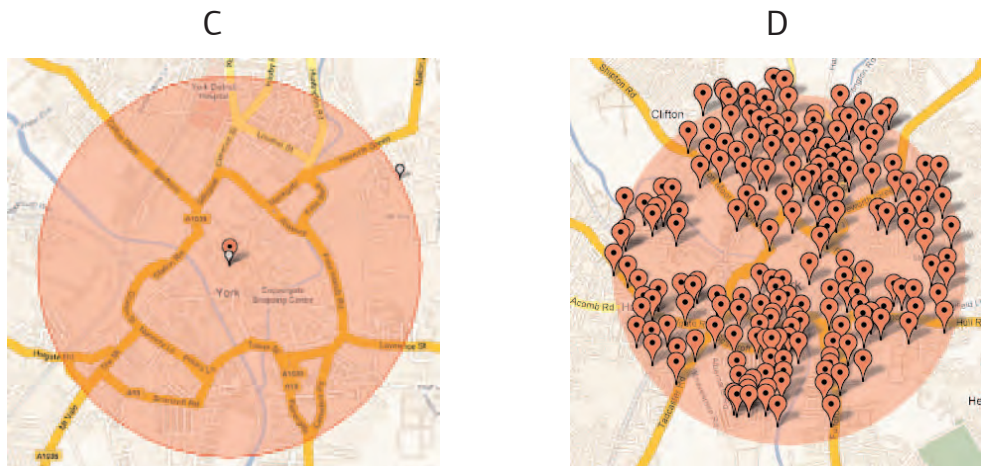


The image shows the 'Explore Zones' dialog box with the 'Radial Search' tab selected. It has a 'Get search centroid from Google Maps' section with a text input field containing 'york' and a 'Go Google' button. Below this is a section for 'Click the button immediately below this text to extract the Placemark data from the data that you have obtained from Google Maps. SASPAC will convert this data automatically, using OS Grid InQuest, to both Easting/Northing and a Grid Reference whose datum is shown below.' with an 'Extract Grid Reference from Google Data' button. The 'Search centroid' section has radio buttons for 'Grid Reference' (selected), 'Easting/Northing', and 'Radial search diameter(s)'. The 'Grid Reference' section has a text input field containing 'SE60215188'. The 'Easting/Northing' section has two text input fields containing '460215' and '451882'. The 'Radial search diameter(s)' section has a 'Radial search units:' dropdown set to 'Kilometres' and a 'Within radius' text input field containing '1'. There are also sections for 'Search inside circle', 'Search "doughnut" between two radii', and 'Search outside circle', each with 'Inner radius', 'Outer radius', and 'Outside radius' text input fields.

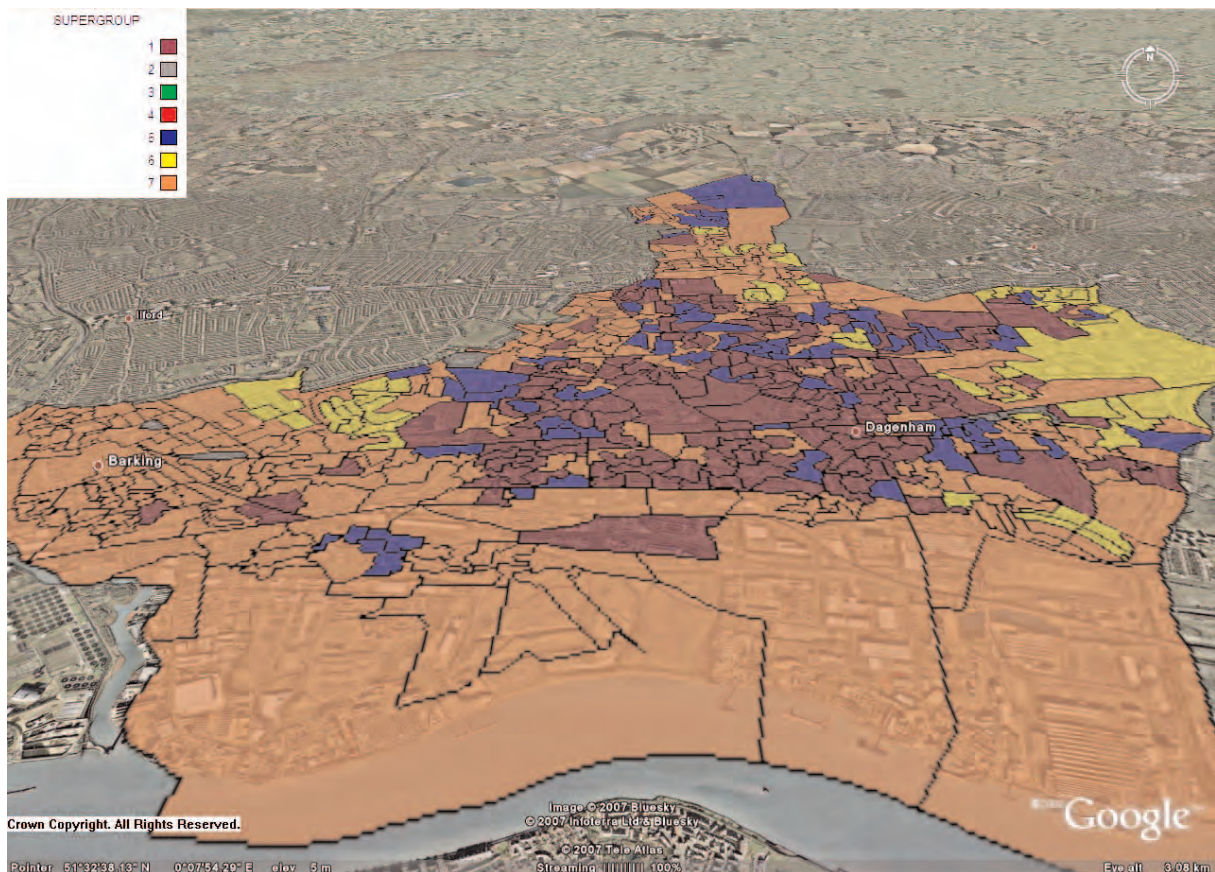
B



a latitude/longitude to a grid reference and Easting/Northing (A). This information can then be used to define the radial search parameters, which are viewed/edited in Google Maps (C) before the search results are visualised (D).



SASPAC's Geographical Information System (GIS) - Mapshore - now includes a Google Earth export tool, which will be available with the release of v8.50. This allows users to export their own images, such as thematic maps, and view these in Google's virtual globe application. Mapshore creates a '.kml' file (format used by Google to display geographic data) in either a raster or vector format, complete with a legend and copyright statement as necessary (see below).



The current GLA and borough consortium membership of the SASPAC Support Scheme runs out at the end of March 2008. Whether or not version 8.50 is out by then, this version will be sent to all members of the consortium. We intend to look at how much money remains in the census consortium budget at that time and to negotiate an extension of the arrangement for at least another year, depending upon how much money is left. Extending for at least another year will ensure that all boroughs will receive version 9 of SASPAC, which is the version that will contain the Instant Atlas upgrade. This will be discussed further at the Census Users' Group meeting to be held at 2pm on 19th March 2008 at City Hall.

If you have any queries at all please contact Alan Lewis at the SASPAC helpdesk on 020 7983 4348 or info@saspac.org.

Training

Bill Armstrong is running a series of SASPAC and Census Training courses. There will be three sessions of training in 2008, each lasting two weeks. The dates are:

Monday 4th February to Friday 15th February
Monday 12th May to Friday 23rd May
Monday 15th September to Friday 26th September

Please contact Bill Armstrong if you would like any further information.

Census Users' Group Meetings

Meetings are held quarterly. The minutes of the meeting held on 18th December 2007 are in Appendix 1. The next meeting is scheduled for Wednesday 19th March 2008 at 2pm in Committee Room 3 at City Hall.

Dates have also been arranged for the three subsequent meetings. They are on:

Wednesday 11th June 2008 at 2pm in Committee Room 3 at City Hall
Wednesday 1st October 2008 at 2pm in Committee Room 2 at City Hall
Tuesday 9th December 2008 in Committee Room 2 at City Hall

Census extranet

The Census extranet is updated regularly by the Census Team. You need a User ID and password to access it. These can be obtained by going to the site at:

<https://extranet.london.gov.uk/>

Some information and data is also available from the SASPAC website at:

<http://www.saspac.org>

Minutes of the Census Users' Group meetings appear on the Extranet, as do these Census Information Notes and other relevant papers and publications.

Census contacts

Appendix 2 gives the name and e-mail address of the main Census Contact in each borough and other relevant organisation. Please check that we have the right person listed and that the e-mail address is correct. If you know of anyone else in your organisation who would like to receive Census Information Notes please let us have their e-mail address.

Appendix 1

Minutes of Census Users Group (CUG) Meeting, 18th December 2007

1. Minutes of the last meeting and matters arising

The minutes of the meeting held on 18th September 2007 were accepted. There were no matters arising.

2. SASPAC What is coming in v8.50

AL demonstrated three new features of SASPAC version 8.50. It was anticipated that this version would be released in February 2008. Integrating web-based tools with SASPAC represents the likely direction for future developments of SASPAC in delivering the 2011 Census results.

I new search facility. The search screen has been slightly redesigned to give a clearer look. There is now an 'explore' button that searches for system files that contain previously selected variables. The chosen location can be any combination of local or networked drives or an external CD or DVD. Neil Storer asked if a file/directory path found by exploring the data could be cut and then pasted into another application. AL replied that it could not do so at present but it would be possible to include this functionality. [This functionality has now been incorporated in the latest test version]

II Google Maps. SASPAC can now use the Google Maps application to search for locations, and select areas. Information is copied between Google Maps and SASPAC using cookies so these must first be enabled on users' machines.

The radial search functionality offered via Google Maps is not new, but it offers users an alternative to using Mapshore for selecting areas and incorporates Google's datasets and user interface.

III Google Earth Export. This tool allows Mapshore's thematic maps to be browsed and integrated with content from Google Earth's virtual globe application and incorporated in users' websites.

3. 2011 Census developments

Census users seemed to be fairly optimistic that ONS would secure the £20m funding required for a fourth page of individual questions, which looks likely to include industry and qualifications questions. The priority of a question on income appears to be lower than that for industry, full and part-time employment, qualifications, carers and language and so it seems unlikely to be included. This is despite tests of income questions showing that it would have little detrimental effect on response. The other topics also depend on there being a fourth page. A decision on the fourth page is expected in the next few months.

I 2011 Information Scheme A recent presentation to borough chief executives included mention of a 2011 Information Scheme at an indicative cost of £20,000 per borough assuming two thirds of the scheme costs to be met by the boroughs and one third from GLA family. Reactions from chief executives appeared not to be negative. Rob Lewis had also mentioned the Information Scheme also in a recent presentation to the Mayor's Management Board.

An Information Scheme can only be between the GLA and the boroughs, agreements between the GLA and Functional Bodies have been and would be set up in future by exchange of letters.

Doug Ogilvie commented that the inclusion of the SASPAC subscription in the 2001 Information Scheme provided a tangible and unique benefit from the Scheme that might not be repeated in 2011 as workplace data were now available on NOMIS. EH replied that it was not yet clear what functionality was available from NOMIS and we would investigate. Availability of tables was only a part of the requirement and this could also be provided by Supertable. The extra functionality needed was rezoning areas and radial searching which were vital in making best use of the origin-destination data. In addition SASPAC provides access to the 1991 workplace data and the 2001 Special Migration Statistics which are not available through NOMIS. EH will be producing a paper setting out the arrangements which had been made for the 2001 Information Scheme, detailing the costs and benefits including commissioned tables, GLA staff expertise, an extensive series of publications analysing the data and (via SASPAC) access to data from earlier Censuses.

AL said that since the outputs from the 2011 Census were unknown, it was not possible to say how SASPAC would need to be developed to handle those outputs.

The 2001 Information Scheme had covered SASPAC subscriptions up to 2009 and after next year boroughs would need to decide individually whether to stay in the Support Scheme. (In fact this should have said up to the end of March 2008).

II 2011 Ethnicity consultation ONS have published a report on the responses to the consultation on ethnicity categories for 2011, which is available from ONS or via GLA. EH would produce a summary of the consultation results, hopefully in CIN 2007-3. There was some discussion about ethnic categories.

III Statistics Commission Report on Risks to the 2011 Census has been published and contains some assessment of how ONS are planning to deal with possible problems in conducting the Census.

IV RSS meeting on statistical disclosure control (SDC)

EH summarised some papers from an RSS/ESRC meeting on this held on December 10. Jane Longhurst, head of disclosure control at ONS gave two presentations, one on disclosure control in general, and one specifically on the 2011 Census. EH gave a presentation on disclosure control from a user perspective.

ONS have accepted that post-tabular adjustment as used in 2001 was very unpopular with users and this has been included in criteria for judging SDC methods for 2011. Three methods have been shortlisted: record swapping, over-imputation and ABS cell perturbation, of which record swapping and over-imputation are pre-tabular. Post-tabular methods are not popular with local government users.

Origin-destination data had been very badly affected by rounding in 2001 and the lack of a

published report like the Workplace and Transport to Work Report published from each Census since 1951 meant that the data available in future from 2001 will be very poor. EH had asked ONS to publish at least the unrounded flows so that we could assess the damage.

Jane Longhurst had agreed to talk to CUG at the March 2008 meeting. The presentations from the RSS meeting were available from DMAG.

4. Report back from Samples of Anonymised Records (SARs) Meeting

The SARs users meeting held in November included some information on ONS plans for 2011 which was reported by GF. On methods of collection, at least 85% of census forms will be posted out, with no more than 15% delivered by enumerators in hard to count areas. ONS hoped that 20% of households will complete forms via the internet. A paper form will still be sent to every household as internet respondents may not fill the form out for all residents.

The 2009 Census Test has slipped from spring to October 2009.

On OA/SOA geographies, ONS expected to make changes to no more than 5% of areas. Changes would be limited to splitting or aggregating 2001 areas; there would be no widespread redrawing of boundaries. EH said that according to David Martin from Southampton University, who was responsible for drawing up the OA/SOAs for 2001, most of the changes to geographies for 2011 would occur in London.

EH said that in order to get useful statistics from detailed tables, we would require a geographic level above Lower layer SOA, and our preferred geography was wards. Mike Collop said that he also required a geography below ward level but above OA, so there was a place for LSOA.

5. DMAG briefings and analysis

i Census Ward Atlas

New DVDs containing the pdf and interactive versions of the ward atlas were available for people to take away. Hard copies had been sent to Census contacts. Additional hard copies were also available at the meeting. Limited additional copies could also be sent out.

ii *Black Caribbean profile*

RC gave a presentation of some key findings from the forthcoming profile of Black Caribbean people in London. Black Caribbeans form a long-standing immigrant group in London, and a group that is more London focused than other groups. The demographic profile of Black Caribbean people reflects this so that the population is older and less mobile than other migrant groups. Movement of Black Caribbean people has tended to be within London, and broadly from Inner London to Outer London.

Many demographic features of Black Caribbean people in London lie between those of other Black groups and the London average. Economically, however, Black Caribbean people have amongst the highest economic activity rates, but also the highest unemployment rates of any ethnic group. This appears to be correlated with relatively low qualifications in the workforce.

iii Census Information Notes CIN 2007-2 and 2007-3

Copies of CIN 2007-2 were distributed at the meeting. This note written by GF set out the legislative timetable for the 2011 Census. GF explained that there were three legal steps towards the 2011 Census:

1. The Census White Paper setting out the aims, questions on the census form and details of fieldwork, data processing and dissemination.
2. The Census Order is laid before parliament, enabling the Census to take place and giving the Census date. And finally
3. The Census Regulations set out the detail of how the Census will be conducted including employment of enumerators and their duties; follow up and dealing with non-compliance; and security and confidentiality. Separate regulations apply for the conduct of the Census in Wales.

It was planned to produce CIN 2007-3 before the Christmas break.

iv Economic Activity Briefing

This was now complete and awaiting publication.

6. SASPAC Training

Bill Armstrong's next SASPAC training sessions will be held for two weeks at the beginning of February. The sessions will cover the new features in SASPAC 8.50 that were demonstrated earlier. This would probably justify a half day course for experienced users.

7. Any other business: Paycheck Data

The latest data would now not be delivered before January. This is the last set to be paid for from the Census budget. The GLA will continue buying these data for the next three years, and had agreed with CACI that a consortium arrangement can continue. The cost of these data for boroughs if purchased through the consortium would be £400 a year because of the GLA contribution and consortium arrangement. This would include the equalised data; the cost if purchasing the data direct from CACI would be £2,700 a year excluding the equalised data.

Further information on these arrangements will be circulated via SEDUG.

8. Dates of meetings in 2008

The next meeting will be held on March 19th 2008. Subsequent dates will be June 11, October 1 and December 9.

Attendance at the Census Users' Group Meeting, 18th December 2007

Corporation of London	Stuart O'Callaghan
Barking and Dagenham	Chris Sale
Barnet	
Bexley	Taryn Eves
Brent	
Bromley	Doug Ogilvie
Camden	Neil Storer
Croydon	Dominick Mennie
Ealing	
Enfield	
Greenwich	Alex Wood
Hackney	Nina Emamy
Hammersmith and Fulham	Alan Brooks
Haringey	Craig Ferguson
Harrow	
Havering	Paul Ekers
Hillingdon	
Hounslow	
Islington	Robin Hall
Kensington and Chelsea	
Kingston upon Thames	Peter Brunton
Lambeth	Georges Sen-Gupta
Lewisham	
Merton	
Newham	Michelle von Ahn
Redbridge	
Richmond upon Thames	
Southwark	
Sutton	
Tower Hamlets	Freda Khamom
Waltham Forest	
Wandsworth	Christine Pollard
Westminster	
Transport for London	Mike Collop
Metropolitan Police	
London Development Agency	
London Fire and Emergency Planning Authority	Phil Jeffries

London Health Observatory	
London Councils	
GLA	Eileen Howes
	Bill Armstrong
	Richard Cameron
	Giorgio Finella
	Alan Lewis
<i>Apologies received</i>	
Ealing	Sally Burrows
Enfield	Colin Rumsey
Haringey	Craig Ferguson
Harrow	Sue Kaminska
Waltham Forest	Mary-Ann Hester
London Health Observatory	Carol Furlong
Metropolitan Police	Yu Cheng Chong

Appendix 2

E-mail addresses of main Census Contacts

Metropolitan Police Service	Andrew Lye	Andrew.Lye@met.police.uk
Transport for London	Mike Collop	mikecollop@tfl.gov.uk
London Fire and Emergency Planning Authority	Phil Jeffries	phil.jeffries@london-fire.gov.uk
London Development Agency	James Sloan	jamesloan@lda.gov.uk
London Councils	Nicola Morton	nicola.morton@londoncouncils.gov.uk
Corporation of London	Lesley Aalbers	lesley.aalbers@corpoflondon.gov.uk
Barking and Dagenham	Chris Sale	csale@barking-dagenham.gov.uk
Barnet	Peter Keeble	peter.keeble@barnet.gov.uk
Bexley	Taryn Eves	taryn.eves@bexley.gov.uk
Brent	Alisdair Maclean	Alisdair.Maclean@Brent.gov.uk
Bromley	Doug Ogilvie	doug.ogilvie@bromley.gov.uk
Camden	Neil Storer	neil.storer@camden.gov.uk
Croydon	Dominick Mennie	dominick.mennie@croydon.gov.uk
Ealing	Naomi Hill	hilln@ealing.gov.uk
Enfield	Colin Rumsey	colin.rumsey@enfield.gov.uk
Greenwich	Alex Wood	alex.wood@greenwich.gov.uk
Hackney	Nina Emamy	nina.emamy@hackney.gov.uk
Hammersmith and Fulham	Alan Brooks	alan.brooks@lbhf.gov.uk
Haringey	Craig Ferguson	craig.ferguson@haringey.gov.uk
Harrow	Sue Kaminska	sue.kaminska@harrow.gov.uk
Havering	Paul Ekers	paul.ekers@havering.gov.uk
Hillingdon	Richard Robbins	Rrobbins@hillingdon.gov.uk
Hounslow	Bill Martin	bill.martin@hounslow.gov.uk
Islington	Robin Hall	robin.hall@islington.gov.uk
Kensington and Chelsea	Nicola Weaver	nicola.weaver@rbkc.gov.uk
Kingston upon Thames	Peter Brunton	peter.brunton@rbk.kingston.gov.uk
Lambeth	Thomas Man	tman@lambeth.gov.uk
Lewisham	Alec MacDonald	Alec.MacDonald@lewisham.gov.uk
Merton	Joe Wogden	Joe.Wogden@merton.gov.uk
Newham	Michelle von Ahn	michelle.von.ahn@newham.gov.uk
Redbridge	Frederick Nuer	Frederick.Nuer@redbridge.gov.uk
Richmond upon Thames	Fiona O'Toole	F.O'Toole@richmond.gov.uk
Southwark	Martin Cook	martin.cook@southwark.gov.uk
Sutton	Patrick Whitter	patrick.whitter@sutton.gov.uk
Tower Hamlets	Marko Stojovic	Marko.Stokjovic@towerhamlets.gov.uk
Waltham Forest	Mary-Ann Hester	mary-ann.hester@walthamforest.gov.uk
Wandsworth	Christine Pollard	cpollard@wandsworth.gov.uk
Westminster	Damian Highwood	dhighwood@westminster.gov.uk

Regular Briefings from the GLA Data Management and Analysis Group (DMAG)

Recent DMAG Briefings:

2006-23	A 2001 Census Ward Atlas of London	Census Team
2007-01	DCLG 2003-based Projections of Households for Greater London	John Hollis
2007-02	Claimant Count Model 2007: Technical Note	Lorna Spence/Caroline Hall
2007-03	Commuting in London	Gareth Piggott
2007-04	Who Benefits?	Lovedeep Vaid/PSU Health
2007-05	Disabled People and the Labour Market in London	Lorna Spence
2007-06	Demography Team Workplan 2007/08	Demography Team
2007-07	Education Team Workplan 2007/08	Education Team
2007-08	Social Exclusion Data Team Workplan 2007/08	Social Exclusion Data Team
2007-09	Child Poverty in London: 2007 Update	Lorna Spence / Lovedeep Vaid
2007-10	Summary of Social Trends 2007	Elizabeth Williams
2007-11	Census Information Note 2007-1	Eileen Howes
2007-12	GLA 2006 Round Ward Population Projections	Caroline Hall/John Hollis
2007-13	Borough and sub-regional demographic profiles 2007	Caroline Hall
2007-14	GLA 2006 Round Ethnic Group Population Projections	Baljit Bains/Ed Klodawski
2007-15	GIS Team Workplan 2007/08	Gareth Baker
2007-17	A profile of Londoners by housing tenure	Lorna Spence
2007-18	Londoners and the Labour Market: key facts	Lorna Spence
2007-19	Benefit Claimants 2006	Lovedeep Vaid
2007-20	The Worker Registration Scheme	Elizabeth Williams
2007-21	Economic activity rates in London	Richard Cameron/Giorgio Finella
2007-22	ONS model based income estimates 2004-05	Lovedeep Vaid
2007-23	Borough Poverty Profiles vNov 2007	Lovedeep Vaid
2007-24	Counting the population	John Hollis (Editor)
2007-25	Census Information Note 2007-2	Giorgio Finella

A full list of DMAG Briefings is available to internal customers through the GLA Intranet; otherwise please contact dmag.info@london.gov.uk. A CD containing PDF versions of the Briefings, or hard copies, can be provided.

Contact details for the Data Management and Analysis Group are as follows:

Census, SASPAC and General Statistics Teams

Eileen Howes (020 7983 4657) is responsible for the work of the **Census, SASPAC and General Statistics Teams** and particularly for Census analysis. *eileen.howes@london.gov.uk*

Bill Armstrong (020 7983 4653) works in the **Census Team** with particular responsibilities for **commissioned tables, workplace data and mapping**. *bill.armstrong@london.gov.uk*

Richard Cameron (020 7983 4473) works in the **Census Team**. *richard.cameron@london.gov.uk*

Giorgio Finella (020 7983 4328) works in the **Census Team**. *giorgio.finella@london.gov.uk*

SASPAC

Alan Lewis (020 7983 4348) leads on the **SASPAC** project. *alan.lewis@london.gov.uk*

General Statistics Team

Gareth Piggott (020 7983 4327) works in the **General Statistics Team** with particular responsibilities for **Focus on London** and **Compendia**. *gareth.piggott@london.gov.uk*

Elizabeth Williams (020 7983 4532) works mostly on **statistical compendia** and **special publications**. *elizabeth.williams@london.gov.uk*

Other DMAG Contacts

Rob Lewis (020 7983 4652) is **Head of the Data Management and Analysis Group**. *rob.lewis@london.gov.uk*

John Hollis (020 7983 4604) is responsible for the work of the **Demography, Education and Social Exclusion Teams**, and particularly for demographic modelling. *john.hollis@london.gov.uk*

Gareth Baker (020 7983 4965) is the **GIS Manager** with responsibility for leading work on **GI** including strategy, the development of data holdings, analysis and dissemination. *gareth.baker@london.gov.uk*

Steve Forgan (020 7983 4185) is the interim **London Analyst Support Site (LASS) Manager** and is responsible for **data exchange & analysis projects** for crime reduction in London. *stephen.forgan@london.gov.uk*

Kelly Rump (020 7983 4655) is the **Business Coordinator**. *kelly.rump@london.gov.uk*

Please use the above descriptions in deciding whom to contact to assist you with your information needs. For further details of DMAG staff please contact Richard Walker at *richard.walker@london.gov.uk*