

International Migration 2007: First Release

Background

On 19th November 2008 the Office for National Statistics (ONS) published the first release of 2007 Total International Migration (TIM) estimates for the UK. TIM is the official estimate of long-term migration covering flows to and from the UK. More detailed TIM data will be released in Spring 2009 as part of the ONS *International Migration MN series*.

The press release and tables are available at the following links:

<http://www.statistics.gov.uk/pdfdir/tim1108.pdf>

<http://www.statistics.gov.uk/STATBASE/Product.asp?vlnk=15053>

In this *Update* migrants are defined as persons intending to stay in the UK or remain outside the UK for at least a year.

Results

In 2007 an estimated 340,000 persons emigrated from the UK (Table 1). This was a decrease of 60,000 persons (15.0 per cent) from the record high emigration of 400,000 persons in 2006 (Figure 1). The international inflow of migrants also declined from 591,000 in 2006 to 577,000 in 2007 (2.4 per cent decrease). Overall net international migration (the difference between immigration and emigration) increased by 46,000 between 2006 and 2007 due to emigration showing a larger decrease than immigration. In 2007, the UK had an estimated net inflow of 237,000 persons.

As for the UK, London experienced a decrease in both immigration and emigration flows between 2006 and 2007 (Figure 2), but saw an increase in net international migration of 17,000 due to the number of emigrants decreasing (25,000 persons) to a greater extent than the number of immigrants (8,000 persons). In 2007 London had a net gain of 70,000 persons due to international migration, this compares to 53,000 in 2006.

Time Trends

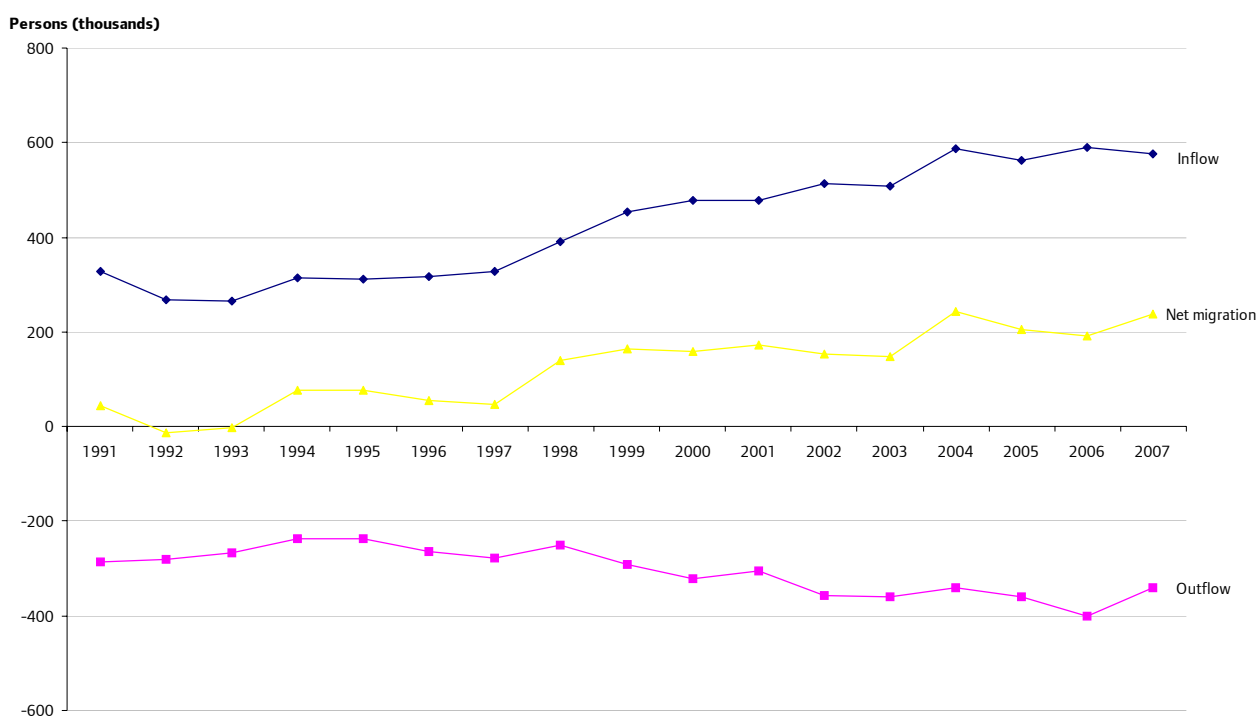
Inflows of international migrants to the UK rose from 1997 to 2004 (Figure 1), and since then have remained fairly stable. The peak inflow of immigrants occurred in 2006, with 591,000 people moving to the UK from overseas. The average inflow since 2004 has been 579,000 a year.

The number of people emigrating from the UK has shown an increasing trend since 1998. However, 2007 is the first year since then in which there has been a large decrease in the flow of international migrants from the UK.

Table 1: International Migration by Country and Region, 2007 (thousands)

	Inflow	Outflow	Net migration
United Kingdom	577	-340	237
Great Britain	567	-334	234
England and Wales	527	-306	221
England	511	-299	212
Wales	16	-7	9
Scotland	41	-28	13
North East	18	-10	8
North West	38	-33	5
Yorkshire and the Humber	43	-20	23
East Midlands	33	-19	14
West Midlands	36	-18	18
East	62	-31	31
London	162	-92	70
South East	84	-54	30
South West	35	-22	14

Figure 1: UK International Migration Flows, 1991 to 2007



London has experienced different patterns of international migration compared with the UK as a whole (Figure 2). In London the increase in immigration occurred earlier and the flow peaked earlier. London had a rapid increase in the inflow of international migrants from 1993 to a peak in 2000 of 206,000. Since 2000 the inflow has decreased, particularly since 2004. However, international immigration to London in 2007 was still much higher than it was for any year prior to 1998.

There has been an annual decline in the percentage of immigrants to the UK who move to London since a peak of 44.8 per cent in 1998 (Figure 3). However, London still receives the largest regional share of international immigration to the UK, with 28.1 per cent of all immigrants in 2007. The South

East region had the next highest proportion of international immigration in 2007 with 14.6 per cent of the UK total.

London is also the region where the largest percentage of people lived before emigrating, 27.1 per cent in 2007.

Figure 2: London International Migration Flows, 1991 to 2007

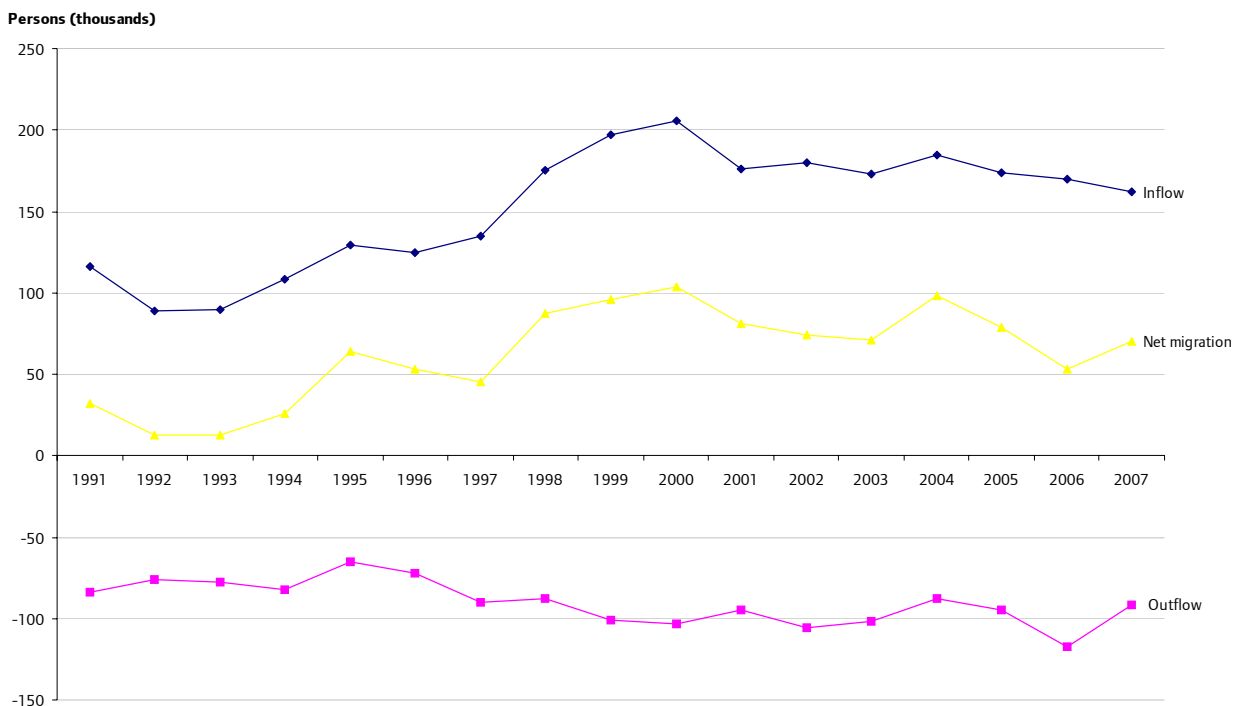
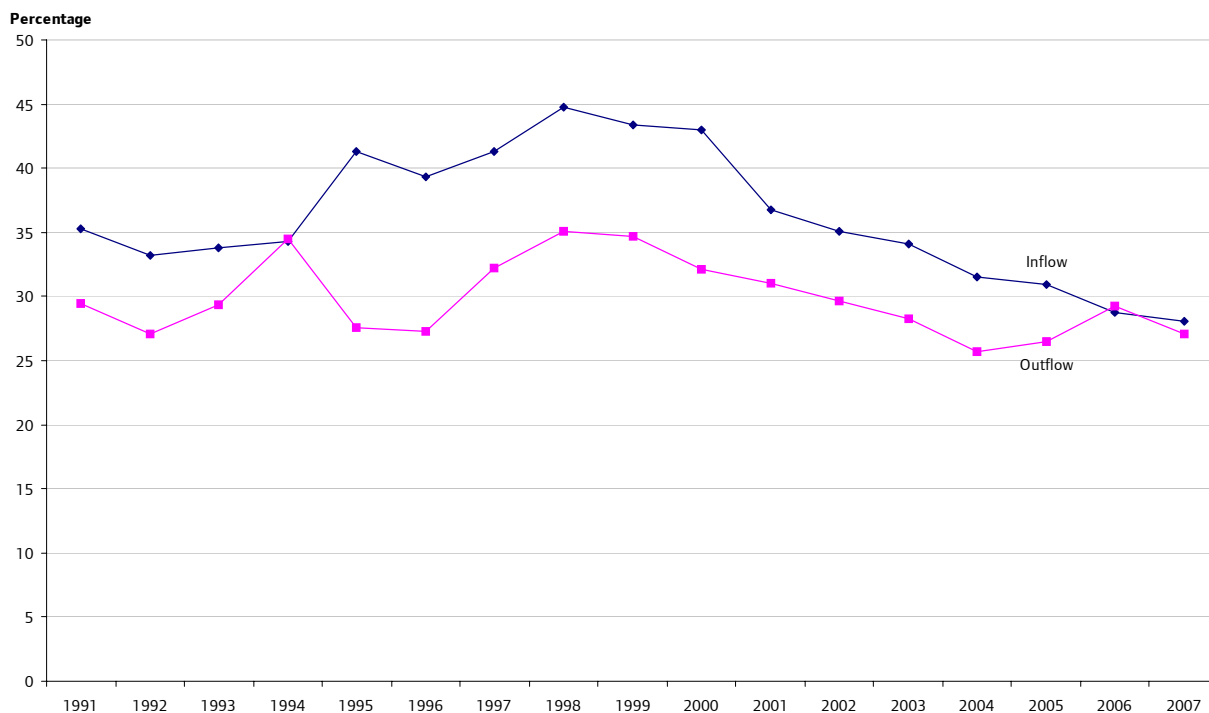


Figure 3: London's Share of the UK's International Migration Flows, 1991 to 2007



Citizenship

There was a decrease in immigration to the UK between 2006 and 2007 for all citizenship groups, except citizens of the European Union (Table 2). The increase in inflows of EU citizens was both for the original EU 15 countries and the EU A8 countries. There were 11 per cent and 22 per cent increases of inflows of immigrants from EU 15 countries and EU A8 countries respectively between 2006 and 2007. International immigration from the EU A8 countries has increased by 111 per cent since these countries joined the EU in 2004.

There has also been a corresponding increase in the number of EU A8 citizens emigrating from the UK since 2004, with a 14 per cent increase in numbers between 2006 and 2007. The EU A8 and the New Commonwealth were the only citizenship groups that showed increases in numbers of emigrants between 2006 and 2007.

The flow of people emigrating from the UK in 2007 was evenly composed of British (50.3 per cent) and non-British citizens (49.7 per cent). However, 87.0 per cent of the inflow was formed of non-British citizens. EU citizens formed the largest (34 per cent) proportion of immigrants to the UK in 2007, followed by Commonwealth citizens (30 per cent) and then citizens classed as Other foreign (23 per cent). Migrants from the EU A8 countries made up 19 per cent of immigrants and 7 per cent of emigrants in 2007.

Table 2: UK International Migration Flows by Citizenship, 2004 to 2007 (thousands)

Year	All citizenships	British	Non-British	European Union	European Union 15	European Union ¹ A8	Commonwealth			Other foreign
							All	Old	New	
Inflow										
2004	586	88	498	128	75	53	215	73	141	155
2005	563	96	466	149	70	76	180	62	117	137
2006	591	81	510	167	71	92	201	62	139	142
2007	577	75	502	197	79	112	174	45	130	131
Outflow										
2004	-342	-195	-147	-42	-38	-3	-53	-33	-19	-52
2005	-359	-185	-174	-54	-39	-15	-60	-37	-23	-59
2006	-400	-207	-194	-66	-44	-22	-67	-42	-24	-61
2007	-340	-171	-169	-68	-41	-25	-58	-31	-26	-43
Balance										
2004	244	-107	351	85	37	49	162	40	122	104
2005	204	-89	293	95	31	61	120	25	94	78
2006	191	-126	316	100	27	71	134	20	115	81
2007	237	-96	333	128	38	87	117	13	103	88

A full table for 1991 to 2007 is given in Appendix Table 2 with complete footnotes.

Comparison with International Flows in Mid-year Estimates

Estimates of international migration are one of the main components that are used by ONS to estimate the mid-year population of local authorities in England and Wales and are particularly important for most London boroughs. In the change analysis accompanying the mid-2007 estimates London was shown to have had an international inflow from mid-2006 to mid-2007 of 172,000 and an outflow of 121,000, leaving a net inflow of 51,000. A comparison with the data for 2006 and 2007 in Appendix Table 1 shows that each of the estimated flows for 2006-07 was outside the range of the two adjacent annual figures. In fact, the estimated outflow in 2006-07 was the highest since the current series started in 1991 and the net inflow was the lowest since 1997.

The estimation of the regional flows is largely based on the relatively small national samples from the International Passenger Survey (IPS), with the inflows apportioned using data from the Labour Force Survey. While these are the best estimates we have of long-term international migration the data have relatively high confidence intervals and too much reliance should not be placed on individual annual figures as indicators of changes in trends. ONS will publish the IPS confidence intervals for 2007 in the *International Migration MN series* reference volume.

Appendix Table 1: International Migration by Country and Region, 1991 to 2007 (thousands)

Year	United Kingdom ¹	Great Britain	England and Wales	England	Wales	Scotland ²	North East	North West	Yorkshire and the Humber	East Midlands	West Midlands	East	London	South East	South West
Inflow															
1991	329	325	304	294	10	21	7	17	22	14	16	28	116	53	21
1992	268	265	251	245	6	14	7	22	15	13	10	23	89	50	17
1993	266	264	249	242	7	15	5	16	18	12	16	21	90	48	17
1994	315	313	292	284	8	21	6	22	16	14	20	29	108	51	18
1995	312	311	299	290	10	11	3	20	15	12	19	22	129	54	17
1996	318	315	300	291	8	16	3	18	14	15	26	26	125	46	19
1997	327	324	310	299	12	14	12	21	16	15	17	20	135	41	22
1998	391	390	370	362	8	20	6	25	15	14	18	29	175	60	19
1999	454	451	424	416	8	27	8	21	26	14	22	35	197	68	25
2000	479	474	446	438	8	28	8	25	31	14	23	36	206	69	26
2001	479	475	448	438	10	27	12	30	36	20	32	39	176	66	26
2002	513	508	483	472	11	25	11	39	38	26	35	40	180	70	33
2003	508	504	478	468	10	26	10	36	38	30	34	42	173	71	34
2004	586	582	546	535	12	36	13	48	51	35	34	46	185	76	46
2005	563	557	520	509	11	37	16	40	48	38	32	50	174	70	41
2006	591	583	545	530	15	38	15	43	49	37	33	60	170	81	43
2007	577	567	527	511	16	41	18	38	43	33	36	62	162	84	35
Outflow															
1991	-285	-280	-253	-245	-8	-27	-4	-22	-16	-9	-21	-25	-84	-43	-22
1992	-281	-275	-248	-240	-8	-27	-5	-20	-17	-13	-16	-26	-76	-44	-21
1993	-266	-262	-244	-235	-9	-18	-5	-17	-14	-13	-15	-29	-78	-48	-15
1994	-238	-234	-216	-209	-6	-18	-5	-15	-11	-10	-13	-26	-82	-31	-15
1995	-236	-232	-216	-210	-6	-16	-3	-24	-14	-12	-13	-17	-65	-40	-22
1996	-264	-260	-238	-230	-8	-22	-5	-21	-12	-11	-20	-16	-72	-56	-16
1997	-279	-272	-244	-239	-6	-28	-12	-12	-14	-15	-13	-21	-90	-43	-19
1998	-251	-245	-223	-217	-6	-22	-4	-17	-13	-10	-12	-21	-88	-34	-17
1999	-291	-286	-273	-268	-5	-13	-5	-26	-17	-17	-18	-22	-101	-45	-18
2000	-321	-315	-291	-284	-7	-23	-7	-20	-13	-17	-17	-20	-103	-64	-23
2001	-306	-302	-279	-270	-9	-23	-6	-22	-19	-13	-17	-30	-95	-50	-20
2002	-358	-354	-323	-313	-9	-32	-10	-22	-20	-16	-24	-28	-106	-60	-27
2003	-361	-354	-331	-323	-8	-23	-13	-24	-18	-17	-23	-35	-102	-53	-37
2004	-342	-338	-309	-298	-11	-29	-6	-34	-20	-18	-16	-29	-88	-54	-33
2005	-359	-356	-326	-316	-10	-30	-8	-39	-19	-21	-19	-31	-95	-57	-29
2006	-400	-397	-371	-361	-10	-26	-14	-36	-29	-21	-29	-36	-117	-53	-26
2007	-340	-334	-306	-299	-7	-28	-10	-33	-20	-19	-18	-31	-92	-54	-22
Balance															
1991	+44	+45	+51	+49	+2	-6	+3	-4	+6	+5	-5	+4	+32	+10	-1
1992	-13	-10	+4	+6	-2	-13	+1	+1	-2	-1	-6	-3	+13	+6	-4
1993	-1	+2	+5	+6	-1	-3	-1	-1	+4	-1	+1	-8	+13	-1	+2
1994	+77	+79	+77	+75	+2	+3	+1	+7	+4	+4	+7	+2	+26	+20	+3
1995	+76	+79	+83	+80	+4	-4	-	-5	+1	-	+6	+5	+64	+14	-5
1996	+55	+56	+62	+61	-	-6	-2	-3	+2	+3	+5	+10	+53	-10	+3
1997	+48	+45	+66	+60	+6	-14	-	+9	+2	-	+4	-1	+45	-1	+3
1998	+140	+145	+147	+145	+2	-2	+2	+8	+3	+4	+6	+8	+87	+26	+2
1999	+163	+164	+151	+148	+3	+13	+3	-4	+9	-3	+4	+13	+96	+23	+7
2000	+158	+159	+154	+154	-	+5	+2	+4	+17	-4	+6	+16	+104	+4	+3
2001	+173	+173	+169	+168	+1	+3	+6	+9	+18	+7	+15	+9	+81	+17	+7
2002	+154	+153	+160	+159	+1	-7	+1	+17	+18	+10	+11	+12	+74	+10	+6
2003	+147	+150	+147	+145	+2	+3	-3	+12	+20	+13	+12	+7	+71	+18	-3
2004	+244	+244	+237	+236	+1	+7	+7	+14	+31	+17	+17	+18	+98	+22	+13
2005	+204	+201	+194	+193	+1	+7	+7	+1	+29	+17	+13	+19	+79	+14	+12
2006	+191	+186	+174	+169	+5	+12	+1	+7	+20	+16	+4	+23	+53	+28	+17
2007	+237	+234	+221	+212	+9	+13	+8	+5	+23	+14	+18	+31	+70	+30	+14

© Crown copyright 2008.

The 1991-2005 estimates were revised following changes to the TIM methodology in November 2007. Therefore they may not agree with estimates published previously.

1 Northern Ireland data are included in the United Kingdom total but are no longer shown separately. The methodology for Northern Ireland is currently under review as there are factors that make it particularly difficult to estimate international migration into and out of Northern Ireland.

2 The estimates for Scotland have been revised. However, international migration estimates for Scotland for the purposes of estimating population change will not be revised and so there may be some differences.

Figures have been rounded independently and may not add to totals

+denotes a net inflow

-denotes a net outflow

Appendix Table 2: UK International Migration Flows by Citizenship, 1991 to 2007

Year	All citizenships	British	Non-British	European Union ¹	European Union ¹ 15	European Union ¹ A8	Commonwealth ²		Other foreign ³	
							All	New		
Inflow										
1991	329	110	219	53	53	:	85	26	59	82
1992	268	93	175	44	44	:	65	18	46	67
1993	266	86	179	44	44	:	70	23	47	65
1994	315	109	206	50	50	:	80	21	59	76
1995	312	84	228	61	61	:	85	27	58	82
1996	318	94	224	72	72	:	78	29	49	74
1997	327	90	237	71	71	:	90	31	59	76
1998	391	104	287	82	82	:	105	54	51	101
1999	454	115	338	66	66	:	123	55	68	150
2000	479	99	379	63	63	:	147	56	91	169
2001	479	110	370	57	57	:	149	65	84	164
2002	513	97	416	59	59	:	155	63	92	201
2003	508	99	409	64	64	:	167	62	105	177
2004	586	88	498	128	75	53	215	73	141	155
2005	563	96	466	149	70	76	180	62	117	137
2006	591	81	510	167	71	92	201	62	139	142
2007	577	75	502	197	79	112	174	45	130	131
Outflow										
1991	-285	-154	-130	-53	-53	:	-35	-18	-17	-43
1992	-281	-155	-126	-38	-38	:	-31	-18	-13	-57
1993	-266	-149	-118	-40	-40	:	-34	-17	-17	-43
1994	-238	-125	-113	-42	-42	:	-31	-14	-17	-40
1995	-236	-135	-101	-38	-38	:	-29	-18	-12	-34
1996	-264	-156	-108	-44	-44	:	-32	-17	-14	-32
1997	-279	-149	-131	-53	-53	:	-40	-20	-20	-37
1998	-251	-126	-126	-49	-49	:	-33	-20	-13	-44
1999	-291	-139	-152	-59	-59	:	-41	-29	-12	-52
2000	-321	-161	-160	-57	-57	:	-47	-32	-15	-55
2001	-306	-158	-149	-49	-49	:	-51	-32	-19	-49
2002	-358	-185	-174	-52	-52	:	-58	-42	-16	-64
2003	-361	-191	-171	-50	-50	:	-59	-42	-17	-62
2004	-342	-195	-147	-42	-38	-3	-53	-33	-19	-52
2005	-359	-185	-174	-54	-39	-15	-60	-37	-23	-59
2006	-400	-207	-194	-66	-44	-22	-67	-42	-24	-61
2007	-340	-171	-169	-68	-41	-25	-58	-31	-26	-43
Balance										
1991	+44	-44	+89	-1	-1	:	+50	+8	+42	+39
1992	-13	-62	+49	+5	+5	:	+34	-	+33	+10
1993	-1	-62	+62	+4	+4	:	+36	+6	+30	+22
1994	+77	-16	+94	+9	+9	:	+49	+7	+42	+36
1995	+76	-51	+127	+23	+23	:	+56	+9	+46	+48
1996	+55	-62	+116	+28	+28	:	+47	+12	+35	+41
1997	+48	-59	+107	+18	+18	:	+50	+11	+39	+38
1998	+140	-22	+162	+33	+33	:	+72	+34	+38	+57
1999	+163	-24	+187	+8	+8	:	+82	+26	+56	+98
2000	+158	-62	+220	+6	+6	:	+100	+24	+76	+114
2001	+173	-48	+221	+8	+8	:	+98	+33	+65	+115
2002	+154	-87	+242	+7	+7	:	+97	+21	+77	+137
2003	+147	-91	+238	+14	+14	:	+109	+20	+88	+115
2004	+244	-107	+351	+85	+37	+49	+162	+40	+122	+104
2005	+204	-89	+293	+95	+31	+61	+120	+25	+94	+78
2006	+191	-126	+316	+100	+27	+71	+134	+20	+115	+81
2007	+237	-96	+333	+128	+38	+87	+117	+13	+103	+88

© Crown copyright 2008.

: Not applicable

The 1991-2005 estimates were revised following changes to the TIM methodology in November 2007. Therefore they may not agree with estimates published previously.

1 European Union estimates are for the EU15 (Austria, Belgium, Denmark, Finland, France, Germany, Greece, the Irish Republic, Italy, Luxembourg, Netherlands, Portugal, Spain and Sweden) from 1991-2003, EU25 (EU15 and A8 groupings plus Malta and Cyprus) from 2004-2006, and for the EU27 (EU25 plus Bulgaria and Romania) from 2007. Estimates are also shown separately for the EU15 and the A8 (the Czech Republic, Estonia, Hungary, Latvia, Lithuania, Poland, Slovakia and Slovenia). British citizens are excluded from all groupings and shown separately.

2 From 2004 onwards, All and the New Commonwealth excludes Malta and Cyprus.

3 From 2004 onwards, Other foreign excludes the eight central and eastern European member states that joined the EU in May 2004. From 2007 onwards, Other foreign excludes Bulgaria and Romania which joined the EU in January 2007.