

## Unemployment in London – February 2011

### Latest Results

January 2011 marked one year since the UK recession ended in the final quarter of 2009. This *Update* looks at key labour market indicators before, during and after the recession period. It presents the latest National and London figures of those claiming Jobseekers Allowance (JSA) and also shows the official unemployment measure: the International Labour Organisation (ILO) definition, which is derived from the Annual Population Survey. In addition, it gives figures for employment levels.

The claimant count totalled 1.44 million people in Great Britain in January 2011, a decrease of ten per cent on the level one year ago. In London the decrease over the same period was lower at five per cent from 225,000 in January 2010 to 214,000 in January 2011. The Great Britain claimant count in January 2011 is equivalent to 60 per cent of the ILO Unemployed<sup>1</sup>, compared with 57 per cent in London (see the background section for an explanation of the differences).

Overall, London had an unemployment rate<sup>2</sup> for the quarter Oct-Dec 2010 of 9.0 per cent, the fourth highest behind Yorkshire and the Humber, the West Midlands and the North East, and 1.1 percentage points higher than the GB rate (See Chart 1). Unemployment levels in London remained stable at 373,000. Elsewhere, unemployment increased in all but three regions over the last year with 16,000 more people out of work in Great Britain in Oct-Dec 2010 than Oct-Dec 2009 (see Table 1). Northern Ireland saw the largest increase of any region at 19,000 followed by the East Midlands at 18,000. The North West saw a decrease in unemployment levels of 31,000, whilst the South East and South West also saw decreases of 3,000 and 7,000 respectively.

**Table 1: ILO Unemployed for the regions and UK, Oct-Dec 2010 (Seasonally adjusted)**

	Unemployment		Change on a year ago	
	No (000's)	Rate (%)	No (000's)	Rate (%)
North East	129	10.2	12	0.9
North West	258	7.5	-31	-1.0
Yorkshire and the Humber	244	9.3	4	0.2
East Midlands	185	8.0	18	0.8
West Midlands	261	9.8	9	0.4
East	198	6.6	4	0.1
London	373	9.0	0	-0.1
South East	273	6.1	-3	-0.1
South West	165	6.1	-7	-0.3
England	2,085	7.8	5	-0.1
Wales	123	8.4	1	-0.2
Scotland	216	8.0	10	0.4
Northern Ireland	68	8.0	19	2.0
Great Britain	2,424	7.9	16	0.0
United Kingdom	2,492	7.9	35	0.1

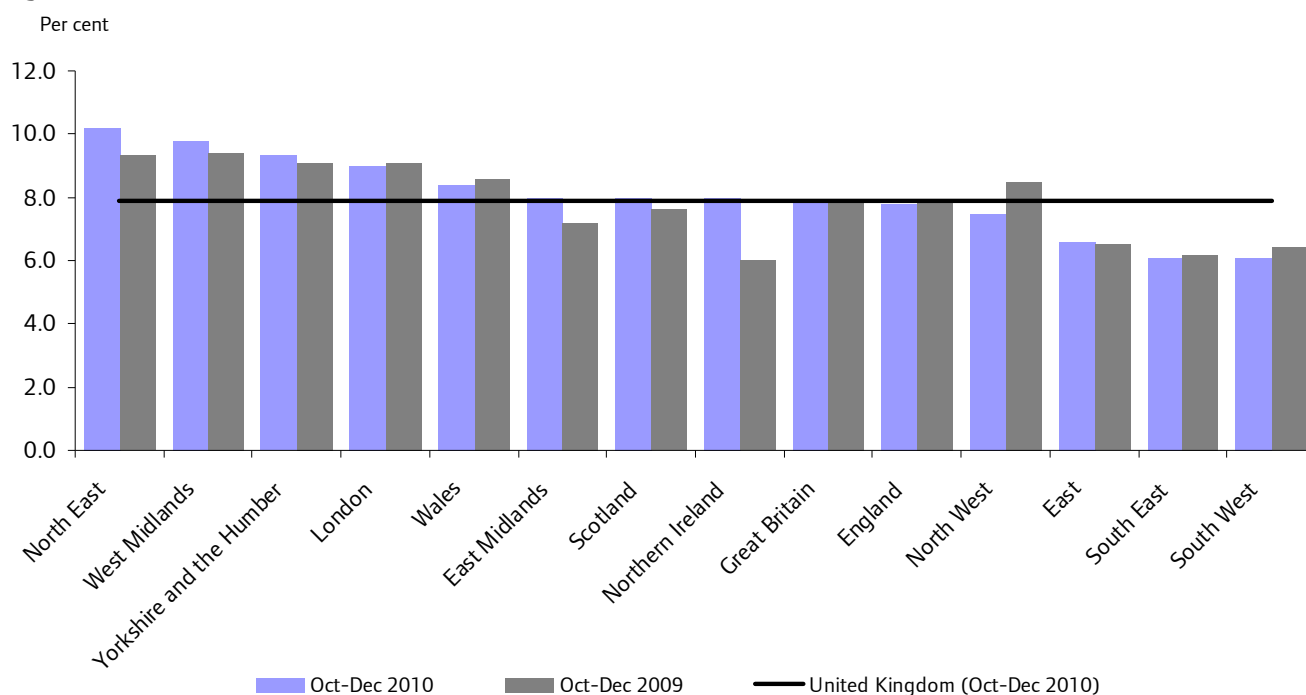
Source: Labour Force Survey.

Notes: Change rates are calculated as a percentage of the economically active aged 16+

<sup>1</sup> Seasonally adjusted

<sup>2</sup> Expressed as a percentage of all economically active population aged 16 or over.

**Chart 1: ILO unemployment rates for regions, October-December 2008 and 2009 (seasonally adjusted)**



Source: Labour Force Survey

There are clear differences between London and the other regions in terms of the characteristics of the unemployed – 44 per cent of London’s unemployed in the last quarter of 2010 were women, compared with a national figure of 42 per cent. The latest figures for London show the proportion of economically active men and women who are unemployed to be roughly equal (see Table 2). In all other regions, the female rate is clearly lower than the male unemployment rate. The number of unemployed men in London has grown by 7,000 in the last year compared with a fall of 4,000 in the number of unemployed women.

**Table 2: Change in ILO unemployed in London (seasonally adjusted)**

	Oct-Dec 2010		Change on previous quarter		Change on previous year	
	000's	%	000's	%	000's	%
People	373	9.0	1	0.0	0	-0.1
Men	209	9.0	2	0.0	7	0.0
Women	164	8.9	0	0.0	-4	-0.8

Source: Labour Force Survey

Notes: All figures are for population aged 16 and over. Unemployment rates are calculated as a percentage of the total economically active aged 16+. Change rates are calculated as a percentage of change in the level of unemployment.

While unemployment is a key labour market indicator, a fuller picture can be gained by looking at alternative indicators. Table 3 gives employment estimates for the Oct-Dec 2010 quarter and shows that there were almost 3.8 million London residents in employment, of which 55 per cent are men, a higher proportion than in other regions. The overall employment rate in London, that is the percentage of the working-age population in paid employment, is below average for Great Britain, at 69 per cent, compared with 71 per cent nationally. This is entirely due to the relatively low rate amongst women, as the employment rate for London’s men is very close to the national average.

The total number of Londoners in employment in Oct-Dec 2010 was 77,000 greater than during the same period a year earlier. This is equivalent to an increase of two per cent, the second largest percentage increase regionally and almost 1.5 percentage points higher than the GB figure.

**Table 3: Employment for the regions and the UK, October to December 2010 (seasonally adjusted).**

	Total		Male		Female		Change on year ago	
	No (000's)	Rate (%)	No (000's)	Rate (%)	No (000's)	Rate (%)	No (000's)	Rate (%)
North East	1,129	65.6	600	70.0	529	61.3	-17	-3.4
North West	3,162	69.3	1,690	74.0	1,472	64.7	60	-1.1
Yorkshire & the Humber	2,386	68.2	1,263	71.9	1,122	64.5	-8	-2.5
East Midlands	2,117	70.7	1,152	76.5	965	64.8	-20	-3.9
West Midlands	2,410	67.9	1,297	72.9	1,112	62.9	-22	-2.6
East	2,810	73.9	1,537	80.5	1,273	67.4	34	-2.3
London	3,788	68.5	2,102	75.8	1,685	61.2	77	-0.2
South East	4,181	75.0	2,224	80.4	1,957	69.7	31	-2.0
South West	2,542	74.1	1,365	79.7	1,177	68.6	47	-1.4
England	24,526	70.7	13,233	76.3	11,293	65.2	183	-1.9
Wales	1,335	67.6	712	72.4	623	62.8	30	-1.3
Scotland	2,488	71.1	1,276	74.0	1,212	68.3	-4	-2.4
Northern Ireland	773	65.7	412	70.3	361	61.2	8	-1.6
Great Britain	28,348	70.6	15,220	75.9	13,128	65.4	208	-1.9
United Kingdom	29,121	70.5	15,633	75.7	13,489	65.3	216	-1.9

Source: Labour Force Survey

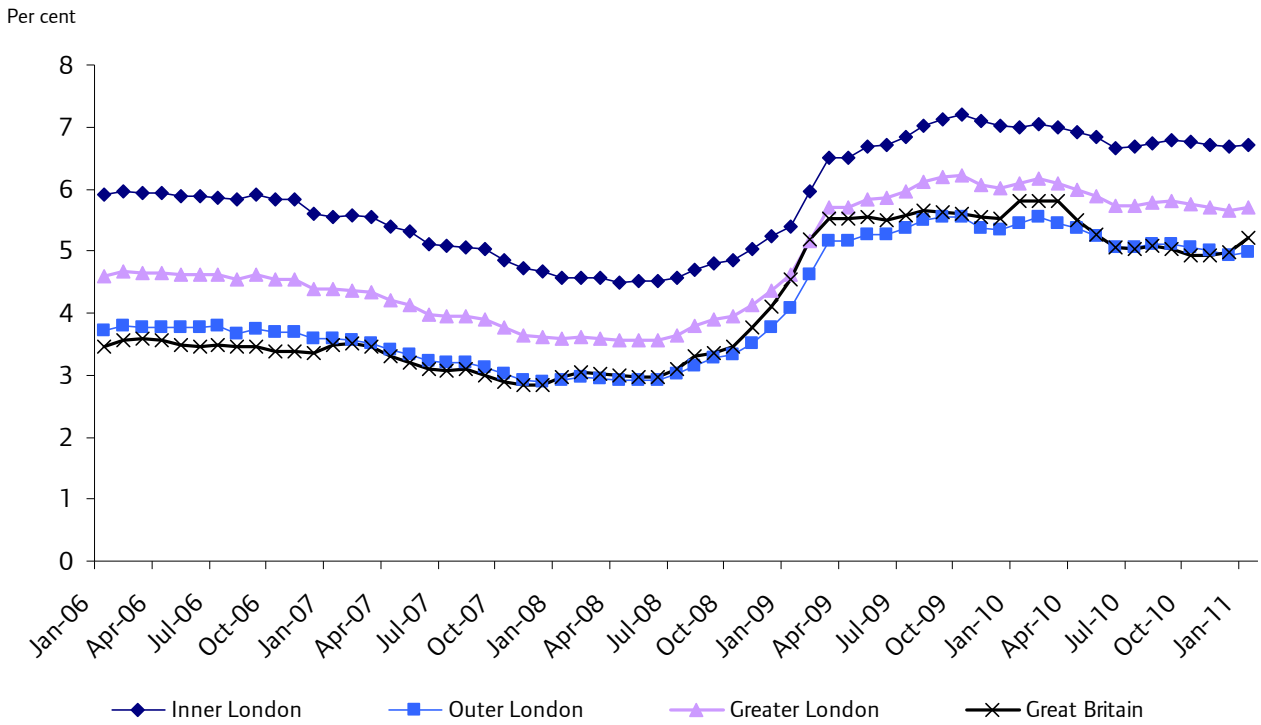
Notes: Employment levels are quoted for all people aged 16 and over. Employment rates are calculated as a percentage of the working-age population. Change rates are calculated as a percentage of the working-age population.

While the ILO unemployment measure is seen as a better indicator of overall levels of unemployment in the population, the claimant count can be used to provide a more complete picture. Claimant count is a more timely data source, is a full count from administrative systems (as opposed to a sample survey) and provides more detail for smaller areas. The main limitation of claimant count data is that it does not include all unemployed people as the eligibility criteria mean that not all unemployed people can claim Job Seekers Allowance. Particularly worth noting in the context of a recession, when using the claimant count as an indicator, is the criterion that some people are not able to claim for more than six months, so after this time will cease to be included in the claimant count. (See the background section for more detail).

The JSA claimant count stood at 213,880 for London in January 2011, of which 48 per cent was in Inner London, compared with around 41 per cent of the economically active population. The GLA claimant rates (the claimant count as a percentage of the resident economically active population using GLA population estimates) show a rate of 5.7 per cent for London compared with a national figure of 5.2 per cent. The Inner London claimant count rate is clearly higher at 6.7 per cent, while the Outer London rate is below the national average at 5.0 per cent.

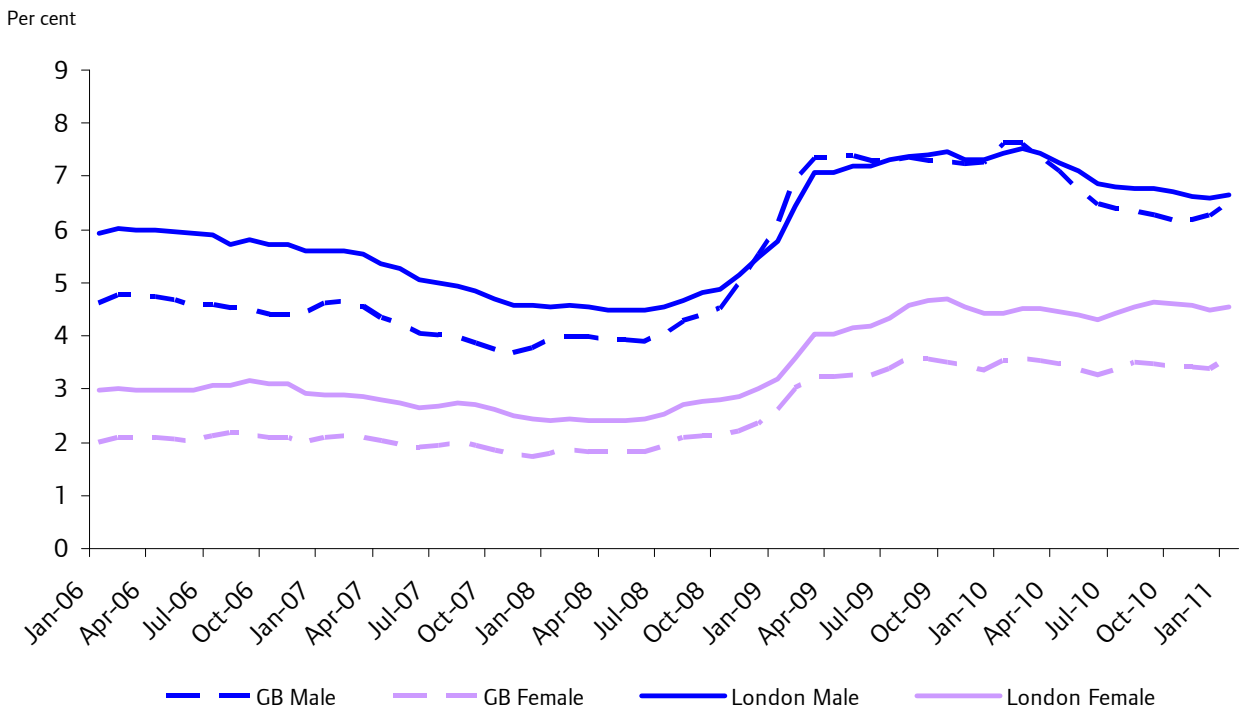
The claimant count figures for the period January 2006 to January 2011 are presented in Charts 2 to 3. The figures are presented in Table 4. Chart 2 shows that between January 2006 and July 2008 claimant count rates were falling overall, despite some fluctuations in both London and Great Britain. Between July 2008 and March 2009 rates increased by 2.1 percentage points in London and 2.4 in Great Britain. Although rates continued to rise overall, the rate of increase slowed with London's claimant count rising by 0.5 percentage points and Great Britain's by 0.3 to January 2010. Between January 2010 and January 2011, rates fell in both London and Great Britain to 5.7 and 5.2 per cent respectively. The rate of decrease between January 2010 and January 2011 was consistent in both Inner and Outer London at around 0.4 percentage points.

**Chart 2: Claimant count rates for all people, January 2006-2011.**



Source: Office for National Statistics (Jobcentre Plus administrative system) & GLA estimates

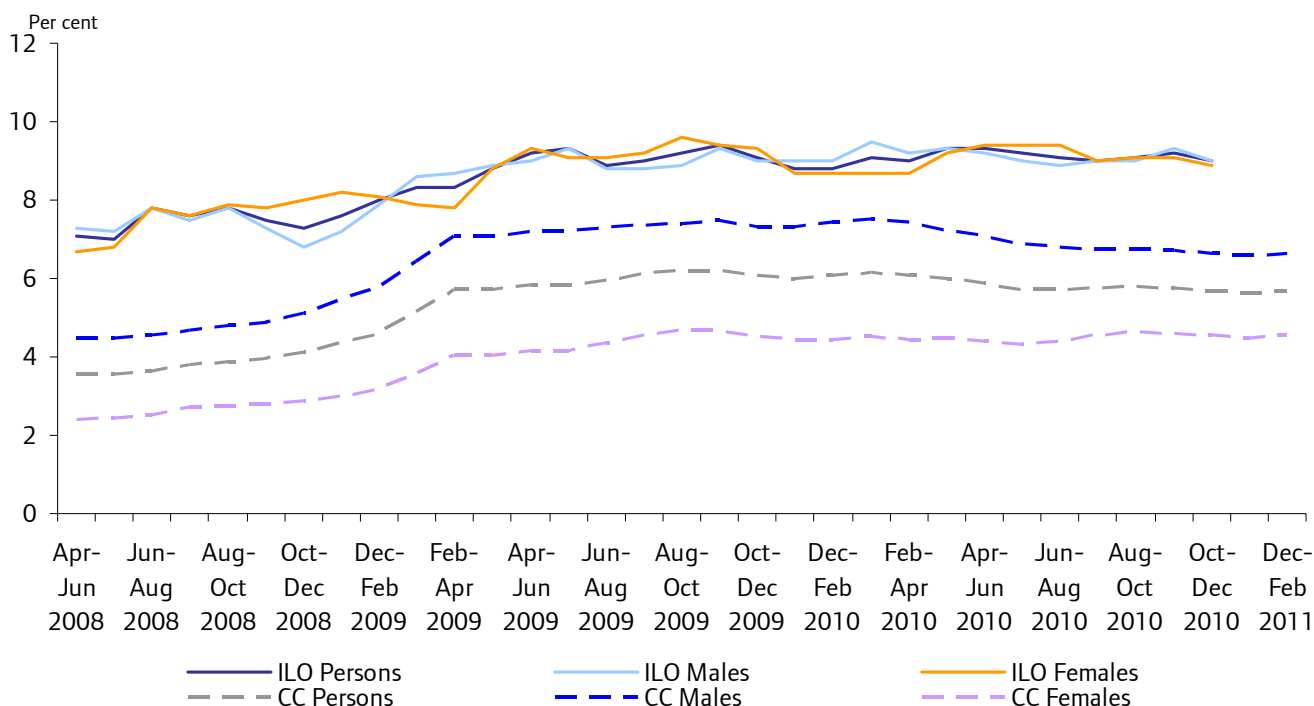
**Chart 3: Claimant count rates for men and women in London and Great Britain, January 2006 to January 2011**



Source: Office for National Statistics (Jobcentre Plus administrative system) & GLA estimates

Chart 3 illustrates rates for men and women over the same period, showing the much higher claimant count rates and the sharper rise seen particularly between November 2008 and March 2009 among men, and the relative stability of rates for women. The national rate for men climbed more steeply to rise above that for men in London in February 2009. In January 2010 the claimant count rate for males in Great Britain was 7.4 per cent compared to 7.2 per cent for London. From April 2010 onwards the claimant count rate for males in Great Britain has been lower than that for London. Rates currently stand at 6.7 per cent in London compared with 6.5 per cent in Great Britain. In contrast, the difference between claimant count rates among women in Great Britain and London has remained relatively stable, with women in London consistently having a higher rate than those in Great Britain.

**Chart 4: Unemployment trends in London, May 2008 to Jan 2011**



Source: Claimant count – Office for National Statistics (Jobcentre Plus administrative system) & GLA estimates  
ILO Unemployment – Labour Force Survey, Office for National Statistics

Chart 4 illustrates the trends since the middle of 2008 in both the ILO measure and GLA claimant count rates. The ILO measure is on a rolling three-month basis and as it is a survey based estimate shows a degree of volatility, whereas the claimant count rate is taken at a single date in each month. It clearly shows that they follow similar trends, although the claimant count has risen to a greater proportion of the ILO measure.

Table 4 shows the claimant count rates for Inner, Outer and Greater London as illustrated in Chart 2 and for Great Britain using the same method of calculation. Table 5, gives levels and rates for males and females and presents claimant count rates by age, showing how rates for young adults (16-24) began to fall in the first half of 2010 before increasing again later in the year<sup>3</sup>.

Table 6 gives the comparable figures for each London borough showing the overall rates for each month in the last year. Hackney (9.8 per cent), Newham (9.3 per cent) and Tower Hamlets (8.8 per cent) have the highest rates. Richmond and Kingston recorded the lowest rates in January 2011 at 2.2 and 2.5 per cent respectively. All London boroughs saw a decrease in rates on the previous year. Hillingdon and Islington saw the largest falls at 1.5 and 1.2 percentage points respectively.

<sup>3</sup> The large decrease in rates seen between Dec 2010 and January 2011 for those aged 16-24 and residing in Inner London is due to a change in population base rather than a fall in numbers claiming Job Seekers Allowance. The 2011 population base uses updated modelling techniques which better account for the numbers of those aged 21-24 who are resident in London after leaving university, thus increasing the number of those aged 16-24 who are economically active and thereby decreasing the rate.

**Table 4: Claimant count rates by gender, annually September 2004-2009, monthly October 2009 to Jan 2011**

	Sep-04	Sep-05	Sep-06	Sep-07	Sep-08	Sep-09										
Persons																
Inner London	6.1	6.0	5.9	5.0	4.8	7.1										
Outer London	3.5	3.7	3.8	3.1	3.3	5.5										
Greater London	4.5	4.6	4.6	3.9	3.9	6.2										
Great Britain	3.0	3.2	3.4	3.0	3.4	5.6										
Males																
Inner London	7.9	7.6	7.5	6.4	6.0	8.6										
Outer London	4.4	4.6	4.7	3.8	4.0	6.6										
Greater London	5.8	5.8	5.8	4.8	4.8	7.4										
Great Britain	4.0	4.2	4.5	3.8	4.4	7.3										
Females																
Inner London	3.9	4.0	3.9	3.4	3.3	5.3										
Outer London	2.4	2.6	2.6	2.3	2.4	4.3										
Greater London	3.0	3.1	3.2	2.7	2.8	4.7										
Great Britain	1.8	2.0	2.1	1.9	2.1	3.5										
	Oct-09	Nov-09	Dec-09	Jan-10	Feb-10	Mar-10	Apr-10	May-10	Jun-10	Jul-10	Aug-10	Sep-10	Oct-10	Nov-10	Dec-10	Jan-11
Persons																
Inner London	7.2	7.1	7.0	7.0	7.1	7.0	6.9	6.8	6.7	6.7	6.7	6.8	6.7	6.7	6.7	6.7
Outer London	5.5	5.4	5.3	5.4	5.6	5.4	5.4	5.2	5.1	5.1	5.1	5.1	5.1	5.0	4.9	5.0
Greater London	6.2	6.1	6.0	6.1	6.2	6.1	6.0	5.9	5.7	5.7	5.8	5.8	5.8	5.7	5.6	5.7
Great Britain	5.6	5.5	5.5	5.8	5.8	5.8	5.5	5.3	5.0	5.0	5.1	5.0	4.9	4.9	5.0	5.2
Males																
Inner London	8.7	8.6	8.6	8.6	8.7	8.6	8.4	8.3	8.1	8.0	8.0	8.0	8.0	7.9	7.9	7.9
Outer London	6.6	6.4	6.4	6.6	6.7	6.6	6.4	6.3	6.0	5.9	5.9	5.9	5.9	5.8	5.7	5.8
Greater London	7.5	7.3	7.3	7.4	7.5	7.4	7.2	7.1	6.9	6.8	6.8	6.8	6.7	6.6	6.6	6.7
Great Britain	7.2	7.2	7.3	7.6	7.6	7.6	7.1	6.8	6.5	6.4	6.3	6.3	6.2	6.2	6.3	6.5
Females																
Inner London	5.3	5.2	5.1	5.0	5.1	5.1	5.1	5.0	4.9	5.0	5.2	5.3	5.3	5.3	5.2	5.3
Outer London	4.3	4.1	4.0	4.0	4.1	4.1	4.1	4.0	3.9	4.0	4.1	4.2	4.1	4.1	4.0	4.0
Greater London	4.7	4.5	4.4	4.4	4.5	4.4	4.5	4.4	4.3	4.4	4.6	4.6	4.6	4.6	4.5	4.6
Great Britain	3.5	3.4	3.4	3.5	3.6	3.5	3.5	3.3	3.3	3.3	3.5	3.5	3.4	3.4	3.4	3.6

Source: Claimant count – Office for National Statistics (Jobcentre Plus administrative system) & GLA estimates

**Table 5: Claimant count and rates by age and gender, Jan 2010 to Jan 2011**

	Claimant count rate (%)														
	Claimant count numbers			by sex			by age (all)			by age (males)			by age (females)		
	Persons	Males	Females	Persons	Males	Females	16-24	25-44	45-59/64	16-24	25-44	45-59/64	16-24	25-44	45-59/64
<b>Inner London</b>															
Jan-10 (2010 base)	105,790	71,340	34,445	7.0	8.6	5.0	18.6	5.3	7.5	23.9	6.8	8.6	13.4	3.5	6.0
Feb-10	106,700	71,870	34,820	7.1	8.7	5.1	18.8	5.3	7.5	24.2	6.8	8.7	13.5	3.5	6.0
Mar-10	105,930	71,025	34,915	7.0	8.6	5.1	18.3	5.3	7.5	23.6	6.8	8.6	13.1	3.6	6.1
Apr-10	104,475	69,770	34,710	6.9	8.4	5.1	17.4	5.3	7.6	22.3	6.7	8.6	12.6	3.6	6.2
May-10	103,450	68,975	34,465	6.8	8.3	5.0	16.9	5.3	7.5	21.7	6.6	8.6	12.1	3.6	6.2
Jun-10	100,825	67,190	33,645	6.7	8.1	4.9	16.1	5.1	7.5	20.6	6.5	8.5	11.6	3.5	6.2
Jul-10	100,975	66,545	34,425	6.7	8.0	5.0	16.5	5.1	7.5	20.8	6.3	8.5	12.3	3.5	6.3
Aug-10	101,980	66,240	35,750	6.7	8.0	5.2	17.1	5.1	7.6	21.2	6.3	8.4	13.1	3.6	6.6
Sep-10	102,875	66,415	36,450	6.8	8.0	5.3	17.7	5.1	7.6	21.8	6.2	8.4	13.6	3.7	6.6
Oct-10	102,125	65,835	36,290	6.7	8.0	5.3	17.4	5.0	7.6	21.4	6.2	8.4	13.3	3.7	6.6
Nov-10	101,435	65,160	36,270	6.7	7.9	5.3	16.9	5.0	7.6	20.9	6.1	8.3	13.0	3.7	6.7
Dec-10	101,020	65,130	35,890	6.7	7.9	5.2	16.4	5.0	7.7	20.5	6.1	8.5	12.3	3.7	6.7
Jan-11 (2011 base)	103,475	66,335	37,135	6.7	7.9	5.3	12.5	5.3	7.8	15.8	6.4	8.5	9.3	3.9	6.9
<b>Outer London</b>															
Jan-10 (2010 base)	119,470	79,870	39,595	5.4	6.6	4.0	13.5	4.7	4.3	16.1	6.0	4.9	10.4	3.2	3.5
Feb-10	121,765	81,290	40,470	5.6	6.7	4.1	13.9	4.8	4.3	16.6	6.1	4.9	10.7	3.2	3.5
Mar-10	120,690	80,110	40,580	5.5	6.6	4.1	13.6	4.8	4.3	16.3	6.0	4.9	10.6	3.3	3.5
Apr-10	117,535	77,645	39,915	5.4	6.4	4.1	12.7	4.7	4.3	15.1	5.9	4.8	9.9	3.3	3.5
May-10	114,675	75,485	39,190	5.2	6.3	4.0	12.0	4.6	4.2	14.3	5.7	4.7	9.2	3.2	3.6
Jun-10	111,020	72,710	38,305	5.1	6.0	3.9	11.4	4.5	4.1	13.6	5.6	4.6	8.9	3.2	3.5
Jul-10	111,025	71,795	39,240	5.1	5.9	4.0	12.0	4.4	4.1	14.0	5.4	4.5	9.7	3.2	3.5
Aug-10	111,890	71,455	40,415	5.1	5.9	4.1	12.7	4.4	4.0	14.7	5.3	4.4	10.4	3.2	3.6
Sep-10	112,210	71,230	40,975	5.1	5.9	4.2	13.1	4.3	4.0	15.0	5.2	4.3	10.8	3.3	3.6
Oct-10	111,185	70,720	40,450	5.1	5.9	4.1	12.8	4.3	4.0	14.7	5.2	4.4	10.6	3.2	3.6
Nov-10	109,760	69,665	40,100	5.0	5.8	4.1	12.3	4.3	4.0	14.2	5.1	4.4	10.0	3.3	3.6
Dec-10	108,165	68,995	39,170	4.9	5.7	4.0	11.6	4.3	4.0	13.7	5.1	4.4	9.3	3.3	3.5
Jan-11 (2011 base)	110,405	69,925	40,465	5.0	5.8	4.0	10.2	4.5	4.1	12.2	5.3	4.4	8.0	3.5	3.6
<b>Greater London</b>															
Jan-10 (2010 base)	225,260	151,210	74,040	6.1	7.4	4.4	15.4	5.0	5.3	18.9	6.4	6.1	11.6	3.3	4.3
Feb-10	228,465	153,160	75,290	6.2	7.5	4.5	15.8	5.0	5.3	19.4	6.4	6.1	11.9	3.4	4.3
Mar-10	226,620	151,135	75,495	6.1	7.4	4.5	15.4	5.0	5.3	18.9	6.4	6.1	11.6	3.4	4.4
Apr-10	222,010	147,415	74,625	6.0	7.2	4.5	14.5	5.0	5.3	17.7	6.3	6.1	10.9	3.4	4.4
May-10	218,125	144,460	73,655	5.9	7.1	4.4	13.8	4.9	5.3	17.0	6.2	6.0	10.4	3.4	4.4
Jun-10	211,845	139,900	71,950	5.7	6.9	4.3	13.2	4.8	5.2	16.1	6.0	5.9	9.9	3.3	4.4
Jul-10	212,000	138,340	73,665	5.7	6.8	4.4	13.7	4.7	5.2	16.4	5.8	5.8	10.7	3.3	4.4
Aug-10	213,870	137,695	76,165	5.8	6.8	4.6	14.4	4.7	5.2	17.0	5.7	5.7	11.5	3.4	4.5
Sep-10	215,085	137,645	77,425	5.8	6.8	4.6	14.8	4.7	5.2	17.5	5.7	5.7	11.9	3.4	4.6
Oct-10	213,310	136,555	76,740	5.8	6.7	4.6	14.5	4.6	5.2	17.1	5.6	5.7	11.7	3.4	4.6
Nov-10	211,195	134,825	76,370	5.7	6.6	4.6	14.0	4.6	5.2	16.6	5.6	5.7	11.2	3.5	4.6
Dec-10	209,185	134,125	75,060	5.6	6.6	4.5	13.4	4.6	5.2	16.1	5.6	5.7	10.5	3.5	4.6
Jan-11 (2011 base)	213,880	136,260	77,600	5.7	6.7	4.6	11.2	4.8	5.3	13.6	5.8	5.8	8.6	3.7	4.7
<b>Great Britain</b>															
Jan-10 (2010 base)	1,447,465	1,056,340	391,120	5.8	7.5	3.5	12.8	5.2	3.9	16.0	7.5	4.9	8.8	2.7	2.7
Feb-10	1,593,895	1,161,880	432,015	5.8	7.6	3.6	13.1	5.3	3.9	16.3	7.4	4.8	9.0	2.7	2.7
Mar-10	1,551,750	1,125,655	426,095	5.7	7.4	3.5	12.6	5.2	3.8	15.6	7.2	4.7	8.7	2.7	2.7
Apr-10	1,506,125	1,086,570	419,555	5.5	7.1	3.5	11.8	5.1	3.8	14.7	7.0	4.6	8.2	2.8	2.7
May-10	1,441,580	1,035,590	405,990	5.3	6.8	3.3	11.0	4.9	3.6	13.7	6.8	4.4	7.7	2.7	2.6
Jun-10	1,383,950	989,380	394,570	5.0	6.5	3.3	10.5	4.7	3.5	12.8	6.5	4.2	7.4	2.7	2.6
Jul-10	1,379,390	973,190	406,200	5.0	6.4	3.3	10.7	4.7	3.4	12.9	6.4	4.1	8.0	2.7	2.5
Aug-10	1,392,515	970,090	422,430	5.1	6.3	3.5	11.1	4.7	3.4	13.2	6.3	4.0	8.4	2.8	2.6
Sep-10	1,376,735	955,760	420,975	5.0	6.3	3.5	11.1	4.6	3.4	13.2	6.1	4.0	8.4	2.8	2.6
Oct-10	1,354,650	941,980	412,670	4.9	6.2	3.4	10.8	4.5	3.4	12.9	6.0	3.9	8.2	2.7	2.6
Nov-10	1,351,585	940,725	410,860	4.9	6.2	3.4	10.6	4.6	3.4	12.8	6.0	4.0	7.9	2.8	2.6
Dec-10	1,363,690	955,900	407,790	5.0	6.3	3.4	10.5	4.6	3.4	12.8	6.2	4.1	7.6	2.8	2.6
Jan-11 (2011 base)	1,439,890	1,002,270	437,615	5.2	6.5	3.6	11.1	4.9	3.6	13.5	6.5	4.2	8.0	3.0	2.7

Source: Claimant count – Office for National Statistics (Jobcentre Plus administrative system) & GLA estimates

**Table 6: Claimant rates, London boroughs, January 2010 to January 2011**

	Jan-10	Feb-10	Mar-10	Apr-10	May-10	Jun-10	Jul-10	Aug-10	Sep-10	Oct-10	Nov-10	Dec-10	Jan-11
City of London	2.9	2.8	2.7	2.7	2.6	2.4	2.2	2.2	2.3	2.2	2.2	2.3	2.4
Barking & Dagenham	8.7	9.1	9.3	9.0	9.1	8.6	8.7	8.6	8.6	8.6	8.6	8.5	8.5
Barnet	4.6	4.8	4.7	4.5	4.4	4.3	4.4	4.3	4.4	4.3	4.1	4.1	4.2
Bexley	4.6	4.8	4.7	4.6	4.4	4.2	4.2	4.2	4.3	4.1	4.0	4.0	4.1
Brent	7.3	7.6	7.5	7.4	7.3	7.1	7.1	7.1	7.1	7.0	6.9	6.8	7.2
Bromley	4.1	4.1	4.0	3.8	3.7	3.5	3.5	3.6	3.6	3.6	3.6	3.6	3.6
Camden	6.0	5.9	5.9	5.8	5.6	5.5	5.6	5.5	5.5	5.5	5.3	5.2	5.4
Croydon	5.9	6.0	5.9	5.9	5.8	5.6	5.7	5.8	5.8	5.8	5.7	5.7	5.7
Ealing	6.2	6.2	6.2	6.1	5.8	5.6	5.6	5.8	5.8	5.7	5.6	5.4	5.6
Enfield	7.2	7.4	7.5	7.4	7.2	7.0	7.0	7.1	7.1	7.1	7.0	7.0	7.0
Greenwich	6.7	6.8	6.8	6.7	6.5	6.5	6.6	6.7	6.8	6.8	6.6	6.6	6.8
Hackney	9.9	10.0	9.8	9.6	9.6	9.4	9.4	9.8	9.9	9.9	10.0	9.9	9.8
Hammersmith & Fulham	5.5	5.3	5.4	5.3	5.1	5.0	5.0	5.0	5.2	5.2	5.2	5.2	5.3
Haringey	8.6	8.8	8.9	8.8	8.6	8.5	8.5	8.6	8.8	8.7	8.7	8.7	8.7
Harrow	4.3	4.3	4.3	4.1	4.0	3.9	3.9	3.9	3.8	3.8	3.8	3.7	3.7
Havering	4.8	4.9	4.9	4.8	4.7	4.5	4.4	4.4	4.4	4.5	4.4	4.3	4.4
Hillingdon	5.3	5.4	5.3	5.0	4.9	4.6	4.6	4.5	4.5	4.4	4.2	4.1	3.9
Hounslow	4.9	4.9	4.9	4.9	4.6	4.4	4.3	4.4	4.4	4.4	4.4	4.3	4.3
Islington	7.9	7.8	7.6	7.6	7.4	7.2	7.1	7.1	7.2	7.0	7.0	6.8	6.6
Kensington & Chelsea	4.2	4.1	4.2	4.2	4.0	3.9	3.9	4.0	4.1	4.1	4.0	4.1	4.3
Kingston upon Thames	3.2	3.2	3.0	2.9	2.8	2.6	2.6	2.6	2.6	2.6	2.6	2.4	2.5
Lambeth	7.6	7.7	7.7	7.5	7.5	7.1	7.2	7.1	7.1	7.0	7.0	7.0	6.9
Lewisham	7.0	7.0	7.0	6.9	6.9	6.7	6.8	7.1	7.1	7.1	7.0	7.0	6.9
Merton	4.0	4.1	4.0	3.8	3.7	3.5	3.5	3.7	3.7	3.6	3.5	3.4	3.5
Newham	8.8	9.0	8.9	8.8	8.8	8.8	8.8	8.8	8.9	8.9	8.8	8.8	9.3
Redbridge	5.9	6.1	6.1	5.9	5.9	5.7	5.7	5.6	5.6	5.6	5.6	5.5	5.5
Richmond upon Thames	2.6	2.7	2.6	2.4	2.4	2.2	2.2	2.3	2.3	2.2	2.2	2.2	2.2
Southwark	7.4	7.6	7.6	7.5	7.5	7.3	7.3	7.4	7.5	7.4	7.4	7.4	7.3
Sutton	4.0	4.1	3.9	3.7	3.7	3.5	3.5	3.5	3.5	3.5	3.5	3.4	3.4
Tower Hamlets	9.6	9.7	9.6	9.4	9.5	9.3	9.3	9.5	9.5	9.3	9.2	9.2	8.8
Waltham Forest	8.4	8.7	8.7	8.4	8.3	8.1	8.2	8.2	8.2	8.1	8.2	8.1	8.2
Wandsworth	4.2	4.2	4.2	4.1	4.0	3.9	3.8	3.8	3.7	3.7	3.7	3.7	3.7
Westminster	4.8	4.7	4.7	4.7	4.6	4.5	4.5	4.5	4.6	4.5	4.5	4.4	4.7
Inner London	7.0	7.1	7.0	6.9	6.8	6.7	6.7	6.7	6.8	6.7	6.7	6.7	6.7
Outer London	5.4	5.6	5.5	5.4	5.2	5.1	5.1	5.1	5.1	5.1	5.0	4.9	5.0
Greater London	6.1	6.2	6.1	6.0	5.9	5.7	5.7	5.8	5.8	5.8	5.7	5.6	5.7
Great Britain	5.8	5.8	5.7	5.5	5.3	5.0	5.0	5.1	5.0	4.9	4.9	5.0	5.2

Source: Claimant count – Office for National Statistics (Jobcentre Plus administrative system) & GLA estimates

## Background

As the claimant count is a by-product of the benefits administration system, it only counts those unemployed people who are claiming JSA. GLA analysis has highlighted that some unemployed people are more likely to be missed by the claimant count than others; these include women, young people and those living in higher income households. This largely reflects the eligibility criteria for JSA. For this reason, the claimant count is best viewed as an unemployment indicator not a comprehensive unemployment measure.

The Government's official and preferred measure of unemployment is currently ILO unemployment. ILO unemployment measures those people out of work, who are actively looking for work and are available to start work. At a regional level, ILO unemployment is measured by the Annual Population Survey or the Labour Force Survey. The ILO measure is more comprehensive than the claimant count as it includes the many unemployed people who are not eligible for, or not claiming, JSA. It is the ILO measure that is generally quoted in the media.

Despite its limitations, the claimant count is widely used because it is timely (data are available monthly around 4/5 weeks after the date of the count) and importantly, because it is available for small areas. ILO unemployment estimates are not available for wards and even the borough level ILO estimates (modelled and survey based) have high confidence intervals and cannot be generated by age or gender with any degree of reliability. Even at regional level, there is a degree of uncertainty in the figures, so small changes may reflect variations in the sample rather than in the underlying population.

The modelled unemployment estimates produced by the Office for National Statistics for local authorities (and now also available on a consistent basis for Parliamentary Constituencies) are based on determining a strong relationship between ILO unemployment (as measured by the Labour Force Survey) and auxiliary information (mainly the Claimant Count). This relationship is then used to provide more reliable estimates of ILO unemployment for local authorities. These model-based estimates are always more precise than any direct estimates produced at this level of geography from the Labour Force Survey/Annual Population Survey.

Further information about the claimant count measure and how it compares to the official ILO measure can be found in: *Intelligence Briefing 2011-02 Claimant Count Model 2011: Technical Note*

For more information please contact Richard Walker, Intelligence Unit,  
Greater London Authority, City Hall, The Queen's Walk, London SE1 2AA  
Tel: 020 7983 4699 e-mail: [richard.walker@london.gov.uk](mailto:richard.walker@london.gov.uk)

Data produced in this briefing have been reproduced with the permission of the Controller of Her Majesty's Stationery Office and are © Crown Copyright.