

2010 Mid-Year Population Estimates

Key features:

- The resident population of Greater London as at 30th June 2010 was estimated to be 7.83 million, an increase of 71.6 thousand from the previous year.
- Whereas in 2008-09 London was ranked first out of the nine regions with regards to growth rate, this year (2009-10) it ranked third highest of all English regions (behind the East and South East regions), with a growth rate of 0.9 per cent.
- This population growth was driven mainly by natural change (excess of births over deaths) which added 82,800 to London's population. London contributed 37.2 per cent to the natural change in England, while accounting for only 15.0 per cent of the total population.
- The largest percentage borough increases in London were:
 - Barking & Dagenham (2.4 per cent)
 - Camden (1.8 per cent)
 - City of London (1.7 per cent)
 - Hackney (1.5 per cent)
- Four boroughs were estimated to have had population declines:
 - Newham (-0.5 per cent)
 - Haringey (-0.2 per cent)
 - Kensington & Chelsea (-0.7 per cent)
 - Hammersmith and Fulham (-0.01 per cent)
- Births (2008-09) were 130,800, an increase of 3,100 compared with the previous year.
- Deaths (2008-09) were 48,000, a decrease of 1,300 compared with the previous year.
- In 2008-09 net migration together with other changes resulted in a net loss of 11,200 people. This compares with a gain of over 6,800 in 2008-09. However this relatively small balancing change disguises the considerable population turnover that takes place in London.
- The net outflow from London to the rest of the UK, at 42.5 thousand, was the first indication of the reversal of a trend that had up till now been a steady decline in net internal outflows
- Net international migration to London, at 31.4 thousand, was at its lowest level since mid-1995.

Background

On 30th June 2011 the Office for National Statistics (ONS) issued mid-2010 population estimates for all local authorities in England and Wales. This *Update* analyses the resident population estimates for Greater London and the London boroughs, both separately as well as within the national context.

Mid-year estimates relate to the usually resident population. These estimates include long-term international migrants (people expressing an intention to stay in the UK for at least a year). They do not include short-term migrants; people who intend to stay or leave the UK for less than a year.

Estimates build on the mid-2001 estimates and are available for constituent administrative areas (Government Office Regions, counties, local authority district and strategic health authority areas in England).

These estimates will not necessarily be consistent with the ONS 2008-based subnational population projections that were released on 27th May 2010 and which are based on the revised mid-2008 population estimates released by ONS on 13th May 2010. It would normally be expected that the current estimates would form the base of the next (2010-based) ONS subnational projections, however ONS has indicated that it plans to revise estimates for 2006 to 2010 in Autumn 2011 using a revised international migration allocation method. The revised 2010 estimate would then be the base of the next subnational projections if they are to be prepared. That decision is to be made soon.

Data Availability

The main data relating to population estimates by age and gender and the annual change analyses are available to download from the ONS website at:

<http://www.statistics.gov.uk/statbase/Product.asp?vlnk=601&More=N>

Results for London

ONS mid-2010 population estimates for London give a total resident population of 7.83 million, an increase of 71,600 on the previous year. This represents an annual growth rate of 0.9 per cent. London had the third largest growth in population out of all Government Office Regions (GORs) between mid-2009 and mid-2010.

Table 1: Mid-year population estimates and population change, UK countries and GORs

	Population			2009-10 change		2001-09 change	
	2001	2009	2010	Number	Percentage	Number	Percentage
United Kingdom	59,113.5	61,792.0	62,262.0	470.0	0.8	3,148.5	5.3
Great Britain	57,424.2	60,003.1	60,462.6	459.5	0.8	3,038.4	5.3
England & Wales	52,360.0	54,809.1	55,240.5	431.4	0.8	2,880.5	5.5
Wales	2,910.2	2,999.3	3,006.4	7.1	0.2	96.2	3.3
Scotland	5,064.2	5,194.0	5,222.1	28.1	0.5	157.9	3.1
Northern Ireland	1,689.3	1,788.9	1,799.4	10.5	0.6	110.1	6.5
England	49,449.7	51,809.7	52,234.0	424.3	0.8	2,784.3	5.6
North East	2,540.1	2,584.3	2,606.6	22.3	0.9	66.5	2.6
North West	6,773.0	6,897.9	6,935.7	37.8	0.5	162.7	2.4
Yorkshire and the Humber	4,976.6	5,258.1	5,301.3	43.2	0.8	324.7	6.5
East Midlands	4,189.6	4,451.2	4,481.4	30.2	0.7	291.8	7.0
West Midlands	5,280.7	5,431.1	5,455.2	24.1	0.4	174.5	3.3
East of England	5,400.5	5,766.6	5,831.8	65.2	1.1	431.3	8.0
London	7,322.4	7,753.6	7,825.2	71.6	0.9	502.8	6.9
South East	8,023.4	8,435.7	8,523.1	87.4	1.0	499.7	6.2
South West	4,943.4	5,231.2	5,273.7	42.5	0.8	330.3	6.7

The population increase of 71,600 is composed of a number of key components: births, deaths, migration (both UK and international inflows and outflows) and 'other changes'.

There were 130,800 births in 2009-10, an increase of 3,100 births compared with the previous year. Deaths declined by 1,300 to 48,000. Consequently natural change (the excess of births over deaths) for 2009-10 was 82,800, an increase of just under 4,300 compared with the previous year.

Table 2: Components of Change, UK Countries and GORs, 2009-10

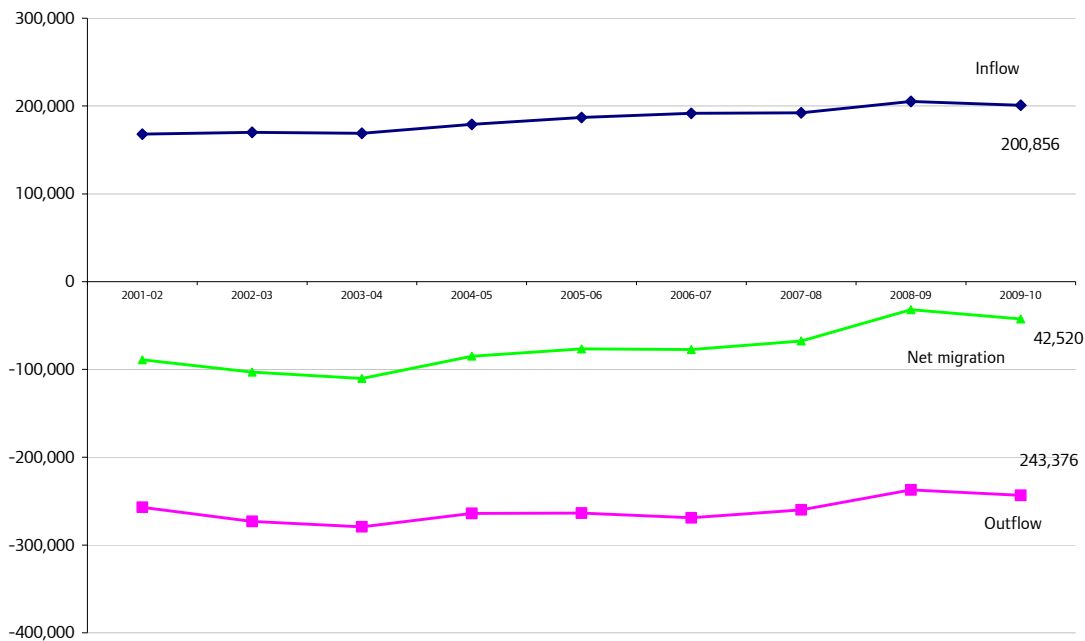
	Mid-2009 population	Live births	Deaths	Natural change	Net migration & other changes	Total change	Mid-2010 population
United Kingdom	61,792.0	796.8	553.7	243.2	226.9	470.0	62,262.0
England & Wales	54,809.1	712.9	485.7	227.2	204.2	431.4	55,240.5
Greater London	7,753.6	130.8	48.0	82.8	-11.2	71.6	7,825.2
Inner London	3,061.1	54.1	15.7	38.4	-16.2	22.1	3,083.3
Camden	231.2	3.1	1.1	2.0	2.2	4.1	235.4
City of London	11.5	0.1	0.0	0.0	0.2	0.2	11.7
Hackney	216.0	4.6	1.1	3.5	-0.3	3.2	219.2
Hammersmith & Fulham	169.7	2.8	0.9	2.0	-2.0	0.0	169.7
Haringey	225.5	4.4	1.2	3.2	-3.7	-0.5	225.0
Islington	191.8	3.0	1.1	1.9	0.3	2.3	194.1
Kensington & Chelsea	169.9	2.3	0.8	1.5	-1.8	-0.4	169.5
Lambeth	283.3	4.9	1.4	3.5	-2.3	1.2	284.5
Lewisham	264.5	5.0	1.6	3.4	-1.4	2.0	266.5
Newham	241.2	6.1	1.3	4.8	-5.9	-1.1	240.1
Southwark	285.6	4.9	1.4	3.5	-2.1	1.4	287.0
Tower Hamlets	234.8	4.5	1.0	3.5	-0.3	3.1	237.9
Wandsworth	286.6	5.4	1.6	3.8	-0.8	3.0	289.6
Westminster	249.4	3.0	1.1	1.9	1.8	3.7	253.1
Outer London	4,692.4	76.8	32.3	44.4	5.0	49.5	4,741.9
Barking & Dagenham	175.6	3.6	1.3	2.3	1.8	4.1	179.7
Barnet	343.1	5.3	2.4	2.9	2.2	5.1	348.2
Bexley	225.9	3.0	1.8	1.2	0.8	2.1	228.0
Brent	255.5	5.1	1.5	3.5	-2.4	1.1	256.6
Bromley	310.2	4.1	2.6	1.6	0.6	2.2	312.4
Croydon	342.8	5.3	2.4	2.9	-0.2	2.7	345.6
Ealing	316.6	5.7	1.9	3.8	-1.9	1.9	318.5
Enfield	291.2	5.0	2.0	2.9	0.8	3.7	294.9
Greenwich	226.1	4.5	1.7	2.9	-0.5	2.4	228.5
Harrow	228.1	3.3	1.4	1.9	0.0	1.9	230.1
Havering	234.1	2.7	2.2	0.6	1.4	2.0	236.1
Hillingdon	262.5	4.2	1.7	2.4	1.2	3.6	266.1
Hounslow	234.2	4.4	1.4	3.0	-0.4	2.5	236.8
Kingston upon Thames	166.7	2.3	1.0	1.3	1.0	2.2	169.0
Merton	206.4	3.5	1.2	2.3	0.1	2.4	208.8
Redbridge	267.7	4.3	1.8	2.6	0.2	2.8	270.5
Richmond upon Thames	189.0	3.0	1.2	1.8	0.1	2.0	190.9
Sutton	192.2	2.7	1.4	1.3	0.7	2.0	194.2
Waltham Forest	224.3	4.6	1.4	3.2	-0.4	2.8	227.1

Total net migration and other changes combined for the year is estimated to be a loss of 11,200 compared to a gain of 6,800 in the previous year. Since 2001 the gain last year (6,800) was the only year that London has gained population through net migration.

Figure 1 shows the decrease is a result of both a slightly increased outflow from London to the rest of the UK as well as a decreased inflow to London from the rest of the UK. The net loss of 42.5 thousand in 2009-10 marks the first reversal of what has been up until now a steadily declining trend in net outflow since mid-1985.

This reversing trend was combination of increased outflow and a reduction in the inflow. The outflow has fallen from 269 thousand in 2006-07 to 243 thousand in 2009-10.

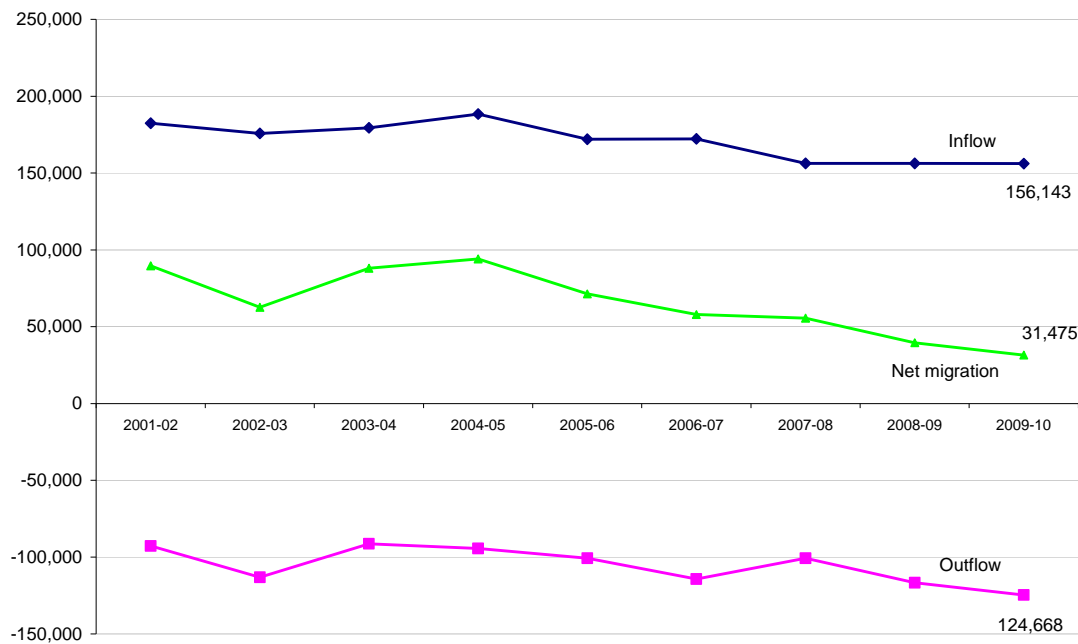
Figure 1: Internal (UK) migration flows, 2001-02 to 2009-10, Greater London



Inflow and outflow data not available for 2001-02 and have in this case been estimated by the GLA

Figure 2 shows that between in 2009-10 there was an increased outflow from London to overseas, compared with 2008-09, of 8 thousand resulting in a decrease in the net international migration to London to 31.4 thousand, the lowest level since mid-1995.

Figure 2: International migration flows, Greater London, 2001-02 to 2009-10



Since 2001 London's population is estimated to have grown by 502,800 persons, or 6.9 per cent. Over the nine-year period the consistent trends have been increasing numbers of births (from 104,000 in 2001-02) and decreasing deaths (from 57,000 in 2001-02). Hence natural change has grown considerable from 47,000 in 2001-02 to 82,800 in 2009-10.

To conclude, both the increasing natural change and the significant decrease in the net migration outflow to the rest of the UK have contributed to the third highest annual growth in London's population since 2001. The level of growth has been held back only by the increased migration outflow to overseas.

Results for London Boroughs

The largest percentage increases amongst London boroughs were in Barking and Dagenham, Camden and the City of London. where estimated population for 2010 were 1.6 per cent or more higher than the estimates in 2009. Four London boroughs, Newham, Haringey, Kensington and Chelsea and Hammersmith and Fulham, were estimated a smaller population in 2010 than in 2009.

Table 3: Mid-year population estimates and population change, London boroughs

	Population			2009-10 change		2001-10 change	
	2001	2009	2010	Number	%	Number	%
Greater London	7,322,400	7,753,600	7,825,200	71,600	0.9	502,800	6.9
Inner London	2,859,400	3,030,100	3,083,300	53,200	1.8	223,900	7.8
Camden	202,600	231,200	235,400	4,200	1.8	32,800	16.2
City of London	7,400	11,500	11,700	200	1.7	4,300	58.1
Hackney	207,200	216,000	219,200	3,200	1.5	12,000	5.8
Hammersmith & Fulham	169,400	169,700	169,700	0	0.0	300	0.2
Haringey	221,300	225,500	225,000	-500	-0.2	3,700	1.7
Islington	179,400	191,800	194,100	2,300	1.2	14,700	8.2
Kensington & Chelsea	162,200	169,900	169,500	-400	-0.2	7,300	4.5
Lambeth	273,400	283,300	284,500	1,200	0.4	11,100	4.1
Lewisham	254,300	264,500	266,500	2,000	0.8	12,200	4.8
Newham	249,400	241,200	240,100	-1,100	-0.5	-9,300	-3.7
Southwark	256,700	285,600	287,000	1,400	0.5	30,300	11.8
Tower Hamlets	201,100	234,800	237,900	3,100	1.3	36,800	18.3
Wandsworth	271,700	286,600	289,600	3,000	1.0	17,900	6.6
Westminster	203,300	249,400	253,100	3,700	1.5	49,800	24.5
Outer London	4,463,000	4,638,300	4,742,000	103,700	2.2	279,000	6.3
Barking & Dagenham	165,700	175,600	179,700	4,100	2.3	14,000	8.4
Barnet	319,500	343,100	348,200	5,100	1.5	28,700	9.0
Bexley	218,800	225,900	228,000	2,100	0.9	9,200	4.2
Brent	269,600	255,500	256,600	1,100	0.4	-13,000	-4.8
Bromley	296,200	310,200	312,400	2,200	0.7	16,200	5.5
Croydon	335,100	342,800	345,600	2,800	0.8	10,500	3.1
Ealing	307,300	316,600	318,500	1,900	0.6	11,200	3.6
Enfield	277,300	291,200	294,900	3,700	1.3	17,600	6.3
Greenwich	217,500	226,100	228,500	2,400	1.1	11,000	5.1
Harrow	210,000	228,100	230,100	2,000	0.9	20,100	9.6
Havering	224,700	234,100	236,100	2,000	0.9	11,400	5.1
Hillingdon	245,600	262,500	266,100	3,600	1.4	20,500	8.3
Hounslow	216,000	234,200	236,800	2,600	1.1	20,800	9.6
Kingston upon Thames	149,000	166,700	169,000	2,300	1.4	20,000	13.4
Merton	191,100	206,400	208,800	2,400	1.2	17,700	9.3
Redbridge	241,900	267,700	270,500	2,800	1.0	28,600	11.8
Richmond upon Thames	174,300	189,000	190,900	1,900	1.0	16,600	9.5
Sutton	181,500	192,200	194,200	2,000	1.0	12,700	7.0
Waltham Forest	222,000	224,300	227,100	2,800	1.2	5,100	2.3

NB: Data may not sum due to rounding

Since 2001 seven London boroughs, City of London, Westminster, Tower Hamlets, Camden, Kingston upon Thames, Redbridge and Southwark have been estimated to have had considerable population growth (greater than ten per cent). The population of Westminster has been estimated to increase by over 49.8 thousand, or 24.5 per cent, since 2001. On the other hand the populations of Brent and Newham are estimated to have fallen between 2001 and 2010. However in 2009-10 Brent was estimated to have

grown, but Newham was joined by Kensington and Chelsea, Haringey and Hammersmith and Fulham as the London boroughs to have estimated reductions in their populations.

Table 4: Components of population change 2009-10, London boroughs, thousands

	Mid-2009 population	Live births	Deaths	Natural change	Net migration & other changes	Total change	Mid-2010 population
United Kingdom	61,792.0	796.8	553.7	243.2	226.9	470.0	62,262.0
England & Wales	54,809.1	712.9	485.7	227.2	204.2	431.4	55,240.5
Greater London	7,753.6	130.8	48.0	82.8	-11.2	71.6	7,825.2
Inner London	3,061.1	54.1	15.7	38.4	-16.2	22.1	3,083.3
Camden	231.2	3.1	1.1	2.0	2.2	4.1	235.4
City of London	11.5	0.1	0.0	0.0	0.2	0.2	11.7
Hackney	216.0	4.6	1.1	3.5	-0.3	3.2	219.2
Hammersmith & Fulham	169.7	2.8	0.9	2.0	-2.0	0.0	169.7
Haringey	225.5	4.4	1.2	3.2	-3.7	-0.5	225.0
Islington	191.8	3.0	1.1	1.9	0.3	2.3	194.1
Kensington & Chelsea	169.9	2.3	0.8	1.5	-1.8	-0.4	169.5
Lambeth	283.3	4.9	1.4	3.5	-2.3	1.2	284.5
Lewisham	264.5	5.0	1.6	3.4	-1.4	2.0	266.5
Newham	241.2	6.1	1.3	4.8	-5.9	-1.1	240.1
Southwark	285.6	4.9	1.4	3.5	-2.1	1.4	287.0
Tower Hamlets	234.8	4.5	1.0	3.5	-0.3	3.1	237.9
Wandsworth	286.6	5.4	1.6	3.8	-0.8	3.0	289.6
Westminster	249.4	3.0	1.1	1.9	1.8	3.7	253.1
Outer London	4,692.4	76.8	32.3	44.4	5.0	49.5	4,741.9
Barking & Dagenham	175.6	3.6	1.3	2.3	1.8	4.1	179.7
Barnet	343.1	5.3	2.4	2.9	2.2	5.1	348.2
Bexley	225.9	3.0	1.8	1.2	0.8	2.1	228.0
Brent	255.5	5.1	1.5	3.5	-2.4	1.1	256.6
Bromley	310.2	4.1	2.6	1.6	0.6	2.2	312.4
Croydon	342.8	5.3	2.4	2.9	-0.2	2.7	345.6
Ealing	316.6	5.7	1.9	3.8	-1.9	1.9	318.5
Enfield	291.2	5.0	2.0	2.9	0.8	3.7	294.9
Greenwich	226.1	4.5	1.7	2.9	-0.5	2.4	228.5
Harrow	228.1	3.3	1.4	1.9	0.0	1.9	230.1
Havering	234.1	2.7	2.2	0.6	1.4	2.0	236.1
Hillingdon	262.5	4.2	1.7	2.4	1.2	3.6	266.1
Hounslow	234.2	4.4	1.4	3.0	-0.4	2.5	236.8
Kingston upon Thames	166.7	2.3	1.0	1.3	1.0	2.2	169.0
Merton	206.4	3.5	1.2	2.3	0.1	2.4	208.8
Redbridge	267.7	4.3	1.8	2.6	0.2	2.8	270.5
Richmond upon Thames	189.0	3.0	1.2	1.8	0.1	2.0	190.9
Sutton	192.2	2.7	1.4	1.3	0.7	2.0	194.2
Waltham Forest	224.3	4.6	1.4	3.2	-0.4	2.8	227.1

NB: Data may not sum due to rounding

All boroughs had positive natural change, with the largest being 4.8 thousand in Newham followed by Wandsworth and Ealing with 3.8 thousand. Overall Outer London received net immigration while Inner London had net emigration, but the greatest net inflows were estimated for Camden and Barnet (2.2 thousand) and Camden (2.8 thousand). The largest net outflows were in Newham (-5.9 thousand) and Haringey (-3.7 thousand).

Table 5 shows the estimated migration flows for the London boroughs. Only six boroughs, led by Hammersmith and Fulham at 1.4 thousand, had a net international outflow, while the largest international net inflows were seen in, Camden and Newham. Twenty-four boroughs were estimated to have had a net internal migration loss, led by Newham (8.8 thousand) and Brent (5.2 thousand). The largest estimated internal net gains were seen in Havering (1.1 thousand) and Tower Hamlets (1.0 thousand). Four boroughs were estimated to have had a total inflow from all origins of over 30 thousand with the highest being 38.4 thousand persons estimated to have moved to Wandsworth, which also had the greatest outflow (39.2 thousand). Lambeth had the second highest flows in both directions.

Table 5: Migration flows, 2009-10, London boroughs

	Internal (UK) Migration			International Migration		
	Inflow	Outflow	Net	Inflow	Outflow	Net
Camden	20,800	22,300	-1,400	11,200	7,600	3,600
City of London	1,000	800	100	700	700	0
Hackney	18,200	18,700	-500	3,900	3,700	200
Hammersmith & Fulham	18,000	18,500	-500	5,800	7,200	-1,400
Haringey	19,300	23,300	-4,000	5,000	4,600	300
Islington	20,400	20,900	-500	6,000	5,200	900
Kensington & Chelsea	11,500	12,900	-1,400	6,100	6,600	-500
Lambeth	28,100	29,700	-1,600	5,500	6,300	-800
Lewisham	18,800	21,500	-2,700	4,200	2,900	1,300
Newham	15,200	24,000	-8,800	6,200	3,300	2,900
Southwark	23,300	27,200	-3,900	6,300	4,500	1,900
Tower Hamlets	21,500	20,500	1,000	6,500	7,900	-1,400
Wandsworth	30,700	30,800	-100	7,700	8,400	-800
Westminster	20,700	20,700	0	11,300	9,500	1,700
Barking & Dagenham	11,200	11,400	-100	2,600	600	2,000
Barnet	21,100	21,100	-100	6,300	4,000	2,300
Bexley	10,200	10,000	200	1,000	400	700
Brent	17,300	22,500	-5,200	6,900	4,100	2,800
Bromley	15,300	15,100	200	1,500	1,100	500
Croydon	18,300	19,300	-1,000	3,500	2,600	900
Ealing	20,900	24,500	-3,600	8,200	6,500	1,700
Enfield	17,000	18,200	-1,300	3,300	1,300	2,000
Greenwich	15,700	17,700	-2,000	4,400	3,000	1,400
Harrow	13,700	15,000	-1,300	3,100	1,700	1,400
Havering	10,000	8,900	1,100	700	400	400
Hillingdon	15,400	16,000	-600	3,700	1,900	1,800
Hounslow	15,900	17,100	-1,200	5,600	4,800	800
Kingston upon Thames	12,000	12,700	-600	3,100	1,500	1,600
Merton	15,100	16,000	-900	4,300	3,300	1,000
Redbridge	17,200	17,000	200	3,000	3,000	0
Richmond upon Thames	13,300	12,900	500	2,200	2,600	-400
Sutton	10,000	9,500	400	1,200	900	300
Waltham Forest	14,400	17,000	-2,700	5,100	2,800	2,300

NB: Data may not sum due to rounding

For more information please contact *Baljit Bains*, Demography & Policy Analysis Manager, Intelligence Unit, Greater London Authority, City Hall, The Queen's Walk, London SE1 2AA
Tel: 020 7983 4613 e-mail: Baljit.Bains@london.gov.uk

Copyright © Greater London Authority, 2011
ONS statistics presented in this Update have been reproduced with the permission of the Controller of Her Majesty's Stationery Office and are © Crown Copyright.