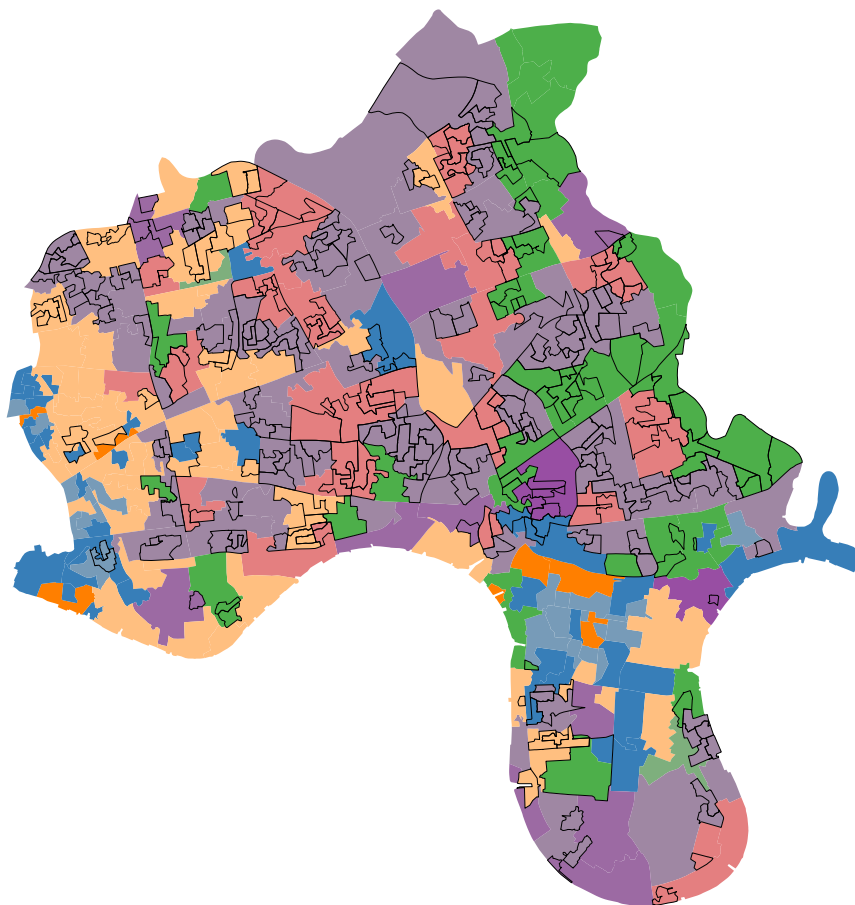
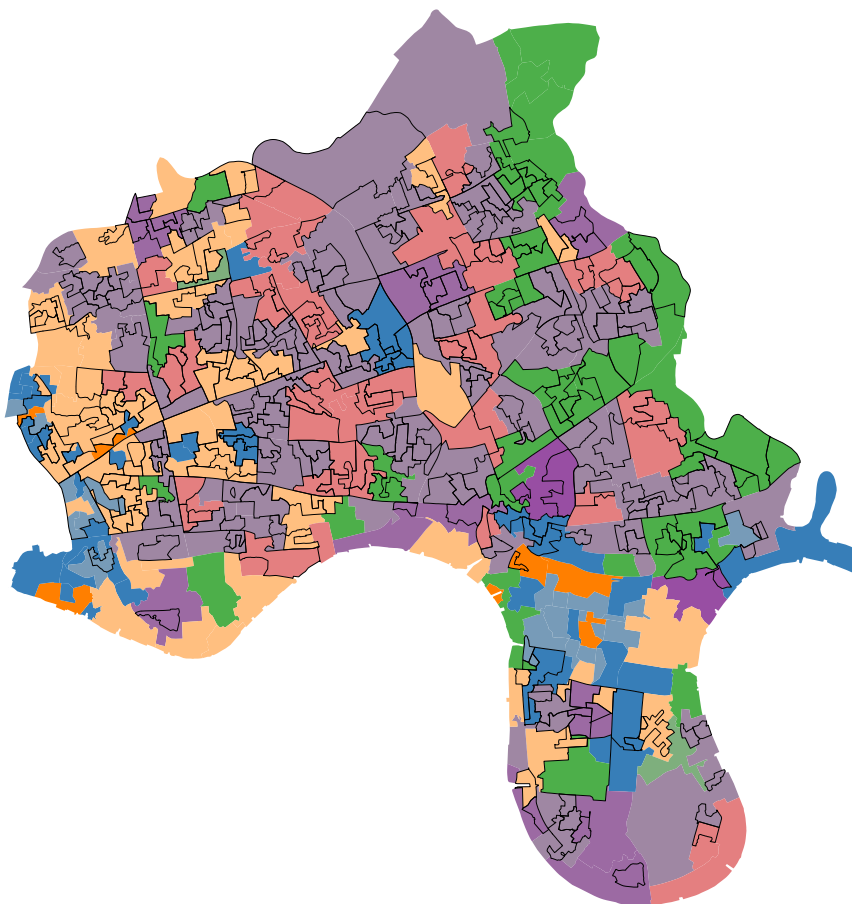


Tower Hamlets
Socially Rented

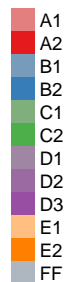


0.0 0.5 1.0 1.5 km

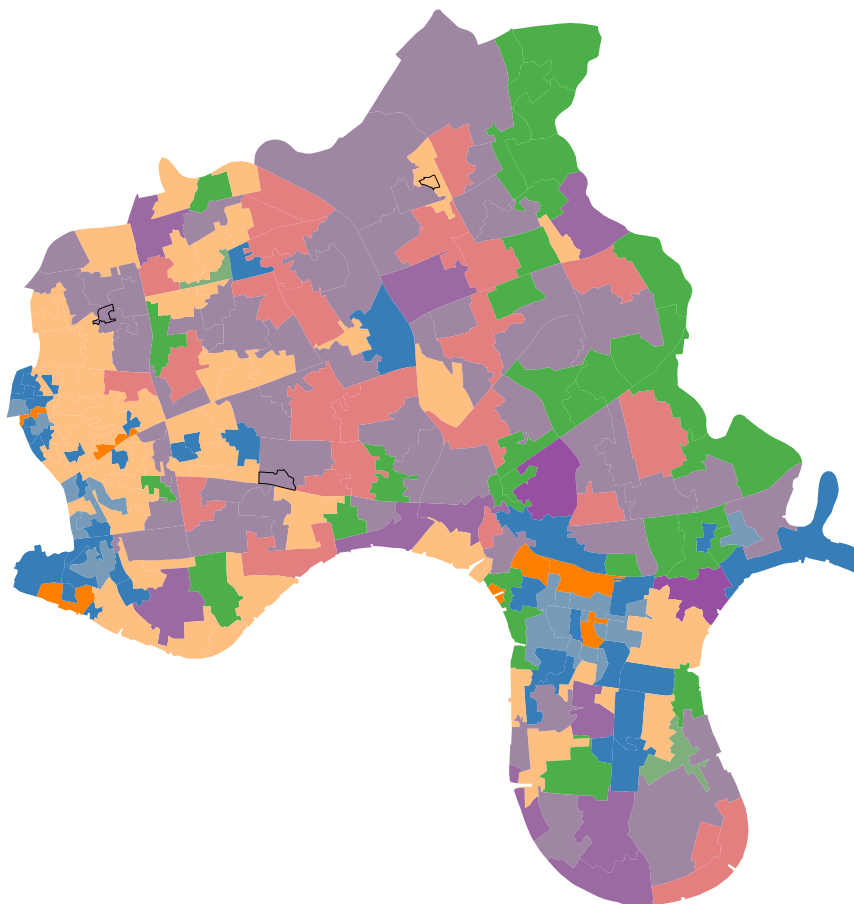
Tower Hamlets
Aged 16–24



Sub Group



Tower Hamlets
Aged 65+

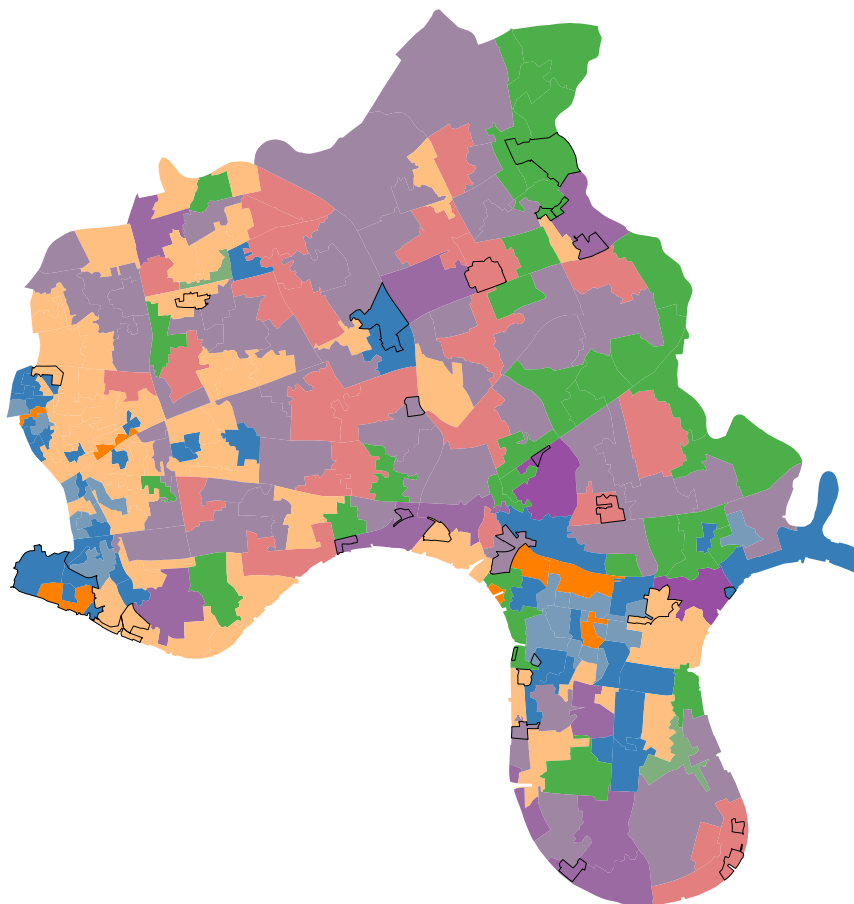


Sub Group

- A1
- A2
- B1
- B2
- C1
- C2
- D1
- D2
- D3
- E1
- E2
- FF

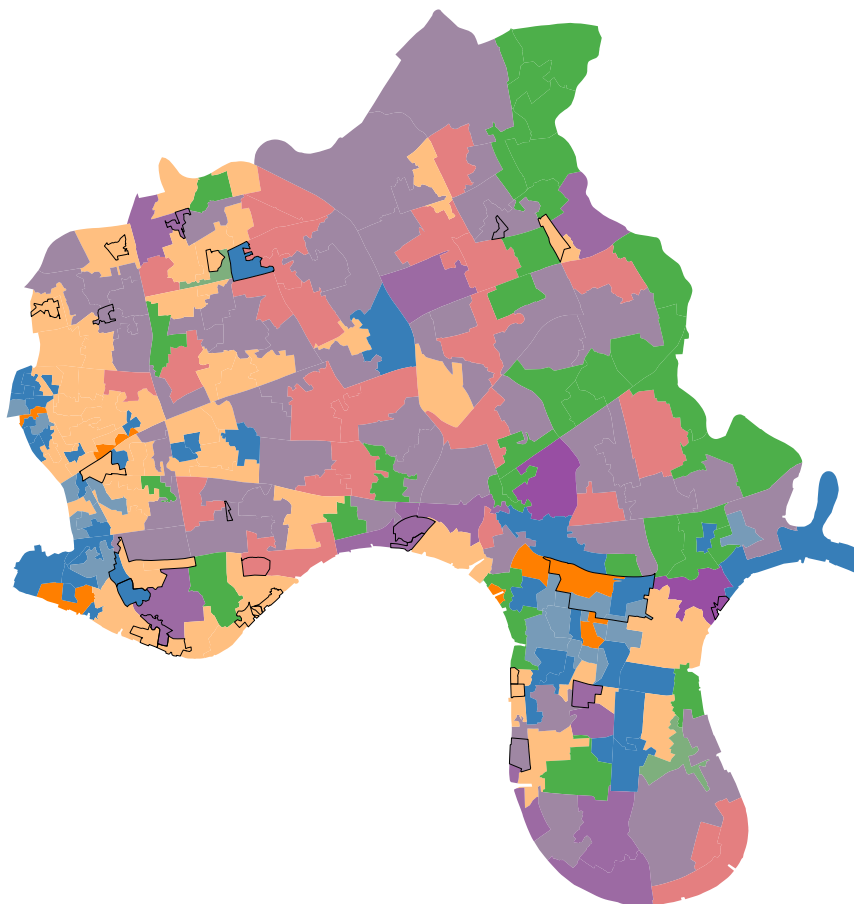
0.0 0.5 1.0 1.5 km

Tower Hamlets
Lone parent in part-time employment

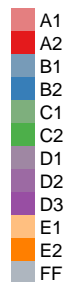


0.0 0.5 1.0 1.5 km

Tower Hamlets
Lone parent in full-time employment

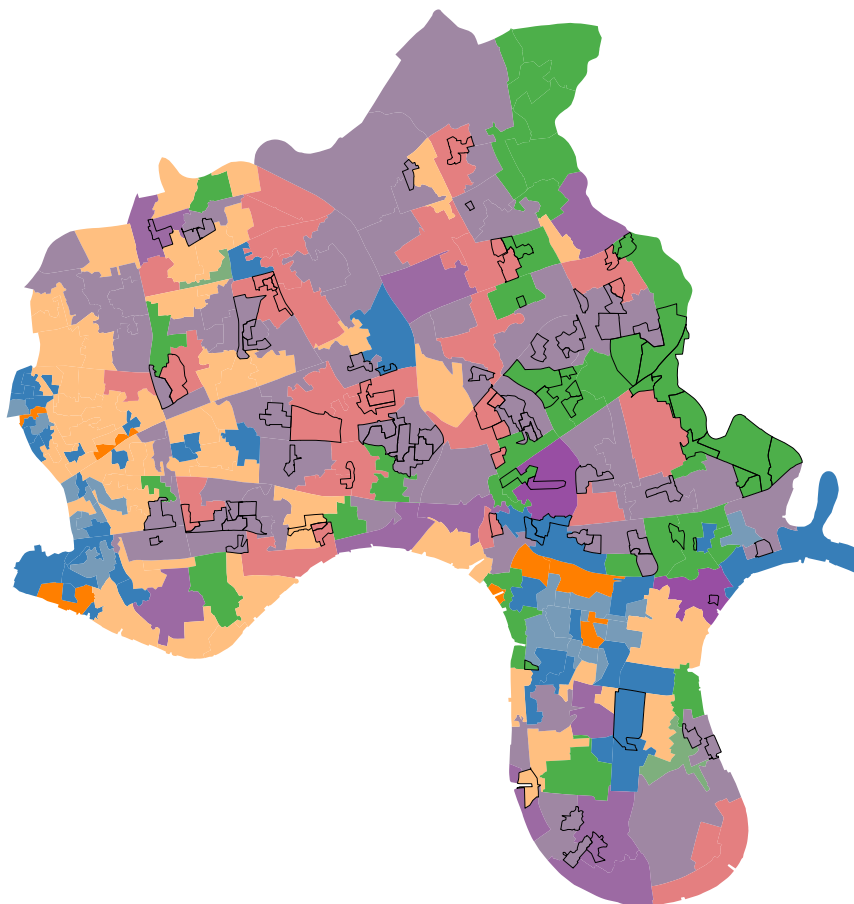


Sub Group



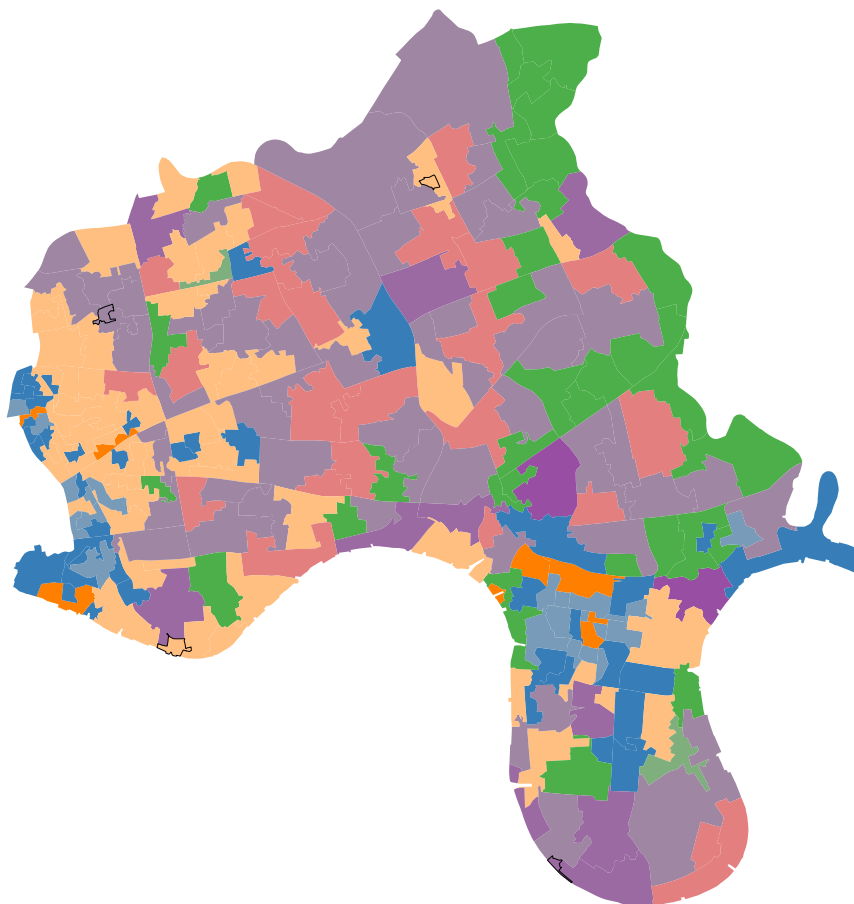
0.0 0.5 1.0 1.5 km

Tower Hamlets
Dependent children in household: All ages

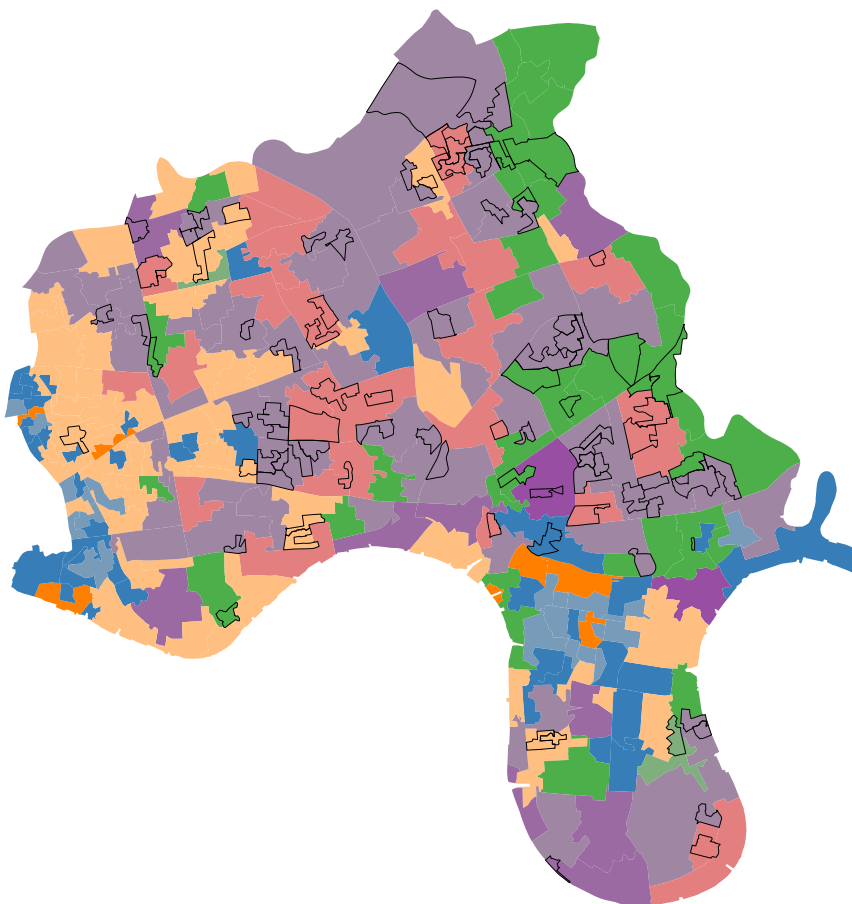


0.0 0.5 1.0 1.5 km

Tower Hamlets
Old age dependency ratio

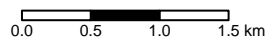


0.0 0.5 1.0 1.5 km

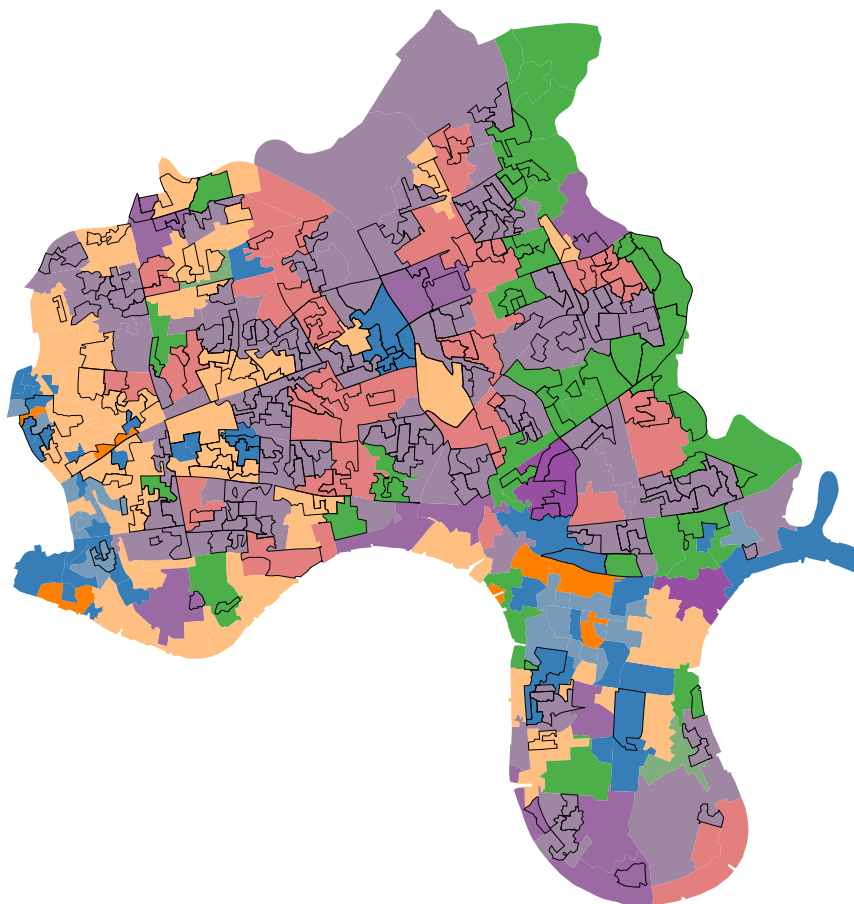


Tower Hamlets
No Qualification

Sub Group



Tower Hamlets
Economically Inactive: Students



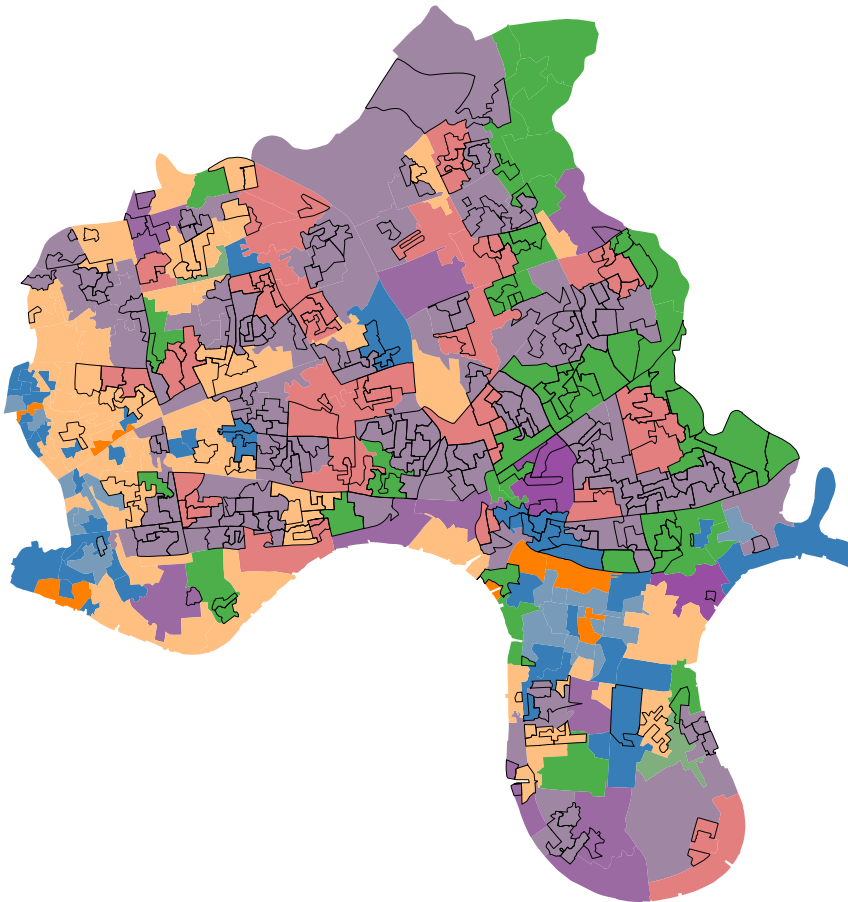
Sub Group

- A1
- A2
- B1
- B2
- C1
- C2
- D1
- D2
- D3
- E1
- E2
- FF

0.0 0.5 1.0 1.5 km

Tower Hamlets

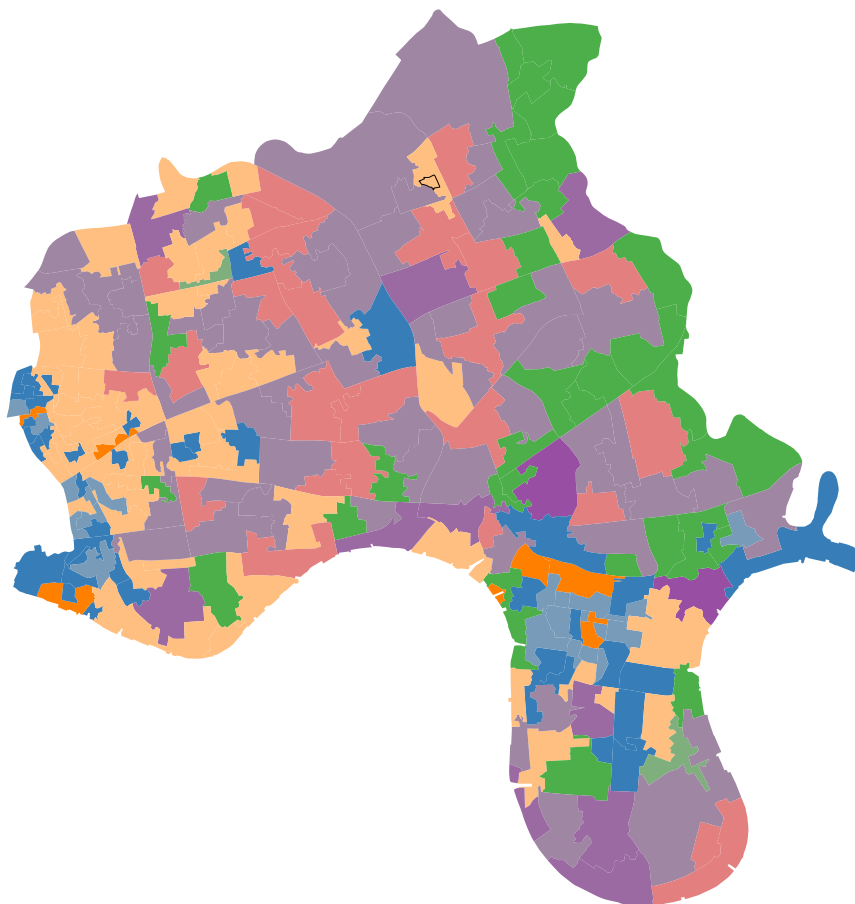
Economically Inactive: Looking after family / home



Sub Group

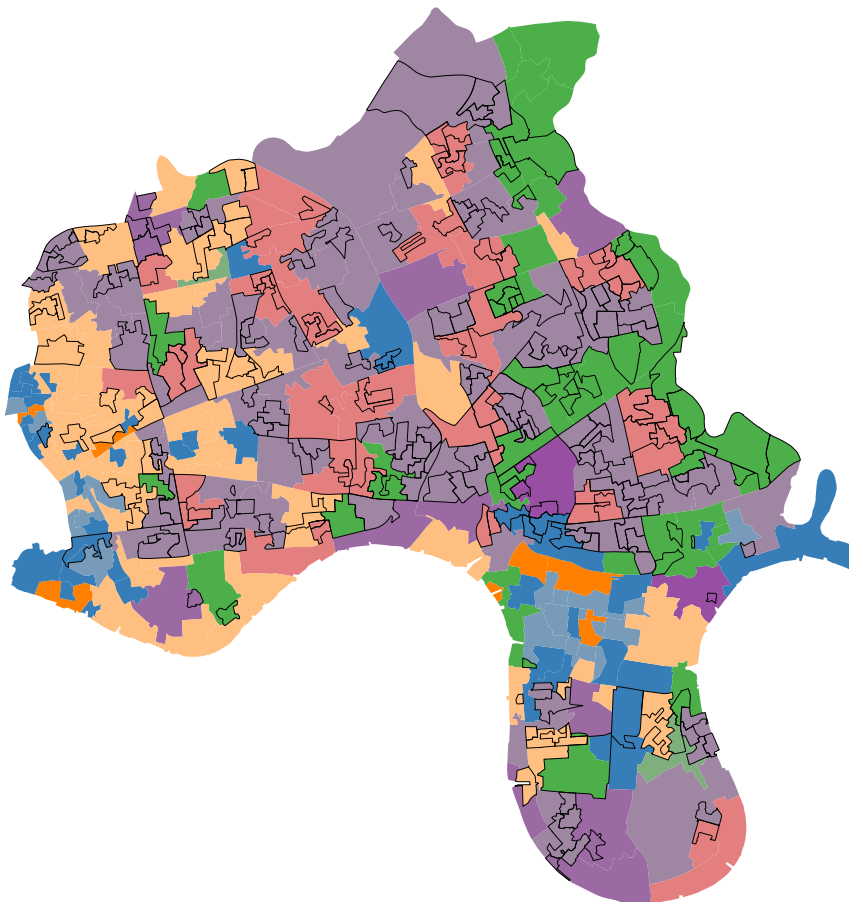


Tower Hamlets
Economically Inactive: Retired

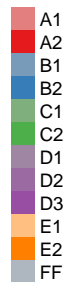


0.0 0.5 1.0 1.5 km

Tower Hamlets
Unemployed

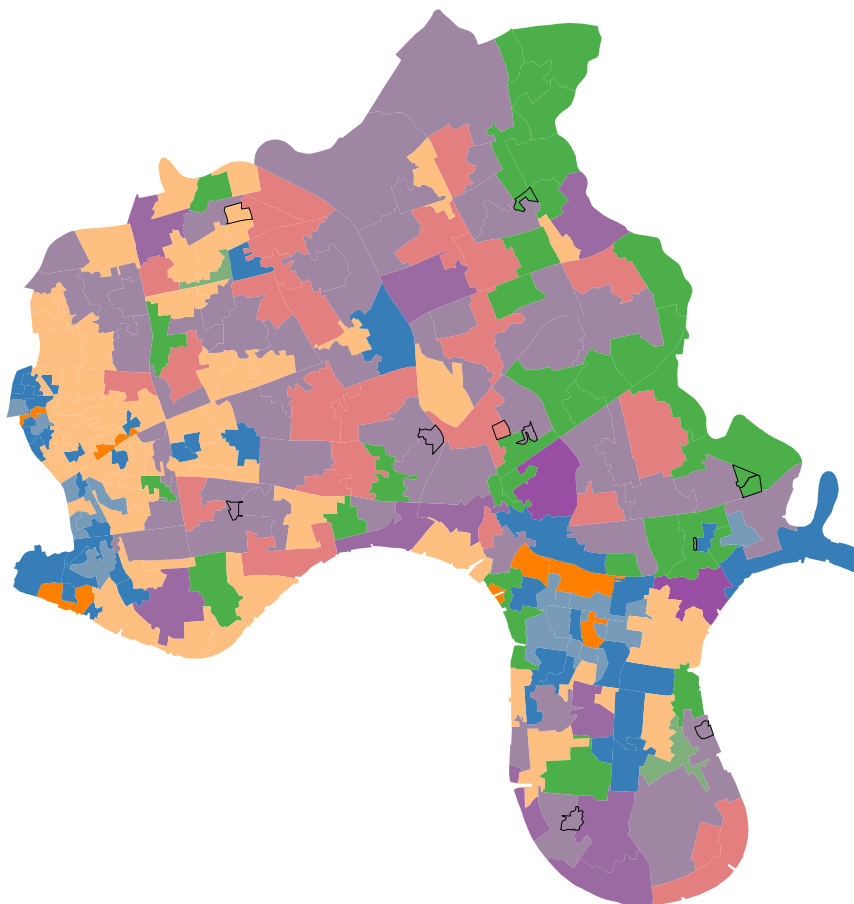


Sub Group

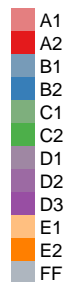


0.0 0.5 1.0 1.5 km

Tower Hamlets
Churn



Sub Group



0.0 0.5 1.0 1.5 km