

Client
Southwark GP Nominee 1 Ltd. and
Southwark GP Nominee 2 Ltd.

Structural Engineer
WSP
Tel: 020 7337 1700

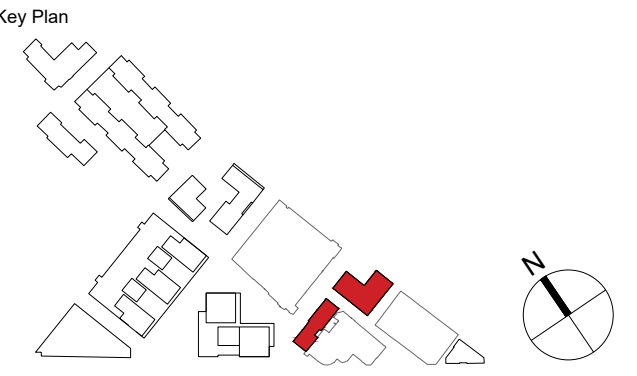
MEP Engineer
Hilson Moran
Tel: 020 7940 8888

Landscape Consultant (Strategy)
Arup
Tel: 020 7636 1531

Landscape Consultant (Design)
Andy Sturgeon
Tel: 012 7367 2575

Structural Engineer (Building F)
AKT II
Tel: 020 7250 7777

B	AMENDED PROPOSALS	16.09.19
A	ADDENDUM	04.06.18
No.	Issue	Check Date



**Kohn Pedersen Fox Associates
(International) PA**
Architects and Planning Consultants

7a Langley Street
London WC2H 9JA
England
T: +44 (0) 20 3119 5300
F: +44 (0) 20 7497 1175
<http://www.kpf.com>

Proj. No. 2607
Project **Bermondsey Project**

Scale 1:200 @ A1
Drawn by
Checked by

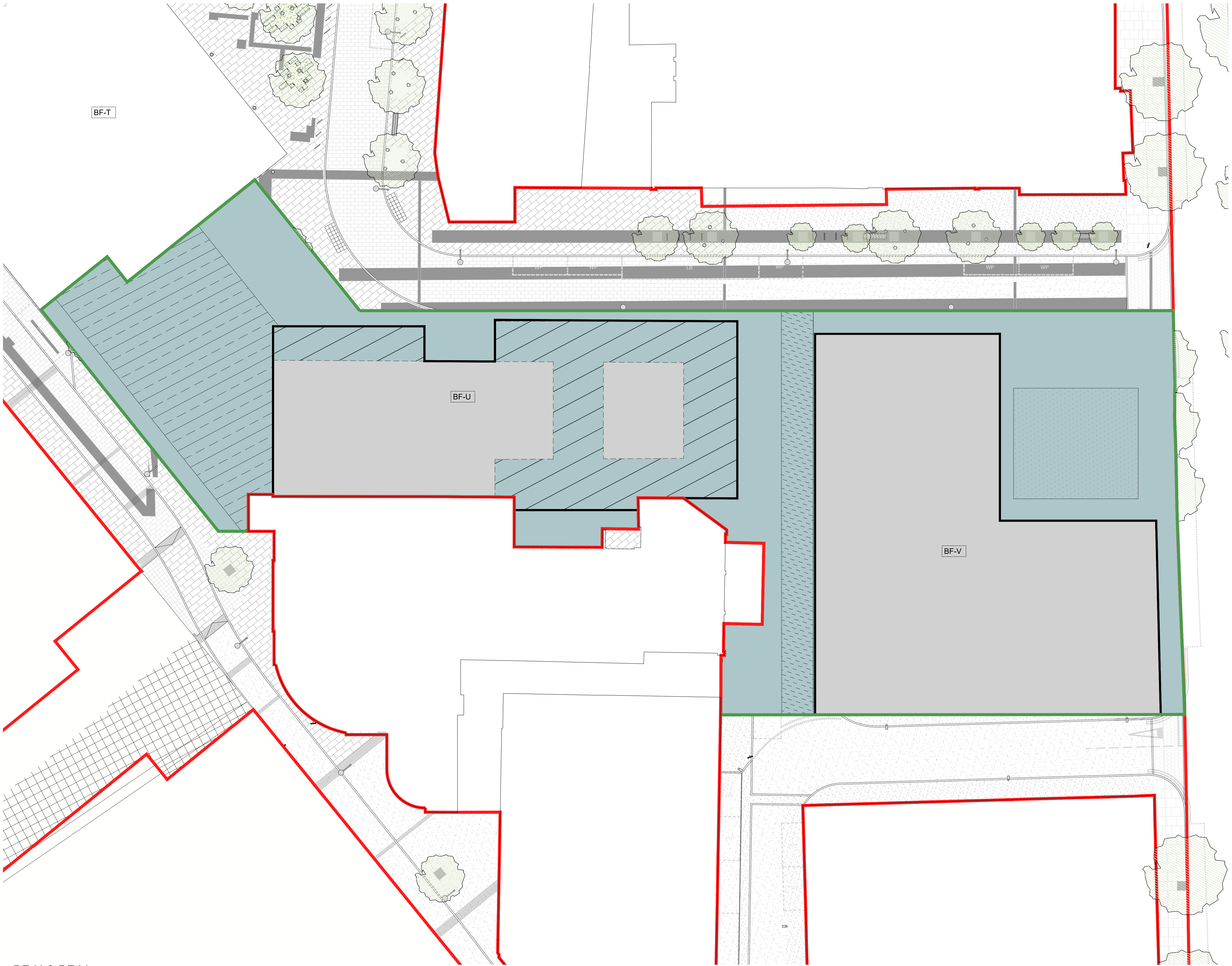
Drawing Title and No.
BF-U & BF-V

LANDSCAPE & PUBLIC REALM
PARAMETER PLAN

Drawing Ref.
2607-KPF-BF06-XX-DR-PLN-

A-0016

B



BF-U & BF-V LANDSCAPE & PUBLIC REALM

SCALE: 1:200 @ A1

MAX EXTENT OF PROPOSED BUILDING
HORIZONTAL LIMIT

OUTLINE PLANNING
APPLICATION BOUNDARY

GROUND FLOOR
ARCADE ZONE

WIND CANOPY
MAX EXTENT

PUBLIC
REALM

SECONDARY
VEHICULAR
ZONE

AMENITY SPACE
ZONE

0 5M 10M 20M
SCALE: 1:200

