

Client
Southwark GP Nominee 1 Ltd. and
Southwark GP Nominee 2 Ltd.

Structural Engineer
WSP
Tel: 020 7337 1700

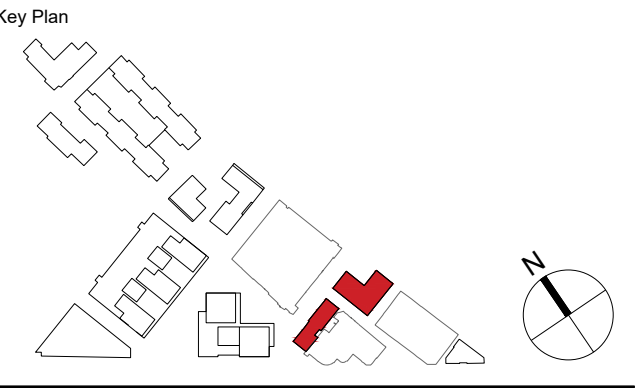
MEP Engineer
Hilson Moran
Tel: 020 7940 8888

Landscape Consultant (Strategy)
Arup
Tel: 020 7636 1531

Landscape Consultant (Design)
Andy Sturgeon
Tel: 012 7367 2575

Structural Engineer (Building F)
AKT II
Tel: 020 7250 7777

| | | |
|-----|-------------------|------------|
| B | AMENDED PROPOSALS | 16.09.19 |
| A | ADDENDUM | 04.06.18 |
| No. | Issue | Check Date |



**Kohn Pedersen Fox Associates
(International) PA**
Architects and Planning Consultants

7a Langley Street
London WC2H 9JA
England
T: +44 (0) 20 3119 5300
F: +44 (0) 20 7497 1175
<http://www.kpf.com>

Proj. No. 2607
Project **Bermondsey Project**

Scale 1:200 @ A1
Drawn by
Checked by

Drawing Title and No.
BF-U & BF-V

ACCESS ARRANGEMENTS

PARAMETER PLAN

Drawing Ref. 2607-KPF-BF06-XX-DR-PLN-
Rev.

A-0015 **B**

