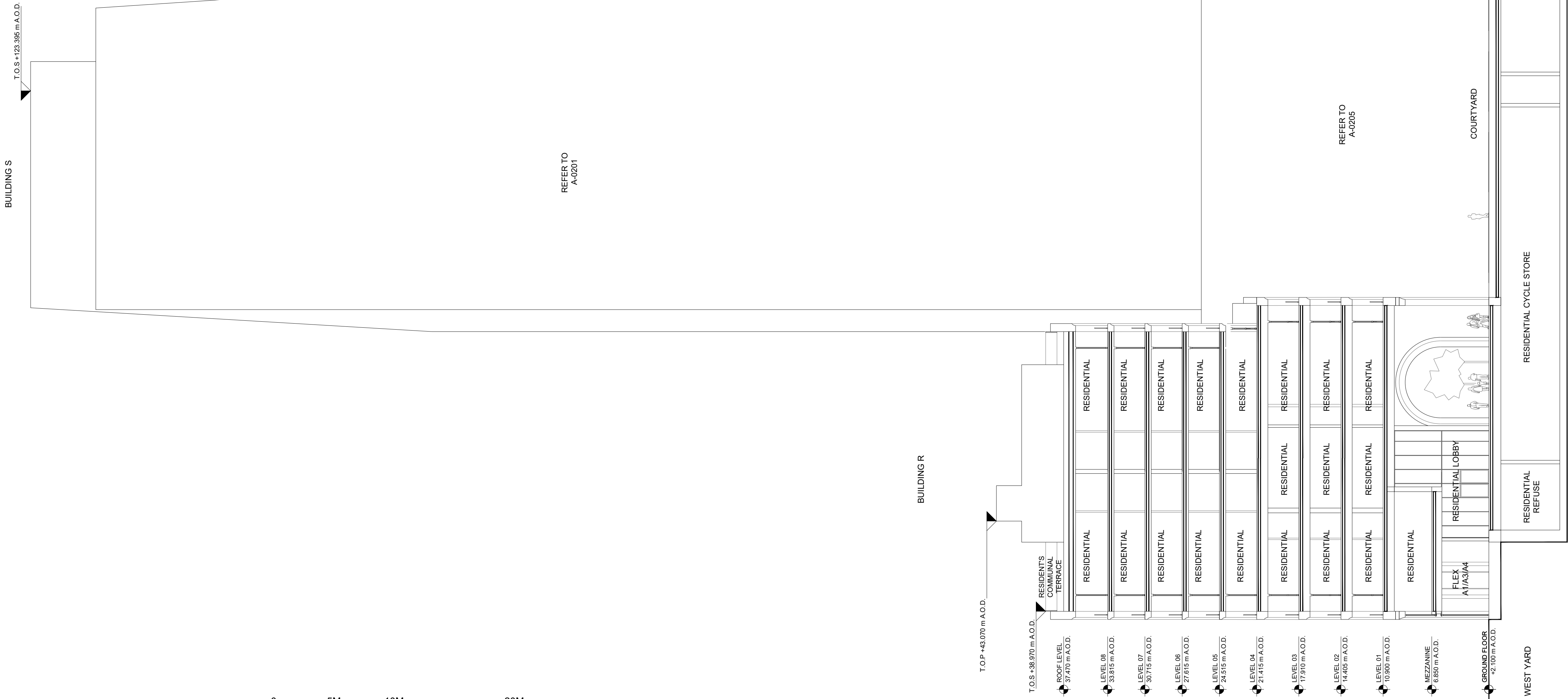
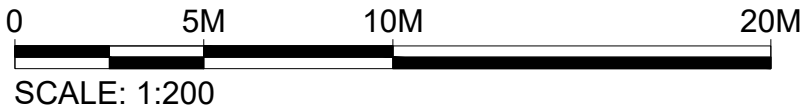


1

EAST-WEST SECTION

SCALE: 1:200 @ A1



Client
Southwark GP Nominee 1 Ltd. and
Southwark GP Nominee 2 Ltd.

Structural Engineer
WSP
Tel: 020 7337 1700

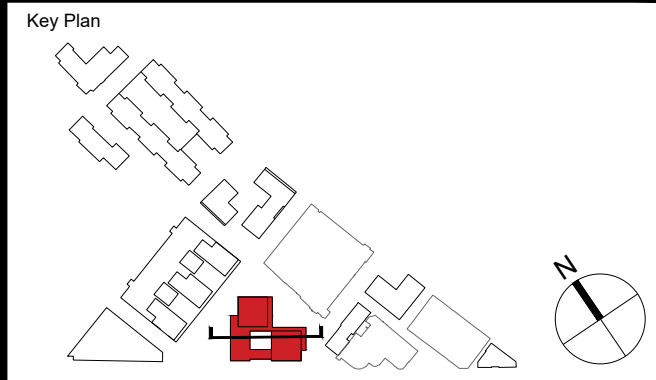
MEP Engineer
Hilson Moran
Tel: 020 7940 8888

Landscape Consultant (Strategy)
Arup
Tel: 020 7636 1531

Landscape Consultant (Design)
Andy Sturgeon
Tel: 012 7367 2575

Structural Engineer (Building F)
AKT II
Tel: 020 7250 7777

A AMENDED PROPOSALS				16.09.19
No.	Issue	Check	Date	



**Kohn Pedersen Fox Associates
(International) PA**
Architects and Planning Consultants

7a Langley Street
London WC2H 9JA
England
T: +44 (0) 20 3119 5300
F: +44 (0) 20 7497 1175
<http://www.kpf.com>

Proj. No.	Project		
2607	Bermondsey Project		
Scale	Drawn by		Checked by
1:200 @A1	YN		

Drawing Title and No.
BF-RS&T
EAST-WEST SECTION
PROPOSED

Drawing Ref.
2607-KPF-BF04-XX-DR-SEC-

A-0251