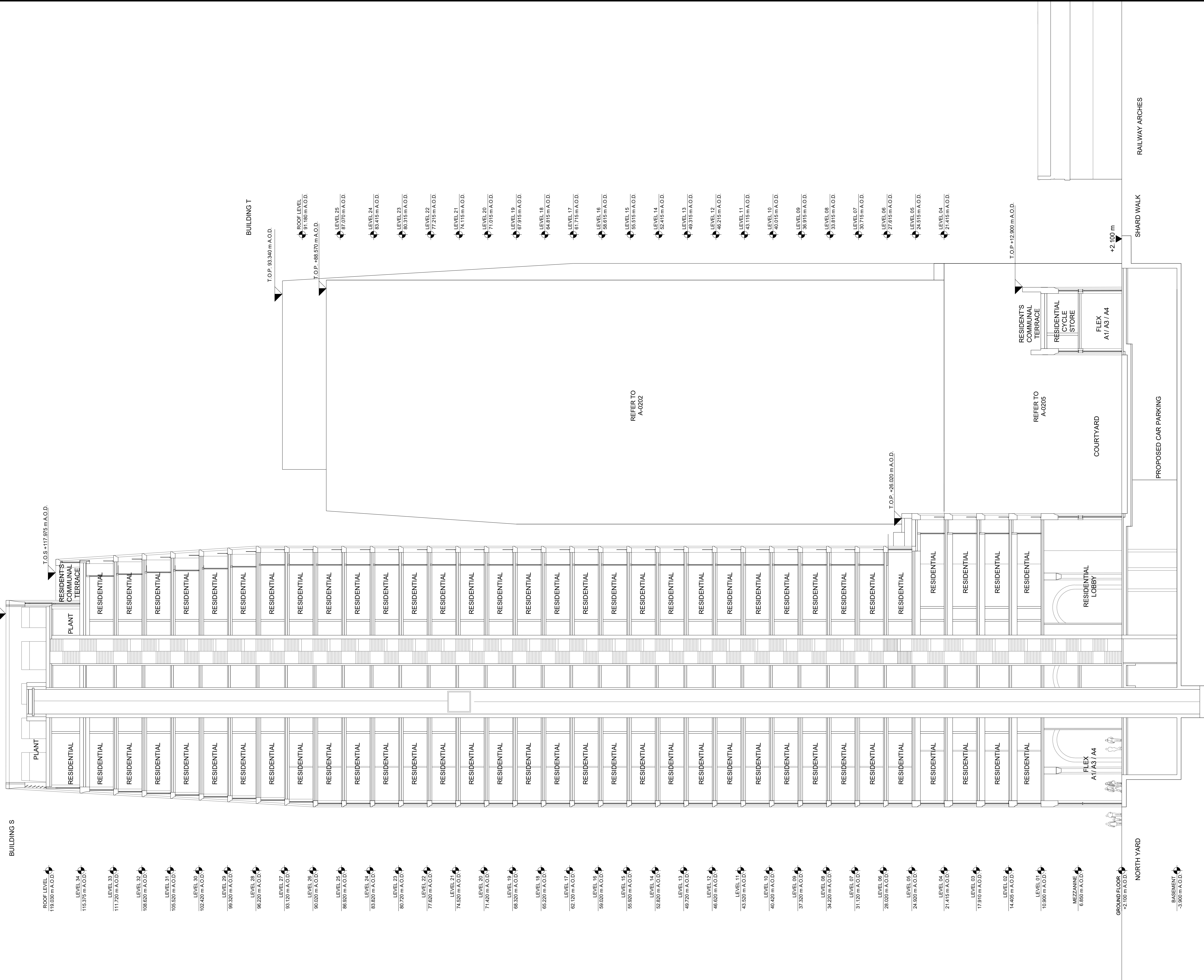


1
SCALE: 1:200 @ A1

BF-RS&T
NORTH-SOUTH SECTION



Client
Southwark GP Nominee 1 Ltd. and
Southwark GP Nominee 2 Ltd.

Structural Engineer
WSP
Tel: 020 7337 1700

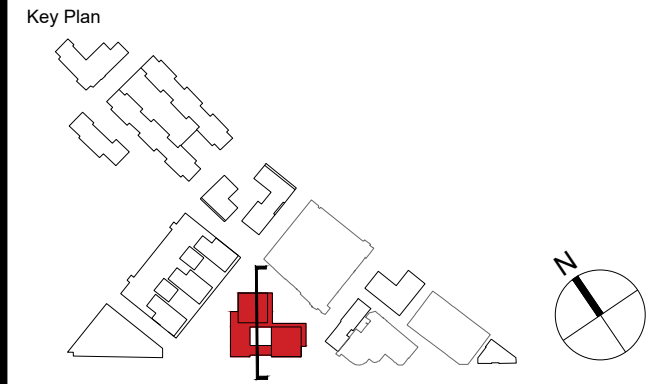
MEP Engineer
Hilson Moran
Tel: 020 7940 8888

Landscape Consultant (Strategy)
Arup
Tel: 020 7636 1531

Landscape Consultant (Design)
Andy Sturgeon
Tel: 012 7367 2575

Structural Engineer (Building F)
AKT II
Tel: 020 7250 7777

A AMENDED PROPOSALS			16.09.19
No.	Issue	Check	Date



**Kohn Pedersen Fox Associates
(International) PA**
Architects and Planning Consultants

7a Langley Street
London WC2H 9JA
England
T: +44 (0) 20 3119 5300
F: +44 (0) 20 7497 1175
<http://www.kpf.com>

Project No.		Project	
2607		Bermondsey Project	
Scale	Drawn by	Checked by	
1:200 @ A1	PS		

Drawing Title and No.
BF-RS&T
NORTH-SOUTH SECTION
PROPOSED

Drawing Ref.	Rev.
2607-KPF-BF04-XX-DR-SEC-	

A-0250 **A**