

**Structural Engineer**  
WSP  
Tel: 020 7337 1700

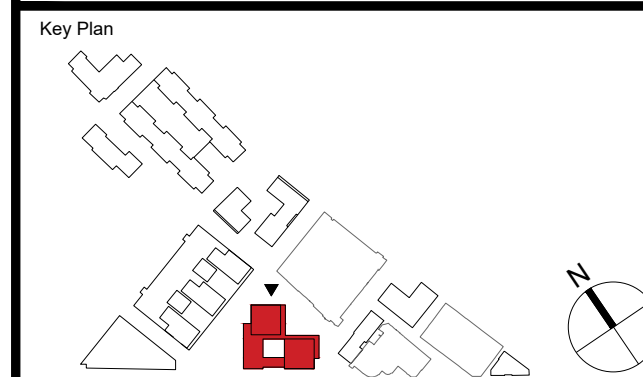
**MEP Engineer**  
Hilson Moran  
Tel: 020 7940 8888

**Landscape Consultant (Strategy)**  
Arup  
Tel: 020 7636 1531

**Landscape Consultant (Design)**  
Andy Sturgeon  
Tel: 012 7367 2575

**Structural Engineer (Building F**  
AKT II  
Tel: 020 7250 7777

C	AMENDED PROPOSALS	16.09.1
B	ADDENDUM	04.06.1
A	ADDENDUM	19.01.1
No.	Issue	Check Date



**Kohn Pedersen Fox Associates  
(International) PA**  
Architects and Planning Consultants

7a Langley Street  
London WC2H 9JA  
England  
T: +44 (0) 20 3119 5300  
F: +44 (0) 20 7497 1175  
<http://www.kpf.com>

Proj. No.	Project
2607	Bermondsey Project

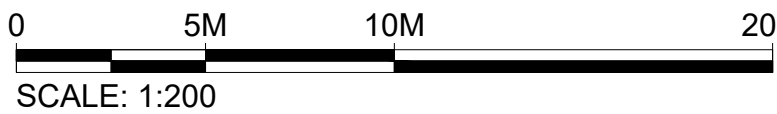
Scale	Drawn by	Checked by
1:200@A1	BA	PS

Drawing Title and No.  
BF-RS&T  
NORTHEAST ELEVATION  
PROPOSED

Drawing Ref. 2607-KPF-BF04-XX-DR-ELE- Rev.

A-0203 C

© 2018 KOHN PEDERSEN FOX ASSOCIATES (INTERNATIONAL) PA. All rights reserved.  
Wherever possible, we have used Creative Commons Attribution-NonCommercial 4.0 International License (CC BY-NC 4.0).



BF-RS&T  
NORTHEAST ELEVATION

SCALE: 1:200 @ A1