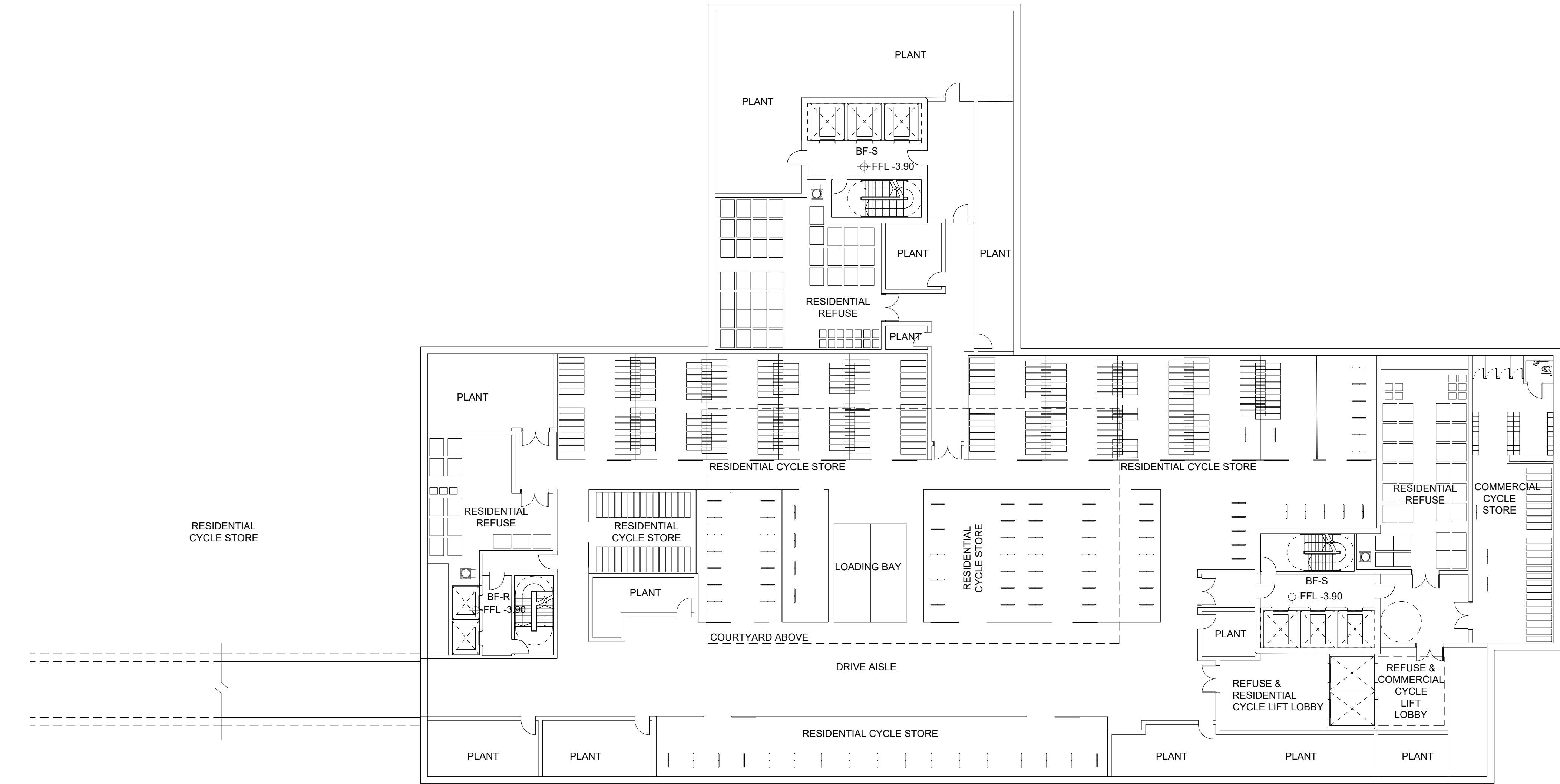
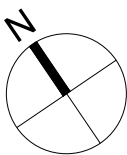
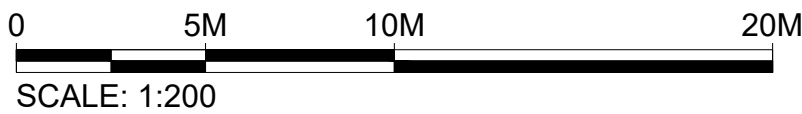


Filename: H:\2607_Project\Sunbeam\Drawings\CAD\Sheet\2607-KPF-BF04-B1-DR-PLN-A-0099.dwg Plotted by: Ascoglu, Bekir Plot Time: 9/11/2019 5:00 PM



**BF-RS&T
BASEMENT PLAN**
SCALE: 1:200 @ A1



KPF

Client
Southwark GP Nominee 1 Ltd. and
Southwark GP Nominee 2 Ltd.

Structural Engineer
WSP
Tel: 020 7337 1700

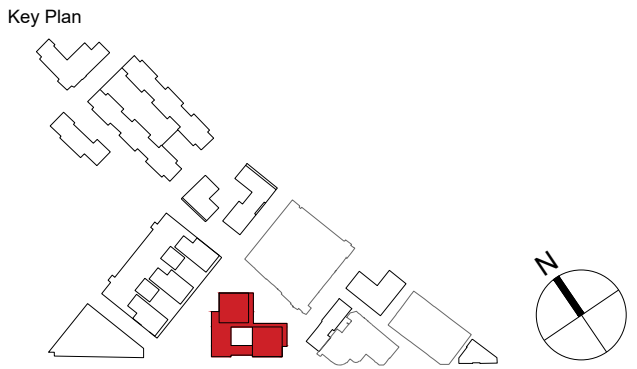
MEP Engineer
Hilson Moran
Tel: 020 7940 8888

Landscape Consultant (Strategy)
Arup
Tel: 020 7636 1531

Landscape Consultant (Design)
Andy Sturgeon
Tel: 012 7367 2575

Structural Engineer (Building F)
AKT II
Tel: 020 7250 7777

A AMENDED PROPOSALS		16.09.19
No.	Issue	Check Date



**Kohn Pedersen Fox Associates
(International) PA**
Architects and Planning Consultants

7a Langley Street
London WC2H 9JA
England
T: +44 (0) 20 3119 5300
F: +44 (0) 20 7497 1175
<http://www.kpf.com>

Proj. No. 2607 Project **Bermondsey Project**

Scale 1:200 @ A1 Drawn by YN Checked by

Drawing Title and No.
BF-RS&T
BASEMENT PLAN
PROPOSED

Drawing Ref. 2607-KPF-BF04-B1-DR-PLN-
A-0099 Rev.

© 2018 KOHN PEDERSEN FOX ASSOCIATES (INTERNATIONAL) PA. All rights reserved.
Where drawing contains Ordnance Survey data © Crown Copyright. Licence no. 10001998.