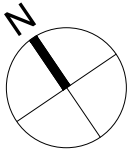
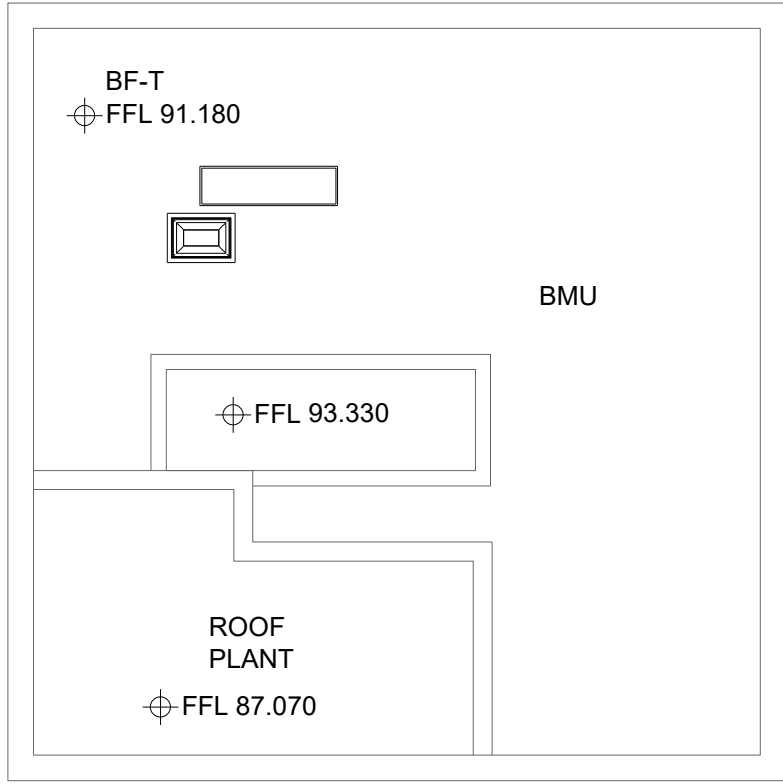
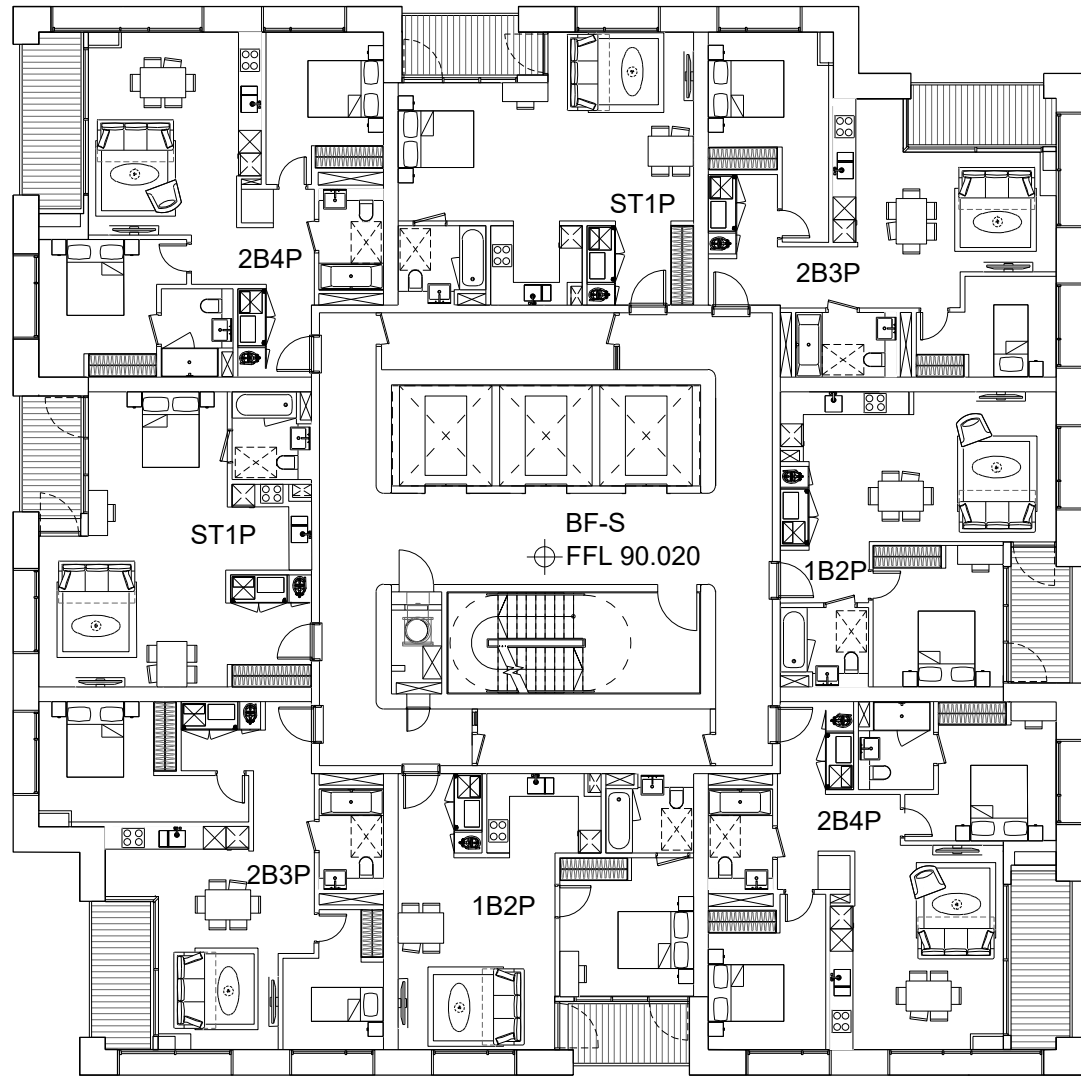


Filename: H:\2607_Project\Sunbeam\Drawings\CAD\Sheet\2607-KPF-BF04-26-DR-PLN-A-0127.dwg Plotted by: Ascioglu, Bekir Plot Time: 9/11/2019 4:28 PM

1

BF-RS&T
LEVEL 26 FLOOR PLAN

SCALE: 1:200 @ A1



KPF

Client
Southwark GP Nominee 1 Ltd. and
Southwark GP Nominee 2 Ltd.

Structural Engineer
WSP
Tel: 020 7337 1700

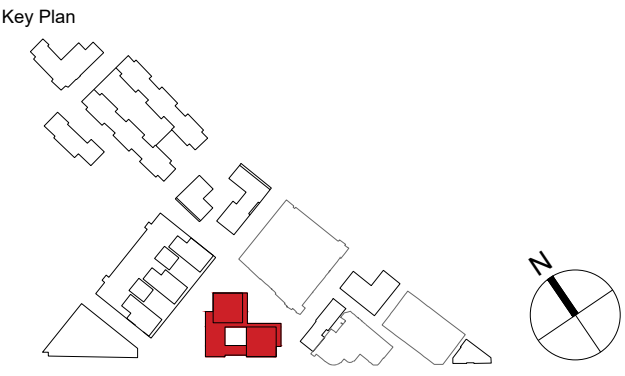
MEP Engineer
Hilson Moran
Tel: 020 7940 8888

Landscape Consultant (Strategy)
Arup
Tel: 020 7636 1531

Landscape Consultant (Design)
Andy Sturgeon
Tel: 012 7367 2575

Structural Engineer (Building F)
AKT II
Tel: 020 7250 7777

C	AMENDED PROPOSALS	16.09.19
B	ADDENDUM	04.06.18
A	ADDENDUM	19.01.18
No.	Issue	Check Date



**Kohn Pedersen Fox Associates
(International) PA**
Architects and Planning Consultants

7a Langley Street
London WC2H 9JA
England
T: +44 (0) 20 3119 5300
F: +44 (0) 20 7497 1175
<http://www.kpf.com>

Proj. No.	Project	
2607	Bermondsey Project	
Scale	Drawn by	Checked by
1:200 @ A1	YN	

Drawing Title and No.	Rev.
BF-RS&T	
LEVEL 26 FLOOR PLAN	
PROPOSED	
Drawing Ref.	
2607-KPF-BF04-26-DR-PLN-	
A-0127	C