

**Client**  
Southwark GP Nominee 1 Ltd. and  
Southwark GP Nominee 2 Ltd.

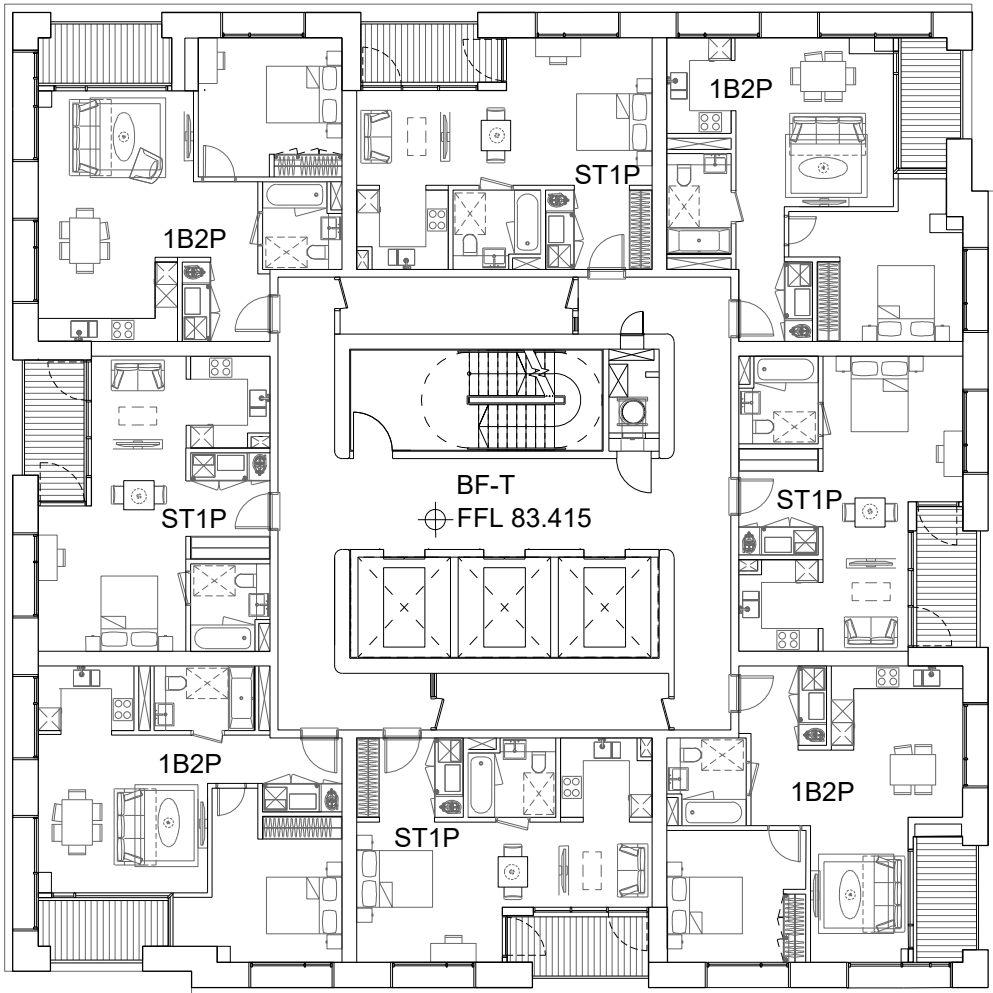
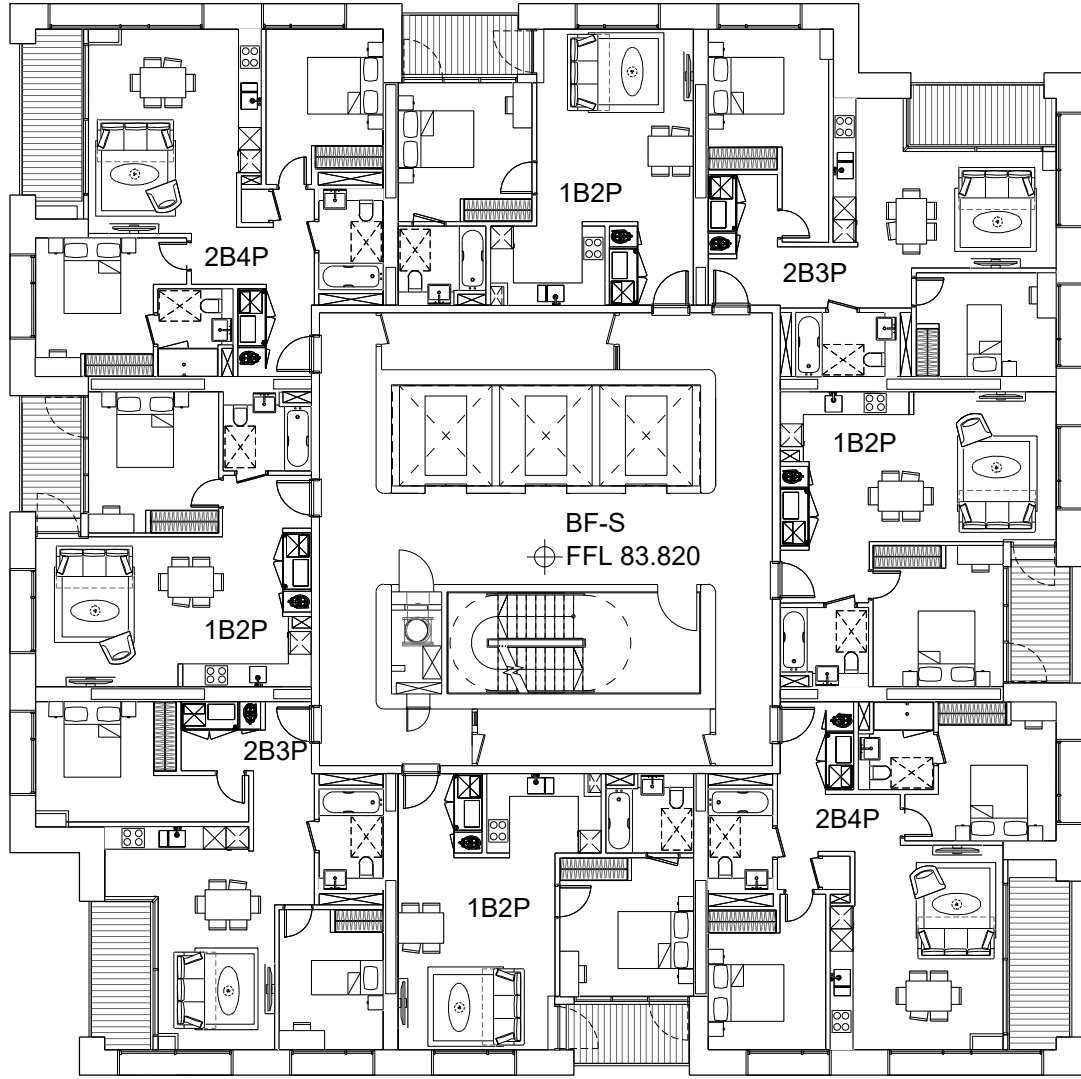
**Structural Engineer**  
WSP  
Tel: 020 7337 1700

**MEP Engineer**  
Hilson Moran  
Tel: 020 7940 8888

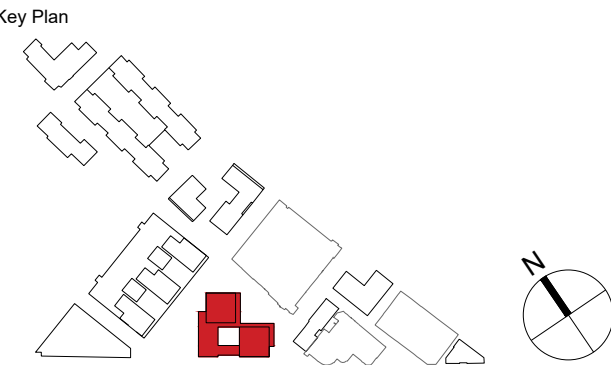
**Landscape Consultant (Strategy)**  
Arup  
Tel: 020 7636 1531

**Landscape Consultant (Design)**  
Andy Sturgeon  
Tel: 012 7367 2575

**Structural Engineer (Building F)**  
AKT II  
Tel: 020 7250 7777



C	AMENDED PROPOSALS	16.09.19	
B	ADDENDUM	04.06.18	
A	ADDENDUM	19.01.18	
No.	Issue	Check	Date



**Kohn Pedersen Fox Associates  
(International) PA**  
Architects and Planning Consultants  
  
7a Langley Street  
London WC2H 9JA  
England  
T: +44 (0) 20 3119 5300  
F: +44 (0) 20 7497 1175  
<http://www.kpf.com>

Proj. No. 2607  
Project Bermondsey Project  
Scale 1:200 @A1  
Drawn by YN  
Checked by

Drawing Title and No.  
BF-RS&T  
LEVEL 24 FLOOR PLAN  
PROPOSED  
Drawing Ref. 2607-KPF-BF04-24-DR-PLN-A-0125  
Rev. C

