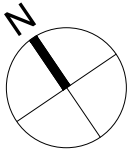
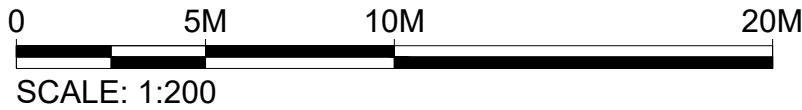
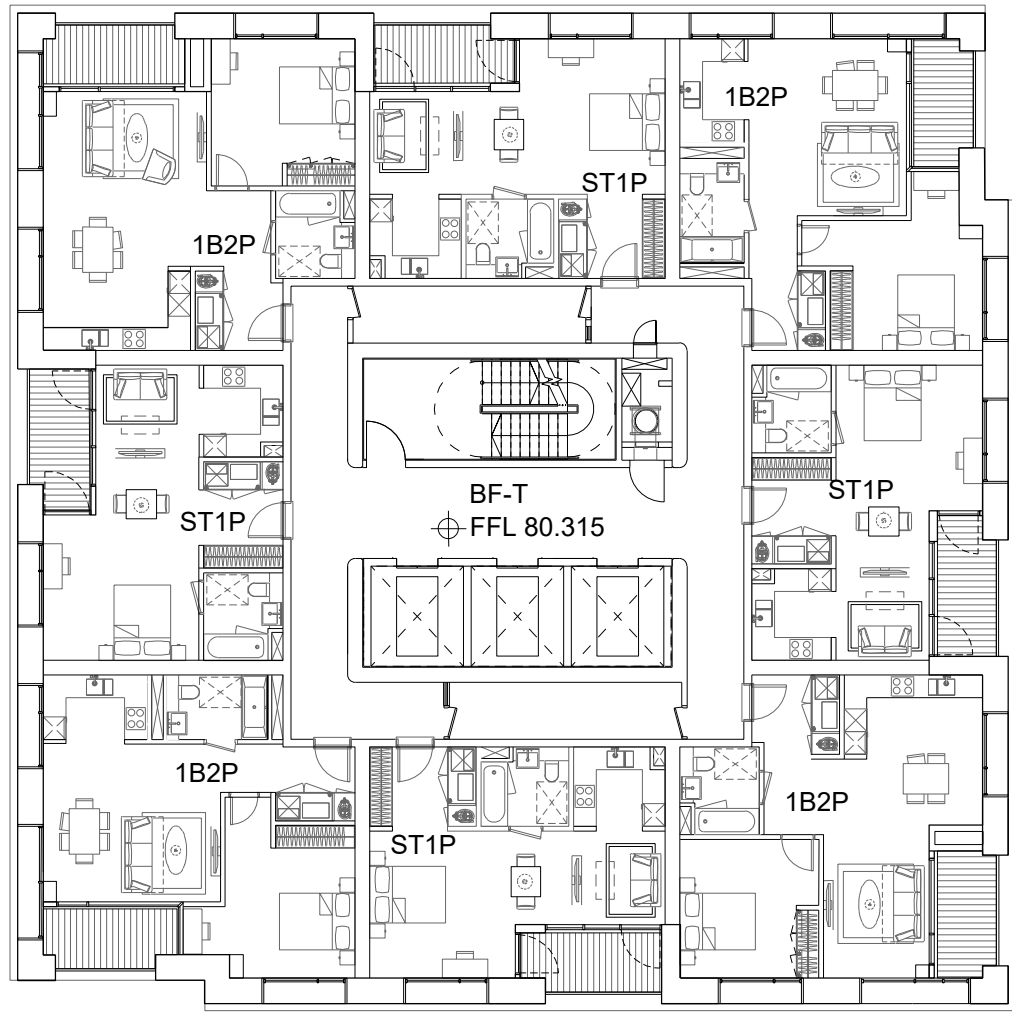
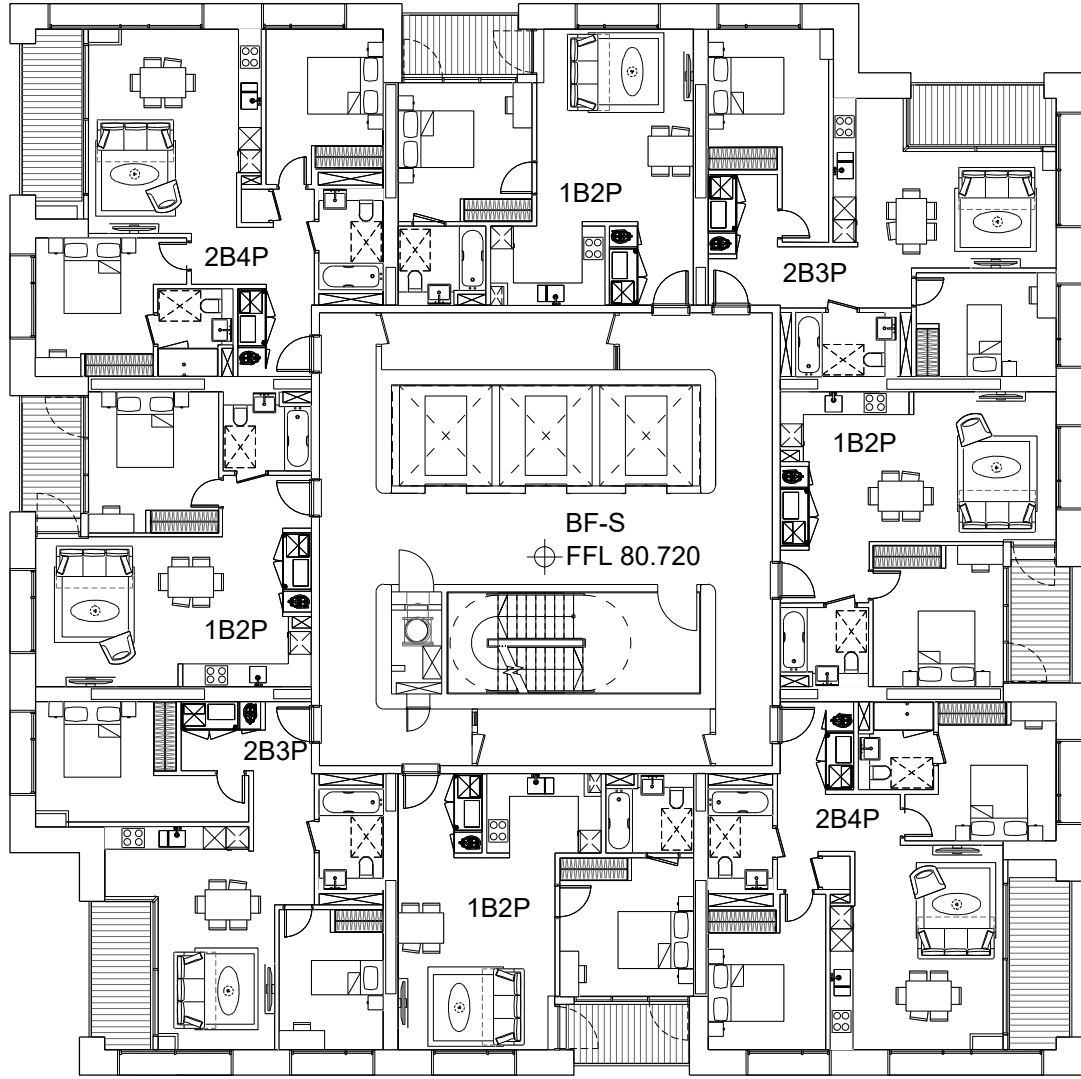


Filename: H:\2607\_Project\Sunbeam\Drawings\CAD\Sheet\2607-KPF-BF04-23-DR-PLN-A-0124.dwg Plotted by: Ascioglu, Bekir Plot Time: 9/11/2019 4:27 PM

1

BF-RS&T  
LEVEL 23 FLOOR PLAN

SCALE: 1:200 @ A1



# KPF

**Client**  
Southwark GP Nominee 1 Ltd. and  
Southwark GP Nominee 2 Ltd.

**Structural Engineer**  
WSP  
Tel: 020 7337 1700

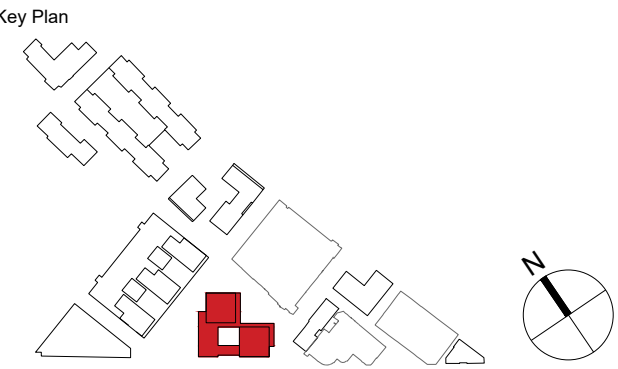
**MEP Engineer**  
Hilson Moran  
Tel: 020 7940 8888

**Landscape Consultant (Strategy)**  
Arup  
Tel: 020 7636 1531

**Landscape Consultant (Design)**  
Andy Sturgeon  
Tel: 012 7367 2575

**Structural Engineer (Building F)**  
AKT II  
Tel: 020 7250 7777

C	AMENDED PROPOSALS	16.09.19
B	ADDENDUM	04.06.18
A	ADDENDUM	19.01.18
No.	Issue	Check Date



**Kohn Pedersen Fox Associates  
(International) PA**  
Architects and Planning Consultants

7a Langley Street  
London WC2H 9JA  
England  
T: +44 (0) 20 3119 5300  
F: +44 (0) 20 7497 1175  
<http://www.kpf.com>

Proj. No. 2607 Project  
Scale 1:200 @ A1 Drawn by Checked by

Drawing Title and No.  
BF-RS&T  
LEVEL 23 FLOOR PLAN  
PROPOSED

Drawing Ref. 2607-KPF-BF04-23-DR-PLN-  
A-0124 Rev.  
C