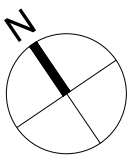
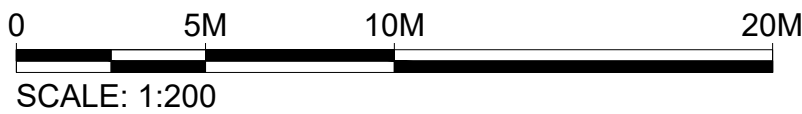
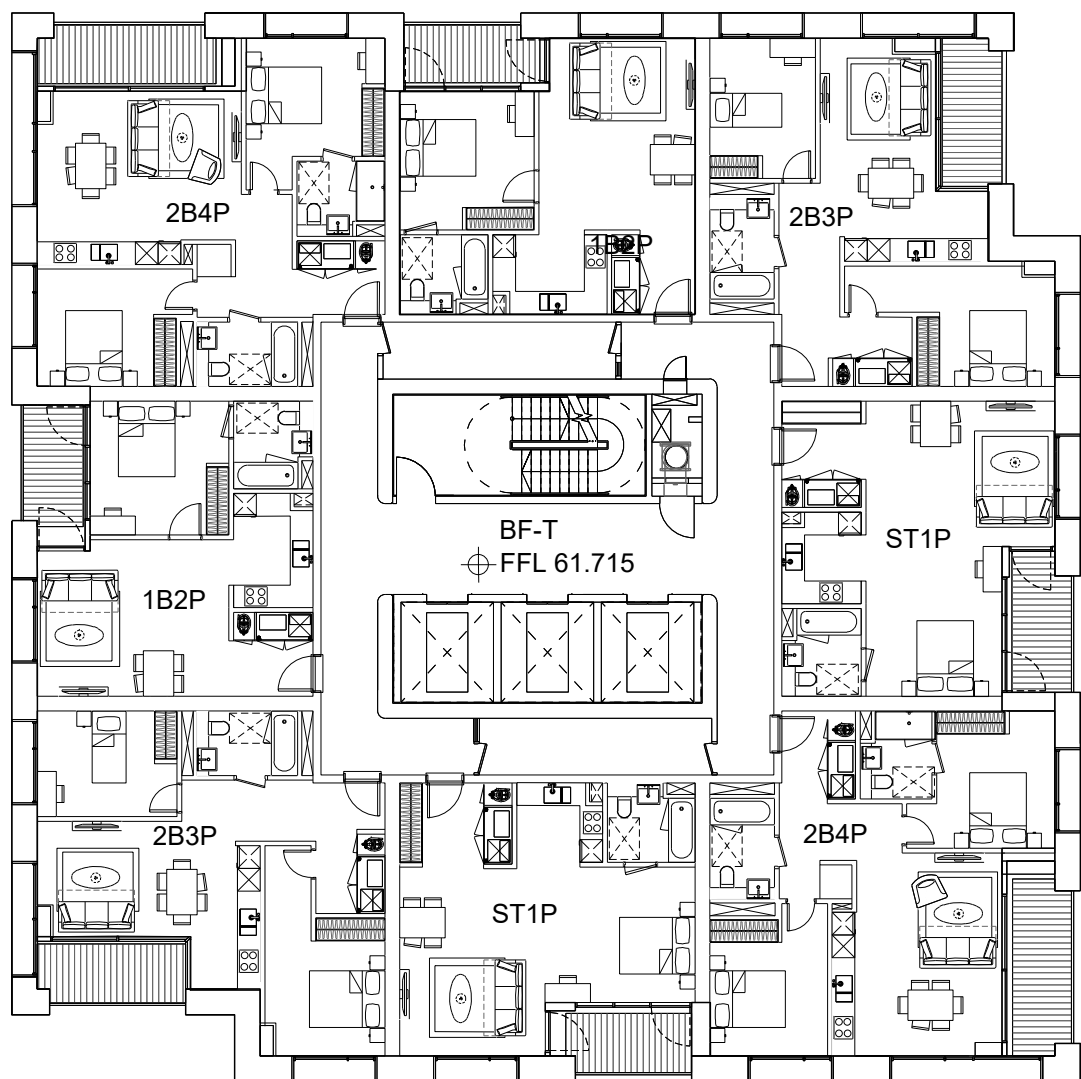
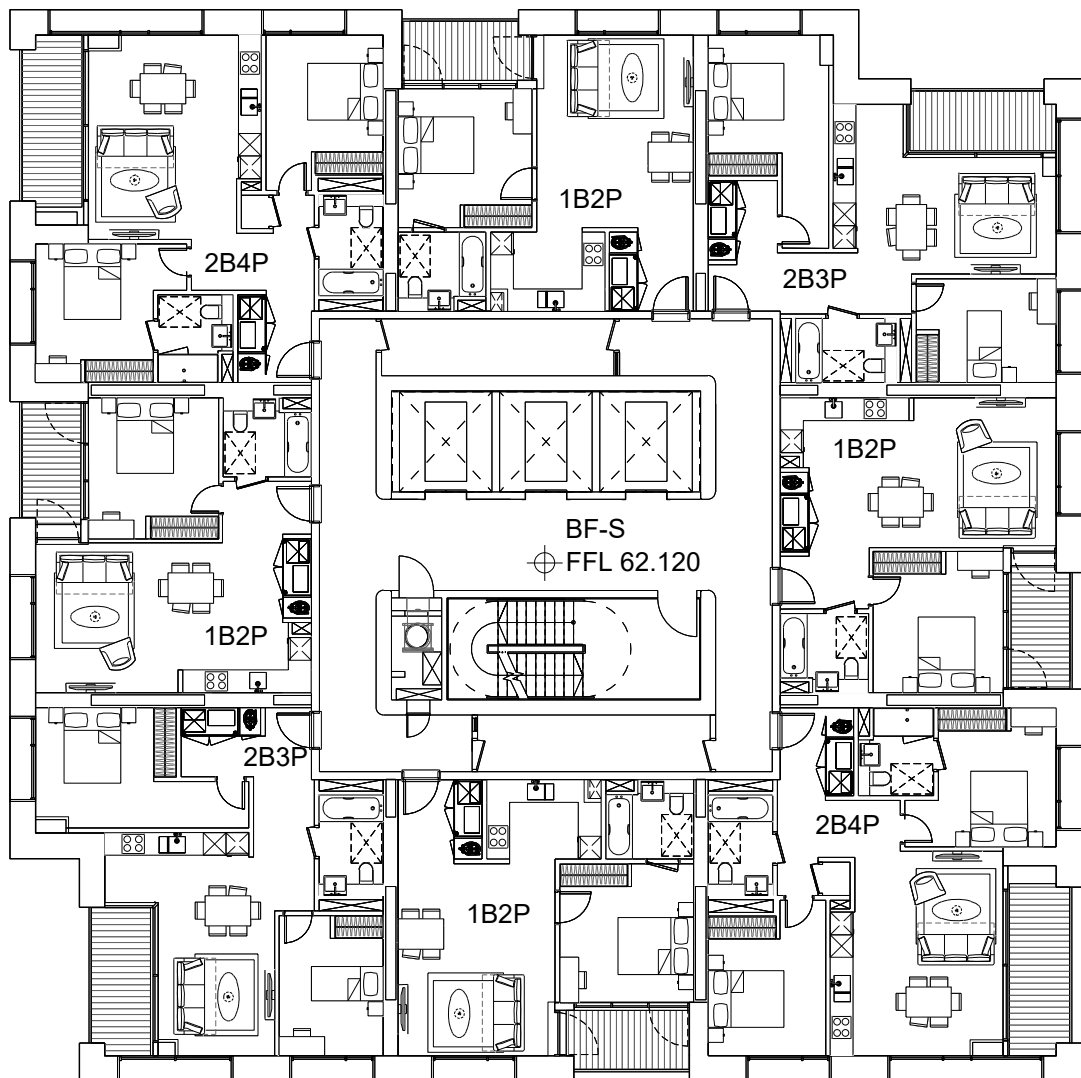


Filename: H:\2607_Project\Sunbeam\Drawings\CAD\Sheet\2607-KPF-BF04-17-DR-PLN-A-0118.dwg Plotted by: Ascioglu, Bekir Plot Time: 9/11/2019 4:26 PM

1

BF-RS&T
LEVEL 17 FLOOR PLAN

SCALE: 1:200 @ A1



KPF

Client
Southwark GP Nominee 1 Ltd. and
Southwark GP Nominee 2 Ltd.

Structural Engineer
WSP
Tel: 020 7337 1700

MEP Engineer
Hilson Moran
Tel: 020 7940 8888

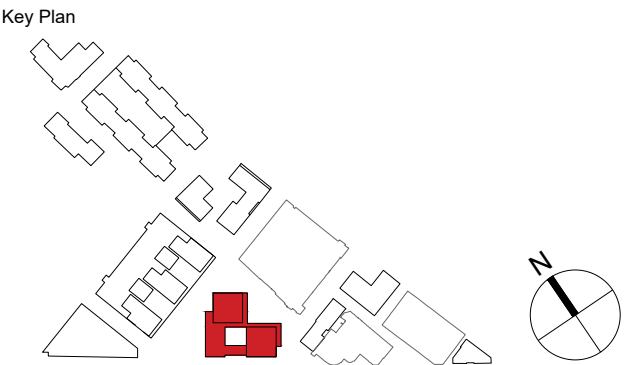
Landscape Consultant (Strategy)
Arup
Tel: 020 7636 1531

Landscape Consultant (Design)
Andy Sturgeon
Tel: 012 7367 2575

Structural Engineer (Building F)
AKT II
Tel: 020 7250 7777

C	AMENDED PROPOSALS	16.09.19
B	ADDENDUM	04.06.18
A	ADDENDUM	19.01.18

No. Issue Check Date



**Kohn Pedersen Fox Associates
(International) PA**
Architects and Planning Consultants

7a Langley Street
London WC2H 9JA
England
T: +44 (0) 20 3119 5300
F: +44 (0) 20 7497 1175
<http://www.kpf.com>

Proj. No. Project
2607 Bermondsey Project

Scale Drawn by Checked by
1:200 @ A1 YN

Drawing Title and No.
BF-RS&T
LEVEL 17 FLOOR PLAN
PROPOSED

Drawing Ref. Rev.
2607-KPF-BF04-17-DR-PLN-

A-0118 **C**