

Client
Southwark GP Nominee 1 Ltd. and
Southwark GP Nominee 2 Ltd.

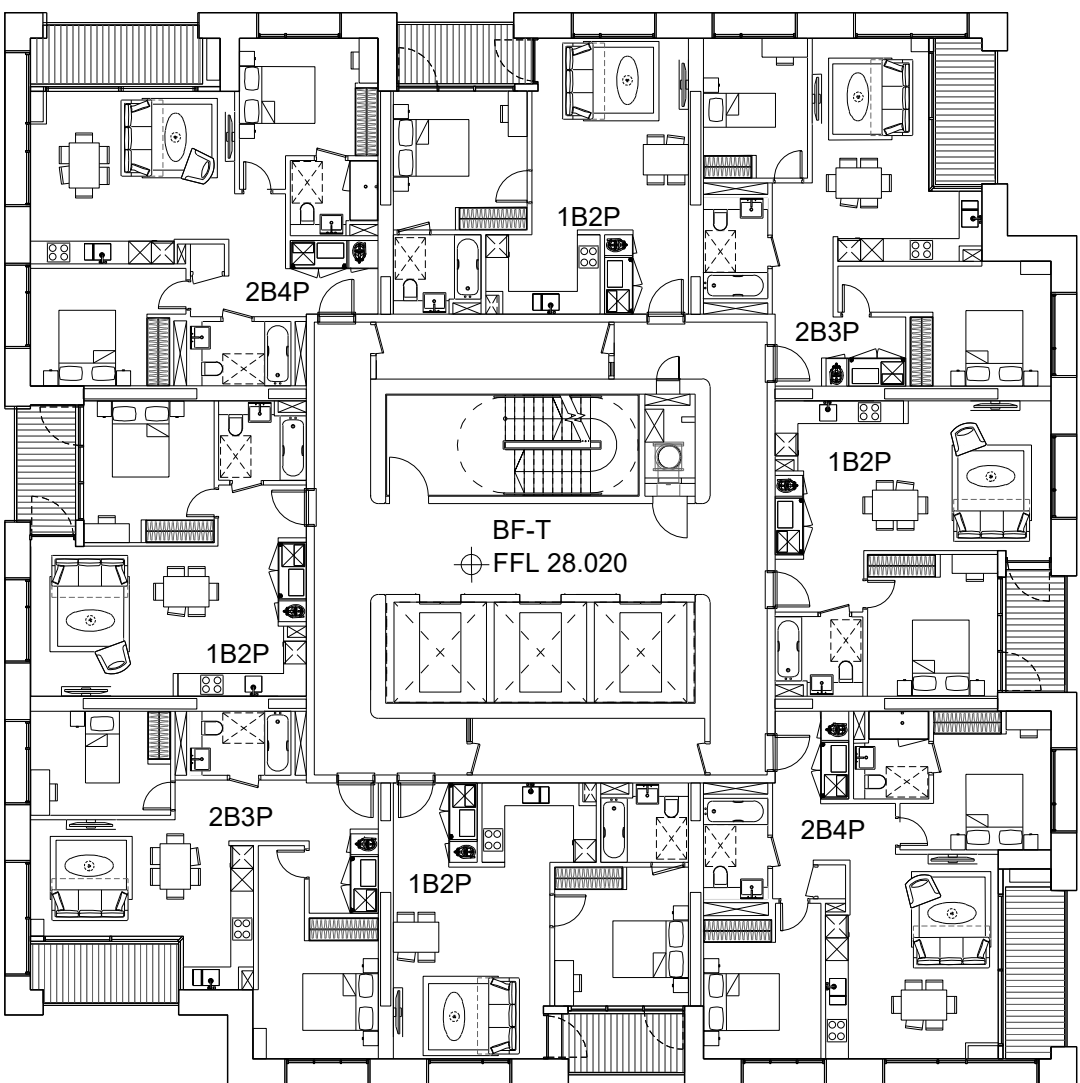
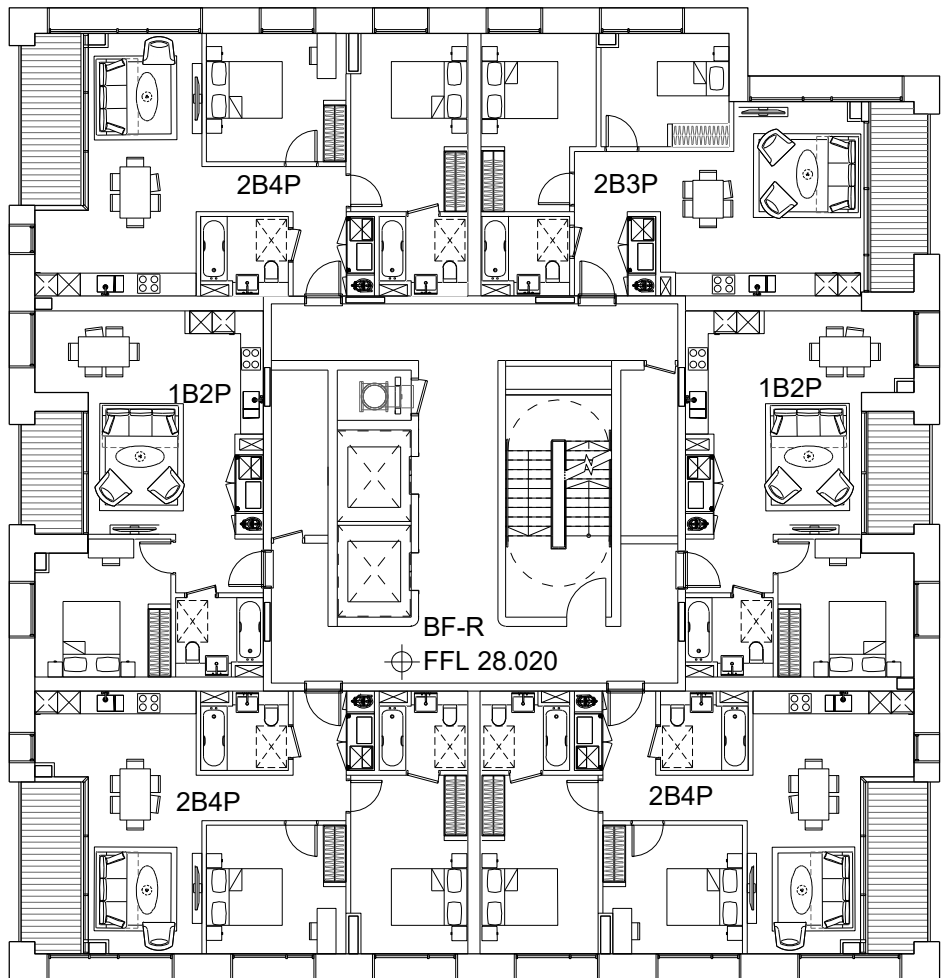
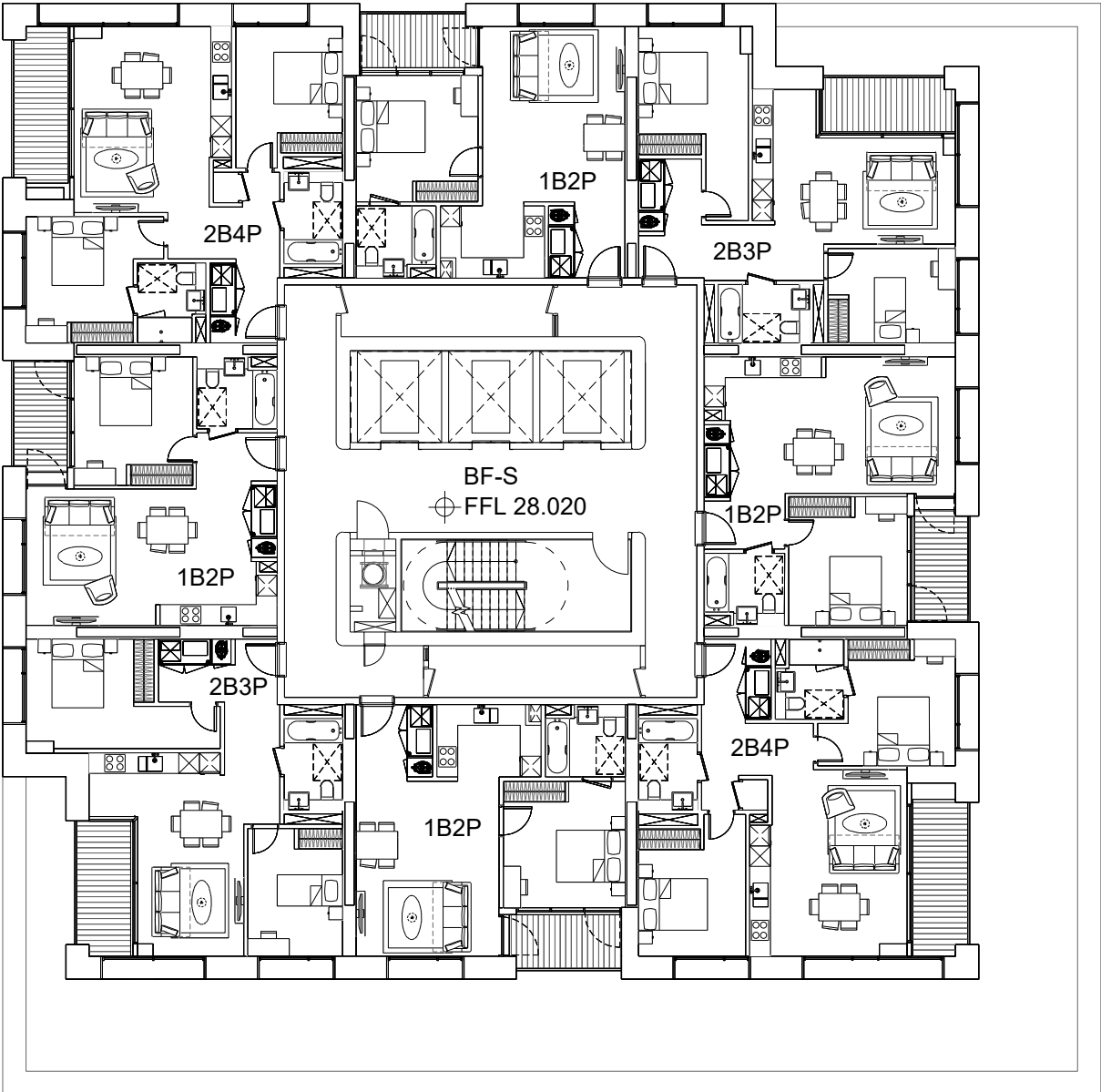
Structural Engineer
WSP
Tel: 020 7337 1700

MEP Engineer
Hilson Moran
Tel: 020 7940 8888

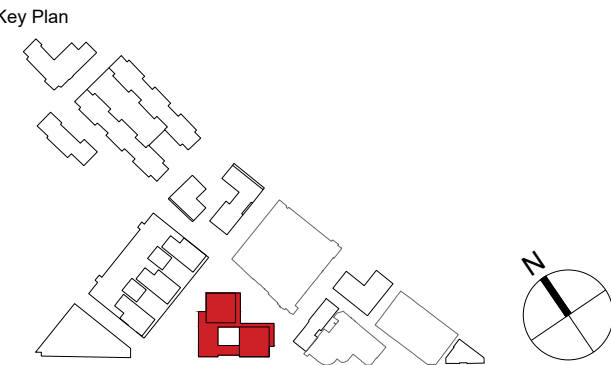
Landscape Consultant (Strategy)
Arup
Tel: 020 7636 1531

Landscape Consultant (Design)
Andy Sturgeon
Tel: 012 7367 2575

Structural Engineer (Building F)
AKT II
Tel: 020 7250 7777



C	AMENDED PROPOSALS	16.09.19	
B	ADDENDUM	04.06.18	
A	ADDENDUM	19.01.18	
No.	Issue	Check	Date



**Kohn Pedersen Fox Associates
(International) PA**
Architects and Planning Consultants

7a Langley Street
London WC2H 9JA
England
T: +44 (0) 20 3119 5300
F: +44 (0) 20 7497 1175
<http://www.kpf.com>

Proj. No. 2607 Project Bermondsey Project

Scale 1:200 @ A1 Drawn by YN Checked by

Drawing Title and No.
BF-RS&T
LEVEL 06-08 FLOOR PLAN
PROPOSED

Drawing Ref. 2607-KPF-BF04-06-DR-PLN- A-0107 Rev. C

BF-RS&T
LEVEL 06-08 PLAN
SCALE: 1:200 @ A1

