

**Structural Engineer**  
WSP  
Tel: 020 7337 1700

**MEP Engineer**  
Hilson Moran  
Tel: 020 7940 8888

**Landscape Consultant (Strategy)**  
Arup  
Tel: 020 7636 1531

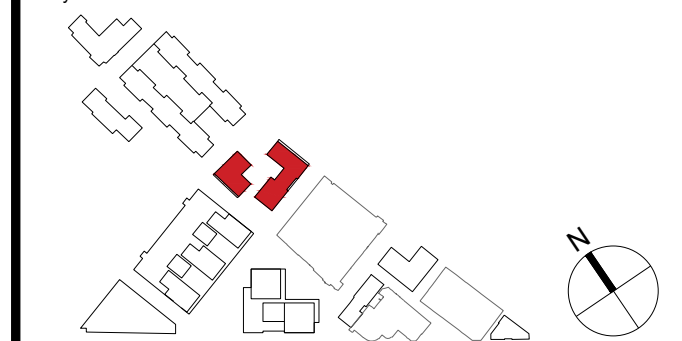
**Landscape Consultant (Design)**  
Andy Sturgeon  
Tel: 012 7367 2575

**Structural Engineer (Building F)**  
AKT II  
Tel: 020 7250 7777

NOTE: THE DETAILED DESIGN OF THE RESIDENT'S COMMUNAL TERRACES ARE SHOWN FOR ILLUSTRATIVE PURPOSES ONLY

C	AMENDED PROPOSALS	16.09.19
B	ADDENDUM	04.06.18
A	ADDENDUM	19.01.18

### Key Plan



**Kohn Pedersen Fox Associates  
(International) PA**  
Architects and Planning Consultants

7a Langley Street  
London WC2H 9JA  
England  
T: +44 (0) 20 3119 5300  
F: +44 (0) 20 7497 1175  
<http://www.kpf.com>

Proj. No.	Project
2607	Bermondsey Project

Scale: 1:200 @ A1      Drawn by: CG      Checked by:

Drawing Title and No.  
BF-OP&Q  
LEVEL 07 FLOOR PLAN  
PROPOSED

Drawing Ref. 2607-KPF-BF03-07-DR-PLN-  
**A-0107**

Rev. **C**

© 2018 KOHN PEDERSEN FOX ASSOCIATES (INTERNATIONAL) PA. All rights reserved.  
Where drawing contains Ordnance Survey data © Crown Copyright. Licence no. 10001998.

