

Client
Southwark GP Nominee 1 Ltd. and
Southwark GP Nominee 2 Ltd.

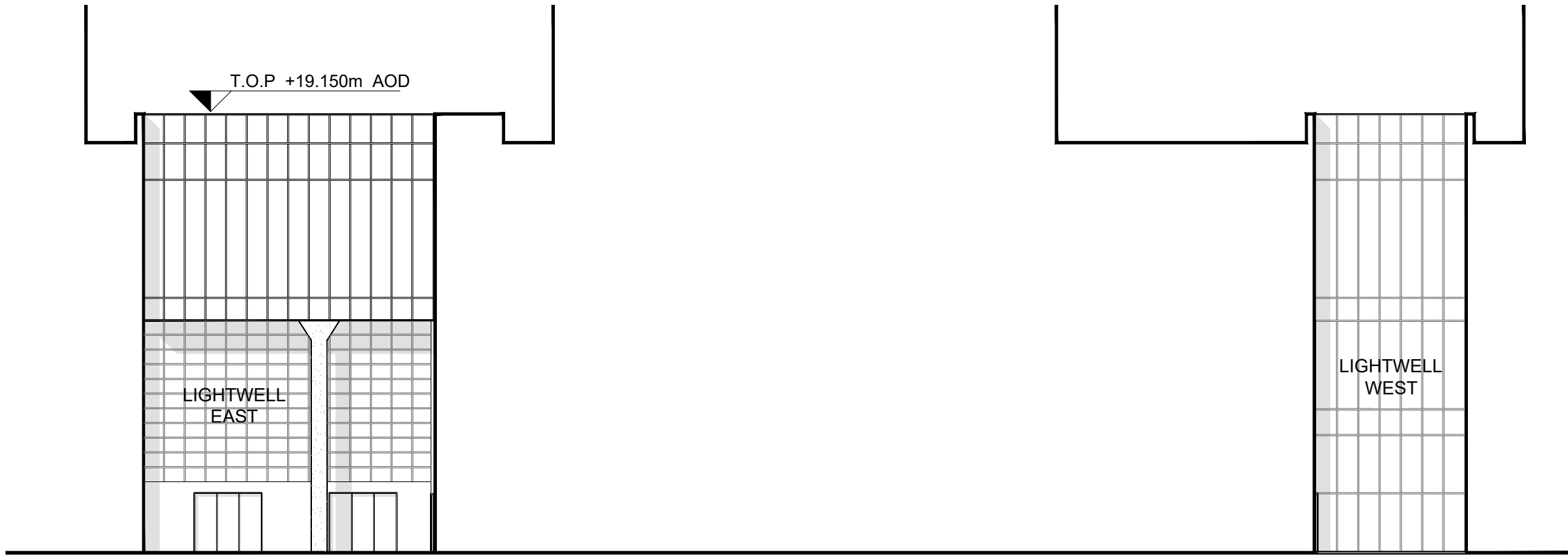
Structural Engineer
WSP
Tel: 020 7337 1700

MEP Engineer
Hilson Moran
Tel: 020 7940 8888

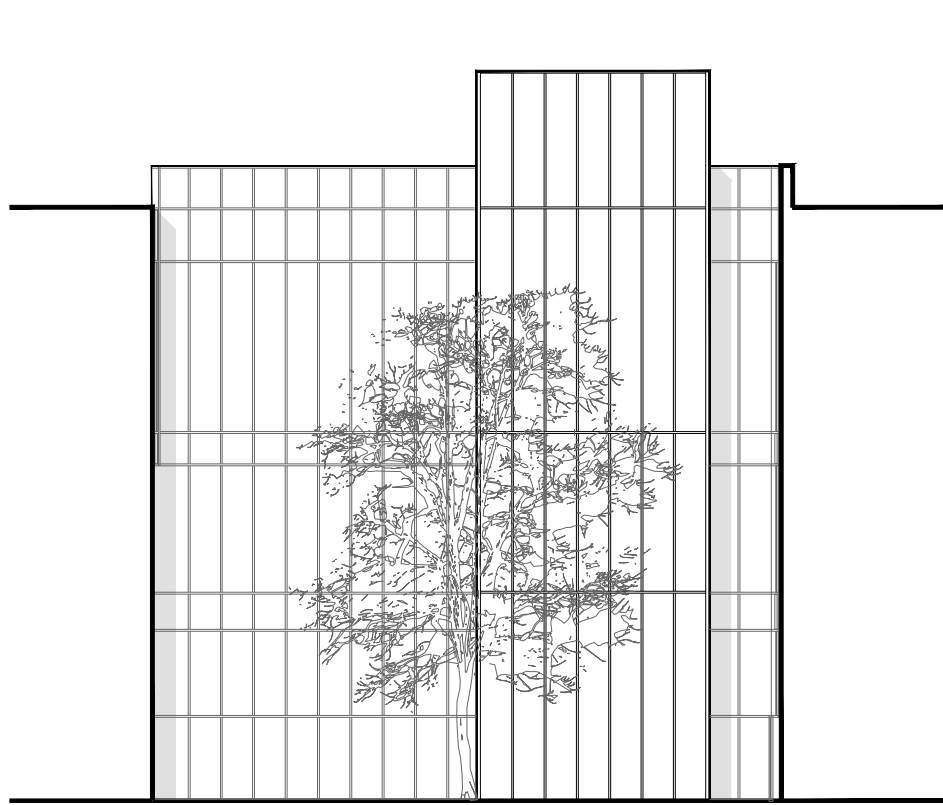
Landscape Consultant (Strategy)
Arup
Tel: 020 7636 1531

Landscape Consultant (Design)
Andy Sturgeon
Tel: 012 7367 2575

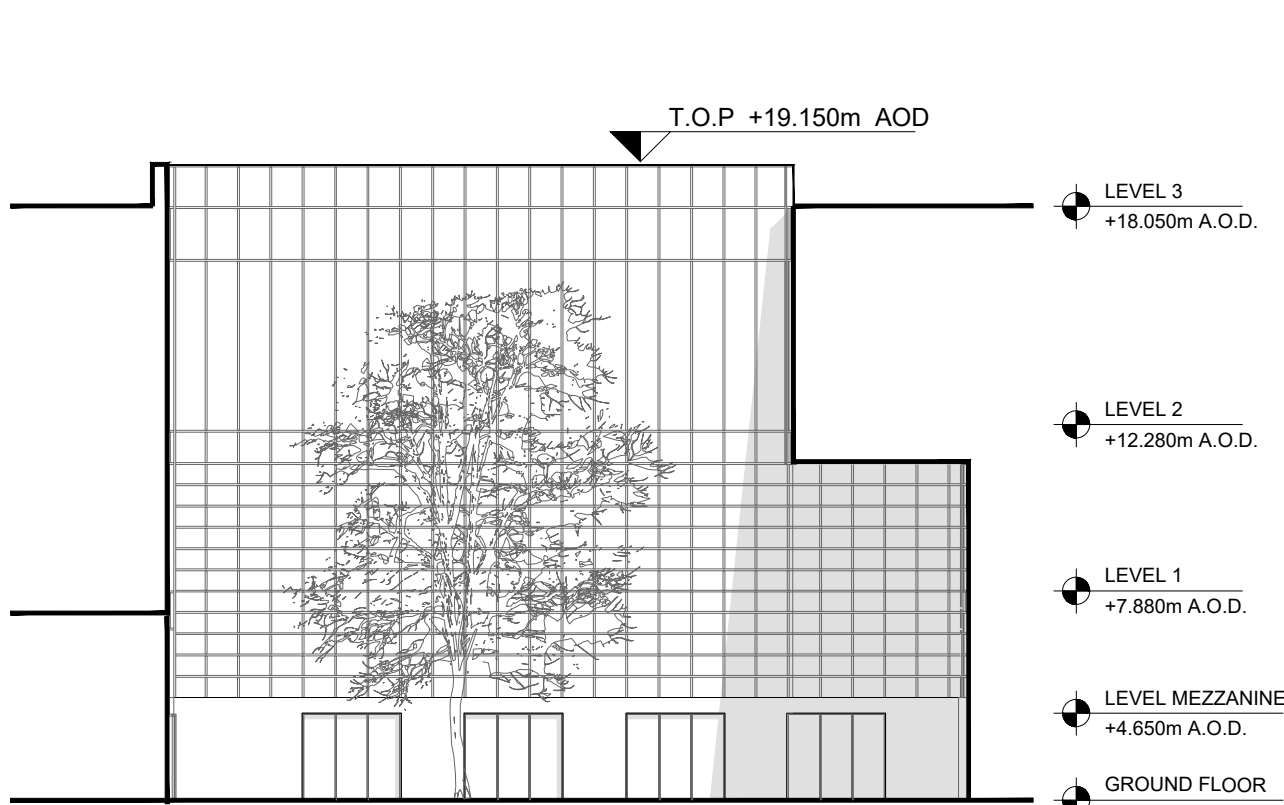
Structural Engineer (Building F)
AKT II
Tel: 020 7250 7777



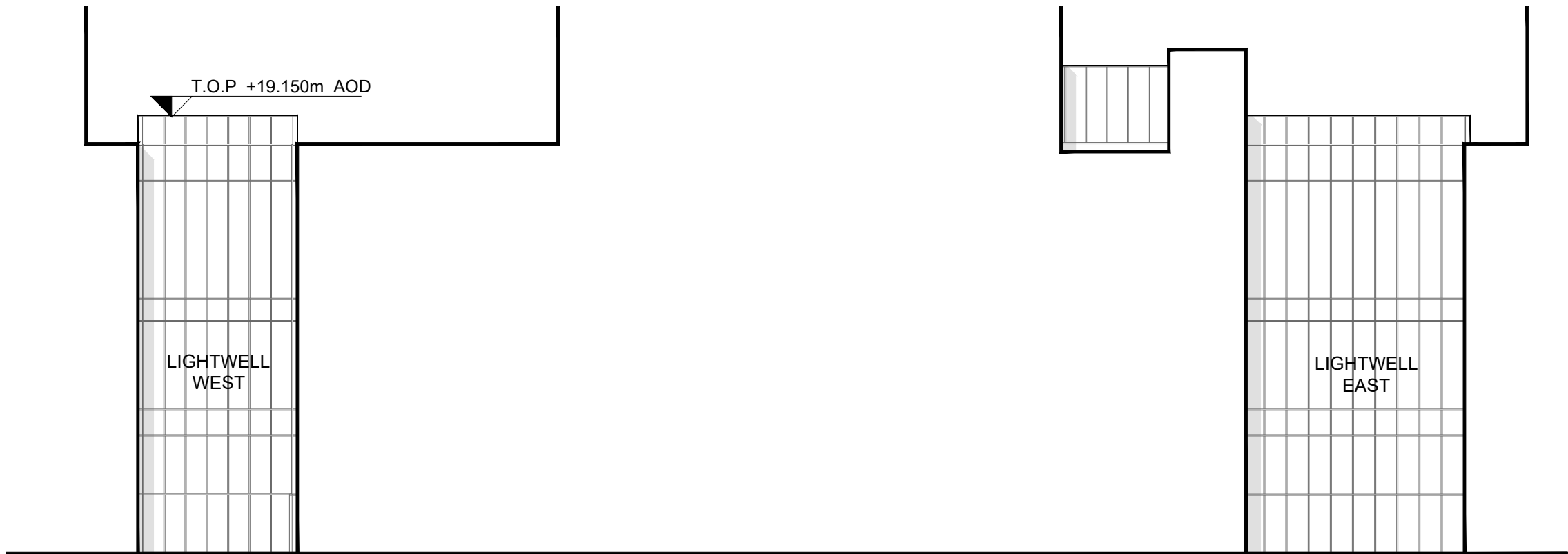
1 **BF-F LIGHTWELL EAST/WEST - SOUTH ELEVATION**
SCALE: 1:200 @ A1



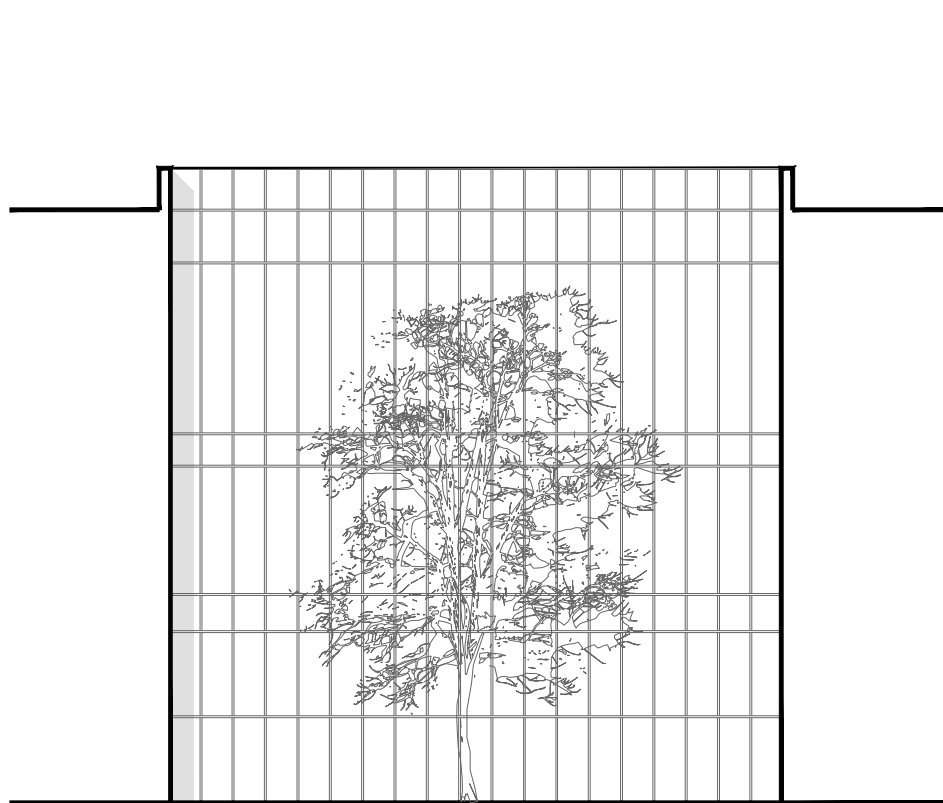
2 **BF-F LIGHTWELL EAST - WEST ELEVATION**
SCALE: 1:200 @ A1



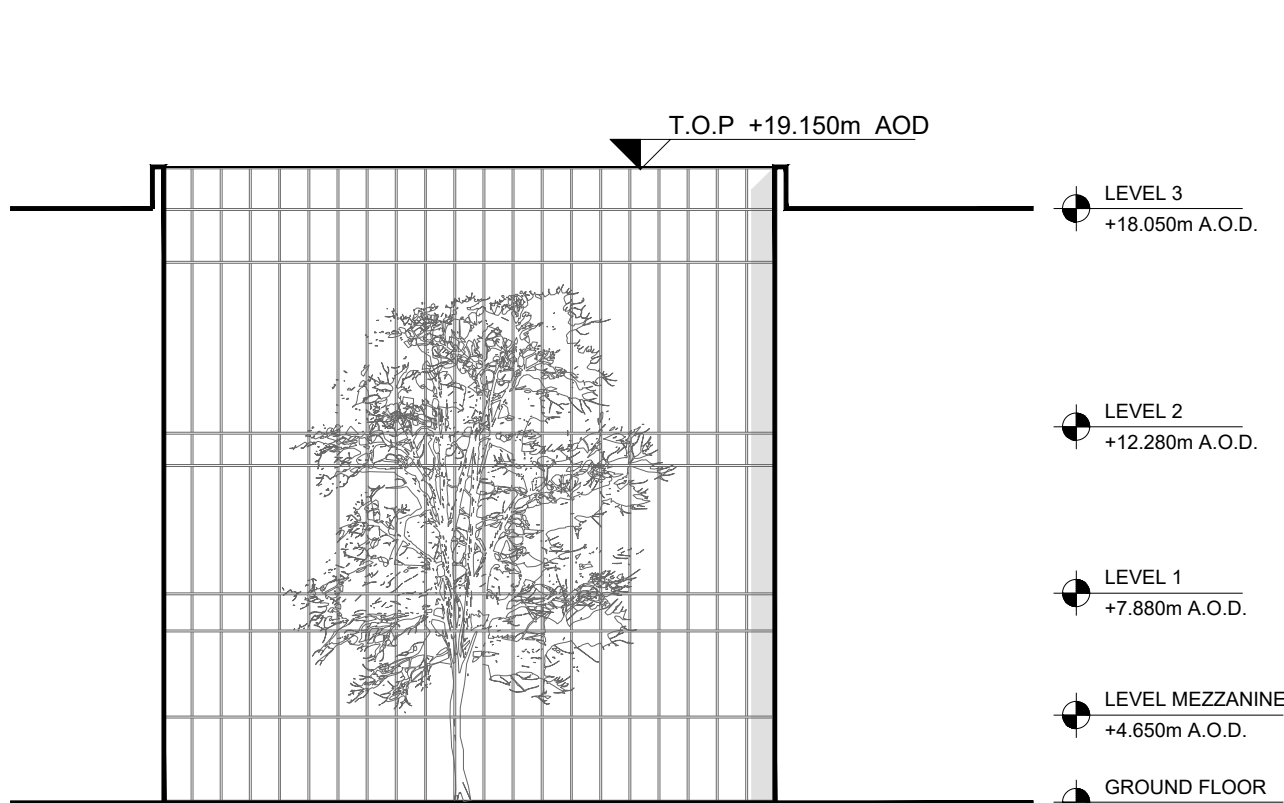
3 **BF-F LIGHTWELL EAST - EAST ELEVATION**
SCALE: 1:200 @ A1



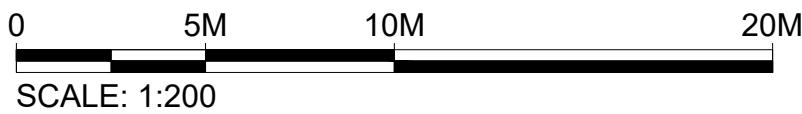
4 **BF-F LIGHTWELL EAST/WEST - NORTH ELEVATION**
SCALE: 1:200 @ A1



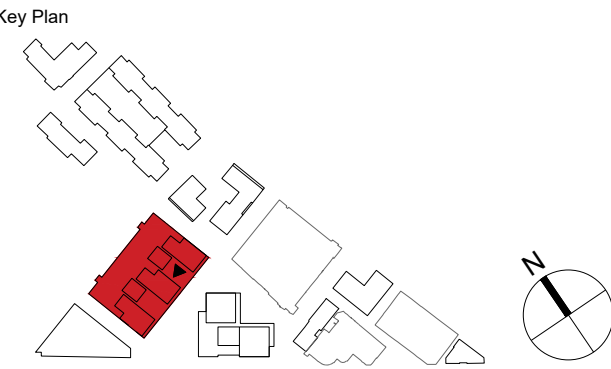
5 **BF-F LIGHTWELL WEST - WEST ELEVATION**
SCALE: 1:200 @ A1



6 **BF-F LIGHTWELL WEST - EAST ELEVATION**
SCALE: 1:200 @ A1



A AMENDED PROPOSALS		16.09.19	
No.	Issue	Check	Date



Kohn Pedersen Fox Associates (International) PA
Architects and Planning Consultants
7a Langley Street
London WC2H 9JA
England
T: +44 (0) 20 3119 5300
F: +44 (0) 20 7497 1175
<http://www.kpf.com>

Proj. No. 2607 Project Bermondsey Project

Scale 1:200 @ A1 Drawn by AH Checked by

Drawing Title and No.
BF-F
LIGHTWELL ELEVATIONS
PROPOSED

Drawing Ref. 2607-KPF-BF02-XX-DR-ELE-
A-0207 Rev. A