

Client
Southwark GP Nominee 1 Ltd. and
Southwark GP Nominee 2 Ltd.

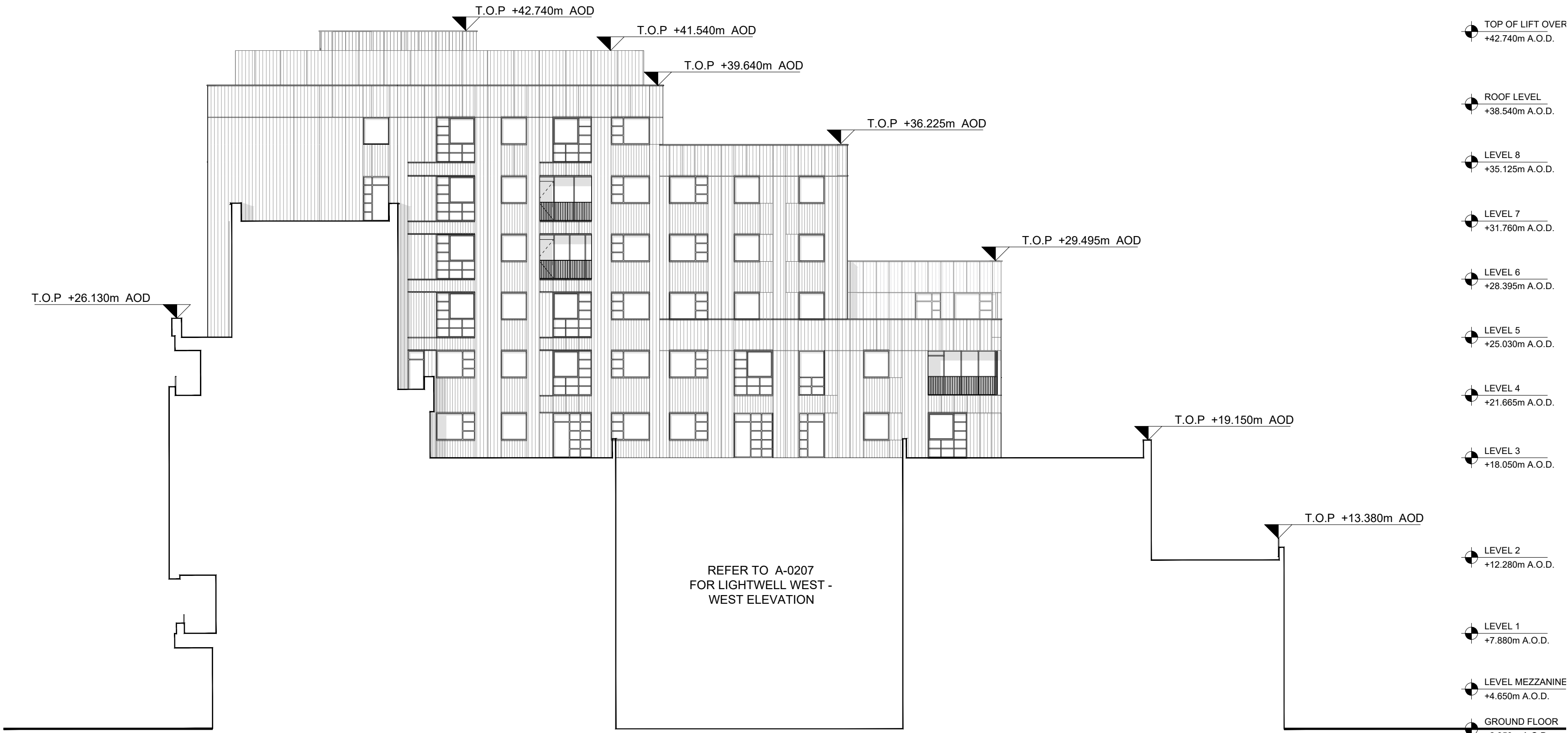
Structural Engineer
WSP
Tel: 020 7337 1700

MEP Engineer
Hilson Moran
Tel: 020 7940 8888

Landscape Consultant (Strategy)
Arup
Tel: 020 7636 1531

Landscape Consultant (Design)
Andy Sturgeon
Tel: 012 7367 2575

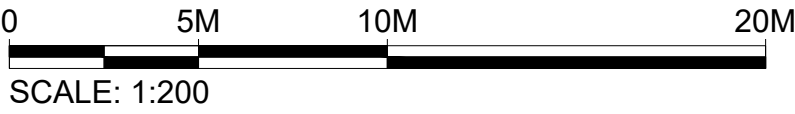
Structural Engineer (Building F)
AKT II
Tel: 020 7250 7777



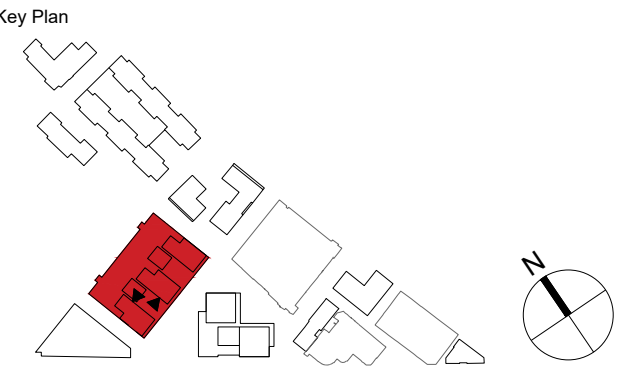
1
BF-F
LIGHTWELL WEST - NORTHEAST COURTYARD ELEVATION
SCALE: 1:200 @ A1



2
BF-F
LIGHTWELL WEST - SOUTHWEST COURTYARD ELEVATION
SCALE: 1:200 @ A1



A AMENDED PROPOSALS		16.09.19
No.	Issue	Check Date



Kohn Pedersen Fox Associates (International) PA
Architects and Planning Consultants

7a Langley Street
London WC2H 9JA
England
T: +44 (0) 20 3119 5300
F: +44 (0) 20 7497 1175
<http://www.kpf.com>

Proj. No. 2607 Project
2607 Bermondsey Project

Scale 1:200 @ A1 Drawn by AH Checked by

Drawing Title and No.
BF-F
COURTYARD ELEVATIONS 1
PROPOSED

Drawing Ref. 2607-KPF-BF02-XX-DR-ELE- Rev.

A-0205 A