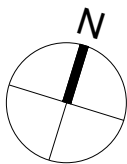
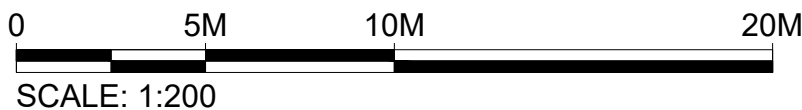
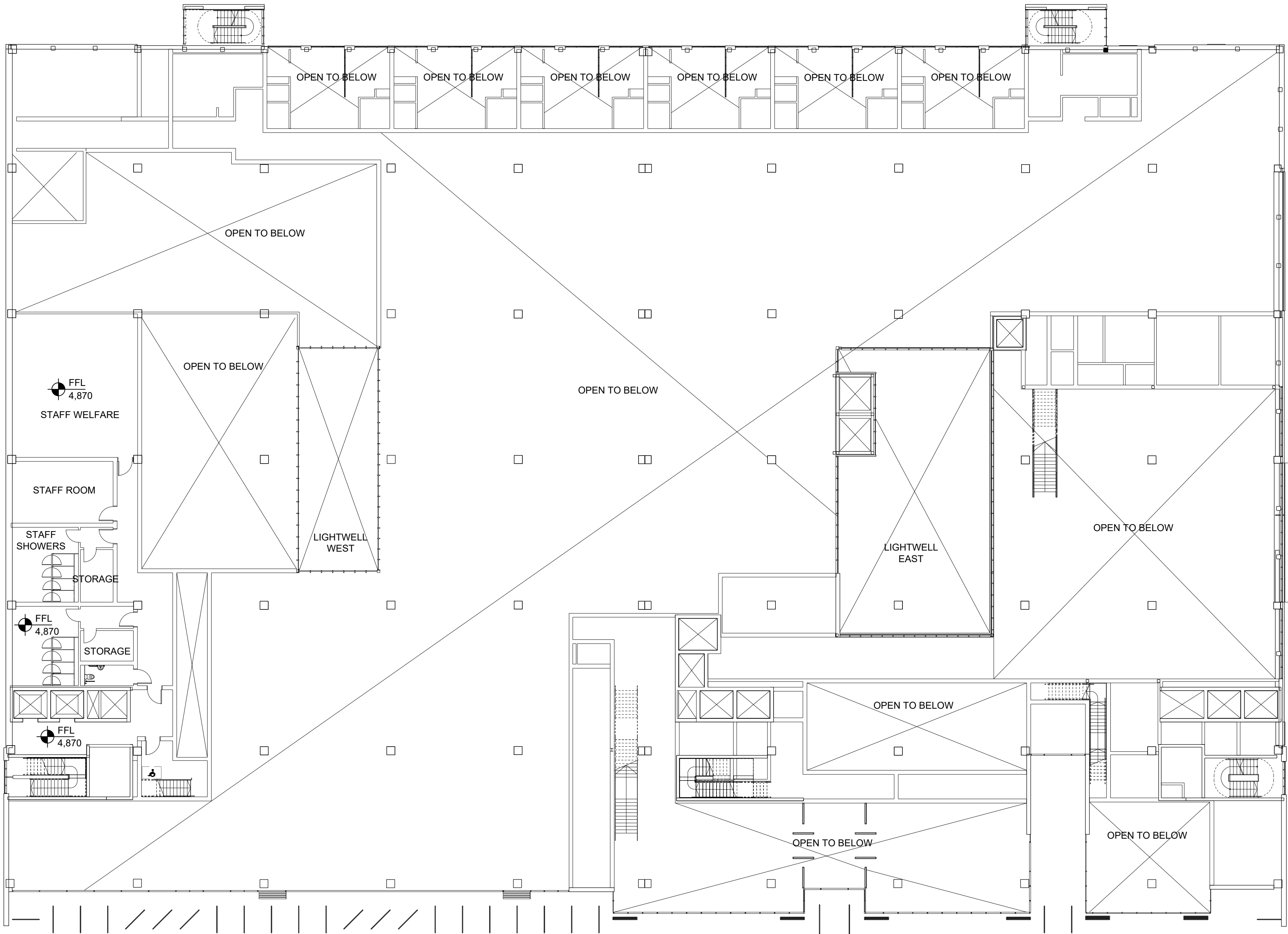


Filename: H:\2607_Project\Sunbeam\Drawings\CAD\Sheet\2607-KPF-BF02-0M-DR-PLN-A-0101.dwg Plotted by: Ascoglu, Bekir Plot Time: 9/11/2019 5:13 PM

1

BF-F
MEZZANINE PLAN
SCALE: 1:200 @ A1



KPF

Client
Southwark GP Nominee 1 Ltd. and
Southwark GP Nominee 2 Ltd.

Structural Engineer
WSP
Tel: 020 7337 1700

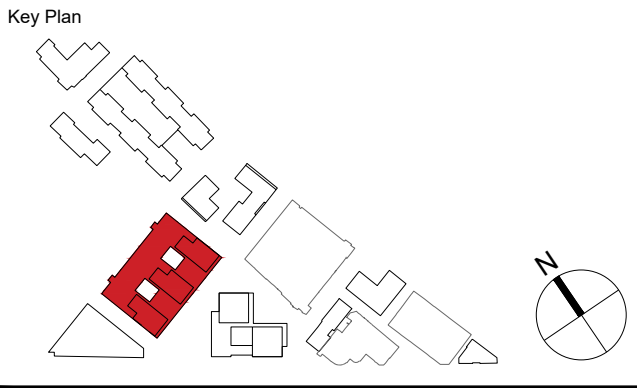
MEP Engineer
Hilson Moran
Tel: 020 7940 8888

Landscape Consultant (Strategy)
Arup
Tel: 020 7636 1531

Landscape Consultant (Design)
Andy Sturgeon
Tel: 012 7367 2575

Structural Engineer (Building F)
AKT II
Tel: 020 7250 7777

A AMENDED PROPOSALS		16.09.19	
No.	Issue	Check	Date



**Kohn Pedersen Fox Associates
(International) PA**
Architects and Planning Consultants

7a Langley Street
London WC2H 9JA
England
T: +44 (0) 20 3119 5300
F: +44 (0) 20 7497 1175
<http://www.kpf.com>

Proj. No. Project
2607 Bermondsey Project

Scale	Drawn by	Checked by
1:200 @ A1	AH	

Drawing Title and No.
BF-F
MEZZANINE PLAN
PROPOSED

Drawing Ref.	Rev.
2607-KPF-BF02-0M-DR-PLN-	

A-0101 **A**