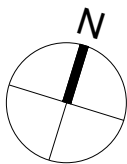
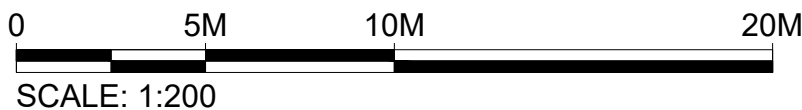
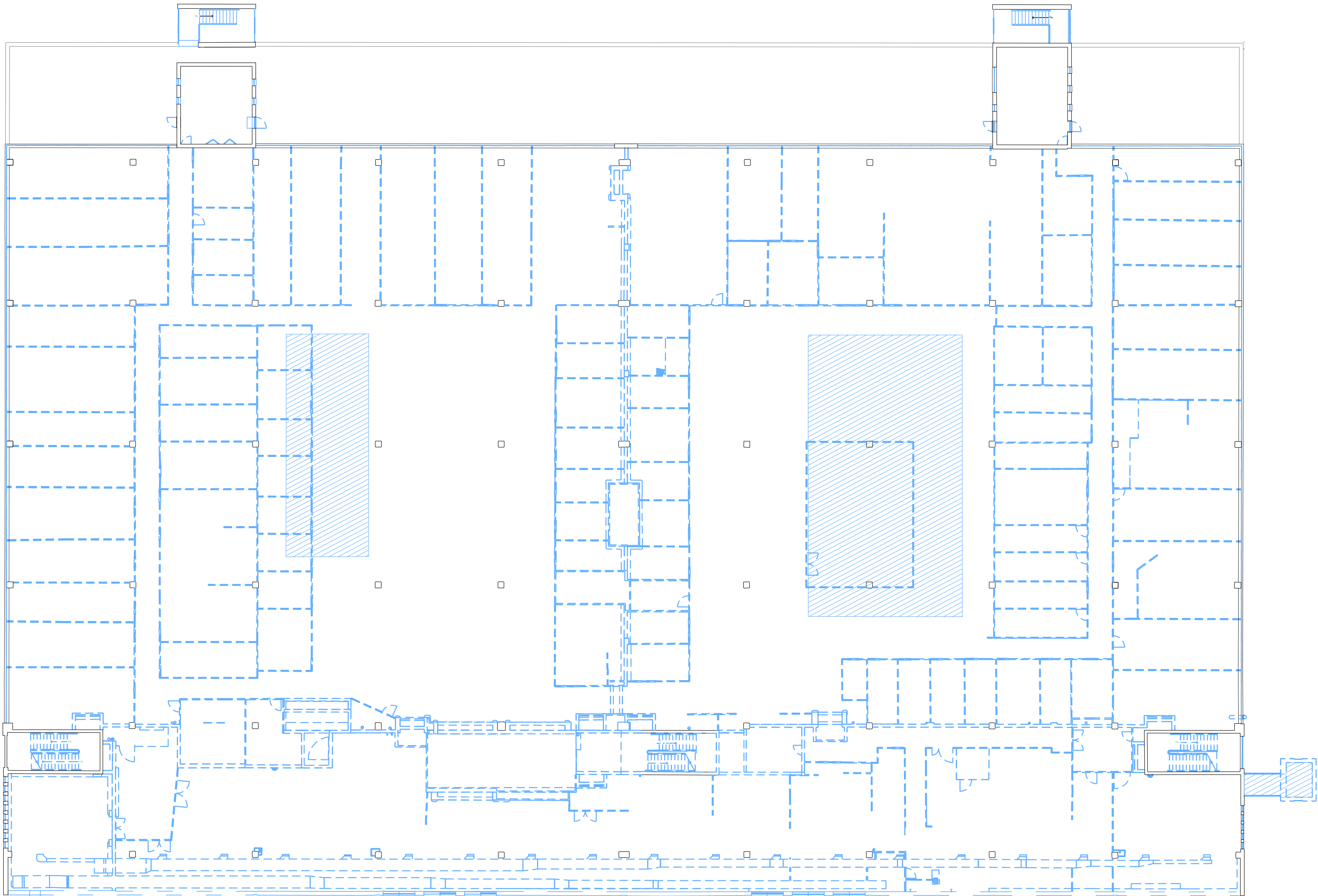


Filename: I:\2607\_Project\Sunbeam\Drawings\CAD\Sheet\2607-KPF-BF02-02-DR-PLN-A-0022.dwg Plotted by: Ascioglu, Bekir Plot Time: 9/11/2019 5:14 PM

1

BF-F  
SECOND FLOOR PLAN - DEMOLITION ILLUSTRATIVE  
SCALE: 1:200 @ A1



# KPF

**Client**

Southwark GP Nominee 1 Ltd. and  
Southwark GP Nominee 2 Ltd.

**Structural Engineer**

WSP  
Tel: 020 7337 1700

**MEP Engineer**

Hilson Moran  
Tel: 020 7940 8888

**Landscape Consultant (Strategy)**

Arup  
Tel: 020 7636 1531

**Landscape Consultant (Design)**

Andy Sturgeon  
Tel: 012 7367 2575

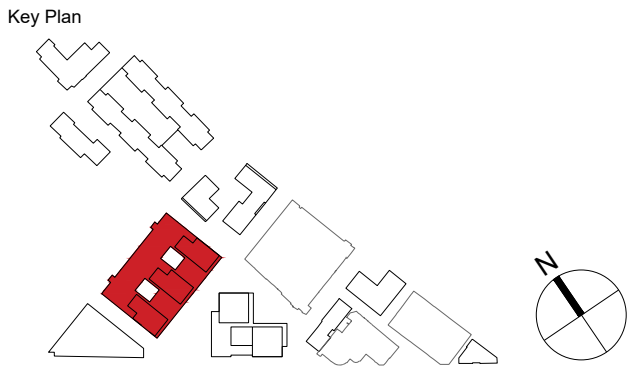
**Structural Engineer (Building F)**

AKT II  
Tel: 020 7250 7777

--- DEMOLITION OF EXISTING  
WALLS

 DEMOLITION OF EXISTING  
FLOOR SLABS

A AMENDED PROPOSALS		16.09.19	
No.	Issue	Check	Date



**Kohn Pedersen Fox Associates  
(International) PA**  
Architects and Planning Consultants

7a Langley Street  
London WC2H 9JA  
England  
T: +44 (0) 20 3119 5300  
F: +44 (0) 20 7497 1175  
<http://www.kpf.com>

Proj. No. 2607 Project **Bermondsey Project**

Scale 1:200 @ A1 Drawn by SC Checked by

Drawing Title and No.

BF-F  
SECOND FLOOR PLAN  
DEMOLITION ILLUSTRATIVE

Drawing Ref. 2607-KPF-BF02-02-DR-PLN-  
**A-0022**

Rev.

**A**