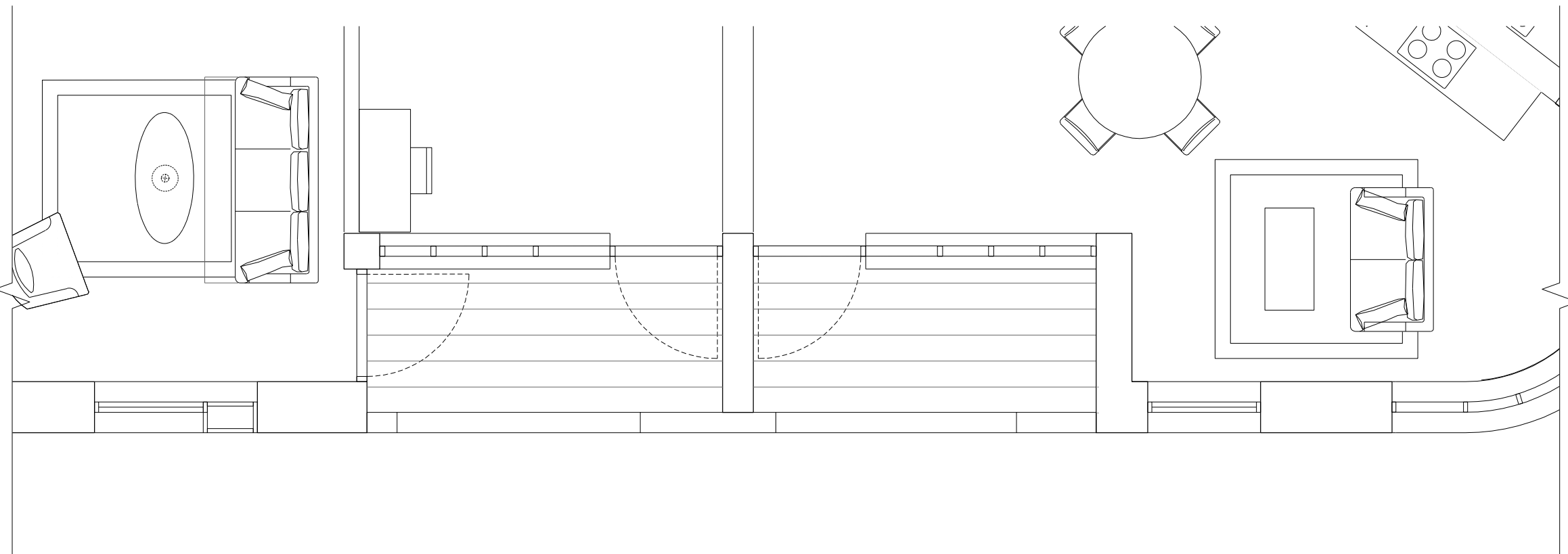


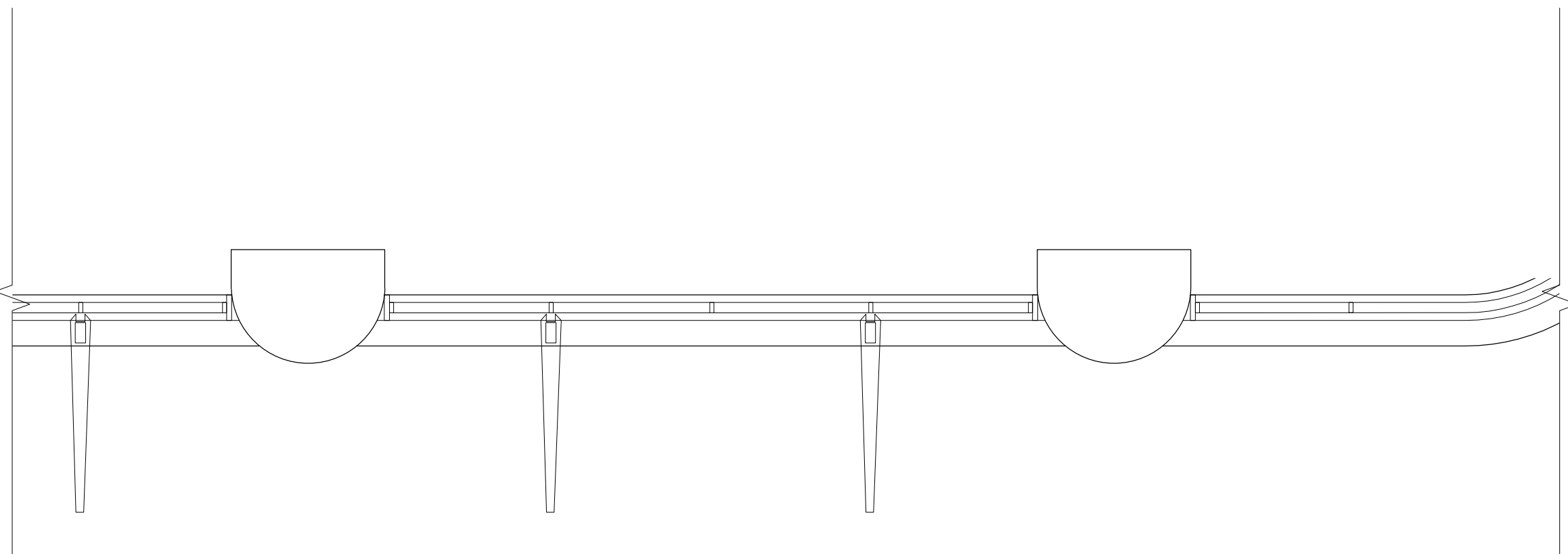
Filename: H:\2607_Project\Bermundsey\Drawings\A0\Sheet\2607-KPF-BF01-XX-DR-DET-A-0301.dwg Plot Time: 9/11/2019 4:53 PM



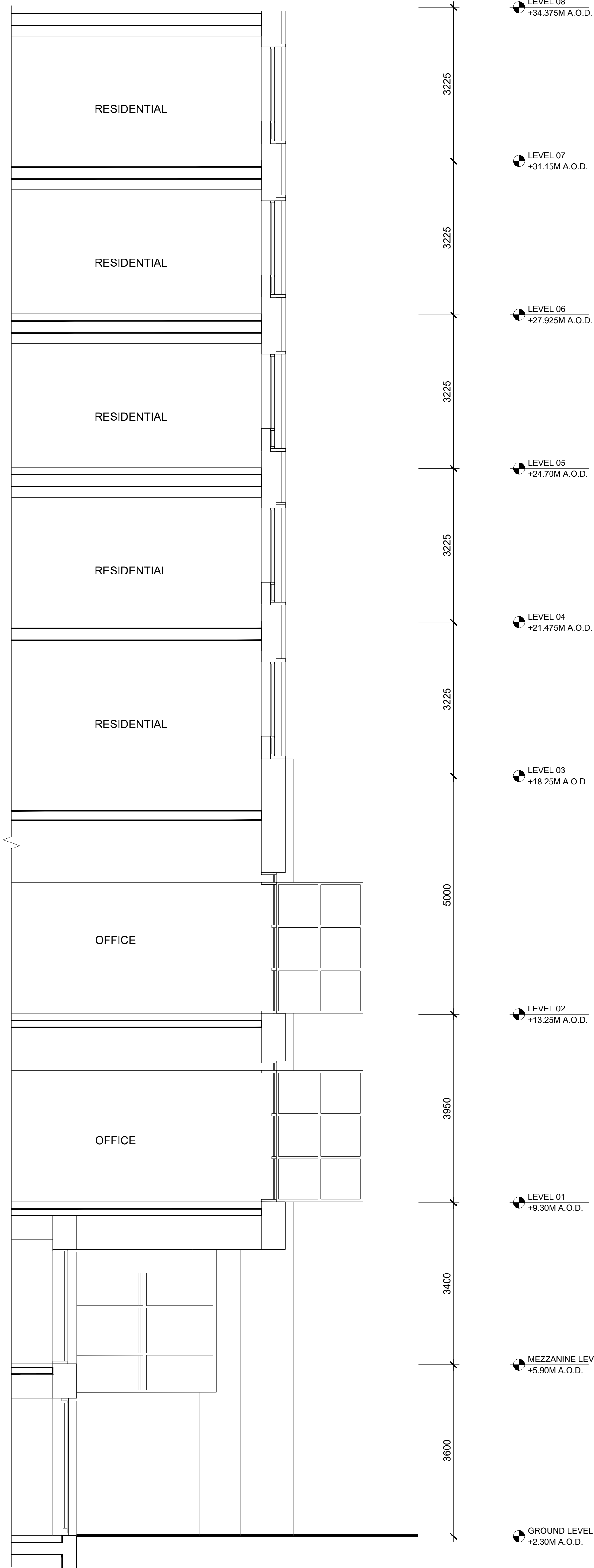
1 BF-D&E ELEVATION
SCALE: 1:50 @ A0



3 BF-D&E LEVEL 8-10 PLAN
SCALE: 1:50 @ A0



4 BF-D&E LEVEL 1 OFFICE PLAN
SCALE: 1:50 @ A0



2 BF-D&E SECTION
SCALE: 1:50 @ A0

KEY TO MATERIALS

CLADDING MATERIALS

1. RECON STONE
2. BRICKWORK
3. COLOURED METAL PANEL
4. TILE
5. BRICK DETAILING
6. RENDER
7. GRC
8. PRECAST LINTEL / SILL
9. PRECAST / MASONRY PLANTERS
10. METAL PLANTERS
11. PAINTED MILD STEEL
31. PROPRIETARY GLASS CHANNEL FRAMING SYSTEM
32. FIBRE CEMENT BOARD
- GLAZING + WINDOW MATERIALS
12. BAY WINDOW ASSEMBLY
13. WINDOW UNIT WITH METAL FRAME
14. GLAZED ENTRANCE ASSEMBLY WITH COLOURED METAL FRAMED DOORS AND INTEGRATED CANOPY
- GLASS CHANNELS
15. METAL FRAMED SHOP WINDOW ASSEMBLY
17. VENTILATION LOUVRE INFILL PANEL
18. BALCONY
34. METAL WINDOW UNIT: TIMBER APPEARANCE
35. METAL PANEL

0 1.25M 2.5M 5M
SCALE: 1:50

BALUSTRADES + DOORS

19. GLASS BALUSTRADE WITH METAL CAP TO MATCH WINDOW FRAMES
20. INDIVIDUAL METAL BALUSTRADE
21. CONTINUOUS METAL BALUSTRADE
22. METAL LOUVERED DOORS TO LOADING BAY/ BASEMENT VEHICLE ENTRANCE
33. GLASS BALUSTRADE WITH CAP TO MATCH WINDOW FRAMES

ROOF + PARAPET MATERIALS

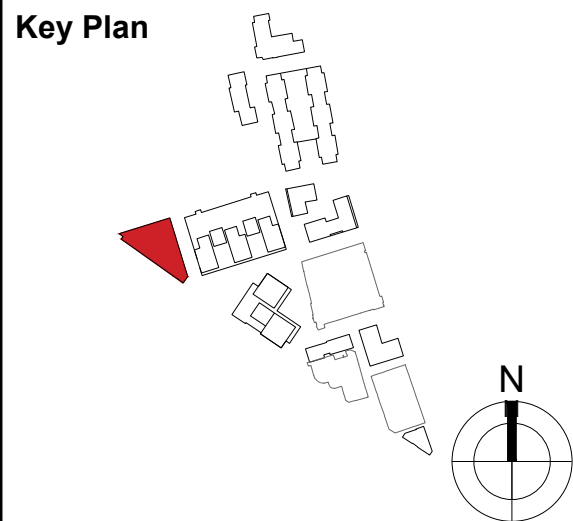
23. RECON STONE/ SUSTAINABLE TIMBER DECKING TO BALCONY/ TERRACE
24. GREEN ROOF
25. PRECAST MASONARY/ BRICK COPING
26. METAL PARAPET/ COPING
27. METAL LOUVRES
28. CONTINUOUS METAL MAINTENANCE RAIL
29. METAL / GRC PLANT SCREEN
30. WIND SCREEN
36. JULIETTE BALCONY

Bermundsey Project

Client
Southwark GP Nominee 1 Ltd. and
Southwark GP Nominee 2 Ltd.

KPF
Kohn Pedersen Fox Associates
(International) PA
Architects and Planning Consultants
7a Langley Street, London WC2H 9JA
T: +44 (0) 20 3119 5300
http://www.kpf.com

Structural Engineer
WSP - Tel: 207 337 1700
MEP Engineer
Hilson Moran - Tel: 207 940 8888
Landscape Consultant (Strategy)
Anup - Tel: 207 636 1531
Landscape Consultant (Design)
Andy Sturgeon - Tel: 127 367 2575
Structural Engineer (Building F)
AKT II - Tel: 207 250 7777



Notes
1. INTERNAL DETAILS SHOWN FOR ILLUSTRATIVE PURPOSES ONLY

Rev.	Description	Date
B	AMENDED PROPOSALS	16.09.19
A	ADDENDUM	19.01.18
1	Issue for Construction	19.01.18

Project
2607 Bermundsey Project
Scale
1:50 @ A0
Drawn by
AH
Checked by
AH
Drawing Title and No.
BF-D&E
PART & SECTION ELEVATION DETAILS
PROPOSED
Drawing No.
2607-KPF-BF01-XX-DR-DET-
A-0301
Rev.
B