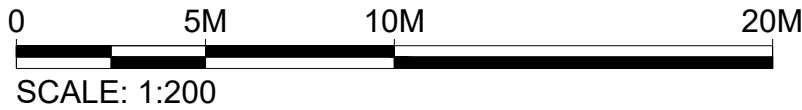
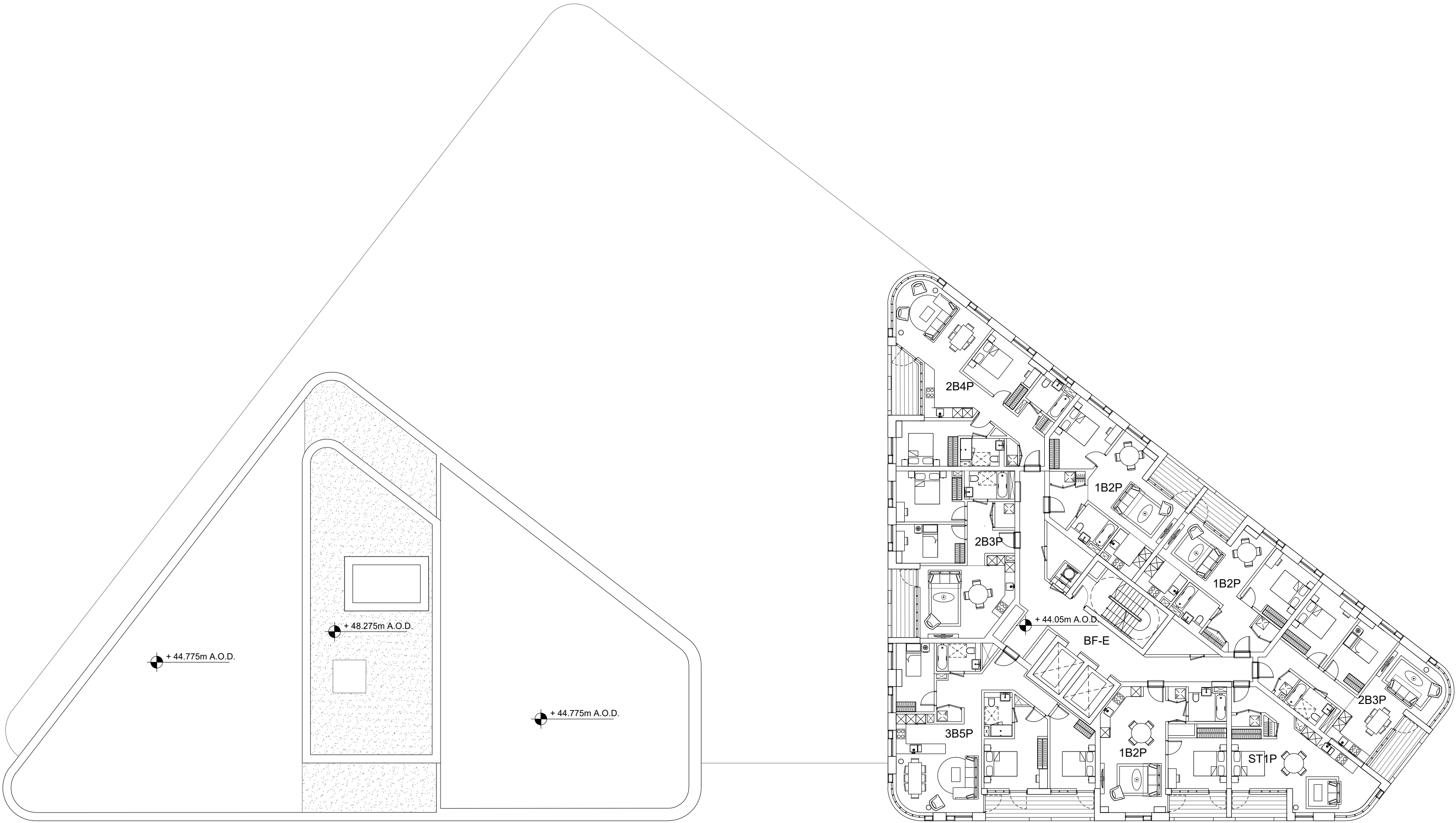


Filename: H:\2607\_Project\Sunbeam\Drawings\CAD\Sheet\2607-KPF-BF01-12-DR-PLN-A-0113.dwg Plotted by: Ascioglu, Bekir Plot Time: 9/11/2019 4:52 PM

1

BF-D&E  
LEVEL 12 - 18 FLOOR PLAN

SCALE: 1:200 @ A1



# KPF

**Client**  
Southwark GP Nominee 1 Ltd. and  
Southwark GP Nominee 2 Ltd.

**Structural Engineer**  
WSP  
Tel: 020 7337 1700

**MEP Engineer**  
Hilson Moran  
Tel: 020 7940 8888

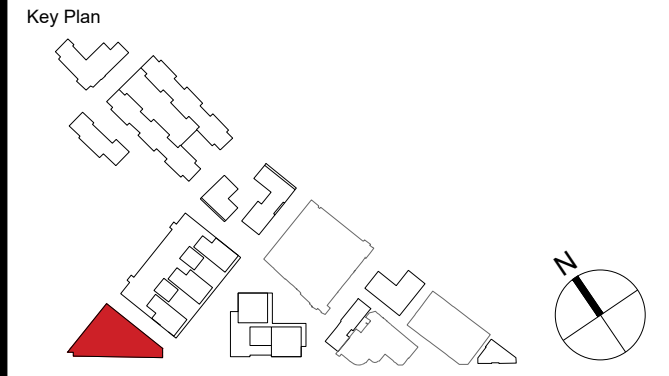
**Landscape Consultant (Strategy)**  
Arup  
Tel: 020 7636 1531

**Landscape Consultant (Design)**  
Andy Sturgeon  
Tel: 012 7367 2575

**Structural Engineer (Building F)**  
AKT II  
Tel: 020 7250 7777

NOTE: THE DETAILED DESIGN OF THE RESIDENT'S COMMUNAL  
TERRACES ARE SHOWN FOR ILLUSTRATIVE PURPOSES ONLY

A AMENDED PROPOSALS		16.09.19
No.	Issue	Check Date



**Kohn Pedersen Fox Associates  
(International) PA**  
Architects and Planning Consultants

7a Langley Street  
London WC2H 9JA  
England  
T: +44 (0) 20 3119 5300  
F: +44 (0) 20 7497 1175  
<http://www.kpf.com>

Project		2607 Bermondsey Project
Scale	Drawn by	Checked by
1:200 @ A1	CH	
Drawing Title and No.		
BF-D&E		
LEVEL 12-18 FLOOR PLAN		
PROPOSED		
Drawing Ref.	Rev.	
2607-KPF-BF01-12-DR-PLN-		
A-0113	A	