

Client
Southwark GP Nominee 1 Ltd. and
Southwark GP Nominee 2 Ltd.

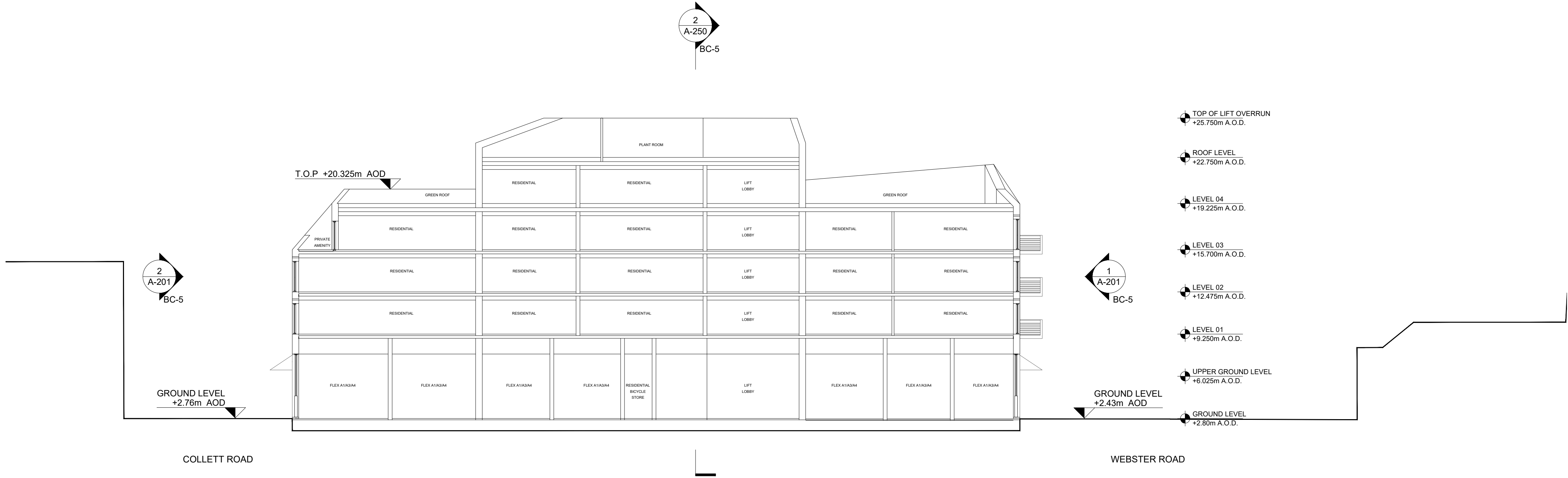
Structural Engineer
WSP
Tel: 020 7337 1700

MEP Engineer
Hilson Moran
Tel: 020 7940 8888

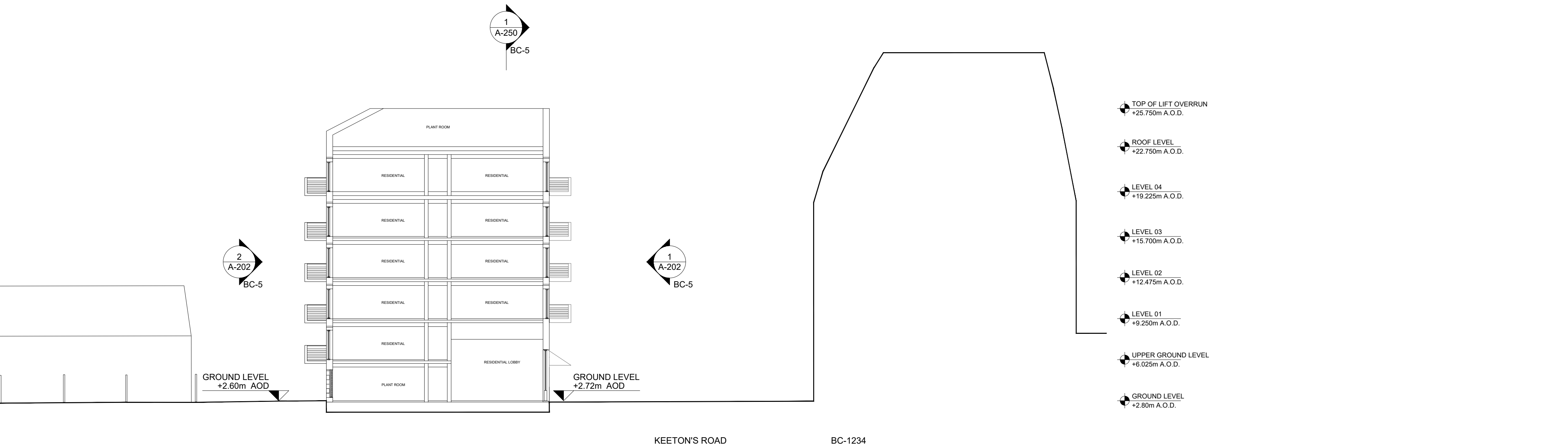
Landscape Consultant (Strategy)
Arup
Tel: 020 7636 1531

Landscape Consultant (Design)
Andy Sturgeon
Tel: 012 7367 2575

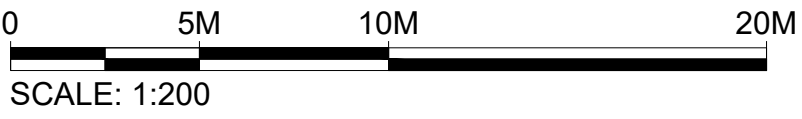
Structural Engineer (Building F)
AKT II
Tel: 020 7250 7777



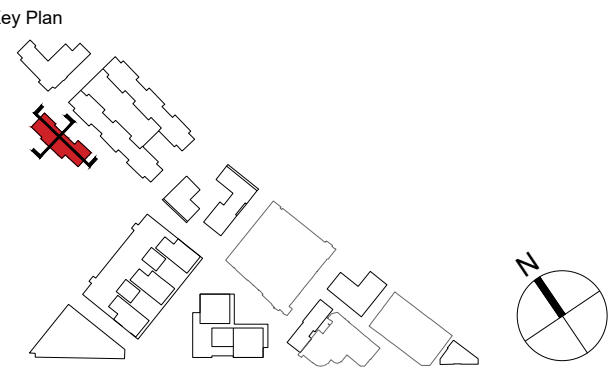
1
**BC-5
NORTH-SOUTH SECTION**
SCALE: 1:200 @ A1



2
**BC-5
EAST-WEST SECTION**
SCALE: 1:200 @ A1



A AMENDED PROPOSALS		16.09.19
No.	Issue	Check Date



**Kohn Pedersen Fox Associates
(International) PA**
Architects and Planning Consultants

7a Langley Street
London WC2H 9JA
England
T: +44 (0) 20 3119 5300
F: +44 (0) 20 7497 1175
<http://www.kpf.com>

Proj. No. 2607
Scale 1:200 @ A1
Project Bermondsey Project
Drawing Title and No. BC-5
Drawing Ref. 2607-KPF-BC02-XX-DR-SEC-
Scale MM
Drawn by
Checked by

Rev.
2607-KPF-BC02-XX-DR-SEC-
A-0250
Rev.
A