

Client
Southwark GP Nominee 1 Ltd. and
Southwark GP Nominee 2 Ltd.

Structural Engineer
WSP
Tel: 020 7337 1700

MEP Engineer
Hilson Moran
Tel: 020 7940 8888

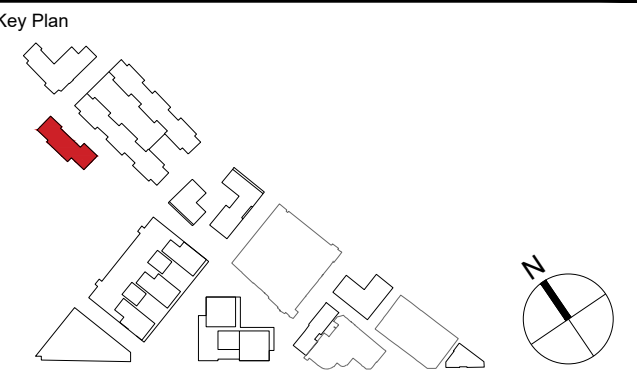
Landscape Consultant (Strategy)
Arup
Tel: 020 7636 1531

Landscape Consultant (Design)
Andy Sturgeon
Tel: 012 7367 2575

Structural Engineer (Building F)
AKT II
Tel: 020 7250 7777

NOTE: THE DETAILED DESIGN OF THE HARD AND SOFT
LANDSCAPE IS SHOWN FOR ILLUSTRATIVE PURPOSES ONLY

B	AMENDED PROPOSALS	16.09.19
A	ADDENDUM	04.06.18
No.	Issue	Check Date



**Kohn Pedersen Fox Associates
(International) PA**
Architects and Planning Consultants

7a Langley Street
London WC2H 9JA
England
T: +44 (0) 20 3119 5300
F: +44 (0) 20 7497 1175
<http://www.kpf.com>

Proj. No. Project
2607 Bermondsey Project

Scale Drawn by Checked by
1:200 @ A1 MM

Drawing Title and No.
BC-5

GROUND FLOOR PLAN
PROPOSED

Drawing Ref. Rev.
2607-KPF-BC02-00-DR-PLN-

A-0100 **B**

© 2018 KOHN PEDERSEN FOX ASSOCIATES (INTERNATIONAL) PA. All rights reserved.
Where drawing contains Ordnance Survey data © Crown Copyright. Licence no. 10001998.



BC-5
GROUND FLOOR PLAN
SCALE: 1:200 @ A1

0 5M 10M 20M
SCALE: 1:200

