

Client
Southwark GP Nominee 1 Ltd. and
Southwark GP Nominee 2 Ltd.

Structural Engineer
WSP
Tel: 207 337 1700

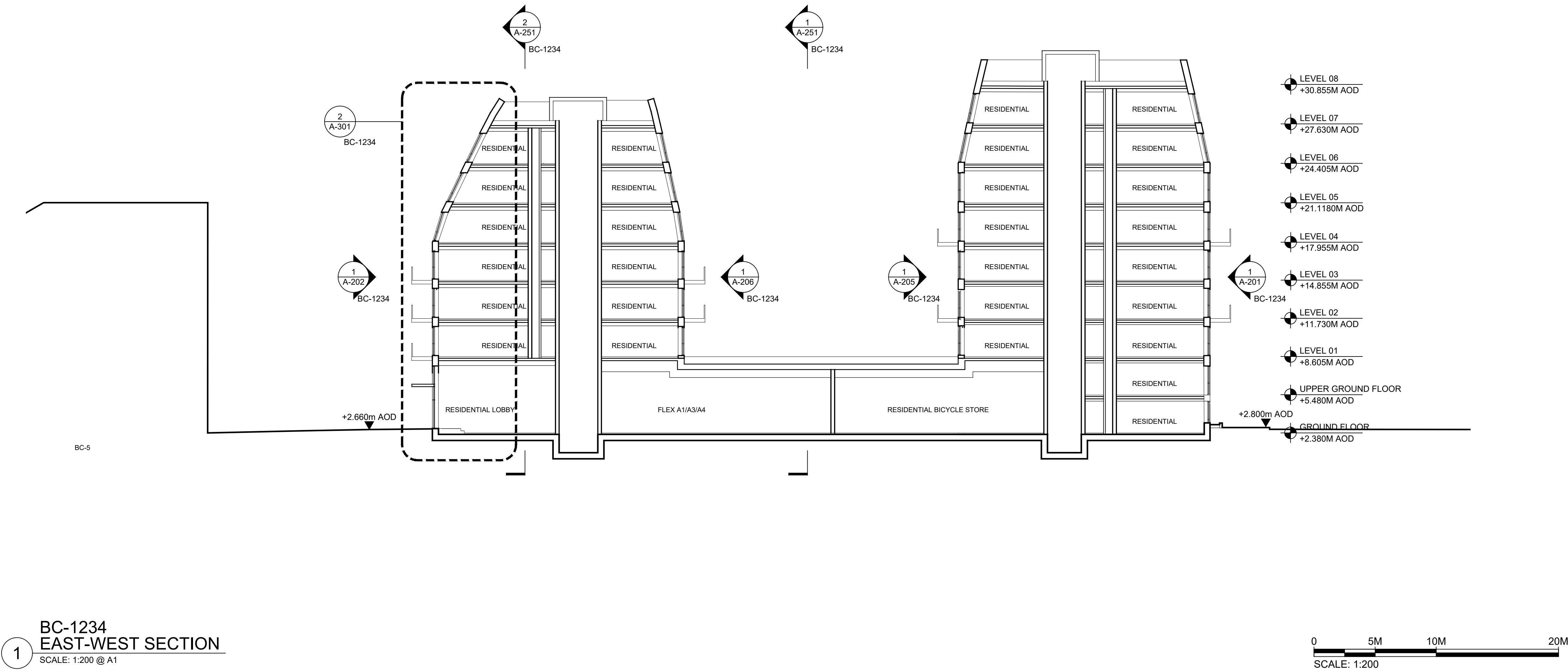
MEP Engineer
Hilson Moran
Tel: 207 940 8888

Landscape Consultant (Strategy)
Arup
Tel: 207 636 1531

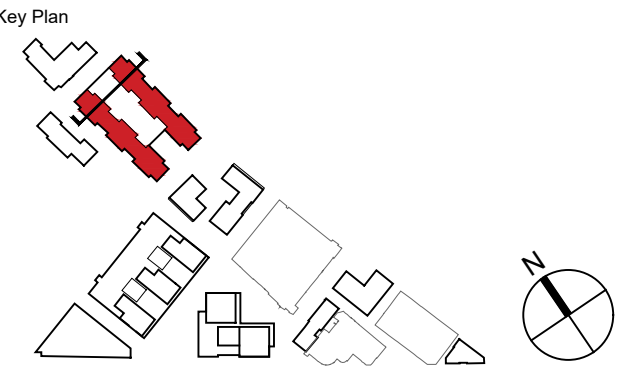
Landscape Consultant (Design)
Andy Sturgeon
Tel: 127 367 2575

Structural Engineer (Building F)
AKT II
Tel: 207 250 7777

Filename: H:\2607_Project\Sunbeam\Drawings\CAD\Sheet\2607-KPF-BC03-XX-DR-SEC-A-250.dwg Plotted by: Stop, Magdalena Plot Time: 1/19/2018 3:32 PM



A ADDENDUM		19.01.18
No.	Issue	Check Date



**Kohn Pedersen Fox Associates
(International) PA**
Architects and Planning Consultants

7a Langley Street
London WC2H 9JA
England
T: +44 (0) 20 3119 5300
F: +44 (0) 20 7497 1175
<http://www.kpf.com>

Proj. No. Project
2607 Bermondsey Project

Scale	Drawn by	Checked by
1:200 @ A1	GG	

Drawing Title and No.
BC-1234

EAST-WEST SECTION

PROPOSED

Drawing Ref.	Rev.
2607-KPF-BC03-XX-DR-SEC-	

A-0250 **A**