

**Client**  
Southwark GP Nominee 1 Ltd. and  
Southwark GP Nominee 2 Ltd.

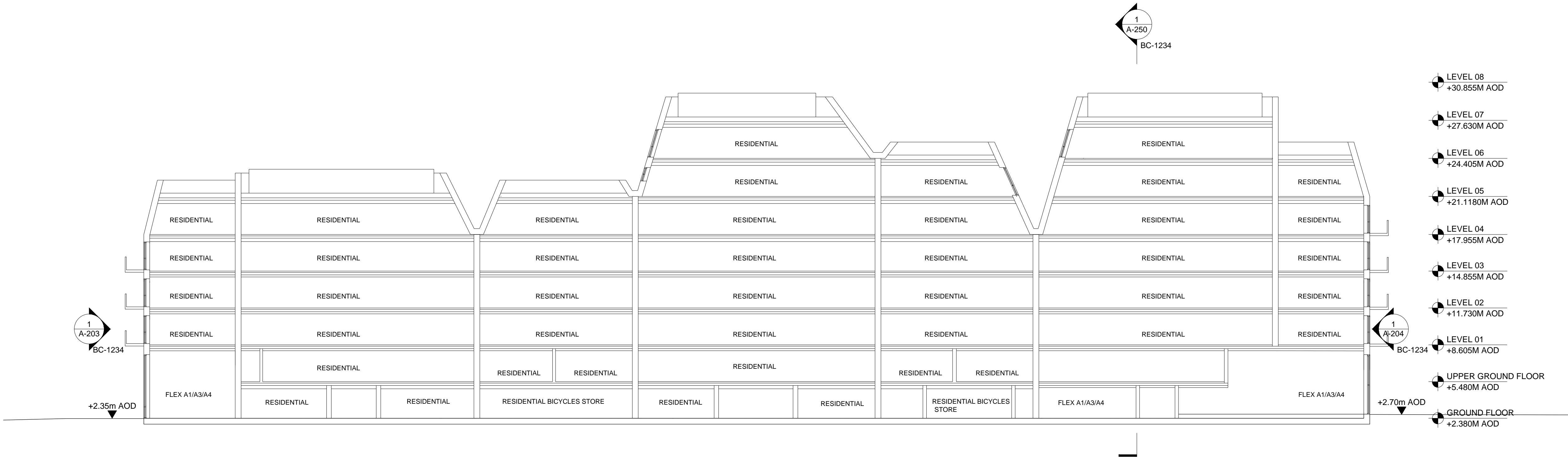
**Structural Engineer**  
WSP  
Tel: 207 337 1700

**MEP Engineer**  
Hilson Moran  
Tel: 207 940 8888

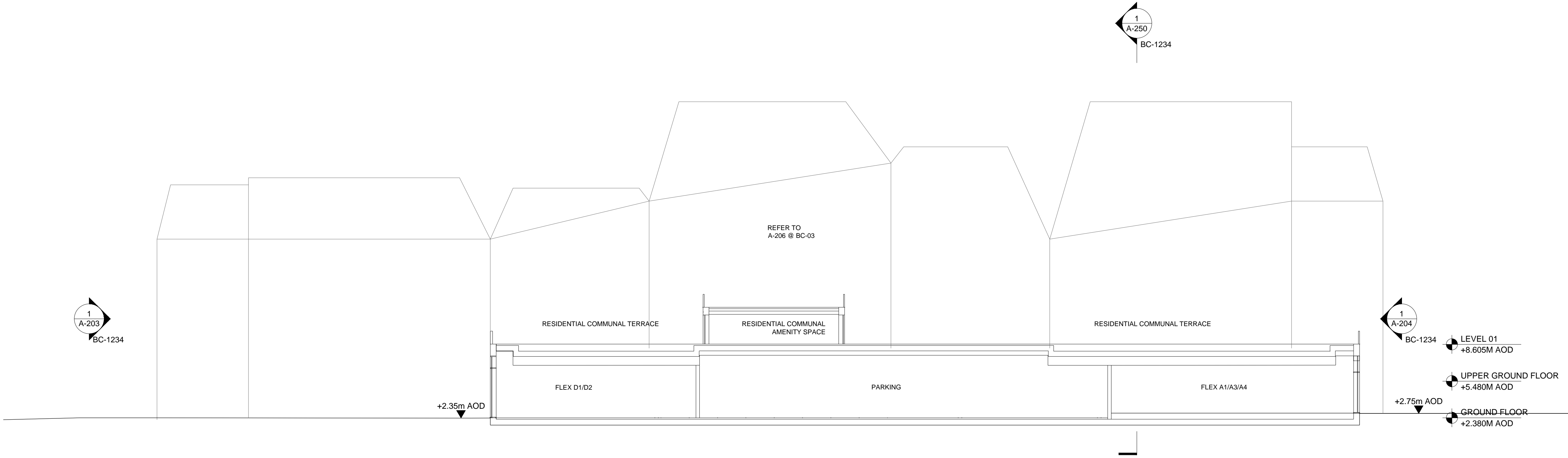
**Landscape Consultant (Strategy)**  
Arup  
Tel: 207 636 1531

**Landscape Consultant (Design)**  
Andy Sturgeon  
Tel: 127 367 2575

**Structural Engineer (Building F)**  
AKT II  
Tel: 207 250 7777

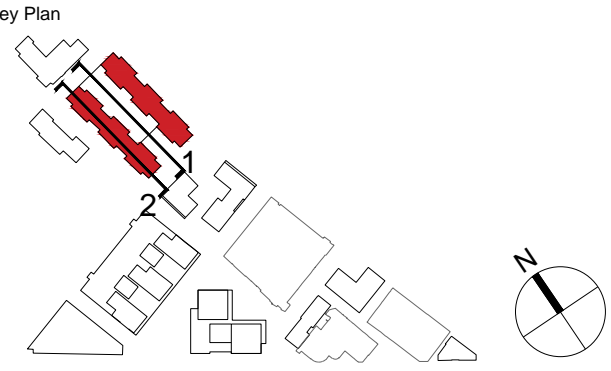


2 BC-1234  
NORTHSOUTH SECTION 2  
SCALE: 1:200 @ A1



1 BC-1234  
NORTHSOUTH SECTION 1  
SCALE: 1:200 @ A1

B	ADDENDUM	04.06.18
A	ADDENDUM	19.01.18
No.	Issue	Check Date



**Kohn Pedersen Fox Associates  
(International) PA**  
Architects and Planning Consultants

7a Langley Street  
London WC2H 9JA  
England  
T: +44 (0) 20 3119 5300  
F: +44 (0) 20 7497 1175  
<http://www.kpf.com>

Proj. No. 2607 Project Bermondsey Project

Scale 1:200 @ A1 Drawn by GG Checked by

Drawing Title and No. BC-1234

NORTH-SOUTH SECTION  
PROPOSED

Drawing Ref. 2607-KPF-BC03-XX-DR-SEC- Rev.

A-0251 B