

GREATER**LONDON**AUTHORITY

**Data Management and Analysis Group**

# **ONS 2003-based Subnational Population Projections**

**DMAG Briefing 2004/25  
December 2004**

**John Hollis  
Georgia Hay**

**ISSN 1479-7879**

# **DMAG Briefing 2004/25**

**December 2004**

## **ONS 2003-based Subnational Population Projections**

For more information please contact:

**Georgia Hay**

Data Management and Analysis Group  
Greater London Authority  
City Hall (5 East PP14)  
The Queen's Walk  
London SE1 2AA

Tel: 020 7983 4347  
[georgia.hay@london.gov.uk](mailto:georgia.hay@london.gov.uk)

Copyright © Greater London Authority, 2004

ONS mid-year estimates and ONS and GAD  
projections are:  
© Crown Copyright.

ISSN 1479-7879

## Summary

The ONS 2003-based subnational population projections for England show the population by age and gender for each year to 2028 for all local and health authorities. The projections are constrained to the Government Actuary's Department (GAD) 2003-based projection for England that assumes a long-term net international inflow of 124 thousand per year.

The projections differ from the GLA 2003 Round Scenario 8.1 projections in a number of significant ways:

- The base populations are the mid-2001 estimates that were re-revised in September 2004.
- The GLA projections are linked to future housing capacity.
- The ONS projections use average migration flows in the period 1998-2003 as the basis for the projection.
- The GLA projections are unconstrained.

The projections show London's population increasing by 620 thousand between 2003 and 2016 reaching a population of 8.01 million, 100 thousand fewer than that used in the *London Plan*. However, there are large differences for individual boroughs reflecting ONS' use of migration levels for 1998-2003 that were not adjusted to reflect the recently estimated changes in population over the same period. This is seen best in the ONS projection of more than 50% increase in the population of Westminster between 2001 and 2016.

A more significant difference is that the ONS projection shows that by 2016 there will be 52 thousand more males than females in London. The *London Plan* projections show a continuation of the present position of significantly more women. The reasons for these different outcomes lies in the extent to which ONS is reliant on information on the age/gender of persons reporting a changed address to their GPs or changing their GPs. As women are more likely to report a change and London is at present showing a strong net loss of persons to the rest of the UK this will impact on the relative rates at which the projections show men and women to be leaving London. The *London Plan* projections use different methods that allow for more men leaving London than the unadjusted GP data imply. This difference has implications for the projected numbers of births and, hence, children in London, the future requirement for homes and the level of the average household size.

ONS have been made aware of GLA DMAG misgivings over some of the results reported here.

## Background

The Office for National Statistics (ONS) released the 2003-based Subnational Population Projections on 25 November 2004. The projections are based on the mid-2003 estimates released on 9 September. Projections have been produced from 2004 to 2028, showing the outcome if the recent trends and differentials over the five-year period mid-1998 to mid-2003, in local births, deaths and migration continue. Unlike the GLA projections, these do not include any housing development data.

The projections have been produced consistently across all local authorities within England and have been constrained to the GAD 2003-based national projections for England that were released on 30 September 2004. The assumptions used by ONS to produce the projections are consistent with those used at a national level by GAD, but have been disaggregated to local authorities using historical trends. While births, deaths and international migrants have been constrained to the GAD projection by single years of age and gender, migration within England is automatically constrained to be a zero sum across all authorities.

In this *Briefing*, comparisons of the ONS Subnational Projections will be made across the Government Office Regions, *London Plan* Sub-Regions and individual London boroughs, as well as compared with the GLA 2003 Round Scenario 8.1 projections. It should be noted that the GLA 2003 Round projections are based on an earlier revision of the 2001 mid-year estimates (7,307,900 for London) than the latest revised estimate used in the ONS projections (7,322,400).

## National and Regional Projections

Projections for England show that the population is projected to increase by 3,320,700 between 2001 and 2016, an increase of 6.7%. This represents an average increase of 221,400 per year. This projection was reported on in DMAG *Demography Update 2004/04*.

With the exception of the North East region, all Government Office Regions (GORs) are projected to increase steadily between 2001 and 2016. The North East is expected to fall by an average of just under 2,000 per year, which represents a small fall of 1.1% over the whole period. In percentage terms, the Eastern region is projected to increase the most, with a 10.1% rise. However, nominally, London is projected to increase by the greatest amount, 685,400, contributing over 20% of the growth in England.

The influence of the South of England is evident here with the increases in the four Southern GORs, East, London, South East and South West, making up over 70% of England's increase. In fact, East Midlands is fast becoming part of the 'Greater South East' as more people live there and work in London, and including this region would push the influence up to 82%. As well as generally contributing more to the increasing population of England. These five regions have also increased the proportion of England that they constitute. In contrast, the North West, West Midlands and Yorkshire and the Humber regions, in spite of increasing in population, are projected in 2016 to contribute proportionately fewer people to the national population than in 2001.

Table 1, overleaf, shows the comparison between the Government Office Regions.

**Table 1: ONS Subnational Projections by Government Office Region**

	Thousands					
	ONS Subnational Projections					
	2001	2003	2006	2011	2016	2021
North East	2,540.1	2,539.4	2,529.0	2,518.9	2,512.1	2,505.4
North West	6,773.0	6,804.5	6,829.9	6,887.4	6,957.3	7,030.8
Yorkshire and The Humber	4,976.6	5,009.3	5,049.8	5,123.0	5,201.5	5,281.8
East Midlands	4,189.6	4,252.3	4,320.3	4,433.2	4,547.4	4,662.2
West Midlands	5,280.7	5,319.9	5,354.0	5,421.4	5,498.5	5,578.7
East	5,400.5	5,462.9	5,572.0	5,756.7	5,947.6	6,139.0
<b>London</b>	<b>7,322.4</b>	<b>7,387.9</b>	<b>7,520.9</b>	<b>7,758.3</b>	<b>8,007.8</b>	<b>8,244.8</b>
South East	8,023.4	8,080.3	8,210.4	8,434.7	8,668.8	8,910.4
South West	4,943.4	4,999.3	5,096.9	5,261.8	5,429.4	5,600.7
England	49,449.7	49,855.8	50,483.2	51,595.4	52,770.4	53,953.8

Source: ONS Subnational Population Projections

### The London Projection

The ONS Subnational projections show London's population to increase by 685,400 or 9.4% to 8,007,800 in 2016. This represents an average increase of 45,700 a year with the growth reaching a peak between 2011-12 and 2012-13 then tailing off quite quickly afterwards. The GLA Scenario 8.1 projections, in comparison, show the population of London increasing by 800,200, 10.9%, over the same period. Although there are year on year increases, growth in the GLA London projection is expected to decline at a steady rate. Table 2 and Chart 1 show the population for Greater London for both the ONS and the GLA projections between 2001 and 2021. In all years, apart from the different versions of the 2001 and 2002 mid-year estimates used in the two projections, the GLA figures are higher than the ONS figures. The GLA projection for 2003 is about 26 thousand greater than the ONS mid-year estimate and this difference reaches a maximum of nearly 102,000 in 2013.

Both sets of projections show increases in the male and female populations; however, the pattern of growth is very different. The ONS projections estimate that between 2001 and 2016 males will increase by 12.0% compared with 6.8% for females; in contrast, the GLA projections estimates that the increases will be 9.1% and 12.8% respectively. In the ONS projection from 2001 to 2016 males increase by 430 thousand while the growth in females is only 250 thousand.

The difference in the increases has an effect on the gender balance of the projected populations. In 2001 (revised and re-revised mid-year estimates) the two series show that the proportion of the population that is female is virtually identical with only 0.1 percentage point difference. After this, the ONS projections show a decline in the female proportion, which is projected to fall below 50% in 2011, and further declining to 49.4% in 2021. In contrast, the GLA projections show an increasing proportion of females, which steadily rises to 51.7% in 2021. Chart 2 shows the imbalance in the gender split between the two projections.

In spite of other differences, the ONS and GLA projections do show broadly similar age structures at 2016. For the males, the GLA projections show higher numbers at all ages from 0-4 to 20-24 year olds, with the ONS projection being significantly higher at ages 30-54 and 65+. For the females the GLA projections show higher numbers at all ages

from 0–4 to 40–44 year olds, with the ONS projection only being higher at all ages over 65. Table 3 and Charts 3 and 4 show the age structure by gender.

The importance of the lower number of women in the main reproductive ages in the ONS projection is that it could also partly explain the lower number of children in the ONS work. The imbalance between the genders will also have the impact of being converted to a projection of too many households in London when ODPM publish their 2003-based household projection in Spring 2005. The reasons for this lie in the fact that males have higher household representation rates than women. The impact of too few children will also show up in the household projections by indicating lower average household sizes.

**Table 2: Population Projections – London**

	Thousands	
	ONS Subnational	GLA Scenario 8.1 Projections
2001	7,322.4	7,307.9
2002	7,371.2	7,355.6
2003	7,387.9	7,414.2
2004	7,431.0	7,472.2
2005	7,475.8	7,529.3
2006	7,520.9	7,585.6
2007	7,567.0	7,641.2
2008	7,613.6	7,696.3
2009	7,661.0	7,750.5
2010	7,709.3	7,804.0
2011	7,758.3	7,856.7
2012	7,807.9	7,908.5
2013	7,857.9	7,959.6
2014	7,908.2	8,009.9
2015	7,958.2	8,059.4
2016	8,007.8	8,108.1
2017	8,057.0	8,155.9
2018	8,105.4	8,202.8
2019	8,153.0	8,248.7
2020	8,199.6	8,293.8
2021	8,244.8	8,337.8

Source: ONS Subnational Population Projections, GLA 2003 Round Population Projections (Scenario 8.1)

**Table 3: Population Projections by age and gender – London**

	<b>ONS Mid-2001 Estimates (Sept 04)</b>			<b>ONS Subnational Projections 2016</b>			<b>Thousands GLA Scenario 8.1 Projections 2016</b>		
	Male	Female	Total	Male	Female	Total	Male	Female	Total
0-4	244.2	234.6	478.8	262.2	251.4	513.6	288.5	277.2	565.7
5-9	231.0	221.2	452.3	233.4	225.3	458.7	260.0	249.3	509.3
10-14	222.8	213.7	436.4	215.3	210.0	425.3	242.1	232.1	474.2
15-19	213.3	205.2	418.5	202.9	200.7	403.6	236.5	228.7	465.2
20-24	264.4	278.4	542.8	271.3	300.2	571.4	295.5	330.3	625.8
25-29	373.5	362.8	736.3	385.2	387.8	773.0	375.4	424.8	800.2
30-34	382.1	357.5	739.7	388.4	344.3	732.6	360.6	390.4	751.0
35-39	327.8	326.1	653.9	346.8	299.9	646.8	316.0	337.1	653.1
40-44	257.7	260.5	518.1	334.5	286.6	621.1	295.7	297.2	592.9
45-49	208.0	216.3	424.3	314.9	281.6	596.4	282.4	283.7	566.0
50-54	199.7	211.8	411.4	271.4	264.0	535.3	245.9	267.1	513.0
55-59	158.8	170.4	329.2	210.6	212.5	423.1	206.3	217.9	424.2
60-64	137.5	146.0	283.5	158.7	171.3	330.0	158.9	167.1	326.0
65-69	119.8	129.4	249.2	141.3	159.1	300.4	128.5	144.8	273.3
70-74	100.4	120.9	221.3	103.5	123.2	226.7	88.9	109.6	198.5
75-79	76.4	109.4	185.9	81.1	99.8	180.9	65.1	87.7	152.8
80-84	47.5	79.5	127.0	58.0	77.6	135.5	44.5	66.5	111.0
85+	32.1	81.6	113.7	50.7	82.7	133.4	34.1	71.7	105.8
<b>Total</b>	<b>3597.1</b>	<b>3725.3</b>	<b>7322.4</b>	<b>4030.0</b>	<b>3977.8</b>	<b>8007.8</b>	<b>3924.8</b>	<b>4183.3</b>	<b>8108.1</b>

Source: ONS Subnational Population Projections, GLA 2003 Round Population Projections (Scenario 8.1)

**Chart 1: Greater London Population Projections 2001-2021**

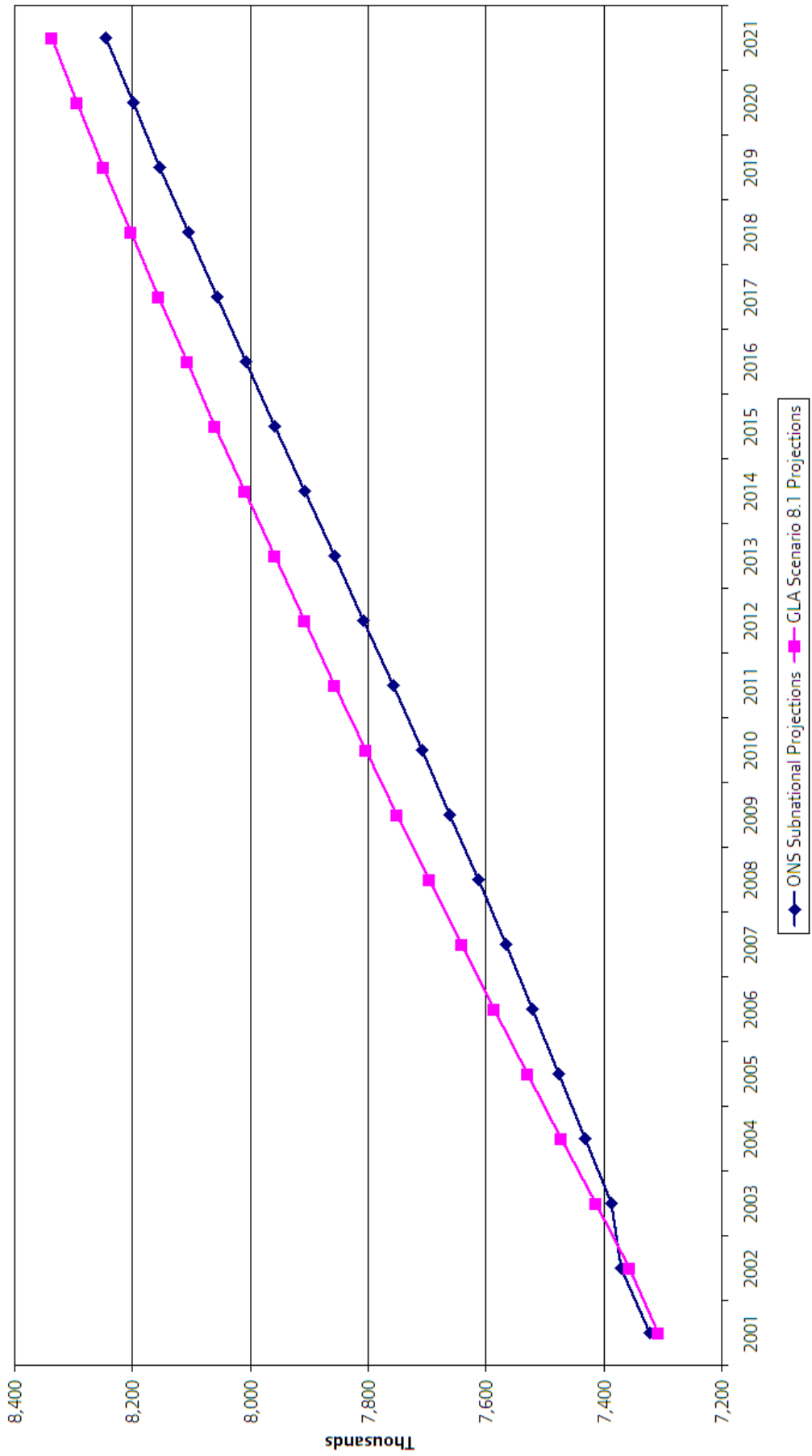
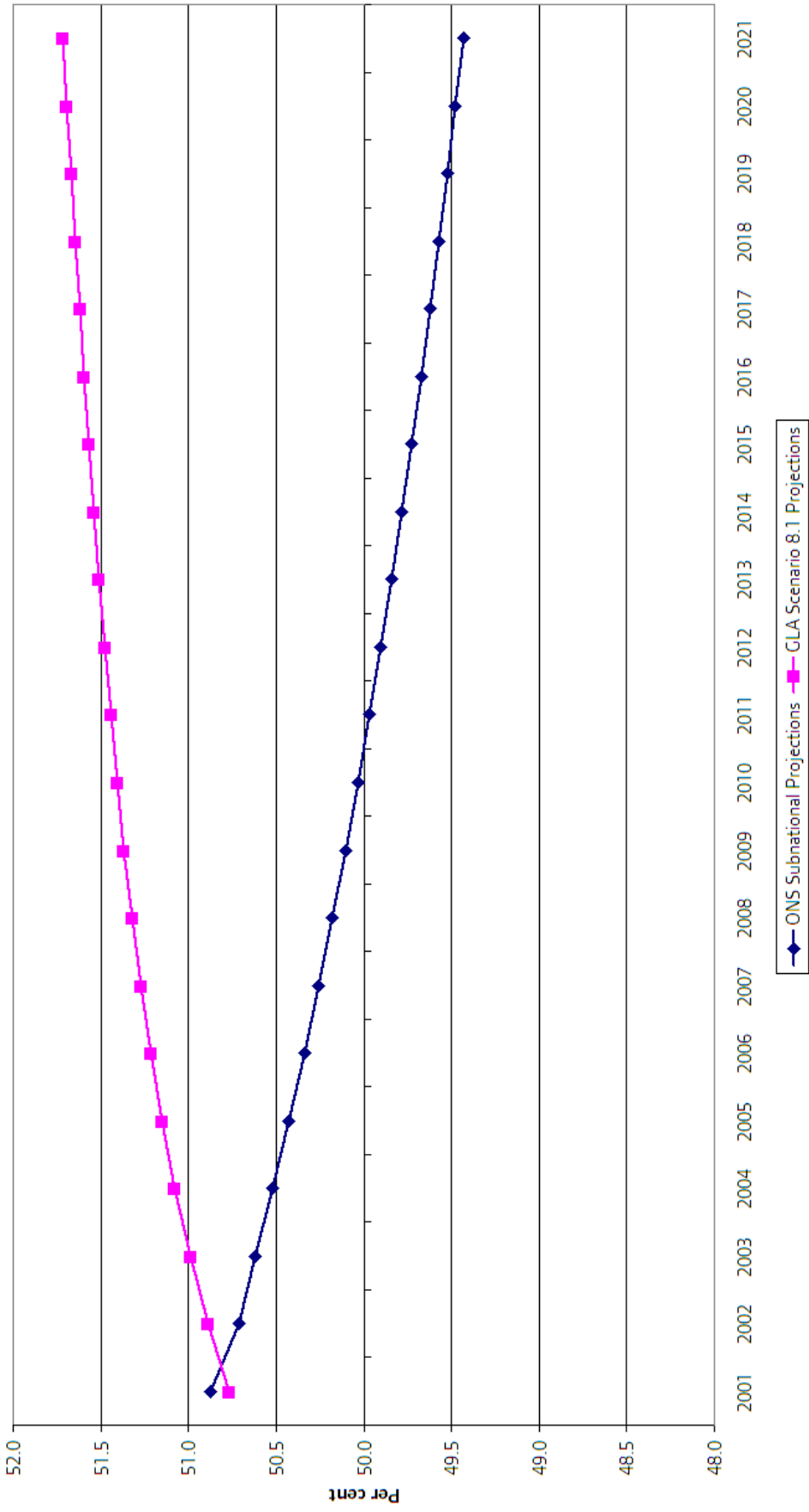
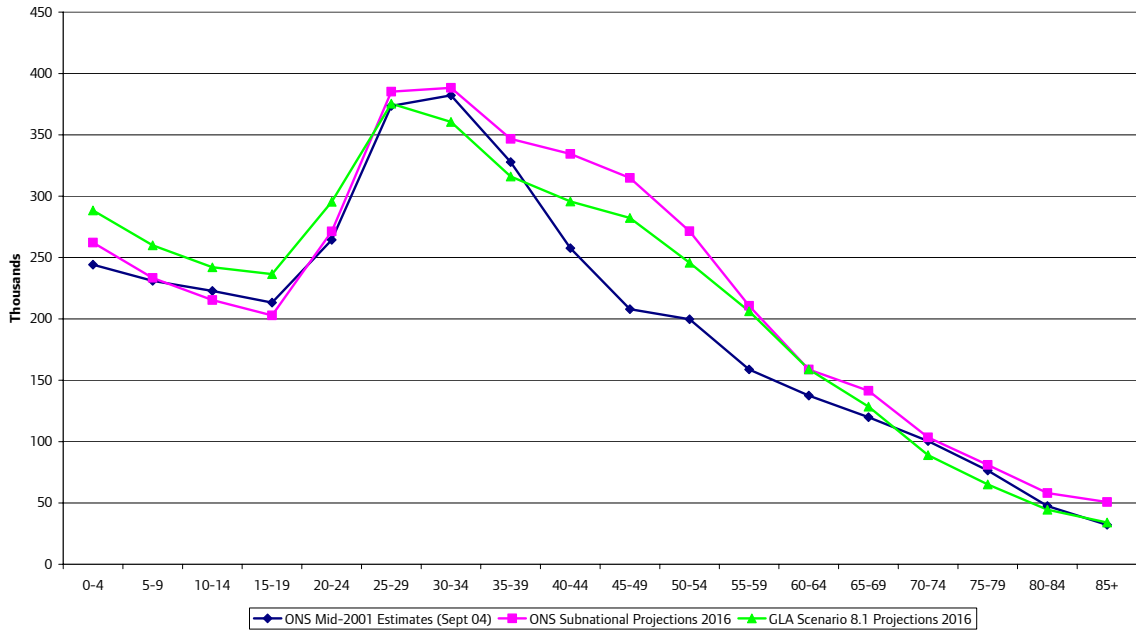


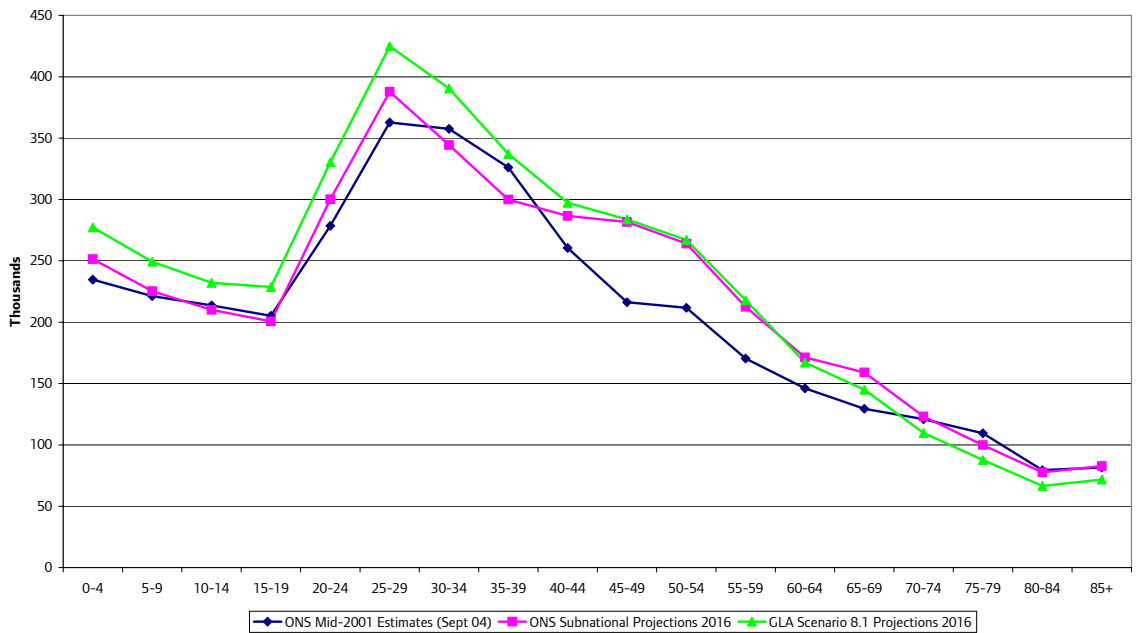
Chart 2: Proportion of Females in Population of London



**Chart 3: London Age Structure - Males**



**Chart 4: London Age Structure - Females**



## London Plan Sub-Regions

Growth across London is not uniform. ONS projects that over 40% of the growth in London between 2001 and 2016 will be in Central London, with only 5% occurring in the West London sub-region. East London and the Thames Gateway and the South London sub-region make up slightly more than 20% each of the growth with North London accounting for around 11%. The GLA projections show a slightly more balanced scenario, with around 30% of London's growth occurring in each of Central London and East London and the Thames Gateway, and the remaining 40% being divided more equally among the other three sub-regions.

Table 4 below, shows the projected populations for the sub-regions. Although there are differences in the rates of growth in the sub-regions, the 2016 projection shows that for both series the geographic make-up of London is very similar. Chart 5 shows this, alongside the population in each sub-region as a percentage of London's population in 2016.

**Table 4: Population Projections by London Plan Sub-Region**

	ONS Subnational Projections						Thousands
	2001	2003	2006	2011	2016	2021	Sc 8.1 2016
<b>SRDF Sub-Regions</b>							
Central London	1,549.3	1,583.6	1,642.8	1,737.1	1,824.9	1,899.2	1,755.2
East London and the Thames Gateway	1,980.6	1,992.3	2,021.7	2,074.4	2,131.0	2,186.9	2,231.6
West London sub-region	1,417.9	1,418.2	1,417.1	1,428.8	1,451.9	1,478.5	1,533.0
North London sub-region	1,040.0	1,051.0	1,063.7	1,089.3	1,118.1	1,146.9	1,152.5
South London sub-region	1,327.3	1,334.5	1,366.8	1,418.8	1,470.9	1,521.5	1,426.4

Source: ONS Subnational Population Projections, GLA 2003 Round Population Projections (Scenario 8.1)

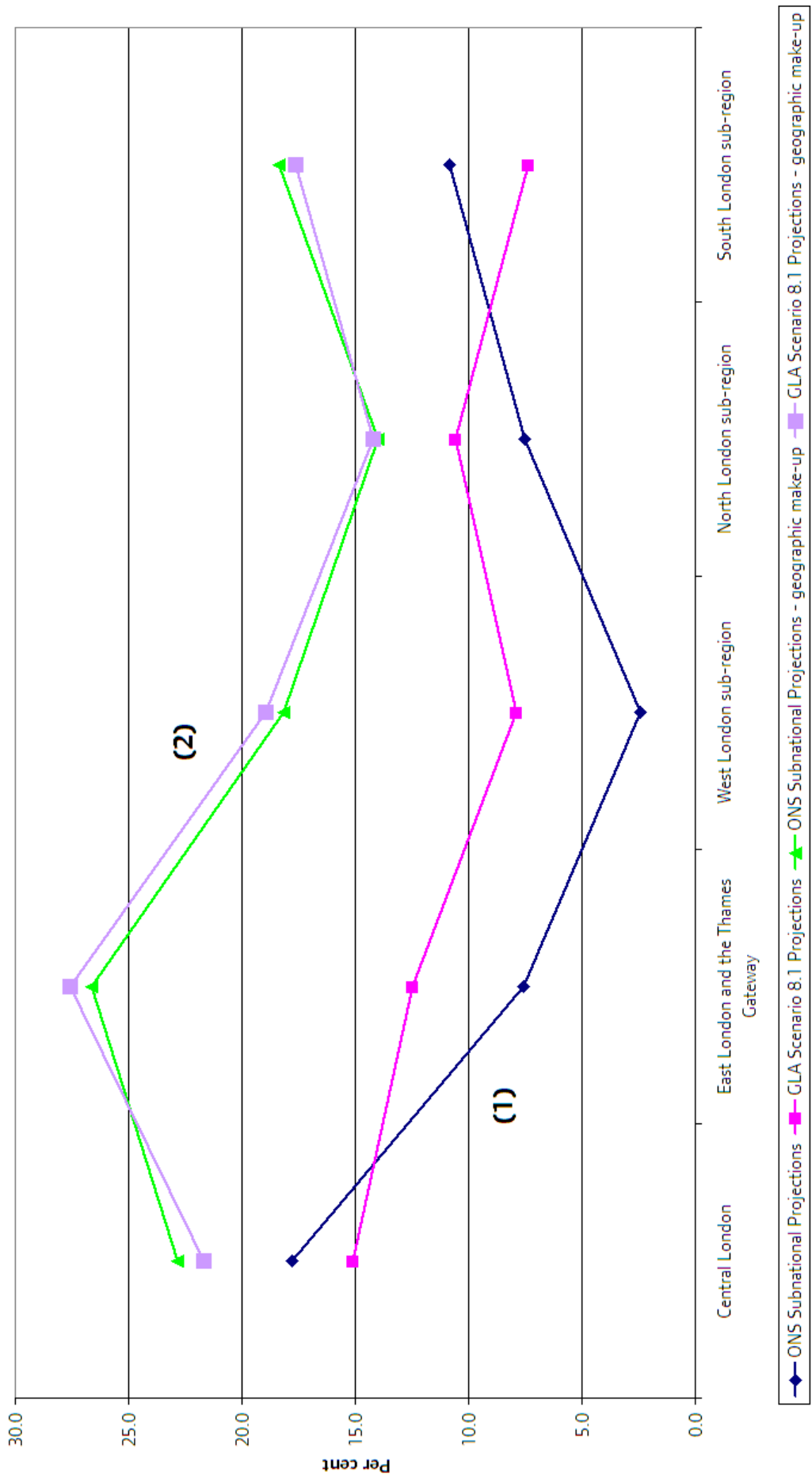
Similar to London as a whole, the sub-regions have very different gender structures between the two projections. In the ONS projections two of the sub-regions have more males than females; in Central London, which has the greatest percentage of males, there has been the largest increase between 2001 and 2016 suggesting that the increase is predominately male. In the GLA projections all sub-regions have a greater percentage of females.

**Table 5: 2016 Population Projections by gender by London Plan Sub-Region**

	ONS Subnational Projections				GLA Scenario 8.1 Projections			
	Male	Female	Total	% Female	Male	Female	Total	% Female
Central London	935.1	889.9	1824.9	48.8	839.7	915.5	1755.2	52.2
East London and the Thames Gateway	1071.9	1059.1	2131.0	49.7	1084.3	1147.3	2231.6	51.4
West London sub-region	726.6	725.3	1451.9	50.0	744.6	788.5	1533.0	51.4
North London sub-region	558.1	559.9	1118.1	50.1	557.9	594.6	1152.5	51.6
South London sub-region	732.3	738.6	1470.9	50.2	693.7	732.8	1426.4	51.4

Source: ONS Subnational Population Projections, GLA 2003 Round Population Projections (Scenario 8.1)

**Chart 5: London Plan Sub-Regions - (1) Population Change 2001 - 2016 and (2) 2016 Geographical Make-up of London**



## London Boroughs

The ONS Subnational Projections show growth in most boroughs, however four boroughs are projected to show falls over the period 2001 to 2016. The greatest fall is in Brent, at 6.4%. Although Brent had seen increases in recent years, the ONS mid-2003 estimate showed a fall, which has been projected forwards. Lambeth and Lewisham are also expected to see falls, of 1.2% and 3.4% respectively and Hounslow is projected to have a very small fall of less than half a percent. Table 6 below shows the ONS projected population compared with the 2016 GLA projections.

**Table 6: Population Projections by London borough**

	ONS Subnational Projections					Thousands Sc 8.1	
	2001	2003	2006	2011	2016	2021	2016
Barking and Dagenham	165.7	165.9	169.7	176.0	182.4	188.6	181.4
Barnet	319.5	324.4	334.8	351.0	366.0	379.6	352.6
Bexley	218.8	219.1	221.7	226.1	231.0	236.4	228.7
Brent	269.6	267.8	259.4	253.1	252.4	254.0	299.0
Bromley	296.2	298.3	305.1	315.3	325.4	335.6	316.4
Camden	202.6	210.7	220.7	237.3	252.2	264.8	231.2
Croydon	335.1	336.7	341.2	348.9	357.3	365.8	367.4
Ealing	307.3	305.0	304.3	305.7	309.7	314.5	333.5
Enfield	277.3	280.3	284.6	292.2	300.1	307.9	297.6
Greenwich	217.5	223.7	229.6	238.3	246.2	253.5	246.6
Hackney	207.2	208.4	211.5	217.5	224.1	230.5	231.6
Hammersmith and Fulham	169.4	174.2	176.3	181.7	188.3	194.5	182.6
Haringey	221.3	224.7	223.1	223.6	226.5	230.2	260.3
Harrow	210.0	210.7	211.8	214.2	217.6	221.5	222.6
Havering	224.7	224.6	228.1	234.1	240.6	247.6	237.0
Hillingdon	245.6	247.6	253.4	261.5	268.7	275.4	261.2
Hounslow	216.0	212.9	211.9	212.6	215.2	218.6	234.1
Islington	179.4	180.1	184.1	191.4	198.8	205.3	206.8
Kensington and Chelsea	162.2	174.4	193.4	219.5	240.8	258.2	178.7
Kingston upon Thames	149.0	150.4	156.0	164.4	172.1	179.1	159.3
Lambeth	273.4	268.5	265.8	266.1	270.2	274.7	326.5
Lewisham	254.3	248.3	245.6	244.4	245.7	248.1	284.4
Merton	191.1	191.4	194.3	200.6	208.0	215.5	207.3
Newham	249.4	250.6	252.7	256.7	261.4	266.2	286.1
Redbridge	241.9	245.1	249.4	256.8	264.5	271.9	265.6
Richmond upon Thames	174.3	179.2	188.0	200.9	212.6	223.0	181.8
Southwark	256.7	253.8	252.6	253.7	257.0	260.8	302.9
Sutton	181.5	178.5	182.2	188.7	195.5	202.5	194.2
Tower Hamlets	201.1	206.6	213.4	224.5	235.1	244.1	270.1
Waltham Forest	222.0	221.6	221.2	222.5	225.5	229.2	242.0
Wandsworth	271.7	274.1	277.7	286.5	297.4	306.8	295.1
Westminster	203.3	222.0	248.5	282.6	308.5	328.6	214.0
Central Boroughs	568.1	607.1	662.6	739.4	801.5	851.6	623.9
Rest of Inner Boroughs	2,283.9	2,289.3	2,302.8	2,346.1	2,404.5	2,461.2	2,646.5
Inner Boroughs	2,852.0	2,896.4	2,965.4	3,085.5	3,206.0	3,312.8	3,270.4
Outer Boroughs	4,463.0	4,483.2	4,546.7	4,662.9	4,790.8	4,920.2	4,828.3
Greater London	7,322.4	7,387.9	7,520.9	7,758.3	8,007.8	8,244.8	8,108.1

Source: ONS Subnational Population Projections, GLA 2003 Round Population Projections (Scenario 8.1)

The ONS Subnational projections do not include individual data for the City of London. This is due to the lack of reliable estimates at such a small geographic level. For consistency, the GLA has excluded data for the City of London in the Borough groupings – Central and Inner London – and from the East London and the Thames Gateway sub-region, which the City falls into. However, the London total, for both projections, does include the City however.

At the level of borough, it is clear that the two projections have very different outcomes. These will be discussed in more detail on the following pages but in essence the issues are that:

- over the same period, the GLA projections show all boroughs increasing in population.
- the scale of the differences for some boroughs are larger than would be expected.
- the gender imbalance problem by borough is far more pronounced than for London or the sub-regions.

Table 7 below shows the population at 2016 by borough for the two sets of projections.

**Table 7: 2016 Population Projections by gender by London borough**

	Thousands							
	ONS Subnational Projections				GLA Scenario 8.1 Projections			
	Male	Female	Total	% Female	Male	Female	Total	% Female
Barking and Dagenham	89.4	93.1	182.4	51.0	87.8	93.6	181.4	51.6
Barnet	182.7	183.3	366.0	50.1	170.9	181.6	352.6	51.5
Bexley	112.7	118.3	231.0	51.2	110.8	117.9	228.7	51.5
Brent	124.9	127.4	252.4	50.5	144.5	154.5	299.0	51.7
Bromley	162.6	162.9	325.4	50.1	153.2	163.2	316.4	51.6
Camden	130.0	122.3	252.2	48.5	109.9	121.3	231.2	52.5
Croydon	176.7	180.6	357.3	50.5	178.4	189.0	367.4	51.4
Ealing	157.2	152.5	309.7	49.2	162.1	171.4	333.5	51.4
Enfield	148.5	151.6	300.1	50.5	144.3	153.3	297.6	51.5
Greenwich	127.6	118.7	246.2	48.2	120.1	126.5	246.6	51.3
Hackney	111.5	112.6	224.1	50.2	110.7	120.9	231.6	52.2
Hammersmith and Fulham	94.2	94.2	188.3	50.0	86.9	95.7	182.6	52.4
Haringey	114.0	112.5	226.5	49.7	124.3	136.0	260.3	52.3
Harrow	108.0	109.6	217.6	50.4	108.4	114.3	222.6	51.3
Havering	117.2	123.4	240.6	51.3	115.9	121.1	237.0	51.1
Hillingdon	132.7	136.0	268.7	50.6	127.8	133.5	261.2	51.1
Hounslow	109.6	105.6	215.2	49.1	115.0	119.1	234.1	50.9
Islington	100.9	97.9	198.8	49.2	98.9	107.8	206.8	52.1
Kensington and Chelsea	125.5	115.3	240.8	47.9	84.5	94.3	178.7	52.7
Kingston upon Thames	86.9	85.2	172.1	49.5	77.9	81.4	159.3	51.1
Lambeth	139.8	130.4	270.2	48.3	157.2	169.3	326.5	51.8
Lewisham	122.6	123.1	245.7	50.1	136.4	148.1	284.4	52.1
Merton	104.9	103.1	208.0	49.6	100.8	106.5	207.3	51.4
Newham	133.9	127.5	261.4	48.8	138.7	147.4	286.1	51.5
Redbridge	133.2	131.2	264.5	49.6	131.2	134.4	265.6	50.6
Richmond upon Thames	104.8	107.7	212.6	50.7	88.4	93.4	181.8	51.4
Southwark	132.0	125.0	257.0	48.6	146.6	156.3	302.9	51.6
Sutton	96.4	99.1	195.5	50.7	95.0	99.2	194.2	51.1
Tower Hamlets	123.8	111.2	235.1	47.3	132.8	137.3	270.1	50.8
Waltham Forest	112.9	112.5	225.5	49.9	118.3	123.7	242.0	51.1
Wandsworth	142.6	154.8	297.4	52.1	140.8	154.3	295.1	52.3
Westminster	164.3	144.2	308.5	46.7	101.7	112.3	214.0	52.5

Source: ONS Subnational Population Projections, GLA 2003 Round Population Projections (Scenario 8.1)

The ONS Subnational projections show that the percentage population change between 2001 and 2016 is, for most boroughs, an increase in the range 1% to 18%. The exceptions are the four boroughs with small losses and another four boroughs, Westminster, Kensington and Chelsea, Camden and Richmond upon Thames that are all shown to be increasing at a much higher rate, and far above the projected growth in the GLA Scenario 8.1 projections. This can be seen in detail in Chart 6 on the following page.

Westminster particularly is projected to see enormous growth, of over 50%, between 2001 and 2016. This contrasts with just under 15% growth in the GLA projections. The difficulty in comparing growth in the two sets of projections at a borough level is partly due to the projections having different bases. Although the differences between the September 2003 and September 2004 versions of the 2001 mid-year estimates are small for London, the result of the Local Authority Population Studies was that there was a redistribution of the 2001 estimates. Westminster, Wandsworth and Southwark notably gained in 2001 through the Studies, however for Wandsworth and Southwark between 2001 and 2003 mid-year estimates there was little change. In fact, the growth in London between 2001 and 2003 was very much concentrated in the Central boroughs (Camden, City, Kensington and Chelsea, Westminster), a trend that has been carried on in the ONS projections. The use by ONS of migration estimates for 1998 to 2003 that were incompatible with the estimated population change over the same period is at the seat of the problems of over- and under-projection of certain boroughs.

Growth across the London boroughs is more stable in the GLA projections. The majority of the boroughs are projected to increase by between 5% and 15% with the largest increase being in Tower Hamlets at 34.0%. In contrast, in the ONS projections, Tower Hamlets is projected to increase by less than 17%.

Although the percentage increases, for some boroughs, are quite different between the two projections, in most cases the 2016 levels of population are quite similar. Out of the 32 boroughs (excludes City) only nine have a difference of greater than 10% between the two projections. In fact, for all of the nine there is at least 14% difference. In exactly half of the boroughs, the GLA projections are greater than the ONS projections, with the greatest difference being in Lambeth where the GLA 2016 projection is 56,300 (20.8%) greater than the ONS. In contrast the ONS projections are nearly 95,000 (30.6%) greater than the GLA projections for Westminster. Chart 7 shows in more detail the population levels at 2016 for the two sets of projections as well as the percentage difference between them.

As discussed previously in this *Briefing* there is a difference in the gender split in the later projection years. This difference is more evident when looking at individual boroughs. Chart 8 shows the proportions of females by borough for the two sets of projections at 2016. Some of the boroughs that are projected to experience high population growth between 2001 and 2016 are also those that have lower proportions of females. This suggests that the growth is highly concentrated in the males, possibly due to continuing the current migration trends that are based on sources that are less good at measuring male movement than female movement.

**Chart 6: Population change by London borough 2001 to 2016**

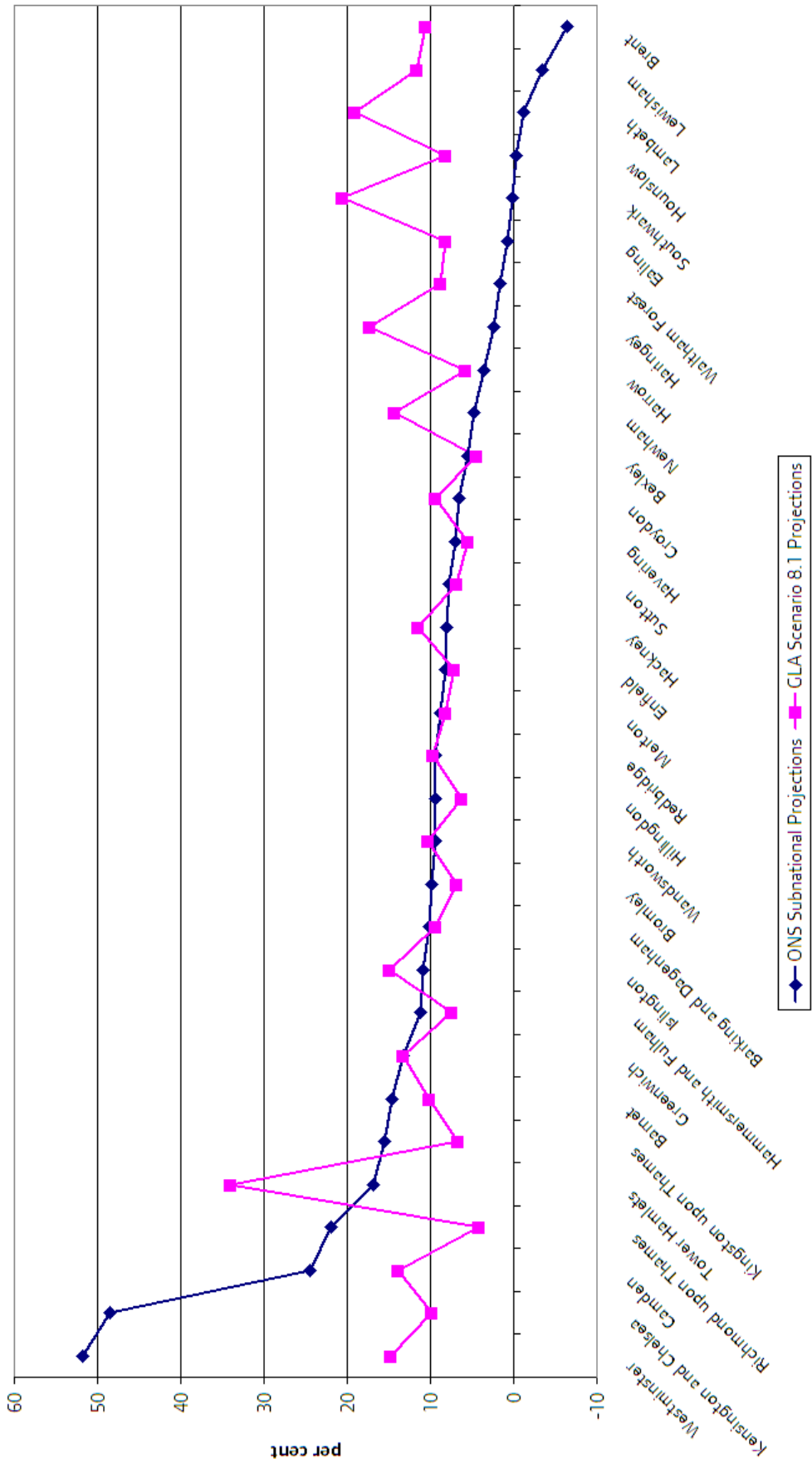


Chart 7: London Borough Projected Population, 2016

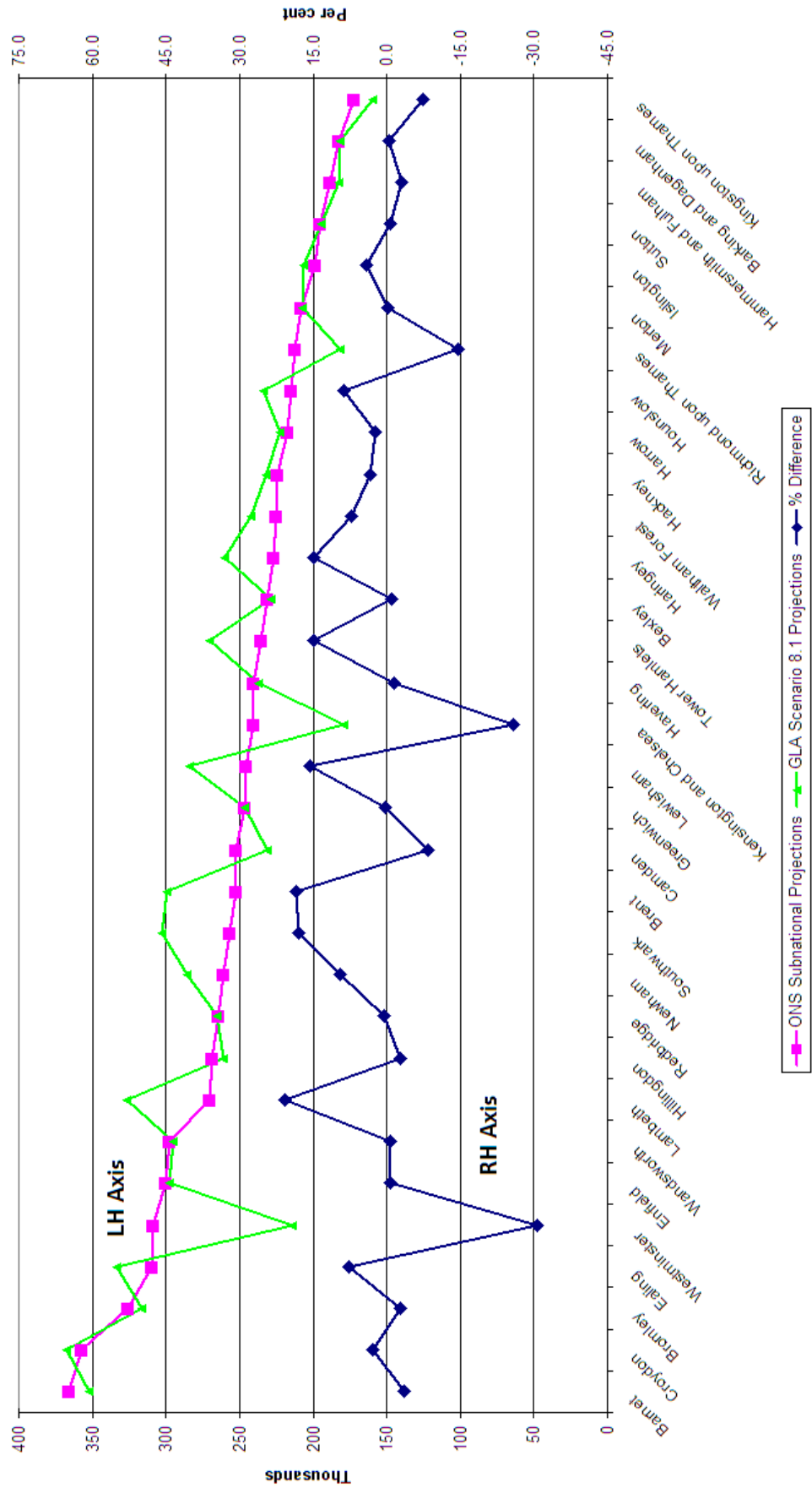
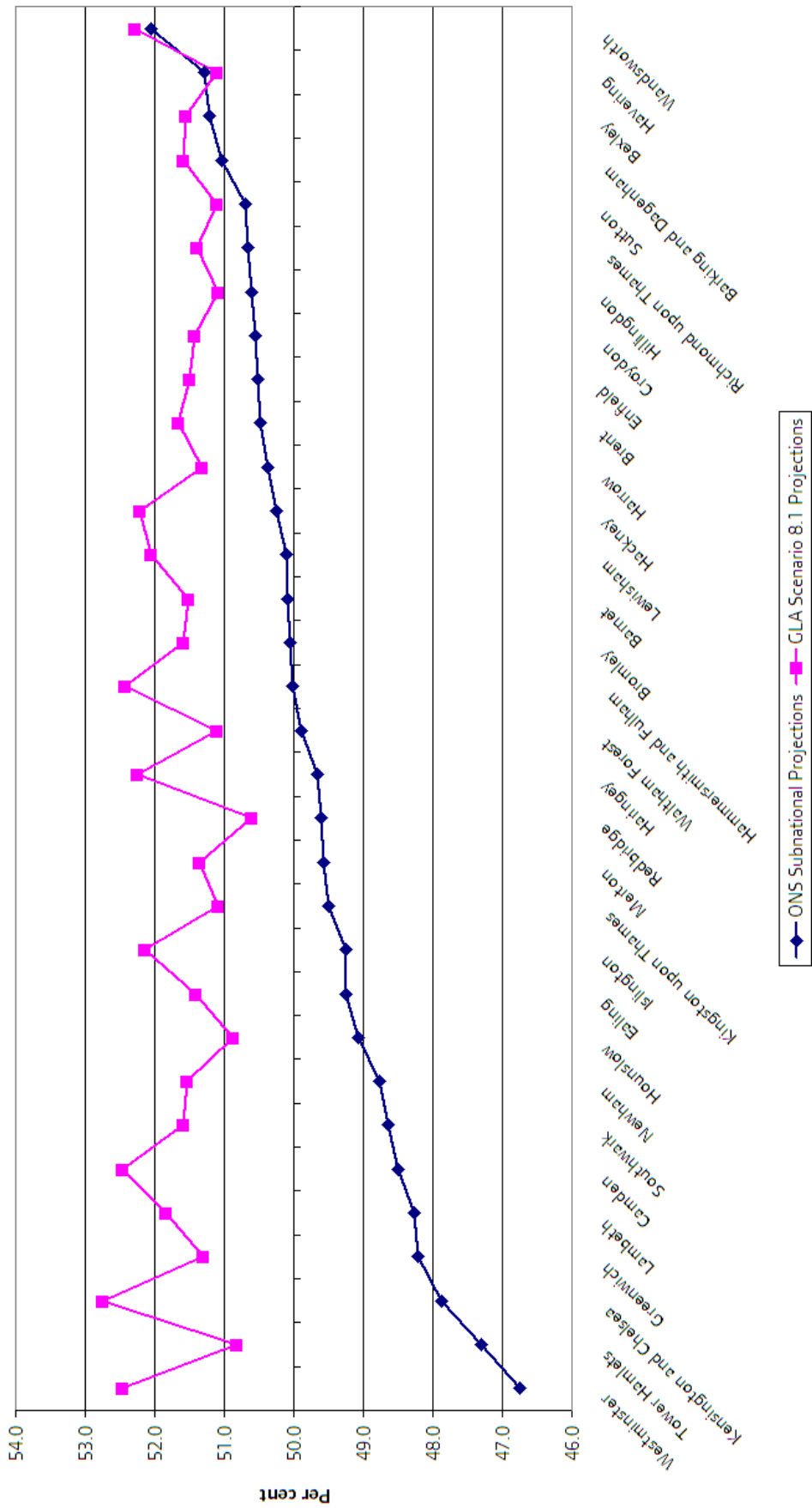


Chart 8: Percentage of Females by London borough, 2016



## Regular Briefings from the GLA Data Management and Analysis Group

### Recent DMAG Briefings:

DMAG 2004/1	2003 Round Ward Population Projections	Georgia Hay
DMAG 2004/2	London's Workers Part 1: 2001 Census results	Eileen Howes
DMAG 2004/3	Borough Demographic Profiles	Georgia Hay
DMAG 2004/4	DMAG Annual Review 2003	Jackie Maguire/ Rob Lewis
DMAG 2004/5	2003 Round Demographic Projections	John Hollis
DMAG 2004/6	Londoners' Qualifications: Analysis of 2001 Census data	Gareth Piggott
DMAG 2004/7	The Parliamentary General Election, 2001	Michael Minors/ Dennis Grenham/ Jackie Maguire
DMAG 2004/8	Constituency Demographic Profiles	Georgia Hay
DMAG 2004/9	Measuring Unemployment	Lorna Spence
DMAG 2004/10	Measures of Income	Rachel Leeser/ Lorna Spence
DMAG 2004/11	2001 Census Profiles: The Irish in London	Eileen Howes
DMAG 2004/12	Health in London Age-standardised Rates	Gareth Piggott
DMAG 2004/13	Data Sources on Refugees and Asylum Seekers	Ed Klodawski
DMAG 2004/14	Census Information Note 2004-1	Eileen Howes
DMAG 2004/15	2001 Census: Local Authority Population Studies	John Hollis
DMAG 2004/16	2001 Census Profiles: Bangladeshis in London	Gareth Piggott
DMAG 2004/17	London Plan Sub-Regional Demographic Profiles	Georgia Hay
DMAG 2004/18	Indices of Deprivation 2004	Rachel Leeser
DMAG 2004/19	2001 Census Profiles: Muslims in London	Eileen Howes
DMAG 2004/20	ONS Mid-Year Population Estimates: 2001 and 2002 (revised) and 2003	John Hollis/ Georgia Hay
DMAG 2004/21	School Register	Shen Cheng
DMAG 2004/22	Census Information Note 2004-2	Gareth Piggott
DMAG 2004/23	ONS Mid-year Population Estimates: 1991 to 2003	John Hollis/ Georgia Hay
DMAG 2004/24	Fertility of Ethnic Groups in London, 2002/03	Ed Klodawski

If you would like copies of previous briefings, please contact Jackie Maguire at the GLA, [jackie.maguire@london.gov.uk](mailto:jackie.maguire@london.gov.uk)

## Contact details for the Data Management and Analysis Group are as follows:

**Rob Lewis (020 7983 4652)** is **Head of the Data Management and Analysis Group**. [rob.lewis@london.gov.uk](mailto:rob.lewis@london.gov.uk)

**Bill Armstrong (020 7983 4653)** works in the **Census Team** with particular responsibilities for **commissioned tables, workplace data** and **mapping**. [bill.armstrong@london.gov.uk](mailto:bill.armstrong@london.gov.uk)

**Baljit Bains (020 7983 4613)** works in the **Demography Team** and is responsible for **ethnic demography**, including **ethnic group projections**. [baljit.bains@london.gov.uk](mailto:baljit.bains@london.gov.uk)

**Gareth Baker (020 7983 4349)** works in the **GIS Team**. [gareth.baker@london.gov.uk](mailto:gareth.baker@london.gov.uk)

**Shen Cheng (020 7983 4889)** works on **Education data** and is responsible for **school roll projections**. [shen.cheng@london.gov.uk](mailto:shen.cheng@london.gov.uk)

**Hywel Davies (020 7983 4696)** is responsible for the **SASPAC** project and for the development of **GIS** work. [hywel.davies@london.gov.uk](mailto:hywel.davies@london.gov.uk)

**David Ewens (020 7983 4656)** is responsible for **Education research and data analysis**. [david.ewens@london.gov.uk](mailto:david.ewens@london.gov.uk)

**Giorgio Finella (020 7983 4328)** works in the **Census Team**. [giorgio.finella@london.gov.uk](mailto:giorgio.finella@london.gov.uk)

**Dennis Grenham (020 7983 4532)** works mostly on **statistical compendia, election statistics** and **special publications**. [dennis.grenham@london.gov.uk](mailto:dennis.grenham@london.gov.uk)

**Georgia Hay (020 7983 4347)** works in the **Demography Team** and is responsible for **ward level projections**, the **Demography Extranet** and **borough liaison**. [georgia.hay@london.gov.uk](mailto:georgia.hay@london.gov.uk)

**John Hollis (020 7983 4604)** is responsible for the work of the **Demography Team** and the **Social Exclusion Team**, and particularly for **demographic modelling**. [john.hollis@london.gov.uk](mailto:john.hollis@london.gov.uk)

**Eileen Howes (020 7983 4657)** is responsible for the work of the **Census Team**. [eileen.howes@london.gov.uk](mailto:eileen.howes@london.gov.uk)

**Ed Klodawski (020 7983 4694)** works in the **Demography Team**. His post is joint with the **London Health Observatory** and specialises in **ethnic** and **health** issues. [edmund.klodawski@london.gov.uk](mailto:edmund.klodawski@london.gov.uk)

**Rachel Leeser (020 7983 4699)** works in the **Social Exclusion Team** with particular responsibilities for **indicators** and **income data**. [rachel.leeser@london.gov.uk](mailto:rachel.leeser@london.gov.uk) (maternity leave until late 2005)

**Alan Lewis (020 7983 4348)** is a member of the **SASPAC Team**. [alan.lewis@london.gov.uk](mailto:alan.lewis@london.gov.uk)

**Jackie Maguire (020 7983 4655)** is responsible to the Group Head and co-ordinates the **administrative and financial** work of the Group. [jackie.maguire@london.gov.uk](mailto:jackie.maguire@london.gov.uk)

**Michael Minors (020 7983 4654)** is responsible for the work of the **General Statistics and Education Team**. [michael.minors@london.gov.uk](mailto:michael.minors@london.gov.uk)

**Gareth Piggott (020 7983 4327)** works in the **Census Team**. [gareth.piggott@london.gov.uk](mailto:gareth.piggott@london.gov.uk)

**Lorna Spence (020 7983 4658)** is a member of the **Social Exclusion Team**, with particular responsibilities for the **Labour Force Survey** and **benefits data**. [lorna.spence@london.gov.uk](mailto:lorna.spence@london.gov.uk)

**Lovedeep Vaid (020 7983 4699)** works in the **Social Exclusion Team** with particular responsibilities for **indicators** and **income data**. [lovedeep.vaid@london.gov.uk](mailto:lovedeep.vaid@london.gov.uk) (maternity cover until late 2005)

Please use the above descriptions in deciding whom to contact to assist you with your information needs.