

**Data Management and Analysis Group**

**DMAG Annual Review 2003**

**DMAG Briefing 2004/4  
February 2004**

**Jackie Maguire  
Rob Lewis**

**ISSN 1479-7879**

# **DMAG Briefing 2004/4**

**February 2004**

## **DMAG ANNUAL REVIEW 2003**

For more information please contact:

Rob Lewis / Jackie Maguire  
Data Management and Analysis Group  
Greater London Authority  
City Hall (5 East)  
The Queen's Walk  
London SE1 2AA

Tel: 020 7983 4652 / 4655

[rob.lewis@london.gov.uk](mailto:rob.lewis@london.gov.uk)

[jackie.maguire@london.gov.uk](mailto:jackie.maguire@london.gov.uk)

Copyright © Greater London Authority, 2004

ISSN 1479-7879

# DMAG ANNUAL REVIEW 2003

This briefing provides an overview of the work of DMAG for the calendar year 2003. Its aim is to give a flavour of the activities of the Group over that period.

## CONTENTS

Introduction .....	1
Ongoing Work.....	2
Highlights .....	3
Publications .....	4
Who Uses DMAG – And What Type Of Material Do They Want? .....	4
Meetings, Conferences And Consultations .....	6
Income Generation .....	7
Future Work .....	7
Appendix 1: DMAG Briefings 2003 .....	10

## **ANNUAL REVIEW 2003**

### **Data Management and Analysis Group (DMAG)**

#### **INTRODUCTION**

DMAG is a team of statisticians and researchers within Corporate Services at the GLA, providing a range of data and analytical services to people within the GLA group and external users. DMAG is structured into four teams (although much work is cross-disciplinary):

- Census
- Demography and Social Exclusion
- General Statistics and Education
- GIS and SASPAC

The primary role of DMAG is the management, development and analysis of data and information, mainly using government generated datasets such as the Census of Population, the Labour Force Survey, Ordnance Survey cartographic material, unemployment data, population estimates, welfare benefits data, and the Pupil Level Annual School Census.

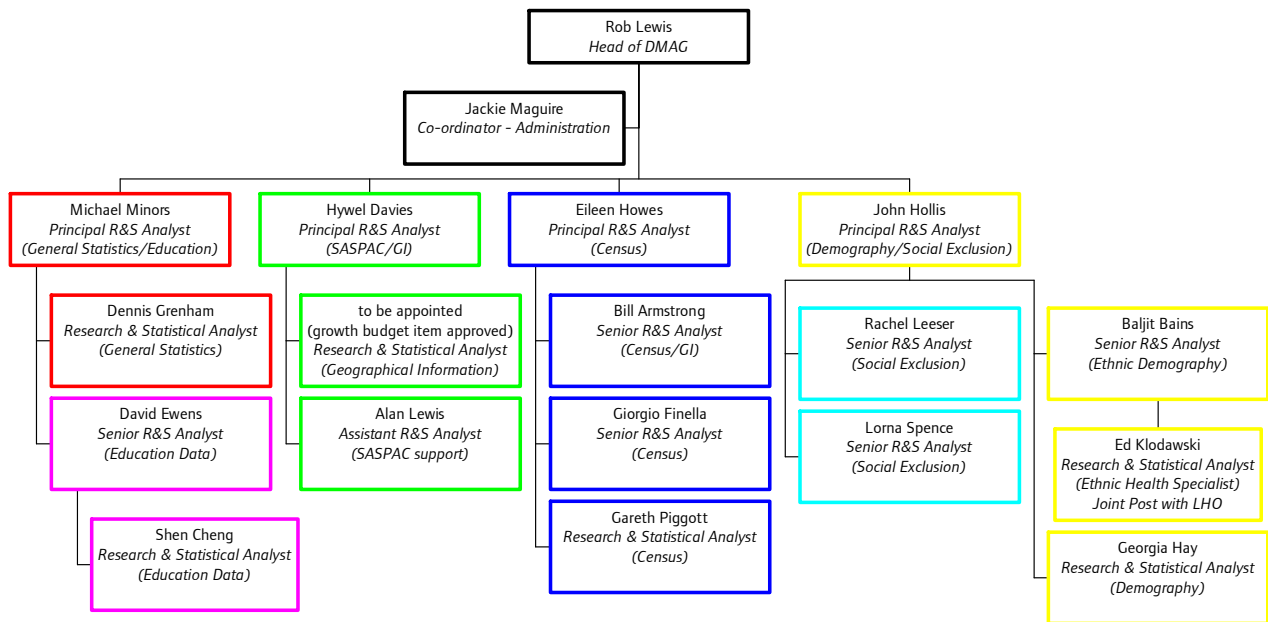
DMAG has 18 staff and the Group boast a high level of technical expertise in these and other datasets. We provide analysis and act as a provider and guide to complex sources. We also aim to contribute to the development of statistics and its uses, primarily within the GLA and functional bodies, but also via involvement and contact at all levels (local, regional and national government, and via professional groupings).

DMAG staff contribute to the wider debates in the statistical and research communities on the role, provision and delivery of data into the public domain. DMAG also maintains contacts in the academic and business sectors, providing an opportunity to cross-fertilise and keep up to date with the latest applications and innovations.

The work of DMAG is often an unseen hand in the work of the other parts of the GLA – examples include:

- vital population projections underlying the London Plan and the Mayor's Sustainable Development Strategy
- compiling data on the cultural and ethnic composition of London for the annual Respect conference
- producing the maps on the wall of the Mayor's meeting room
- providing background information and maps for Mayoral visits
- advising and assisting HR colleagues on appropriate and valid equality targets

2003 has been a period of growth for DMAG – there have been new posts in the areas of the Census, SASPAC, Education and Social Exclusion, funded by a combination of successful growth bids within the GLA's funding mechanism and as a result of DMAG's own income generation work, much of it Census-related. The expansion of DMAG has resulted in a series of minor reshuffles within the Group, and the current structure is shown below:



## ONGOING WORK

An essential part of DMAG's work/activities is the "meat and potatoes" task of managing and analysing data sets. The following is a snapshot of the ongoing work in 2003 of each of the teams in DMAG.

### Census

- Processing (and in some cases reprocessing) 2001 Census data received from ONS
- Framework files and data supplied to members of Census Consortium
- Provision of advice and support to colleagues at the GLA, and members of the Census Consortium
- Continued analysis of 2001 Census data, the main output being *DMAG Briefings* series
- Continued negotiations with ONS on provision of Specially Commissioned Tables
- Training courses on SASPAC and the Census

### Demography and Social Exclusion

- Updating demographic models with data from the 2001 Census – particularly the redevelopment of the ethnic group projection model
- Providing a comprehensive data and analysis service to the GLA family, the London boroughs and the Health Services in London. This includes support for the Mayor's Strategies and events and TfL transport planning
- 2003 round of Demographic Projections
- Maintaining and improving the Demography and Social Exclusion extranet sites
- Indicative population projections based on the Thames Gateway development proposals (LDA/GLA)
- Linking health data sets into GLA modelling, using the ongoing relationship with the London Health Observatory

## General Statistics and Education

- Development and maintenance of the London Data Archive (the dataset that underpins part of the *Focus on London* series)
- Development and maintenance of DMAG's extranet sites
- Producing school rolls projections on a contract basis for 19 London Boroughs
- PLASC / London Pupil Dataset – a new annual resource consisting of education-related material from DfES, GLA and other sources.

## GIS and SASPAC

- DMAG co-ordinate a Service Level Agreement on behalf of the GLA, TfL and the LDA with Ordnance Survey, to provide high-level mapping and boundary data worth £750,000 pa. Uses of this material include TfL's Journey Planner, with Land-Line and other OS data underpinning the route planners on the site.
- Ongoing development with TG colleagues of a GLA GIS system which should bear fruit in 2004
- Development of SASPAC, the leading package for analysis of the 2001 Census, and servicing 350 organisations across the UK who subscribe to SASPAC. Users include the Department of Health, the Department for Transport, the Office for National Statistics, the General Register Office Scotland, academics, 225 Local Authorities and 100 Health Authorities.
- Providing around 50 days of training courses across the UK for SASPAC users

## HIGHLIGHTS

- February 13<sup>th</sup> saw the release of Key Statistics from the 2001 Census. This provided the first real detailed data on a wide range of Census variables including ethnicity, living arrangements of Londoners, qualification, travel to work, household composition, country of birth, and for the first time, religion.
- The GLA hosted the launch on June 25<sup>th</sup>, of a national initiative, the publication *Focus on London 2003*. This is the definitive compendium of statistics for the region covering topics such as the environment, the population, the economy, the labour market and London Government. The Evening Standard called it "a fascinating snapshot of the lives of 7.2 million Londoners". This edition was the result of collaboration between the GLA, the Office for National Statistics, the London Development Agency, and the Government Office for London. The GLA's contribution was co-ordinated by DMAG, who also organised the launch on behalf of the partners. Hosted by Nicky Gavron, platform speakers included Len Cook, the National Statistician, Keith Hill, the Minister for London and Nick Sharman, then Director of Operations and Local Strategies at the LDA.
- DMAG, in partnership with Human Resources and the Technology Group, was instrumental in establishing an in-house training facility at City Hall, which has been heavily used and is a much-valued resource.

- In the area of Demography, the team was involved in the Examination in Public (EIP) for the draft *London Plan*. At the EIP in April, demographic projections from DMAG's demographers were exposed to searching scrutiny and came through with flying colours.
- In November, members of Local Authorities across the country attended the GLA's Respect conference, and received two DMAG Briefings relating to ethnic diversity in London and more widely.
- Over the course of 2003, DMAG produced twenty-nine *Briefings*, with their distinctive red covers. The full list of *DMAG Briefings* (see Appendix 1) illustrates the diversity of the work and output of the group.

## PUBLICATIONS

As mentioned above, the publications output of DMAG's work has largely been through the DMAG Briefings series. Available in hard copy or electronically, many can also be accessed via the intranet, extranet and Internet. The series aims to be of interest to a wide constituency of 'readers': policy makers and analysts within the GLA, technical officers and specialist managers within the boroughs, pan-London bodies, voluntary groups in London, and beyond. A full list of briefings published in 2003 is available in Appendix 1 of this report. In addition to the Briefings and *Focus on London*, the group also produced other publications in its own right and contributed to others generated by the GLA, including:

- London Borough Council Elections 2 May 2002
- SDS Technical Report 23: GLA Population and Household Forecasts based on the First Results from the 2001 Census
- Planning in London 'Getting to Grips with London's Demography'
- LARIA News 'Census Update' – February, June and October
- Capital Woman

The technical nature of DMAG's work lends itself to the medium of electronic publishing as much of our output is presented using spreadsheets. As a consequence, an increasing proportion of our work is now distributed via CDs and the extranet. At present this method of dissemination is largely reserved for data supplied to the functional bodies and the boroughs, but we have invested in equipment and training in the Group to enable us to make full use of electronic and digital media to get our work to as wide an audience as possible. Examples include *Focus on London*, available at <http://www.statistics.gov.uk/london/> and a number of *Briefings* eg <http://www.london.gov.uk/gla/publications/factsandfigures/DMAG-Briefing-06.pdf>

## WHO USES DMAG – AND WHAT TYPE OF MATERIAL DO THEY WANT?

There are over 400 users registered to access our secure extranet sites. This is despite a range of IT-related problems that have made this service less than ideal. We envisage some degree of promotional activity and increased use once ongoing improvements have been realised.

These users are predominantly in the GLA (53), the Functional Bodies (62), and the London Boroughs (222). The remainder are largely health and education organisations, but also include users in:

- DWP, DCMP and the Prime Minister's Strategy Unit
- Audit Commission
- BBC
- LSE and UCL

Another indication of use can be drawn from an analysis of enquiries received by the team. We undertake a quarterly analysis, and although it only covers one aspect of our work, it sheds light on the weight of work and the range of users.

DMAG runs a national help-desk for SASPAC, and receives about one hundred enquiries per week. These are clearly not typical, and are therefore omitted from the analysis below. The rest of the team receive just over 200 enquiries per week, and the topics break down as shown below, with the Census and demographic work accounting for the largest slices.

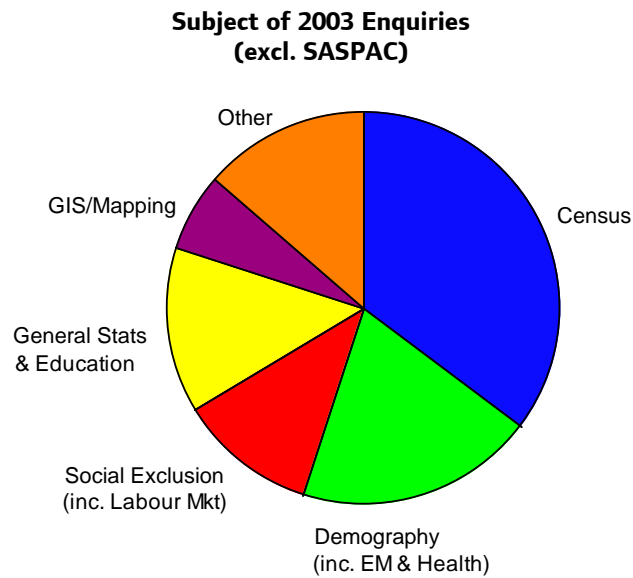


Fig. 1

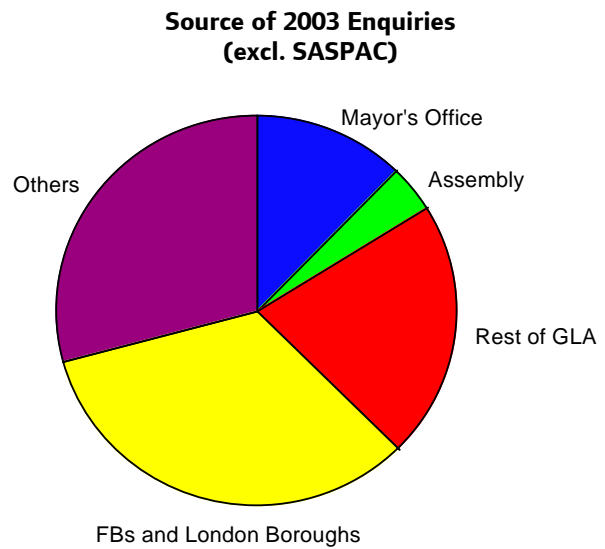


Fig. 2

The 'Other' category in Figure 1 includes such enquiries as "How do I get access to your data extranets?" "who do I talk to at ONS about...?" or "have you got any plotter paper", as well as some uncategorisable enquiries from the public or journalists.

The wide use of DMAG material made by specialist staff outside the GLA is mirrored in the high numbers of enquiries (shown in Figure 2) from the functional bodies and London Boroughs, and from 'others' – which includes regional and national government, local authorities outside London, the health sector, academics, the media, the business and commercial sectors, and the general public. The analysis also indicates that the average enquiry from within the GLA takes longer than those emanating from external sources.

## **MEETINGS, CONFERENCES AND CONSULTATIONS**

### *Interfacing with GLA, functional bodies and boroughs:*

DMAG holds regular topic-based meetings with data users within the GLA, and in functional bodies, London boroughs and pan-London organisations. These groups meet 3 or 4 times a year and allow DMAG to disseminate its work to representatives of relevant users. They also provide an opportunity for users to network, to give feedback on our work, and to discuss up and coming issues in the public sector statistics and research field. Currently, DMAG has three main user groups:

- the Census Users Group (CUG)
- the Demography Liaison Group (DLG)
- the GLA School Rolls Group (open to subscribing authorities)

Two further groups are planned – a Social Exclusion Data Users Group (SEDUG) and a Geographic Information Group (GIG) – and more information is given under ‘Future Work’. Regular meetings have been instituted with GLA colleagues working on Economic data, and DMAG representatives have addressed meetings of the GLA/Borough Research and Information Group.

Towards the end of the year, the Mayor’s Management Board received a paper on the Census Consortium, and Len Cook, the National Statistician, gave a presentation to the GLA Integration Unit on proposals for joint ONS/GLA work on a mid-decade ‘mini-census’ or survey to improve population estimates.

### *Interfacing with government, professional bodies, academics and others:*

DMAG has a number of national and international experts in the fields of demography, Census and GIS and as a consequence staff are often asked to participate in conferences as speakers and to provide expert technical advice for local, regional and national consultation exercises. In addition DMAG staff are encouraged to participate in appropriate professional and specialist bodies.

Staff have attended or presented at numerous conferences and seminars including the Local Authorities Research and Intelligence Association, British Society for Population Studies (several presentations), the Central and Local Government Information Partnership (CLIP), BURISA, the London Health Observatory conference ‘Diversity Counts’, a joint Royal Statistical Society/ONS Census conference, various RSS meetings, the British Educational Research Association, and the Royal Geographical Society. Internally, presentations on the Census and the London Plan have been made to the Assembly’s Public Services Committee, and to GLA staff at a lunchtime session.

In a year when ONS consultation reached fever pitch, DMAG have coordinated or contributed to several consultation responses. The ONS items included the Population Estimates Review, the 2011 Census Proposals, the Integrated Population Statistics System, and several more. Other consultations in which DMAG staff participated were the ODPM Index of Deprivation 2000/2004, the Statistics Commission investigation of the 2001 Census in Westminster, and the Allsopp Review on Regional Statistics.

## INCOME GENERATION

The bulk of DMAG's funding comes from the core GLA, and our remit includes the provision of core data and services free to the Functional Bodies, London Boroughs and ALG. Nevertheless a significant element is raised by selling goods and services to external clients. This activity enables DMAG to fund - partly and in some cases wholly - aspects of its work, such as SASPAC, and School Roll Projections. Another major source of funding is the Information Scheme based around the Census, whereby DMAG co-ordinates data, hardware, software and analysis for a range of organisations including the London Boroughs, Functional Bodies and London Health Observatory (on behalf of all London health authorities).

## FUTURE WORK

2004 sees a full programme of work for DMAG. Our activity in core areas such as analysis of 2001 Census data and demographic modelling will continue with (amongst other things) the further development of our ethnic group projection model, and a major programme of commissioning special tables from the Census. Also our involvement in national level initiatives will continue with staff contributing to the Office of the Deputy Prime Minister's Index of Deprivation 2004.

Work is also planned on an international comparison between London and Paris using data due to be released by Eurostat as part of Urban Audit II. Urban Audit II identified key variables that can be used to make comparison between urban areas throughout Europe.

We will be instituting two new data users groups. The first will be the Social Exclusion Data Users Group (SEDUG), which will meet 3 times a year, and be a forum for the exchange of information on issues and initiatives relevant to data in the area of social exclusion in London. The second will be a Geographic Information Group (GIG) - initially internal to the GLA, but looking to expand to users in the functional bodies and beyond. 2004 should witness a 'great leap forward' in GIS capacity, as the preparatory work undertaken by DMAG, the Technology Group and others, bears fruit.

In April the GLA will be hosting the seminar *What is London?*, as part of the London Governance review. Staff in DMAG will be contributing to the event by producing a series of maps showing London's current administrative boundaries, illustrating the evolution of London over the past millennium. Spring will also see the publication of the London Education Briefing, a compendium of facts and figures on a range of education data for London, from pre-school to higher education.

Anticipating the Mayoral and Assembly Elections in June 2004, DMAG plans to identify and bring together a number of data and information sources to meet the needs of internal and external enquiries. They will include previous work by the Group on the 2001 General Election and the 2002 London Borough Elections, and two new Briefings - *Borough Demographic Profiles* and *Constituency Demographic Profiles*.

The Demography team will be undertaking further work on London's ward level demography to ensure that it takes full account of borough information on future housing development. We also intend to link Annual School Census data, and any other emerging datasets, into GLA demographic modelling. This is particularly relevant for ethnic demography.

In the same field, DMAG will be undertaking work with colleagues in the Policy and Partnership Directorate on the development of methods to estimate the asylum

seeker/refugee/new migrant populations within London. DMAG will also be attempting to help establish a national race data users forum to bring together users of race and ethnicity statistics within the research community to discuss common approaches and best practice.

Also planned this year is a major revamp of the GLA's claimant count unemployment model. This model generates ward level claimant count rates for all the London boroughs on a monthly basis and is widely used by the GLA and partner agencies. The model will be based on new ward boundaries and take on board more up to date labour force estimates and will move over to new ward boundaries.

We will continue to develop the DMAG Briefings series, and during 2004 our publications output will include Briefings on the following subjects:

- Educational Attainment (2001 Census)
- Workers in London (2001 Census)
- Economic Activity (2001 Census)
- A Ward Atlas of London (2001 Census)
- A number of reports on the ethnic and religious diversity of London, including Irish, Bangladeshi and Muslim communities. (2001 Census)
- Alternative Measures of Unemployment
- Measures of Income
- Housing in London (2001 Census)
- Parents and Work
- Borough Demographic Profiles
- Constituency Demographic Profiles
- Paycheck income
- Country of Birth and Labour Market Outcomes
- Data Sources for Asylum Seekers and New Immigrants



## DMAG Briefings 2003

### Briefing

### Author

#### **Disabled people and the labour market**

This briefing presents annual Labour Force Survey data for London on the subject of disabled people and the labour market. The data refers to the period 2001/2 and includes analysis on earnings, occupation, qualifications, economic activity rates, and unemployment. *Ref. DMAG 2003/1*

Lorna Spence

#### **2001 Borough Demographic Profiles**

This briefing provides a summary of demographic and related data for each local authority in Greater London. The profiles provide an overview of the population in each area by combining a range of data on the population, the electorate, ethnic minority populations, education statistics and labour force statistics. *Ref. DMAG 2003/2*

Baljit Bains  
Iryna Pylypchuk

#### **2002 Round of Demographic Projections**

This briefing represents the key inputs and modelling processes involved in producing the 2002 Round of GLA Demographic Projections. In particular the report describes how these projections are the first to consider the impact of results from the 2001 Census. *Ref. DMAG 2003/3*

John Hollis  
Baljit Bains

#### **Greater London Demographic Review 2001**

The purpose of this briefing is to represent the latest demographic statistics for Greater London that have been made available by a range of data providers including, ONS, ODPM, DfES and the GLA. Most data refer to 2001. *Ref. DMAG 2003/4*

Baljit Bains  
Iryna Pylypchuk

#### **Census Information Note CIN 2003-1**

A quarterly newsletter for members of the Census Consortium to up date them on Census work. *Ref. DMAG 2003/5*

Eileen Howes

#### **Third country nationals living in London 2000/01**

This briefing presents a profile of third country nationals (non-EU citizens) living in London. The analysis is based on Labour Force Survey data for 2000/01 and presents a wide range of demographic and socio-economic data on this group of Londoners. *Ref. DMAG 2003/6*

Lorna Spence

#### **2001 Census Key Statistics: Initial summary of Results**

This briefing contains some initial results from the first release of Key Statistics from the 2001 Census, published on 13 February 2003. *Ref. DMAG 2003/7*

Eileen Howes

#### **2001 Census Key Statistics: Household Variables**

This briefing concentrates on analysing 2001 Census Key Statistics Variables relating to household spaces. These data were released by the ONS in February 2003 and relate to Census Day, 29<sup>th</sup> April 2001. *Ref. DMAG 2003/8*

John Hollis

## Briefing

## Author

### **2001 Census Key Statistics: Ethnicity, religion and country of birth**

Eileen Howes

This is preliminary briefing based mainly on the 2001 Census Key Statistics published in February 2003 for boroughs and in June 2003 for wards. It uses data from the 2001 Census questions on ethnic group and country of birth to give a first brief analysis of London's culturally diverse population. *Ref. DMAG 2003/9*

### **Household Forecasts based on 2001 Census Key Statistics**

John Hollis

This briefing presents a set of household forecasts prepared for the *London Plan* Examination in Public. 2001 Census results on households and household spaces are incorporated for the first time. The figures are compared with previous projections used in the *Draft London Plan*. *Ref. DMAG 2003/10*

### **2001 Census: Copyright and Licensing for Census users**

Rachel Leeser

This briefing informs and reminds data users that all Census information is Crown copyright and details the various (free) licence arrangements for any person or organisation wishing to publish Census data. Similarly, geographical information has copyright restrictions, which are detailed in this document. *Ref. DMAG 2003/11*

### **Women and the Labour Market**

Lorna Spence

This briefing profiles London's women's and their role in the labour market and is based on Labour Force Survey data for 2001/02. Analysis includes data on occupation, industry, earning, and explores the key factors that influence women's participation in the labour market. *Ref. DMAG 2003/12*

### **2001 Census Key Statistics: Means of travel to work**

Eileen Howes

This briefing looks at how comparisons between 2001 and 1991 Census data and measures of change over the decade may be estimated for the travel to work question. *Ref. DMAG 2003/13*

### **2001 Census Key Statistics: People, Families, Households**

Rachel Leeser

This briefing presents an analysis of 2001 Census Key Statistics providing an introduction to some of the complex arrangements called households in which Londoners live. It also includes some information about households and work and the economic position of lone parents. *Ref. DMAG 2003/14*

## Briefing

## Author

### **Census Information Note CIN 2003-2**

A quarterly newsletter for members of the Census Consortium to up date them on Census work. *Ref. DMAG 2003/15*

Eileen Howes

### **2001 Census Key Statistics: Health Indicators**

This briefing examines the data from the 2001 Census Key Statistics associated with health issues. The Census contained four questions that investigated health, and the resulting output gives data on the topics of general health, limiting long term illness, permanently sick/disabled and provision of unpaid care. It includes thematic maps, charts and tables and contains calculations of overall health rankings for areas. *Ref. DMAG 2003/16*

Gareth Piggott

### **Public sector employment in London**

This briefing presents data about Londoners working in the public sector and is based on Labour Force Survey data 2001/02. It includes analysis of public sector workers by gender, ethnicity, occupation, industry and work pattern. *Ref. DMAG 2003/17*

Lorna Spence

### **Trade union membership in London**

This briefing presents data on trade union members and is based on quarterly Labour Force Survey data for Autumn 2001. It profiles the workplace, employment and individual characteristics of London's trade union members. *Ref. DMAF 2003/18*

Lorna Spence

### **Fertility of Ethnic Groups in London**

This briefing describes the derivation of up-to-date Age-Specific Fertility Rate structures and total Fertility Period Rates for the whole London population and each of its' ethnic groups. The analysis is based on the 2001 Census and information on deliveries from the Department of Health's Hospital Episode Statistics (HES) database. *Ref. DMAG 2003/19*

Ed Klodawski

### **ONS 2001 (revised) and 2002 Mid-year Population Estimates**

This briefing demonstrates the recently further- revised population estimates, the Mid-2002 population estimates and their impact on the London Plan. *Ref. DMAG 2003/20*

John Hollis  
Baljit Bains

### **Workless households with dependent children in London**

This briefing presents data from the 2001 Census concerning households, dependent children and non-employment in London. It includes output area level maps for each London borough and the City of London. *Ref. DMAG 2003/21*

Bill Armstrong  
Declan Gaffney

## Briefing

## Author

### **Mapping Diversity in London: 2001 Census results**

This briefing includes a range of maps for all wards in London illustrating the diversity of London's population. It includes maps and tables based on the percentages in the population in each of the ethnic groups and religions specified in the 2001 Census. *Ref. DMAG 2003/22*

Eileen Howes

### **2001 Census: Ethnic groups in London and other districts**

This briefing presents statistics on ethnic and religious groups for London and other districts from the 2001 Census. It is mainly in the form of tabulations. *Ref. DMAG 2003/23*

Eileen Howes  
Giorgio Finella

### **Cross-border pupil mobility. An analysis of the 2002 London Pupil Dataset**

The briefing compares the characteristics of pupils who live and attend school in the same LEA with the characteristics of pupils who live in one LEA and attend school in another. A key theme is the extent to which schools' choice of pupils and/or parents' choice of schools involves social selection. *Ref. DMAG 2003/24*

David Ewens

### **Integrating the 2001 Census into the GLA Demographic Models**

This briefing sets out the planned timetable of actions required to fully update the GLA suite of demographic models to account for all relevant results from the 2001 Census and associated datasets. *Ref. DMAG 2003/25*

John Hollis

### **Unemployment in London: An analysis of 2001 Census data**

This briefing presents data on unemployment in London and is based on 2001 Census results. It measures unemployment levels across the capital, profiles those groups most at risk of unemployment and explores factors associated with unemployment. *Ref. DMAG 2003/26*

Lorna Spence

### **Census Information Note CIN 2003-3**

A quarterly newsletter for members of the Census Consortium to up date them on Census work. *Ref. DMAG 2003/27*

Eileen Howes

### **Census Information Note CIN 2003-4**

A quarterly newsletter for members of the Census Consortium to up date them on Census work. *Ref. DMAG 2003/28*

Giorgio Finella

### **Greater London Demographic Review 2002**

This briefing gives an up-to-date overview for London, drawing on a number of sources, and includes fertility and mortality, education, electoral data and ethnicity, as well as the recently released mid-2002 population estimates. *Ref. DMAG 2003/29*

Georgia Hay

For copies of DMAG Briefings, please contact Jackie Maguire at the GLA,  
[jackie.maguire@london.gov.uk](mailto:jackie.maguire@london.gov.uk)

## Regular Briefings from the GLA Data Management and Analysis Group

The 2003 and 2004 DMAG Briefings:

DMAG 2003/1	Disabled people and the labour market	Lorna Spence
DMAG 2003/2	2001 Borough Demographic Profiles	Baljit Bains/ Iryna Pylypchuk
DMAG 2003/3	2002 Round of Demographic Projections	John Hollis/ Baljit Bains
DMAG 2003/4	Greater London Demographic Review: 2001	Baljit Bains/ Iryna Pylypchuk
DMAG 2003/5	Census Information Note CIN 2003-1	Eileen Howes
DMAG 2003/6	Third country nationals living in London 2000/01	Lorna Spence
DMAG 2003/7	2001 Census Key Statistics: Initial summary of results	Eileen Howes
DMAG 2003/8	2001 Census Key Statistics: Household variables	John Hollis
DMAG 2003/9	2001 Census Key Statistics: Ethnicity, religion and country of birth	Eileen Howes
DMAG 2003/10	Household Forecasts based on 2001 Census Key Statistics	John Hollis
DMAG 2003/11	2001 Census: Copyright and Licensing for Census users	Rachel Leeser /Hywel Davies
DMAG 2003/12	Women and the Labour Market	Lorna Spence
DMAG 2003/13	2001 Census Key Statistics: Means of travel to work	Eileen Howes
DMAG 2003/14	2001 Census Key Statistics: People, Families and Households	Rachel Leeser
DMAG 2003/15	Census Information Note CIN 2003-2	Eileen Howes
DMAG 2003/16	2001 Census Key Statistics: Health Indicators	Gareth Piggott
DMAG 2003/17	Public sector employment in London	Lorna Spence
DMAG 2003/18	Trade union membership in London	Lorna Spence
DMAG 2003/19	Fertility of Ethnic Groups in London	Ed Klodawski
DMAG 2003/20	ONS 2001 (revised) and 2002 Mid-year Population Estimates	John Hollis/ Baljit Bains
DMAG 2003/21	Workless Households with dependent children in London: Output area maps	Declan Gaffney/ Bill Armstrong
DMAG 2003/22	Mapping Diversity: 2001 Census results	Eileen Howes
DMAG 2003/23	2001 Census: Ethnic Groups in London and other districts	Eileen Howes/ Giorgio Finella
DMAG 2003/24	Cross-border pupil mobility	David Ewens
DMAG 2003/25	Integrating the 2001 Census into the GLA Demographic Models	John Hollis
DMAG 2003/26	Unemployment in London: An analysis of 2001 Census data	Lorna Spence
DMAG 2003/27	Census Information Note CIN 2003-3	Eileen Howes
DMAG 2003/28	Census Information Note CIN 2003-4	Giorgio Finella
DMAG 2003/29	Greater London Demographic Review: 2002	Georgia Hay
DMAG 2004/1	2003 Round Ward Population Projections	Georgia Hay
DMAG 2004/3	Borough Demographic Profiles	Georgia Hay
DMAG 2004/4	DMAG Annual Review 2003	Jackie Maguire/ Rob Lewis

If you would like copies of previous briefings, please contact Jackie Maguire at the GLA, [jackie.maguire@london.gov.uk](mailto:jackie.maguire@london.gov.uk)

## Contact details for the Data Management and Analysis Group are as follows:

**Rob Lewis (020 7983 4652)** is **Head of the Data Management and Analysis Group**. [rob.lewis@london.gov.uk](mailto:rob.lewis@london.gov.uk)

Bill Armstrong (020 7983 4653) works in the **Census Team** with particular responsibilities for **commissioned tables, workplace data** and **mapping**. [bill.armstrong@london.gov.uk](mailto:bill.armstrong@london.gov.uk)

Baljit Bains (020 7983 4613) works in the **Demography Team** and is responsible for **ethnic demography**, including **ethnic group projections**. [baljit.bains@london.gov.uk](mailto:baljit.bains@london.gov.uk)

**Shen Cheng (020 7983 4889)** works in the **Education Team** and is responsible for school roll projections. [shen.cheng@london.gov.uk](mailto:shen.cheng@london.gov.uk)

**Hywel Davies (020 7983 4696)** is responsible for the **SASPAC** project and for the development of **GIS** work. [hywel.davies@london.gov.uk](mailto:hywel.davies@london.gov.uk)

**David Ewens (020 7983 4656)** is responsible for **education research and data analysis** and school roll projections. [david.ewens@london.gov.uk](mailto:david.ewens@london.gov.uk)

**Georgia Hay (020 7983 4347)** works in the **Demography Team** and is responsible for **ward level projections**, the **Demography Extranet** and **borough liaison**. [georgia.hay@london.gov.uk](mailto:georgia.hay@london.gov.uk)

**Giorgio Finella (020 7983 4328)** works in the **Census Team**. [giorgio.finella@london.gov.uk](mailto:giorgio.finella@london.gov.uk)

**Dennis Grenham (020 7983 4532)** works mostly on **statistical compendia, election statistics** and **special publications**. [dennis.grenham@london.gov.uk](mailto:dennis.grenham@london.gov.uk)

**John Hollis (020 7983 4604)** is responsible for the work of the **Demography Team** and the **Social Exclusion Team**, and particularly for **demographic modelling**. [john.hollis@london.gov.uk](mailto:john.hollis@london.gov.uk)

**Eileen Howes (020 7983 4657)** is responsible for the work of the **Census Team**. [eileen.howes@london.gov.uk](mailto:eileen.howes@london.gov.uk)

**Ed Klodawski (020 7983 4694)** works in the **Demography Team**. His post is joint with the **London Health Observatory** and specialises in **ethnic** and **health** issues. [edmund.klodawski@london.gov.uk](mailto:edmund.klodawski@london.gov.uk)

**Rachel Leeser (020 7983 4699)** works in the **Social Exclusion Team** with particular responsibilities for **indicators** and **income data**. [rachel.leeser@london.gov.uk](mailto:rachel.leeser@london.gov.uk)

**Alan Lewis (020 7983 4348)** is a member of the **SASPAC Team**. [alan.lewis@london.gov.uk](mailto:alan.lewis@london.gov.uk)

**Jackie Maguire (020 7983 4655)** is responsible to the Group Head and co-ordinates the administrative and financial work of the Group. [jackie.maguire@london.gov.uk](mailto:jackie.maguire@london.gov.uk)

**Michael Minors (020 7983 4654)** is responsible for the work of the **General Statistics and Education Team**. [michael.minors@london.gov.uk](mailto:michael.minors@london.gov.uk)

**Gareth Piggott (020 7983 4327)** works in the **Census Team**. [gareth.piggott@london.gov.uk](mailto:gareth.piggott@london.gov.uk)

**Lorna Spence (020 7983 4658)** is a member of the **Social Exclusion Team**, with particular responsibilities for the **Labour Force Survey** and **benefits data**. [lorna.spence@london.gov.uk](mailto:lorna.spence@london.gov.uk)

Please use the above descriptions in deciding whom to contact to assist you with your information needs.