

International Migration 2006: First Release

Background

On 15th November 2007 ONS published a *News Release* on the 2006 international migration data at national, country and GOR levels. A more detailed report will follow in March 2008 as part of the ONS *International Migration MN series*.

The press release and tables can be downloaded here:

- <http://www.statistics.gov.uk/pdfdir/emig1107.pdf>
- <http://www.statistics.gov.uk/statbase/Product.asp?vlnk=15053>

Migrants are here defined as persons intending to stay in the UK, or remain outside the UK, for at least a year.

Results

In 2006 there were a record number of people leaving the UK to live overseas, 400 thousand. An estimated 591 thousand people arrived to live in the UK leaving a net migration to the UK of 191 thousand.

There was a net inflow of 53 thousand more people moving to London from overseas than emigrating. This is the lowest annual net inflow to London since 1997 and may be compared with the average of 81 thousand in the previous five years.

Table 1: 2006 Migration by Country and GOR (thousands)

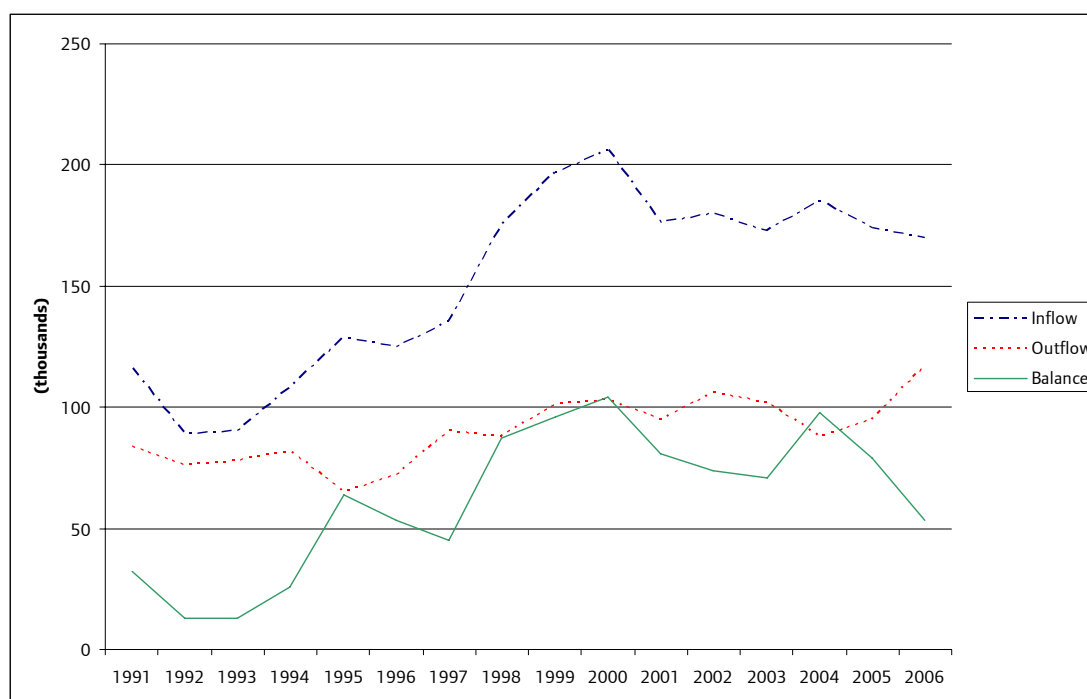
	Inflow	Outflow	Balance
United Kingdom	591	400	191
Great Britain	583	397	186
England and Wales	545	371	174
England	530	361	169
Wales	15	10	5
Scotland	38	26	12
North East	15	14	1
North West	43	36	7
Yorkshire & Humber	49	29	20
East Midlands	37	21	16
West Midlands	33	29	4
East	60	36	23
London	170	117	53
South East	81	53	28
South West	43	26	17

A full table for all countries and GORs for 1991-2006 is given in Appendix Table 1 with complete footnotes.

2006 saw the highest outflow of persons from London since 1991 (when calculations of migration were first made in this way). Inflows to London peaked in 2000 with 206 thousand people arriving in London. This was also the year of the highest net inflow.

In 2006 29% of both inflows to the UK and outflows from the UK were attributable to London. London received 28% of the UK net flow. The averages for the previous five years were 34% of the inflow, 28% of the outflow and 44% of the net flow.

Figure 1: London: international migration flows 1991-2006



Citizenship

There was a further increase in the number of A8 migrants arriving in the UK in 2006 compared with 2005 (92 thousand compared with 76 thousand). In 2005 A8 migrants were 16% of the inflow compared to 13% in 2005.

Table 2: Flows to and from the UK by Citizenship 2004-2006 (thousands)

Year	All citizenships	British	Non-British	European Union 15	European Union A8	European Union 25	Commonwealth			Other foreign
							All	Old	New	
Inflow										
2004	586	88	498	75	53	128	215	73	141	155
2005	563	96	466	70	76	149	180	62	117	137
2006	591	81	510	71	92	167	201	62	139	142
Outflow										
2004	342	195	147	38	3	42	53	33	19	52
2005	359	185	174	39	15	54	60	37	23	59
2006	400	207	194	44	22	66	67	42	24	61
Balance										
2004	+244	-107	+351	+37	+49	+85	+162	+40	+122	+104
2005	+204	-89	+293	+31	+61	+95	+120	+25	+94	+78
2006	+191	-126	+316	+27	+71	+100	+134	+20	+115	+81

A full table for 1991-2006 is given in Appendix Table 2 with complete footnotes.

Appendix Table 1: Migration by Country and GOR 1991-2006 (thousands)

Year	United Kingdom ³	Great Britain	England and Wales	England	Wales	Scotland ⁴	North East	North West	Yorkshire & Humber	East Midlands	West Midlands	East	London	South East	South West
Inflow															
1991	329	325	304	294	10	21	7	17	22	14	16	28	116	53	21
1992	268	265	251	245	6	14	7	22	15	13	10	23	89	50	17
1993	266	264	249	242	7	15	5	16	18	12	16	21	90	48	17
1994	315	313	292	284	8	21	6	22	16	14	20	29	108	51	18
1995	312	311	299	290	10	11	3	20	15	12	19	22	129	54	17
1996	318	315	300	291	8	16	3	18	14	15	26	26	125	46	19
1997	327	324	310	299	12	14	12	21	16	15	17	20	135	41	22
1998	391	390	370	362	8	20	6	25	15	14	18	29	175	60	19
1999	454	451	424	416	8	27	8	21	26	14	22	35	197	68	25
2000	479	474	446	438	8	28	8	25	31	14	23	36	206	69	26
2001	479	475	448	438	10	27	12	30	36	20	32	39	176	66	26
2002	513	508	483	472	11	25	11	39	38	26	35	40	180	70	33
2003	508	504	478	468	10	26	10	36	38	30	34	42	173	71	34
2004	586	582	546	535	12	36	13	48	51	35	34	46	185	76	46
2005	563	557	520	509	11	37	16	40	48	38	32	50	174	70	41
2006	591	583	545	530	15	38	15	43	49	37	33	60	170	81	43
Outflow															
1991	285	280	253	245	8	27	4	22	16	9	21	25	84	43	22
1992	281	275	248	240	8	27	5	20	17	13	16	26	76	44	21
1993	266	262	244	235	9	18	5	17	14	13	15	29	78	48	15
1994	238	234	216	209	6	18	5	15	11	10	13	26	82	31	15
1995	236	232	216	210	6	16	3	24	14	12	13	17	65	40	22
1996	264	260	238	230	8	22	5	21	12	11	20	16	72	56	16
1997	279	272	244	239	6	28	12	12	14	15	13	21	90	43	19
1998	251	245	223	217	6	22	4	17	13	10	12	21	88	34	17
1999	291	286	273	268	5	13	5	26	17	17	18	22	101	45	18
2000	321	315	291	284	7	23	7	20	13	17	17	20	103	64	23
2001	306	302	279	270	9	23	6	22	19	13	17	30	95	50	20
2002	358	354	323	313	9	32	10	22	20	16	24	28	106	60	27
2003	361	354	331	323	8	23	13	24	18	17	23	35	102	53	37
2004	342	338	309	298	11	29	6	34	20	18	16	29	88	54	33
2005	359	356	326	316	10	30	8	39	19	21	19	31	95	57	29
2006	400	397	371	361	10	26	14	36	29	21	29	36	117	53	26
Balance															
1991	+44	+45	+51	+49	+2	-6	+3	-4	+6	+5	-5	+4	+32	+10	-1
1992	-13	-10	+4	+6	-2	-13	+1	+1	-2	-1	-6	-3	+13	+6	-4
1993	-1	+2	+5	+6	-1	-3	-1	-1	+4	-1	+1	-8	+13	-1	+2
1994	+77	+79	+77	+75	+2	+3	+1	+7	+4	+4	+7	+2	+26	+20	+3
1995	+76	+79	+83	+80	+4	-4	-	-5	+1	-	+6	+5	+64	+14	-5
1996	+55	+56	+62	+61	-	-6	-2	-3	+2	+3	+5	+10	+53	-10	+3
1997	+48	+52	+66	+60	+6	-14	-	+9	+2	-	+4	-1	+45	-1	+3
1998	+140	+145	+147	+145	+2	-2	+2	+8	+3	+4	+6	+8	+87	+26	+2
1999	+163	+164	+151	+148	+3	+13	+3	-4	+9	-3	+4	+13	+96	+23	+7
2000	+158	+159	+154	+154	-	+5	+2	+4	+17	-4	+6	+16	+104	+4	+3
2001	+173	+173	+169	+168	+1	+3	+6	+9	+18	+7	+15	+9	+81	+17	+7
2002	+154	+153	+160	+159	+1	-7	+1	+17	+18	+10	+11	+12	+74	+10	+6
2003	+147	+150	+147	+145	+2	+3	-3	+12	+20	+13	+12	+7	+71	+18	-3
2004	+244	+244	+237	+236	+1	+7	+7	+14	+31	+17	+17	+18	+98	+22	+13
2005	+204	+201	+194	+193	+1	+7	+7	+1	+29	+17	+13	+19	+79	+14	+12
2006	+191	+186	+174	+169	+5	+12	+1	+7	+20	+16	+4	+23	+53	+28	+17

© Crown copyright 2007.

1 Based mainly on data from the International Passenger Survey. Includes adjustments for (1) those whose intended length of stay changes so that their migrant status changes; (2) asylum seekers and their dependants not identified by the IPS; and (3) flo

2 These estimates of Total International Migration have been revised using a consistent methodology based primarily on the Labour Force Survey (LFS) to allocate migration to the constituent countries of the UK.

3 Northern Ireland data are included in the UK total but are no longer shown separately. The methodology for Northern Ireland is currently under review as there are factors that make it particularly difficult to estimate international migration into and

4 The estimates for Scotland have been revised. However, international migration estimates for Scotland for the purposes of estimating population change will not be revised and so there may be some differences.

Figures have been rounded independently and may not add to totals

+ Denotes a net inflow figure

- Denotes a net outflow figure

Appendix Table 2: Flows to and from the UK by Citizenship 1991-2006 (thousands)

Year	All citizenships	British	Non-British	European Union ² 15	European Union ² A8	European Union ² 25	Commonwealth			Other foreign ⁴
							All	Old	New ³	
United Kingdom										
Inflow										
1991	329	110	219	53	:	:	85	26	59	82
1992	268	93	175	44	:	:	65	18	46	67
1993	266	86	179	44	:	:	70	23	47	65
1994	315	109	206	50	:	:	80	21	59	76
1995	312	84	228	61	:	:	85	27	58	82
1996	318	94	224	72	:	:	78	29	49	74
1997	327	90	237	71	:	:	90	31	59	76
1998	391	104	287	82	:	:	105	54	51	101
1999	454	115	338	66	:	:	123	55	68	150
2000	479	99	379	63	:	:	147	56	91	169
2001	479	110	370	57	:	:	149	65	84	164
2002	513	97	416	59	:	:	155	63	92	201
2003	508	99	409	64	:	:	167	62	105	177
2004	586	88	498	75	53	128	215	73	141	155
2005	563	96	466	70	76	149	180	62	117	137
2006	591	81	510	71	92	167	201	62	139	142
Outflow										
1991	285	154	130	53	:	:	35	18	17	43
1992	281	155	126	38	:	:	31	18	13	57
1993	266	149	118	40	:	:	34	17	17	43
1994	238	125	113	42	:	:	31	14	17	40
1995	236	135	101	38	:	:	29	18	12	34
1996	264	156	108	44	:	:	32	17	14	32
1997	279	149	131	53	:	:	40	20	20	37
1998	251	126	126	49	:	:	33	20	13	44
1999	291	139	152	59	:	:	41	29	12	52
2000	321	161	160	57	:	:	47	32	15	55
2001	306	158	149	49	:	:	51	32	19	49
2002	358	185	174	52	:	:	58	42	16	64
2003	361	191	171	50	:	:	59	42	17	62
2004	342	195	147	38	3	42	53	33	19	52
2005	359	185	174	39	15	54	60	37	23	59
2006	400	207	194	44	22	66	67	42	24	61
Balance										
1991	+44	-44	+89	-1	:	:	+50	+8	+42	+39
1992	-13	-62	+49	+5	:	:	+34	-	+33	+10
1993	-1	-62	+62	+4	:	:	+36	+6	+30	+22
1994	+77	-16	+94	+9	:	:	+49	+7	+42	+36
1995	+76	-51	+127	+23	:	:	+56	+9	+46	+48
1996	+55	-62	+116	+28	:	:	+47	+12	+35	+41
1997	+48	-59	+107	+18	:	:	+50	+11	+39	+38
1998	+140	-22	+162	+33	:	:	+72	+34	+38	+57
1999	+163	-24	+187	+8	:	:	+82	+26	+56	+98
2000	+158	-62	+220	+6	:	:	+100	+24	+76	+114
2001	+173	-48	+221	+8	:	:	+98	+33	+65	+115
2002	+154	-87	+242	+7	:	:	+97	+21	+77	+137
2003	+147	-91	+238	+14	:	:	+109	+20	+88	+115
2004	+244	-107	+351	+37	+49	+85	+162	+40	+122	+104
2005	+204	-89	+293	+31	+61	+95	+120	+25	+94	+78
2006	+191	-126	+316	+27	+71	+100	+134	+20	+115	+81

© Crown copyright 2007.

: Not applicable

These data have been revised following changes to the TIM methodology. Therefore they may not agree with estimates that have been published previously.

1 Based mainly on data from the International Passenger Survey. Includes adjustments for (1) those whose intended length of stay changes so that their migrant status changes; (2) asylum seekers and their dependants not identified by the IPS; and (3) flows between the UK and the Republic of Ireland.

2 European Union estimates are shown for the EU15 (Austria, Belgium, Denmark, Finland, France, Germany, Greece, the Irish Republic, Italy, Luxembourg, Netherlands, Portugal, Spain and Sweden), the A8 (the Czech Republic, Estonia, Hungary, Latvia, Lithuania, Poland, Slovakia and Slovenia) and EU 25 (EU15 and A8 grouping plus Malta and Cyprus). British citizens are excluded from all groupings and shown separately. These estimates do not include the 2 new member states admitted to the EU in January 2007. These will be included in the 2007 international migration estimates.

3 For 2004 onwards, the New Commonwealth excludes Malta and Cyprus.

4 For 2004 onwards, Other foreign excludes the eight Central and Eastern European member states that joined the EU in May 2004.

For more information please contact John Hollis or Caroline Hall, Data Management and Analysis Group, Greater London Authority, City Hall, The Queen's Walk, London SE1 2AA
Tel: 020 7983 4604 e-mail: john.hollis@london.gov.uk or 020 7983 4347 e-mail: caroline.hall@london.gov.uk

Data produced in this briefing have been reproduced with the permission of the Controller of Her Majesty's Stationery Office and are © Crown Copyright. All data in this document are produced by the Office for National Statistics.