

Data Management and Analysis Group

Census Information Note CIN 2005-2



DMAG Briefing 2005/43

December 2005

Census Information Note CIN 2005-2

For more information please contact:

Gareth Piggott
Data Management and Analysis Group
Greater London Authority
City Hall
The Queen's Walk
London SE1 2AA

Tel: 020 7983 4327
e-mail: gareth.piggott@london.gov.uk

Copyright © Greater London Authority

Any Census data produced in this briefing has been reproduced with the permission of the Controller of Her Majesty's Stationery Office and the Queen's Printer for Scotland and is © Crown Copyright. An acknowledgement of the source is given at the end of each table.

ISSN 1479-7879

Census commissioned tables update

Summary

- There are around 900 commissioned tables so far. All of these have been supplied to users at CUG December 2005.
- The Census Team is converting some of these tables into SASPAC files
- The Census Team have improved the searchable spreadsheet for commissioned tables.
- The key difference between the previous spreadsheet and this one is that we have introduced a list of keywords
- The topic boxes search keywords, the table population and geography in the spreadsheet of commissioned tables
- New columns include SCT table number, number of cells, list of keywords and whether a table has a London geography within it.
- The number of cells gives users some idea of the size and complexity of a table before it is opened. The maximum number of cells in one table is 236,376.

Introduction

This Census Information Note has been produced to update users on the position with commissioned tables from the 2001 Census. It refers to tables that have been received so far from Office for National Statistics (ONS). There are a lot more tables to come and we are continuing to commission tables. The current wait for any tables commissioned now is around three months¹. Users wishing to commission tables can do so via the Census Team at the GLA.

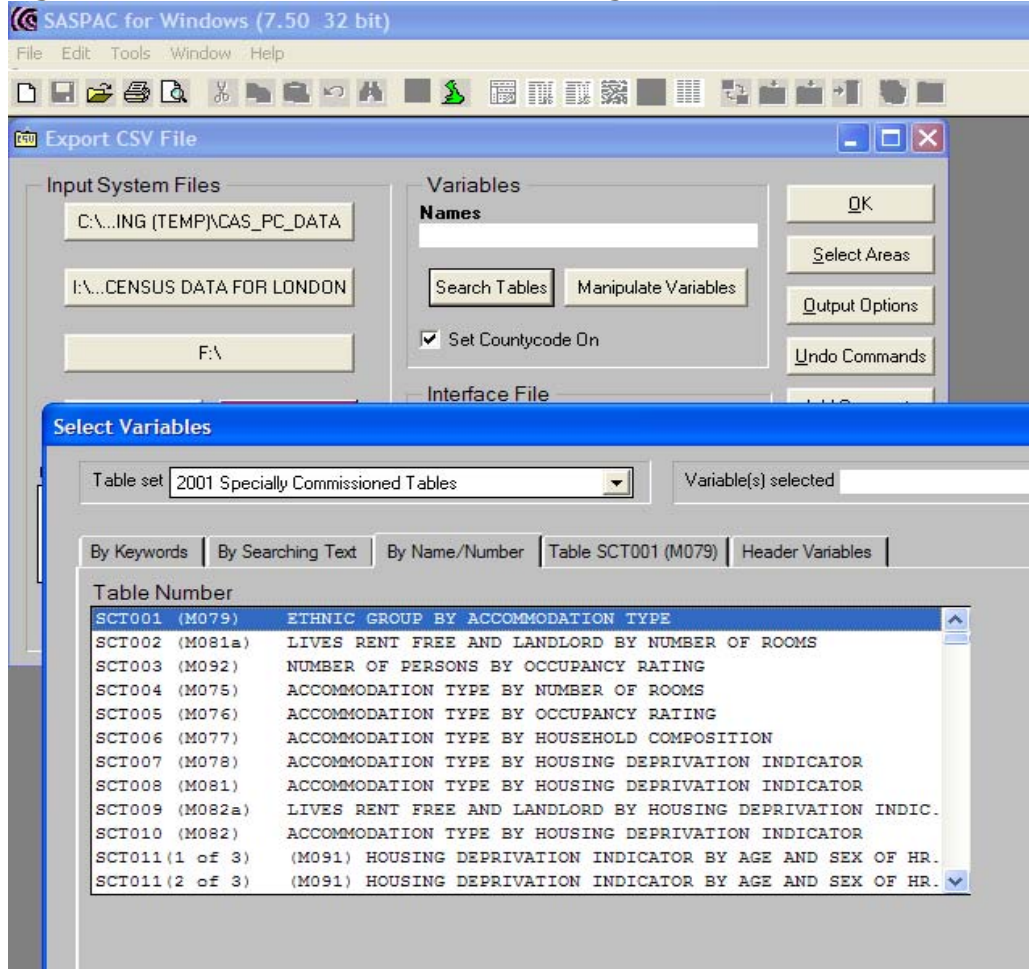
We have received around 900 commissioned tables so far from ONS. All tables received to date were supplied to users at the December 2005 Census Users Group (CUG) meeting. The vast majority of tables are available in Excel format and some are available in SASPAC format.

SASPAC files

The Census Team are busily converting many of the most useful tables into SASPAC files. This is a time consuming process so we are selective over which tables to process at first. The SASPAC commissioned tables have a prefix of 'SCT'. SCT table files have been distributed at previous Census Users Groups, but we will continue to make them available to users as they are created, normally on a CD at the CUG. These tables can be searched for just like any other table in SASPAC. See Figure 1

¹ At the last CUG we reported the wait was 15 months but the ONS had made an error on the estimated date by one year.

Figure 1 Screen shot from SASPAC showing list of commissioned tables



The tables most likely to be made into SASPAC files are ones with smaller geographies such as wards. So for instance tables that only show data at national level such as England and Wales, can easily be viewed in Excel and there is not usually a need for SASPAC to be used for these tables.

Searchable spreadsheet

The Census Team have improved the searchable spreadsheet for commissioned tables. Users can search for any of the 900 commissioned tables by typing text into any of the five topic boxes in the spreadsheet. The spreadsheet is on the CUG CD, but can also be obtained from the Census Team and forwarded by email (2.2MB), or alternatively is available on the Commissioned Tables page of the Census Extranet.

The columns contained within this spreadsheet are:

- ONS table number
- SCT table number
- Table title
- Table population
- Geography
- Number of Cells
- Does table contain geography in London
- All Keywords

Furthermore, there is a separate workbook called 'List of tables', which provides the source for the 'Find Table' workbook. This contains some additional columns related to the SASPAC commissioned tables, which are:

- Number of SASPAC pages
- Framework file created
- System file created
- Framework file checked
- System file checked
- Comments

These columns are there predominantly there to assist the Census Team, but users may sometimes find it useful to refer to this information.

Table titles

Until now, the only method of searching the spreadsheet of commissioned tables was using the ONS table title. Now, the topic boxes search keywords, table population and geography.

Keywords

The key difference between the previous spreadsheet and this one is that we have introduced a list of keywords.

Many of the table titles are not useful to search on. For example, if the title was 'Theme table on religion', you could only find the table if you typed 'Theme' or 'Religion' in the topic box. However, the table may contain data on many other variables such as economic activity, family type, occupation, age etc. So these have now been taken as keywords and added to the spreadsheet.

This means that when the word that is searched for is typed into one of the topic boxes, this word is searched for in a list of keywords. The number of keywords entered into each table was unlimited.

The keywords for each table are displayed in column H in the 'Find Table' workbook. This shows at a glance what topics are contained within a table before it is opened.

Common keywords

A list of commonly used keywords can be found on a separate Tab (workbook) in the same spreadsheet. This is useful for users to see how some words might appear in the spreadsheet. For example, the word 'ethnicity' does not appear anywhere in the keywords. Instead, users must use the term 'ethnic group'.

A good tip for users though is to only type in part of the word that you are interested in. For example, type 'Ethn' and this will still return all the tables related to ethnicity. Should there be any missing character or additional character then your table will not be found. So for instance with 'Limiting long-term illness', there is a dash between long and term. In cases like this it is better to type part of the phrase such as 'illness' since this is a unique word that does not appear in other keywords.

Figure 2 Screenshot from searchable commissioned tables spreadsheet directory

The screenshot shows a Microsoft Excel spreadsheet titled "2001 Census Commissioned Tables". The spreadsheet is organized into columns: A (ONS number), B (SCT number), C (Table title), D (Table population), E (Geography), F (Number of cells), G (Does table contain geography in London), and H (All Keywords). The rows list various census tables, such as "Age and Country of birth by Ethnic group" (ONS 0004) and "Age and Highest level of qualification by Ethnic group (White) and Economic activity" (ONS 0027). A search box at the top of the spreadsheet allows users to filter tables by topic (e.g., "Topic 1", "Topic 2") and keywords. The spreadsheet also includes a "Find table" function and a "Full Directory" link.

Searchable geography

Sometimes the geography of a table is the most important factor in searching. For example, if a user was looking for data for parliamentary constituencies in their borough, there is little point in searching through all the tables with the right topics if only one of them has the correct geography. Therefore the word typed into the topic box now also searches the geography column. Therefore a user could enter something like, 'ward' in the first and 'ethnic group' in the second topic box.

A list of common geographies is also included in the same workbook as the list of common keywords.

London geography

A column has also been added to show whether a table contains a London geography or not. We find this useful as it is a quick way of telling whether a table may be relevant to London or not.

Furthermore, it is possible to create another spreadsheet by sorting this column and deleting all the rows without a London geography. This would leave only the most relevant tables in terms of geography.

Table population

There is also the capability to search the table populations within this spreadsheet. Any words typed into one of the five topic boxes will automatically search the table populations as well. This means that users could enter something like 'ward', 'HRP' and 'accommodation type' and the table would return results using each of the three columns that the table searches.

Number of cells

The searchable spreadsheet also has some extra columns, which some users may find useful. For example, we have added in the number of cells that each table has in it. This gives users some idea of the size and complexity of a table before it is opened.

The number of cells in a table ranges from one to 236,376! Also, 67 tables have over 10,000 cells. In the majority of large tables the geographical level is usually high i.e. UK, GB or E&W.

Number of SASPAC pages

The spreadsheet also provides a means of logging the information on each of the tables that have been converted into SASPAC files. All tables with an SCT number will also show the number of pages that table comprises in SASPAC. There is also data on whether the framework files and system files have been created and checked. Finally, there is a column for any relevant comments. This is principally so we can record any unusual characteristics or useful information about the table.

Ward level SCT tables in SASPAC

There have been 21 tables that have data at ward level since the last Census Information Note about commissioned tables in September 2004. Those tables are as follows:

SASPAC table: [SCT045](#)

ONS table: [C0179](#)

Title: Household composition by Tenure and Occupancy rating

Table population: All households

Geographical level: England and Wales (E&W), Government Office Regions (GOR), Local Authorities and Wards of London, Former county Berkshire, Local Authorities and Wards of Reading and Slough

Number of cells: 374

SASPAC table: [SCT046](#)

ONS table: [C0186](#)

Title: Based on table S021 Economic Activity and Hours Worked by Sex and Limiting Long-Term illness

Table population: Residents aged 16 to pension Age

Geographical level: Wards in London and Districts (Local Authority - LA) outside

Number of cells: 261

SASPAC table: [SCT047](#)

ONS table: [C0192](#)

Title: Based on Table S026 Sex and Economic Activity by General Health and Provision of Unpaid Care

Table population: Residents aged 16 to RA in households

Geographical level: Wards in London and Districts (Local Authority - LA) outside

Number of cells: 840

SASPAC table: [SCT048](#)

ONS table: [C0193](#)

Title: Based On Table S031 Family Composition And Number Of Dependent Children By Sex And Economic Activity

Table population: Parents aged 16 to RA with dependent children

Geographical level: Wards in London and Districts (Local Authority - LA) outside

Number of cells: 162

SASPAC table: [SCT049](#)

ONS table: [C0194](#)

Title: Based on table S043 Sex And NS-SeC by Economic Activity

Table population: Residents aged 16 to RA

Geographical level: Wards in London and Districts (Local Authority - LA) outside

Number of cells: 480

SASPAC table: [SCT050](#)

ONS table: [C0218](#)

Title: Based on table S047 NS-SeC by Tenure

Table population: Residents in households aged 16 to RA

Geographical level: Wards in London and Districts (Local Authority - LA) outside

Number of cells: 561

SASPAC table: [SCT051](#)

ONS table: [C0219](#)

Title: Based on table S061 Tenure and Car or Van Availability by Economic Activity

Table population: Residents in households aged 16 to RA

Geographical level: Wards in London and Districts (Local Authority - LA) outside

Number of cells: 300

SASPAC table: [SCT052](#)

ONS table: [C0221](#)

Title: Based on table S112 Sex and NS-SeC by Ethnic Group

Table population: Residents aged 16 to RA

Geographical level: Wards in London and Districts (Local Authority - LA) outside

Number of cells: 816

SASPAC table: [SCT053](#)

ONS table: [C0277](#)

Title: Based on Table S114 Sex and NS-SEC by Highest Level of Qualification

Table population: Residents aged 16 to RA

Geographical level: Wards in London and Districts (Local Authority - LA) outside

Number of cells: 288

SASPAC table: [SCT054](#)

ONS table: [C0278](#)

Title: Based on S122 Sex and NS-SeC by Method of Travel to Work

Table population: Employed residents 16 to RA

Geographical level: Wards in London and Districts (Local Authority - LA) outside

Number of cells: 564

SASPAC table: [SCT055](#)

ONS table: [C0280](#)

Title: Based on S157 Sex and NS-SeC by Religion

Table population: Residents aged 16 to RA

Geographical level: Wards in London and Districts (Local Authority - LA) outside

Number of cells: 480

SASPAC table: [SCT063](#)

ONS table: [C0440](#)

Title: Industry (2 Digit SIC)

Table population: Employed residents 16-74

Geographical level: Wards in E&W

Number of cells: 62

SASPAC table: [SCT064](#)

ONS table: [C0441](#)

Title: Occupation (3 digit SOC)

Table population: Employed residents 16-74

Geographical level: Wards in E&W

Number of cells: 82

SASPAC table: [SCT067](#)

ONS table: [C0444](#)

Title: Full-time students (aged 16+) at their term-time address

Table population: Employed residents 16-74

Geographical level: Wards in E&W

Number of cells: 1008

SASPAC table: [SCT069](#)

ONS table: [C0446](#)

Title: Age by sex and highest level of qualification

Table population: Residents 16-74

Geographical level: Wards in E&W

Number of cells: 273

SASPAC table: [SCT073](#)

ONS table: [C0450](#)

Title: Area of workplace by sex and hours worked (Part-time/full-time) and employment status (WORKPLACE POPULATION)*

Table population: Aged 16-74 Working in the area

Geographical level: Wards in E&W

Number of cells: 27

SASPAC table: [SCT075](#)

ONS table: [C0002](#)

Title: Non-household reference persons (Pensionable age) in couple households

Table population: All people of pensionable Age (60 and over for females;65 and over for males

Geographical level: Wards, Local Authority & Higher Administrative Areas (GOR)

Number of cells: 9

SASPAC table: [SCT076](#)

ONS table: [C0003](#)

Title: Household residents by Family type (Summary classification)

Table population: All people in households

Geographical level: Wards, Local Authority & Higher Administrative Areas (GOR)

Number of cells: 5

SASPAC table: [SCT099](#)

ONS table: [C0421](#)

Title: (Based on Table UV50) Approximated Social grade

Table population: All people aged 16 to 64 in households

Geographical level: Wards, Local Authority & Higher Administrative Areas (GOR)

Number of cells: 6

SASPAC table: [SCT102](#)

ONS table: [C0423](#)

Title: (based on Table S067) Age of Household reference person (HRP) and Dependent children by approximated Social grade

Table population: All household reference persons aged 50 to 64

Geographical level: Wards, Local Authority & Higher Administrative Areas (GOR)

Number of cells: 30

SASPAC table: [SCT104](#)

ONS table: [C0552](#)

Title: Age by Sex, Living in private Households and Communal Establishments.

Table population: All full-time students aged 18-29

Geographical level: Wards in England

Number of cells: 108

Regular Briefings from the GLA Data Management and Analysis Group

Recent *DMAG Briefings*:

DMAG 2005/1	County of Birth and Labour Market Outcomes	Lorna Spence
DMAG 2005/2	2001 Census: London Country of Birth Profiles	Giorgio Finella
DMAG 2005/3	2001 Census: Economic Activity in London	Giorgio Finella
DMAG 2005/4	2001 Census Profiles: Pakistanis in London	Gareth Piggott
DMAG 2005/5	Indices of Deprivation 2004: Ward analysis	Lovedeep Vaid
DMAG 2005/6	London – The World in a City	Marian Mackintosh
DMAG 2005/7	Claimant Count Model: Technical Note	Lorna Spence/ Georgia Hay
DMAG 2005/8	The National and London Pupil Datasets	David Ewens
DMAG 2005/9	Borough Fertility Rates 2000-02	John Hollis/ Georgia Hay
DMAG 2005/10	Borough Life Tables 2000-02	John Hollis/ Georgia Hay
DMAG 2005/11	Demography Team Workplan 2005-06	John Hollis
DMAG 2005/12	Ethnic Diversity Indices	Baljit Bains
DMAG 2005/13	London Borough and Sub-Regional Demographic Profiles (2003)	Georgia Hay
DMAG 2005/14	Guide to accessing the LHS at the ESRC Data Archive	Lovedeep Vaid
DMAG 2005/15	GLA Ward Population Projection Manual	Georgia Hay
DMAG 2005/16	Income Poverty in London: 2003/04	Lovedeep Vaid
DMAG 2005/17	Focus on London's Demography	John Hollis
DMAG 2005/18	Census Information Note 2005-1	Eileen Howes
DMAG 2005/19	2001 Census: London Country of Birth Profiles – The Arab League	Giorgio Finella
DMAG 2005/20	Benefits Data for London: No 1 Income Support	Lovedeep Vaid
DMAG 2005/21	Transgenerational Ethnicity	Baljit Bains/John Hollis/Vicky Clarke
DMAG 2005/22	Workless Households in London	Lorna Spence
DMAG 2005/23	2001 Census Economic Activity Rates	Georgia Hay
DMAG 2005/24	Ward Risks of Population Change	John Hollis
DMAG 2005/25	Child Yield	John Hollis
DMAG 2005/26	Religious Diversity Indices	Baljit Bains
DMAG 2005/27	ONS Mid-2004 Population Estimates	Georgia Hay
DMAG 2005/28	Benefits Data for London: No 2 Incapacity Benefits and Severe Disability Allowance	Lovedeep Vaid
DMAG 2005/29	Paycheck 2005: An analysis of Household Income Data for London	Lovedeep Vaid
DMAG 2005/30	2001 Census: The migration patterns of London's ethnic groups	Marian Mackintosh
DMAG 2005/32	Moving home and Changing School	David Ewens
DMAG 2005/33	GLA 2005 Round Interim Demographic Projections	John Hollis/ Georgia Hay
DMAG 2005/34	Introducing the Annual Population Survey	Lorna Spence
DMAG 2005/35	Trends in Household Worklessness in London	Lorna Spence
DMAG 2005/36	Improving the Evidence Base for School Places Planning	David Ewens
DMAG 2005/37	Benefits Data for London: No 3 Children in Benefit Claiming Families	Lovedeep Vaid
DMAG 2005/38	Patterns of Ethnic Segregation in London	Baljit Bains
DMAG 2005/39	London's changing population	Eileen Howes (editor)
DMAG 2005/40	GLA 2005 Round Interim Ward Population Projections	Georgia Hay

A full list of the 2004 DMAG Briefings is available to internal customers through the GLA Intranet; otherwise please contact Jackie Maguire who can also provide a CD containing PDF versions of the Briefings or hard copies, jackie.maguire@london.gov.uk.

Contact details for the Data Management and Analysis Group are as follows:

Rob Lewis (020 7983 4652) is **Head of the Data Management and Analysis Group**. rob.lewis@london.gov.uk

Bill Armstrong (020 7983 4653) works in the **Census Team** with particular responsibilities for **commissioned tables, workplace data** and **mapping**. bill.armstrong@london.gov.uk

Baljit Bains (020 7983 4613) works in the **Demography Team** and is responsible for **ethnic demography**, including **ethnic group projections**. baljit.bains@london.gov.uk

Gareth Baker (020 7983 4965) works on **GIS** issues. gareth.baker@london.gov.uk

Shen Cheng (020 7983 4889) works on **Education data** and is responsible for **school roll projections**. shen.cheng@london.gov.uk (maternity leave until early 2006)

David Ewens (020 7983 4656) is responsible for **Education research and data analysis**. david.ewens@london.gov.uk

Giorgio Finella (020 7983 4328) works in the **Census Team**. giorgio.finella@london.gov.uk

Dennis Grenham (020 7983 4532) works mostly on **statistical compendia, election statistics** and **special publications**. dennis.grenham@london.gov.uk

Georgia Hay (020 7983 4347) works in the **Demography Team** and is responsible for **ward level projections**, the **Demography Extranet** and **borough liaison**. georgia.hay@london.gov.uk

John Hollis (020 7983 4604) is responsible for the work of the **Demography Team** and the **Social Exclusion Team**, and particularly for **demographic modelling**. john.hollis@london.gov.uk

Eileen Howes (020 7983 4657) is responsible for the work of the **Census Team** and the **SASPAC** project. eileen.howes@london.gov.uk

Ed Klodawski (020 7983 4694) works in the **Demography Team**. His post is joint with the **London Health Observatory** and specialises in **ethnic** and **health** issues. edmund.klodawski@london.gov.uk

Rachel Leeser (020 7983 4696) works in the **Social Exclusion Team** with particular responsibilities for **surveys** and **income data**. rachel.leeser@london.gov.uk

Alan Lewis (020 7983 4348) works on the **SASPAC** project. alan.lewis@london.gov.uk

Jackie Maguire (020 7983 4655) is responsible to the Group Head and co-ordinates the **administrative and financial** work of the Group. jackie.maguire@london.gov.uk

Michael Minors (020 7983 4654) is responsible for the work of the **General Statistics, Education, and GIS team**. michael.minors@london.gov.uk

Karen Osborne (020 7983 4889) works on **Education data** and is responsible for **school roll projections**. karen.osborne@london.gov.uk (maternity cover until early 2006)

Gareth Piggott (020 7983 4327) works in the **Census Team**. gareth.piggott@london.gov.uk

Lorna Spence (020 7983 4658) is a member of the **Social Exclusion Team**, with particular responsibilities for the **labour market data**. lorna.spence@london.gov.uk

Lovedeep Vaid (020 7983 4699) works in the **Social Exclusion Team** with particular responsibilities for **benefits, indicators** and **income data**. lovedeep.vaid@london.gov.uk

Please use the above descriptions in deciding whom to contact to assist you with your information needs.