

Data Management and Analysis Group

London Country of Birth Profiles The Arab League

An analysis of Census Data



DMAG Briefing 2005/19

June 2005

London Country of Birth Profiles - The Arab League An analysis of Census data

For more information please contact:

Giorgio Finella
Data Management and Analysis Group
Greater London Authority
City Hall (5 East)
The Queen's Walk
London SE1 2AA

Tel: 020 7983 4328
giorgio.finella@london.gov.uk

Copyright © Greater London Authority, 2005

Any Census data produced in this briefing has been reproduced with the permission of the Controller of Her Majesty's Stationery Office and the Queen's Printer for Scotland and is © Crown Copyright. An acknowledgement of the source is given at the end of each table.

I would like to thank Bill Armstrong, Gareth Baker, Eileen Howes and Lorna Spence, for all their help and advice in the production of this briefing.

ISSN 1479-7879

Contents

	Page
Introduction	1
Country Profiles	
The Arab World	4
Algeria	6
Bahrain	8
Egypt	10
Iraq	12
Jordan	14
Kuwait	16
Lebanon	18
Libya	20
Morocco	22
Occupied Territories (Gaza and West Bank)	24
Oman	26
Qatar	28
Saudi Arabia	30
Somalia	32
Sudan	34
Syrian Arab Republic	36
Tunisia	38
United Arab Emirates	40
Yemen	42
Appendix 1: Glossary	45
Appendix 2: List of countries, Commissioned Tables C0116, C0116a, C0116b	49
Appendix 3: List of all countries for which data is currently available	50
Appendix 4: Layout of Commissioned Table SCT021 (C0116)	59

London Country of Birth Profile

The aim of this briefing is to present a picture of people living in London and where they were born in the Arab world. This report will show the diverse make-up of London, with its cosmopolitan residents living together in a vibrant and multi-cultural world city.

This briefing is based on the 2001 Census statistics on country of birth. This report lists the Arab world as defined by the Arab League¹ and 19 countries for which ONS have data. There remain almost 50,000 London residents born outside the UK for which we currently have no detailed information on country of birth. These represent less than 3 per cent of Londoners born outside the UK or Republic of Ireland.

This briefing presents a two page layout for each country of birth showing a range of characteristics such as age, sex, living arrangements, accommodation type, housing tenure, overcrowding, qualifications, health, economic activity, industry and occupation.

The different sections aim to answer a series of questions which are listed below;

Demography

- What are the breakdowns between male and female
- What are the age ranges for men and women
- What are Londoners' living arrangements

Housing and amenities

- What type of accommodation do people live in
- What type of housing tenure do they live in
- Do they live in overcrowded accommodation
- Does their home have central heating
- Do household members have access to a car

Health

- What is the state of peoples general health
- Do Londoners have limiting long term illnesses

Qualifications

- What kinds of qualification do they hold

Economic activity of those aged 16 to 74

- How many people work
- What type of work do they do
- How many don't work
- What are the reasons for not working
- How many students are aged 16-74
- What is the employment rate

Employment of those aged 16 to 74

- What types of occupations do people work in
- In which industries do they work

¹ A list of Arab League members is provided at the end of this section.

The intention is to give a summary of people born in the countries comprising the Arab world who live in London, not a comprehensive exploration of differences between all the peoples in this group. Comparisons are made between the people born in each country and the London average: this provides a barometer of how one country of birth compares to London residents overall. To aid readers understanding of the information, a selection of charts provide a visual interpretation of the data.

Country of birth question

The country of birth question in the 2001 Census was based on six tick boxes and a section for a self defined response. Five of the tick boxes related to England, Wales, Scotland, Northern Ireland and the Republic of Ireland. The sixth box was ticked for "Elsewhere" and the respondents were given the opportunity to write in a response. Almost 1.8 million (25 per cent) Londoners were born outside the UK and Republic of Ireland and their responses have been coded.

For a glossary of terms used in this briefing see Appendix 1.

For a list of which countries were commissioned as C0116, C0116a and C0116b see Appendix 2.

For a list of all areas / countries for which data is currently available and which tables to look at see Appendix 3.

The table used in this report is SCT021. A layout of the complete commissioned table is in Appendix 4.

Below is the list of the Arab League

Algeria.
Bahrain
Comoros*
Djibouti*
Egypt
Iraq
Jordan
Kuwait
Lebanon
Libya
Mauritania*
Morocco
Occupied Territories (Gaza and West Bank)
Oman
Qatar
Saudi Arabia
Somalia
Sudan
Syria
Tunisia
United Arab Emirates
Yemen

* Data not available

Profile of those Living in London born in: The Arab League

Demography

By sex	Number	%	Total %
Total	106,833		
Male	55,884	52.3	48.4
Female	50,949	47.7	51.6

By sex and age	0-4	5-15	16-24	25-44	45-59	60-64	65-74	75+	All Ages
Total	3,500	16,052	15,176	45,674	16,943	2,992	4,222	2,274	106,833
Male	1,908	8,397	7,757	23,633	9,534	1,599	2,108	948	55,884
Female	1,592	7,655	7,419	22,041	7,409	1,393	2,114	1,326	50,949
Percentage by age group	3.3	15.0	14.2	42.8	15.9	2.8	4.0	2.1	100.0
London total	6.7	13.5	12.1	35.3	16.1	3.9	6.5	5.9	100.0

Living arrangements	Number	%	Total %
Living in a couple	41,231	39.3	39.9
Not living in a couple	63,573	60.7	60.1
Lone parent	24,494	23.4	15.0
Living alone	11,821	11.3	14.8

Housing and amenities

Accommodation type

House or bungalow	46,184	43.2	59.6
Flat, maisonette or apartment	56,200	52.6	38.4
Caravan or other temporary structure	376	0.4	0.1
Households in shared accommodation	2,059	1.9	0.6
Living in communal establishments	2,035	1.9	1.3

Tenure

Owner occupier*	30,970	29.5	58.4
Council rented	24,701	23.6	16.7
Other social rented	18,428	17.6	8.8
Private rented	22,770	21.7	14.4
Living rent free	7,940	7.6	1.7

Occupancy rating

0 or more	54,139	51.7	78.7
-1 or less	50,671	48.3	21.3

Central heating

Accommodation with	98,819	94.3	94.1
Accommodation without	5,988	5.7	5.9

People in households with

Access to at least one car	56,417	53.8	70.9
Without access to car	48,381	46.2	29.1

Health

General health

Good health	73,804	69.1	70.8
Fairly good health	21,550	20.2	20.9
Not good health	11,472	10.7	8.3

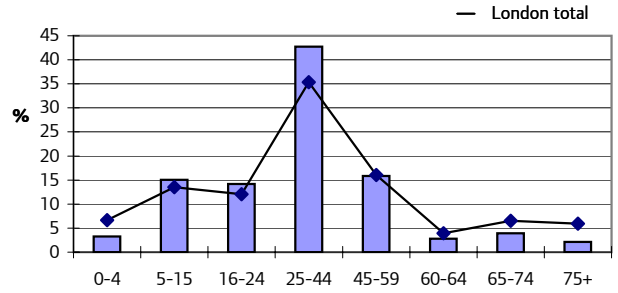
Limiting long term illness (LLTI)

Has a LLTI	18,402	17.2	15.5
Does not have a LLTI	88,429	82.8	84.5

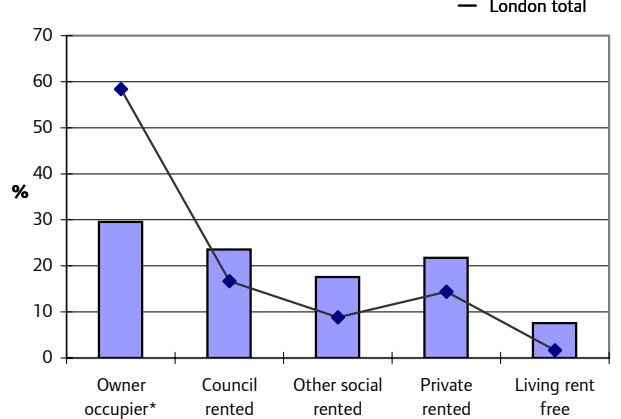
Qualifications (aged 16-74)

No qualifications or level unknown	28,530	33.6	29.2
Lower level qualifications	28,409	33.4	39.8
Higher level qualifications	28,073	33.0	31.0

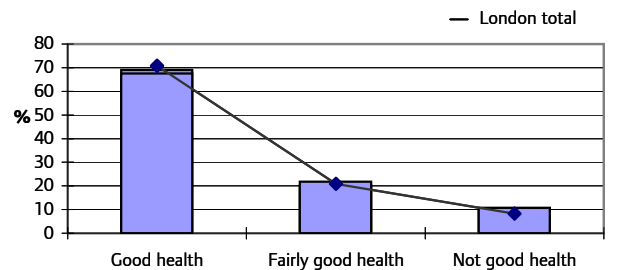
Age structure



Tenure



General health

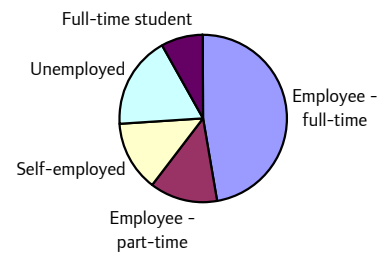


Source: 2001 Census, Commissioned Table SCT021 (C0116)

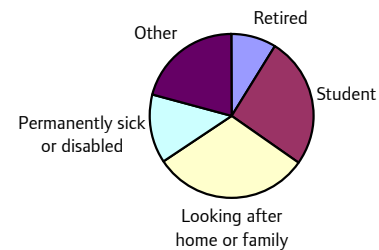
© Crown Copyright.

	Number	%	Total %
All persons 16-74	85,007		
Economically active	40,414	47.5	67.6
As a % of economically active			
Employee - full-time	19,077	47.2	63.1
Employee - part-time	5,332	13.2	12.8
Self-employed	5,499	13.6	13.3
Unemployed	7,272	18.0	6.5
Full-time student	3,234	8.0	4.4
Economically inactive	44,593	52.5	32.4
As a % of economically inactive			
Retired	3,908	8.8	30.2
Student	11,550	25.9	20.2
Looking after home or family	13,790	30.9	22.1
Permanently sick or disabled	6,027	13.5	14.1
Other	9,318	20.9	13.4
Students 16-74	14,784	17.4	9.5
Employment Rate 16-74		42.6	66.6

Economic activity by type



Economic inactivity by type



Employment 16-74

Occupation

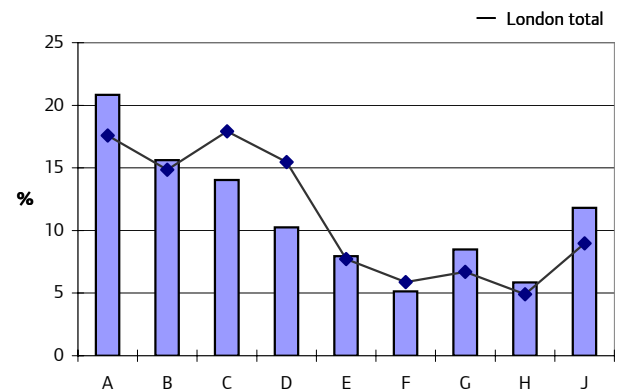
Occupation	Number	%	Total %
Total	31,620	100.0	100.0
Managers & senior officials A	6,591	20.8	17.6
Professional occupations B	4,942	15.6	14.9
Associate professionals** C	4,435	14.0	17.9
Administrative *** D	3,241	10.2	15.5
Skilled trades occupations E	2,514	8.0	7.7
Personal service occupations F	1,627	5.1	5.9
Sales & customer service occupations G	2,684	8.5	6.7
Process; plant & machine operative H	1,852	5.9	4.9
Elementary occupations J	3,734	11.8	9.0

Industry

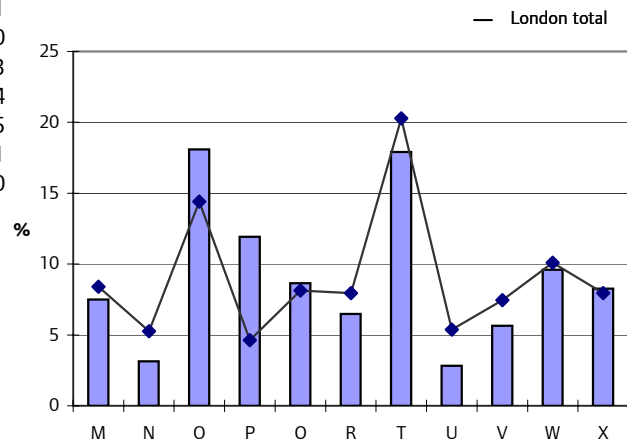
Industry	Number	%	Total %
Total	31,653	100.0	100.0
Manufacturing & primary# M	2,371	7.5	8.4
Construction N	995	3.1	5.3
Wholesale & retail trade O	5,723	18.1	14.4
Hotels & restaurants P	3,771	11.9	4.6
Transport; storage & communications Q	2,739	8.7	8.1
Financial intermediation R	2,051	6.5	8.0
Real estate; renting## T	5,668	17.9	20.3
Public administration### U	897	2.8	5.4
Education V	1,784	5.6	7.5
Health & social work W	3,039	9.6	10.1
Other X	2,615	8.3	8.0

* Owner occupier includes with a mortgage and part rent - part buy
 ** Associate professionals & technical occupations
 *** Administrative & secretarial occupations
 # includes agriculture, fishing, mining and utilities
 ## Real estate; renting & business activities
 ### Public administration & defence; social security

Occupational breakdown



Industry breakdown



Profile of those Living in London born in: Algeria

Demography

By sex	Number	%	Total %							
Total	6,408									
Male	4,552	71.0	48.4							
Female	1,856	29.0	51.6							
By sex and age	0-4	5-15	16-24	25-44	45-59	60-64	65-74	75+	All Ages	
Total	118	433	427	4,692	612	38	59	29	6,408	
Male	54	228	253	3,556	402	15	33	11	4,552	
Female	64	205	174	1,136	210	23	26	18	1,856	
Percentage by age group	1.8	6.8	6.7	73.2	9.6	0.6	0.9	0.5	100.0	
London total	6.7	13.5	12.1	35.3	16.1	3.9	6.5	5.9	100.0	

Living arrangements	Number	%	Total %
Living in a couple	3,682	59.2	39.9
Not living in a couple	2,534	40.8	60.1
Lone parent	355	5.7	15.0
Living alone	870	14.0	14.8

Housing and amenities

Accommodation type

House or bungalow	1,844	28.8	59.6
Flat, maisonette or apartment	4,215	65.7	38.4
Caravan or other temporary structure	21	0.3	0.1
Households in shared accommodation	144	2.2	0.6
Living in communal establishments	189	2.9	1.3

Tenure

Owner occupier*	1,560	25.1	58.4
Council rented	1,544	24.8	16.7
Other social rented	880	14.2	8.8
Private rented	1,993	32.1	14.4
Living rent free	240	3.9	1.7

Occupancy rating

0 or more	3,275	52.6	78.7
-1 or less	2,946	47.4	21.3

Central heating

Accommodation with	5,667	91.1	94.1
Accommodation without	553	8.9	5.9

People in households with

Access to at least one car	3,266	52.5	70.9
Without access to car	2,953	47.5	29.1

Health

General health

Good health	4,329	67.6	70.8
Fairly good health	1,394	21.8	20.9
Not good health	685	10.7	8.3

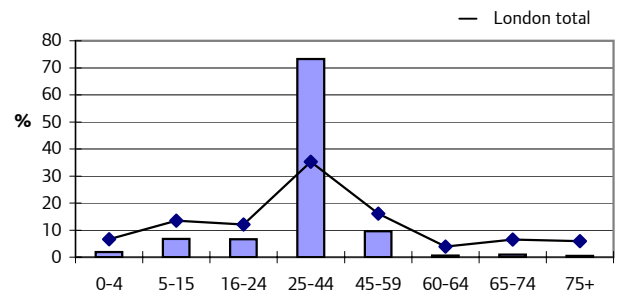
Limiting long term illness (LLTI)

Has a LLTI	889	13.9	15.5
Does not have a LLTI	5,519	86.1	84.5

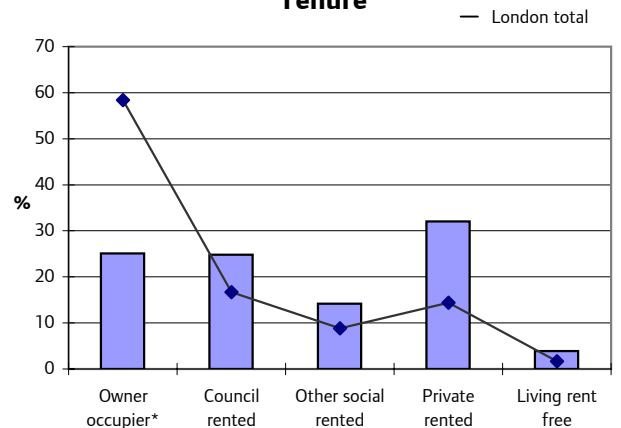
Qualifications (aged 16-74)

No qualifications or level unknown	1,899	32.6	29.2
Lower level qualifications	2,067	35.5	39.8
Higher level qualifications	1,862	31.9	31.0

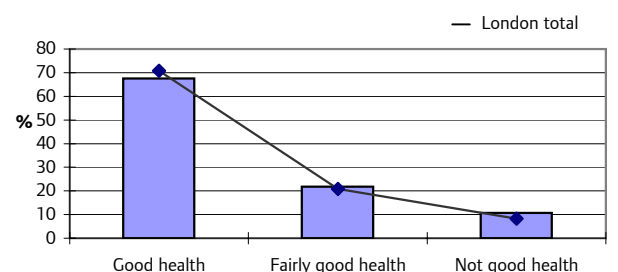
Age structure



Tenure



General health

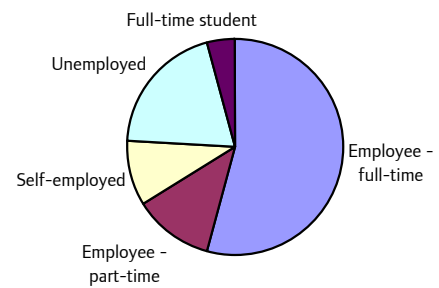


Source: 2001 Census, Commissioned Table SCT021 (C0116)

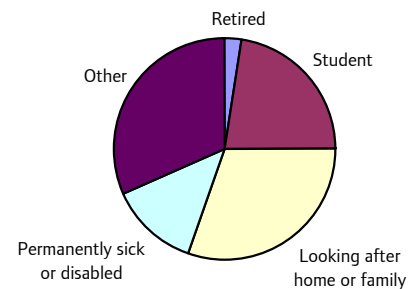
© Crown Copyright.

	Number	%	Total %
All persons 16-74	5,831		
Economically active	3,746	64.2	67.6
As a % of economically active			
Employee - full-time	2,031	54.2	63.1
Employee - part-time	447	11.9	12.8
Self-employed	363	9.7	13.3
Unemployed	744	19.9	6.5
Full-time student	161	4.3	4.4
Economically inactive	2,085	35.8	32.4
As a % of economically inactive			
Retired	54	2.6	30.2
Student	468	22.4	20.2
Looking after home or family	629	30.2	22.1
Permanently sick or disabled	273	13.1	14.1
Other	661	31.7	13.4
Students 16-74	629	10.8	9.5
Employment Rate 16-74		54.6	66.6

Economic activity by type



Economic inactivity by type

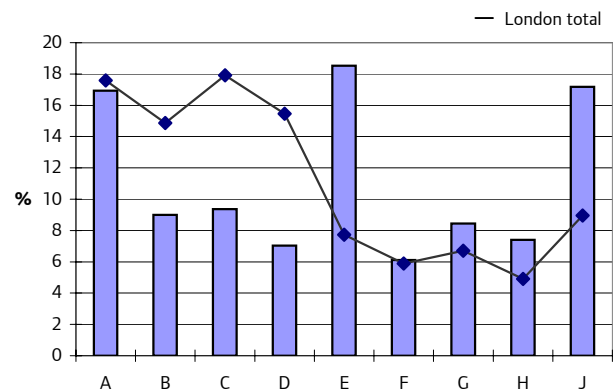


Employment 16-74

Occupation

Occupation	Number	%	Total %
Total	2,946	100.0	100.0
Managers & senior officials A	499	16.9	17.6
Professional occupations B	265	9.0	14.9
Associate professionals** C	276	9.4	17.9
Administrative *** D	207	7.0	15.5
Skilled trades occupations E	546	18.5	7.7
Personal service occupations F	180	6.1	5.9
Sales & customer service occupations G	249	8.5	6.7
Process; plant & machine operative H	218	7.4	4.9
Elementary occupations J	506	17.2	9.0

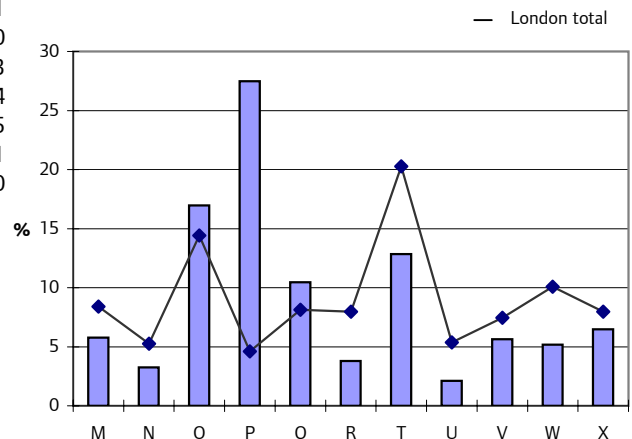
Occupational breakdown



Industry

Industry	Number	%	Total %
Total	2,943	100.0	100.0
Manufacturing & primary# M	170	5.8	8.4
Construction N	96	3.3	5.3
Wholesale & retail trade O	499	17.0	14.4
Hotels & restaurants P	809	27.5	4.6
Transport; storage & communications Q	308	10.5	8.1
Financial intermediation R	112	3.8	8.0
Real estate; renting## T	378	12.8	20.3
Public administration### U	62	2.1	5.4
Education V	166	5.6	7.5
Health & social work W	152	5.2	10.1
Other X	191	6.5	8.0

Industry breakdown



* Owner occupier includes with a mortgage and part rent - part buy
 ** Associate professionals & technical occupations
 *** Administrative & secretarial occupations
 # includes agriculture, fishing, mining and utilities
 ## Real estate; renting & business activities
 ### Public administration & defence; social security

Profile of those Living in London born in: Bahrain

Demography

By sex	Number	%	Total %							
Total	982									
Male	493	50.2	48.4							
Female	489	49.8	51.6							
By sex and age	0-4	5-15	16-24	25-44	45-59	60-64	65-74	75+	All Ages	
Total	18	131	233	451	113	12	14	10	982	
Male	13	73	113	216	60	6	6	6	493	
Female	5	58	120	235	53	6	8	4	489	
Percentage by age group	1.8	13.3	23.7	45.9	11.5	1.2	1.4	1.0	100.0	
London total	6.7	13.5	12.1	35.3	16.1	3.9	6.5	5.9	100.0	

Living arrangements	Number	%	Total %
Living in a couple	386	40.3	39.9
Not living in a couple	572	59.7	60.1
Lone parent	87	9.1	15.0
Living alone	115	12.0	14.8

Housing and amenities

Accommodation type

House or bungalow	531	54.1	59.6
Flat, maisonette or apartment	422	43.0	38.4
Caravan or other temporary structure	0	0.0	0.1
Households in shared accommodation	3	0.3	0.6
Living in communal establishments	26	2.6	1.3

Tenure

Owner occupier*	555	57.9	58.4
Council rented	61	6.4	16.7
Other social rented	39	4.1	8.8
Private rented	278	29.0	14.4
Living rent free	25	2.6	1.7

Occupancy rating

0 or more	712	74.6	78.7
-1 or less	242	25.4	21.3

Central heating

Accommodation with	917	95.9	94.1
Accommodation without	39	4.1	5.9

People in households with

Access to at least one car	694	72.6	70.9
Without access to car	262	27.4	29.1

Health

General health

Good health	823	83.7	70.8
Fairly good health	134	13.6	20.9
Not good health	26	2.6	8.3

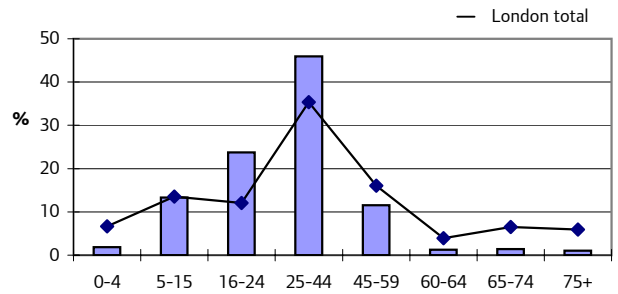
Limiting long term illness (LLTI)

Has a LLTI	52	5.3	15.5
Does not have a LLTI	930	94.7	84.5

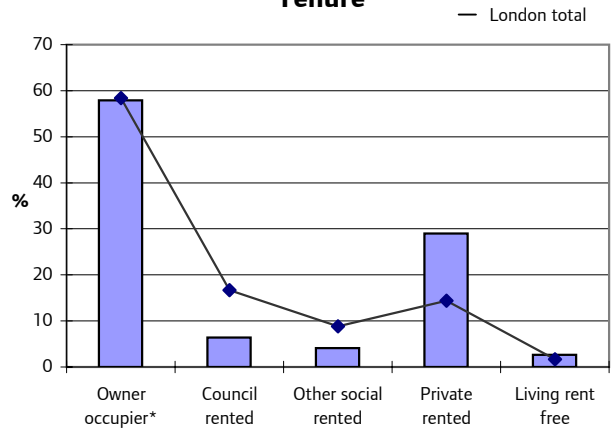
Qualifications (aged 16-74)

No qualifications or level unknown	79	9.6	29.2
Lower level qualifications	361	43.9	39.8
Higher level qualifications	383	46.5	31.0

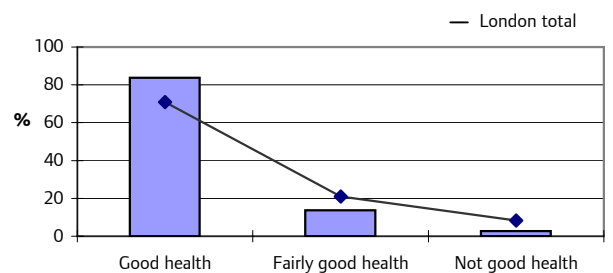
Age structure



Tenure



General health

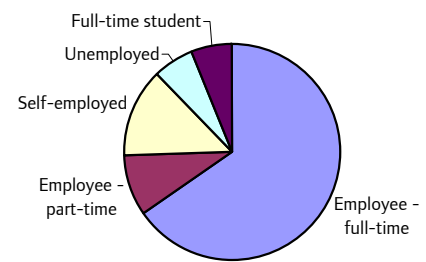


Source: 2001 Census, Commissioned Table SCT021 (C0116)

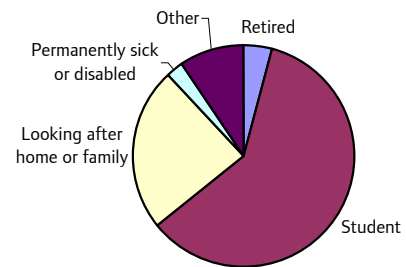
© Crown Copyright.

	Number	%	Total %
All persons 16-74	825		
Economically active	532	64.5	67.6
As a % of economically active			
Employee - full-time	348	65.4	63.1
Employee - part-time	48	9.0	12.8
Self-employed	71	13.3	13.3
Unemployed	32	6.0	6.5
Full-time student	33	6.2	4.4
Economically inactive	293	35.5	32.4
As a % of economically inactive			
Retired	12	4.1	30.2
Student	176	60.1	20.2
Looking after home or family	70	23.9	22.1
Permanently sick or disabled	7	2.4	14.1
Other	28	9.6	13.4
Students 16-74	209	25.3	9.5
Employment Rate 16-74		75.8	66.6

Economic activity by type



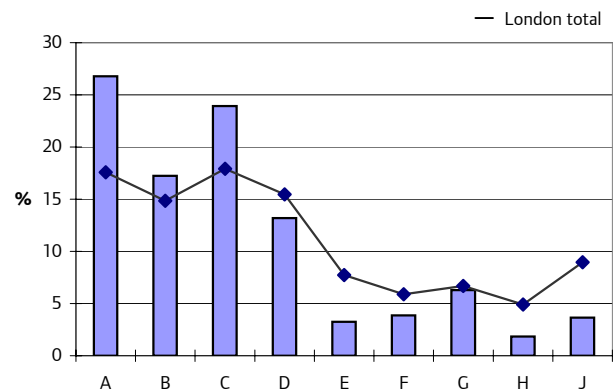
Economic inactivity by type



Employment 16-74

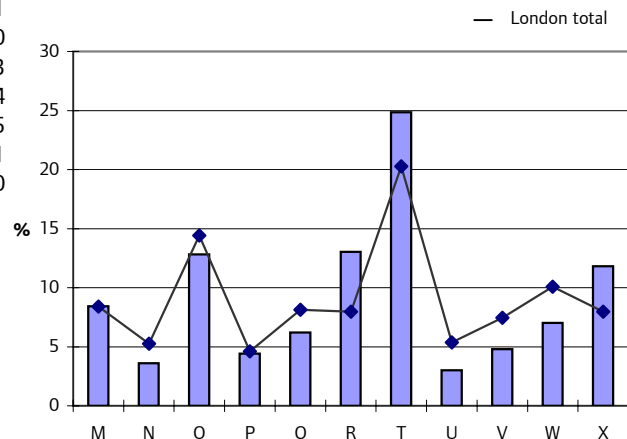
Occupation		Number	%	Total %
Total		493	100.0	100.0
Managers & senior officials	A	132	26.8	17.6
Professional occupations	B	85	17.2	14.9
Associate professionals**	C	118	23.9	17.9
Administrative ***	D	65	13.2	15.5
Skilled trades occupations	E	16	3.2	7.7
Personal service occupations	F	19	3.9	5.9
Sales & customer service occupations	G	31	6.3	6.7
Process; plant & machine operative	H	9	1.8	4.9
Elementary occupations	J	18	3.7	9.0

Occupational breakdown



Industry		Number	%	Total %
Total		499	100.0	100.0
Manufacturing & primary#	M	42	8.4	8.4
Construction	N	18	3.6	5.3
Wholesale & retail trade	O	64	12.8	14.4
Hotels & restaurants	P	22	4.4	4.6
Transport; storage & communications	Q	31	6.2	8.1
Financial intermediation	R	65	13.0	8.0
Real estate; renting##	T	124	24.8	20.3
Public administration###	U	15	3.0	5.4
Education	V	24	4.8	7.5
Health & social work	W	35	7.0	10.1
Other	X	59	11.8	8.0

Industry breakdown



* Owner occupier includes with a mortgage and part rent - part buy
 ** Associate professionals & technical occupations
 *** Administrative & secretarial occupations
 # includes agriculture, fishing, mining and utilities
 ## Real estate; renting & business activities
 ### Public administration & defence; social security

Profile of those Living in London born in: Egypt

Demography

By sex	Number	%	Total %
Total	9,120		
Male	5,121	56.2	48.4
Female	3,999	43.8	51.6

By sex and age	0-4	5-15	16-24	25-44	45-59	60-64	65-74	75+	All Ages
Total	111	357	369	2,405	3,504	594	970	810	9,120
Male	62	179	185	1,409	2,190	327	484	285	5,121
Female	49	178	184	996	1,314	267	486	525	3,999
Percentage by age group	1.2	3.9	4.0	26.4	38.4	6.5	10.6	8.9	100.0
London total	6.7	13.5	12.1	35.3	16.1	3.9	6.5	5.9	100.0

Living arrangements	Number	%	Total %
Living in a couple	5,300	59.1	39.9
Not living in a couple	3,668	40.9	60.1
Lone parent	805	9.0	15.0
Living alone	1,716	19.1	14.8

Housing and amenities

Accommodation type

House or bungalow	4,818	52.8	59.6
Flat, maisonette or apartment	4,076	44.7	38.4
Caravan or other temporary structure	0	0.0	0.1
Households in shared accommodation	75	0.8	0.6
Living in communal establishments	152	1.7	1.3

Tenure

Owner occupier*	5,473	61.0	58.4
Council rented	1,057	11.8	16.7
Other social rented	838	9.3	8.8
Private rented	1,375	15.3	14.4
Living rent free	231	2.6	1.7

Occupancy rating

0 or more	6,651	74.1	78.7
-1 or less	2,321	25.9	21.3

Central heating

Accommodation with	8,489	94.6	94.1
Accommodation without	483	5.4	5.9

People in households with

Access to at least one car	6,368	71.0	70.9
Without access to car	2,600	29.0	29.1

Health

General health

Good health	5,342	58.6	70.8
Fairly good health	2,422	26.6	20.9
Not good health	1,356	14.9	8.3

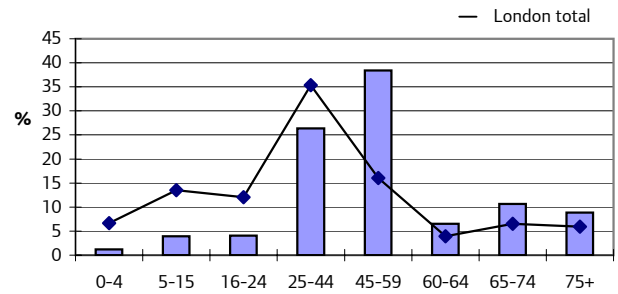
Limiting long term illness (LLTI)

Has a LLTI	2,239	24.6	15.5
Does not have a LLTI	6,881	75.4	84.5

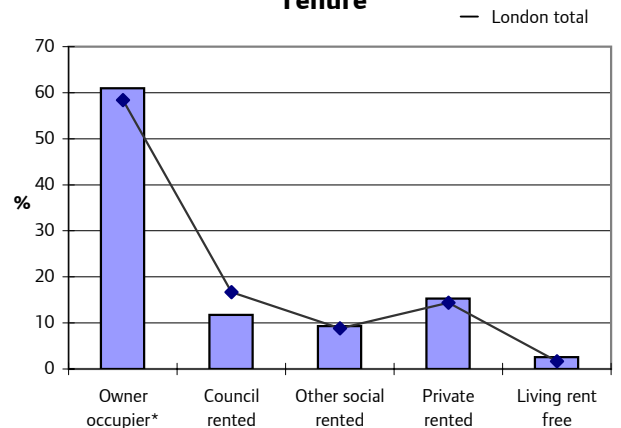
Qualifications (aged 16-74)

No qualifications or level unknown	1,698	21.7	29.2
Lower level qualifications	2,218	28.3	39.8
Higher level qualifications	3,926	50.1	31.0

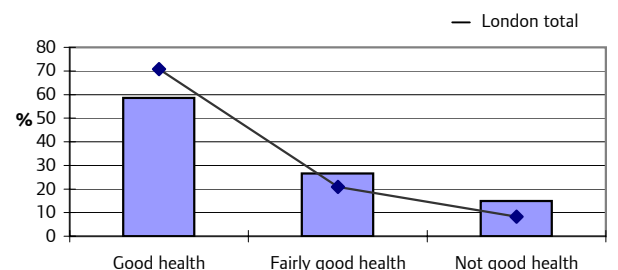
Age structure



Tenure



General health

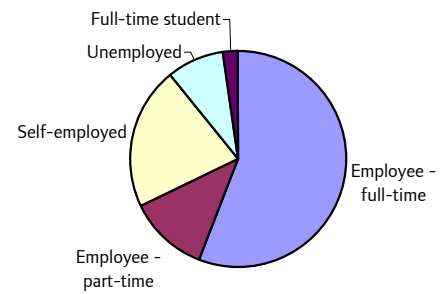


Source: 2001 Census, Commissioned Table SCT021 (C0116)

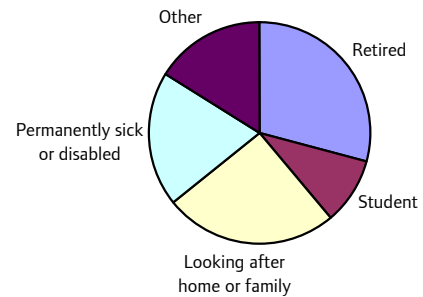
© Crown Copyright.

	Number	%	Total %
All persons 16-74	7,844		
Economically active	4,659	59.4	67.6
As a % of economically active			
Employee - full-time	2,603	55.9	63.1
Employee - part-time	549	11.8	12.8
Self-employed	997	21.4	13.3
Unemployed	406	8.7	6.5
Full-time student	104	2.2	4.4
Economically inactive	3,185	40.6	32.4
As a % of economically inactive			
Retired	926	29.1	30.2
Student	316	9.9	20.2
Looking after home or family	799	25.1	22.1
Permanently sick or disabled	628	19.7	14.1
Other	516	16.2	13.4
Students 16-74	420	5.4	9.5
Employment Rate 16-74		55.9	66.6

Economic activity by type



Economic inactivity by type

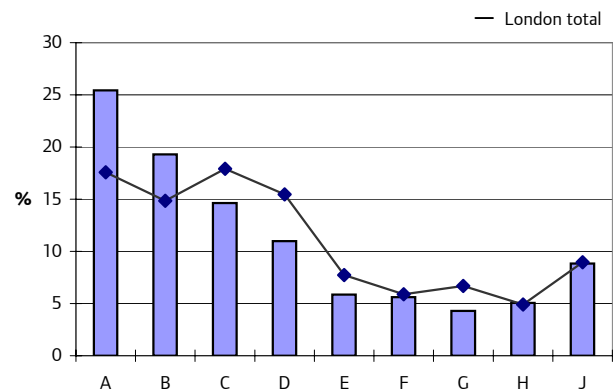


Employment 16-74

Occupation

Occupation	Number	%	Total %
Total	4,228	100.0	100.0
Managers & senior officials A	1,075	25.4	17.6
Professional occupations B	816	19.3	14.9
Associate professionals** C	619	14.6	17.9
Administrative *** D	464	11.0	15.5
Skilled trades occupations E	248	5.9	7.7
Personal service occupations F	237	5.6	5.9
Sales & customer service occupations G	182	4.3	6.7
Process; plant & machine operative H	214	5.1	4.9
Elementary occupations J	373	8.8	9.0

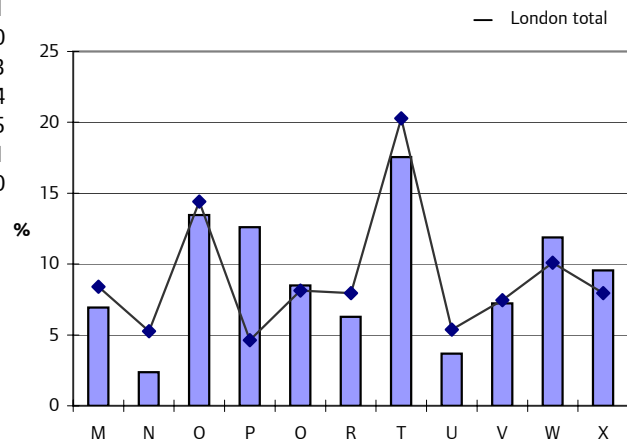
Occupational breakdown



Industry

Industry	Number	%	Total %
Total	4,223	100.0	100.0
Manufacturing & primary# M	293	6.9	8.4
Construction N	100	2.4	5.3
Wholesale & retail trade O	568	13.5	14.4
Hotels & restaurants P	532	12.6	4.6
Transport; storage & communications Q	359	8.5	8.1
Financial intermediation R	265	6.3	8.0
Real estate; renting## T	741	17.5	20.3
Public administration### U	155	3.7	5.4
Education V	305	7.2	7.5
Health & social work W	502	11.9	10.1
Other X	403	9.5	8.0

Industry breakdown



* Owner occupier includes with a mortgage and part rent - part buy
 ** Associate professionals & technical occupations
 *** Administrative & secretarial occupations
 # includes agriculture, fishing, mining and utilities
 ## Real estate; renting & business activities
 ### Public administration & defence; social security

Source: 2001 Census, Commissioned Table SCT021 (C0116)
 © Crown Copyright.

Profile of those Living in London born in: Iraq

Demography

By sex	Number	%	Total %
Total	17,294		
Male	9,556	55.3	48.4
Female	7,738	44.7	51.6

By sex and age	0-4	5-15	16-24	25-44	45-59	60-64	65-74	75+	All Ages
Total	242	1,964	1,999	7,201	3,649	696	1,041	502	17,294
Male	126	1,065	1,114	3,955	2,144	371	534	247	9,556
Female	116	899	885	3,246	1,505	325	507	255	7,738
Percentage by age group	1.4	11.4	11.6	41.6	21.1	4.0	6.0	2.9	100.0
London total	6.7	13.5	12.1	35.3	16.1	3.9	6.5	5.9	100.0

Living arrangements	Number	%	Total %
Living in a couple	8,300	48.8	39.9
Not living in a couple	8,725	51.2	60.1
Lone parent	2,055	12.1	15.0
Living alone	2,071	12.2	14.8

Housing and amenities

Accommodation type

House or bungalow	8,216	47.5	59.6
Flat, maisonette or apartment	8,501	49.1	38.4
Caravan or other temporary structure	43	0.2	0.1
Households in shared accommodation	268	1.5	0.6
Living in communal establishments	269	1.6	1.3

Tenure

Owner occupier*	5,825	34.2	58.4
Council rented	2,820	16.6	16.7
Other social rented	2,645	15.5	8.8
Private rented	4,481	26.3	14.4
Living rent free	1,255	7.4	1.7

Occupancy rating

0 or more	9,483	55.7	78.7
-1 or less	7,543	44.3	21.3

Central heating

Accommodation with	16,177	95.0	94.1
Accommodation without	849	5.0	5.9

People in households with

Access to at least one car	10,943	64.3	70.9
Without access to car	6,082	35.7	29.1

Health

General health

Good health	10,275	59.4	70.8
Fairly good health	4,219	24.4	20.9
Not good health	2,800	16.2	8.3

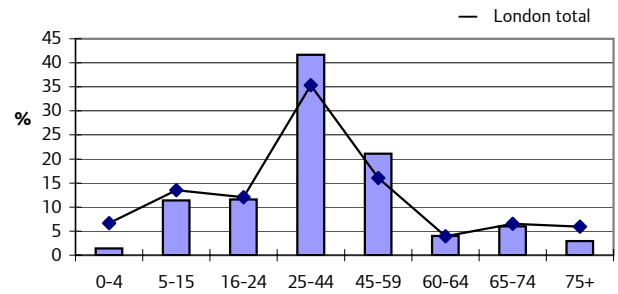
Limiting long term illness (LLTI)

Has a LLTI	4,419	25.6	15.5
Does not have a LLTI	12,875	74.4	84.5

Qualifications (aged 16-74)

No qualifications or level unknown	3,761	25.8	29.2
Lower level qualifications	3,994	27.4	39.8
Higher level qualifications	6,831	46.8	31.0

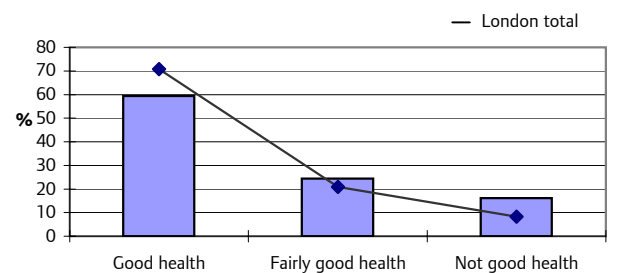
Age structure



Tenure

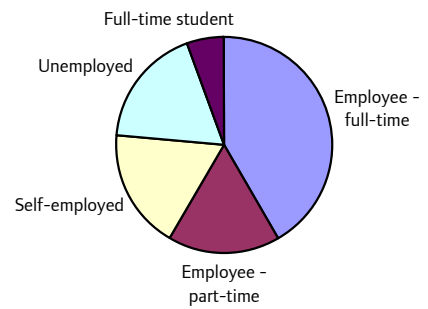


General health

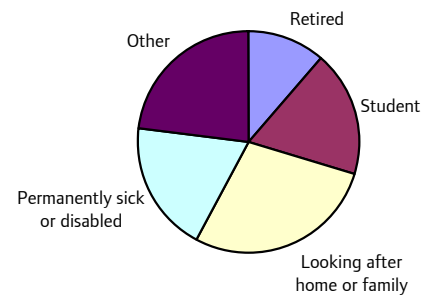


	Number	%	Total %
All persons 16-74	14,583		
Economically active	6,618	45.4	67.6
As a % of economically active			
Employee - full-time	2,753	41.6	63.1
Employee - part-time	1,105	16.7	12.8
Self-employed	1,200	18.1	13.3
Unemployed	1,193	18.0	6.5
Full-time student	367	5.5	4.4
Economically inactive	7,965	54.6	32.4
As a % of economically inactive			
Retired	903	11.3	30.2
Student	1,470	18.5	20.2
Looking after home or family	2,233	28.0	22.1
Permanently sick or disabled	1,532	19.2	14.1
Other	1,827	22.9	13.4
Students 16-74	1,837	12.6	9.5
Employment Rate 16-74		39.7	66.6

Economic activity by type



Economic inactivity by type

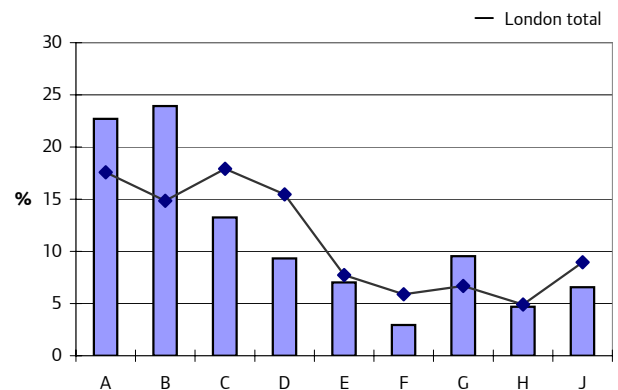


Employment 16-74

Occupation

Occupation	Total	%	London total
Total	5,279	100.0	100.0
Managers & senior officials A	1,199	22.7	17.6
Professional occupations B	1,263	23.9	14.9
Associate professionals** C	700	13.3	17.9
Administrative *** D	493	9.3	15.5
Skilled trades occupations E	371	7.0	7.7
Personal service occupations F	155	2.9	5.9
Sales & customer service occupations G	503	9.5	6.7
Process; plant & machine operative H	248	4.7	4.9
Elementary occupations J	347	6.6	9.0

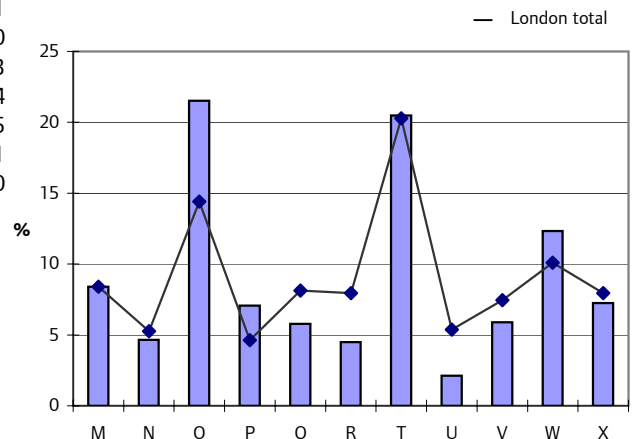
Occupational breakdown



Industry

Industry	Total	%	London total
Total	5,284	100.0	100.0
Manufacturing & primary# M	444	8.4	8.4
Construction N	246	4.7	5.3
Wholesale & retail trade O	1,137	21.5	14.4
Hotels & restaurants P	373	7.1	4.6
Transport; storage & communications Q	306	5.8	8.1
Financial intermediation R	237	4.5	8.0
Real estate; renting## T	1,082	20.5	20.3
Public administration### U	112	2.1	5.4
Education V	312	5.9	7.5
Health & social work W	652	12.3	10.1
Other X	383	7.2	8.0

Industry breakdown



* Owner occupier includes with a mortgage and part rent - part buy
 ** Associate professionals & technical occupations
 *** Administrative & secretarial occupations
 # includes agriculture, fishing, mining and utilities
 ## Real estate; renting & business activities
 ### Public administration & defence; social security

Profile of those Living in London born in: Jordan

Demography

By sex	Number	%	Total %							
Total	968									
Male	565	58.4	48.4							
Female	403	41.6	51.6							
By sex and age	0-4	5-15	16-24	25-44	45-59	60-64	65-74	75+	All Ages	
Total	39	124	147	424	191	26	12	5	968	
Male	17	63	80	259	122	11	8	5	565	
Female	22	61	67	165	69	15	4	0	403	
Percentage by age group	4.0	12.8	15.2	43.8	19.7	2.7	1.2	0.5	100.0	
London total	6.7	13.5	12.1	35.3	16.1	3.9	6.5	5.9	100.0	

Living arrangements	Number	%	Total %
Living in a couple	415	45.0	39.9
Not living in a couple	508	55.0	60.1
Lone parent	97	10.6	15.0
Living alone	137	14.9	14.8

Housing and amenities

Accommodation type

House or bungalow	410	42.4	59.6
Flat, maisonette or apartment	506	52.3	38.4
Caravan or other temporary structure	0	0.0	0.1
Households in shared accommodation	0	0.0	0.6
Living in communal establishments	51	5.3	1.3

Tenure

Owner occupier*	433	47.2	58.4
Council rented	99	10.8	16.7
Other social rented	61	6.6	8.8
Private rented	296	32.2	14.4
Living rent free	29	3.2	1.7

Occupancy rating

0 or more	587	63.8	78.7
-1 or less	333	36.2	21.3

Central heating

Accommodation with	874	95.5	94.1
Accommodation without	41	4.5	5.9

People in households with

Access to at least one car	599	65.3	70.9
Without access to car	318	34.7	29.1

Health

General health

Good health	777	80.3	70.8
Fairly good health	144	14.9	20.9
Not good health	47	4.9	8.3

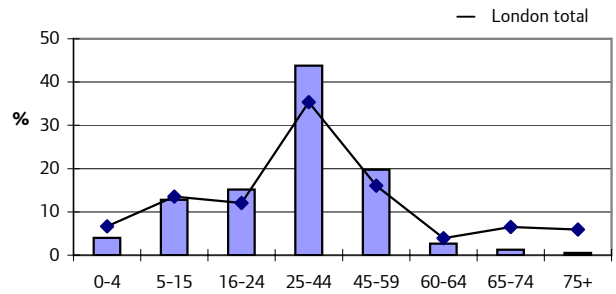
Limiting long term illness (LLTI)

Has a LLTI	90	9.3	15.5
Does not have a LLTI	880	90.7	84.5

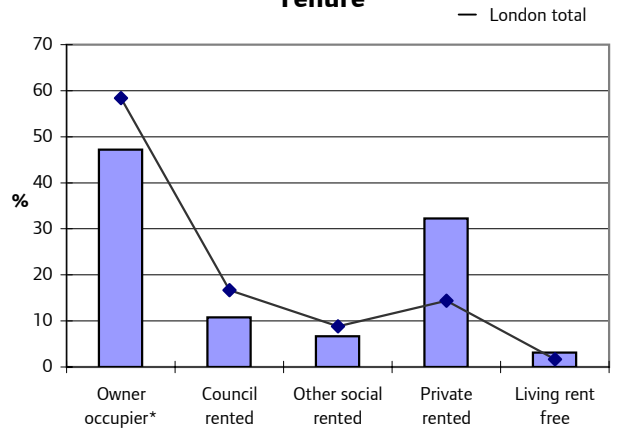
Qualifications (aged 16-74)

No qualifications or level unknown	91	11.3	29.2
Lower level qualifications	221	27.6	39.8
Higher level qualifications	490	61.1	31.0

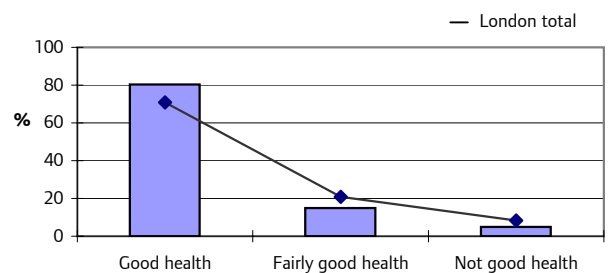
Age structure



Tenure



General health

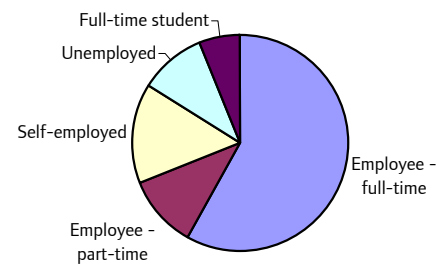


Source: 2001 Census, Commissioned Table SCT021 (C0116)

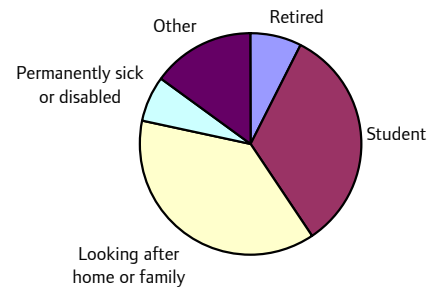
© Crown Copyright.

	Number	%	Total %
All persons 16-74	807		
Economically active	481	59.6	67.6
As a % of economically active			
Employee - full-time	279	58.0	63.1
Employee - part-time	53	11.0	12.8
Self-employed	71	14.8	13.3
Unemployed	48	10.0	6.5
Full-time student	30	6.2	4.4
Economically inactive	326	40.4	32.4
As a % of economically inactive			
Retired	24	7.4	30.2
Student	108	33.1	20.2
Looking after home or family	123	37.7	22.1
Permanently sick or disabled	22	6.7	14.1
Other	49	15.0	13.4
Students 16-74	138	17.1	9.5
Employment Rate 16-74		60.2	66.6

Economic activity by type



Economic inactivity by type

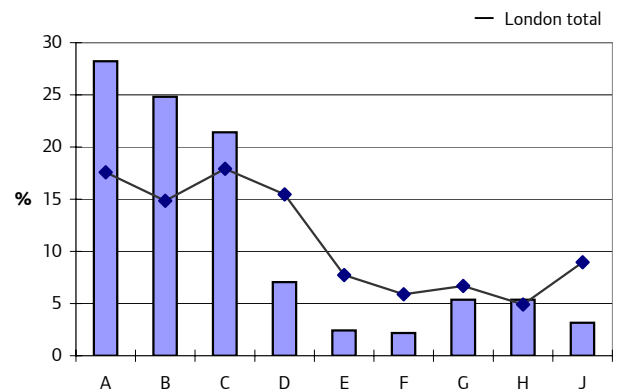


Employment 16-74

Occupation

Occupation	Number	%	Total %
Total	411	100.0	100.0
Managers & senior officials A	116	28.2	17.6
Professional occupations B	102	24.8	14.9
Associate professionals** C	88	21.4	17.9
Administrative *** D	29	7.1	15.5
Skilled trades occupations E	10	2.4	7.7
Personal service occupations F	9	2.2	5.9
Sales & customer service occupations G	22	5.4	6.7
Process; plant & machine operative H	22	5.4	4.9
Elementary occupations J	13	3.2	9.0

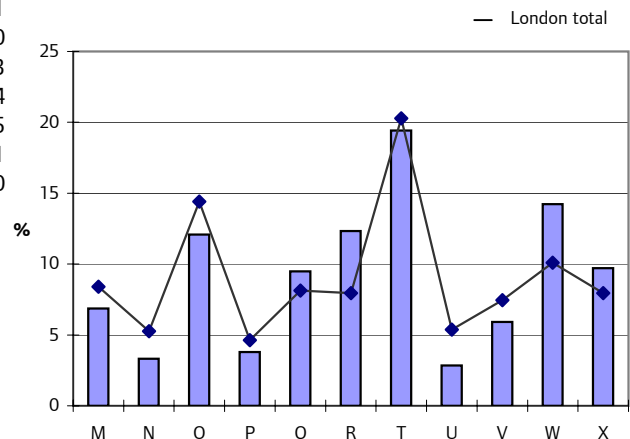
Occupational breakdown



Industry

Industry	Number	%	Total %
Total	422	100.0	100.0
Manufacturing & primary# M	29	6.9	8.4
Construction N	14	3.3	5.3
Wholesale & retail trade O	51	12.1	14.4
Hotels & restaurants P	16	3.8	4.6
Transport; storage & communications Q	40	9.5	8.1
Financial intermediation R	52	12.3	8.0
Real estate; renting## T	82	19.4	20.3
Public administration### U	12	2.8	5.4
Education V	25	5.9	7.5
Health & social work W	60	14.2	10.1
Other X	41	9.7	8.0

Industry breakdown



* Owner occupier includes with a mortgage and part rent - part buy
 ** Associate professionals & technical occupations
 *** Administrative & secretarial occupations
 # includes agriculture, fishing, mining and utilities
 ## Real estate; renting & business activities
 ### Public administration & defence; social security

Source: 2001 Census, Commissioned Table SCT021 (C0116)
 © Crown Copyright.

Profile of those Living in London born in: Kuwait

Demography

By sex	Number	%	Total %
Total	2,672		
Male	1,393	52.1	48.4
Female	1,279	47.9	51.6

By sex and age	0-4	5-15	16-24	25-44	45-59	60-64	65-74	75+	All Ages
Total	64	472	788	1,192	129	11	13	3	2,672
Male	29	267	391	626	63	8	6	3	1,393
Female	35	205	397	566	66	3	7	0	1,279
Percentage by age group	2.4	17.7	29.5	44.6	4.8	0.4	0.5	0.1	100.0
London total	6.7	13.5	12.1	35.3	16.1	3.9	6.5	5.9	100.0

Living arrangements	Number	%	Total %
Living in a couple	808	30.9	39.9
Not living in a couple	1,807	69.1	60.1
Lone parent	458	17.5	15.0
Living alone	255	9.7	14.8

Housing and amenities

Accommodation type

House or bungalow	1,234	46.3	59.6
Flat, maisonette or apartment	1,324	49.6	38.4
Caravan or other temporary structure	18	0.7	0.1
Households in shared accommodation	38	1.4	0.6
Living in communal establishments	53	2.0	1.3

Tenure

Owner occupier*	813	31.2	58.4
Council rented	352	13.5	16.7
Other social rented	444	17.0	8.8
Private rented	721	27.6	14.4
Living rent free	278	10.7	1.7

Occupancy rating

0 or more	1,341	51.3	78.7
-1 or less	1,275	48.7	21.3

Central heating

Accommodation with	2,478	94.7	94.1
Accommodation without	138	5.3	5.9

People in households with

Access to at least one car	1,672	63.8	70.9
Without access to car	947	36.2	29.1

Health

General health

Good health	2,058	77.2	70.8
Fairly good health	420	15.7	20.9
Not good health	189	7.1	8.3

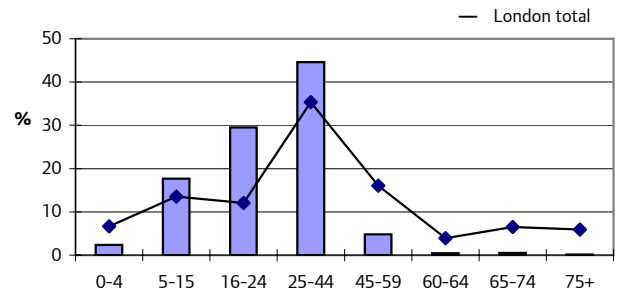
Limiting long term illness (LLTI)

Has a LLTI	305	11.4	15.5
Does not have a LLTI	2,364	88.6	84.5

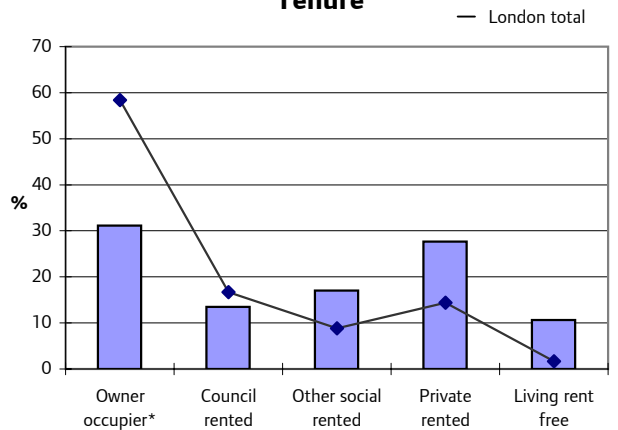
Qualifications (aged 16-74)

No qualifications or level unknown	484	22.7	29.2
Lower level qualifications	904	42.4	39.8
Higher level qualifications	744	34.9	31.0

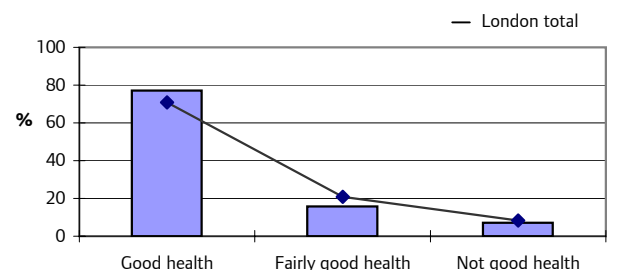
Age structure



Tenure



General health

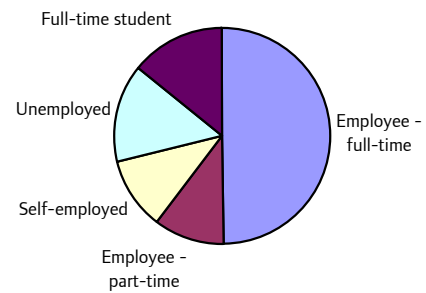


Source: 2001 Census, Commissioned Table SCT021 (C0116)

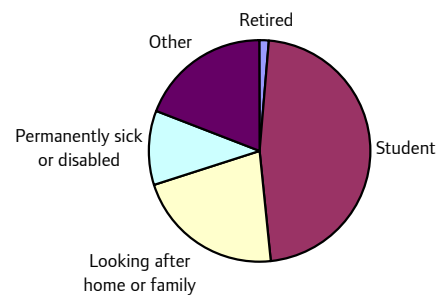
© Crown Copyright.

	Number	%	Total %
All persons 16-74	2,134		
Economically active	973	45.6	67.6
As a % of economically active			
Employee - full-time	484	49.7	63.1
Employee - part-time	102	10.5	12.8
Self-employed	107	11.0	13.3
Unemployed	141	14.5	6.5
Full-time student	139	14.3	4.4
Economically inactive	1,161	54.4	32.4
As a % of economically inactive			
Retired	15	1.3	30.2
Student	547	47.1	20.2
Looking after home or family	250	21.5	22.1
Permanently sick or disabled	125	10.8	14.1
Other	224	19.3	13.4
Students 16-74	686	32.1	9.5
Employment Rate 16-74		47.9	66.6

Economic activity by type



Economic inactivity by type

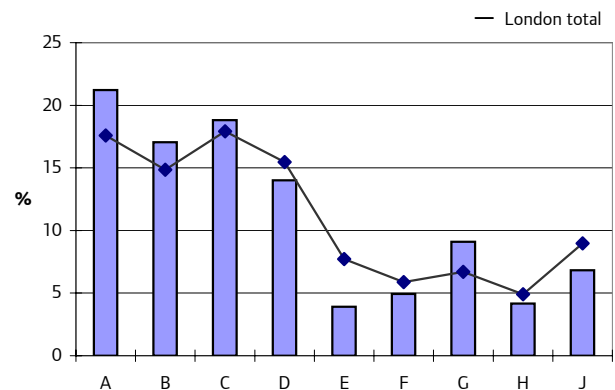


Employment 16-74

Occupation

Occupation	Number	%	Total %
Total	792	100.0	100.0
Managers & senior officials A	168	21.2	17.6
Professional occupations B	135	17.0	14.9
Associate professionals** C	149	18.8	17.9
Administrative *** D	111	14.0	15.5
Skilled trades occupations E	31	3.9	7.7
Personal service occupations F	39	4.9	5.9
Sales & customer service occupations G	72	9.1	6.7
Process; plant & machine operative H	33	4.2	4.9
Elementary occupations J	54	6.8	9.0

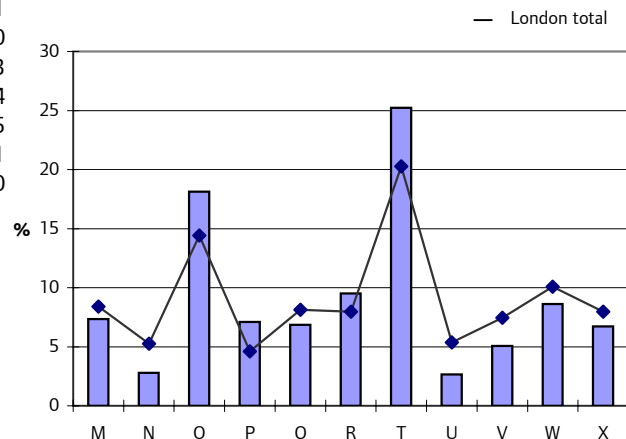
Occupational breakdown



Industry

Industry	Number	%	Total %
Total	789	100.0	100.0
Manufacturing & primary# M	58	7.4	8.4
Construction N	22	2.8	5.3
Wholesale & retail trade O	143	18.1	14.4
Hotels & restaurants P	56	7.1	4.6
Transport; storage & communications Q	54	6.8	8.1
Financial intermediation R	75	9.5	8.0
Real estate; renting## T	199	25.2	20.3
Public administration### U	21	2.7	5.4
Education V	40	5.1	7.5
Health & social work W	68	8.6	10.1
Other X	53	6.7	8.0

Industry breakdown



* Owner occupier includes with a mortgage and part rent - part buy
 ** Associate professionals & technical occupations
 *** Administrative & secretarial occupations
 # includes agriculture, fishing, mining and utilities
 ## Real estate; renting & business activities
 ### Public administration & defence; social security

Profile of those Living in London born in: Lebanon

Demography

By sex	Number	%	Total %
Total	7,418		
Male	4,112	55.4	48.4
Female	3,306	44.6	51.6

By sex and age	0-4	5-15	16-24	25-44	45-59	60-64	65-74	75+	All Ages
Total	100	557	878	4,137	1,189	225	217	115	7,418
Male	60	306	459	2,379	642	121	103	42	4,112
Female	40	251	419	1,758	547	104	114	73	3,306
Percentage by age group	1.3	7.5	11.8	55.8	16.0	3.0	2.9	1.6	100.0
London total	6.7	13.5	12.1	35.3	16.1	3.9	6.5	5.9	100.0

Living arrangements	Number	%	Total %
Living in a couple	3,795	51.7	39.9
Not living in a couple	3,552	48.3	60.1
Lone parent	838	11.4	15.0
Living alone	894	12.2	14.8

Housing and amenities

Accommodation type

House or bungalow	2,996	40.4	59.6
Flat, maisonette or apartment	4,257	57.4	38.4
Caravan or other temporary structure	14	0.2	0.1
Households in shared accommodation	81	1.1	0.6
Living in communal establishments	69	0.9	1.3

Tenure

Owner occupier*	3,156	42.9	58.4
Council rented	1,006	13.7	16.7
Other social rented	788	10.7	8.8
Private rented	2,059	28.0	14.4
Living rent free	341	4.6	1.7

Occupancy rating

0 or more	4,814	65.5	78.7
-1 or less	2,534	34.5	21.3

Central heating

Accommodation with	6,994	95.2	94.1
Accommodation without	354	4.8	5.9

People in households with

Access to at least one car	4,954	67.4	70.9
Without access to car	2,395	32.6	29.1

Health

General health

Good health	5,528	74.5	70.8
Fairly good health	1,343	18.1	20.9
Not good health	547	7.4	8.3

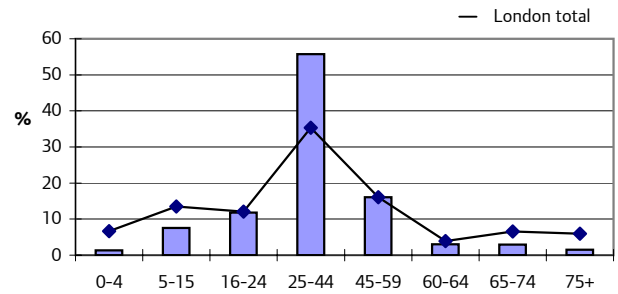
Limiting long term illness (LLTI)

Has a LLTI	1,006	13.6	15.5
Does not have a LLTI	6,412	86.4	84.5

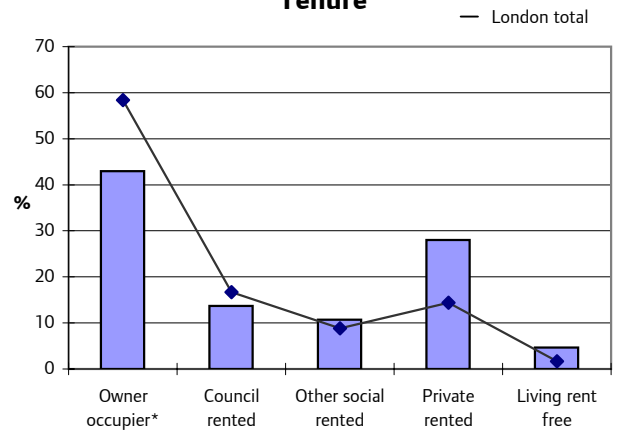
Qualifications (aged 16-74)

No qualifications or level unknown	1,764	26.5	29.2
Lower level qualifications	2,069	31.1	39.8
Higher level qualifications	2,813	42.3	31.0

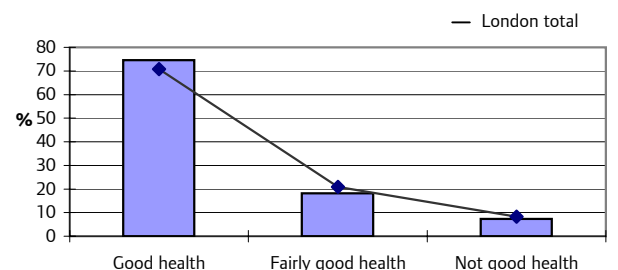
Age structure



Tenure

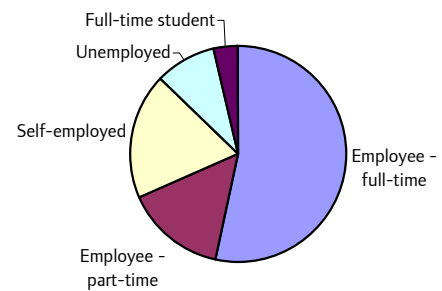


General health

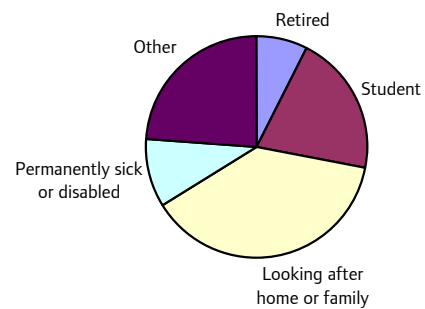


	Number	%	Total %
All persons 16-74	6,644		
Economically active	3,698	55.7	67.6
As a % of economically active			
Employee - full-time	1,976	53.4	63.1
Employee - part-time	548	14.8	12.8
Self-employed	705	19.1	13.3
Unemployed	337	9.1	6.5
Full-time student	132	3.6	4.4
Economically inactive	2,946	44.3	32.4
As a % of economically inactive			
Retired	218	7.4	30.2
Student	605	20.5	20.2
Looking after home or family	1,126	38.2	22.1
Permanently sick or disabled	297	10.1	14.1
Other	700	23.8	13.4
Students 16-74	737	11.1	9.5
Employment Rate 16-74		54.7	66.6

Economic activity by type



Economic inactivity by type

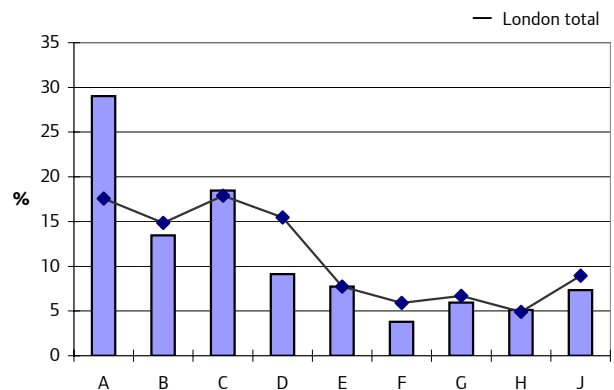


Employment 16-74

Occupation

Occupation	Total	%	London total
Total	3,333	100.0	100.0
Managers & senior officials A	967	29.0	17.6
Professional occupations B	449	13.5	14.9
Associate professionals** C	616	18.5	17.9
Administrative *** D	304	9.1	15.5
Skilled trades occupations E	258	7.7	7.7
Personal service occupations F	127	3.8	5.9
Sales & customer service occupations G	198	5.9	6.7
Process; plant & machine operative H	170	5.1	4.9
Elementary occupations J	244	7.3	9.0

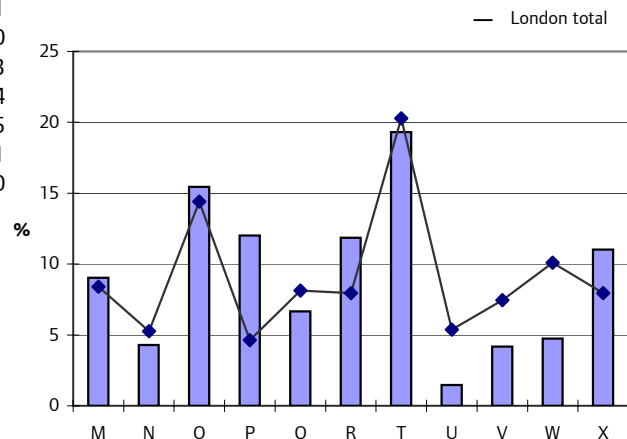
Occupational breakdown



Industry

Industry	Total	%	London total
Total	3,332	100.0	100.0
Manufacturing & primary# M	301	9.0	8.4
Construction N	143	4.3	5.3
Wholesale & retail trade O	515	15.5	14.4
Hotels & restaurants P	400	12.0	4.6
Transport; storage & communications Q	222	6.7	8.1
Financial intermediation R	395	11.9	8.0
Real estate; renting## T	643	19.3	20.3
Public administration### U	49	1.5	5.4
Education V	139	4.2	7.5
Health & social work W	158	4.7	10.1
Other X	367	11.0	8.0

Industry breakdown



* Owner occupier includes with a mortgage and part rent - part buy
 ** Associate professionals & technical occupations
 *** Administrative & secretarial occupations
 # includes agriculture, fishing, mining and utilities
 ## Real estate; renting & business activities
 ### Public administration & defence; social security

Profile of those Living in London born in: Libya

Demography

By sex	Number	%	Total %
Total	1,832		
Male	1,035	56.5	48.4
Female	797	43.5	51.6

By sex and age	0-4	5-15	16-24	25-44	45-59	60-64	65-74	75+	All Ages
Total	44	143	261	912	353	45	54	20	1,832
Male	20	59	140	531	208	31	37	9	1,035
Female	24	84	121	381	145	14	17	11	797
Percentage by age group	2.4	7.8	14.2	49.8	19.3	2.5	2.9	1.1	100.0
London total	6.7	13.5	12.1	35.3	16.1	3.9	6.5	5.9	100.0

Living arrangements	Number	%	Total %
Living in a couple	877	48.6	39.9
Not living in a couple	928	51.4	60.1
Lone parent	210	11.6	15.0
Living alone	204	11.3	14.8

Housing and amenities

Accommodation type

House or bungalow	933	51.0	59.6
Flat, maisonette or apartment	850	46.4	38.4
Caravan or other temporary structure	3	0.2	0.1
Households in shared accommodation	18	1.0	0.6
Living in communal establishments	26	1.4	1.3

Tenure

Owner occupier*	857	47.3	58.4
Council rented	179	9.9	16.7
Other social rented	207	11.4	8.8
Private rented	491	27.1	14.4
Living rent free	79	4.4	1.7

Occupancy rating

0 or more	1,191	65.8	78.7
-1 or less	618	34.2	21.3

Central heating

Accommodation with	1,719	95.1	94.1
Accommodation without	89	4.9	5.9

People in households with

Access to at least one car	1,310	72.5	70.9
Without access to car	496	27.5	29.1

Health

General health

Good health	1,361	74.2	70.8
Fairly good health	329	17.9	20.9
Not good health	143	7.8	8.3

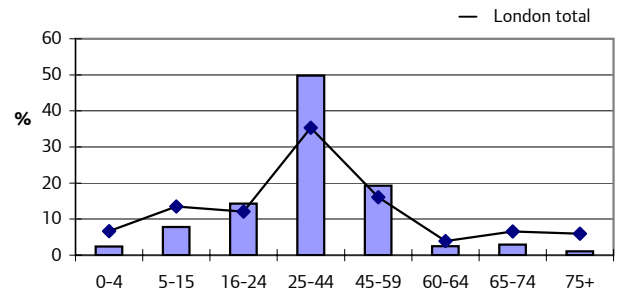
Limiting long term illness (LLTI)

Has a LLTI	234	12.8	15.5
Does not have a LLTI	1,598	87.2	84.5

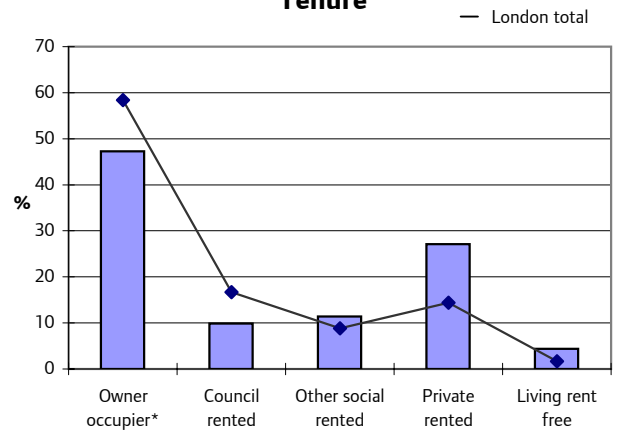
Qualifications (aged 16-74)

No qualifications or level unknown	322	19.8	29.2
Lower level qualifications	529	32.6	39.8
Higher level qualifications	774	47.6	31.0

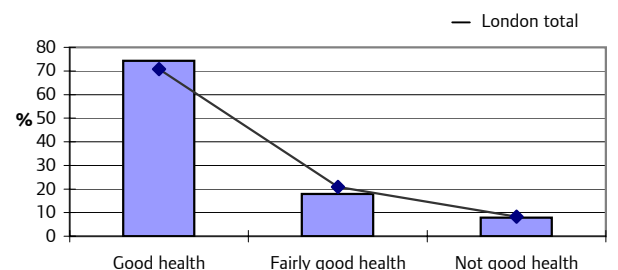
Age structure



Tenure



General health

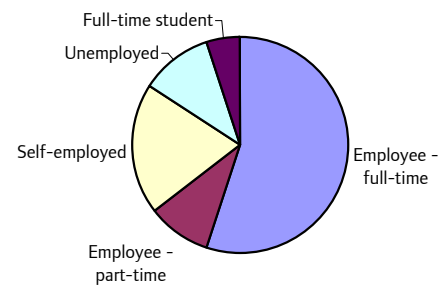


Source: 2001 Census, Commissioned Table SCT021 (C0116)

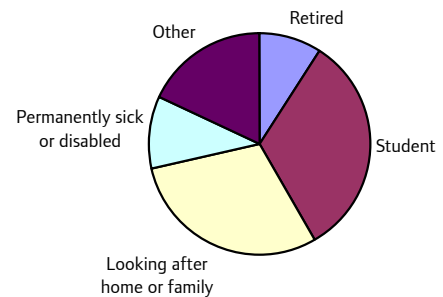
© Crown Copyright.

	Number	%	Total %
All persons 16-74	1,624		
Economically active	950	58.5	67.6
As a % of economically active			
Employee - full-time	523	55.1	63.1
Employee - part-time	90	9.5	12.8
Self-employed	186	19.6	13.3
Unemployed	103	10.8	6.5
Full-time student	48	5.1	4.4
Economically inactive	674	41.5	32.4
As a % of economically inactive			
Retired	61	9.1	30.2
Student	219	32.5	20.2
Looking after home or family	202	30.0	22.1
Permanently sick or disabled	70	10.4	14.1
Other	122	18.1	13.4
Students 16-74	267	16.4	9.5
Employment Rate 16-74		58.9	66.6

Economic activity by type



Economic inactivity by type

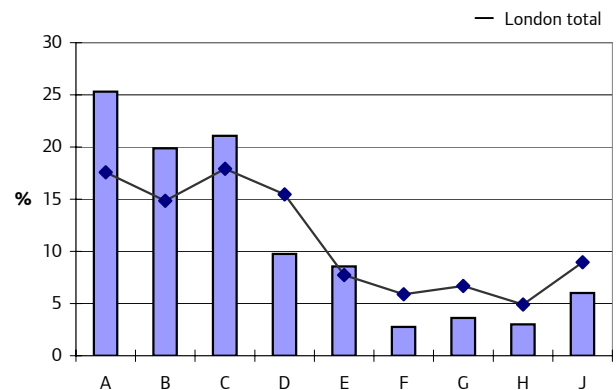


Employment 16-74

Occupation

Occupation	Number	%	Total %
Total	830	100.0	100.0
Managers & senior officials A	210	25.3	17.6
Professional occupations B	165	19.9	14.9
Associate professionals** C	175	21.1	17.9
Administrative *** D	81	9.8	15.5
Skilled trades occupations E	71	8.6	7.7
Personal service occupations F	23	2.8	5.9
Sales & customer service occupations G	30	3.6	6.7
Process; plant & machine operative H	25	3.0	4.9
Elementary occupations J	50	6.0	9.0

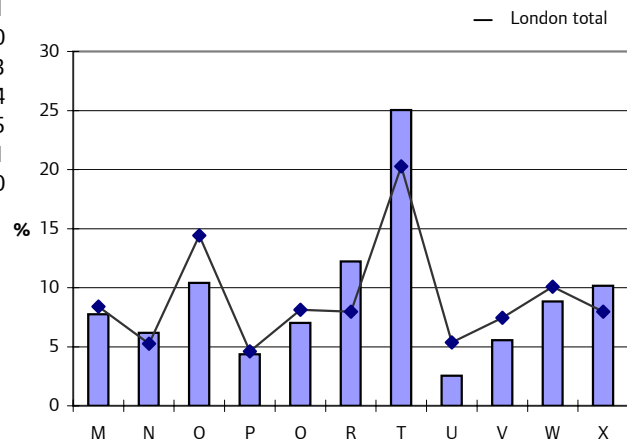
Occupational breakdown



Industry

Industry	Number	%	Total %
Total	827	100.0	100.0
Manufacturing & primary# M	64	7.7	8.4
Construction N	51	6.2	5.3
Wholesale & retail trade O	86	10.4	14.4
Hotels & restaurants P	36	4.4	4.6
Transport; storage & communications Q	58	7.0	8.1
Financial intermediation R	101	12.2	8.0
Real estate; renting## T	207	25.0	20.3
Public administration### U	21	2.5	5.4
Education V	46	5.6	7.5
Health & social work W	73	8.8	10.1
Other X	84	10.2	8.0

Industry breakdown



* Owner occupier includes with a mortgage and part rent - part buy
 ** Associate professionals & technical occupations
 *** Administrative & secretarial occupations
 # includes agriculture, fishing, mining and utilities
 ## Real estate; renting & business activities
 ### Public administration & defence; social security

Source: 2001 Census, Commissioned Table SCT021 (C0116)
 © Crown Copyright.

Profile of those Living in London born in: Morocco

Demography

By sex	Number	%	Total %
Total	7,904		
Male	4,043	51.2	48.4
Female	3,861	48.8	51.6

By sex and age	0-4	5-15	16-24	25-44	45-59	60-64	65-74	75+	All Ages
Total	108	233	466	4,674	1,853	286	219	65	7,904
Male	52	104	154	2,461	962	167	121	22	4,043
Female	56	129	312	2,213	891	119	98	43	3,861
Percentage by age group	1.4	2.9	5.9	59.1	23.4	3.6	2.8	0.8	100.0
London total	6.7	13.5	12.1	35.3	16.1	3.9	6.5	5.9	100.0

Living arrangements	Number	%	Total %
Living in a couple	4,913	62.7	39.9
Not living in a couple	2,922	37.3	60.1
Lone parent	1,063	13.6	15.0
Living alone	908	11.6	14.8

Housing and amenities

Accommodation type

House or bungalow	2,651	33.5	59.6
Flat, maisonette or apartment	5,038	63.7	38.4
Caravan or other temporary structure	6	0.1	0.1
Households in shared accommodation	140	1.8	0.6
Living in communal establishments	70	0.9	1.3

Tenure

Owner occupier*	2,501	31.9	58.4
Council rented	2,540	32.4	16.7
Other social rented	1,467	18.7	8.8
Private rented	1,170	14.9	14.4
Living rent free	150	1.9	1.7

Occupancy rating

0 or more	4,295	54.8	78.7
-1 or less	3,538	45.2	21.3

Central heating

Accommodation with	7,360	94.0	94.1
Accommodation without	473	6.0	5.9

People in households with

Access to at least one car	4,448	56.8	70.9
Without access to car	3,386	43.2	29.1

Health

General health

Good health	4,424	56.0	70.8
Fairly good health	2,164	27.4	20.9
Not good health	1,317	16.7	8.3

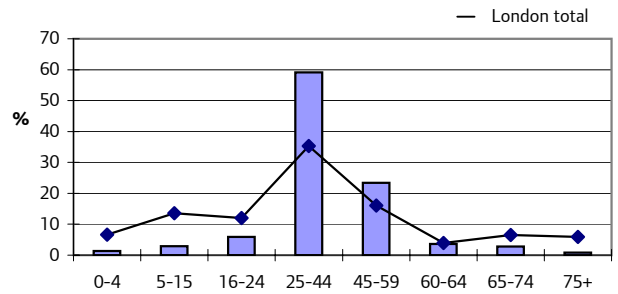
Limiting long term illness (LLTI)

Has a LLTI	1,731	21.9	15.5
Does not have a LLTI	6,173	78.1	84.5

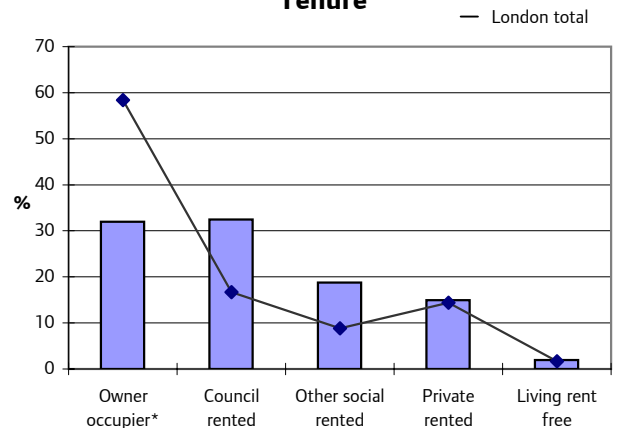
Qualifications (aged 16-74)

No qualifications or level unknown	3,613	48.2	29.2
Lower level qualifications	2,218	29.6	39.8
Higher level qualifications	1,667	22.2	31.0

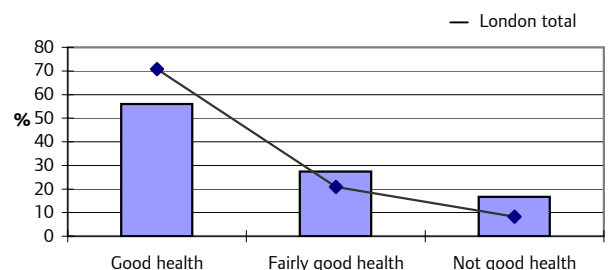
Age structure



Tenure



General health

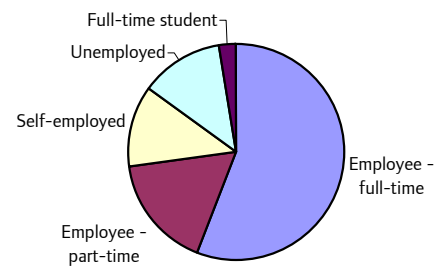


Source: 2001 Census, Commissioned Table SCT021 (C0116)

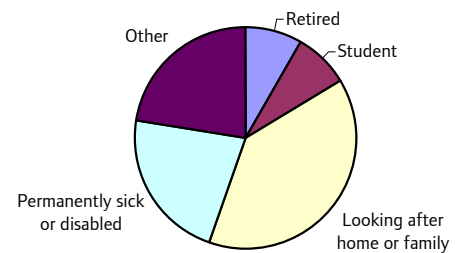
© Crown Copyright.

	Number	%	Total %
All persons 16-74	7,499		
Economically active	4,072	54.3	67.6
As a % of economically active			
Employee - full-time	2,274	55.8	63.1
Employee - part-time	684	16.8	12.8
Self-employed	500	12.3	13.3
Unemployed	509	12.5	6.5
Full-time student	105	2.6	4.4
Economically inactive	3,427	45.7	32.4
As a % of economically inactive			
Retired	284	8.3	30.2
Student	282	8.2	20.2
Looking after home or family	1,326	38.7	22.1
Permanently sick or disabled	764	22.3	14.1
Other	771	22.5	13.4
Students 16-74	387	5.2	9.5
Employment Rate 16-74		48.6	66.6

Economic activity by type



Economic inactivity by type

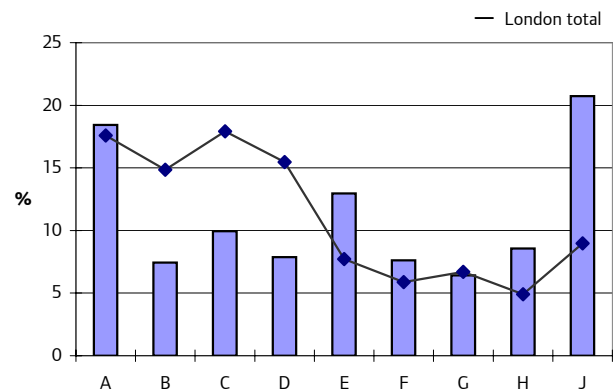


Employment 16-74

Occupation

Occupation	Number	%	Total %
Total	3,531	100.0	100.0
Managers & senior officials A	651	18.4	17.6
Professional occupations B	263	7.4	14.9
Associate professionals** C	351	9.9	17.9
Administrative *** D	278	7.9	15.5
Skilled trades occupations E	458	13.0	7.7
Personal service occupations F	269	7.6	5.9
Sales & customer service occupations G	227	6.4	6.7
Process; plant & machine operative H	302	8.6	4.9
Elementary occupations J	732	20.7	9.0

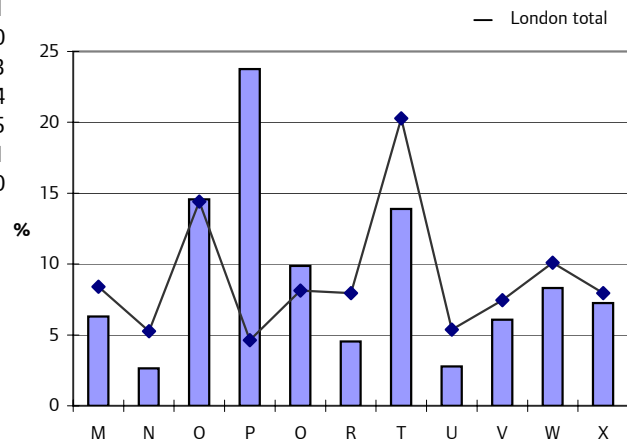
Occupational breakdown



Industry

Industry	Number	%	Total %
Total	3,533	100.0	100.0
Manufacturing & primary# M	223	6.3	8.4
Construction N	93	2.6	5.3
Wholesale & retail trade O	515	14.6	14.4
Hotels & restaurants P	839	23.7	4.6
Transport; storage & communications Q	349	9.9	8.1
Financial intermediation R	160	4.5	8.0
Real estate; renting## T	491	13.9	20.3
Public administration### U	98	2.8	5.4
Education V	215	6.1	7.5
Health & social work W	294	8.3	10.1
Other X	256	7.2	8.0

Industry breakdown



* Owner occupier includes with a mortgage and part rent - part buy
 ** Associate professionals & technical occupations
 *** Administrative & secretarial occupations
 # includes agriculture, fishing, mining and utilities
 ## Real estate; renting & business activities
 ### Public administration & defence; social security

Source: 2001 Census, Commissioned Table SCT021 (C0116)
 © Crown Copyright.

Profile of those Living in London born in: Occupied Territories (Gaza and West Bank)

Demography

By sex	Number	%	Total %
Total	970		
Male	549	56.6	48.4
Female	421	43.4	51.6

By sex and age	0-4	5-15	16-24	25-44	45-59	60-64	65-74	75+	All Ages
Total	11	28	38	235	332	95	149	82	970
Male	8	16	16	161	181	67	68	32	549
Female	3	12	22	74	151	28	81	50	421
Percentage by age group	1.1	2.9	3.9	24.2	34.2	9.8	15.4	8.5	100.0
London total	6.7	13.5	12.1	35.3	16.1	3.9	6.5	5.9	100.0

Living arrangements	Number	%	Total %
Living in a couple	567	60.1	39.9
Not living in a couple	377	39.9	60.1
Lone parent	77	8.2	15.0
Living alone	173	18.4	14.8

Housing and amenities

Accommodation type

House or bungalow	477	48.9	59.6
Flat, maisonette or apartment	460	47.2	38.4
Caravan or other temporary structure	0	0.0	0.1
Households in shared accommodation	10	1.0	0.6
Living in communal establishments	28	2.9	1.3

Tenure

Owner occupier*	543	57.3	58.4
Council rented	79	8.3	16.7
Other social rented	75	7.9	8.8
Private rented	209	22.1	14.4
Living rent free	41	4.3	1.7

Occupancy rating

0 or more	700	74.1	78.7
-1 or less	245	25.9	21.3

Central heating

Accommodation with	889	94.2	94.1
Accommodation without	55	5.8	5.9

People in households with

Access to at least one car	640	67.9	70.9
Without access to car	302	32.1	29.1

Health

General health

Good health	622	64.0	70.8
Fairly good health	234	24.1	20.9
Not good health	116	11.9	8.3

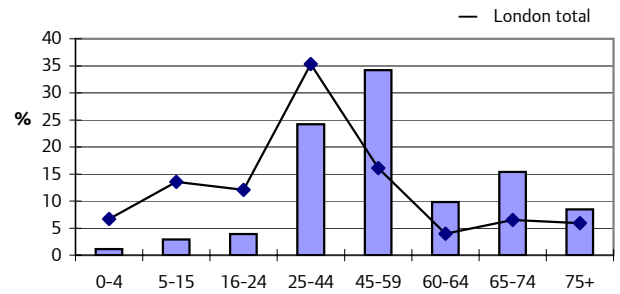
Limiting long term illness (LLTI)

Has a LLTI	231	23.8	15.5
Does not have a LLTI	741	76.2	84.5

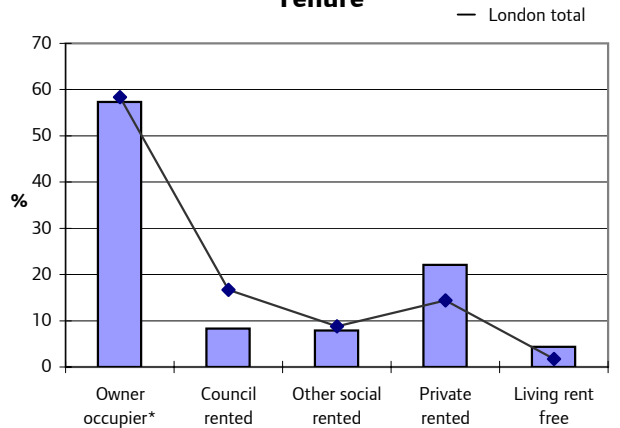
Qualifications (aged 16-74)

No qualifications or level unknown	182	21.4	29.2
Lower level qualifications	196	23.1	39.8
Higher level qualifications	471	55.5	31.0

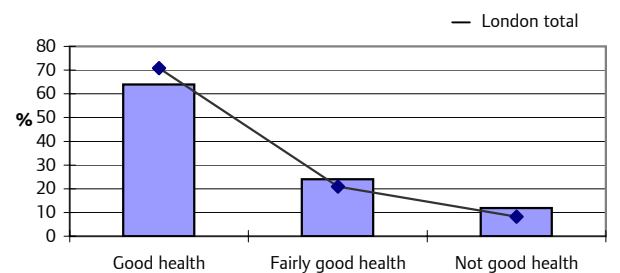
Age structure



Tenure

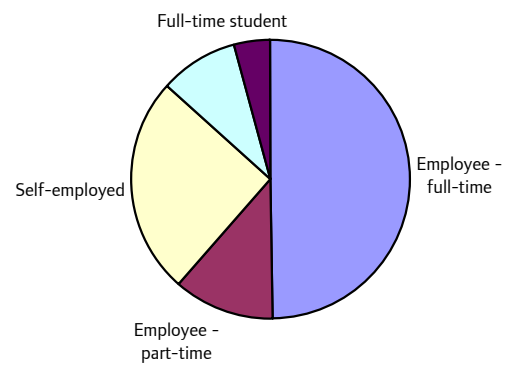


General health

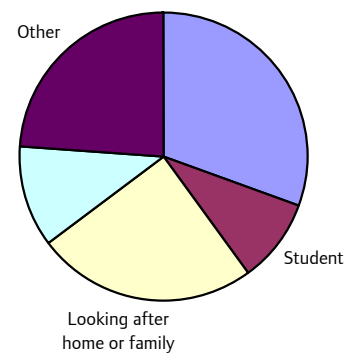


	Number	%	Total %
All persons 16-74	850		
Economically active	414	48.7	67.6
As a % of economically active			
Employee - full-time	206	49.8	63.1
Employee - part-time	48	11.6	12.8
Self-employed	105	25.4	13.3
Unemployed	38	9.2	6.5
Full-time student	17	4.1	4.4
Economically inactive	436	51.3	32.4
As a % of economically inactive			
Retired	133	30.5	30.2
Student	41	9.4	20.2
Looking after home or family	108	24.8	22.1
Permanently sick or disabled	50	11.5	14.1
Other	104	23.9	13.4
Students 16-74	58	6.8	9.5
Employment Rate 16-74		45.3	66.6

Economic activity by type



Economic inactivity by type

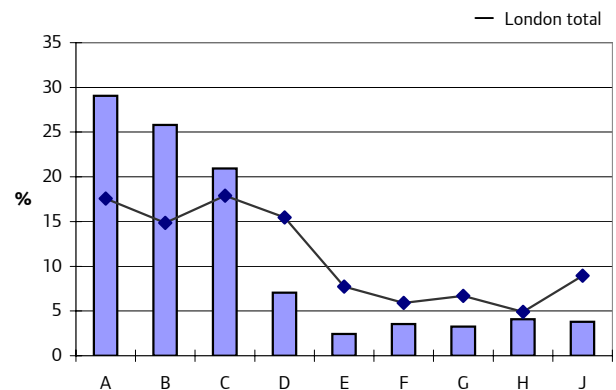


Employment 16-74

Occupation

Occupation	Total	%	Total %
Total	368	100.0	100.0
Managers & senior officials A	107	29.1	17.6
Professional occupations B	95	25.8	14.9
Associate professionals** C	77	20.9	17.9
Administrative *** D	26	7.1	15.5
Skilled trades occupations E	9	2.4	7.7
Personal service occupations F	13	3.5	5.9
Sales & customer service occupations G	12	3.3	6.7
Process; plant & machine operative H	15	4.1	4.9
Elementary occupations J	14	3.8	9.0

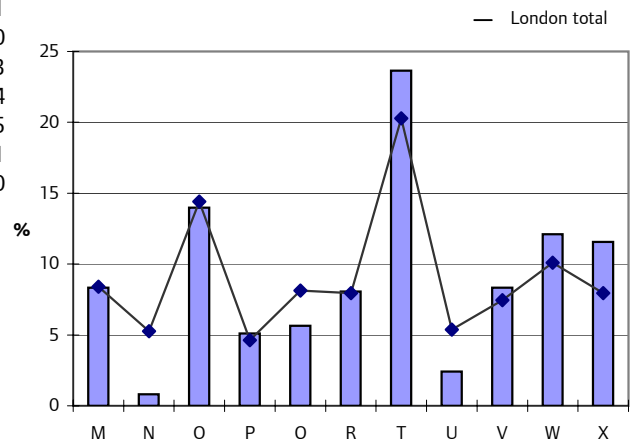
Occupational breakdown



Industry

Industry	Total	%	Total %
Total	372	100.0	100.0
Manufacturing & primary# M	31	8.3	8.4
Construction N	3	0.8	5.3
Wholesale & retail trade O	52	14.0	14.4
Hotels & restaurants P	19	5.1	4.6
Transport; storage & communications Q	21	5.6	8.1
Financial intermediation R	30	8.1	8.0
Real estate; renting## T	88	23.7	20.3
Public administration### U	9	2.4	5.4
Education V	31	8.3	7.5
Health & social work W	45	12.1	10.1
Other X	43	11.6	8.0

Industry breakdown



* Owner occupier includes with a mortgage and part rent - part buy
 ** Associate professionals & technical occupations
 *** Administrative & secretarial occupations
 # includes agriculture, fishing, mining and utilities
 ## Real estate; renting & business activities
 ### Public administration & defence; social security

Profile of those Living in London born in: Oman

Demography

By sex	Number	%	Total %						
Total	241								
Male	138	57.3	48.4						
Female	103	42.7	51.6						
By sex and age	0-4	5-15	16-24	25-44	45-59	60-64	65-74	75+	All Ages
Total	15	63	56	85	16	0	3	3	241
Male	8	36	34	43	11	0	3	3	138
Female	7	27	22	42	5	0	0	0	103
Percentage by age group	6.2	26.1	23.2	35.3	6.6	0.0	1.2	1.2	100.0
London total	6.7	13.5	12.1	35.3	16.1	3.9	6.5	5.9	100.0

Living arrangements	Number	%	Total %
Living in a couple	59	26.2	39.9
Not living in a couple	166	73.8	60.1
Lone parent	20	8.9	15.0
Living alone	23	10.2	14.8

Housing and amenities

Accommodation type

House or bungalow	118	48.8	59.6
Flat, maisonette or apartment	105	43.4	38.4
Caravan or other temporary structure	0	0.0	0.1
Households in shared accommodation	3	1.2	0.6
Living in communal establishments	16	6.6	1.3

Tenure

Owner occupier*	110	50.2	58.4
Council rented	6	2.7	16.7
Other social rented	3	1.4	8.8
Private rented	100	45.7	14.4
Living rent free	0	0.0	1.7

Occupancy rating

0 or more	156	70.3	78.7
-1 or less	66	29.7	21.3

Central heating

Accommodation with	215	94.7	94.1
Accommodation without	12	5.3	5.9

People in households with

Access to at least one car	157	69.8	70.9
Without access to car	68	30.2	29.1

Health

General health

Good health	203	84.9	70.8
Fairly good health	33	13.8	20.9
Not good health	3	1.3	8.3

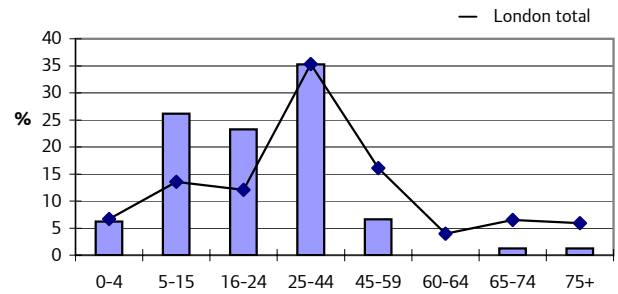
Limiting long term illness (LLTI)

Has a LLTI	10	4.2	15.5
Does not have a LLTI	226	95.8	84.5

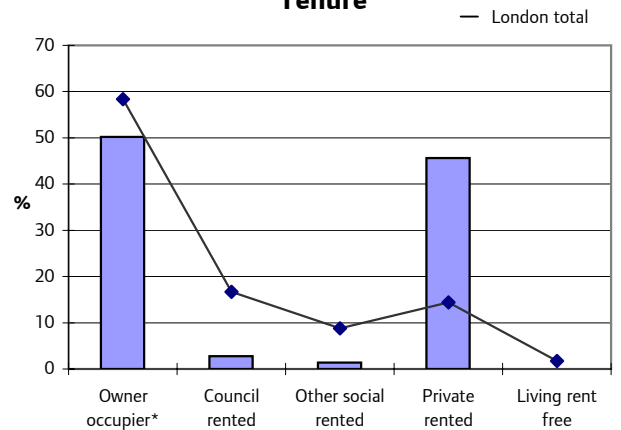
Qualifications (aged 16-74)

No qualifications or level unknown	12	7.5	29.2
Lower level qualifications	49	30.6	39.8
Higher level qualifications	99	61.9	31.0

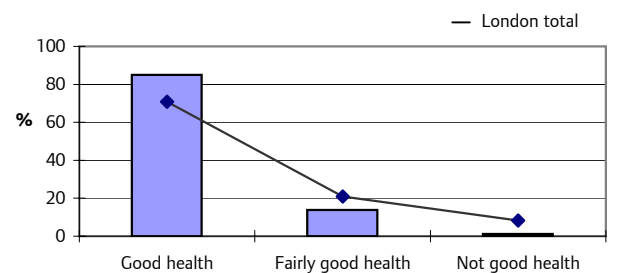
Age structure



Tenure



General health

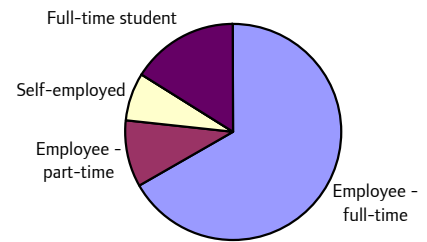


Source: 2001 Census, Commissioned Table SCT021 (C0116)

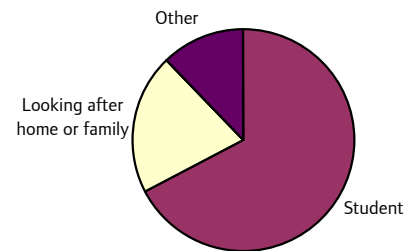
© Crown Copyright.

	Number	%	Total %
All persons 16-74	154		
Economically active	81	52.6	67.6
As a % of economically active			
Employee - full-time	54	66.7	63.1
Employee - part-time	8	9.9	12.8
Self-employed	6	7.4	13.3
Unemployed	0	0.0	6.5
Full-time student	13	16.0	4.4
Economically inactive	73	47.4	32.4
As a % of economically inactive			
Retired	0	0.0	30.2
Student	49	67.1	20.2
Looking after home or family	15	20.5	22.1
Permanently sick or disabled	0	0.0	14.1
Other	9	12.3	13.4
Students 16-74	62	40.3	9.5
Employment Rate 16-74		73.9	66.6

Economic activity by type



Economic inactivity by type

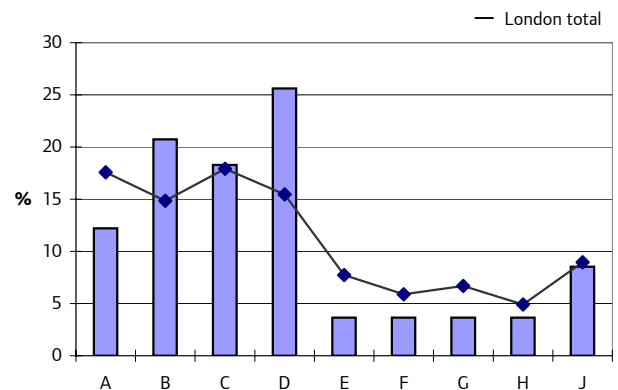


Employment 16-74

Occupation

Occupation	Number	%	Total %
Total	82	100.0	100.0
Managers & senior officials A	10	12.2	17.6
Professional occupations B	17	20.7	14.9
Associate professionals** C	15	18.3	17.9
Administrative *** D	21	25.6	15.5
Skilled trades occupations E	3	3.7	7.7
Personal service occupations F	3	3.7	5.9
Sales & customer service occupations G	3	3.7	6.7
Process; plant & machine operative H	3	3.7	4.9
Elementary occupations J	7	8.5	9.0

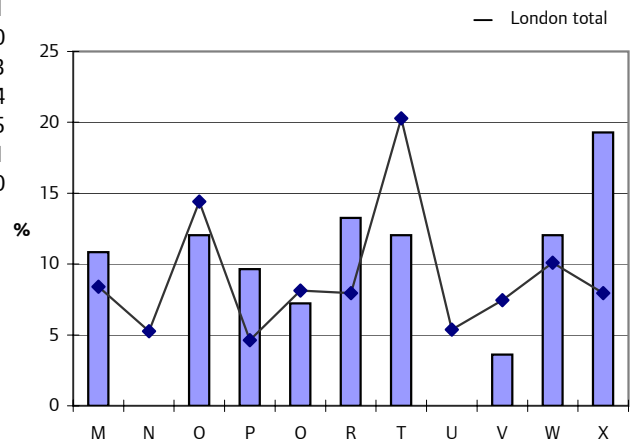
Occupational breakdown



Industry

Industry	Number	%	Total %
Total	83	100.0	100.0
Manufacturing & primary# M	9	10.8	8.4
Construction N	0	0.0	5.3
Wholesale & retail trade O	10	12.0	14.4
Hotels & restaurants P	8	9.6	4.6
Transport; storage & communications Q	6	7.2	8.1
Financial intermediation R	11	13.3	8.0
Real estate; renting## T	10	12.0	20.3
Public administration### U	0	0.0	5.4
Education V	3	3.6	7.5
Health & social work W	10	12.0	10.1
Other X	16	19.3	8.0

Industry breakdown



* Owner occupier includes with a mortgage and part rent - part buy
 ** Associate professionals & technical occupations
 *** Administrative & secretarial occupations
 # includes agriculture, fishing, mining and utilities
 ## Real estate; renting & business activities
 ### Public administration & defence; social security

Profile of those Living in London born in: Qatar

Demography

By sex	Number	%	Total %							
Total	263									
Male	124	47.1	48.4							
Female	139	52.9	51.6							
By sex and age	0-4	5-15	16-24	25-44	45-59	60-64	65-74	75+	All Ages	
Total	11	51	65	126	7	0	0	3	263	
Male	8	29	29	52	3	0	0	3	124	
Female	3	22	36	74	4	0	0	0	139	
Percentage by age group	4.2	19.4	24.7	47.9	2.7	0.0	0.0	1.1	100.0	
London total	6.7	13.5	12.1	35.3	16.1	3.9	6.5	5.9	100.0	

Living arrangements	Number	%	Total %
Living in a couple	80	30.5	39.9
Not living in a couple	182	69.5	60.1
Lone parent	39	15.0	15.0
Living alone	32	12.3	14.8

Housing and amenities

Accommodation type

House or bungalow	131	50.6	59.6
Flat, maisonette or apartment	125	48.3	38.4
Caravan or other temporary structure	0	0.0	0.1
Households in shared accommodation	0	0.0	0.6
Living in communal establishments	3	1.2	1.3

Tenure

Owner occupier*	95	36.5	58.4
Council rented	42	16.2	16.7
Other social rented	18	6.9	8.8
Private rented	82	31.5	14.4
Living rent free	23	8.8	1.7

Occupancy rating

0 or more	148	58.5	78.7
-1 or less	105	41.5	21.3

Central heating

Accommodation with	253	97.3	94.1
Accommodation without	7	2.7	5.9

People in households with

Access to at least one car	161	61.9	70.9
Without access to car	99	38.1	29.1

Health

General health

Good health	216	84.4	70.8
Fairly good health	30	11.7	20.9
Not good health	10	3.9	8.3

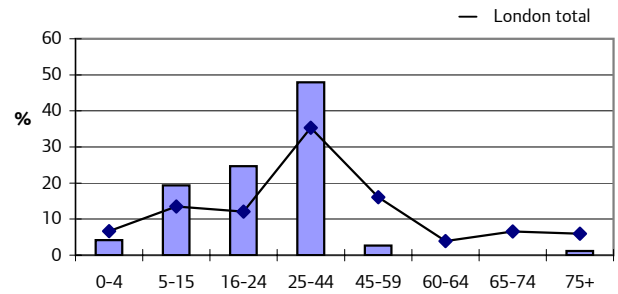
Limiting long term illness (LLTI)

Has a LLTI	24	9.1	15.5
Does not have a LLTI	239	90.9	84.5

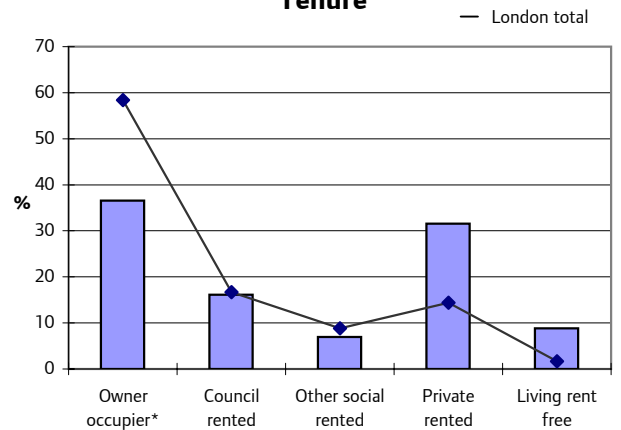
Qualifications (aged 16-74)

No qualifications or level unknown	26	13.1	29.2
Lower level qualifications	91	45.7	39.8
Higher level qualifications	82	41.2	31.0

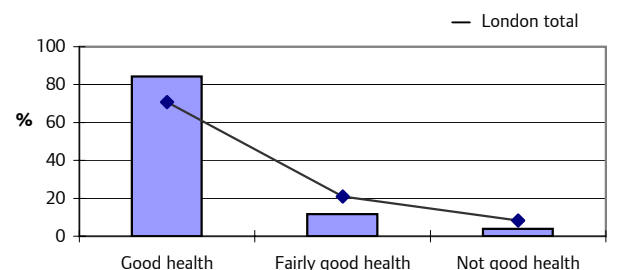
Age structure



Tenure



General health

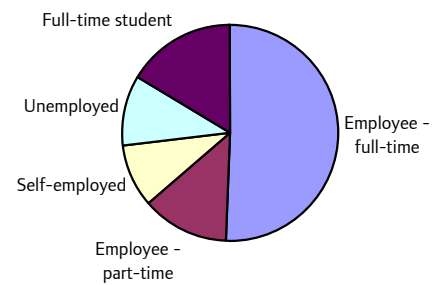


Source: 2001 Census, Commissioned Table SCT021 (C0116)

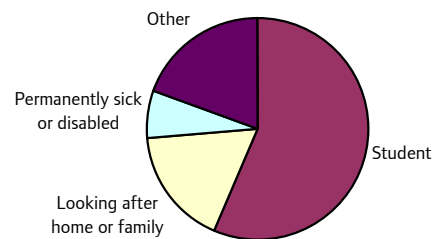
© Crown Copyright.

	Number	%	Total %
All persons 16-74	202		
Economically active	115	56.9	67.6
As a % of economically active			
Employee - full-time	58	50.4	63.1
Employee - part-time	15	13.0	12.8
Self-employed	11	9.6	13.3
Unemployed	12	10.4	6.5
Full-time student	19	16.5	4.4
Economically inactive	87	43.1	32.4
As a % of economically inactive			
Retired	0	0.0	30.2
Student	49	56.3	20.2
Looking after home or family	15	17.2	22.1
Permanently sick or disabled	6	6.9	14.1
Other	17	19.5	13.4
Students 16-74	68	33.7	9.5
Employment Rate 16-74		62.7	66.6

Economic activity by type



Economic inactivity by type

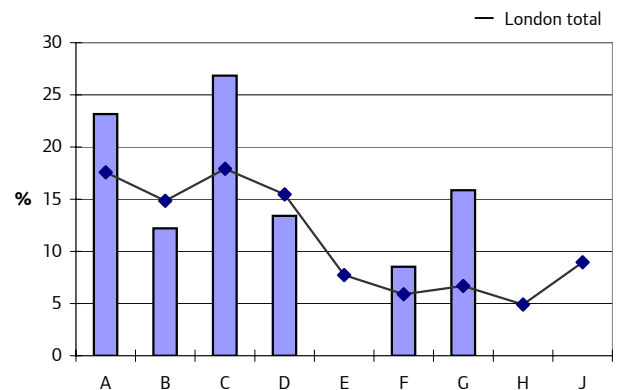


Employment 16-74

Occupation

Occupation	Number	%	Total %
Total	82	100.0	100.0
Managers & senior officials A	19	23.2	17.6
Professional occupations B	10	12.2	14.9
Associate professionals** C	22	26.8	17.9
Administrative *** D	11	13.4	15.5
Skilled trades occupations E	0	0.0	7.7
Personal service occupations F	7	8.5	5.9
Sales & customer service occupations G	13	15.9	6.7
Process; plant & machine operative H	0	0.0	4.9
Elementary occupations J	0	0.0	9.0

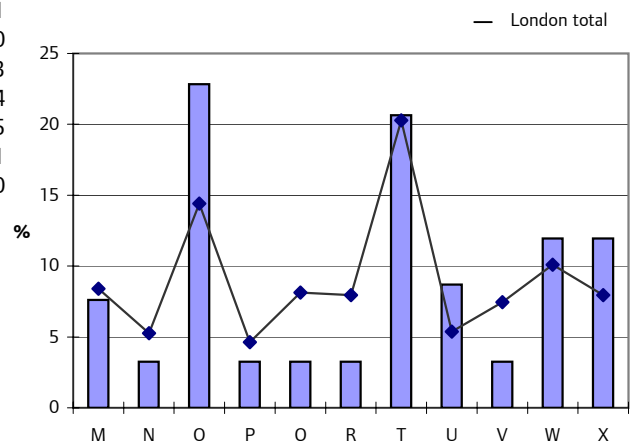
Occupational breakdown



Industry

Industry	Number	%	Total %
Total	92	100.0	100.0
Manufacturing & primary# M	7	7.6	8.4
Construction N	3	3.3	5.3
Wholesale & retail trade O	21	22.8	14.4
Hotels & restaurants P	3	3.3	4.6
Transport; storage & communications Q	3	3.3	8.1
Financial intermediation R	3	3.3	8.0
Real estate; renting## T	19	20.7	20.3
Public administration### U	8	8.7	5.4
Education V	3	3.3	7.5
Health & social work W	11	12.0	10.1
Other X	11	12.0	8.0

Industry breakdown



* Owner occupier includes with a mortgage and part rent - part buy
 ** Associate professionals & technical occupations
 *** Administrative & secretarial occupations
 # includes agriculture, fishing, mining and utilities
 ## Real estate; renting & business activities
 ### Public administration & defence; social security

Profile of those Living in London born in: Saudi Arabia

Demography

By sex	Number	%	Total %
Total	3,011		
Male	1,597	53.0	48.4
Female	1,414	47.0	51.6

By sex and age	0-4	5-15	16-24	25-44	45-59	60-64	65-74	75+	All Ages
Total	189	1,186	796	700	107	9	12	12	3,011
Male	108	601	429	376	65	3	6	9	1,597
Female	81	585	367	324	42	6	6	3	1,414
Percentage by age group	6.3	39.4	26.4	23.2	3.6	0.3	0.4	0.4	100.0
London total	6.7	13.5	12.1	35.3	16.1	3.9	6.5	5.9	100.0

Living arrangements	Number	%	Total %
Living in a couple	571	19.3	39.9
Not living in a couple	2,383	80.7	60.1
Lone parent	692	23.4	15.0
Living alone	141	4.8	14.8

Housing and amenities

Accommodation type

House or bungalow	1,569	52.1	59.6
Flat, maisonette or apartment	1,356	45.0	38.4
Caravan or other temporary structure	0	0.0	0.1
Households in shared accommodation	34	1.1	0.6
Living in communal establishments	53	1.8	1.3

Tenure

Owner occupier*	1,002	33.9	58.4
Council rented	412	14.0	16.7
Other social rented	376	12.7	8.8
Private rented	896	30.4	14.4
Living rent free	266	9.0	1.7

Occupancy rating

0 or more	1,659	56.0	78.7
-1 or less	1,306	44.0	21.3

Central heating

Accommodation with	2,861	96.8	94.1
Accommodation without	95	3.2	5.9

People in households with

Access to at least one car	1,883	63.7	70.9
Without access to car	1,075	36.3	29.1

Health

General health

Good health	2,564	85.2	70.8
Fairly good health	377	12.5	20.9
Not good health	68	2.3	8.3

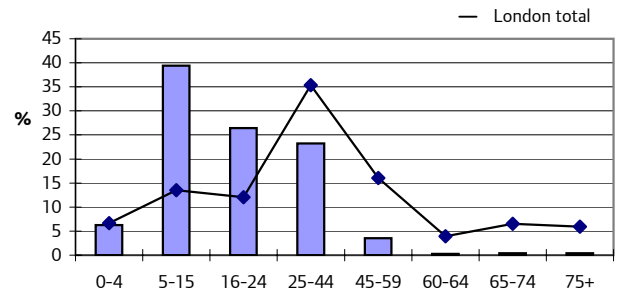
Limiting long term illness (LLTI)

Has a LLTI	173	5.7	15.5
Does not have a LLTI	2,838	94.3	84.5

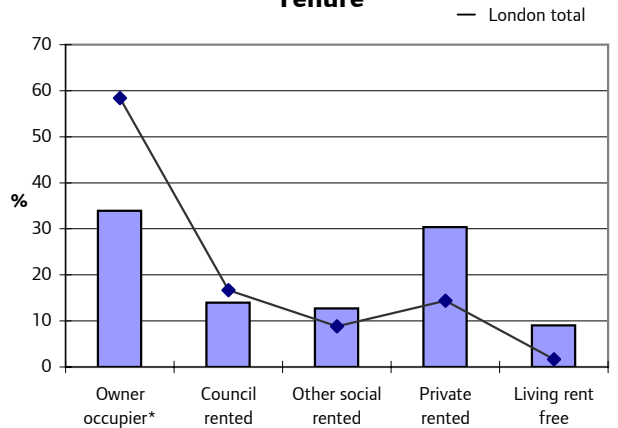
Qualifications (aged 16-74)

No qualifications or level unknown	178	11.0	29.2
Lower level qualifications	792	48.8	39.8
Higher level qualifications	654	40.3	31.0

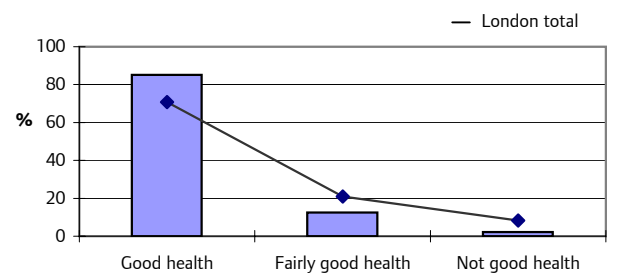
Age structure



Tenure



General health

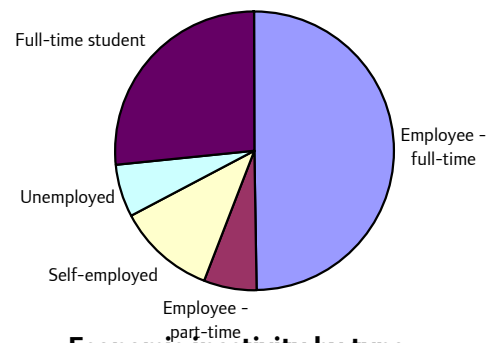


Source: 2001 Census, Commissioned Table SCT021 (C0116)

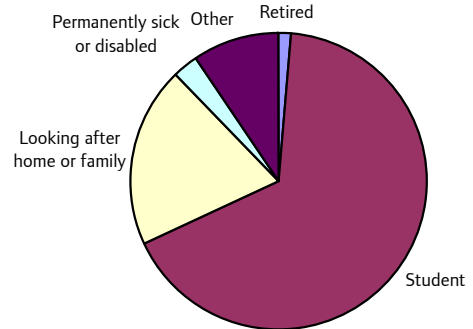
© Crown Copyright.

	Number	%	Total %
All persons 16-74	1,625		
Economically active	684	42.1	67.6
As a % of economically active			
Employee - full-time	340	49.7	63.1
Employee - part-time	42	6.1	12.8
Self-employed	77	11.3	13.3
Unemployed	43	6.3	6.5
Full-time student	182	26.6	4.4
Economically inactive	941	57.9	32.4
As a % of economically inactive			
Retired	13	1.4	30.2
Student	628	66.7	20.2
Looking after home or family	185	19.7	22.1
Permanently sick or disabled	25	2.7	14.1
Other	90	9.6	13.4
Students 16-74	810	49.8	9.5
Employment Rate 16-74		56.3	66.6

Economic activity by type



Economic inactivity by type

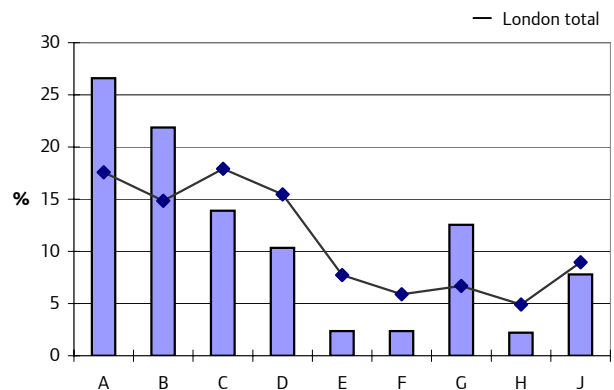


Employment 16-74

Occupation

Occupation	Number	%	Total %
Total	590	100.0	100.0
Managers & senior officials A	157	26.6	17.6
Professional occupations B	129	21.9	14.9
Associate professionals** C	82	13.9	17.9
Administrative *** D	61	10.3	15.5
Skilled trades occupations E	14	2.4	7.7
Personal service occupations F	14	2.4	5.9
Sales & customer service occupations G	74	12.5	6.7
Process; plant & machine operative H	13	2.2	4.9
Elementary occupations J	46	7.8	9.0

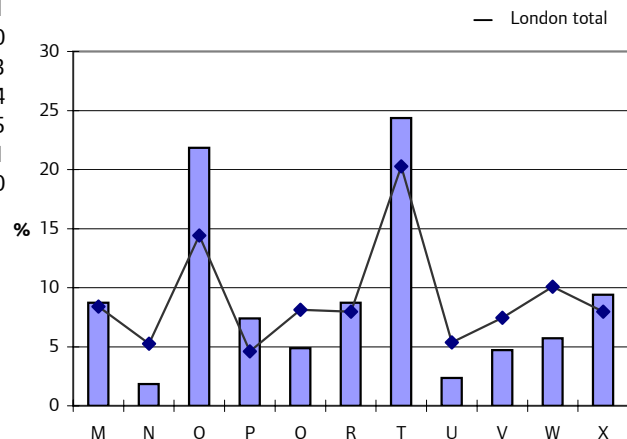
Occupational breakdown



Industry

Industry	Number	%	Total %
Total	595	100.0	100.0
Manufacturing & primary# M	52	8.7	8.4
Construction N	11	1.8	5.3
Wholesale & retail trade O	130	21.8	14.4
Hotels & restaurants P	44	7.4	4.6
Transport; storage & communications Q	29	4.9	8.1
Financial intermediation R	52	8.7	8.0
Real estate; renting## T	145	24.4	20.3
Public administration### U	14	2.4	5.4
Education V	28	4.7	7.5
Health & social work W	34	5.7	10.1
Other X	56	9.4	8.0

Industry breakdown



* Owner occupier includes with a mortgage and part rent - part buy
 ** Associate professionals & technical occupations
 *** Administrative & secretarial occupations
 # includes agriculture, fishing, mining and utilities
 ## Real estate; renting & business activities
 ### Public administration & defence; social security

Profile of those Living in London born in: Somalia

Demography

By sex	Number	%	Total %							
Total	33,831									
Male	14,921	44.1	48.4							
Female	18,910	55.9	51.6							
By sex and age	0-4	5-15	16-24	25-44	45-59	60-64	65-74	75+	All Ages	
Total	2,143	8,733	6,717	12,531	2,079	486	804	338	33,831	
Male	1,184	4,573	3,382	4,343	797	191	316	135	14,921	
Female	959	4,160	3,335	8,188	1,282	295	488	203	18,910	
Percentage by age group	6.3	25.8	19.9	37.0	6.1	1.4	2.4	1.0	100.0	
London total	6.7	13.5	12.1	35.3	16.1	3.9	6.5	5.9	100.0	

Living arrangements	Number	%	Total %
Living in a couple	4,907	14.8	39.9
Not living in a couple	28,146	85.2	60.1
Lone parent	15,747	47.6	15.0
Living alone	2,705	8.2	14.8

Housing and amenities

Accommodation type

House or bungalow	13,496	39.9	59.6
Flat, maisonette or apartment	18,275	54.0	38.4
Caravan or other temporary structure	246	0.7	0.1
Households in shared accommodation	1,039	3.1	0.6
Living in communal establishments	777	2.3	1.3

Tenure

Owner occupier*	2,208	6.7	58.4
Council rented	12,067	36.5	16.7
Other social rented	8,601	26.0	8.8
Private rented	5,862	17.7	14.4
Living rent free	4,318	13.1	1.7

Occupancy rating

0 or more	11,111	33.6	78.7
-1 or less	21,945	66.4	21.3

Central heating

Accommodation with	30,914	93.5	94.1
Accommodation without	2,142	6.5	5.9

People in households with

Access to at least one car	10,293	31.1	70.9
Without access to car	22,761	68.9	29.1

Health

General health

Good health	25,748	76.1	70.8
Fairly good health	5,219	15.4	20.9
Not good health	2,864	8.5	8.3

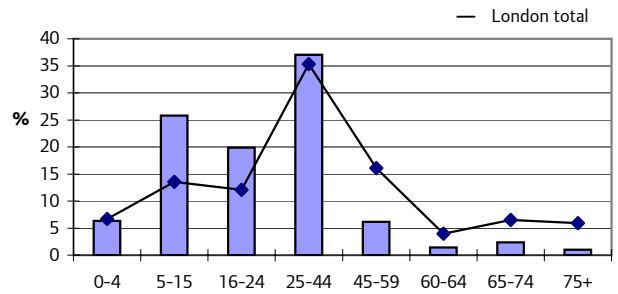
Limiting long term illness (LLTI)

Has a LLTI	4,671	13.8	15.5
Does not have a LLTI	29,160	86.2	84.5

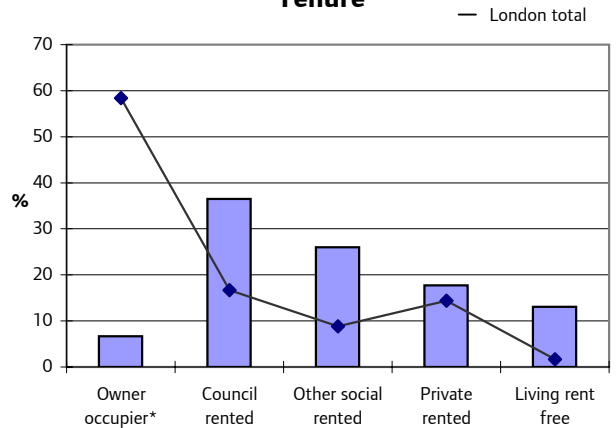
Qualifications (aged 16-74)

No qualifications or level unknown	11,418	50.5	29.2
Lower level qualifications	8,468	37.4	39.8
Higher level qualifications	2,731	12.1	31.0

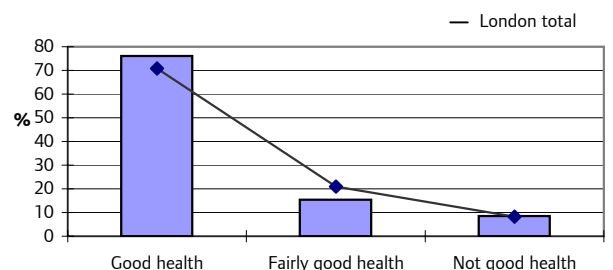
Age structure



Tenure



General health

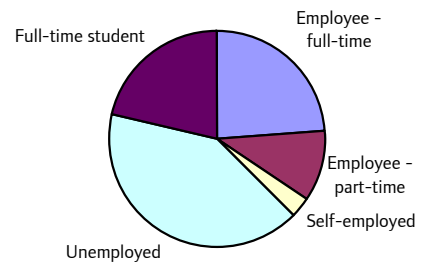


Source: 2001 Census, Commissioned Table SCT021 (C0116)

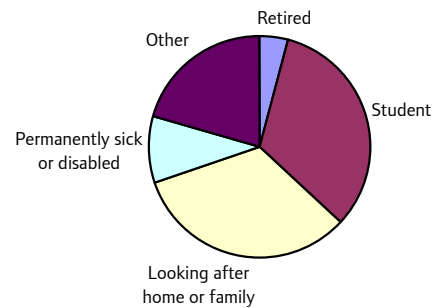
© Crown Copyright.

	Number	%	Total %
All persons 16-74	22,615		
Economically active	6,697	29.6	67.6
As a % of economically active			
Employee - full-time	1,607	24.0	63.1
Employee - part-time	702	10.5	12.8
Self-employed	195	2.9	13.3
Unemployed	2,752	41.1	6.5
Full-time student	1,441	21.5	4.4
Economically inactive	15,918	70.4	32.4
As a % of economically inactive			
Retired	644	4.0	30.2
Student	5,215	32.8	20.2
Looking after home or family	5,255	33.0	22.1
Permanently sick or disabled	1,531	9.6	14.1
Other	3,273	20.6	13.4
Students 16-74	6,656	29.4	9.5
Employment Rate 16-74		15.7	66.6

Economic activity by type



Economic inactivity by type

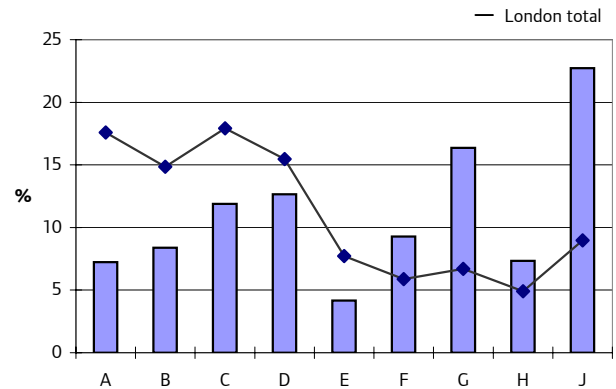


Employment 16-74

Occupation

Occupation	Number	%	Total %
Total	3,028	100.0	100.0
Managers & senior officials A	219	7.2	17.6
Professional occupations B	254	8.4	14.9
Associate professionals** C	360	11.9	17.9
Administrative *** D	383	12.6	15.5
Skilled trades occupations E	126	4.2	7.7
Personal service occupations F	281	9.3	5.9
Sales & customer service occupations G	495	16.3	6.7
Process; plant & machine operative H	222	7.3	4.9
Elementary occupations J	688	22.7	9.0

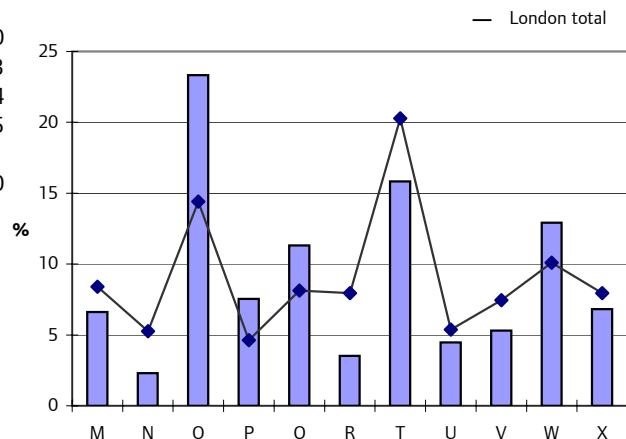
Occupational breakdown



Industry

Industry	Number	%	Total %
Total	3,034	100.0	100.0
Manufacturing & primary# M	201	6.6	8.4
Construction N	70	2.3	5.3
Wholesale & retail trade O	708	23.3	14.4
Hotels & restaurants P	229	7.5	4.6
Transport; storage & communications Q	343	11.3	8.1
Financial intermediation R	107	3.5	8.0
Real estate; renting## T	480	15.8	20.3
Public administration### U	136	4.5	5.4
Education V	161	5.3	7.5
Health & social work W	392	12.9	10.1
Other X	207	6.8	8.0

Industry breakdown



* Owner occupier includes with a mortgage and part rent - part buy
 ** Associate professionals & technical occupations
 *** Administrative & secretarial occupations
 # includes agriculture, fishing, mining and utilities
 ## Real estate; renting & business activities
 ### Public administration & defence; social security

Profile of those Living in London born in: Sudan

Demography

By sex	Number	%	Total %
Total	5,473		
Male	2,888	52.8	48.4
Female	2,585	47.2	51.6

By sex and age	0-4	5-15	16-24	25-44	45-59	60-64	65-74	75+	All Ages
Total	120	847	805	2,524	863	106	151	57	5,473
Male	67	432	400	1,302	511	61	85	30	2,888
Female	53	415	405	1,222	352	45	66	27	2,585
Percentage by age group	2.2	15.5	14.7	46.1	15.8	1.9	2.8	1.0	100.0
London total	6.7	13.5	12.1	35.3	16.1	3.9	6.5	5.9	100.0

Living arrangements	Number	%	Total %
Living in a couple	2,135	40.0	39.9
Not living in a couple	3,197	60.0	60.1
Lone parent	1,055	19.8	15.0
Living alone	660	12.4	14.8

Housing and amenities

Accommodation type

House or bungalow	2,078	38.0	59.6
Flat, maisonette or apartment	3,119	57.0	38.4
Caravan or other temporary structure	19	0.3	0.1
Households in shared accommodation	112	2.0	0.6
Living in communal establishments	140	2.6	1.3

Tenure

Owner occupier*	1,406	26.4	58.4
Council rented	1,269	23.8	16.7
Other social rented	1,193	22.4	8.8
Private rented	1,084	20.3	14.4
Living rent free	378	7.1	1.7

Occupancy rating

0 or more	2,500	46.9	78.7
-1 or less	2,830	53.1	21.3

Central heating

Accommodation with	5,038	94.5	94.1
Accommodation without	292	5.5	5.9

People in households with

Access to at least one car	3,091	58.0	70.9
Without access to car	2,242	42.0	29.1

Health

General health

Good health	3,903	71.3	70.8
Fairly good health	1,056	19.3	20.9
Not good health	513	9.4	8.3

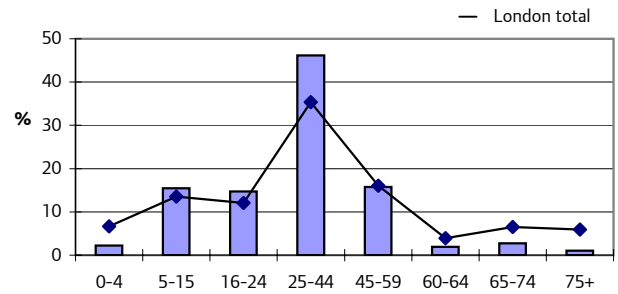
Limiting long term illness (LLTI)

Has a LLTI	904	16.5	15.5
Does not have a LLTI	4,569	83.5	84.5

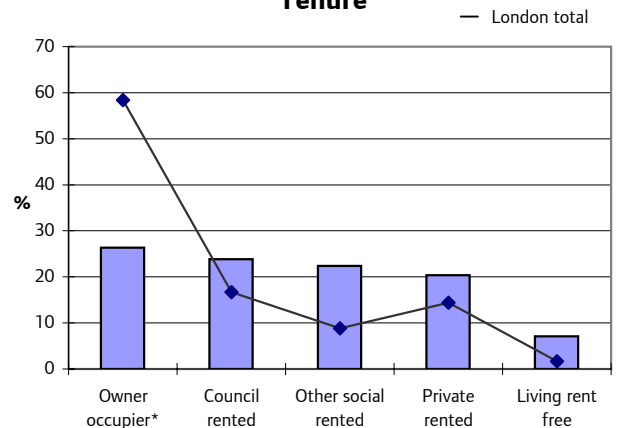
Qualifications (aged 16-74)

No qualifications or level unknown	801	18.0	29.2
Lower level qualifications	1,628	36.6	39.8
Higher level qualifications	2,020	45.4	31.0

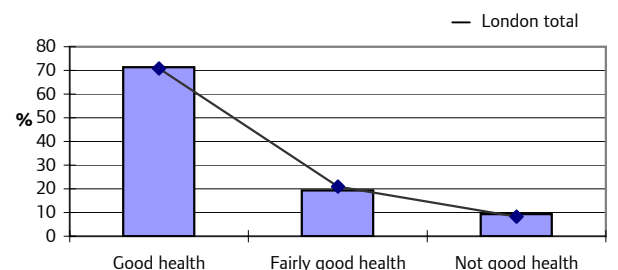
Age structure



Tenure

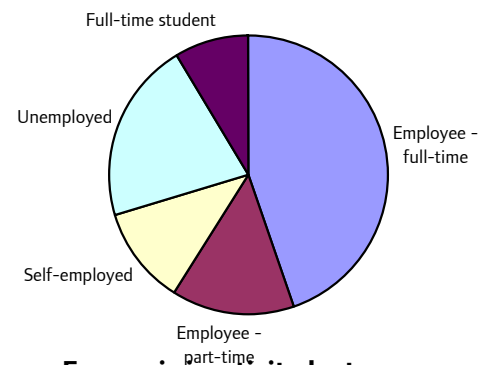


General health

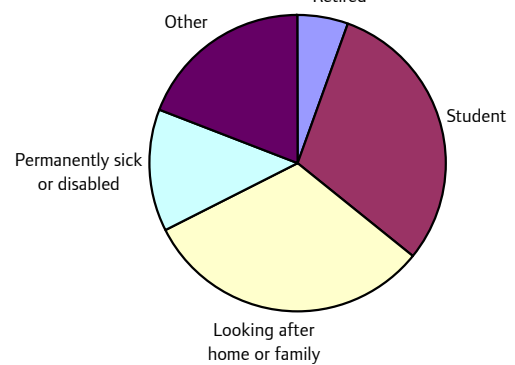


	Number	%	Total %
All persons 16-74	4,444		
Economically active	2,281	51.3	67.6
As a % of economically active			
Employee - full-time	1,020	44.7	63.1
Employee - part-time	325	14.2	12.8
Self-employed	258	11.3	13.3
Unemployed	484	21.2	6.5
Full-time student	194	8.5	4.4
Economically inactive	2,163	48.7	32.4
As a % of economically inactive			
Retired	123	5.7	30.2
Student	651	30.1	20.2
Looking after home or family	684	31.6	22.1
Permanently sick or disabled	291	13.5	14.1
Other	414	19.1	13.4
Students 16-74	845	19.0	9.5
Employment Rate 16-74		44.5	66.6

Economic activity by type



Economic inactivity by type

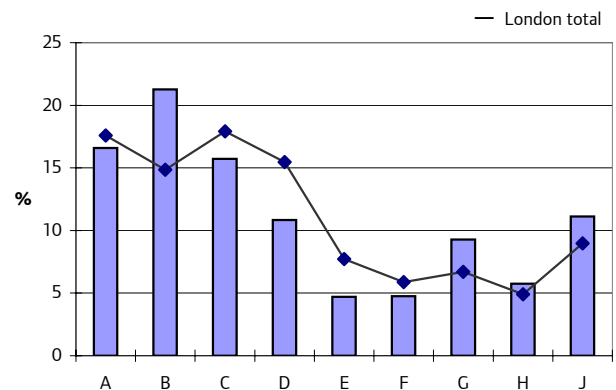


Employment 16-74

Occupation

Occupation	Number	%	Total %
Total	1,725	100.0	100.0
Managers & senior officials A	286	16.6	17.6
Professional occupations B	367	21.3	14.9
Associate professionals** C	271	15.7	17.9
Administrative *** D	187	10.8	15.5
Skilled trades occupations E	81	4.7	7.7
Personal service occupations F	82	4.8	5.9
Sales & customer service occupations G	160	9.3	6.7
Process; plant & machine operative H	99	5.7	4.9
Elementary occupations J	192	11.1	9.0

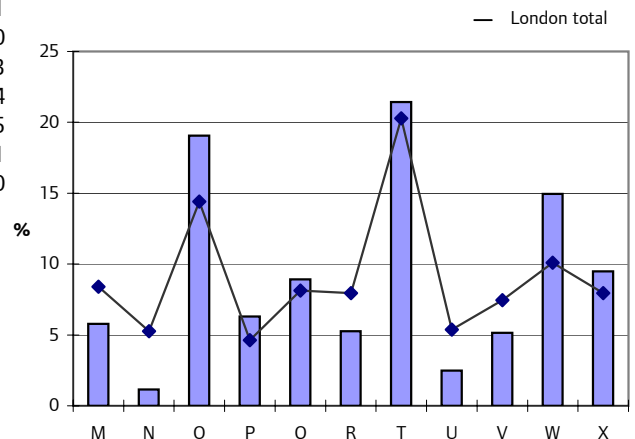
Occupational breakdown



Industry

Industry	Number	%	Total %
Total	1,727	100.0	100.0
Manufacturing & primary# M	100	5.8	8.4
Construction N	20	1.2	5.3
Wholesale & retail trade O	329	19.1	14.4
Hotels & restaurants P	109	6.3	4.6
Transport; storage & communications Q	154	8.9	8.1
Financial intermediation R	91	5.3	8.0
Real estate; renting## T	370	21.4	20.3
Public administration### U	43	2.5	5.4
Education V	89	5.2	7.5
Health & social work W	258	14.9	10.1
Other X	164	9.5	8.0

Industry breakdown



* Owner occupier includes with a mortgage and part rent - part buy
 ** Associate professionals & technical occupations
 *** Administrative & secretarial occupations
 # includes agriculture, fishing, mining and utilities
 ## Real estate; renting & business activities
 ### Public administration & defence; social security

Profile of those Living in London born in: Syrian Arab Republic

Demography

By sex	Number	%	Total %							
Total	2,066									
Male	1,155	55.9	48.4							
Female	911	44.1	51.6							
By sex and age	0-4	5-15	16-24	25-44	45-59	60-64	65-74	75+	All Ages	
Total	40	189	267	879	487	85	78	41	2,066	
Male	22	95	130	509	297	49	36	17	1,155	
Female	18	94	137	370	190	36	42	24	911	
Percentage by age group	1.9	9.1	12.9	42.5	23.6	4.1	3.8	2.0	100.0	
London total	6.7	13.5	12.1	35.3	16.1	3.9	6.5	5.9	100.0	

Living arrangements	Number	%	Total %
Living in a couple	1,087	53.6	39.9
Not living in a couple	940	46.4	60.1
Lone parent	215	10.6	15.0
Living alone	221	10.9	14.8

Housing and amenities

Accommodation type

House or bungalow	975	47.2	59.6
Flat, maisonette or apartment	1,016	49.2	38.4
Caravan or other temporary structure	0	0.0	0.1
Households in shared accommodation	38	1.8	0.6
Living in communal establishments	38	1.8	1.3

Tenure

Owner occupier*	964	47.4	58.4
Council rented	289	14.2	16.7
Other social rented	194	9.5	8.8
Private rented	493	24.2	14.4
Living rent free	95	4.7	1.7

Occupancy rating

0 or more	1,268	62.5	78.7
-1 or less	761	37.5	21.3

Central heating

Accommodation with	1,926	95.0	94.1
Accommodation without	101	5.0	5.9

People in households with

Access to at least one car	1,454	71.7	70.9
Without access to car	574	28.3	29.1

Health

General health

Good health	1,371	66.3	70.8
Fairly good health	510	24.7	20.9
Not good health	187	9.0	8.3

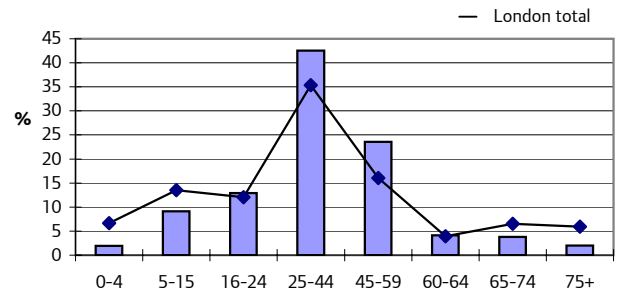
Limiting long term illness (LLTI)

Has a LLTI	323	15.6	15.5
Does not have a LLTI	1,744	84.4	84.5

Qualifications (aged 16-74)

No qualifications or level unknown	401	22.3	29.2
Lower level qualifications	598	33.3	39.8
Higher level qualifications	797	44.4	31.0

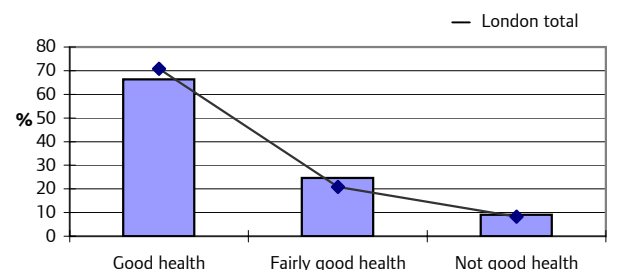
Age structure



Tenure

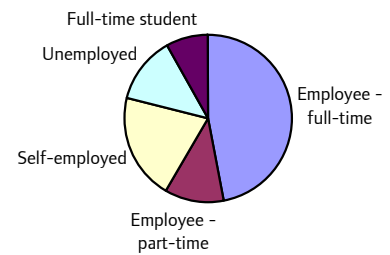


General health

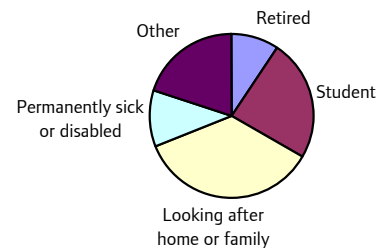


	Number	%	Total %
All persons 16-74	1,797		
Economically active	945	52.6	67.6
As a % of economically active			
Employee - full-time	443	46.9	63.1
Employee - part-time	109	11.5	12.8
Self-employed	194	20.5	13.3
Unemployed	122	12.9	6.5
Full-time student	77	8.1	4.4
Economically inactive	852	47.4	32.4
As a % of economically inactive			
Retired	81	9.5	30.2
Student	202	23.7	20.2
Looking after home or family	303	35.6	22.1
Permanently sick or disabled	95	11.2	14.1
Other	171	20.1	13.4
Students 16-74	279	15.5	9.5
Employment Rate 16-74		49.1	66.6

Economic activity by type



Economic inactivity by type

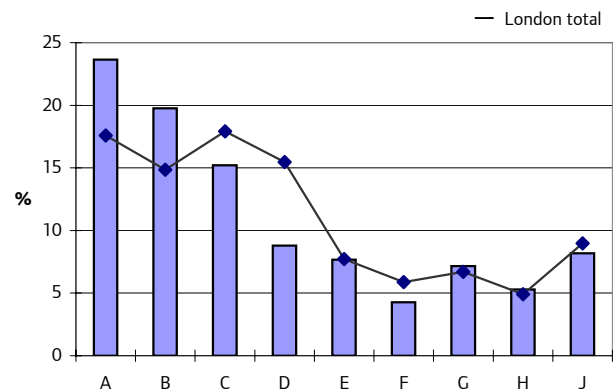


Employment 16-74

Occupation

Occupation	Number	%	Total %
Total	795	100.0	100.0
Managers & senior officials A	188	23.6	17.6
Professional occupations B	157	19.7	14.9
Associate professionals** C	121	15.2	17.9
Administrative *** D	70	8.8	15.5
Skilled trades occupations E	61	7.7	7.7
Personal service occupations F	34	4.3	5.9
Sales & customer service occupations G	57	7.2	6.7
Process; plant & machine operative H	42	5.3	4.9
Elementary occupations J	65	8.2	9.0

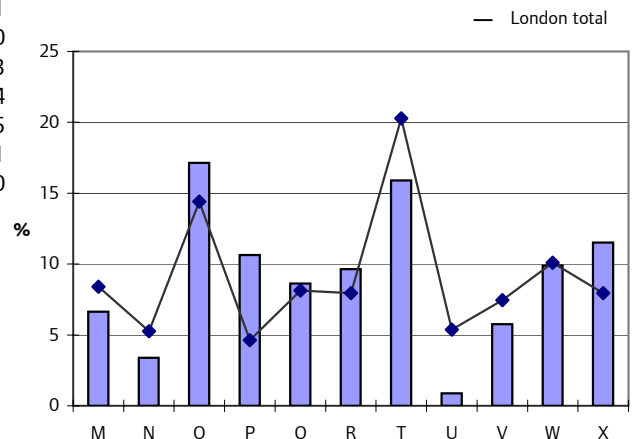
Occupational breakdown



Industry

Industry	Number	%	Total %
Total	799	100.0	100.0
Manufacturing & primary# M	53	6.6	8.4
Construction N	27	3.4	5.3
Wholesale & retail trade O	137	17.1	14.4
Hotels & restaurants P	85	10.6	4.6
Transport; storage & communications Q	69	8.6	8.1
Financial intermediation R	77	9.6	8.0
Real estate; renting## T	127	15.9	20.3
Public administration### U	7	0.9	5.4
Education V	46	5.8	7.5
Health & social work W	79	9.9	10.1
Other X	92	11.5	8.0

Industry breakdown



* Owner occupier includes with a mortgage and part rent - part buy
 ** Associate professionals & technical occupations
 *** Administrative & secretarial occupations
 # includes agriculture, fishing, mining and utilities
 ## Real estate; renting & business activities
 ### Public administration & defence; social security

Profile of those Living in London born in: Tunisia

Demography

By sex	Number	%	Total %
Total	1,395		
Male	778	55.8	48.4
Female	617	44.2	51.6

By sex and age	0-4	5-15	16-24	25-44	45-59	60-64	65-74	75+	All Ages
Total	17	43	55	585	431	68	126	70	1,395
Male	8	19	25	364	240	33	65	24	778
Female	9	24	30	221	191	35	61	46	617
Percentage by age group	1.2	3.1	3.9	41.9	30.9	4.9	9.0	5.0	100.0
London total	6.7	13.5	12.1	35.3	16.1	3.9	6.5	5.9	100.0

Living arrangements	Number	%	Total %
Living in a couple	861	62.7	39.9
Not living in a couple	512	37.3	60.1
Lone parent	97	7.0	15.0
Living alone	246	17.8	14.8

Housing and amenities

Accommodation type

House or bungalow	732	52.5	59.6
Flat, maisonette or apartment	634	45.5	38.4
Caravan or other temporary structure	0	0.0	0.1
Households in shared accommodation	14	1.0	0.6
Living in communal establishments	14	1.0	1.3

Tenure

Owner occupier*	746	53.9	58.4
Council rented	182	13.2	16.7
Other social rented	134	9.7	8.8
Private rented	287	20.8	14.4
Living rent free	34	2.5	1.7

Occupancy rating

0 or more	1,046	75.7	78.7
-1 or less	336	24.3	21.3

Central heating

Accommodation with	1,295	93.8	94.1
Accommodation without	85	6.2	5.9

People in households with

Access to at least one car	896	64.9	70.9
Without access to car	485	35.1	29.1

Health

General health

Good health	849	60.7	70.8
Fairly good health	362	25.9	20.9
Not good health	187	13.4	8.3

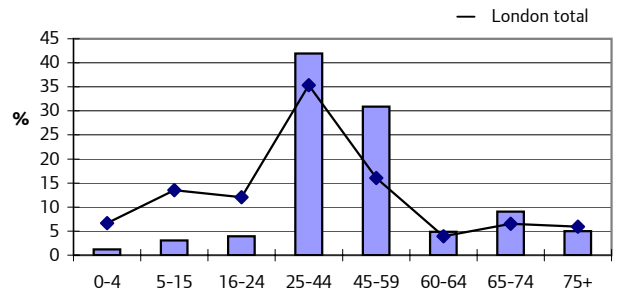
Limiting long term illness (LLTI)

Has a LLTI	287	20.5	15.5
Does not have a LLTI	1,110	79.5	84.5

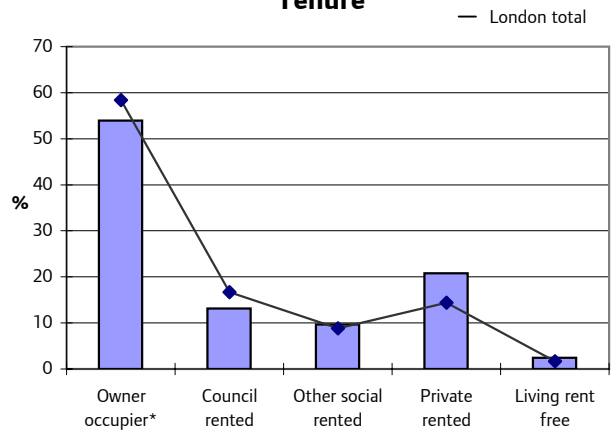
Qualifications (aged 16-74)

No qualifications or level unknown	566	44.7	29.2
Lower level qualifications	343	27.1	39.8
Higher level qualifications	356	28.1	31.0

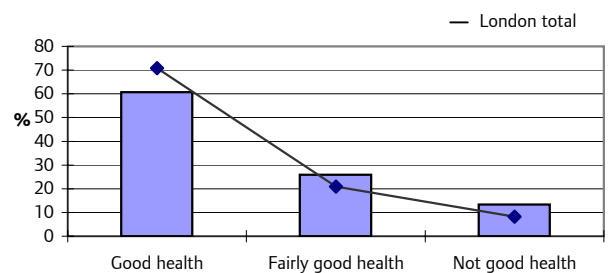
Age structure



Tenure



General health

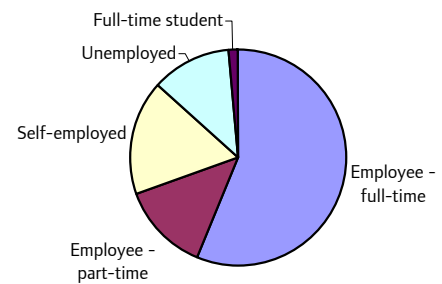


Source: 2001 Census, Commissioned Table SCT021 (C0116)

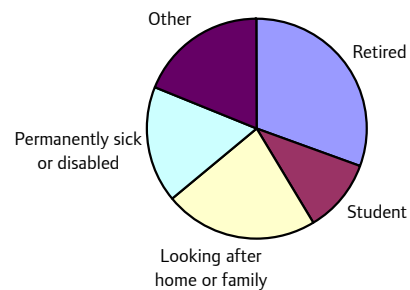
© Crown Copyright.

	Number	%	Total %
All persons 16-74	1,264		
Economically active	801	63.4	67.6
As a % of economically active			
Employee - full-time	449	56.1	63.1
Employee - part-time	107	13.4	12.8
Self-employed	139	17.4	13.3
Unemployed	95	11.9	6.5
Full-time student	11	1.4	4.4
Economically inactive	463	36.6	32.4
As a % of economically inactive			
Retired	142	30.7	30.2
Student	49	10.6	20.2
Looking after home or family	105	22.7	22.1
Permanently sick or disabled	79	17.1	14.1
Other	88	19.0	13.4
Students 16-74	60	4.7	9.5
Employment Rate 16-74		57.7	66.6

Economic activity by type



Economic inactivity by type



Employment 16-74

Occupation

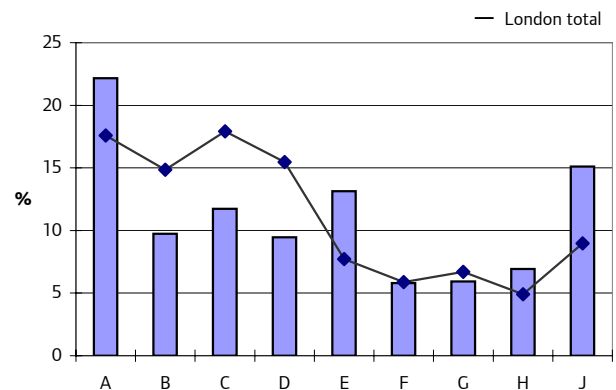
Occupation	Number	%	Total %
Total	708	100.0	100.0
Managers & senior officials A	157	22.2	17.6
Professional occupations B	69	9.7	14.9
Associate professionals** C	83	11.7	17.9
Administrative *** D	67	9.5	15.5
Skilled trades occupations E	93	13.1	7.7
Personal service occupations F	41	5.8	5.9
Sales & customer service occupations G	42	5.9	6.7
Process; plant & machine operative H	49	6.9	4.9
Elementary occupations J	107	15.1	9.0

Industry

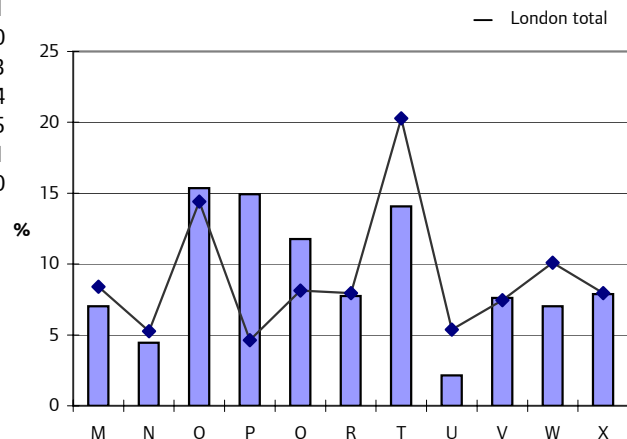
Industry	Number	%	Total %
Total	697	100.0	100.0
Manufacturing & primary# M	49	7.0	8.4
Construction N	31	4.4	5.3
Wholesale & retail trade O	107	15.4	14.4
Hotels & restaurants P	104	14.9	4.6
Transport; storage & communications Q	82	11.8	8.1
Financial intermediation R	54	7.7	8.0
Real estate; renting## T	98	14.1	20.3
Public administration### U	15	2.2	5.4
Education V	53	7.6	7.5
Health & social work W	49	7.0	10.1
Other X	55	7.9	8.0

* Owner occupier includes with a mortgage and part rent - part buy
 ** Associate professionals & technical occupations
 *** Administrative & secretarial occupations
 # includes agriculture, fishing, mining and utilities
 ## Real estate; renting & business activities
 ### Public administration & defence; social security

Occupational breakdown



Industry breakdown



Profile of those Living in London born in: United Arab Emirates

Demography

By sex	Number	%	Total %							
Total	1,314									
Male	636	48.4	48.4							
Female	678	51.6	51.6							
By sex and age	0-4	5-15	16-24	25-44	45-59	60-64	65-74	75+	All Ages	
Total	82	321	655	231	19	6	0	0	1,314	
Male	51	156	330	88	8	3	0	0	636	
Female	31	165	325	143	11	3	0	0	678	
Percentage by age group	6.2	24.4	49.8	17.6	1.4	0.5	0.0	0.0	100.0	
London total	6.7	13.5	12.1	35.3	16.1	3.9	6.5	5.9	100.0	

Living arrangements	Number	%	Total %
Living in a couple	180	14.0	39.9
Not living in a couple	1,103	86.0	60.1
Lone parent	216	16.9	15.0
Living alone	64	5.0	14.8

Housing and amenities

Accommodation type

House or bungalow	730	55.1	59.6
Flat, maisonette or apartment	549	41.4	38.4
Caravan or other temporary structure	3	0.2	0.1
Households in shared accommodation	7	0.5	0.6
Living in communal establishments	36	2.7	1.3

Tenure

Owner occupier*	577	45.0	58.4
Council rented	120	9.4	16.7
Other social rented	101	7.9	8.8
Private rented	426	33.2	14.4
Living rent free	59	4.6	1.7

Occupancy rating

0 or more	812	63.5	78.7
-1 or less	467	36.5	21.3

Central heating

Accommodation with	1,231	96.1	94.1
Accommodation without	50	3.9	5.9

People in households with

Access to at least one car	891	69.7	70.9
Without access to car	387	30.3	29.1

Health

General health

Good health	1,072	81.5	70.8
Fairly good health	221	16.8	20.9
Not good health	22	1.7	8.3

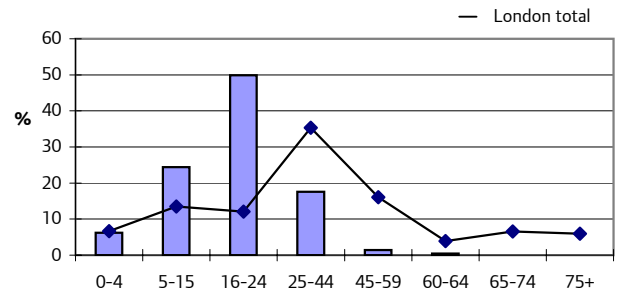
Limiting long term illness (LLTI)

Has a LLTI	52	4.0	15.5
Does not have a LLTI	1,262	96.0	84.5

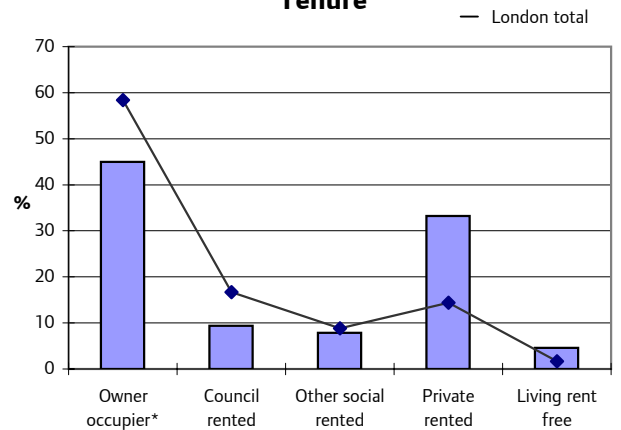
Qualifications (aged 16-74)

No qualifications or level unknown	61	6.7	29.2
Lower level qualifications	509	55.7	39.8
Higher level qualifications	344	37.6	31.0

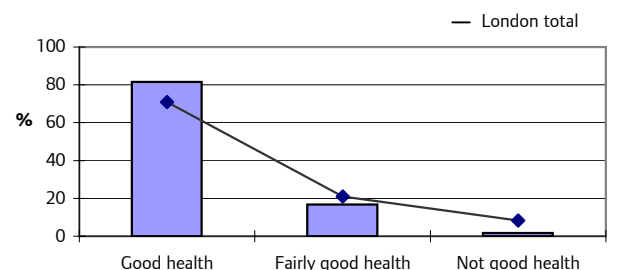
Age structure



Tenure



General health

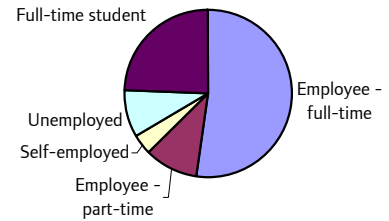


Source: 2001 Census, Commissioned Table SCT021 (C0116)

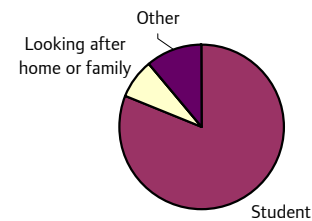
© Crown Copyright.

	Number	%	Total %
All persons 16-74	906		
Economically active	484	53.4	67.6
As a % of economically active			
Employee - full-time	253	52.3	63.1
Employee - part-time	50	10.3	12.8
Self-employed	18	3.7	13.3
Unemployed	45	9.3	6.5
Full-time student	118	24.4	4.4
Economically inactive	422	46.6	32.4
As a % of economically inactive			
Retired	0	0.0	30.2
Student	342	81.0	20.2
Looking after home or family	33	7.8	22.1
Permanently sick or disabled	0	0.0	14.1
Other	47	11.1	13.4
Students 16-74	460	50.8	9.5
Employment Rate 16-74		72.0	66.6

Economic activity by type



Economic inactivity by type



Employment 16-74

Occupation

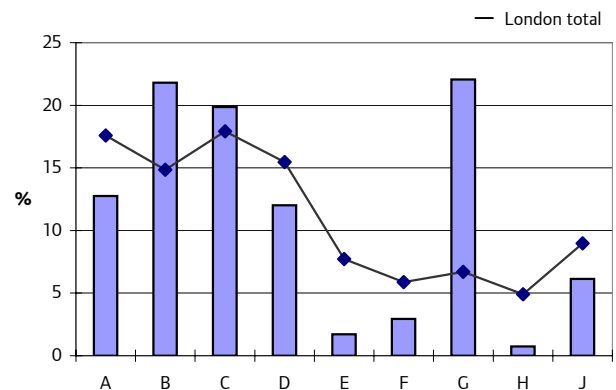
Occupation	Number	%	Total %
Total	408	100.0	100.0
Managers & senior officials A	52	12.7	17.6
Professional occupations B	89	21.8	14.9
Associate professionals** C	81	19.9	17.9
Administrative *** D	49	12.0	15.5
Skilled trades occupations E	7	1.7	7.7
Personal service occupations F	12	2.9	5.9
Sales & customer service occupations G	90	22.1	6.7
Process; plant & machine operative H	3	0.7	4.9
Elementary occupations J	25	6.1	9.0

Industry

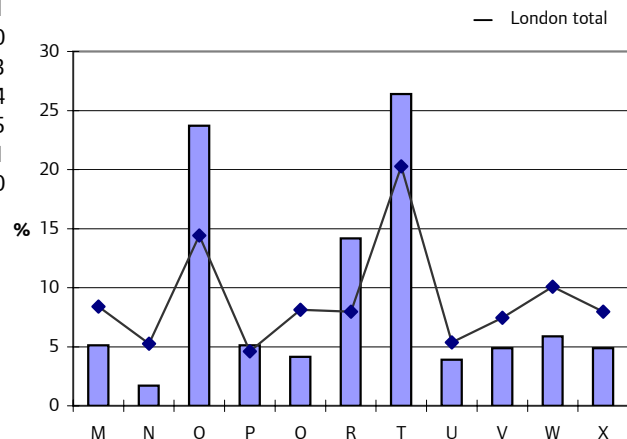
Industry	Number	%	Total %
Total	409	100.0	100.0
Manufacturing & primary# M	21	5.1	8.4
Construction N	7	1.7	5.3
Wholesale & retail trade O	97	23.7	14.4
Hotels & restaurants P	21	5.1	4.6
Transport; storage & communications Q	17	4.2	8.1
Financial intermediation R	58	14.2	8.0
Real estate; renting## T	108	26.4	20.3
Public administration### U	16	3.9	5.4
Education V	20	4.9	7.5
Health & social work W	24	5.9	10.1
Other X	20	4.9	8.0

* Owner occupier includes with a mortgage and part rent - part buy
 ** Associate professionals & technical occupations
 *** Administrative & secretarial occupations
 # includes agriculture, fishing, mining and utilities
 ## Real estate; renting & business activities
 ### Public administration & defence; social security

Occupational breakdown



Industry breakdown



Profile of those Living in London born in: Yemen

Demography

By sex	Number	%	Total %							
Total	3,671									
Male	2,228	60.7	48.4							
Female	1,443	39.3	51.6							
By sex and age	0-4	5-15	16-24	25-44	45-59	60-64	65-74	75+	All Ages	
Total	28	177	154	1,690	1,009	204	300	109	3,671	
Male	11	96	93	1,003	628	135	197	65	2,228	
Female	17	81	61	687	381	69	103	44	1,443	
Percentage by age group	0.8	4.8	4.2	46.0	27.5	5.6	8.2	3.0	100.0	
London total	6.7	13.5	12.1	35.3	16.1	3.9	6.5	5.9	100.0	

Living arrangements	Number	%	Total %
Living in a couple	2,308	63.1	39.9
Not living in a couple	1,351	36.9	60.1
Lone parent	368	10.1	15.0
Living alone	386	10.6	14.8

Housing and amenities

Accommodation type

House or bungalow	2,245	61.0	59.6
Flat, maisonette or apartment	1,372	37.3	38.4
Caravan or other temporary structure	3	0.1	0.1
Households in shared accommodation	35	1.0	0.6
Living in communal establishments	25	0.7	1.3

Tenure

Owner occupier*	2,146	58.8	58.4
Council rented	577	15.8	16.7
Other social rented	364	10.0	8.8
Private rented	467	12.8	14.4
Living rent free	98	2.7	1.7

Occupancy rating

0 or more	2,390	65.5	78.7
-1 or less	1,260	34.5	21.3

Central heating

Accommodation with	3,522	96.4	94.1
Accommodation without	130	3.6	5.9

People in households with

Access to at least one car	2,697	74.0	70.9
Without access to car	949	26.0	29.1

Health

General health

Good health	2,339	63.7	70.8
Fairly good health	939	25.6	20.9
Not good health	392	10.7	8.3

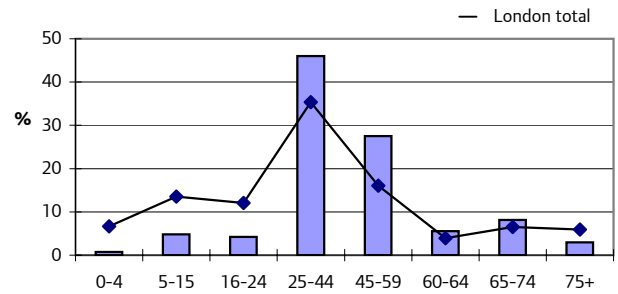
Limiting long term illness (LLTI)

Has a LLTI	762	20.8	15.5
Does not have a LLTI	2,908	79.2	84.5

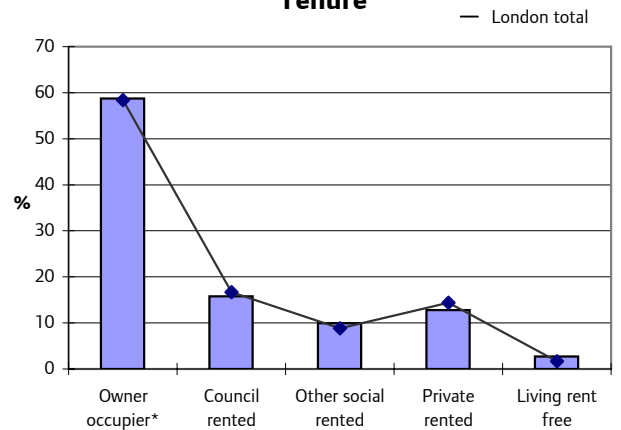
Qualifications (aged 16-74)

No qualifications or level unknown	1,174	35.0	29.2
Lower level qualifications	1,154	34.4	39.8
Higher level qualifications	1,029	30.7	31.0

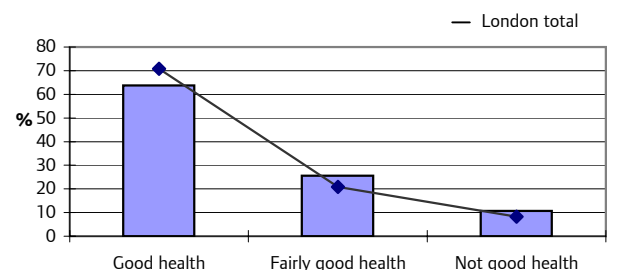
Age structure



Tenure



General health

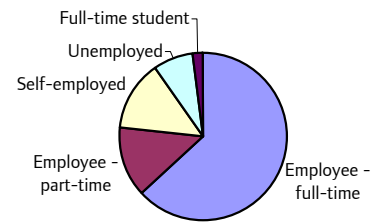


Source: 2001 Census, Commissioned Table SCT021 (C0116)

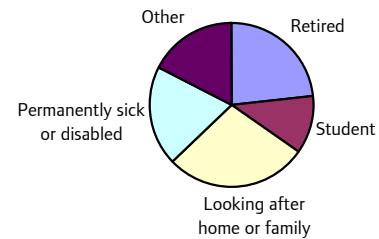
© Crown Copyright.

	Number	%	Total %
All persons 16-74	3,359		
Economically active	2,183	65.0	67.6
As a % of economically active			
Employee - full-time	1,376	63.0	63.1
Employee - part-time	300	13.7	12.8
Self-employed	296	13.6	13.3
Unemployed	168	7.7	6.5
Full-time student	43	2.0	4.4
Economically inactive	1,176	35.0	32.4
As a % of economically inactive			
Retired	275	23.4	30.2
Student	133	11.3	20.2
Looking after home or family	329	28.0	22.1
Permanently sick or disabled	232	19.7	14.1
Other	207	17.6	13.4
Students 16-74	176	5.2	9.5
Employment Rate 16-74		62.0	66.6

Economic activity by type



Economic inactivity by type



Employment 16-74

Occupation

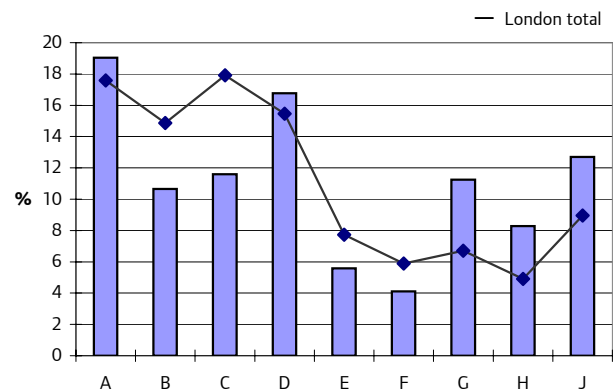
Occupation	Number	%	Total %
Total	1,991	100.0	100.0
Managers & senior officials A	379	19.0	17.6
Professional occupations B	212	10.6	14.9
Associate professionals** C	231	11.6	17.9
Administrative *** D	334	16.8	15.5
Skilled trades occupations E	111	5.6	7.7
Personal service occupations F	82	4.1	5.9
Sales & customer service occupations G	224	11.3	6.7
Process; plant & machine operative H	165	8.3	4.9
Elementary occupations J	253	12.7	9.0

Industry

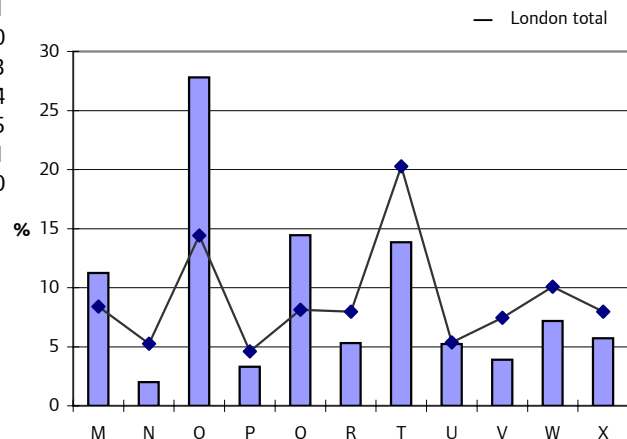
Industry	Number	%	Total %
Total	1,993	100.0	100.0
Manufacturing & primary# M	224	11.2	8.4
Construction N	40	2.0	5.3
Wholesale & retail trade O	554	27.8	14.4
Hotels & restaurants P	66	3.3	4.6
Transport; storage & communications Q	288	14.5	8.1
Financial intermediation R	106	5.3	8.0
Real estate; renting## T	276	13.8	20.3
Public administration### U	104	5.2	5.4
Education V	78	3.9	7.5
Health & social work W	143	7.2	10.1
Other X	114	5.7	8.0

* Owner occupier includes with a mortgage and part rent - part buy
 ** Associate professionals & technical occupations
 *** Administrative & secretarial occupations
 # includes agriculture, fishing, mining and utilities
 ## Real estate; renting & business activities
 ### Public administration & defence; social security

Occupational breakdown



Industry breakdown



Appendix 1: Glossary

Accommodation Type

Accommodation type describes the type of accommodation occupied by an individual household, or if unoccupied, available for an individual household, for example the whole of a terraced house or a flat in a purpose built block of flats.

Cars and vans

The number of cars or vans owned, or available for use, by one or more members of a household. It includes company cars and vans available for private use. The count of cars or vans in an area relates only to households. Cars or vans used by residents of communal establishments are not counted.

Central Heating

A household's accommodation is described as 'with central heating' if it has central heating in some or all rooms (whether used or not). Central heating includes gas, oil or solid fuel central heating, night storage heaters, warm air heating and under floor heating. The information is not available for unoccupied household spaces.

Cohabiting

Two people are described as cohabiting if they are living together as a couple but are not married to each other. This includes people living with a partner of the same sex. A cohabiting person might be married (to someone not resident in the household) but will not be shown as married or separated in the living arrangements tables.

Communal Establishment

A communal establishment is defined as an establishment providing managed residential accommodation. Managed means full-time or part-time supervision of the accommodation. In most cases (for example, prisons, large hospitals, hotels) communal establishments can be easily identified. However, difficulties can arise with small hotels, guesthouses and sheltered accommodation. Special rules apply in these cases: Small hotels and guesthouses are treated as communal establishments if they have the capacity to have 10 or more guests, excluding the owner/manager and his/her family. Sheltered housing is treated as a communal establishment if less than half the residents possess their own facilities for cooking. If half or more possess their own facilities for cooking (regardless of use) the whole establishment is treated as separate households. Communal establishments have been excluded from calculations unless otherwise stated.

Country of Birth

There are five tick box responses to the country of birth question: one each for the four parts of the UK and one for the Republic of Ireland. Where there is no applicable tick box, people were asked to write in the present name of their country of birth. The written responses are coded using the ONS Geography Classification of Countries. Countries are classified in output according to the geographical position rather than politics. For example, the Canary Islands are classified as North Africa rather than Western Europe even though they belong to Spain.

Economic Activity

The Economic Activity questions apply only to people aged 16 to 74. They relate to whether or not a person was working or looking for work in the week before Census. The concept of Economic Activity is compatible with the International Labour Organisation (ILO) definition of economic status.

Economically Active

All people who were working in the week before the Census are described as economically active. In addition, the category includes people who were not working but were looking for work and were available to start work within 2 weeks. Full-time students who are economically active are included but are identified separately in the classification. The economic activity questions are only asked of people aged 16 to 74.

Economically Inactive

Within the Economic Activity classification, a person is either Economically Active or Inactive. Specific categories of Economic Inactivity are: Retired, Student (excludes those students who were working or in some other way were economically active), Looking after family/ home, Permanently sick/ disabled and Other. A person who is looking for work but is not available to start work within 2 weeks is counted as Economically Inactive. Economic Activity questions are only asked of people aged 16 to 74.

Employed

Any person who did paid work in the week before the Census, whether as an employee or self-employed, is described as employed or in employment. 'Paid work' includes casual or temporary work, even if only for one hour; being on a government-sponsored training scheme; being away from a job/business ill, on maternity leave, on holiday or temporarily laid off; or doing paid or unpaid work for their own or family business.

Employee

The distinction between employee and self-employed is determined by the response to the question 'Do (did) you work as an employee or are (were) you self-employed?' It relates to the person's Main job in the week before the Census or, if not working in the week before the Census, their last Main job.

Employment Rate 16-74

Calculated as a percentage of those aged 16 to 74 working full-time, part-time and self employed minus economically active full-time students divided by the population aged 16-74 minus economically active and inactive students.

Full-time student

A full-time student is a person of any age who has indicated that they are a schoolchild or student in full-time education. Full-time students and schoolchildren who are economically active are identified separately in the economic activity tables. They are not included in the other categories of economically active such as 'employees' or 'unemployed'. In tables on occupation and industry, where students are not identified separately, they are included under the appropriate occupation or industry. The economic activity questions are only asked of people aged 16 to 74.

Full-time working

Working full-time is defined as working 31 hours or more a week.

GLA

Greater London Authority

General Health

A self-assessment of a person's general health over the 12 months before the Census.

Higher level qualifications includes level 4/5

Level 4/5: First degree, Higher degree, NVQ levels 4 and 5, HNC, HND, Qualified Teacher status, Qualified Medical Doctor, Qualified Dentist, Qualified Nurse, Midwife, Health Visitor

Industry

The industry in which a person works is determined by the response to the question asking for a description of the business of the person's employer (or own business if self-employed). The responses are coded to a modified version of the UK Standard Industrial Classification of Economic Activities 1992 – UK SIC (92).

Limiting long-term illness

A self assessment of whether or not a person has a limiting long-term illness, health problem or disability which limits their daily activities or the work they can do, including problems that are due to old age.

Living arrangements

The living arrangements classification combines the responses to the question on legal marital status and whether people are, or are not, living as a couple. It applies only to people in households.

Living in a couple

Includes both living with a spouse and cohabiting.

Living rent free

Could include households that are living in accommodation other than private rented

Lone parent family

Usually, a Lone parent family is a father or mother with his or her child(ren) where the parent does not have a spouse or partner in the household and the child(ren) do not have a spouse, partner or child in the household. It also includes a lone grandparent with his or her grandchild(ren) where there are no children in the intervening generation in the household.

Lower level qualifications include level 1 to 3

Level 1: 1+ 'O' level passes, 1+ CSE/GCSE any grades, NVQ level 1, Foundation GNVQ

Level 2: 5+ 'O' level passes, 5+ CSEs (grade 1). 5+ GCSEs (grades A-C), School Certificate, 1+'A' levels/ AS levels, NVQ level 2, Intermediate GNVQ

Level 3: 2+ 'A' levels, 4+ AS levels, Higher School certificate, NVQ level 3, Advanced GNVQ

Occupancy rating

This provides a measure of under occupancy and over crowding. It relates the actual number of rooms to the number of rooms 'required' by the members of the household (based on a relationship between them and their ages). The room requirement is calculated as follows:

- a one person household is assumed to require three rooms (two common rooms and a bedroom) - where there are two or more residents it is assumed that they require a minimum of two common rooms plus one bedroom for:

- i. each couple (as determined by the relationship question)
- ii. each lone parent
- iii. any other person aged 16 or over
- iv. each pair aged 10 to 15 of the same sex
- v. each pair formed from a remaining person aged 10 to 15 with a child aged under 10 of the same sex
- vi. each pair of children aged under 10 remaining
- vii. each remaining person (either aged 10 to 15 or under 10).

Occupation

A person's occupation is coded from the response to the question asking for the full title of the Main job and the description of what is done in that job. It is coded to the 2000 edition of the Standard Occupational Classification (SOC).

ONS

Office for National Statistics

Other Social rented

Includes rented from Registered Social Landlord, Housing Association, Housing Co-operative, Charitable Trust and non-profit housing company.

Owned

This includes accommodation that is either owned outright, owned with a mortgage or loan, or shared ownership (paying part rent and part mortgage).

Part-time working

Working part-time is defined as working 30 hours or less a week.

Permanently sick/disabled

This is a sub-category of 'economically inactive'. There is no direct connection with limiting long-term illness.

Population base

The 2001 Census has been conducted on a resident basis. This means the statistics relate to where people usually live, as opposed to where they are on Census night. Students and schoolchildren studying away from the family home are counted as resident at their term-time address. As in 1981 and 1991, residents absent from home on Census night were required to be included on the Census form at their usual/resident address. Wholly absent households were legally required to complete a Census form on their return. No information is provided on people present, but not usually resident (Persons Present Population Base 1991).

Private rented

This includes accommodation that is rented from a private landlord or letting agency, employer of a household member, relative or friend of a household member, or other non social rented.

Self-employed

The distinction between employee and self-employed is determined by the response to the question 'Do (did) you work as an employee or are (were) you self-employed?' It relates to the person's Main job in the week before Census or, if not working in the week before Census, their last Main job.

Tenure

The tenure of a household is derived from the response to the question asking whether the household owns or rents its accommodation and, if rented, from the response to the question asking who is the landlord.

Unemployed

A person is defined as unemployed if he or she is not in employment, is available to start work in the next 2 weeks and has either looked for work in the last 4 weeks or is waiting to start a new job. This is consistent with the International Labour Office (ILO) standard classification.

Appendix 2

List of countries by commissioned table

C0116

Afghanistan	Israel	Somalia
Albania	Italy	Sri Lanka
Algeria	Ivory Coast	Sudan
Angola	Jamaica	Swaziland
Argentina	Japan	Sweden
Australia	Jordan	Syrian Arab Republic
Austria	Kenya	Taiwan
Bangladesh	Kuwait	Tanzania
Belgium	Latvia	Thailand
Bolivia	Lebanon	Trinidad and Tobago
Bosnia and Herzegovina	Liberia	Tunisia
Botswana	Libya	Turkey
Brazil	Lithuania	Ukraine
Brunei	Luxembourg	United Arab Emirates
Bulgaria	Macedonia	United States of America
Burundi	Malawi	Uruguay
Chile	Malaysia	Venezuela
China	Malta and Gozo	Vietnam
Colombia	Mauritius	West Indies (not otherwise stated)
Congo	Mexico	Yemen
Croatia	Morocco	Yugoslavia
Cuba	Mozambique	Zambia
Cyprus	Myanmar	Zimbabwe
Czech Republic	Namibia	Madagascar and Maldives
Democratic Republic of Congo	Nepal	El Salvador, Guatemala, Honduras
Dominica	Nigeria	Russia, Mongolia
Ecuador	Occupied Territories (Gaza & West Bank)	Turks and Caicos Islands and other areas
Egypt	Oman	Cameroon and other areas
Eritrea	Pakistan	Panama, Nicaragua, Costa Rica
Estonia	Papua New Guinea	Western Samoa and other areas
Ethiopia	Peru	South Africa, Lesotho
Gambia	Philippines	Georgia Republic, Armenia, Azerbaijan
Germany	Poland	Romania, Moldova
Ghana	Portugal	Montenegro, Serbia,
Greece	Qatar	Uzbekistan and others
Grenada	Republic of Ireland	Laos, Cambodia
Hong Kong	Rwanda	Suriname, Guyana, French Guiana
Hungary	Saudi Arabia	Guinea and others
India	Seychelles	Liechtenstein, Switzerland
Indonesia	Sierra Leone	Monaco, France
Iran	Singapore	Korea, Republic of, and Korea, Democratic
Iraq	Slovakia	People's Republic of
Isle of Man	Slovenia	all others

C0116a

Finland	Spain	Born in the UK
Denmark	Netherlands	

C0116b

Bahamas	Bermuda	Norway
Bahrain	Canada	St Christopher, St Kitts and Nevis
Barbados	Fiji	St Lucia
Belarus	Iceland	St Vincent and the Grenadines
Belize	New Zealand	Uganda

Source: 2001 Census, Commissioned Tables C0116

ONS definition of countries and aggregated areas; and which tables they can be found

British Virgin Islands						C0106a				
Brunei			SCT021			C0106a C0115a	C0182			ES03
Bulgaria			SCT021			C0106a C0115a	C0182			ES03
Burkina Faso						C0106a C0115a				ES03
Burundi			SCT021			C0106a C0115a	C0182			ES03
Cambodia						C0106a C0115a	C0182			ES03
Cameroon						C0106a C0115a	C0182			ES03
Cameroon and other areas			SCT021							
Canada	UV008	ST015 ST102 ST150	SCT021			C0106a	C0154 C0182 M225			ES03
Cape Verde						C0106a				ES03
Caribbean & West Indies		ST015 ST102 ST150				C0154	M225			
Cayman Islands						C0106a				
Central African Republic						C0106a C0115a				ES03
Central and Western Africa	UV008	ST015 ST102 ST150		C0004		C0154	M225			
Central Europe										ES03 ES07
Chad						C0106a C0115a				ES03
Channel Islands	UV008					C0106a	C0182			
Channel Islands and Isle of Man		ST015 ST102 ST150 CAS015		C0004		C0154	M225			
Chile			SCT021			C0106a C0115a	C0182			ES03
China	UV008	ST015 ST102 ST150	SCT021			C0106a C0115a	C0182			ES03
China (including Hong Kong)										
Colombia			SCT021			C0106a C0115a	C0182			ES03
Commonwealth of (Russian) Independent States						C0106a	C0182			
Comoros						C0106a				ES03
Congo			SCT021			C0106a C0115a	C0182			ES03
Cook Islands						C0106a				
Costa Rica						C0106a C0115a				ES03
Croatia			SCT021			C0106a C0115a	C0182			ES03
Cuba			SCT021			C0106a C0115a	C0182			ES03
Curacao							C0182			
Cyprus	UV008	ST015	SCT021			C0106a C0115a	C0182 M225			ES03
Czech Republic	UV008		SCT021			C0106a C0115a	C0182			ES03
Czechoslovakia							C0182			
Democratic Republic of Congo	UV008		SCT021			C0106a C0115a	C0182			ES03
Denmark	UV008		SCT021			C0106a	C0182			ES03
Djibouti						C0106a C0115a				ES03
Dominica			SCT021			C0106a C0115a	C0182			ES03
Dominican Republic						C0106a C0115a				ES03
Dubai							C0182			

ONS definition of countries and aggregated areas; and which tables they can be found

Lesotho				C0106a	C0115a				ES03
Liberia			SCT021	C0106a	C0115a		C0182		ES03
Libya			SCT021	C0106a	C0115a		C0182		ES03
Liechtenstein				C0106a	C0115a				ES03
Liechtenstein, Switzerland			SCT021						
Lithuania			SCT021	C0106a	C0115a		C0182		ES03
Luxembourg		UV008	SCT021	C0106a	C0115a		C0182		ES03
Macao				C0106a			C0182		
Macedonia			SCT021	C0106a	C0115a		C0182		ES03
Madagascar				C0106a	C0115a				ES03
Madagascar and Maldives			SCT021				C0182		
Malawi			SCT021	C0106a	C0115a		C0182		ES03
Malaysia		UV008	SCT021	C0106a	C0115a	ST015	C0182	M225	ES03
Maldives				C0106a	C0115a				ES03
Mali				C0106a	C0115a				ES03
Malta and Gozo			SCT021	C0106a	C0115a		C0182		ES03
Marshall Islands				C0106a					ES03
Martinique				C0106a					
Mauritania				C0106a	C0115a				ES03
Mauritius			SCT021	C0106a	C0115a		C0182		ES03
Mexico			SCT021	C0106a	C0115a		C0182		ES03
Middle East		UV008		C0004		ST102 ST150	C0154	M225	ES03 ES07
Moldova				C0106a	C0115a		C0182		ES03
Monaco				C0106a	C0115a				ES03
Monaco, France			SCT021						
Mongolia				C0106a	C0115a				ES03
Montenegro				C0106a	C0115a				
Montserrat				C0106a			C0182		
Morocco			SCT021	C0106a	C0115a		C0182		ES03
Mozambique			SCT021	C0106a	C0115a		C0182		ES03
Myanmar			SCT021	C0106a	C0115a		C0182		ES03
Namibia			SCT021	C0106a	C0115a		C0182		ES03
Nauru				C0106a	C0115a				ES03
Nepal			SCT021	C0106a	C0115a		C0182		ES03
Netherland Antilles				C0106a			C0182		
Netherlands		UV008	SCT021			ST015	C0182	M225	
New Caledonia				C0106a					
New Zealand		UV008	SCT021	C0106a		ST015	C0182	M225	ES03
Nicaragua				C0106a	C0115a				ES03

ONS definition of countries and aggregated areas; and which tables they can be found

Peru						SCT021	C0106a	C0115a	C0182	ES03				
Philippines						SCT021	C0106a	C0115a	C0182	ES03				
Pitcairn Islands Group							C0106a							
Poland	UV008	ST015				SCT021	C0106a	C0115a	C0182	M225	ES03			
Polynesia							C0106a							
Portugal	UV008					SCT021	C0106a	C0115a	C0182	ES03				
Puerto Rico							C0106a	C0115a						
Qatar						SCT021	C0106a	C0115a	C0182	ES03				
Remainder of Africa										ES03	ES07			
Remainder of America										ES03	ES07			
Remainder of Asia										ES03	ES07			
Remainder of Europe										ES03	ES07			
Remainder of New Independent States										ES03	ES07			
Republic of Ireland	UV008	KS005	ST015	ST102	ST150	CAS015	SCT021	C0004	C0106a	C0115a	C0154	C0182	M225	ES03
Rest of Europe													M280	
Reunion							C0106a							
Romania	UV008						C0106a	C0115a	C0182	ES03				
Romania, Moldova						SCT021			C0182					
Russia							C0106a	C0115a	C0182					
Russia, Mongolia						SCT021								
Russian Federation														ES03
Rwanda						SCT021	C0106a	C0115a	C0182	ES03				
San Marino							C0106a			ES03				
Sao Tome and Principe							C0106a			ES03				
Saudi Arabia						SCT021	C0106a	C0115a	C0182	ES03				
Scotland	UV008	KS005	ST015	ST102	ST150	CAS015		C0004	C0154	C0182	M225			
Senegal							C0106a	C0115a	C0182	ES03				
Serbia							C0106a	C0115a	C0182					
Seychelles						SCT021	C0106a	C0115a	C0182	ES03				
Sierra Leone	UV008					SCT021	C0106a	C0115a	C0182	ES03				
Singapore	UV008	ST015				SCT021	C0106a	C0115a	C0182	M225	ES03			
Slovakia						SCT021	C0106a	C0115a	C0182	ES03				
Slovenia						SCT021	C0106a	C0115a	C0182	ES03				
Solomon Islands							C0106a			ES03				
Somalia	UV008					SCT021	C0106a	C0115a	C0182	ES03				
South Africa	UV008	ST015	ST102	ST150			C0106a	C0115a	C0154	C0182	M225	ES03		
South Africa, Lesotho						SCT021								
South America	UV008	ST015	ST102	ST150	CAS015		C0004		C0154	M225				
South and Eastern Africa	UV008	ST015	ST102	ST150			C0004		C0154	M225				

ONS definition of countries and aggregated areas; and which tables they can be found

South Asia	UV008	ST015	ST102	ST150	C0004	C0154	M225	ES03
Spain	UV008	ST015			SCT021	C0106a	C0182	M225
Sri Lanka	UV008				SCT021	C0106a	C0182	
St Christopher (St Kitts) - Nevis					SCT021	C0106a	C0182	
St Christopher and Nevis								ES03
St Helena						C0106a	C0182	
St Lucia					SCT021	C0106a	C0182	ES03
St Pierre et Miquelon						C0106a		
St Vincent and the Grenadines					SCT021	C0106a	C0182	ES03
Sudan					SCT021	C0106a	C0182	ES03
Suriname						C0106a	C0182	ES03
Suriname, Guyana, French Guiana					SCT021			
Swaziland					SCT021	C0106a	C0182	ES03
Sweden	UV008				SCT021	C0106a	C0182	ES03
Switzerland						C0106a	C0182	ES03
Syrian Arab Republic					SCT021	C0106a	C0182	ES03
Taiwan					SCT021	C0106a	C0182	ES03
Tajikistan						C0106a	C0182	ES03
Tanzania					SCT021	C0106a	C0182	ES03
Thailand					SCT021	C0106a	C0182	ES03
The Netherlands						C0106a	C0182	ES03
Togo						C0106a	C0182	ES03
Tokelau Islands						C0106a		
Tonga						C0106a	C0182	ES03
Trinidad and Tobago					SCT021	C0106a	C0182	ES03
Tunisia					SCT021	C0106a	C0182	ES03
Turkey	UV008				SCT021	C0106a	C0182	ES03
Turkmenistan						C0106a	C0182	ES03
Turks and Caicos Islands						C0106a	C0182	ES03
Turks and Caicos Islands & other areas					SCT021			
Tuvalu						C0106a	C0182	ES03
Uganda					SCT021	C0106a	C0182	ES03
Ukraine					SCT021	C0106a	C0182	ES03
Union of Soviet Socialist States						C0106a		
United Arab Emirates					SCT021	C0106a	C0182	ES03
United Kingdom	UV008	ST015	ST102	ST150	CAS015	C0004	C0154	M225
United States of America	UV008	ST015	ST102	ST150	SCT021	C0106a	C0182	M280
Uruguay					SCT021	C0106a	C0182	M225
US Virgin Islands					SCT021	C0106a	C0182	ES03

ONS definition of countries and aggregated areas; and which tables they can be found

Uzbekistan	SCT021	C0106a C0115a	C0182	ES03
Vanuatu		C0106a C0115a		ES03
Vatican City State				ES03
Venezuela	SCT021	C0106a C0115a	C0182	ES03
Vietnam	SCT021	C0106a C0115a	C0182	ES03
Wales	UV008 KS005 ST015 ST102 ST150 CAS015	C0004	C0154 C0182 M225	
Wallis and Futuna Islands		C0106a		
West Indies (not otherwise stated)	SCT021	C0106a C0115a	C0182	
Western Samoa		C0106a C0115a		ES03
Western Samoa and other areas	SCT021			
Yemen	SCT021	C0106a C0115a		ES03
Yugoslavia	SCT021	C0106a C0115a	C0182	
Zambia	SCT021	C0106a C0115a	C0182	ES03
Zimbabwe	UV008 ST015 ST102 ST150	C0106a C0115a C0154	C0182 M225	ES03

Table Number	Table Name	Geography	Number of countries / areas
UV008	Country of birth	Output Area to England & Wales	81
KS005	Country of birth	Output Area to England & Wales	7
ST015	Country of Birth by sex and age	Ward to England & Wales	62
ST102	Sex and country of birth by ethnic group	Ward to England & Wales	44
ST150	Sex and country of birth by religion	Ward to England & Wales	44
CAS015	Country of birth by sex	Output Area to England & Wales	18
SCT021 / C0116	Theme table on residents of England & Wales, by specified country of birth	GOR, England & Wales	146
C0182	Country of Birth by sex and age - 200+ people	London, Inner and Outer London, London Boroughs	179

Commissioned Tables available on request

C0004	Age and country of birth by ethnicity	GOR, Wales, England, England & Wales	25
C0106a + b	Highest Level of Qualification by Country of Birth	UK	245
C0115a + b	Residents by specified country of birth	GOR, England & Wales	174
C0154	Country of Birth by Highest level of Qualification	UK	44
M225	Country of birth (same as ST015)	GOR, England & Wales	62
M280	Sex and country of birth by religion (subset of ST150)	GOR, England & Wales	6
ES03	Usual resident population by sex, country of birth and age group	UK	219
ES07	Usual resident population by sex, group of country of birth and economic activity	UK	18

GOR - Government Office Region

2001 Census Commissioned Tables Geography: Regions and above Area Identifier											
PRODUCED USING SASPAC Zone Name = CROWN COPYRIGHT RESERVED											
Table SCT021 (C0116) THEME TABLE ON RESIDENTS BY SPECIFIED COUNTRY OF BIRTH											
Table population: Residents by specified country of birth											
	All People	Age in years									
		0 to 4	5 to 15	16 to 24	25 to 44	45 to 59	60 to 64	65 to 74	75 +		
All People											
Males	1	2	3	4	5	6	7	8	9		
Females	10	11	12	13	14	15	16	17	18		
Accommodation Type											
Household in unshared accommodation	19	20	21	22	23	24	25	26	27		
House or bungalow	28	29	30	31	32	33	34	35	36		
Flat, maisonette or apartment	37	38	39	40	41	42	43	44	45		
Caravan or other mobile or temporary structure	46	47	48	49	50	51	52	53	54		
Household in shared accommodation	55	56	57	58	59	60	61	62	63		
Communal Establishment	64	65	66	67	68	69	70	71	72		
Medical and care establishment	73	74	75	76	77	78	79	80	81		
Other type of establishment	82	83	84	85	86	87	88	89	90		
Occupancy Rating											
+2 or more	91	92	93	94	95	96	97	98	99		
+1	100	101	102	103	104	105	106	107	108		
0	109	110	111	112	113	114	115	116	117		
-1 or less	118	119	120	121	122	123	124	125	126		
Living in a Communal Establishment	127	128	129	130	131	132	133	134	135		
Amenities											
Sole use of bath/shower and toilet	136	137	138	139	140	141	142	143	144		
Does not have sole use of bath/shower and toilet	145	146	147	148	149	150	151	152	153		
Living in a Communal Establishment	154	155	156	157	158	159	160	161	162		
Central Heating											
Accommodation has central heating	163	164	165	166	167	168	169	170	171		
Accommodation does not have central heating	172	173	174	175	176	177	178	179	180		
Living in a Communal Establishment	181	182	183	184	185	186	187	188	189		

2001 Census Commissioned Tables Geography: Regions and above Area Identifier											
PRODUCED USING SASPAC Zone Name = CROWN COPYRIGHT RESERVED											
Table SCT021 (C0116) THEME TABLE ON RESIDENTS BY SPECIFIED COUNTRY OF BIRTH											
Table population: Residents by specified country of birth											
	All People	Age in years									
		0 to 4	5 to 15	16 to 24	25 to 44	45 to 59	60 to 64	65 to 74	75 +		
Car or Van Availability											
No cars or vans in household	190	191	192	193	194	195	196	197	198		
One car or van in household	199	200	201	202	203	204	205	206	207		
Two or more cars or vans in household	208	209	210	211	212	213	214	215	216		
Living in a Communal Establishment	217	218	219	220	221	222	223	224	225		
Tenure											
Owens outright	226	227	228	229	230	231	232	233	234		
Owens with a mortgage or loan	235	236	237	238	239	240	241	242	243		
Shared ownership	244	245	246	247	248	249	250	251	252		
Rented from council	253	254	255	256	257	258	259	260	261		
Other social rented	262	263	264	265	266	267	268	269	270		
Private rented	271	272	273	274	275	276	277	278	279		
Living rent free	280	281	282	283	284	285	286	287	288		
Living in a Communal Establishment	289	290	291	292	293	294	295	296	297		
Living Arrangements											
Living in a couple	298	299	300	301	302	303	304	305	306		
Married or re-married	307	308	309	310	311	312	313	314	315		
Cohabiting	316	317	318	319	320	321	322	323	324		
Not living in a couple	325	326	327	328	329	330	331	332	333		
Single (never married)	334	335	336	337	338	339	340	341	342		
Married or re-married	343	344	345	346	347	348	349	350	351		
Separated (but still legally married)	352	353	354	355	356	357	358	359	360		
Widowed	361	362	363	364	365	366	367	368	369		
Divorced	370	371	372	373	374	375	376	377	378		
Living in a Communal Establishment	379	380	381	382	383	384	385	386	387		

2001 Census Commissioned Tables Geography: Regions and above
Area Identifier

PRODUCED USING SASPAC Zone Name = CROWN COPYRIGHT RESERVED

Table SCT021 (C0116) THEME TABLE ON RESIDENTS BY SPECIFIED COUNTRY OF BIRTH

Table population: Residents by specified country of birth

Page 3 of 6

	All People	Age in years												
		0 to 4	5 to 15	16 to 24	25 to 44	45 to 59	60 to 64	65 to 74	75 +					
Family Type														
Lone parent family	388	389	390	391	392	393	394	395	396					
Married couple family	397	398	399	400	401	402	403	404	405					
Cohabiting couple family	406	407	408	409	410	411	412	413	414					
Not living in a family but with others in the household	415	416	417	418	419	420	421	422	423					
Living alone	424	425	426	427	428	429	430	431	432					
Living in a Communal Establishment	433	434	435	436	437	438	439	440	441					
Country of Birth														
Born in the UK	442	443	444	445	446	447	448	449	450					
Born outside the UK	451	452	453	454	455	456	457	458	459					
General Health														
Good Health	460	461	462	463	464	465	466	467	468					
Fairly Good Health	469	470	471	472	473	474	475	476	477					
Not Good Health	478	479	480	481	482	483	484	485	486					
Limiting Long-term illness														
Has a limiting long-term illness	487	488	489	490	491	492	493	494	495					
Does not have a limiting long-term illness	496	497	498	499	500	501	502	503	504					
Qualifications														
No qualifications or level unknown	505	xxx	xxx	508	509	510	511	512	xxx					
Lower level qualifications	514	xxx	xxx	517	518	519	520	521	xxx					
Higher level qualifications	523	xxx	xxx	526	527	528	529	530	xxx					
Not aged 16 to 74	532	533	534	xxx	xxx	xxx	xxx	xxx	540					

2001 Census Commissioned Tables Geography: Regions and above
Area Identifier

PRODUCED USING SASPAC Zone Name = CROWN COPYRIGHT RESERVED

Table SCT021 (C0116) THEME TABLE ON RESIDENTS BY SPECIFIED COUNTRY OF BIRTH

Table population: Residents by specified country of birth

Page 4 of 6

	All People	Age in years												
		0 to 4	5 to 15	16 to 24	25 to 44	45 to 59	60 to 64	65 to 74	75 +					
Economic Activity														
Economically active	541	xxx	xxx	544	545	546	547	548	xxx					
Employee - Part-time	550	xxx	xxx	553	554	555	556	557	xxx					
Employee - Full-time	559	xxx	xxx	562	563	564	565	566	xxx					
Self-employed - Part-time	568	xxx	xxx	571	572	573	574	575	xxx					
Self-employed - Full-time	577	xxx	xxx	580	581	582	583	584	xxx					
Unemployed	586	xxx	xxx	589	590	591	592	593	xxx					
Full-time student	595	xxx	xxx	598	599	600	601	602	xxx					
Economically inactive	604	xxx	xxx	607	608	609	610	611	xxx					
Retired	613	xxx	xxx	616	617	618	619	620	xxx					
Student	622	xxx	xxx	625	626	627	628	629	xxx					
Looking after home/family	631	xxx	xxx	634	635	636	637	638	xxx					
Permanently sick or disabled	640	xxx	xxx	643	644	645	646	647	xxx					
Other	649	xxx	xxx	652	653	654	655	656	xxx					
Not aged 16 to 74	658	659	660	xxx	xxx	xxx	xxx	xxx	666					
Occupation														
1. Managers and Senior Officials	667	xxx	xxx	670	671	672	673	674	xxx					
2. Professional Occupations	676	xxx	xxx	679	680	681	682	683	xxx					
3. Associate Professional and Technical Occupations	685	xxx	xxx	688	689	690	691	692	xxx					
4. Administrative and Secretarial Occupations	694	xxx	xxx	697	698	699	700	701	xxx					
5. Skilled Trades Occupations	703	xxx	xxx	706	707	708	709	710	xxx					
6. Personal Service Occupations	712	xxx	xxx	715	716	717	718	719	xxx					
7. Sales and Customer Service Occupations	721	xxx	xxx	724	725	726	727	728	xxx					
8. Process, Plant and Machine Operatives	730	xxx	xxx	733	734	735	736	737	xxx					
9. Elementary Occupations	739	xxx	xxx	742	743	744	745	746	xxx					
Not currently working	748	xxx	xxx	751	752	753	754	755	xxx					
Not aged 16 to 74	757	758	759	xxx	xxx	xxx	xxx	xxx	765					

2001 Census Commissioned Tables Geography: Regions and above
Area Identifier
PRODUCED USING SASPAC Zone Name = CROWN COPYRIGHT RESERVED
Page 5 of 6
Table SCT021 (C0116) THEME TABLE ON RESIDENTS BY SPECIFIED COUNTRY OF BIRTH
Table population: Residents by specified country of birth

	All People	Age in years												
		0 to 4	5 to 15	16 to 24	25 to 44	45 to 59	60 to 64	65 to 74	75 +					
NS-Sec														
1. Higher managerial and professional occupations	766	xxx	xxx	769	770	771	772	773	xxx					xxx
1.1. Large employers and higher managerial occupations	775	xxx	xxx	778	779	780	781	782	xxx					xxx
1.2. Higher professional occupations	784	xxx	xxx	787	788	789	790	791	xxx					xxx
2. Lower managerial and professional occupations	793	xxx	xxx	796	797	798	799	800	xxx					xxx
3. Intermediate Occupations	802	xxx	xxx	805	806	807	808	809	xxx					xxx
4. Small employers and own account workers	811	xxx	xxx	814	815	816	817	818	xxx					xxx
5. Lower supervisory and technical occupations	820	xxx	xxx	823	824	825	826	827	xxx					xxx
6. Semi-routine occupations	829	xxx	xxx	832	833	834	835	836	xxx					xxx
7. Routine occupations	838	xxx	xxx	841	842	843	844	845	xxx					xxx
8. Never worked or long-term unemployed	847	xxx	xxx	850	851	852	853	854	xxx					xxx
L14.1. Never worked	856	xxx	xxx	859	860	861	862	863	xxx					xxx
L14.2. Long term unemployed	865	xxx	xxx	868	869	870	871	872	xxx					xxx
Not classified	874	xxx	xxx	877	878	879	880	881	xxx					882
L15. full-time students	883	xxx	xxx	886	887	888	889	890	xxx					891
L15. Not classifiable for other reasons	892	xxx	xxx	895	896	897	898	899	xxx					900
Under 16	901	902	903	xxx	xxx	xxx	xxx	xxx	xxx					xxx

2001 Census Commissioned Tables Geography: Regions and above
 PRODUCED USING SASPAC Zone Name = CROWN COPYRIGHT RESERVED

Table SCT021 (C0116) THEME TABLE ON RESIDENTS BY SPECIFIED COUNTRY OF BIRTH

Table population: Residents by specified country of birth

Industry	All People	Age in years									
		0 to 4	5 to 15	16 to 24	25 to 44	45 to 59	60 to 64	65 to 74	75 +		
A Agriculture, Hunting, Forestry	910	xxx	xxx	913	914	915	916	917	xxx		
B Fishing	919	xxx	xxx	922	923	924	925	926	xxx		
C Mining and Quarrying	928	xxx	xxx	931	932	933	934	935	xxx		
D Manufacturing	937	xxx	xxx	940	941	942	943	944	xxx		
E Electricity, Gas and Water Supply	946	xxx	xxx	949	950	951	952	953	xxx		
F Construction	955	xxx	xxx	958	959	960	961	962	xxx		
G Wholesale and Retail trade, Repairs	964	xxx	xxx	967	968	969	970	971	xxx		
H Hotels and Restaurants	973	xxx	xxx	976	977	978	979	980	xxx		
I Transport Storage and Communications	982	xxx	xxx	985	986	987	988	989	xxx		
J Financial Intermediation	991	xxx	xxx	994	995	996	997	998	xxx		
K Real Estate, Renting and Business Activities	1000	xxx	xxx	1003	1004	1005	1006	1007	xxx		
L Public Administration and defence social security	1009	xxx	xxx	1012	1013	1014	1015	1016	xxx		
M Education	1018	xxx	xxx	1021	1022	1023	1024	1025	xxx		
N Health and Social Work	1027	xxx	xxx	1030	1031	1032	1033	1034	xxx		
O,P,Q Other	1036	xxx	xxx	1039	1040	1041	1042	1043	xxx		
Not currently working	1045	xxx	xxx	1048	1049	1050	1051	1052	xxx		
Not aged 16 to 74	1054	1055	1056	xxx	xxx	xxx	xxx	xxx	1062		

1. The occupancy rating provides a measure of under-occupancy and overcrowding. For example, a value of -1 implies that there is one room too few and that there is overcrowding in the household. The occupancy rating assumes that every household, including one person households, requires a minimum of two common (excluding bathrooms)

2. Car or van availability includes any company car or van if available for private use.

3. The term 'no qualifications' describes people without any academic, vocational or professional qualifications. The term 'lower level' qualifications is used to describe qualifications equivalent to levels 1 to 3 of the National Key Learning Targets (i.e. GCSE's, 'O' levels, 'A' levels, NVQ levels 1-3). The term 'higher level' refers to qualifications of level 4 and above (i.e. first degrees, higher degrees, NVQ levels 4 and 5, HND, HNC and certain professional qualifications).

4. The terms used to describe tenure are defined as:
 Other social rented includes rented from Registered Social Landlord, Housing Association, Housing Co-operative and Charitable Trust.
 Private rented: renting from a private landlord or letting agency, employer of a household member, or relative or friend of a household member or other person.

5. 'Other' industry includes other community, social and personal service activities, private households with employed persons and extra-territorial organisations and bodies.

6. In the NS-SeC classification, all full-time students are recorded in the 'full-time students' category regardless of whether they are economically active or not.

7. 'Not classifiable for other reasons' includes people who have not been coded and those who cannot be allocated to a NS-SeC category.

8. For long-term unemployed, year last worked is 1999 or earlier.

Regular Briefings from the GLA Data Management and Analysis Group

Recent DMAG Briefings:

DMAG 2005/1	County of Birth and Labour Market Outcomes	Lorna Spence
DMAG 2005/2	2001 Census: London Country of Birth Profiles	Giorgio Finella
DMAG 2005/3	2001 Census: Economic Activity in London	Giorgio Finella
DMAG 2005/4	2001 Census Profiles: Pakistanis in London	Gareth Piggott
DMAG 2005/5	Indices of Deprivation 2004: Ward analysis	Lovedeep Vaid
DMAG 2005/6	London – The World in a City	Marian Mackintosh
DMAG 2005/7	Claimant Count Model: Technical Note	Lorna Spence/ Georgia Hay
DMAG 2005/8	London Pupil Dataset	David Ewens
DMAG 2005/9	Borough Fertility Rates 2000-02	John Hollis/ Georgia Hay
DMAG 2005/10	Borough Life Tables 2000-02	John Hollis/ Georgia Hay
DMAG 2005/11	Demography Team Workplan 2005-06	John Hollis
DMAG 2005/12	Ethnic Diversity Indices	Baljit Bains
DMAG 2005/13	London Borough and Sub-Regional Demographic Profiles (2003)	Georgia Hay
DMAG 2005/14	Guide to accessing the LHS at the ESRC Data Archive	Lovedeep Vaid
DMAG 2005/15	GLA Ward Population Projection Manual	Georgia Hay
DMAG 2005/16	Income Poverty in London: 2003/04	Lovedeep Vaid
DMAG 2005/17	Focus on London's Demography	John Hollis
DMAG 2005/18	Census Information Note 2005-1	Eileen Howes
DMAG 2005/19	2001 Census: London Country of Birth Profiles – The Arab League	Giorgio Finella

A full list of the 2004 DMAG Briefings is available to internal customers through the GLA Intranet; otherwise please contact Jackie Maguire who can also provide a CD containing PDF versions of the Briefings or hard copies, jackie.maguire@london.gov.uk.

Contact details for the Data Management and Analysis Group are as follows:

Rob Lewis (020 7983 4652) is **Head of the Data Management and Analysis Group**. rob.lewis@london.gov.uk

Bill Armstrong (020 7983 4653) works in the **Census Team** with particular responsibilities for **commissioned tables, workplace data** and **mapping**. bill.armstrong@london.gov.uk

Baljit Bains (020 7983 4613) works in the **Demography Team** and is responsible for **ethnic demography**, including **ethnic group projections**. baljit.bains@london.gov.uk

Gareth Baker (020 7983 4965) works on **GIS** issues. gareth.baker@london.gov.uk

Shen Cheng (020 7983 4889) works on **Education data** and is responsible for **school roll projections**. shen.cheng@london.gov.uk

David Ewens (020 7983 4656) is responsible for **Education research and data analysis**. david.ewens@london.gov.uk

Giorgio Finella (020 7983 4328) works in the **Census Team**. giorgio.finella@london.gov.uk

Dennis Grenham (020 7983 4532) works mostly on **statistical compendia, election statistics** and **special publications**. dennis.grenham@london.gov.uk

Georgia Hay (020 7983 4347) works in the **Demography Team** and is responsible for **ward level projections**, the **Demography Extranet** and **borough liaison**. georgia.hay@london.gov.uk

John Hollis (020 7983 4604) is responsible for the work of the **Demography Team** and the **Social Exclusion Team**, and particularly for **demographic modelling**. john.hollis@london.gov.uk

Eileen Howes (020 7983 4657) is responsible for the work of the **Census Team** and the **SASPAC** project. eileen.howes@london.gov.uk

Ed Klodawski (020 7983 4694) works in the **Demography Team**. His post is joint with the **London Health Observatory** and specialises in **ethnic** and **health** issues. edmund.klodawski@london.gov.uk

Rachel Leeser (020 7983 4699) works in the **Social Exclusion Team** with particular responsibilities for **indicators** and **income data**. rachel.leeser@london.gov.uk (maternity leave until late 2005)

Alan Lewis (020 7983 4348) works on the **SASPAC** project. alan.lewis@london.gov.uk

Jackie Maguire (020 7983 4655) is responsible to the Group Head and co-ordinates the **administrative and financial** work of the Group. jackie.maguire@london.gov.uk

Michael Minors (020 7983 4654) is responsible for the work of the **General Statistics, Education and GIS teams**. michael.minors@london.gov.uk

Gareth Piggott (020 7983 4327) works in the **Census Team**. gareth.piggott@london.gov.uk

Lorna Spence (020 7983 4658) is a member of the **Social Exclusion Team**, with particular responsibilities for the **Labour Force Survey** and **benefits data**. lorna.spence@london.gov.uk

Lovedeep Vaid (020 7983 4699) works in the **Social Exclusion Team** with particular responsibilities for **deprivation indicators** and **income data**. lovedeep.vaid@london.gov.uk (maternity cover until late 2005)

Please use the above descriptions in deciding whom to contact to assist you with your information needs.