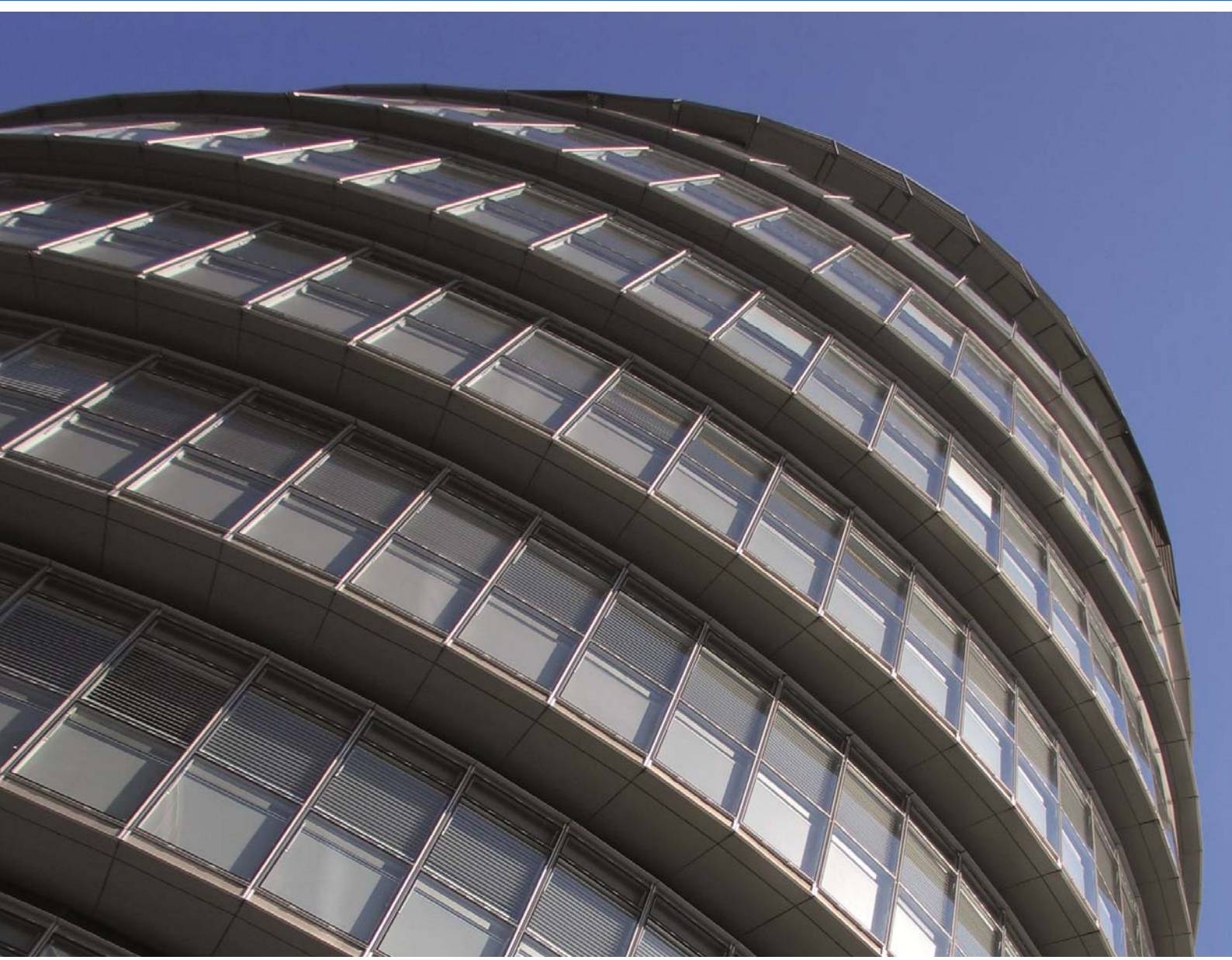


Census Information Scheme

Annual Report 2013-14

October 2014



copyright

Greater London Authority
October 2014

Published by

Greater London Authority
City Hall
The Queens Walk
London SE1 2AA

www.london.gov.uk

Tel 020 7983 4922

Minicom 020 7983 4000

Cover photograph

© Greater London Authority

For more information about this publication, please contact:

GLA Intelligence

Tel 020 7983 4922

Email census@london.gov.uk

Data and analysis from GLA Intelligence form a basis for the policy and investment decisions facing the Mayor of London and the GLA group. The GLA Intelligence Unit uses a wide range of information and data sourced from third party suppliers within its analysis and reports. GLA Intelligence cannot be held responsible for the accuracy or timeliness of this information and data.

The GLA will not be liable for any losses suffered or liabilities incurred by a party as a result of that party relying in any way on the information contained in this report.

Data are adapted from data from the Office for National Statistics licenced under the Open Government Licence v.1.0. © Crown Copyright.

Foreword



The Census Information Scheme (CIS) for the 2011 Census came into effect on 1st October 2011. The dual intention of this arrangement is to deliver the highest quality, specialised census output for the capital at the same time as ensuring optimum efficiencies and value for money for participating organisations. Beyond this the Census Information Scheme is an opportunity for London boroughs, the Greater London Authority, and its functional bodies to work together to share ideas, information and best practice to the benefit of all consortium members.

The third year of the CIS has seen the conclusion of the ONS ‘standard’ release programme and the production of more specialised datasets including the first migration and workplace flow data. This year also saw an expansion of the CIS team’s own analytical programme and we now have a comprehensive library of resources comprising reports, tools and visualisations available on the London Datastore. This year we have also seen some more ambitious projects such as the development of the London Output Area Classification which serve to underline the value of the CIS to London.

This last year also saw progress in the Office for National Statistics’ Beyond 2011 programme – the project to determine how best to collect population data in the future. In March the National Statistician and the Chair of the UK Statistics Authority made their recommendations to government securing the future of the census. I would like to thank all of those who contributed to and assisted with the GLA’s response to the Beyond 2011 consultation and I am encouraged that the final recommendations put to government reflected very closely the case put forward by the GLA.

Looking ahead, the fourth year of the CIS promises a new direction for the team at City Hall. Our work programme will increasingly focus on projects which seek to use census data creatively to answer the questions that only the census can. We will be working closely with CIS members to identify those areas where the census can be of most value and as ever I would encourage you to engage with team and ensure that your voice is heard.

We are looking forward to continuing this successful collaboration with all members as we collectively make the most of the rich and detailed information about London’s population available from the census.

Andrew Collinge

Assistant Director of Intelligence & Analysis
Greater London Authority

Contents

Foreword	3
Introduction	2
The CIS Team	3
Membership	4
London local authorities:	4
GLA Family:	4
Greater London Authority Act (1999).....	5
CIS Schedule.....	6
Analysis	6
Training	6
Communications	7
Events	8
Census User Group (CUG)	8
CIS work within the GLA.....	9
The Mayor and the London Assembly	9
Cycling to work.....	9
Characteristics of the Ultra-Low Emissions Zone.....	9
Training & Events	10
Beyond 2011	11
Data Releases	12
Commissioned tables	15
Work plan	18
London Output Area Classification	19
SASPAC	20
Financials.....	21
List of 2011 Census CIS Reports	22
Briefings	22
Snapshots	22
Release Summary Documents	23

Introduction

The Census Information Scheme (CIS) is a consortium of 33 London local authorities, the GLA and its functional bodies. It provides London-specific expert analysis of census data and represents the interests of members in discussions with the Office for National Statistics (ONS). The CIS also acts as a forum where members can discuss census issues and share best practice.

All boroughs were invited to sign up to the Census Information Scheme in January 2011. The GLA Act 1999, section 397, states that once a two-thirds majority of local authorities sign up for the CIS, it becomes mandatory for the remaining ones to join the Scheme. The Authority received 22 signed contracts from local authorities and the Scheme commenced on 1 October 2011. It will run until 2021, at a total cost of £20,000 to each local authority.

The CIS Team

The CIS is managed by a dedicated team within the GLA's Intelligence Unit comprising:

Richard Walker

Demography and Policy Analysis Manager

richard.walker@london.gov.uk

020 7983 4699

Richard Cameron

Research and Statistical Analyst - Census

richard.cameron@london.gov.uk

020 7983 4473

Wil Tonkiss

Census Analyst/Trainer

william.tonkiss@london.gov.uk

020 7983 5523

Rachel Leeser

Senior Research & Statistical Analyst - Social Exclusion

rachel.leeser@london.gov.uk

020 7983 4696

Emma White

Research & Statistical Analyst - Census

emma.white@london.gov.uk

Alan Lewis

SASPAC Programme Manager

0207 983 4348

alan.lewis@london.gov.uk

Membership

The aim of the Census Information Scheme is to provide expert analysis, share resources, create efficiencies and work towards a common vision that policy and decision making in the region is based on sound evidence. The members of the CIS consortium are:

London local authorities:

City of London
 London Borough of Barking & Dagenham
 London Borough of Barnet
 London Borough of Bexley
 London Borough of Brent
 London Borough of Bromley
 London Borough of Camden
 London Borough of Croydon
 London Borough of Ealing
 London Borough of Enfield
 Royal Borough of Greenwich
 London Borough of Hackney
 London Borough of Hammersmith & Fulham
 London Borough of Haringey
 London Borough of Harrow
 London Borough of Havering
 London Borough of Hillingdon
 London Borough of Hounslow
 London Borough of Islington
 Royal Borough of Kensington & Chelsea
 Royal Borough of Kingston upon Thames
 London Borough of Lambeth
 London Borough of Lewisham
 London Borough of Merton
 London Borough of Newham
 London Borough of Redbridge
 London Borough of Richmond upon Thames

London Borough of Southwark
 London Borough of Sutton
 London Borough of Tower Hamlets
 London Borough of Waltham Forest
 London Borough of Wandsworth
 City of Westminster

GLA Family:

Greater London Authority
 Transport for London
 Metropolitan Police Authority
 London Fire & Emergency Planning Authority (LFEPA)

Greater London Authority Act (1999)

Section 397: Information schemes

(1) The Mayor may make schemes for the collection of information relating to any matters concerning Greater London or any part of it.

(2) The schemes that may be made under this section include schemes under which each London local authority must provide to the Mayor, in accordance with the scheme, information—

(a) required by the Mayor to be provided; and

(b) falling within such description of information as is specified in the scheme.

(3) A scheme under this section may be made only after consultation with each London local authority.

(4) A scheme under this section shall have effect so as to be binding on all the London local authorities only if at least two-thirds of those authorities give their agreement to the scheme.

(5) A scheme under this section shall state whether or not it is to remain in effect indefinitely and, if it is not to remain in effect indefinitely, shall state the period for which it is to remain in effect.

(6) A scheme under this section may include provision relating to—

(a) the method by which information to be collected or provided under the scheme is to be analysed;

(b) the form in which such information is to be collected or provided;

(c) the ownership of information collected or provided under the scheme;

(d) the method by which information is to be transferred or stored under the scheme;

(e) the persons to whom information collected or provided under the scheme may, or must not, be disclosed;

(f) bearing the costs of the scheme.

(7) The provision which may be made by virtue of subsection (6)(f) above includes in particular provision—

(a) for the costs of collecting or providing information of a description specified in the scheme to be borne by the Mayor or a London local authority or by both the Mayor and a London local authority in such proportions as may be specified by or under the scheme;

(b) for the recovery of costs related to the scheme by the Mayor from a London local authority, by a London local authority from the Mayor or by a London local authority from another such authority.

(8) A scheme under this section may contain such supplementary provision as the Mayor considers necessary or expedient.

(9) The powers of the Mayor under this section are without prejudice to any other power of the Mayor under or by virtue of this Act to require any London local authority to provide information.

(10) For the purposes of this section “London local authority” means a London borough council or the Common Council.

CIS Schedule

The CIS schedule, which accompanies the signed contract, lays out what member organisations can expect from the CIS.

The Services to be provided by the CIS are:

- Support and advice – telephone support provided as well as by other means
- Training in software and other census issues – initially three person days training per borough per year
- Representation in negotiations and discussions with ONS on London's data needs
- Census Users Group meetings - quarterly
- Census Information Notes - quarterly
- GLA Census Website/Knowledge Hub forum or equivalent. Website to contain a wide range of content and functionality including census FAQs; latest news; forum; analysis; CINs; presentations/slides; contacts; data; publications etc.
- Seminars on specific topics – two a year
- Analysis – analytical reports similar to those produced from the 2001 Census. The content or topics to be discussed with boroughs and agreed at Census Users' Group meetings. A list of 2011 Census reports published to date is attached.

Within this framework of broad objectives the CIS endeavours to provide a responsive and tailored service based on the rapidly changing needs amongst member organisations. The Scheme will therefore comprise:

Analysis

- Prioritise those areas of analysis that members have previously identified as being of greatest interest: ethnicity, religion, housing, disability, population, commuting, languages spoken and profiles of new migrants
- Continue to provide a specially commissioned tables service and consult boroughs on requirements
- Develop data dashboards and data visualisations tools
- Provide information on the comparability of 2011 to 2001 census outputs
- Produce analytical publications to incorporate impacts of policy changes where possible

Training

- Future training should look at alternative delivery mechanisms such as online video training sessions, webinars
- Training that included a focus on analytical skills as well as making best possible and creative use of data
- Introductory, technical and definitional training would assist many who are new to the area of Census

Communications

- Improve communication channels to ensure boroughs are kept informed of Census developments
- Provide discussion groups on specific topics
- Produce a CIS annual report
- Develop further networking opportunities for members
- Encourage members presentations at CUG meetings highlighting local issues or analysis
- Submit responses to ONS consultations where appropriate
- Work with ONS on the Beyond 2011 project to ensure that London's unique data needs inform the future for population statistics

Events

Census User Group (CUG)

The Census User Group meets up to four times a year. These meetings are an opportunity for the CIS to present their recent work to members and to update members on news and issues relating to the Census. The meetings are also an opportunity for members to raise any queries or concerns they have and to take part in discussions with colleagues in other authorities on Census issues. The CIS held three Census User Group meetings in its third year:

- 12 March 2014
- 3 June 2014
- 15 October 2014

Meetings are well attended and all members are encouraged to send a representative. The papers, presentations and reports from the CUG meetings are all available on the Knowledge Hub for users to access. The community is private but open to any officers employed by member organisations. The website is <https://knowledgehub.local.gov.uk>.

CIS work within the GLA

As well as working closely with London boroughs the CIS team also work with policy teams inside the GLA providing census data and support services. The following three case studies, all from the last year, indicate the role the CIS plays internally within the GLA.

The Mayor and the London Assembly

The CIS often provides data to Members of the London Assembly and assists in answering questions raised at Mayor's Question Time.

In January the CIS was asked by the Assembly to contribute to a project to monitor the impact of policy interventions on diversity in London. Using 2001 and 2011 data relative diversity was assessed at community level (LSOA) across six domains including ethnicity, housing tenure, socio-economic group and age. These domains were then combined to create a composite indicator which showed the location of the most diverse areas and the direction of change over the ten years between the last two censuses. This work will be used as a baseline to monitor the impact of future policy decisions.

Cycling to work

In August the team worked with Andrew Gilligan, the Mayor's Cycling Czar, to produce a report on cycling to work in London. The report analysed the relationship between propensity to cycle to work and individual characteristics. The outcome was the identification of areas and communities where cycling to work is less popular and could potentially feed in to future targeted campaigns to increase cycling in London.

Characteristics of the Ultra-Low Emissions Zone

In November 2013 the CIS provided intelligence to TfL for an assessment of the demographics of the London Congestion Charge Zone. This work informed the equalities impact assessment for the proposed London ultra-low emissions zone (ULEZ). The team developed population and characteristics estimates of the population within the ULEZ and produced a briefing for TfL comparing that group to London as a whole. The team also provided an analysis tool to enable more detailed investigation of the data.

Training & Events

The CIS also provides members with training opportunities to enable them to make the best use of census data. In the past year training days and census presentations have been given in a number of London boroughs as well as to policy teams and networks within the Greater London Authority. Among the events over the past year were:

- Presentation to Camden & Islington PCT (3 October)
- Census Research User Conference (27 September)
- Presentation to Islington Senior Managers Forum (14 October)
- Beyond 2011 Consultation Event (22 November)
- Support for London Plan team at the Planning Inspectorate's Examination in Public of the Further Alterations to the London Plan (FALP) (September)

Beyond 2011

The formal consultation on proposals for producing population statistics and characteristics data for the next decade took place September – December 2013. GLA responded with a technical response detailing why a survey as proposed would not be a suitable vehicle to produce population characteristics data, why administrative data has some potential for enhancing population estimates and providing some attribute data and supporting the proposal to conduct a full Census in 2021 (primarily, but not exclusively, online). GLA also submitted a more political response. Drafts of both these documents were shared with CIS members. GLA also compiled information from CIS members on uses of Census data and the value to various organisations, which was submitted alongside these to support the submission to the Treasury for funding. In addition, the Mayor of London and the Leader of London Councils jointly sent a letter to the Minister for the Cabinet Office expressing their views, which supported the views in the GLA submissions.

As part of this consultation process, GLA officers also attended and contributed to meetings and roadshows at various venues and contributed to other submissions, such as that put forward by the Housing Statistics Network. Additionally, GLA represented London perspectives at an event to consider equalities implications of the various options in the consultation. GLA researchers and economists have also been working with ONS to provide evidence and methods for calculating the value of Census data to various organisations, again to support the funding case put to the Treasury.

The recommendations from the National Statistician and the Chair of the UK Statistics Authority in March 2014 reflected very closely the case put forward by the GLA, London Councils and many others to pursue investigations for extending the use of administrative data, alongside undertaking a full Census in 2021. In July 2014, the Government formally agreed with those recommendations.

As part of the ongoing collaboration with ONS, GLA officers were invited to attend a Research Conference in May. We heard about, commented on and contributed to discussions around the vast programme of research being undertaken not only at ONS, but worldwide, on issues around carrying out an electronic Census and pursuing the use of publicly held administrative data to produce both population estimates and characteristics.

GLA is continuing to work closely with ONS wherever possible towards ensuring that the future of small area population estimates and attribute data is assured, and particularly that issues affecting London are addressed.

Data Releases

The third year of the London Census Information Scheme saw the continued release of ONS 2011 Census standard outputs, an expansion of the commissioned tables service and the first origin-destination flow data releases. The scheduled release programme is now drawing to a conclusion and ONS aims to have all census data published by early 2015. The commissioned tables service will remain in operation indefinitely. The releases of 2011 Census to-date are as follows:

Date	Release Number	Tables	Geography
16 July 2012	1.1R	Population estimates (5-year age bands, sex, rounded) Household estimates Short-term migrant estimates	Local Authority
24 September	1.1U	Population estimates (single year, sex, unrounded)	Local Authority
23 October	1.2	Second address information	Local Authority
30 October	-	Statistical geography boundaries and lookups	Output Area, LSOA, MSOA
23 November	1.3	Population estimates (5-year age bands, sex, unrounded)	Output Area, LSOA, MSOA, Ward
11 December	2.1	36 Key Stats 7 Quick Stats	Local Authority
30 January 2013	2.2	36 Key Stats 69 Quick Stats	Output Area, LSOA, MSOA, Ward
19 February	2.3	36 Key Stats 69 Quick Stats	All other geographies
26 March	2.4	4 'AP' tables 3 Quick Stats	Local Authority
16 May	3.1	42 Detailed Characteristics tables	Local Authority
28 June	3.2a	Detailed Characteristics on housing Unit Postcode headcounts	Local Authority

12 July	3.2b	Detailed Characteristics from releases 3.1 and 3.2a	MSOA, Ward
31 July	4.1	Local Characteristics 21 tables on EILR	OA
30 August	3.3	Detailed Characteristics demography & families	MSOA, Ward
30 August	4.2	Local Characteristics health & unpaid care	Output Area, LSOA, MSOA, Wards
26 September	3.4	Detailed Characteristics communal establishments	MSOA, Ward
26 September	4.3	Local Characteristics migration	Output Area, LSOA, MSOA, Wards
31 October	5.1a	17 Alternate population on short-term residents	Local authority
31 October	5.1b	13 Alternate population on work-day population	Output Area, LSOA, MSOA, Wards, LAs
9 November	3.5a	Detailed Characteristics labour market	MSOA, Ward
19 December	3.5b	Detailed Characteristics qualifications	MSOA, Ward
23 January 2014	4.4a 4.4b	Local Characteristics on demography & families and housing	Output Area, LSOA, MSOA, Wards
26 February	4.5a 4.5b	Local Characteristics labour market & qualifications	Output Area, LSOA, MSOA, Wards
26 March	4.6	Local Characteristics Travel to work Car & van availability	LSOA, MSOA, Wards

26 March	3.5c	Detailed Characteristics Approx. social grade	MSOA, Ward
26 March	3.6	Detailed Characteristics travel to work Cars & vans	Local Authority
9 April	Supp 1	Local Characteristics tables	OA
23 May	5.2a	32 Workplace population	21 for Workplace Zones 10 MSOA, 1 OA
23 May	5.2b	9 Workday population	6 for MSOA 3 for OA
23 May	Supp 2	Local Characteristics tables Detailed Characteristics tables	Various
23 May	6.1a	Migration Statistics for Wales	MSOA, merged wards, LA
23 May	6.2	Armed Forces Statistics	LA's with armed forces populations >150
25 July	OD 1a	Origin-destination statistics Migration, students and workplace	LA
25 July	OD 1b	Origin-destination statistics second residence and workplace	MSOA
9 September	Supp 3	Additional tables 6 Detailed Characteristics 10 Local Characteristics 1 Quick Statistics 1 Workplace Statistics	Various
24 September	6.3	Out of term population	20 at OA 1 at MSOA

Commissioned tables

The CIS has been proactive in commissioning non-standard output from the 2011 Census. Requests for bespoke tables can result from a number of sources:

GLA demography team – GLA population projections require a number of non-standard census outputs and these were among the first tables commissioned

Providing greater detail for London – Some detailed tables which are deemed disclosive at small geographies can be produced for areas in London because of the greater size of diverse community groups.

Member requests – These can take the form of request from local authority members as well as internal GLA departments and often result from data requirements for specific projects.

To date the GLA has commissioned 24 tables of which eight have been delivered at a total cost of £5,600. The majority of these were commissioned in this reporting year (October 2013-September 2014): 17 tables at a cost of £4,300. A full list of tables commissioned by the CIS to date is as follows:

Number	Description	Geography	Cost	Date Requested	Date Delivered
CT0045	Method of Travel to Work (alternative)	Wards in England and Wales	£100	13-Mar-13	14-Apr-13
CT0048	Country of Birth (most detailed)	London Boroughs	£100	02-Apr-13	20-May-13
CT0060	Passports held (detailed)	London LSOAs	£100	14-Jun-13	27-Jun-13
CT0061	National Identity	London LSOAs	£100	14-Jun-13	27-Jun-13
CT0088	Religion (190 split)	London LSOAs	£100	27-Aug-13	03-Sep-13
CT0082	Household type by number of dependent children	London Boroughs	£500	02-Jul-13	09-Aug-13
CT0089	One person households - employed full-time / part-time	London Boroughs	£300	02-Jul-13	20-Aug-13
CT0122	sya by sex by ethnic group	London Boroughs	£100	25-Oct-13	17-Feb-14
CT0123	sya by sex by	London	£100	25-Oct-13	17-Feb-14

	marital status	Boroughs			
CT0124	sva (18-34) by sex by (student) accom type	London Wards	£300	25-Oct-13	17-Feb-14
CT0164	age by sex by ethnic group EA 16+	London Boroughs	£100	17-Jan-14	17-Feb-14
CT0223	sex by age (18+) by EA	London Wards	£300	17-Jan-14	07-April-14
CT0224	sex by age by unpaid care by health	EW merged LAs	£300	24-Dec-13	04-April-14
CT0225	sex by age by detailed ethnic group	London Wards	£300	24-Dec-13	10-Sept-14
CT0226	detailed country of birth	London Wards	£300	24-Dec-13	10-Sept-14
CT0227	age by type of central heating	EW wards	£300	24-Dec-13	04-April-14
CT0228	Tenure by age by general health by long-term health problem or disability	EW merged LAs	£300	24-Dec-13	25-Sept- 14
CT0229	sex by age by ethnic group by EA	London Boroughs	£300	24-Dec-13	07-Apr-14
CT0230	occ rating (bedrooms) by bedrooms by tenure	EW merged LAs	£300	24-Dec-13	04-April-14
CT0231	occ rating (bedrooms) by Sex by age by ethnic group of HRP	EW merged LAs	£300	24-Dec-13	25- Sept- 14
CT0257	Age by accommodation type by number of bedrooms	EW merged LAs	£250	02-May-14	22-Aug-14
CT0258	Age by tenure by number of bedrooms	EW merged LAs	£250	02-May-14	22-Aug-14
CT0278	Accommodation type by number of bedrooms	London OAs	£250	02-May-14	22-Aug-14
CT0279	Tenure by number of bedrooms	London OAs	£250	02-May-14	22-Aug-14

Tables requested by the GLA but not yet received

Table content	Geography	Date requested
Country of Birth (HRP)(most detailed) by Econ Act	Boroughs	July-14
Country of Birth (HRP)(most detailed) by Religion	Boroughs	July-14
Country of Birth (HRP)(most detailed) by disability, health, care	Boroughs	July-14
Country of Birth (HRP)(most detailed) by Industry	Boroughs	July-14
Country of Birth (HRP)(most detailed) by Hhold comp	Boroughs	July-14
Country of Birth (HRP)(most detailed) by rooms bedrooms	Boroughs	July-14
Country of Birth (HRP)(most detailed) by tenure	Boroughs	July-14
Age by tenure by number of bedrooms	bespoke area	17-Sept-14
migrants to London wards by age by sex	London wards	17-Sept-14
migrants from London wards by age by sex	London wards	17-Sept-14
International migrants to London boroughs by age and sex	Boroughs	17-Sept-14
UK migrants to London boroughs by age and sex	Boroughs	17-Sept-14
migrants from London boroughs to RoUK by age and sex	Boroughs	17-Sept-14
migrants within London authorities by age and sex	Boroughs	17-Sept-14
all migrants to London by age by sex	Boroughs	17-Sept-14
all migrants from London (to Rest of UK) by age by sex	Boroughs	17-Sept-14

Work plan

The priorities of the Census Information Scheme team at the GLA is reviewed on an on-going basis to allow for changes to ONS release schedules and evolving member priorities. The broad analytical objectives, the framework within which work planning decisions are taken, are outlined in the CIS Schedule section of this report. Short and medium-term analytical priorities are subject to change, but as of October 2014 the following projects have been identified:

- Development of an updatable Output Area Classification for London
- CIS briefings and updates:
 - Dependent children & families
 - Main language & English proficiency
 - Qualifications
 - Tools and data visualisations to support and enhance the analytical priorities listed above
- Analysis of origin-destination datasets
- Work to support and inform the GLA population projections methodology
- Work with policy leads within the GLA to identify critical areas for research

London Output Area Classification

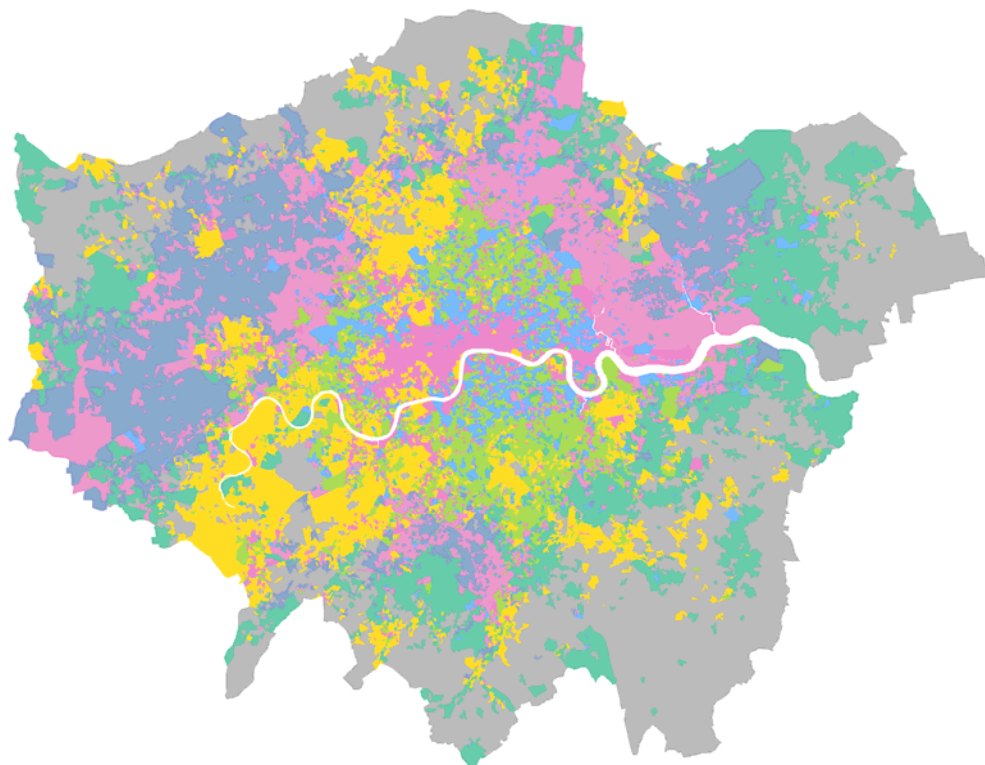
One of the work plan aims identified for the 2013-14 year for the CIS was to look into the feasibility of developing an area-based classification for London.

In October 2013 the ONS produced an interim output area classification for England & Wales using census data. Internal analysis within the CIS of this classification indicated that while it was effective in marking out London as different from much of the rest of the country it was poor at identifying difference within the capital. Based on this assessment the CIS put together a proposal for commissioning a London-specific classification.

The project was undertaken by the same team at University College London which produced the ONS classification. An advisory group made up of representatives from three London Boroughs was brought together to help oversee the development of the classification and ensure that the output were fit for purpose.

The model incorporated 60 variables across five domains (demography, housing, households, socio-economic, employment) and produced a classification of eight super groups containing 19 groups and 48 sub groups. This typology will be used for a range of purposes including as benchmarking and identify 'nearest statistical neighbours'.

A full public release of the London Output Area Classification (LOAC) is scheduled for late October 2014 and our hope is that both public sector and private users will be able to make use of this interesting and versatile dataset.



LOAC super group classification distribution

Copyright: London Census Information Scheme

SASPAC

SASPAC is a software tool for storing, extracting and manipulating complex datasets. It is owned by the Local Government Association and managed by the Greater London Authority. Members of the Census Information Scheme consortium are provided with the software, an organisational licence, census datasets, helpdesk support and training (at City Hall or on location), as part of the consortium agreement.

In the past year 30 individuals from London boroughs have taken a SASPAC training course while over the course of the scheme 126 individuals from 29 London Borough have received training.

The training programme continues to be developed and the release of more complex datasets affords the opportunity for more advanced courses. Users with specific training needs are encouraged to contact the SASPAC Helpdesk to discuss bespoke courses.

For more information contact info@saspac.org

or visit <http://www.saspac.org>.



Financials

	2010-11	2011-12	2012-13	2013-14	Total	2014-15 (to Oct 13)
	£	£	£	£	£	£
Income	0.00	527,054.92	155,000.00	0.00	682,054.92	0.00
Expenditure	0.00	-2,487.87	-30,642.41	-100,284.00	-133,414.20	-68,928.00
Transfer to Reserve	0.00	524,567.05	124,357.59	-100,284.00	548,640.64	479,712.64
CENSUS RESERVE					548,640 .64	

If you require further details of the Census Information Scheme budget please contact the CIS at census@london.gov.uk.

List of 2011 Census CIS Reports

Briefings

- CIS2012-01 2011 Census first results: London boroughs' populations by age and sex
- CIS2012-02 2011 Census quality assurance: London boroughs' response rates
- CIS2012-03 2011 Census quality assurance: The estimation process
- CIS2013-04 Diversity in London
- CIS2013-05 NS-SEC in London
- CIS2013-06 Trends in Housing Tenure
- CIS2013-12 Schoolchildren and full-time students at their non term-time
- CIS2013-13 Family Type
- CIS2014-02 Car and Van Availability
- CIS2014-03 Communal Establishments
- CIS2014-09 Hours Worked
- CIS2014-10 Migration flows

Snapshots

- CIS2012-04 Ethnic Diversity Indices
- CIS2012-05 Country of birth
- CIS2012-06 Housing
- CIS2012-07 Labour Market
- CIS2012-08 Religion
- CIS2012-09 Health and unpaid care in London boroughs
- CIS2012-10 Household Language
- CIS2012-11 Passports held
- CIS2012-12 Households and Families
- CIS2012-13 Detailed Country of birth, Passports held and National Identity
- CIS2013-01 Main Language
- CIS2013-02 Ethnic Diversity Indices for wards
- CIS2013-03 Short-term residents
- CIS2013-07 Detailed Ethnicity by Age Groups in London

CIS2013-08	Londoners born overseas, their age and year of arrival
CIS2013-09	Greater London Assembly Constituency Profiles
CIS2013-10	Economic Activity in London
CIS2013-11	Housing Characteristics
CIS2013-14	Housing Tenure by Economic Activity
CIS2013-15	Household Composition
CIS2013-16	Characteristics of the London Congestion Charging Zone
CIS2013-17	Tenure by NS-SeC
CIS2014-01	Overcrowding and Under Occupancy in London
CIS2014-04	A 2011 Output area Classification for London
CIS2014-05	Mixed and Balanced Communities
CIS2014-06	Ethnic Group Fact Sheets
CIS2014-07	Distance Travelled to Work
CIS2014-08	Local Areas of Ethnic Group Concentration
CIS2014-11	Cycling to work in London
CIS2014-12	Key Findings for London from the 2011 Census

Release Summary Documents

Origin-Destination:	Migration flows
Origin-Destination:	Travel to work flows
Release 5.2a:	Workplace population
Release 3.5b:	Qualifications
Release 5.1a:	Short-term residents
Release 3.2b:	Health & Disability
Release 3.2a:	Housing
Release 3.1:	Diversity

GLAINTELLIGENCE

Greater London Authority
City Hall
The Queens Walk
London SE1 2AA

Tel 020 7983 4922
Fax 020 7983 4674
Minicom 020 7983 4000
Email census@london.gov.uk

<http://data.london.gov.uk/census>

