

GLA demographic projections

Population Statistics User Group

22 July 2024



Contents

- 2022-based projections
- GLA BPO projection service
- 2023-based projections
- Release schedule



2022-based projections

- Production
- Changes from 2021-based
- Planned outputs



Production

- Planned release Dec 2023

Production

- Planned release Dec 2023
- All inputs delayed
- 2022 Mid-Year Population Estimates
 - June 2023 → **23 Nov 2023**
- Small area estimates 2021 and 2022
 - Sept 2023 → **19 Mar 2024**
- Mid-2022 LSOA births and deaths
 - Oct 2023 → **30 Apr 2024**
- Rebased small area back series
 - Sept 2023 → **Nov 2024**

Production

- Planned release Dec 2023
- All inputs delayed
- Production started 1 May 2024
- 2022 Mid-Year Population Estimates
 - June 2023 → **23 Nov 2023**
- Small area estimates 2021 and 2022
 - Sept 2023 → **19 Mar 2024**
- Mid-2022 LSOA births and deaths
 - Oct 2023 → **30 Apr 2024**
- Rebased small area back series
 - Sept 2023 → **Nov 2024**

Production

- Planned release Dec 2023
- All inputs delayed
- Production started 1 May 2024

complication



- 2022 Mid-Year Population Estimates
 - June 2023 → **23 Nov 2023**
- Small area estimates 2021 and 2022
 - Sept 2023 → **19 Mar 2024**
- Mid-2022 LSOA births and deaths
 - Oct 2023 → **30 Apr 2024**
- **Rebased small area back series**
 - **Sept 2023 → Nov 2024**

Production

- Planned release Dec 2023
 - All inputs delayed
 - Production started 1 May 2024
 - Projections ready for use in SRP* service 9 May
- 2022 Mid-Year Population Estimates
 - June 2023 → **23 Nov 2023**
 - Small area estimates 2021 and 2022
 - Sept 2023 → **19 Mar 2024**
 - Mid-2022 LSOA births and deaths
 - Oct 2023 → **30 Apr 2024**
 - Rebased small area back series
 - Sept 2023 → **Nov 2024**

**School Roll Projection*

Production

- Planned release Dec 2023
 - All inputs delayed
 - Production started 1 May 2024
 - Projections ready for use in SRP service 9 May
 - Publication on hold during peak service delivery period*
- 2022 Mid-Year Population Estimates
 - June 2023 → **23 Nov 2023**
 - Small area estimates 2021 and 2022
 - Sept 2023 → **19 Mar 2024**
 - Mid-2022 LSOA births and deaths
 - Oct 2023 → **30 Apr 2024**
 - Rebased small area back series
 - Sept 2023 → **Nov 2024**

**May to late July*

Production

- GLA created [modelled back series](#) for use in the projections
- ONS rebased MYE back series not suitable
 - Too much past change not accounted for by standard demographic components*
 - No rebased series of small area estimates available

*ONS include a pseudo-component/adjustment labelled *unattributable population change*

Changes from 2021-based Fertility

- Previous: applied NPP changes* to starting rates
- Now: hold 2023 rates constant
- 2023 rates based on [nowcast estimates](#)
- Variants conservative – cover ~5% range

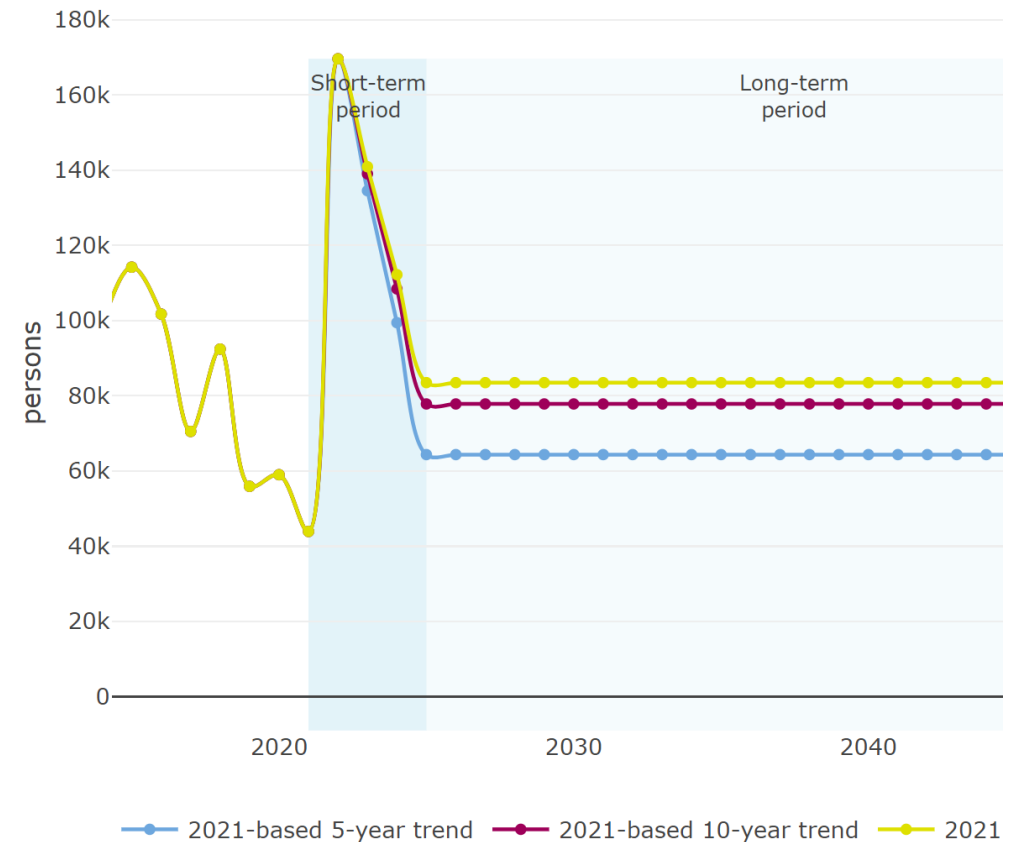


*changes to age specific fertility rates from the ONS National Population Projections

Changes from 2021-based Migration

- Previous: explicit short and long-term assumptions to reflect Covid recovery
- Now: 2023 international flows modified to account for provisional UK data (+670k)
- Subsequent levels based on average of past flows

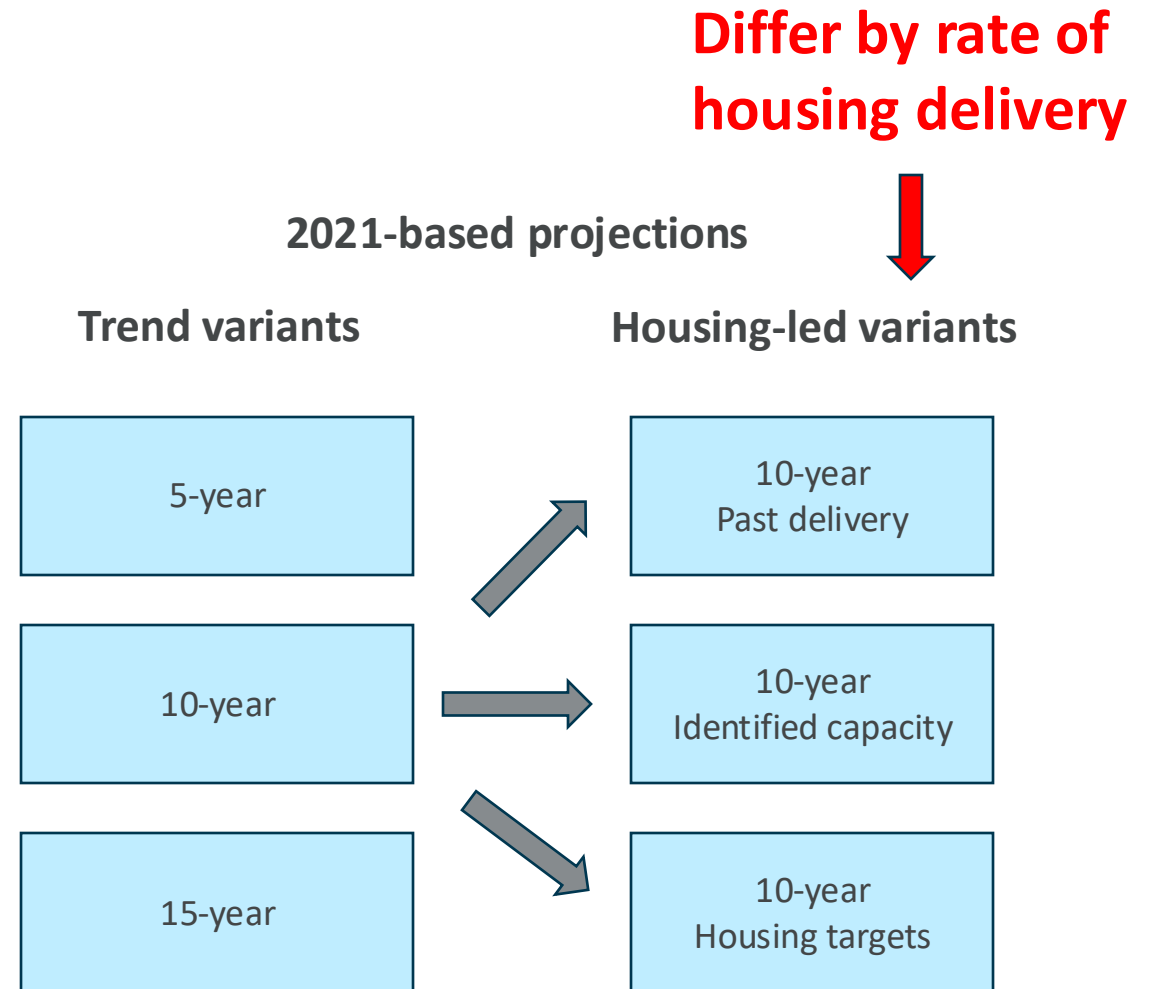
Figure 5: Net international migration, London



Planned outputs

2021-based variants

- Trend: 3 periods past migration
- Housing-led: 3 different trajectories



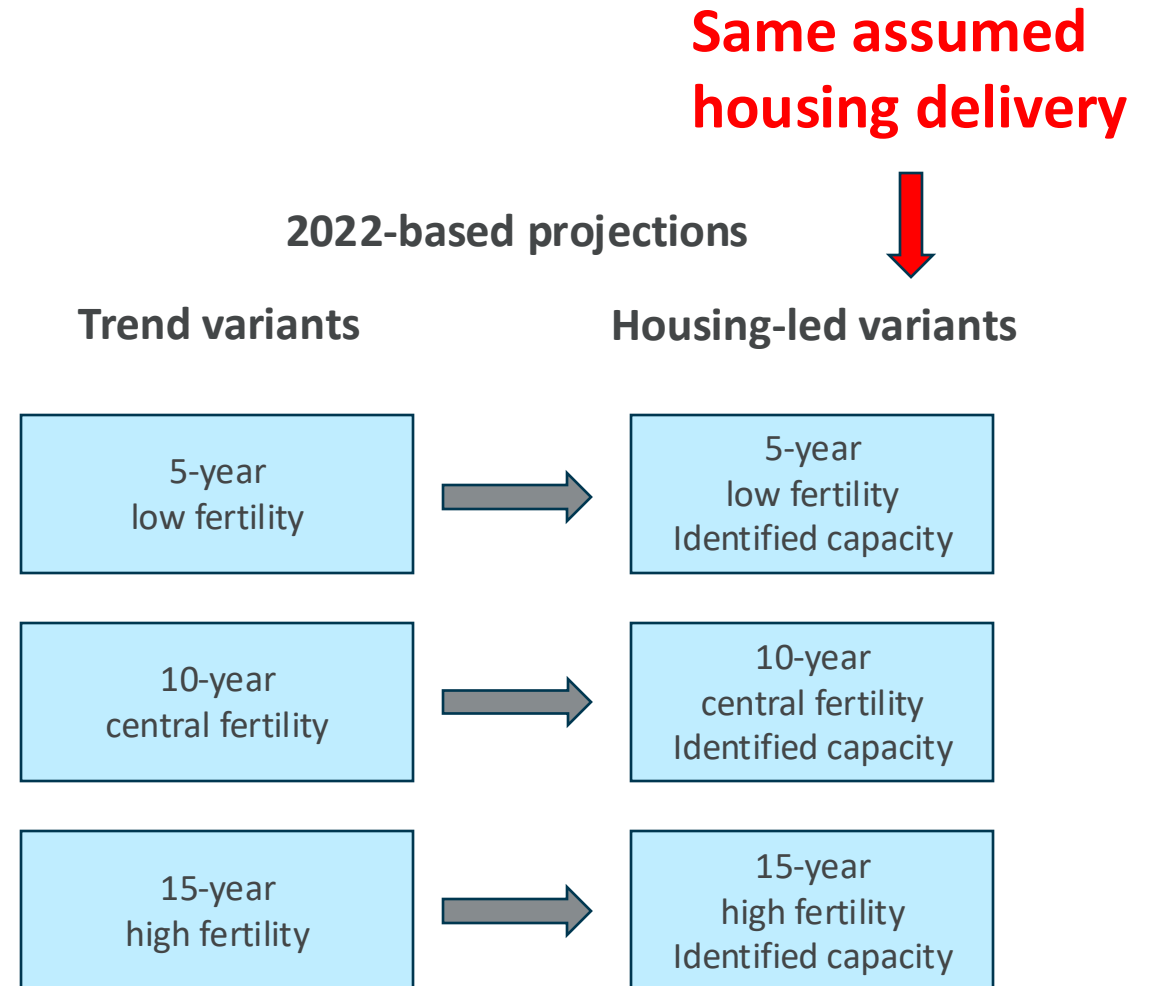
Planned outputs

2021-based variants

- Trend: 3 periods past migration
- Housing-led: 3 different trajectories

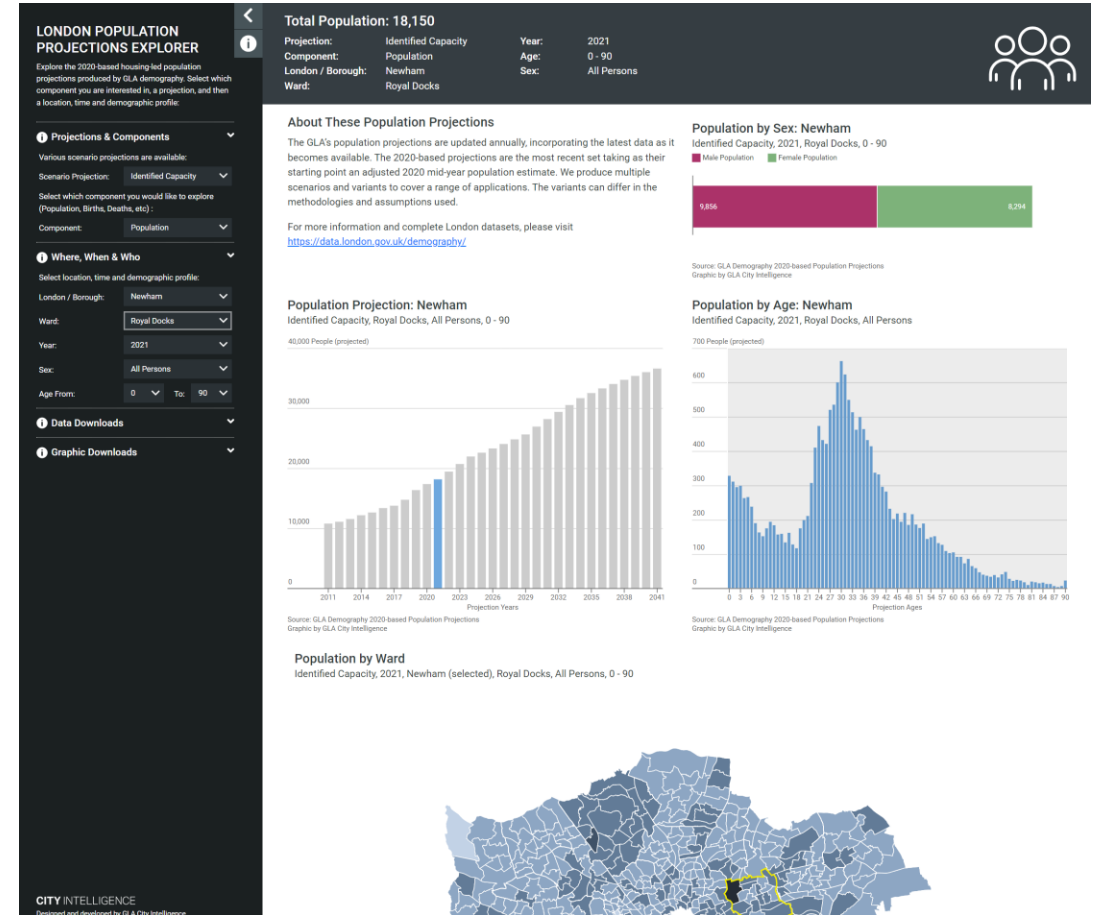
2022-based variants

- Trend: 3 periods past migration and levels of fertility
- Housing-led - 3 periods past migration and levels of fertility, same trajectory



Planned outputs

Replacement/Update of Projections Explorer tool



GLA population projection service

2022-based BPO* projections available on request

- Latest templates and guidance on the [London Datastore](#)
- Doing away with:
 - Annual mailout requesting data
 - Deadline for submissions

Welcome feedback on how service fits your needs

Looking at potential of new [SHLAA Tool](#) to streamline process

**Borough Preferred Option*



GLA 2023-based projections



2023-based projections

Planned work:

- Publish interim projections
- Review methods for projecting fertility
- Optimise housing-led model
- Develop new Household Projection Model



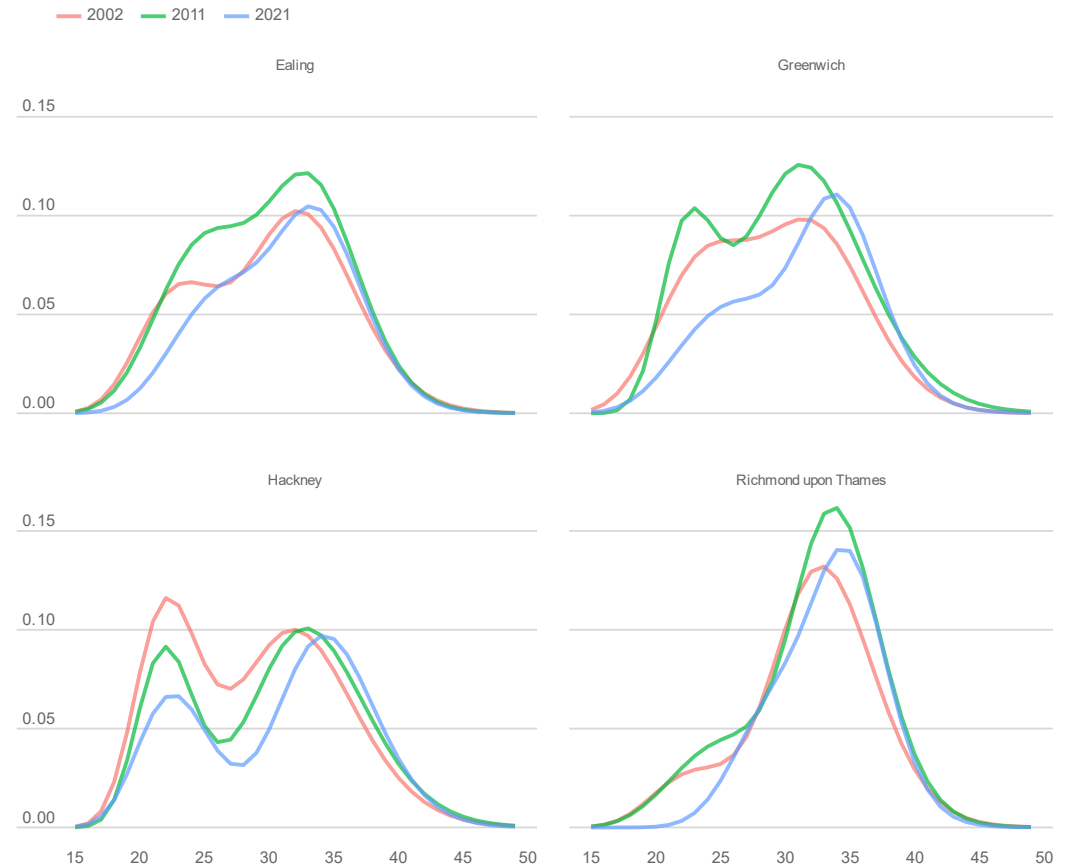
Interim projections

- Stop-gap/baseline for full projections
- Update models to incorporate 2023 MYE data
- Model missing 2023 internal migration flow data
- Use same methods as 2022-based

Review methods for projecting fertility

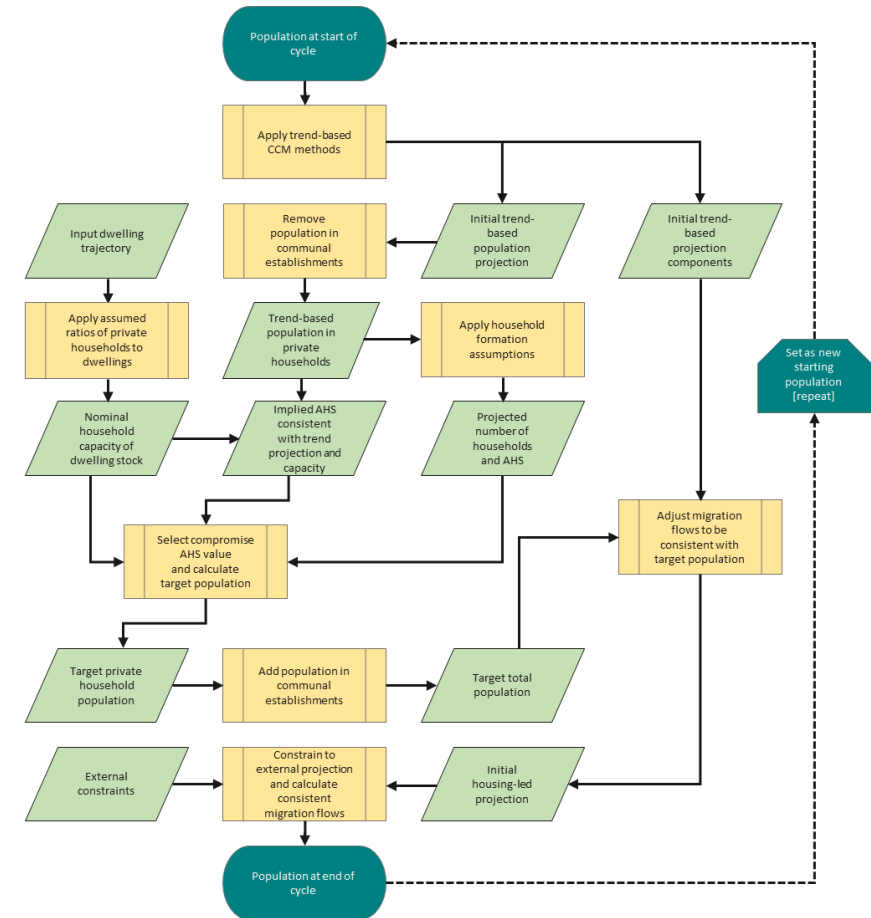
- Previously: limited data to work with
- Now: 20-years of births by age of mother
- Unlocks options for projecting future rates

Age Specific Fertility Rates



Optimise housing-led model

- Many moving parts – results sensitive to set up
- Use retrospective forecasts to inform configuration choices





New Household projection model

- Previously adopted ONS/DCLG models
- Superseded by 2021 Census results
- Need updated model for use in London SHMA*
- Can't wait for next official projections

*Strategic Housing Market Assessment



Release schedule: GLA

- 2022-based population projections
 - Local Authority and Ward outputs – July 2024
 - Updated projection explorer tool – Aug/Sept 2024
 - MSOA outputs – TBC
- 2023-based population projections – Nov 2024
 - Interim outputs – Aug 2024
- 2023-based household projections – Dec 2024

Release schedule: ONS

- 2022-based [National Population Projections](#) - Oct/Nov 2024
- 2022-based [Subnational Population Projections](#) - Feb/Mar 2025
- 2022-based [Household projections](#) – Apr/May 2025



demography@london.gov.uk

ben.corr@london.gov.uk