

The Parks

The Community Consultation

The life that we are expecting in Leven Road Open Space and Braithwaite Park is derived from detailed consultation by LBTH Parks Team and Aberfeldy Big Local over 3 stages since September/October 2020. The following description explains the engagement process and ambition for the green spaces as expressed by the community.

Stage One Consultation (late summer/autumn 2020)

Consultation was carried out by LBTH during the late summer and autumn of 2020. It included interviews with residents in the green spaces: Millennium Green, Leven Road Open Space (LROS) and Braithwaite Park as well as seeking input from local organisations. This Design and Access Statement does not cover Millennium Green as it is outside the boundary of this detailed planning application but will be improved subject to a S106 Agreement.

The feedback focussed on general issues such as the problem of anti-social behaviour and the need to improve maintenance in general, but also articulated the diverse ambition and preferred use for the spaces that will make each one distinct but complementary

Stage Two Consultation (April/May 2021)

The second stage was to create options for each of the green spaces based upon what the community had said, urban context, plot circumstances and the needs of connectivity between the green spaces. The options related to individual elements of the green spaces rather than different holistic options for each individual space.

Stage Three Consultation (July/August 2021)

The Third stage evaluated the feedback from the Stage Two Consultation in order to develop and illustrate a final sketch proposal, with visualisation, showing general spatial layout and indicative materials, for a further round of consultation to validate the proposal. This also enabled the existing green spaces to be coordinated with the new public spaces being created within the Aberfeldy New Masterplan and Poplar Riverside. Feedback supported much of the proposals but led to some refinements which have been incorporated into the proposals that are being submitted. The refinements for Leven Road were related to the design and development of the gym spaces. In Braithwaite Park refinements included reducing the ornamental horticulture in favour of lawn to provide more informal play space as well as increasing the tree cover around the boundaries and entrances.

Work with school children



Leven Road Open Space - Public consultation board 1



Leven Road Open Space - Public consultation board 2



Braithwaite Park - Public consultation board 1



Braithwaite Park - Public consultation board 2

The Parks

The Community Consultation

Integrated with this process was a specific engagement with the school children of Culloden Primary School and Langdon Park School. This included exploration of their neighbourhood, commenting on what is important and how it could be improved. They developed a manifesto for the public realm of the masterplan, which the park proposals respond to, as well as critiquing the specific design proposals.

Overarching Principles for the improvement of the parks

Based on the consultation a number of overarching principles were established for the improvement of all the parks and the linkages between them:

- The proposals should change spaces and be aspirational.
- Improve the movement and connectivity between plots. Make it visible, safe, transparent to draw people from one park to the next.
- Improve nature and biodiversity.
- Avoid ASB hot spot creation: consider visibility and permeability.
- Explore softening boundaries with greenery.
- Consider the need for fencing around each park in the context of their function and design.
- The improvements must be inclusive and for all ages – children, teenagers adults and the old as well meeting the needs of the widest range of society possible.
- Create thematic routes that connect the different green spaces.
- Consider selected locations for drinking water fountains.
- Ensure a space for events and community activities is included (this is Millennium Green which is not covered by this detailed application.

Leven Road Open Space community aspirations:



Langdon Park Secondary School pupils - Session 02 - Aberfeldy walking tour



Flags placed by the students showing how they rated their local area



A student at Braithwaite Park completing the worksheets

The Parks

Consultation Process

The Advisory Group

Throughout and following the public consultation work LDA Design coordinated a series of meetings with the The Advisory Group, comprising representatives from LBTH and Aberfeldy Big Local to review the public space proposals and public consultation material.

The most recent of these meetings were held in August 2021 with Alice Bigelow (Interim Parks Manager at LBTH) and Eleanor Image (Aberfeldy Big Local) to review how the July 2021 public consultation comments were being addressed through the design of the parks within the Phase A detailed planning application. See diagrams overleaf to illustrate the key design moves for both parks responding to comments from the public. Also discussed at this meeting was a discussion on lighting the parks and (fenced) dog area provision.

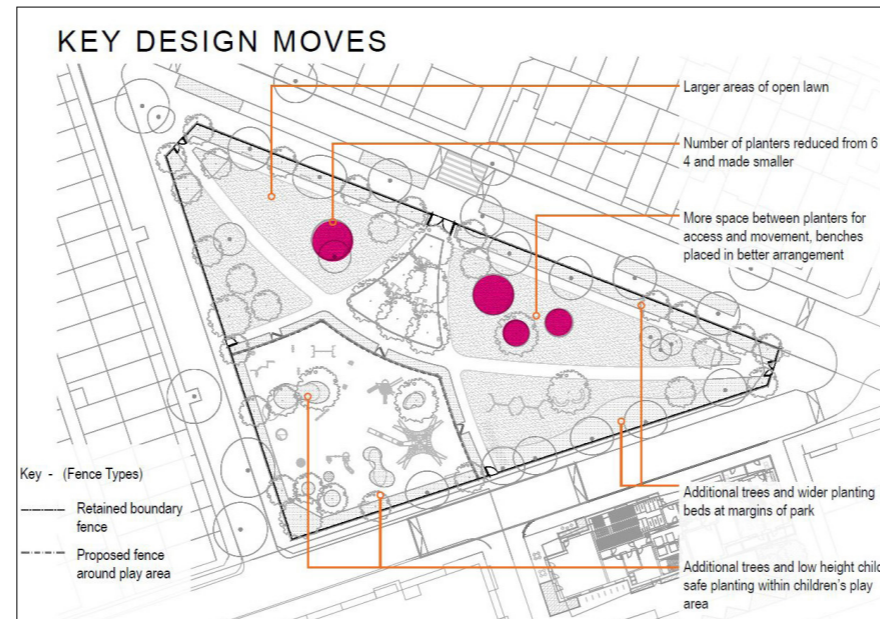
Detailed proposal meetings with London Borough of Tower Hamlets

The Advisory Group advised us to organise some focused Hardworks and Softworks feedback sessions with the specialist management and maintenance teams from LBTH to fully review the proposals in detail.

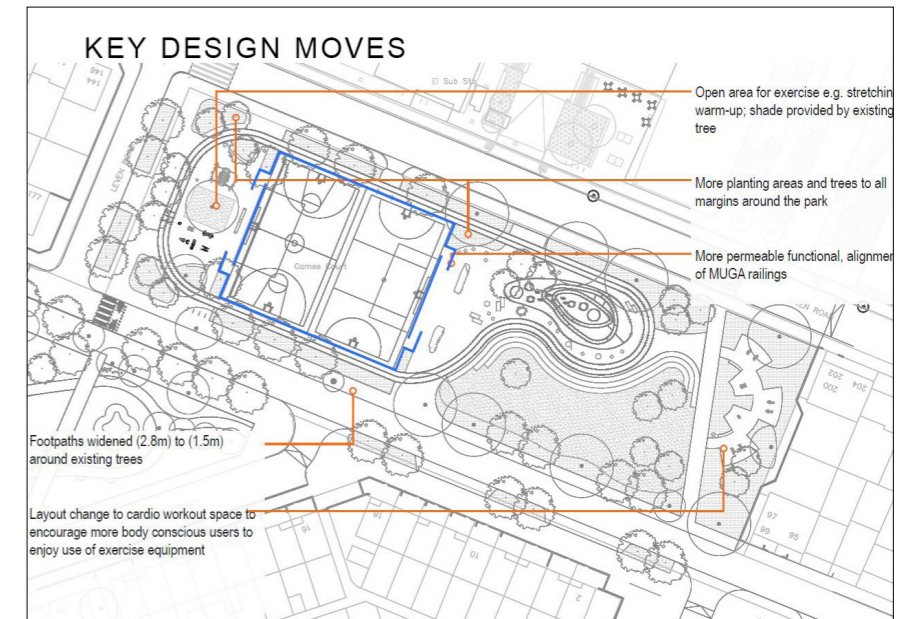
Information and meeting invitations were circulated to the wider parks team at LBTH with the following individuals available to attend our for feedback on the proposals in September 2021;

- | | |
|----------------|---|
| John Archer | Biodiversity Officer at LBTH |
| Matthew Twohig | Green Team (maintenance) at LBTH |
| Lesley Pearce | Green Team (maintenance) at LBTH |
| Adam Armstrong | Arboriculture Officer at LBTH |
| Mohammed Raja | Parks Development Officer – Community at LBTH |
| Paul Sammut | Parks Manager at LBTH |

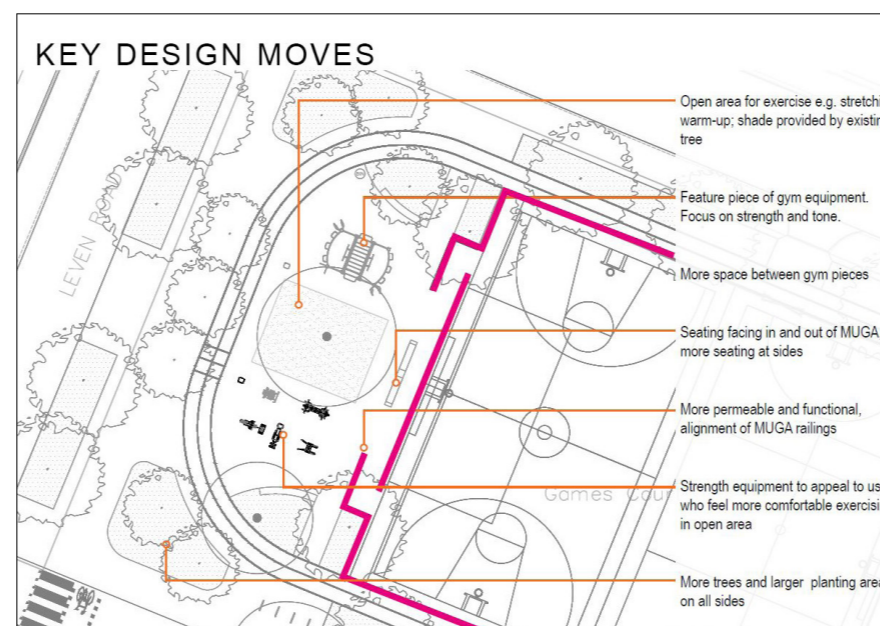
Information on the content addressed in these meetings is supplied overleaf.



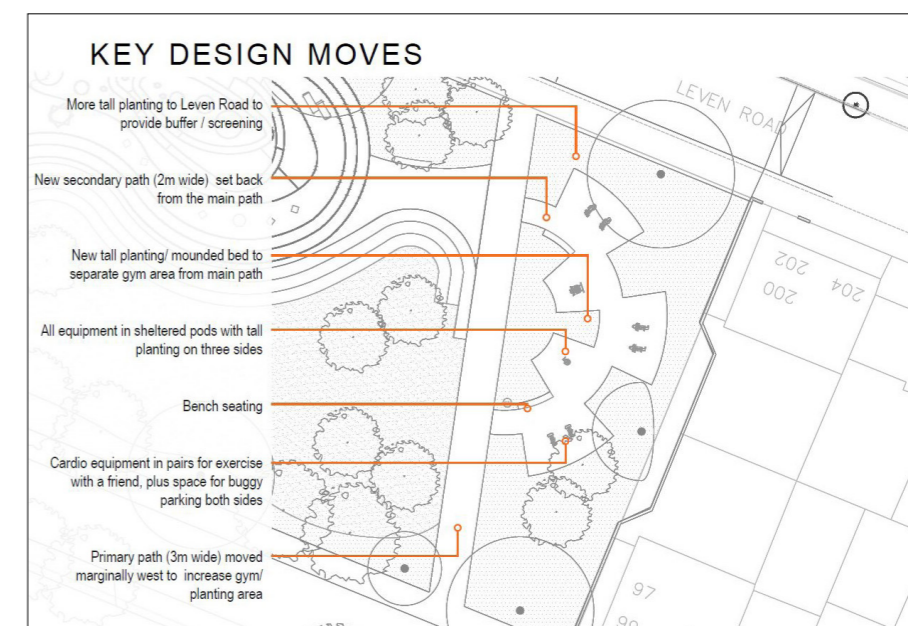
Braithwaite Park - Key Design Moves under review



Leven Road Open Space - Key Design Moves under review



Leven Road Open Space- Strength fitness area - Key Design Moves under review



Leven Road Open Space- Cardio fitness area - Key Design Moves under review

The Parks

Consultation Process

Softworks Focus Meeting with LBTH

The following items were addressed in this meeting;

- Overview of wider masterplan and Green connections
- Overview of proposals for both parks
- Proposed detailed elements requiring your expertise:
- Tree removal and retention plan
- Proposed tree planting
- Proposed tree species
- Proposed planting typologies
- Proposed planting palettes
- Maintenance

Hardworks Focus Meeting with LBTH

The following items were addressed in this meeting;

- Overview of wider masterplan
- Play and Open space provision scheme requirements
- Overview of proposals for both parks
- Proposed detailed elements requiring your expertise:
- Proposed hardworks
- Proposed furniture
- Proposed play equipment
- Proposed gym equipment
- Proposed edge types
- Maintenance

At the end of each session there was opportunity to raise any other items attendees would expect to see included in application not yet covered in the discussions. The feedback from these sessions was very helpful and we have adopted the suggestions made through the proposals for each park, as documented within this document.



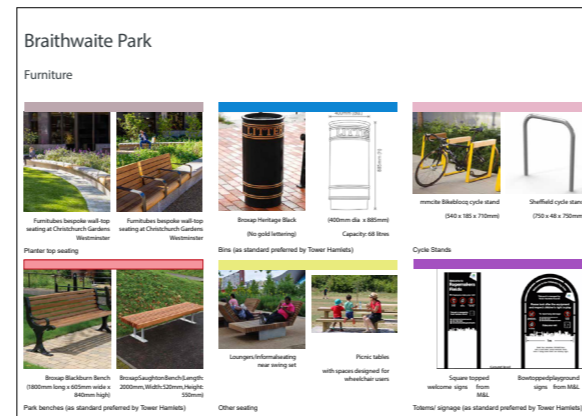
Tree strategy under review



Braithwaite Park - Softworks under review



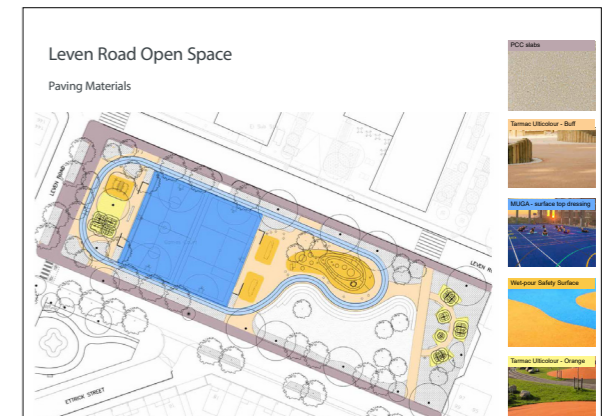
Leven Road Open Space - Softworks under review



Street furniture strategy under review



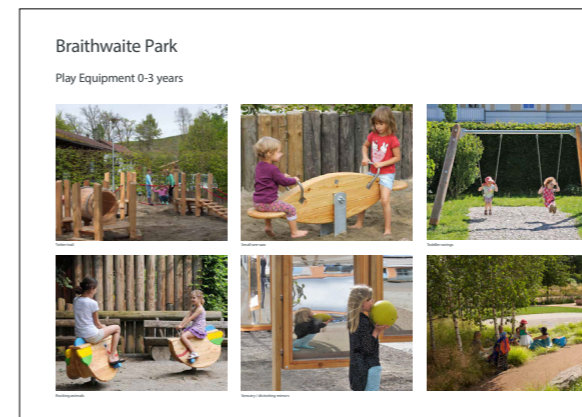
Braithwaite Park - Surface Finishes under review



Leven Road Open Space - Surface Finishes under review



Braithwaite Park -Play park equipment under review



Braithwaite Park -Play park equipment under review



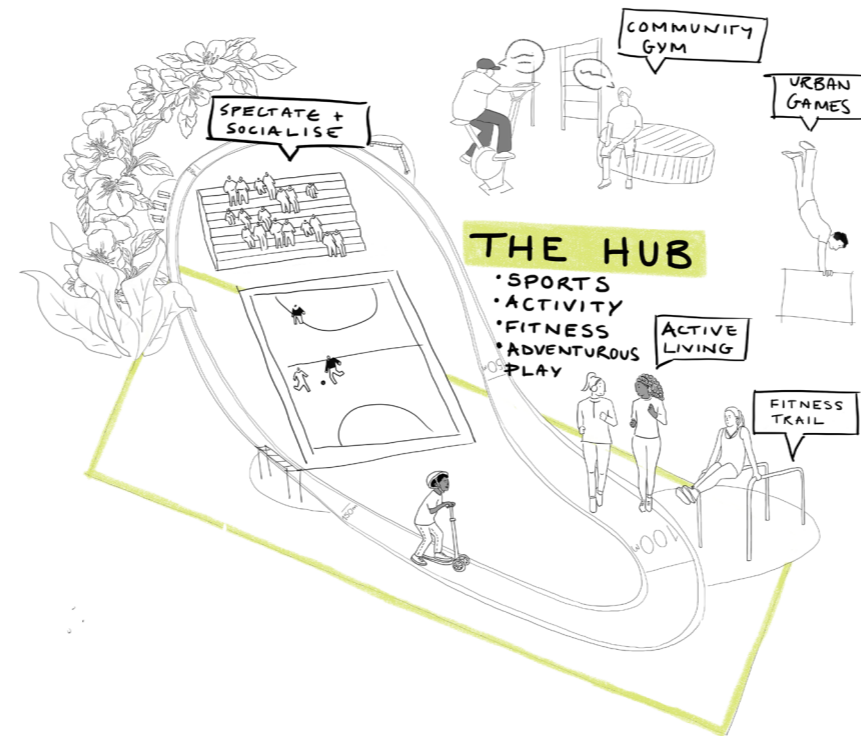
Braithwaite Park -Play park equipment under review

The Parks

The Life and Character of the Parks

Leven Road Open Space

The character and life of Leven Road Open Space is a 'Hub' for sporting, fitness and adventurous play: retain the existing MUGA, add complementary fitness equipment, create more seating and socialising opportunities, improve connections across Leven Road to neighbouring green spaces and include more accessible equipment.



The community aspirations:

- More and better exercise space including improvement to the MUGA
- Play
- More social opportunity associated with exercise
- Rest areas as part of the structure of the space
- Seating
- Security
- Cleanliness

Braithwaite Park

The character and life of Braithwaite Park is as a neighbourhood garden square with a mix of activity from play (formal and informal), picnics, walks, relaxation, socialising, in a sensory garden environment of flowers and habitat. A place for everyone to enjoy.

The design for each of the parks is described in subsequent sections.



The community aspirations:

- A significant children's play area with a good range of play equipment
- Space for informal play such as good lawn
- Flowers and improved planting and maintenance – more garden like
- Plenty of seating and resting areas for sociability
- Security
- Cleanliness

The Parks

Greenspace Context





The improvement of Leven Road Open Space and Braithwaite Park have been considered within the context of the Aberfeldy Village Masterplan and the other green spaces of Aberfeldy, existing and proposed.

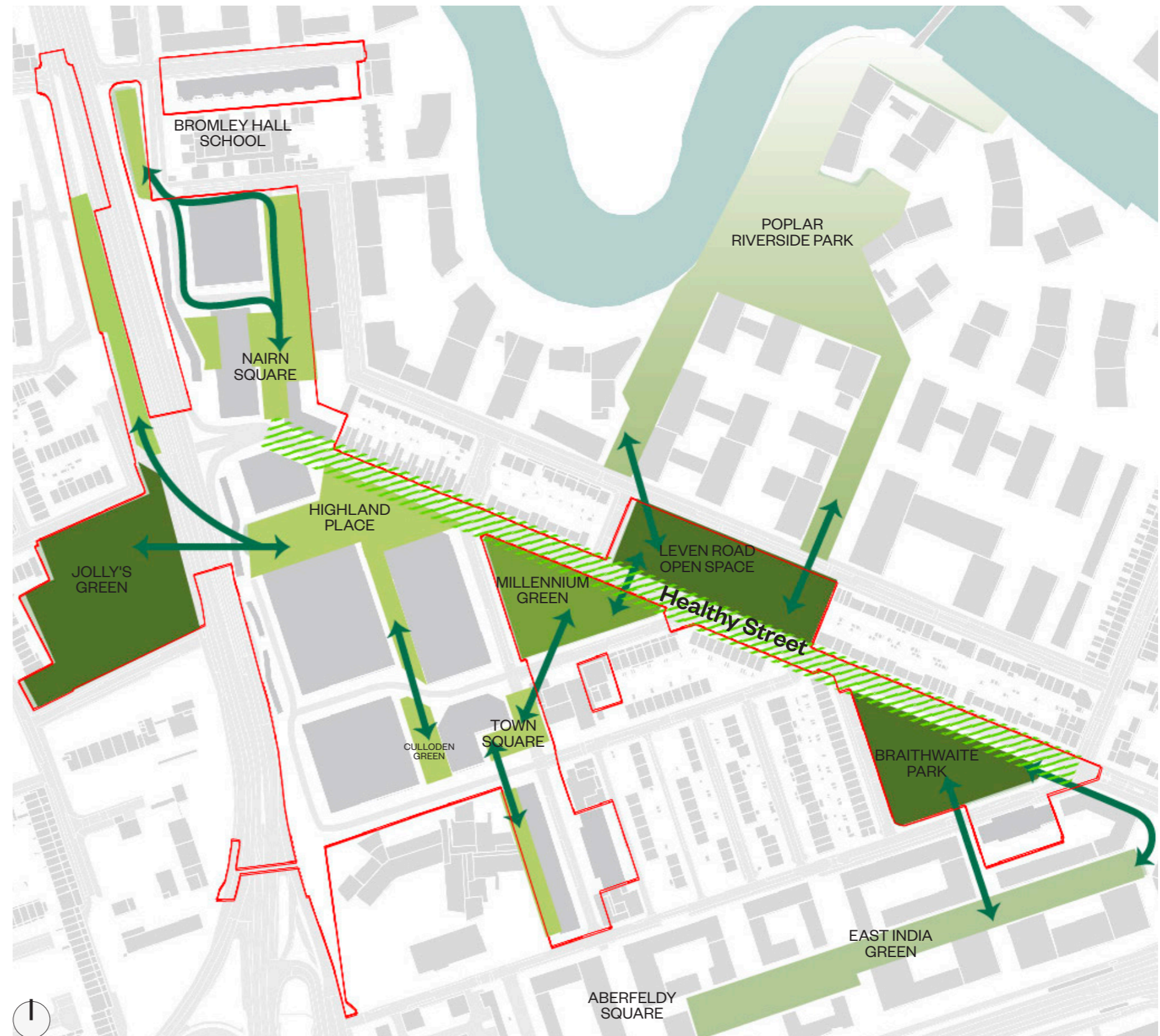
Aberfeldy is poorly served by usable high quality green space. There are just the four modest sized, low quality, poorly connected green spaces: Millennium Green, Leven Road Open Space, Braithwaite Park and Jolly's Green.

The green space potential is considerable, however. In addition to the regeneration of those four parks, the very popular East India Green was created as part of the first phase of the Aberfeldy Village Masterplan, the outline application includes a new park space in Highland Place, new green spaces in the Community Lane and a new vision for Jolly's Green. The Poplar Riverside development also includes a significant new park. Each of these green spaces has a distinct and complementary role:

- Leven Road Open Space is an exercise and fitness hub
- Braithwaite Park a neighbourhood garden with play
- Millennium Green is the largest expanse of grass where the community can come together for events
- Highland Place is an urban community outdoor lounge and green space
- Jolly's Green is a community park with varied formal and informal play areas, gym equipment and a vision for an undulating connecting landscape
- East India Green an elongated residential square
- Poplar Riverside is a substantial river edge park, with a substantial play area, that transforms the community perception of their relationship to the River Lea.

Collectively these spaces represent a significant quantity of green space which if in one contiguous space would be a substantial new park that would make a broad offer meeting the needs of a diverse population. The key to these green spaces becoming greater value than a collection of individual parcels, as if one contiguous park, is through connectivity.

-  Existing public open space
-  Proposed public open space
-  'Healthy Street' inc. Widening and greening of pavements
-  Key green connections



Connecting Green Spaces diagram