

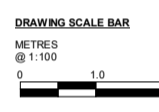
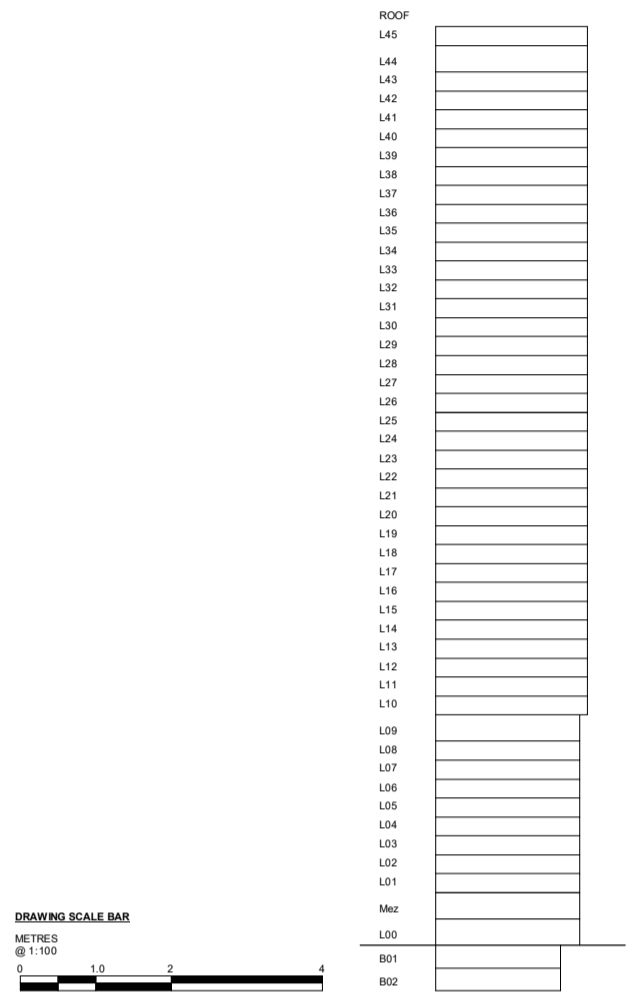
Notes & Key

RESPONSIBILITY IS NOT ACCEPTED FOR ERRORS MADE BY OTHERS IN SCALING FROM THIS DRAWING. THIS DRAWING IS COPYRIGHT OF GLENN HOWELLS ARCHITECTS.

GLENN HOWELLS ARCHITECTS TAKE NO RESPONSIBILITY FOR THE LOCATION OF LEGAL BOUNDARIES INDICATED ON THIS DRAWING AND ADVISE A SEPARATE DRAWING BE COMPLETED BY A SPECIALIST SURVEYOR IN ORDER TO ESTABLISH EXACT BOUNDARIES.

F1 DEVELOPMENT - 1,859 sqm
RED LINE APPLICATION BOUNDARY

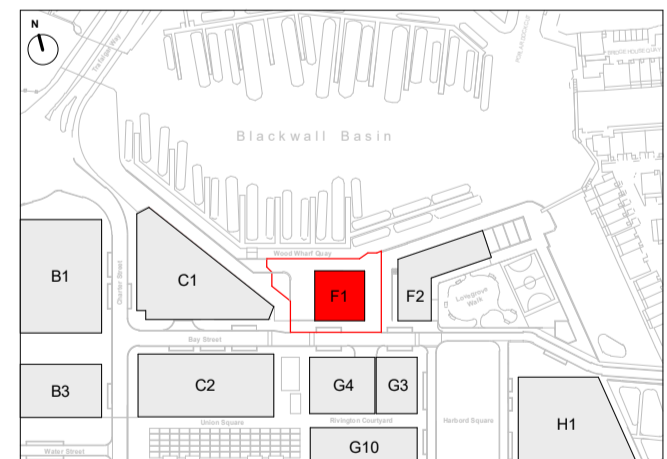
Key



Revisions

Date	Rev	By	Checked	Description
19Jan24	00	GV	AS	Planning Submission
03Mar25	01	GV	AS	Revised roof

Location Key



FOR PLANNING

Project: 7 Brannan Street - Wood Wharf
 GHA No.: 2356

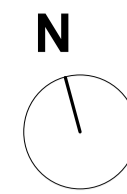
Client: Canary Wharf Group

Drawing Title: **Proposed Roof Level Plan**

Drawing No.: **103P3-F1-GHA-05147**
 Revision: **01**

Scale: 1 : 100@A1
 Date: 19JAN24
 Drawn By: GV
 Checked By: AS

Glenn Howells Architects
 Birmingham London glennhowells.co.uk



INF AG

INF AF

INF AE

INF AD

INF AC

INF AB

INF 30

INF 31

INF 32

INF 33

INF 34

INF 35

INF 36

INF 37

