

ONS 2008-based Subnational population projections

Background

On 27th May 2010 ONS released 2008-based subnational population projections (SNPP). These projections were the subject of a consultation that ran from November 2009 to January 2010 focussing on the initial migration assumptions.

The projections replace the 2006-based SNPP that were published in June 2008. It was anticipated that the 2008-based projections would be used by CLG in the local authority grant allocation process for financial years 2011/12 to 2013/14, however under the new government there is currently no clear indication of whether this will be the case.

The subnational population projections are based on the assumption that recent trends in fertility, mortality and migration at local authority level will continue; they take no account of local development policy, economic factors or the capacity of areas to accommodate population. The projections provide the population levels and age structure that would result if the assumptions about future fertility, mortality and migration levels were realised. For births, deaths and internal (UK) migration data for the years 2003-08 are used to determine the local trends. For international migration the data from 2003-08 are linked to the assumptions for England in the 2008-based national projections.

These projections, for areas in England, are based on the revised 2008 mid-year population estimates (see *GLA Intelligence Update 12-2008*).

Results are available for each year from 2008 (the mid-year estimate) to 2033 for all local authorities in England, with aggregates to counties, Government Office regions and health areas. Data are available by gender and for five-year age groups to 90+.

These projections are constrained to the ONS 2008-based National Population Projections for England, released in October 2009 (see *DMAG Update 14-2009*). In particular the key long-term assumptions for the projections for England are as follows:

- an average family size of 1.85 children per woman from 2014-15. The level is the same as that used in the 2006-based projections, however the level was assumed to be achieved at a slower pace by 2020-21. As a result the annual total fertility rates from 2009-10 are all lower than previously projected up until 2020-21
- an expectation of life at birth in 2032-33 of 83.4 years for males and 87.1 years for females. These values were produced with the same methodology and parameters as in the 2006-based projections, but using two more years of data, and so are virtually identical.
- net migration into England of 157 thousand each year from 2014-15 compared with 171.5 thousand a year in the 2006-based projections achieved from the same year.

As stated in the ONS news release:

“The (national population) projections are not forecasts, and do not attempt to predict the impact that future government policies, changing economic circumstances or other factors might have on demographic behaviour.”

The population in England at 2031 is currently projected to be 60.07 million.

It must be stressed that ONS considers the SNPP to be trend-based projections. The results may therefore differ considerably from the annual GLA projections in support and monitoring of the *London Plan*, in which migration levels are based on expected future housing developments.

Results

Table 1: Population by age for London, 2008 to 2033 (thousands)

AGE GROUP	2008	2011	2016	2021	2026	2031	2033
0-4	550.3	582.5	584.1	601.1	611.5	613.6	614.4
5-9	429.5	463.4	523.4	525.0	540.2	549.3	550.5
10-14	410.2	398.7	429.4	484.1	485.7	499.8	504.2
15-19	432.8	417.1	398.1	424.9	475.9	477.4	482.2
20-24	574.7	586.1	569.0	542.8	559.5	615.3	616.3
25-29	746.4	783.1	834.5	810.9	777.6	794.1	827.3
30-34	746.7	753.9	798.5	848.5	824.2	790.6	781.8
35-39	671.8	671.9	681.0	724.3	770.3	748.1	736.2
40-44	622.7	619.9	609.7	617.9	658.7	701.2	700.5
45-49	515.1	558.0	573.0	561.7	569.5	608.3	633.5
50-54	413.7	453.6	521.0	534.4	523.0	530.5	538.6
55-59	353.2	356.9	412.7	474.8	486.9	476.0	473.8
60-64	316.5	326.1	312.3	362.5	418.7	429.5	423.7
65-69	238.7	244.9	280.2	268.8	313.7	364.1	376.2
70-74	212.6	210.2	213.9	246.8	237.5	278.2	297.1
75-79	177.9	176.1	179.8	185.7	216.0	208.9	221.1
80-84	131.0	134.0	138.7	146.1	153.7	180.2	171.8
85-89	84.3	84.1	89.7	98.3	107.6	115.9	130.8
90+	40.6	47.7	57.7	69.1	84.4	102.0	108.1
All ages	7,668.3	7,868.3	8,206.8	8,527.8	8,814.7	9,083.0	9,188.1

For London the key results are an increase in population of 1.520 million persons (19.8 per cent) between 2008 and 2033, reaching a population of 9.188 million. This is considerably higher than the highest recorded population in London: 8.6 million in 1939. London's projected growth of nearly 20 per cent compares with an 18.0% increase for England. This is a return to earlier SNPP trends that showed a higher growth in London compared with England. The previous (2006-based) SNPP was the first ONS SNPP since the 2001 Census that showed less rapid growth for London compared with

England. This was primarily caused by a reduced share of international migration assigned to London using ONS' 2007 revision of international migration distribution methodology.

Table 2: Population (thousands) and percentage change 2008 to 2033, Government Office Regions

Region	2008	2033	Difference 2008-2033	% change 2008-2033
East	5,717.4	7,114.3	1,396.9	24.4
South West	5,210.4	6,321.5	1,111.1	21.3
Yorkshire and The Humber	5,217.5	6,296.0	1,078.5	20.7
East Midlands	4,429.4	5,333.7	904.3	20.4
South East	8,368.5	10,046.7	1,678.2	20.1
London	7,668.3	9,188.1	1,519.8	19.8
West Midlands	5,408.4	6,113.5	705.1	13.0
North East	2,570.6	2,829.8	259.2	10.1
North West	6,874.1	7,471.7	597.6	8.7
England	51,464.6	60,715.2	9,250.6	18.0

The fastest growing regions are projected to be East (24.4 per cent), South West (21.3 per cent) Yorkshire and the Humber (20.7 per cent), East Midlands (20.4 per cent) and South East (20.1 per cent), all projected to have a higher percentage growth than London. The 1.52 million absolute growth in London is 16.4 per cent of that of England (9.25 million) and is second behind the South East (1.68 million).

It is again projected that London's female population will grow more slowly than the male: 19.7 per cent compared to 20.0 per cent. This is part of a national phenomena mainly caused by the assumed continuation of the recent more rapid improvement in male survival at older ages.

Chart 1: Population by age for London, 2008 and 2033 (thousands)

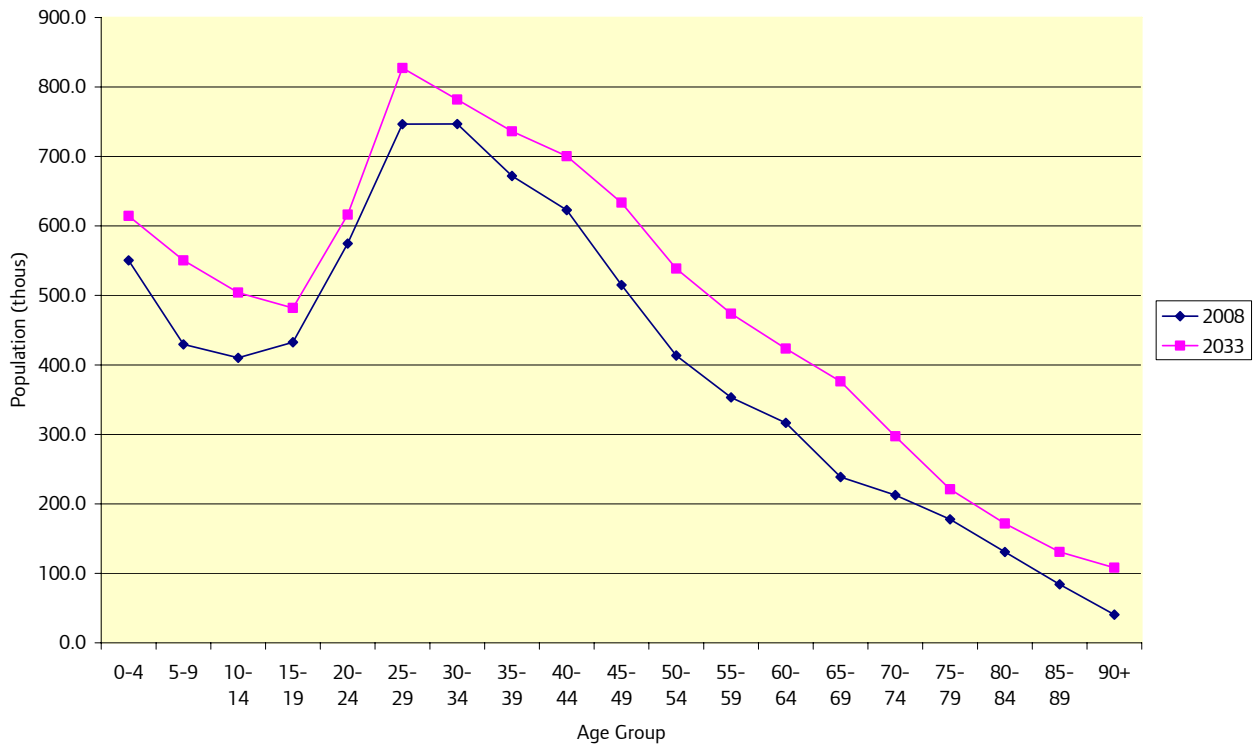


Chart 1 shows the changing age structure of London, with increases projected in all age groups between 2008 and 2033. The largest absolute increases are in the 50-54 and 65-69 age groups (137 thousand and 125 thousand), however the greatest percentage growth is projected for persons in the older age groups, with the highest for those aged over 90 plus (166 per cent).

Chart 2: Population pyramid by age for London, 2008 and 2033 (thousands)

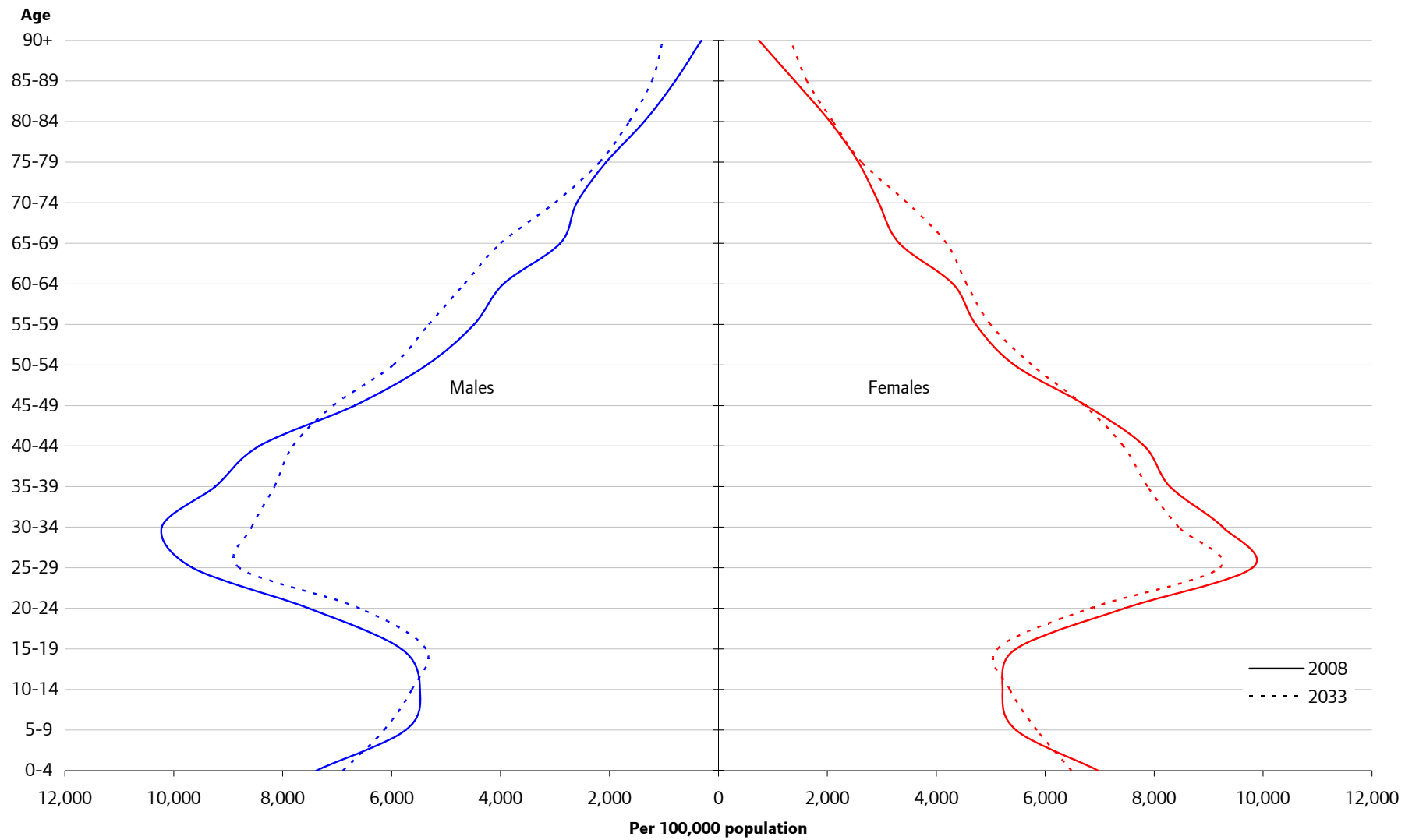


Table 3: Population by London borough¹, 2008 to 2033 (thousands)

	2008	2011	2016	2021	2026	2031	2033	Difference 2008-2033	% Change 2008-2033
City of London¹	11.3	12.9	15.1	16.7	18.0	19.1	19.5	8.2	72.6
Barking and Dagenham	171.5	175.5	182.5	189.5	195.8	201.6	203.8	32.3	18.8
Barnet	338.1	349.8	369.2	387.5	403.3	417.6	423.1	85.0	25.1
Bexley	225.0	229.1	237.1	246.2	255.2	263.7	267.0	42.0	18.7
Brent	254.5	252.3	252.6	255.3	258.5	262.7	264.6	10.1	4.0
Bromley	308.0	315.3	328.9	343.2	357.1	369.9	374.8	66.8	21.7
Camden	226.5	238.0	253.3	265.2	275.7	285.5	289.1	62.6	27.6
Croydon	341.2	347.0	358.7	371.3	383.3	394.5	399.0	57.8	16.9
Ealing	312.1	317.1	326.7	336.6	345.2	353.3	356.6	44.5	14.3
Enfield	289.0	295.0	305.6	316.5	326.4	335.7	339.3	50.3	17.4
Greenwich	223.7	228.0	235.9	244.3	252.4	260.0	262.9	39.2	17.5
Hackney	212.8	215.6	221.5	227.8	233.1	238.4	240.6	27.8	13.1
Hammersmith and Fulham	168.6	168.6	170.3	172.5	174.8	177.9	179.4	10.8	6.4
Haringey	225.3	227.6	233.2	239.3	244.9	250.5	252.9	27.6	12.3
Harrow	225.4	233.1	246.1	258.3	268.4	277.0	280.4	55.0	24.4
Havering	232.3	237.5	246.9	257.3	267.6	277.3	281.1	48.8	21.0
Hillingdon	258.1	266.3	279.4	291.6	303.2	313.6	317.5	59.4	23.0
Hounslow	230.2	238.6	252.0	263.9	273.9	282.7	286.1	55.9	24.3
Islington	188.5	192.9	199.7	205.2	210.1	215.5	217.8	29.3	15.5
Kensington and Chelsea	171.1	175.5	182.1	188.0	193.6	199.4	201.7	30.6	17.9
Kingston upon Thames	164.6	172.9	184.8	195.4	205.5	214.6	217.8	53.2	32.3
Lambeth	281.4	287.0	297.9	307.5	315.2	322.9	326.2	44.8	15.9
Lewisham	262.0	269.6	283.1	296.1	307.7	318.0	321.9	59.9	22.9
Merton	202.8	210.6	223.4	234.9	244.8	253.5	256.8	54.0	26.6
Newham	242.4	239.2	237.5	238.6	241.2	244.8	246.5	4.1	1.7
Redbridge	263.8	273.7	289.5	304.0	316.0	326.2	330.2	66.4	25.2
Richmond upon Thames	187.2	195.0	207.3	218.7	229.2	238.2	241.5	54.3	29.0
Southwark	283.0	296.8	316.7	332.6	345.7	357.5	362.0	79.0	27.9
Sutton	189.5	194.7	204.2	214.3	223.9	232.5	235.9	46.4	24.5
Tower Hamlets	226.8	237.2	252.7	265.0	274.7	283.7	287.2	60.4	26.6
Waltham Forest	221.4	223.3	227.9	233.3	238.5	243.3	245.3	23.9	10.8
Wandsworth	283.7	289.5	300.2	309.7	317.2	324.6	327.9	44.2	15.6
Westminster	246.6	262.9	284.8	301.2	314.8	327.1	331.7	85.1	34.5
London	7,668.3	7,868.3	8,206.8	8,527.8	8,814.7	9,083.0	9,188.1	1,519.8	19.8

All boroughs are projected to grow between 2008 and 2033 however there is a great deal of variation as to the extent of the growth. For instance Newham actually has a declining projection until 2016 and has the lowest projected growth (1.7 per cent) along with Brent (4.0 per cent). At the other end of the spectrum Westminster and Kingston upon Thames are both projected above 30 per cent growth (34.5 per cent and 32.3 per cent respectively).

¹ Projections for the City of London are considered to be less reliable and consequently projections for it should be treated with particular caution.

For more information please contact *John Hollis*, Demographic Consultant, Intelligence Unit,
Greater London Authority, City Hall, The Queen's Walk, London SE1 2AA
Tel: 020 7983 4604 e-mail: john.hollis@london.gov.uk

Copyright © Greater London Authority, 2010

ONS statistics presented in this Update have been reproduced with the permission of the Controller of Her Majesty's Stationery Office and are © Crown Copyright.