

Unemployment in London – January 2010

Latest Results

In the final quarter of 2009 the UK economy emerged from a six quarter recession with growth of 0.1 per cent¹. This *update* looks at key labour market indicators before and during the recession period. It presents the latest figures for London and nationally of those claiming Jobseekers Allowance (JSA) and also shows the official unemployment measure: the International Labour Organisation (ILO) definition, which is derived from the Annual Population Survey. In addition, it gives figures for employment levels.

The claimant count totalled 1.6 million people in Great Britain in January 2010, an increase of almost 30 per cent on the level one year ago. In London the increase over the same period was slightly higher at 33 per cent from 169,000 in Jan 2009 to 225,000 in Jan 2010. The claimant count has increased month on month throughout the period in Great Britain. In contrast, London's claimant count peaked at 228,000 in Oct 2009 and dropped to 220,000 in December 2009. The January 2010 Great Britain claimant count figures are equivalent to 65 per cent of the ILO Unemployed², compared with 60 per cent in London (see the background section of this updated for an explanation of the differences).

Overall, London had an unemployment rate³ for the quarter Oct-Dec 2009 of 9.1 per cent, joint third highest with Yorkshire and Humber, behind the West Midlands and the North East, and 1.3 percentage points higher than the UK rate. Unemployment levels increased in all regions over the last year with almost 450,000 more people out of work in Oct-Dec 2009 than Oct-Dec 2008 in Great Britain (see Table 1). London saw an increase of 76,000, equivalent to a 1.8 per cent increase on the previous year and almost half a percentage point higher than the UK increase. The Yorkshire and Humber region has seen the largest change in unemployment rates with an increase of almost 2.5 per cent (see Chart 1).

Table 1: ILO Unemployed for the regions and UK, Oct-Dec 2009 (Seasonally adjusted)

	Unemployment		Change on year ago	
	No (000's)	Rate (%)	No (000's)	Rate (%)
North East	117	9.3	11	0.9
North West	289	8.5	22	0.7
Yorkshire and the Humber	240	9.1	65	2.4
East Midlands	167	7.2	21	0.9
West Midlands	252	9.4	38	1.4
East	194	6.5	27	1.0
London	373	9.1	76	1.8
South East	276	6.2	54	1.2
South West	172	6.4	42	1.6
England	2,080	7.9	356	1.4
Wales	122	8.6	21	1.6
Scotland	206	7.6	65	2.3
Northern Ireland	49	6.0	6	0.7
Great Britain	2,408	7.9	442	1.5
United Kingdom	2,457	7.8	448	1.4

Source: Labour Force Survey.

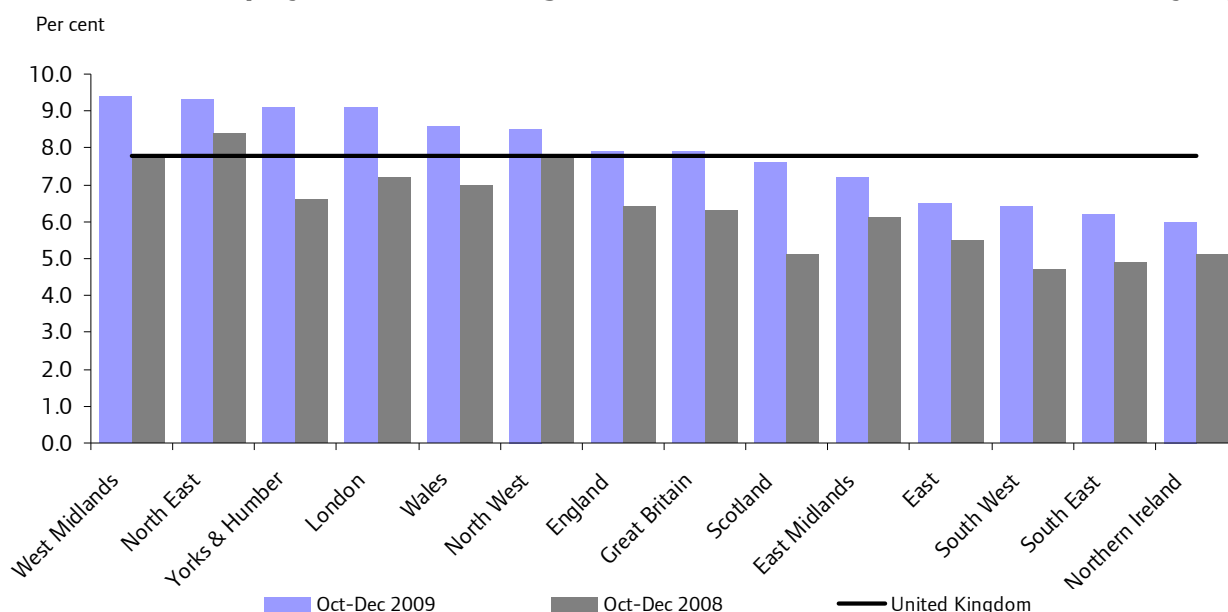
Notes: Change rates are calculated as a percentage of the economically active aged 16+

¹ Office for National Statistics

² Seasonally adjusted

³ Expressed as a percentage of all economically active population aged 16 or over.

Chart 1: ILO unemployment rates for regions, October-Dec 2008 and 2009 (seasonally adjusted)



Source: Labour Force Survey

There are clear differences between London and the other regions in terms of the characteristics of the unemployed – 46 per cent of London’s unemployed in the last quarter of 2009 were women, compared with a national figure of 39 per cent. The latest figures for London show a slightly higher proportion of economically active women were unemployed than men at 9.4 per cent for women compared to 9.0 for men (see Table 2). In all other regions, the female rate is lower than the male unemployment rate. The number of unemployed men in London has grown more over the last year than the number of unemployed women.

Table 2: Change in ILO unemployed in London (seasonally adjusted)

	Oct-Dec 2009		Change on previous quarter		Change on previous year	
	(000s)	(%)	(000s)	(%)	(000s)	(%)
People	373	9.1	2	0	75	1.7
Men	202	9.0	2	0.2	47	2.1
Women	172	9.4	0	-0.2	30	1.6

Source: Labour Force Survey

Notes: All figures are for population aged 16 and over. Unemployment rates are calculated as a percentage of the total economically active aged 16+. Change rates are calculated as a percentage of change in the level of unemployment.

While unemployment is a key labour market indicator, a fuller picture can be gained by looking at alternative indicators. Table 3 gives employment estimates for the Oct-Dec 2009 quarter and shows that there were over 3.7 million London residents in employment, of which just over 55 per cent are men, a higher proportion than in other regions. The overall employment rate in London, that is the percentage of the working-age population in paid employment, is below average for the UK, at 69 per cent, compared with 72 per cent nationally. This is entirely due to the relatively low rate among women, as the employment rate for London’s men is very close to the average.

The total number of Londoners in employment in Oct-Dec 2009 was 68,000 fewer than during the same period a year earlier. This is equivalent to a decrease of 2.7 per cent, the largest percentage decrease regionally and a full percentage point higher than the UK figure.

Table 3: Employment for the regions and the UK, October to December 2009 (seasonally adjusted).

	Total		Male		Female		Change on year ago	
	No (000's)	Rate (%)	No (000's)	Rate (%)	No (000's)	Rate (%)	No (000's)	Rate (%)
North East	1,146	69.0	597	70.3	549	67.6	-7	-0.9
North West	3,102	70.4	1,664	73.6	1,438	66.8	-27	-0.8
Yorkshire & the Humber	2,394	70.7	1,267	72.8	1,127	68.4	-36	-1.7
East Midlands	2,137	74.6	1,141	76.9	996	72.0	-25	-1.6
West Midlands	2,432	70.5	1,287	72.6	1,145	68.1	-19	-1.1
East	2,776	76.2	1,506	79.8	1,270	72.1	-60	-1.5
London	3,711	68.7	2,053	74.7	1,658	62.3	-68	-2.7
South East	4,150	77.0	2,196	80.0	1,954	73.6	-58	-1.6
South West	2,495	75.5	1,301	76.5	1,194	74.4	-53	-2.5
England	24,343	72.6	13,012	75.7	11,331	69.2	-352	-1.7
Wales	1,305	68.9	679	70.3	626	67.4	-31	-1.7
Scotland	2,492	73.5	1,291	75.5	1,201	71.5	-41	-1.8
Northern Ireland	765	67.3	411	70.3	354	64.1	-5	-1.2
Great Britain	28,140	72.5	14,983	75.4	13,158	69.3	-423	-1.7
United Kingdom	28,905	72.4	15,393	75.3	13,512	69.2	-428	-1.7

Source: Labour Force Survey

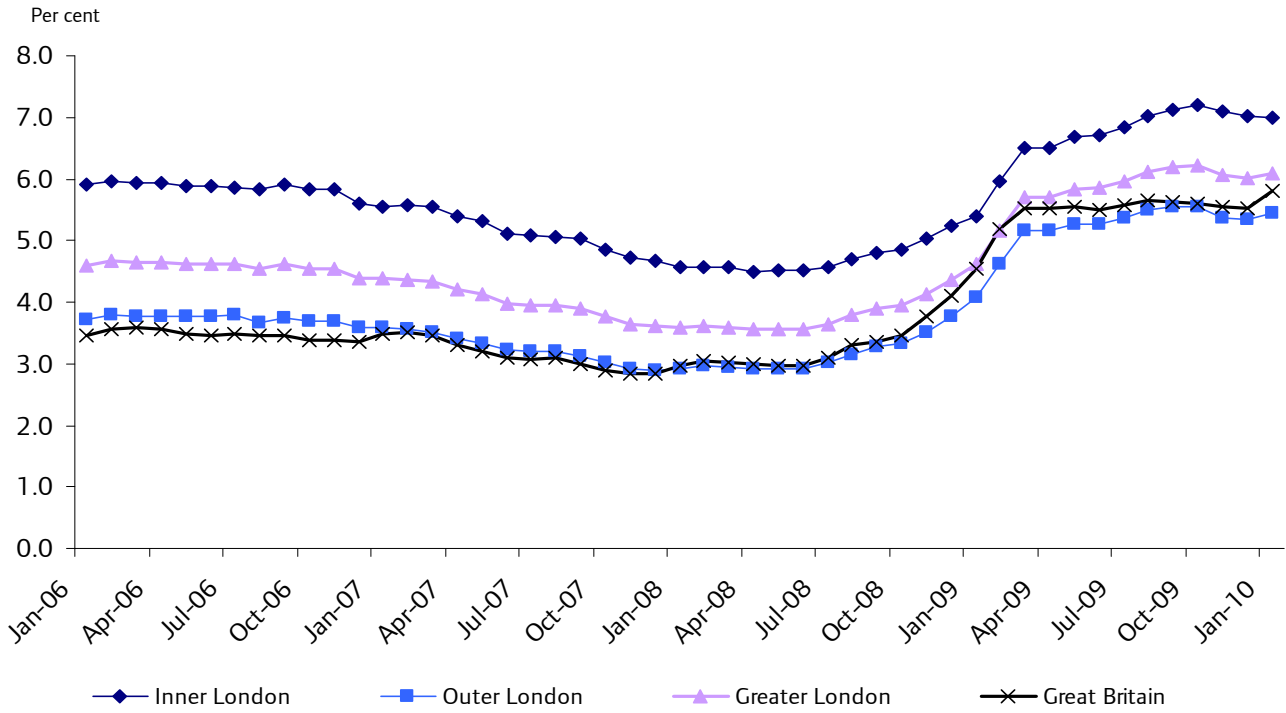
Notes: Employment levels are quoted for all people aged 16 and over. Employment rates are calculated as a percentage of the working-age population. Change rates are calculated as a percentage of the working-age population.

While the ILO unemployment measure is seen as a better indicator of overall levels of unemployment in the population, the claimant count can be used to provide a more complete picture. Claimant count is a more timely data source, is a full count from administrative systems (as opposed to a sample survey) and provides more detail for smaller areas. The main limitation of claimant count data is that it does not include all unemployed people as the eligibility criteria mean that not all unemployed people can claim Job Seekers Allowance. Particularly worth noting in the context of a recession and using the claimant count as an indicator, is the criterion that some people are not able to claim for more than six months, so after this time will cease to be included in the claimant count. (See the background section of this report for more detail).

The JSA claimant count stood at 225,260 for London in January 2010, of which 47 per cent was in Inner London, compared with around 41 per cent of the economically active population. The GLA claimant rates (the claimant count as a percentage of the resident economically active population using GLA population estimates) show a rate of 6.1 per cent for London compared with a national figure of 5.8 per cent. The Inner London claimant count rate is clearly higher at 7.0 per cent, while the Outer London rate is below the national average at 5.4 per cent.

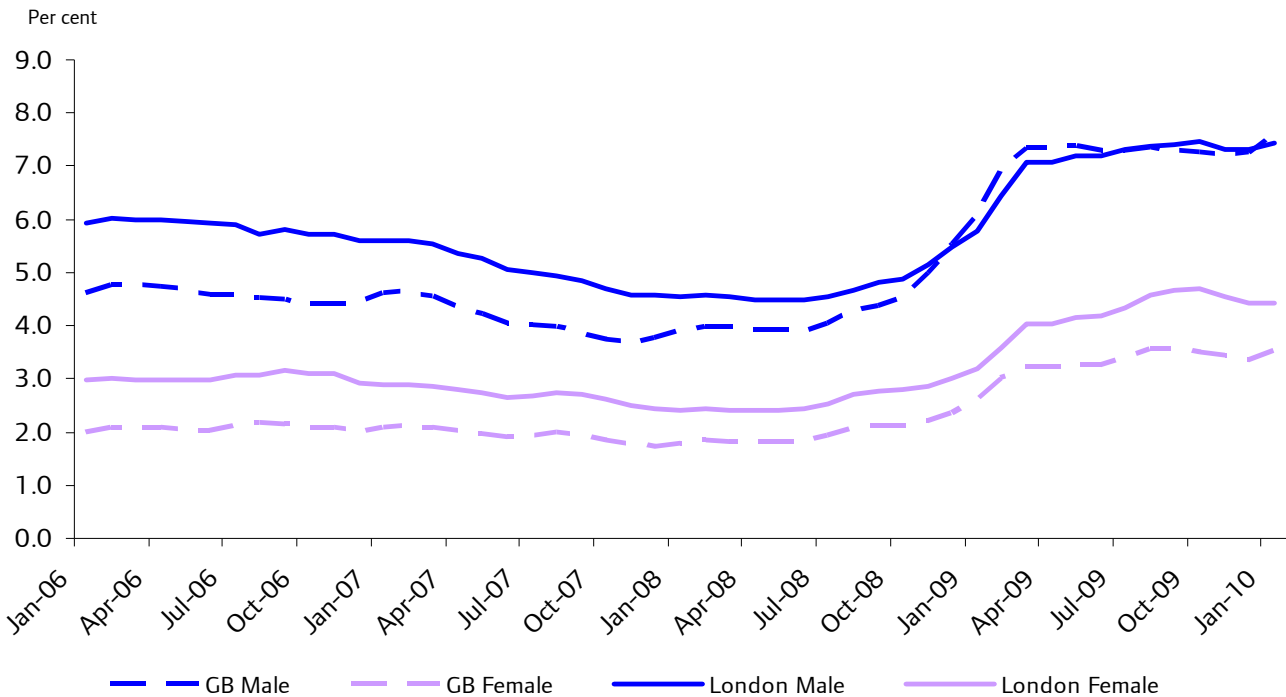
The claimant count figures for the period January 2006 to January 2010 are presented in Charts 2 to 4. The figures are presented in Table 4. Chart 2 shows that between January 2006 and July 2008 claimant count rates were falling overall, despite some fluctuations in both London and Great Britain. Between July 2008 and March 2009 rates increased by 2.1 percentage points in London and 2.4 in Great Britain. Although rates have continued to rise overall, the rate of increase has slowed with London's claimant count rising by 0.5 percentage points and Great Britain's by 0.3 to January 2010.

Chart 2: Claimant count rates for all people, January 2006-2010.



Source: Office for National Statistics (Jobcentre Plus administrative system) & GLA estimates

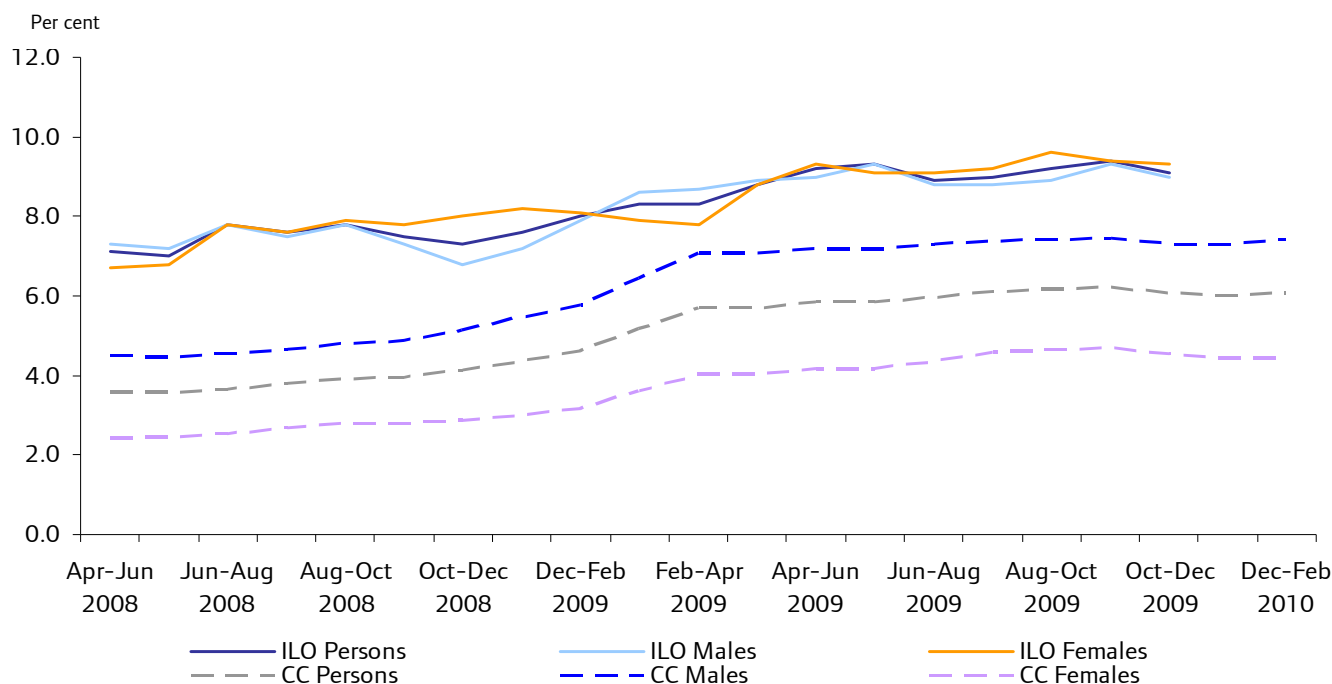
Chart 3: Claimant count rates for men and women in London and Great Britain, January 2006 to January 2010



Source: Office for National Statistics (Jobcentre Plus administrative system) & GLA estimates

Chart 3 illustrates rates for men and women over the same period, showing the much higher claimant count rates and the sharper rise seen particularly between November 2008 and March 2009 among men, and the relative stability of rates for women. The national rate for men climbed more steeply to rise above that for men in London for the period February to July 2009. Since July the rate for males in Great Britain remained below that for males in London until the most recent figures, which show a claimant count rate of 7.4 per cent for Great Britain compared to 7.2 per cent for London. In contrast, the difference between claimant count rates among women in Great Britain and London has remained relatively stable, with women in London consistently having a higher rate than those in Great Britain.

Chart 4: Unemployment trends in London, May 2008 to July 2009



Source: Claimant count – Office for National Statistics (Jobcentre Plus administrative system) & GLA estimates
ILO Unemployment – Labour Force Survey, Office for National Statistics

Chart 4 illustrates the trends since the middle of 2008 in both the ILO measure and GLA claimant count rates. The ILO measure is on a rolling three-month basis and as it is a survey based estimate shows a degree of volatility, whereas the claimant count rate is taken at a single date in each month. It clearly shows that they follow similar trends, although the claimant count has risen to a greater proportion of the ILO measure.

Table 5 shows the claimant count levels and rates for Inner, Outer and Greater London as illustrated in Chart 4 and for Great Britain using the same method of calculation. The table also gives the claimant count rates by age and shows the increasing gap between the rates for young adults and older age groups across all areas.

Table 6 gives the comparable figures for each London borough showing the overall rates for each month in the last year. Hackney (9.9 per cent), Tower Hamlets (9.6 per cent) and Newham (8.8 per cent) have the highest rates. Hackney also has the highest increase in rate on a year ago at 2.4 per cent, followed by Islington and Lambeth, both at 2 per cent. All boroughs recorded an increase on the previous year. Richmond had the lowest claimant count rate at 2.6 per cent and the second lowest increase in rate at just 0.7 per cent.

Background

As the claimant count is a by-product of the benefits administration system, it only counts those unemployed people who are claiming JSA. GLA analysis has highlighted that some unemployed people are more likely to be missed by the claimant count than others; these include women, young people and those living in higher income households. This largely reflects the eligibility criteria for Jobseekers Allowance (JSA). For this reason, the claimant count is best viewed as an unemployment indicator not a comprehensive unemployment measure.

The Government's official and preferred measure of unemployment is currently ILO unemployment. ILO unemployment measures those people out of work, who are actively looking for work and are available to start work. At a regional level, ILO unemployment is measured by the Annual Population Survey or the Labour Force Survey. The ILO measure is more comprehensive than the claimant count as it includes the many unemployed people who are not eligible for, or not claiming, JSA. It is the ILO measure that is generally quoted in the media.

Despite its limitations, the claimant count is widely used because it is timely (data are available monthly around 4/5 weeks after the date of the count) and importantly, because it is available for small areas. ILO unemployment estimates are not available for wards and even the borough level ILO estimates (modelled and survey based) have high confidence intervals and cannot be generated by age or gender with any degree of reliability. Even at regional level, there is a degree of uncertainty in the figures, so small changes may reflect variations in the sample rather than in the underlying population.

The modelled unemployment estimates produced by the Office for National Statistics for local authorities (and now also available on a consistent basis for Parliamentary Constituencies) are based on determining a strong relationship between ILO unemployment (as measured by the Labour Force Survey) and auxiliary information (mainly the Claimant Count). This relationship is then used to provide more reliable estimates of ILO unemployment for local authorities. These model-based estimates are always more precise than any direct estimates produced at this level of geography from the Labour Force Survey/Annual Population Survey.

Further information about the claimant count measure and how it compares to the official ILO measure can be found in: *DMAG Briefing 2010-01 Claimant Count Model 2010: Technical Note*

Table 4: Claimant count rates by gender, annually September 2004-2008, monthly October 2008 to Jan 2010

	Sep-04	Sep-05	Sep-06	Sep-07	Sep-08												
Persons																	
Inner London	6.1	6.0	5.9	5.0	4.8												
Outer London	3.5	3.7	3.8	3.1	3.3												
Greater London	4.5	4.6	4.6	3.9	3.9												
Great Britain	3.0	3.2	3.4	3.0	3.4												
Males																	
Inner London	7.9	7.6	7.5	6.4	6.0												
Outer London	4.4	4.6	4.7	3.8	4.0												
Greater London	5.8	5.8	5.8	4.8	4.8												
Great Britain	4.0	4.2	4.5	3.8	4.4												
Females																	
Inner London	3.9	4.0	3.9	3.4	3.3												
Outer London	2.4	2.6	2.6	2.3	2.4												
Greater London	3.0	3.1	3.2	2.7	2.8												
Great Britain	1.8	2.0	2.1	1.9	2.1												
	Oct-08	Nov-08	Dec-08	Jan-09	Feb-09	Mar-09	Apr-09	May-09	Jun-09	Jul-09	Aug-09	Sep-09	Oct-09	Nov-09	Dec-09	Jan-10	
Persons																	
Inner London	4.8	5.0	5.2	5.4	6.0	6.3	6.5	6.7	6.7	6.8	7.0	7.1	7.2	7.1	7.0	7.0	
Outer London	3.3	3.5	3.8	4.1	4.6	5.0	5.1	5.3	5.3	5.4	5.5	5.5	5.5	5.4	5.3	5.4	
Greater London	3.9	4.1	4.4	4.6	5.2	5.5	5.7	5.8	5.8	6.0	6.1	6.2	6.2	6.1	6.0	6.1	
Great Britain	3.5	3.8	4.1	4.5	5.2	5.4	5.5	5.5	5.5	5.6	5.7	5.6	5.6	5.5	5.5	5.8	
Males																	
Inner London	6.1	6.3	6.6	6.8	7.5	7.9	8.1	8.3	8.3	8.4	8.6	8.6	8.7	8.6	8.6	8.6	
Outer London	4.1	4.3	4.7	5.0	5.7	6.1	6.3	6.4	6.4	6.5	6.6	6.6	6.6	6.4	6.4	6.6	
Greater London	4.9	5.1	5.5	5.8	6.5	6.9	7.1	7.2	7.2	7.3	7.4	7.4	7.5	7.3	7.3	7.4	
Great Britain	4.5	5.0	5.5	6.1	6.9	7.2	7.3	7.4	7.3	7.3	7.3	7.3	7.2	7.2	7.3	7.6	
Females																	
Inner London	3.3	3.4	3.5	3.6	4.1	4.3	4.5	4.7	4.7	4.9	5.1	5.3	5.3	5.2	5.1	5.0	
Outer London	2.4	2.5	2.6	2.9	3.3	3.5	3.7	3.8	3.8	4.0	4.2	4.3	4.3	4.1	4.0	4.0	
Greater London	2.8	2.9	3.0	3.2	3.6	3.9	4.0	4.2	4.2	4.3	4.6	4.7	4.7	4.5	4.4	4.4	
Great Britain	2.1	2.2	2.3	2.6	3.0	3.1	3.2	3.3	3.3	3.4	3.5	3.5	3.5	3.4	3.4	3.5	

Source: Claimant count – Office for National Statistics (Jobcentre Plus administrative system) & GLA estimates

Table 5: Claimant count and rates by age and gender, Jan 2009 to Jan 2010

	Claimant count rate (%)														
	Claimant count numbers			by sex			by age (all)			by age (males)			by age (females)		
	Persons	Males	Females	Persons	Males	Females	16-24	25-44	45-59/64	16-24	25-44	45-59/64	16-24	25-44	45-59/64
Inner London															
Jan-09 (2009 base)	80,245	55,810	24,435	5.4	6.8	3.6	14.1	4.1	5.8	18.1	5.4	7.0	10.2	2.5	4.2
Feb-09	88,710	61,405	27,320	6.0	7.5	4.1	16.0	4.6	6.2	20.4	6.0	7.4	11.6	2.8	4.5
Mar-09	93,665	64,570	29,095	6.3	7.9	4.3	17.0	4.8	6.4	21.8	6.3	7.7	12.2	3.0	4.7
Apr-09	96,780	66,425	30,360	6.5	8.1	4.5	17.2	5.0	6.7	22.2	6.5	7.9	12.2	3.2	5.0
May-09	99,280	67,775	31,510	6.7	8.3	4.7	17.3	5.2	6.9	22.4	6.7	8.1	12.2	3.4	5.2
Jun-09	99,760	68,050	31,710	6.7	8.3	4.7	17.3	5.2	6.9	22.4	6.7	8.2	12.3	3.4	5.3
Jul-09	101,740	68,865	32,885	6.8	8.4	4.9	18.4	5.2	7.0	23.2	6.7	8.2	13.6	3.4	5.4
Aug-09	104,425	69,915	34,520	7.0	8.6	5.1	19.6	5.3	7.1	24.3	6.8	8.3	15.0	3.5	5.6
Sep-09	105,840	70,405	35,420	7.1	8.6	5.3	20.1	5.3	7.3	24.9	6.7	8.4	15.4	3.6	5.8
Oct-09	107,100	71,300	35,820	7.2	8.7	5.3	19.9	5.4	7.4	24.9	6.8	8.6	15.0	3.7	6.0
Nov-09	105,545	70,410	35,110	7.1	8.6	5.2	19.2	5.3	7.5	24.2	6.8	8.6	14.2	3.6	6.0
Dec-09	104,245	69,990	34,235	7.0	8.6	5.1	18.6	5.3	7.5	23.7	6.7	8.7	13.4	3.5	6.0
Jan-10 (2010 base)	105,790	71,340	34,445	7.0	8.6	5.0	18.6	5.3	7.5	23.9	6.8	8.6	13.4	3.5	6.0
Outer London															
Jan-09 (2009 base)	88,525	60,520	28,000	4.1	5.0	2.9	10.5	3.5	3.1	12.4	4.6	3.6	8.3	2.1	2.4
Feb-09	100,600	68,695	31,900	4.6	5.7	3.3	12.2	4.0	3.4	14.5	5.2	4.0	9.5	2.4	2.7
Mar-09	107,975	73,610	34,350	5.0	6.1	3.5	13.1	4.2	3.7	15.6	5.6	4.3	10.2	2.7	2.9
Apr-09	111,955	76,040	35,920	5.1	6.3	3.7	13.3	4.4	3.9	15.8	5.7	4.5	10.4	2.8	3.1
May-09	114,370	77,355	37,005	5.3	6.4	3.8	13.2	4.5	4.1	15.7	5.9	4.7	10.2	2.9	3.2
Jun-09	114,295	77,195	37,110	5.3	6.4	3.8	13.1	4.5	4.1	15.5	5.9	4.7	10.2	2.9	3.3
Jul-09	116,940	78,260	38,665	5.4	6.5	4.0	14.0	4.6	4.1	16.3	5.9	4.7	11.2	3.0	3.3
Aug-09	119,495	78,755	40,730	5.5	6.6	4.2	14.8	4.6	4.1	17.0	5.8	4.7	12.3	3.1	3.4
Sep-09	120,535	79,035	41,480	5.5	6.6	4.3	15.0	4.6	4.2	17.2	5.8	4.7	12.4	3.2	3.5
Oct-09	120,505	79,070	41,430	5.5	6.6	4.3	14.6	4.7	4.2	16.9	5.9	4.8	11.9	3.2	3.6
Nov-09	116,560	76,960	39,610	5.4	6.4	4.1	13.5	4.6	4.2	15.7	5.8	4.7	10.8	3.1	3.5
Dec-09	115,920	77,180	38,735	5.3	6.4	4.0	13.2	4.6	4.2	15.6	5.8	4.8	10.3	3.1	3.5
Jan-10 (2010 base)	119,470	79,870	39,595	5.4	6.6	4.0	13.5	4.7	4.3	16.1	6.0	4.9	10.4	3.2	3.5
Greater London															
Jan-09 (2009 base)	168,770	116,330	52,435	4.6	5.8	3.2	11.9	3.8	4.0	14.4	5.0	4.7	9.1	2.3	3.0
Feb-09	189,310	130,100	59,220	5.2	6.5	3.6	13.6	4.2	4.3	16.6	5.6	5.1	10.3	2.6	3.3
Mar-09	201,640	138,180	63,445	5.5	6.9	3.9	14.6	4.5	4.6	17.8	5.9	5.4	11.0	2.8	3.5
Apr-09	208,735	142,465	66,280	5.7	7.1	4.0	14.8	4.7	4.8	18.1	6.1	5.6	11.1	3.0	3.7
May-09	213,650	145,130	68,515	5.8	7.2	4.2	14.7	4.8	5.0	18.1	6.2	5.8	11.0	3.1	3.9
Jun-09	214,055	145,245	68,820	5.8	7.2	4.2	14.7	4.8	5.0	18.0	6.2	5.8	11.0	3.2	3.9
Jul-09	218,680	147,125	71,550	6.0	7.3	4.3	15.6	4.9	5.0	18.8	6.3	5.9	12.2	3.2	4.0
Aug-09	223,920	148,670	75,250	6.1	7.4	4.6	16.6	4.9	5.1	19.6	6.3	5.9	13.4	3.3	4.1
Sep-09	226,375	149,440	76,900	6.2	7.4	4.7	16.9	4.9	5.2	19.9	6.3	5.9	13.6	3.4	4.2
Oct-09	227,605	150,370	77,250	6.2	7.5	4.7	16.6	5.0	5.3	19.8	6.3	6.0	13.1	3.4	4.3
Nov-09	222,105	147,370	74,720	6.1	7.3	4.5	15.6	4.9	5.2	18.8	6.2	6.0	12.2	3.4	4.3
Dec-09	220,165	147,170	72,970	6.0	7.3	4.4	15.2	4.9	5.3	18.5	6.2	6.0	11.5	3.3	4.3
Jan-10 (2010 base)	225,260	151,210	74,040	6.1	7.4	4.4	15.4	5.0	5.3	18.9	6.4	6.1	11.6	3.3	4.3
Great Britain															
Jan-09 (2009 base)	1,239,610	924,610	315,000	4.5	6.1	2.6	10.2	4.1	3.1	12.7	6.0	3.9	6.9	1.9	2.0
Feb-09	1,412,360	1,050,195	362,160	5.2	6.9	3.0	11.9	4.6	3.5	14.8	6.7	4.3	8.1	2.2	2.3
Mar-09	1,473,655	1,095,145	378,510	5.4	7.2	3.1	12.4	4.8	3.6	15.4	7.0	4.5	8.4	2.3	2.4
Apr-09	1,506,420	1,116,615	389,805	5.5	7.3	3.2	12.3	5.0	3.8	15.5	7.2	4.7	8.4	2.4	2.5
May-09	1,512,440	1,119,200	393,240	5.5	7.4	3.3	12.1	5.0	3.8	15.2	7.2	4.7	8.2	2.5	2.6
Jun-09	1,499,520	1,106,145	393,370	5.5	7.3	3.3	12.0	5.0	3.8	14.9	7.2	4.7	8.2	2.5	2.5
Jul-09	1,516,900	1,108,315	408,585	5.6	7.3	3.4	12.5	5.0	3.8	15.2	7.1	4.7	9.0	2.5	2.5
Aug-09	1,543,815	1,115,335	428,480	5.7	7.3	3.5	13.0	5.0	3.8	15.7	7.1	4.7	9.6	2.6	2.6
Sep-09	1,532,715	1,104,770	427,945	5.6	7.3	3.5	13.0	5.0	3.8	15.6	7.0	4.6	9.6	2.6	2.6
Oct-09	1,524,710	1,101,620	423,095	5.6	7.2	3.5	12.7	5.0	3.8	15.5	7.0	4.6	9.3	2.6	2.6
Nov-09	1,511,200	1,098,170	413,030	5.5	7.2	3.4	12.4	5.0	3.8	15.2	7.0	4.7	8.8	2.6	2.6
Dec-09	1,507,735	1,102,860	404,875	5.5	7.3	3.4	12.3	5.0	3.8	15.2	7.1	4.7	8.4	2.6	2.6
Jan-10 (2010 base)	1,591,510	1,165,055	426,455	5.8	7.6	3.5	12.9	5.3	3.9	16.0	7.5	4.9	8.8	2.7	2.7

Source: Claimant count – Office for National Statistics (Jobcentre Plus administrative system) & GLA estimates

Table 6: Claimant rates, London boroughs, January 2009 to January 2010

	Jan-09	Feb-09	Mar-09	Apr-09	May-09	Jun-09	Jul-09	Aug-09	Sep-09	Oct-09	Nov-09	Dec-09	Jan-10
City of London	2.3	2.5	2.8	3.0	3.0	3.1	3.0	2.9	2.9	3.1	3.1	2.9	2.9
Barking & Dagenham	6.9	7.7	8.4	8.5	8.7	8.7	8.6	8.8	8.7	8.8	8.5	8.7	8.7
Barnet	3.4	3.9	4.2	4.3	4.5	4.5	4.7	4.7	4.8	4.8	4.6	4.5	4.6
Bexley	3.7	4.2	4.5	4.7	4.7	4.6	4.7	4.8	4.9	4.8	4.5	4.5	4.6
Brent	5.5	6.1	6.5	6.7	6.9	7.0	7.2	7.3	7.4	7.4	7.1	7.0	7.3
Bromley	3.3	3.8	4.0	4.2	4.2	4.1	4.2	4.4	4.4	4.3	4.0	4.0	4.1
Camden	4.7	5.1	5.2	5.3	5.4	5.4	5.6	5.7	5.9	6.0	6.0	6.0	6.0
Croydon	4.2	4.9	5.3	5.5	5.5	5.6	5.7	6.0	6.0	5.9	5.8	5.7	5.9
Ealing	4.4	5.1	5.4	5.6	5.8	5.8	6.0	6.1	6.3	6.3	6.2	6.2	6.2
Enfield	5.3	6.0	6.4	6.7	6.7	6.8	7.0	7.0	7.3	7.2	7.1	7.1	7.2
Greenwich	5.7	6.3	6.6	6.9	7.0	6.7	6.9	7.0	7.2	6.9	6.6	6.6	6.7
Hackney	7.5	8.3	8.8	9.2	9.6	9.5	9.7	10.0	10.1	10.0	10.0	9.9	9.9
Hammersmith & Fulham	4.3	4.8	5.1	5.4	5.5	5.5	5.7	5.7	5.9	5.8	5.6	5.6	5.5
Haringey	6.9	7.6	8.1	8.2	8.2	8.4	8.5	8.7	8.9	9.1	8.9	8.9	8.6
Harrow	3.1	3.6	3.9	4.0	4.1	4.1	4.3	4.4	4.4	4.5	4.3	4.2	4.3
Havering	3.6	4.2	4.6	4.7	4.9	4.9	4.7	4.8	4.8	4.8	4.5	4.7	4.8
Hillingdon	3.5	4.1	4.4	4.7	4.8	4.8	5.0	5.0	5.1	5.2	5.1	5.1	5.3
Hounslow	3.5	4.0	4.3	4.5	4.6	4.6	4.8	4.8	4.9	4.9	4.8	5.0	4.9
Islington	5.9	6.5	6.8	7.1	7.3	7.3	7.5	7.7	8.0	8.2	8.1	8.0	7.9
Kensington & Chelsea	3.1	3.5	3.7	3.9	4.0	3.9	4.0	4.1	4.3	4.3	4.3	4.3	4.2
Kingston upon Thames	2.2	2.6	2.9	3.0	3.2	3.1	3.3	3.5	3.4	3.4	3.4	3.1	3.2
Lambeth	5.6	6.1	6.5	6.7	6.9	7.0	7.0	7.3	7.3	7.6	7.6	7.4	7.6
Lewisham	5.3	6.0	6.3	6.6	6.7	6.8	6.9	7.3	7.3	7.2	7.0	6.9	7.0
Merton	2.9	3.3	3.6	3.6	3.8	3.8	3.9	4.1	4.1	4.1	4.0	3.8	4.0
Newham	7.3	8.0	8.5	8.7	9.0	9.1	9.3	9.4	9.5	9.5	9.4	9.2	8.8
Redbridge	4.6	5.0	5.4	5.6	5.8	6.0	5.9	6.1	6.1	6.2	5.8	5.9	5.9
Richmond upon Thames	1.9	2.3	2.5	2.6	2.8	2.7	2.8	2.9	2.8	2.8	2.7	2.5	2.6
Southwark	5.7	6.2	6.6	6.9	7.1	7.1	7.1	7.4	7.5	7.6	7.5	7.3	7.4
Sutton	2.8	3.3	3.6	3.7	3.8	3.8	3.9	4.0	3.9	4.0	3.8	3.8	4.0
Tower Hamlets	8.3	8.9	9.4	9.5	9.7	9.8	10.1	10.2	10.2	10.2	10.0	9.8	9.6
Waltham Forest	6.6	7.3	7.7	7.9	8.2	8.2	8.2	8.4	8.4	8.6	8.3	8.4	8.4
Wandsworth	3.0	3.4	3.7	3.8	4.0	3.9	4.0	4.2	4.1	4.2	4.1	4.1	4.2
Westminster	3.5	3.9	4.1	4.2	4.3	4.4	4.4	4.5	4.7	4.7	4.8	4.8	4.8
Inner London	5.4	6.0	6.3	6.5	6.7	6.7	6.8	7.0	7.1	7.2	7.1	7.0	7.0
Outer London	4.1	4.6	5.0	5.1	5.3	5.3	5.4	5.5	5.5	5.5	5.4	5.3	5.4
Greater London	4.6	5.2	5.5	5.7	5.8	5.8	6.0	6.1	6.2	6.2	6.1	6.0	6.1
Great Britain	4.6	5.2	5.4	5.5	5.5	5.5	5.6	5.7	5.6	5.6	5.5	5.5	5.8

Source: Claimant count – Office for National Statistics (Jobcentre Plus administrative system) & GLA estimates

For more information please contact Richard Walker, Intelligence Unit,
Greater London Authority, City Hall, The Queen's Walk, London SE1 2AA
Tel: 020 7983 4699 e-mail: richard.walker@london.gov.uk

Data produced in this briefing have been reproduced with the permission of the Controller of Her Majesty's Stationery Office and are © Crown Copyright.