

Population by Country of Birth and Nationality: 2009

Background

On 26th August 2010 the Office for National Statistics (ONS), in combination with the Home Office and the Department for Work and Pensions (DWP), published a range of demographic statistics as part of the most recent quarterly consolidated release. Most of the datasets relate either directly or indirectly to migration, but one – population estimates by country of birth and nationality – uses results from the Annual Population Survey relating to the period January to December 2009. Estimates are available at London borough level and continue a series that goes back to 2004.

This *Update* presents these indicators as they relate to the UK, London and the London boroughs.

The Data and Definitions

The following paragraphs are based on the ONS description of the data and the source.

The tables are produced using the Annual Population Survey (APS), which is the Labour Force Survey (LFS) plus various sample boosts.

The Labour Force Survey (LFS) is a household survey of people in the UK. It includes those residents at private addresses and includes those students living in halls of residence whose parents are resident in the UK. However, the LFS does not cover most communal establishments

The APS combines results from the LFS and the English, Welsh and Scottish Labour Force Survey boosts, which increase the size of the sample. During 2004 and 2005 the APS also included a boost for England.

Each quarter's LFS sample of 53,000 households is made up from five "waves", each of approximately 11,000 households. Each wave is interviewed in five successive quarters, such that in any one quarter, one wave will be receiving their first interview, one wave their second and so on, with one wave receiving their fifth and final interview. Thus there is an 80 per cent overlap in the samples for each successive quarter and the sample is completely different after six quarters.

In some areas of the UK the boost makes up the bulk of the APS dataset, with a smaller contribution from the main LFS. The boost has a four year wave structure instead of the five quarter wave structure in the main LFS; after the initial interview, sampled households are interviewed three more times on an annual basis. Therefore the boost for these areas may be slower to react to a change in migration patterns than the main LFS and the speed with which the APS sample responds to changes in the household population may vary across the UK.

More robust estimates are available by using the APS rather than the main LFS. APS datasets are produced quarterly with each dataset containing 12 months of data. There are approximately 360,000 persons per dataset.

Nationality refers to that stated by the respondent during the interview. Country of birth is the country in which they were born. It is possible that an individual's nationality may change, but the respondent's place of birth cannot change, although the country's name may subsequently change. This means that country of birth gives a more robust estimate of change over time.

People born in Northern Ireland have the right to British and/or Irish nationality/citizenship. Therefore in the nationality tables British and Irish have been combined for Northern Ireland. Non-British consists of all other nationalities except British, apart from Northern Ireland where it consists of all other nationalities except British and Irish. Where a respondent has dual nationality the first one is recorded.

In the tables the following terms are used:

United Kingdom/British includes the Isle of Man and the Channel Islands.

European Union 13 - (EU 13) – the fifteen countries of the EU as constituted between 1995 and May 2004, less the United Kingdom and the Republic of Ireland.

European Union 14 – (EU 14) - the fifteen countries of the EU as constituted between 1995 and May 2004, less the United Kingdom.

European Union A8 – the eight Eastern European countries that joined the EU in May 2004.

European Union 24/26 – all members of the EU, except for the United Kingdom. For 2004 to 2006 this relates to 24 members and from 2007 it is 26 with the accession of Bulgaria and Romania.

Rest of the World – all countries outside the EU as formed at the time.

Figures have been rounded independently and may not add to totals.

Commentary

Table 1 shows that London and the UK have similar patterns of change for the composition of the population by country of birth. In both the UK and London, the percentages of UK and Irish-born groups have continued to decline, while all other groups have increased their share. Overall, the numbers of those born outside the UK has risen by 1.68 million, 32 per cent, between 2004 and 2009. Over a quarter of this increase, 432 thousand, has been in London, though in London there has been a slower rate of increase (20 per cent). As expected, the estimates for those born in the European Union and the A8 in particular, have continued to rise at significantly higher rates than other groups. Since 2004, the A8 estimates have more than doubled in London to 179 thousand and more than quadrupled in the UK to 738 thousand. London's representation of all groups born outside the UK (34 per cent) is three times higher than that of UK (11 per cent).

Table 2 shows very similar patterns when analysing nationality. In both the UK and London, higher percentages of the population are British nationals than are born in the UK. In London in 2009, this is 79 per cent compared to 66 per cent. London's proportions of non-British nationals (21 per cent) are still three times higher than those in the UK (7 per cent), but, again, they have risen at a slower rate than in the UK. In 2009, the growth of the A8 population is again most apparent, with estimates rising five-fold in the UK to 745 thousand and more than doubling in London to 185 thousand.

Table 1: Population by Country of Birth: United Kingdom and London: 2004 to 2009: thousands and percentages

thousands	United Kingdom						London					
	2004	2005	2006	2007	2008	2009	2004	2005	2006	2007	2008	2009
United Kingdom	53,807	53,872	53,770	53,791	53,883	54,022	5,147	5,089	5,055	5,021	5,044	5,080
Non-United Kingdom	5,233	5,552	5,997	6,342	6,683	6,910	2,168	2,290	2,386	2,474	2,516	2,600
Republic of Ireland	452	437	434	420	415	389	124	128	122	119	112	114
European Union 13	768	767	809	832	846	871	254	255	265	271	276	279
European Union A8	167	274	430	589	689	738	85	104	139	162	174	179
European Union 24/26	1,492	1,577	1,769	1,969	2,115	2,183	516	536	567	614	643	669
Rest of the World	3,741	3,975	4,228	4,373	4,568	4,727	1,652	1,754	1,818	1,860	1,873	1,931
Total	59,040	59,424	59,767	60,133	60,566	60,932	7,315	7,379	7,441	7,495	7,560	7,680
Percentage	2004	2005	2006	2007	2008	2009	2004	2005	2006	2007	2008	2009
United Kingdom	91.14	90.66	89.97	89.45	88.97	88.66	70.36	68.97	67.93	66.99	66.72	66.15
Non-United Kingdom	8.86	9.34	10.03	10.55	11.03	11.34	29.64	31.03	32.07	33.01	33.28	33.85
Republic of Ireland	0.77	0.74	0.73	0.70	0.69	0.64	1.70	1.73	1.64	1.59	1.48	1.48
European Union 13	1.30	1.29	1.35	1.38	1.40	1.43	3.47	3.46	3.56	3.62	3.65	3.63
European Union A8	0.28	0.46	0.72	0.98	1.14	1.21	1.16	1.41	1.87	2.16	2.30	2.33
European Union 24/26	2.53	2.65	2.96	3.27	3.49	3.58	7.05	7.26	7.62	8.19	8.51	8.71
Rest of the World	6.34	6.69	7.07	7.27	7.54	7.76	22.58	23.77	24.43	24.82	24.78	25.14

Table 2: Population by Nationality: United Kingdom and London: 2004 to 2009: thousands and percentages

thousands	United Kingdom						London					
	2004	2005	2006	2007	2008	2009	2004	2005	2006	2007	2008	2009
British	56,091	56,229	56,162	56,192	56,395	56,590	6,019	5,994	5,981	5,946	5,987	6,061
Non-British	2,946	3,198	3,594	3,941	4,169	4,344	1,296	1,388	1,461	1,552	1,577	1,625
European Union 14	951	945	981	971	975	1,006	364	377	380	381	392	416
European Union A8	125	233	404	567	677	745	72	87	128	156	173	185
European Union 24/26	1,094	1,198	1,403	1,588	1,736	1,858	445	476	515	570	614	667
Rest of the World	1,852	2,000	2,191	2,354	2,433	2,486	850	912	945	982	962	958
Total	59,037	59,427	59,756	60,133	60,564	60,934	7,315	7,382	7,442	7,498	7,564	7,686
Percentage	2004	2005	2006	2007	2008	2009	2004	2005	2006	2007	2008	2009
British	95.01	94.62	93.99	93.45	93.12	92.87	82.28	81.20	80.37	79.30	79.15	78.86
Non-British	4.99	5.38	6.01	6.55	6.88	7.13	17.72	18.80	19.63	20.70	20.85	21.14
European Union 14	1.61	1.59	1.64	1.61	1.61	1.65	4.98	5.11	5.11	5.08	5.18	5.41
European Union A8	0.21	0.39	0.68	0.94	1.12	1.22	0.98	1.18	1.72	2.08	2.29	2.41
European Union 24/26	1.85	2.02	2.35	2.64	2.87	3.05	6.08	6.45	6.92	7.60	8.12	8.68
Rest of the World	3.14	3.37	3.67	3.91	4.02	4.08	11.62	12.35	12.70	13.10	12.72	12.46

Source: Annual Population Survey, Copyright Office for National Statistics

Population estimates for the individual London boroughs are much less robust than for London as a whole. For London all of the 2009 estimates, except those for the Republic of Ireland, the A8 and the EU 13 have a coefficient of variation (CV)¹ of less than 5 per cent and are considered by ONS to be 'precise'. The remaining London estimates are 'reasonably precise' with a CV of between 5 and 10 per cent. In the borough tables all UK born and British estimates are considered to be 'reasonably precise'. For country of birth a minority of borough estimates of non-UK born have a CV of between 10 and 20 per cent but are still considered to be 'acceptable'. These are mainly outer boroughs. The overwhelming majority of non-British estimates are considered to be 'acceptable', with just two boroughs (Bexley and Havering) having CVs in excess of 20 per cent and the estimates therefore considered to be 'not reliable for practical purposes'. Only Camden, Kensington & Chelsea, Newham and Westminster have 'reasonably precise' estimates for non-British populations.

In Table 3, which shows country of birth, a number of cells are highlighted. In the '% UK' columns these are boroughs that have the lowest percentages; all below 60 per cent. In 2009, nine boroughs fall into this category with Brent, Newham and Westminster below 50 per cent. Islington and Bexley are the only two boroughs where their non-UK population has fallen, as shown in the '% Change Non-UK' column, but their UK-born population has risen. In general, the contribution to the total population growth made by the non-UK born is greater in the outer London boroughs, particularly in Barking & Dagenham and Waltham Forest. The growth of the size of the non-UK population in the outer London boroughs was more than double that in the inner London boroughs.

Similar statistics are displayed in Table 4 relating to population by nationality. Here the seven highlighted boroughs are those with British populations of less than 75 per cent of the total. Kensington & Chelsea, Newham and Westminster have the lowest values, below 70 per cent. The only borough with a decline in its Non-British population was Hammersmith & Fulham, while Bromley's non-British population doubled since 2004. The growth of the non-British population in the outer London boroughs was again double that in the inner London boroughs.

¹ The CV is defined as being the standard error divided by the estimate expressed as a percentage.

Chart 1: Population of non-UK born: London: 2004 to 2009: percentages

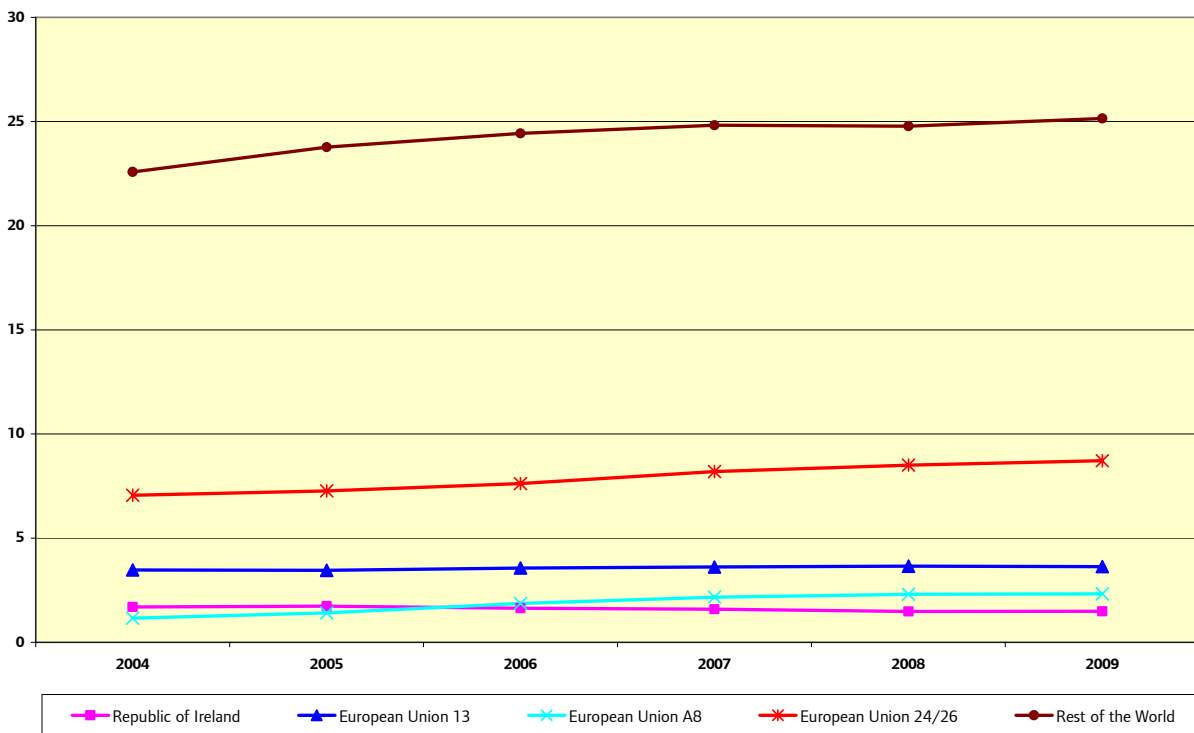


Chart 2: Population of non-British: London: 2004 to 2009: percentages

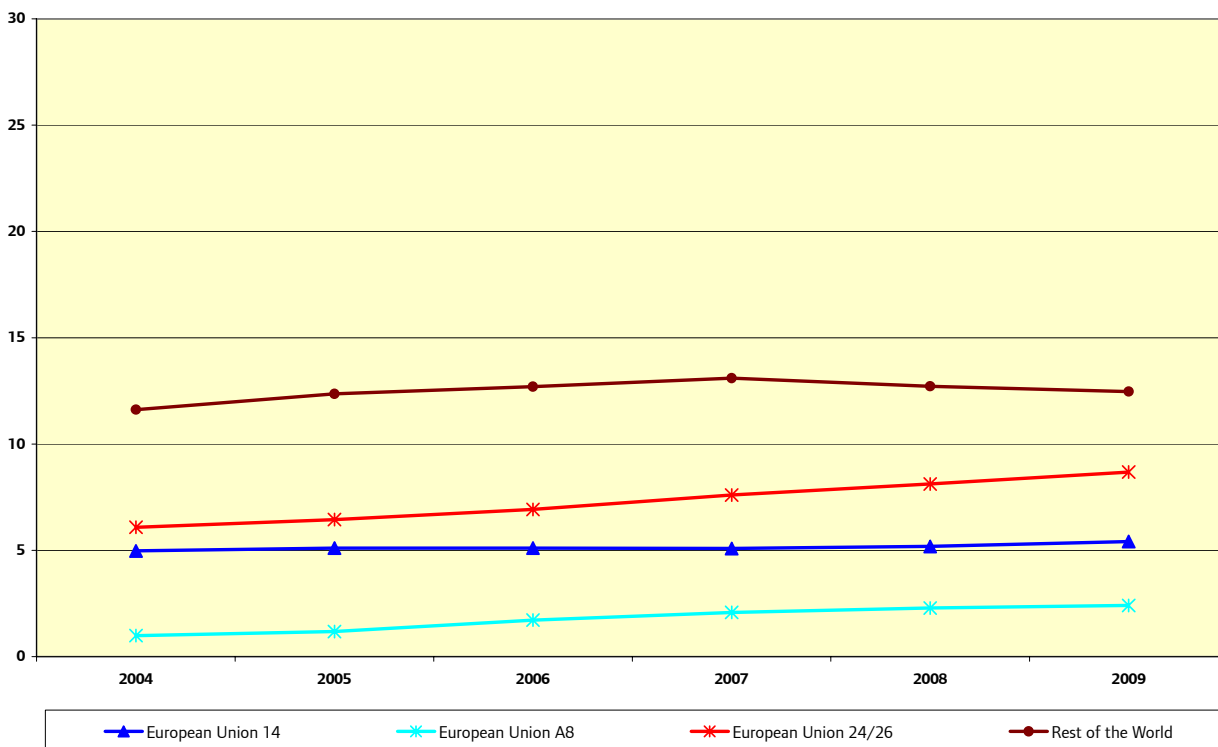


Table 3: Population by Country of Birth: London boroughs: 2004 to 2009: thousands and percentages

	2004			2009			Change	Change	% Change
	UK	Non-UK	% UK	UK	Non-UK	% UK	UK	Non-UK	Non-UK
Camden	130	80	62	138	99	58	8	19	24
City of London	-	-	-	-	-	-	-	-	-
Hackney	132	73	64	137	78	64	5	5	7
Hammersmith and Fulham	103	64	62	102	71	59	-1	7	11
Haringey	136	85	62	132	96	58	-4	11	13
Islington	123	56	69	139	55	72	16	-1	-2
Kensington and Chelsea	91	78	54	97	84	54	6	6	8
Lambeth	168	98	63	177	99	64	9	1	1
Lewisham	184	65	74	193	73	73	9	8	12
Newham	146	105	58	113	138	45	-33	33	31
Southwark	175	82	68	189	95	67	14	13	16
Tower Hamlets	126	81	61	137	88	61	11	7	9
Wandsworth	186	83	69	189	97	66	3	14	17
Westminster	112	110	50	117	124	49	5	14	13
Barking and Dagenham	133	32	81	118	53	69	-15	21	66
Barnet	216	103	68	222	109	67	6	6	6
Bexley	199	20	91	207	19	92	8	-1	-5
Brent	142	125	53	127	145	47	-15	20	16
Bromley	264	29	90	271	35	89	7	6	21
Croydon	259	74	78	243	101	71	-16	27	36
Ealing	180	121	60	172	138	55	-8	17	14
Enfield	206	73	74	189	100	65	-17	27	37
Greenwich	169	49	78	161	62	72	-8	13	27
Harrow	134	76	64	117	100	54	-17	24	32
Havering	208	15	93	214	19	92	6	4	27
Hillingdon	189	54	78	181	74	71	-8	20	37
Hounslow	151	62	71	138	87	61	-13	25	40
Kingston upon Thames	118	32	79	124	39	76	6	7	22
Merton	133	58	70	124	81	60	-9	23	40
Redbridge	178	67	73	171	89	66	-7	22	33
Richmond upon Thames	139	35	80	138	43	76	-1	8	23
Sutton	159	21	88	156	34	82	-3	13	62
Waltham Forest	158	60	72	148	76	66	-10	16	27
Inner London	1,812	1,060	63	1,860	1,197	61	48	137	13
Outer London	3,335	1,106	75	3,221	1,404	70	-114	298	27
London	5,147	2,168	70	5,080	2,600	66	-67	432	20

Source: Annual Population Survey, Copyright Office for National Statistics

Table 4: Population by Nationality: London boroughs: 2004 to 2009: thousands and percentages

	2004			2009			Change British	Change Non-Brit	% Change Non-Brit
	British	Non-British	%	British	Non-British	%			
Camden	162	47	78	170	67	72	8	20	43
City of London	-	-	-	-	-	-	-	-	-
Hackney	169	36	82	165	50	77	-4	14	39
Hammersmith and Fulham	119	48	71	127	45	74	8	-3	-6
Haringey	169	52	76	173	55	76	4	3	6
Islington	143	36	80	157	37	81	14	1	3
Kensington and Chelsea	111	57	66	123	58	68	12	1	2
Lambeth	201	65	76	206	70	75	5	5	8
Lewisham	204	45	82	213	52	80	9	7	16
Newham	191	60	76	157	94	63	-34	34	57
Southwark	200	57	78	217	66	77	17	9	16
Tower Hamlets	166	40	81	182	43	81	16	3	8
Wandsworth	215	55	80	220	67	77	5	12	22
Westminster	141	81	64	159	84	65	18	3	4
Barking and Dagenham	142	22	87	136	35	80	-6	13	59
Barnet	266	54	83	262	71	79	-4	17	31
Bexley	209	9	96	212	14	94	3	5	56
Brent	194	73	73	191	81	70	-3	8	11
Bromley	281	13	96	280	26	92	-1	13	100
Croydon	291	42	87	288	57	83	-3	15	36
Ealing	235	66	78	233	79	75	-2	13	20
Enfield	247	32	89	232	57	80	-15	25	78
Greenwich	185	33	85	177	46	79	-8	13	39
Harrow	171	39	81	170	48	78	-1	9	23
Havering	216	8	96	223	9	96	7	1	13
Hillingdon	208	35	86	212	43	83	4	8	23
Hounslow	177	35	83	169	56	75	-8	21	60
Kingston upon Thames	129	21	86	138	25	85	9	4	19
Merton	154	37	81	150	55	73	-4	18	49
Redbridge	220	26	89	211	49	81	-9	23	88
Richmond upon Thames	152	22	87	152	28	84	0	6	27
Sutton	166	14	92	169	21	89	3	7	50
Waltham Forest	185	34	84	186	39	83	1	5	15
Inner London	2,191	679	76	2,269	788	74	78	109	16
Outer London	3,828	615	86	3,791	839	82	-37	224	36
London	6,019	1,296	82	5,987	1,577	79	-32	281	22

Source: Annual Population Survey, Copyright Office for National Statistics

Comparison with live births to non-UK born mothers in 2009

As expected, there was a strong positive association (R^2 value of 0.915) between the number of live births to mothers born outside the UK and the number of non-UK born residents (Chart 3). The sharp slope (gradient > 1) is indicative of the higher number of births to non-UK born mothers compared to those born in the UK. This is a typical characteristic associated with this younger migrant group, with increasing inflows in the recent years. The pattern is apparent among all London boroughs, none of which appear as outliers.

Chart 3: Number of non-UK born mothers vs population of non-UK born residents: 2009: percentages

