

London's Migration Flows with the rest of the UK: 2007-2009

Background

The Office for National Statistics (ONS) releases estimates of inter-regional migration within the UK on a quarterly basis, based on NHS patient re-registrations. These data are provided for countries within the UK and the English Government Office Regions. The estimates are from the Patient Register Data System (PRDS) and are based on the re-registration of NHS patients between the former Health Authority areas in England & Wales and the Area Health Boards in Scotland and Northern Ireland. These transfers are recorded at the NHS Central Register at Southport and Edinburgh, and at the Central Services Agency in Belfast. The figures have been adjusted to take account of differences in recorded cross-border flows between England & Wales, Scotland, and Northern Ireland. Full data and supporting documentation are available at the following link:

<http://www.statistics.gov.uk/StatBase/Product.asp?vlnk=10191>

An ONS summary report on internal migration can be found at:

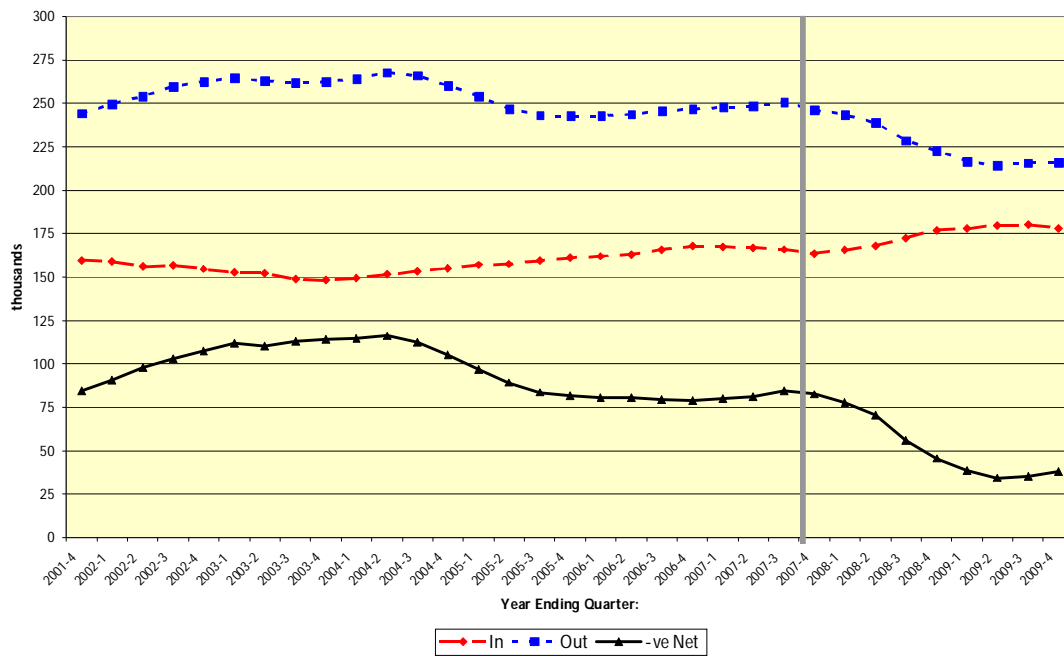
http://www.statistics.gov.uk/about/data/methodology/quality/downloads/IM_SQR.pdf

Since 2007 the net migration outflow from London to other parts of the UK has fallen dramatically from recent levels due to record high levels of in-migrants and a decline in out-migrants. This pattern is described in the 2010 Focus on London 'Population and Migration' chapter:

<http://data.london.gov.uk/datastore/applications/focus-london-population-and-migration>

Chart 1 shows that in the last two quarters of 2009 the trend apparent since the end of 2007 has changed, with a slightly increasing number of migrants leaving London and stability in the number of arrivals, resulting in a slight rise in the net outflow. This *Update* presents the internal migration flows by broad age groups for calendar years 2007 and 2009, thus approximating the start and end points of this period of change. These time points are highlighted in Chart 1. The *Update* also presents the changing age-specific probabilities of people moving to and from London. The probabilities are calculated as the total number of moves to or from London per thousand total population within each age group of the origin areas using the ONS mid-year estimates for the appropriate years. Therefore flows from the South West to London, for example, are based on the population of the South West, and vice versa.

Chart 1: Internal (UK) migration to and from London, thousands, cumulative 12-month periods since 2001, thousands. ONS/PRDS.



Inflows

Table 1 shows the inflows for 2007 and 2009 by age groups as well as the age-specific probabilities. The likelihood of migrants coming into London from other parts of the UK increased across all age groups, except for persons aged over 65. The largest increases were for children. The lower panel of the table highlights the decreases as well as those probabilities that increased the most at each age. These data are also presented in Chart 2. The largest increases were from the West Midlands, Yorkshire and the Humber and the North West, although changes in the smaller inflows from Scotland and Northern Ireland have also resulted in larger percentage differences.

The relatively larger rises in the probabilities of moving to London at ages 0-15 are possibly a reflection of the changing age structure of the age group following the increased numbers of births that have occurred since 2001. It is known that parents are more likely to move when their children are pre-school age and the age profile of the 0-15s is becoming younger.

Table 1: Migration inflows and probabilities (per thousand population) to London from other UK regions: 2007 and 2009

2007 UK, E&W, England Inflows into London (excluding those from within London)

Destination	Age group	Origin													
		United Kingdom	England and Wales	England	North East	North West	Yorkshire and the Humber	East Midlands	West Midlands	East	South East	South West	Wales	Scotland	Northern Ireland
London	0-15	14,438	13,876	13,435	375	1,084	949	882	1,174	3,184	4,791	996	441	447	111
	16-24	57,679	55,621	53,784	2,024	4,270	4,394	4,987	4,723	9,028	17,879	6,479	1,837	1,646	361
	25-44	75,367	71,404	69,106	2,039	5,725	4,724	4,647	5,523	14,065	25,255	7,128	2,298	3,310	563
	45-64	12,044	11,569	11,226	265	728	585	610	724	2,672	4,499	1,143	343	373	89
	65+	4,258	4,141	4,022	75	220	203	178	209	1,036	1,661	440	119	93	23
All ages	163,786	156,611	151,573	4,778	12,027	10,855	11,304	12,353	29,985	54,085	16,186	5,038	5,869	1,147	

2009 UK, E&W, England Inflows into London (excluding those from within London)

Destination	Age group	Origin													
		United Kingdom	England and Wales	England	North East	North West	Yorkshire and the Humber	East Midlands	West Midlands	East	South East	South West	Wales	Scotland	Northern Ireland
London	0-15	17,004	16,308	15,818	454	1,455	1,344	1,028	1,759	3,514	5,135	1,129	490	569	120
	16-24	62,939	60,688	58,662	2,185	4,771	4,904	5,425	5,251	9,623	19,216	7,287	2,026	1,793	406
	25-44	80,764	76,424	73,917	2,289	6,421	5,413	4,906	6,244	14,823	26,085	7,736	2,507	3,616	666
	45-64	13,266	12,656	12,309	323	830	686	667	859	2,873	4,751	1,320	347	492	103
	65+	4,276	4,135	4,019	61	234	168	191	206	1,058	1,669	432	116	112	20
All ages	178,249	170,211	164,725	5,312	13,711	12,515	12,217	14,319	31,891	56,856	17,904	5,486	6,582	1,315	

2007 Probabilities of moves into London (per 1000 population)

Destination	Age group	Origin													
		United Kingdom	England and Wales	England	North East	North West	Yorkshire and the Humber	East Midlands	West Midlands	East	South East	South West	Wales	Scotland	Northern Ireland
London	0-15	1.3	1.4	1.4	0.8	0.8	1.0	1.1	1.1	3.0	3.0	1.1	0.8	0.5	0.3
	16-24	7.8	8.5	8.7	6.2	4.9	6.4	9.2	7.2	14.6	19.2	10.8	5.0	2.7	1.5
	25-44	4.4	4.7	4.8	3.1	3.1	3.4	3.9	3.8	9.1	11.1	5.4	3.1	2.3	1.1
	45-64	0.8	0.9	0.9	0.4	0.4	0.5	0.5	0.5	1.8	2.1	0.8	0.4	0.3	0.2
	65+	0.4	0.5	0.5	0.2	0.2	0.2	0.2	0.2	1.1	1.2	0.5	0.2	0.1	0.1
All ages	2.7	2.9	3.0	1.9	1.8	2.1	2.6	2.3	5.3	6.5	3.1	1.7	1.1	0.7	

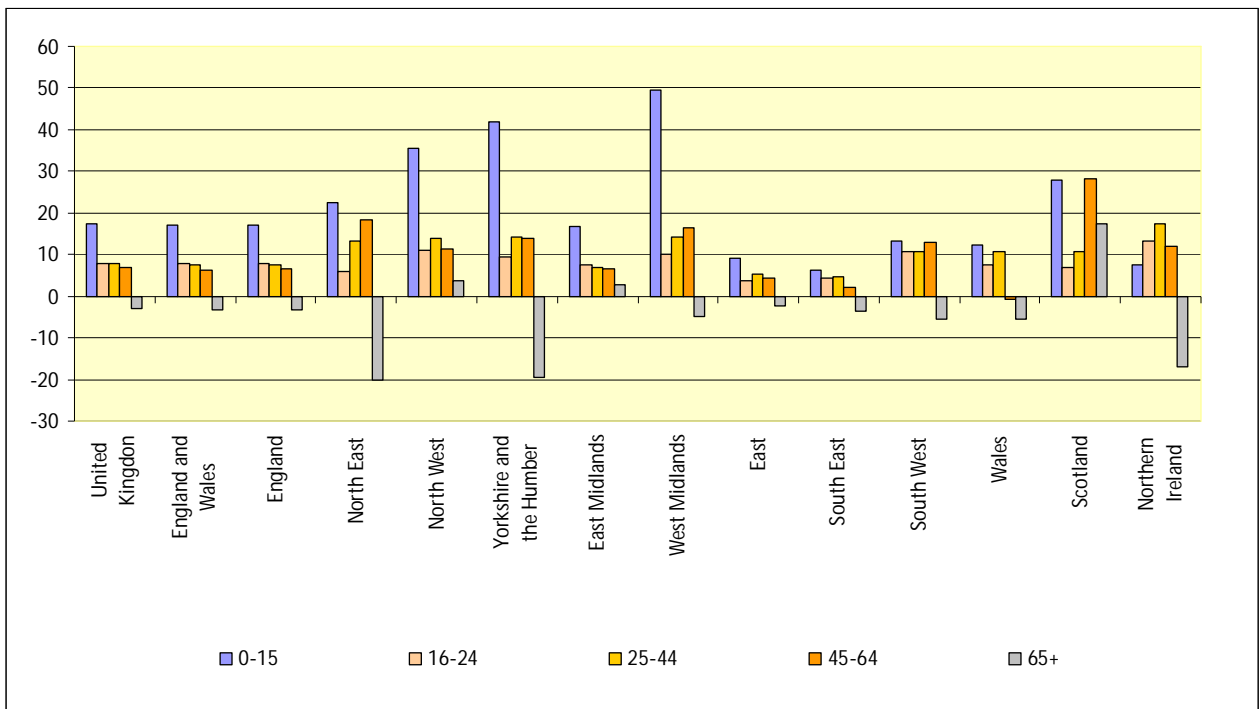
2009 Probabilities of moves into London (per 1000 population)

Destination	Age group	Origin													
		United Kingdom	England and Wales	England	North East	North West	Yorkshire and the Humber	East Midlands	West Midlands	East	South East	South West	Wales	Scotland	Northern Ireland
London	0-15	1.5	1.6	1.6	1.0	1.1	1.4	1.3	1.7	3.2	3.2	1.2	0.9	0.6	0.3
	16-24	8.4	9.2	9.4	6.6	5.5	7.0	9.9	7.9	15.1	20.0	12.0	5.4	2.9	1.7
	25-44	4.7	5.1	5.1	3.5	3.5	3.9	4.2	4.4	9.5	11.6	6.0	3.4	2.6	1.3
	45-64	0.8	0.9	0.9	0.5	0.5	0.5	0.6	0.6	1.9	2.2	0.9	0.4	0.4	0.2
	65+	0.4	0.5	0.5	0.1	0.2	0.2	0.3	0.2	1.1	1.2	0.4	0.2	0.1	0.1
All ages	2.9	3.1	3.2	2.1	2.0	2.4	2.7	2.6	5.5	6.7	3.4	1.8	1.3	0.7	

% Difference in inflow probabilities 2009-2007

Destination	Age group	Origin													
		United Kingdom	England and Wales	England	North East	North West	Yorkshire and the Humber	East Midlands	West Midlands	East	South East	South West	Wales	Scotland	Northern Ireland
London	0-15	17.3	17.0	17.1	22.6	35.4	41.9	16.6	49.6	9.1	6.3	13.2	12.4	27.9	7.5
	16-24	7.7	7.7	7.8	5.8	11.1	9.5	7.4	10.0	3.7	4.5	10.6	7.5	6.8	13.3
	25-44	7.8	7.7	7.5	13.2	13.9	14.1	6.9	14.3	5.4	4.5	10.8	10.8	10.8	17.3
	45-64	7.0	6.3	6.4	18.3	11.3	14.0	6.4	16.4	4.2	2.2	13.0	-0.7	28.3	11.9
	65+	-2.8	-3.4	-3.3	-20.2	3.8	-19.4	2.7	-5.0	-2.3	-3.5	-5.6	-5.6	17.3	-16.9
All ages	7.4	7.2	7.2	10.1	13.4	13.6	6.8	14.8	4.2	3.4	9.5	8.0	11.1	12.7	

Chart 2: Percentage change in inflow probabilities to London from other UK regions by broad age groups: 2007 to 2009



Outflows

In Table 2 all of the probabilities are based on the London population, therefore they are additive for England across the English regions and for the UK across the constituent countries. There is a general pattern of reduced likelihood of leaving London between 2007 and 2009, with the exception of those aged 16-24 to most destinations. In the lower panel all increases are highlighted as are the greatest declines for each age group. Chart 3 presents the data shown in the lower panel of the table. Apart from the reductions in the small flows to Scotland and Northern Ireland the regions that have become relatively less attractive are the East, South East and South West. These are the regions that receive the highest flows from London and also exhibit some of the highest house prices outside London.

Table 2: Migration outflows and probabilities (per thousand population) from London to other UK regions: 2007 and 2009

2007 Outflows from London															
Origin	Age group	Destination													
		United Kingdom and Wales	England	North East	North West	Yorkshire and the Humber	East Midlands	West Midlands	East	South East	South West	Wales	Scotland	Northern Ireland	
London	0-15	41,885	40,601	39,858	491	1,781	1,314	1,984	2,044	11,977	16,955	3,312	743	988	274
	16-24	46,853	45,278	44,113	1,212	3,024	3,140	4,010	3,365	9,391	15,367	4,604	1,165	1,329	223
	25-44	108,443	103,463	101,199	1,498	5,328	3,998	4,621	5,086	28,634	43,069	8,965	2,264	3,955	944
	45-64	34,322	33,056	32,279	386	1,082	842	1,432	1,100	9,943	13,803	3,691	777	991	232
	65+	14,938	14,621	14,374	120	371	275	546	450	4,860	6,212	1,540	247	247	62
All ages	246,441	237,019	231,823	3,707	11,586	9,569	12,593	12,045	64,805	95,406	22,112	5,196	7,510	1,735	

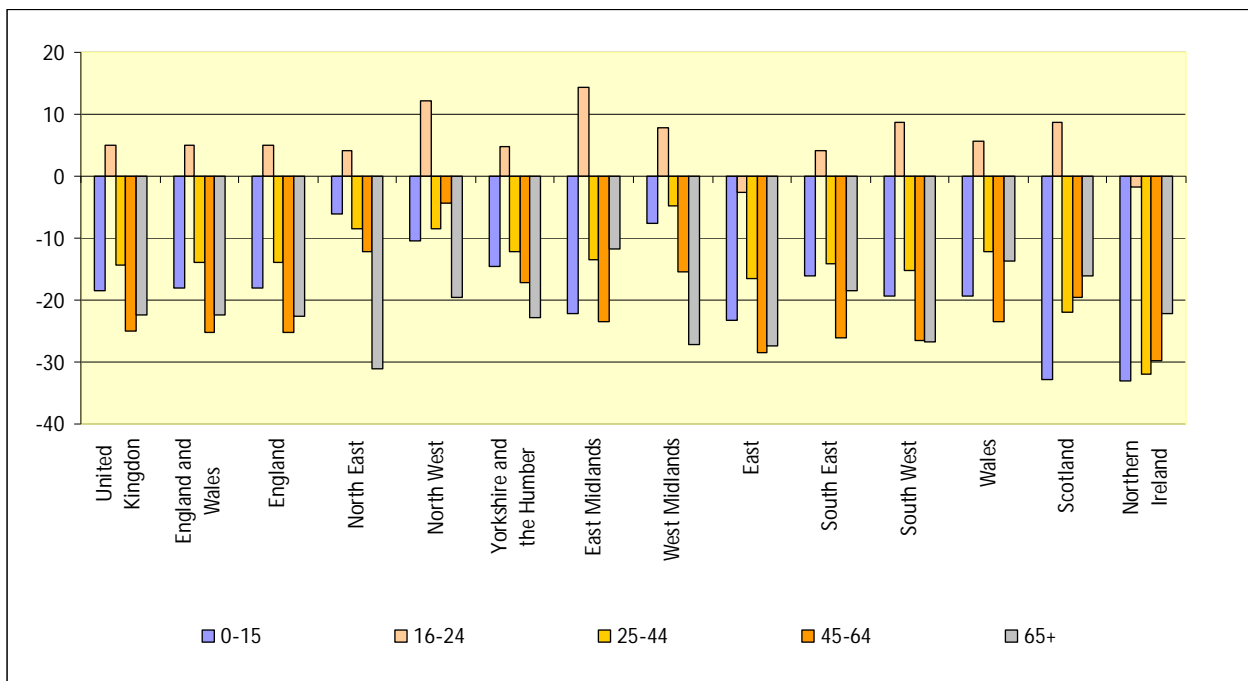
2009 Outflows from London															
Origin	Age group	Destination													
		United Kingdom and Wales	England	North East	North West	Yorkshire and the Humber	East Midlands	West Midlands	East	South East	South West	Wales	Scotland	Northern Ireland	
London	0-15	35,135	34,249	33,633	474	1,643	1,155	1,589	1,941	9,460	14,622	2,749	616	684	189
	16-24	48,231	46,586	45,379	1,237	3,326	3,223	4,495	3,558	8,958	15,674	4,908	1,207	1,415	215
	25-44	94,148	90,308	88,295	1,388	4,944	3,557	4,046	4,910	24,233	37,511	7,706	2,013	3,125	650
	45-64	27,001	25,963	25,339	356	1,087	733	1,152	978	7,476	10,705	2,852	624	837	171
	65+	11,771	11,502	11,286	84	303	215	489	332	3,583	5,136	1,144	216	210	49
All ages	216,286	208,608	203,932	3,539	11,303	8,883	11,771	11,719	53,710	83,648	19,359	4,676	6,271	1,274	

2007 Probabilities of moves out of London (per 1000 population)															
Origin	Age group	Destination													
		United Kingdom and Wales	England	North East	North West	Yorkshire and the Humber	East Midlands	West Midlands	East	South East	South West	Wales	Scotland	Northern Ireland	
London	0-15	28.8	27.9	27.4	0.3	1.2	0.9	1.4	1.4	8.2	11.6	2.3	0.5	0.7	0.2
	16-24	50.5	48.8	47.5	1.3	3.3	3.4	4.3	3.6	10.1	16.6	5.0	1.3	1.4	0.2
	25-44	39.1	37.3	36.5	0.5	1.9	1.4	1.7	1.8	10.3	15.5	3.2	0.8	1.4	0.3
	45-64	21.9	21.1	20.6	0.2	0.7	0.5	0.9	0.7	6.4	8.8	2.4	0.5	0.6	0.1
	65+	17.0	16.6	16.3	0.1	0.4	0.3	0.6	0.5	5.5	7.1	1.7	0.3	0.3	0.1
All ages	32.4	31.2	30.5	0.5	1.5	1.3	1.7	1.6	8.5	12.5	2.9	0.7	1.0	0.2	

2009 Probabilities of moves out of London (per 1000 population)															
Origin	Age group	Destination													
		United Kingdom and Wales	England	North East	North West	Yorkshire and the Humber	East Midlands	West Midlands	East	South East	South West	Wales	Scotland	Northern Ireland	
London	0-15	23.4	22.9	22.4	0.3	1.1	0.8	1.1	1.3	6.3	9.8	1.8	0.4	0.5	0.1
	16-24	53.0	51.2	49.9	1.4	3.7	3.5	4.9	3.9	9.9	17.2	5.4	1.3	1.6	0.2
	25-44	33.5	32.2	31.4	0.5	1.8	1.3	1.4	1.7	8.6	13.4	2.7	0.7	1.1	0.2
	45-64	16.4	15.8	15.4	0.2	0.7	0.4	0.7	0.6	4.5	6.5	1.7	0.4	0.5	0.1
	65+	13.2	12.9	12.6	0.1	0.3	0.2	0.5	0.4	4.0	5.8	1.3	0.2	0.2	0.1
All ages	27.9	26.9	26.3	0.5	1.5	1.1	1.5	1.5	6.9	10.8	2.5	0.6	0.8	0.2	

% Difference in outflow probabilities 2009-2007															
Origin	Age group	Destination													
		United Kingdom and Wales	England	North East	North West	Yorkshire and the Humber	East Midlands	West Midlands	East	South East	South West	Wales	Scotland	Northern Ireland	
London	0-15	-18.5	-18.0	-18.0	-6.2	-10.3	-14.6	-22.2	-7.7	-23.2	-16.2	-19.3	-19.4	-32.7	-33.0
	16-24	5.0	5.0	4.9	4.1	12.2	4.7	14.4	7.9	-2.7	4.1	8.8	5.7	8.6	-1.6
	25-44	-14.3	-13.8	-13.9	-8.5	-8.4	-12.2	-13.6	-4.7	-16.5	-14.0	-15.1	-12.2	-22.0	-32.0
	45-64	-25.1	-25.2	-25.3	-12.2	-4.4	-17.1	-23.4	-15.4	-28.4	-26.2	-26.4	-23.5	-19.6	-29.8
	65+	-22.3	-22.4	-22.6	-31.0	-19.5	-22.9	-11.7	-27.3	-27.3	-18.5	-26.8	-13.8	-16.2	-22.1
All ages	-13.9	-13.7	-13.7	-6.4	-4.3	-9.0	-8.4	-4.6	-18.7	-14.0	-14.2	-11.8	-18.1	-28.0	

Chart 3: Percentage change in outflow probabilities from London to other UK regions by broad age groups: 2007 to 2009



Discussion

Between the end of 2007 and the end of 2009 the UK was hit by the banking crisis and recession. At the same time the numbers of births continued the rising trend seen since 2001, but at a reduced pace. These factors have combined to influence the changing pattern of migration within the UK affecting London. During this period London was the only region to have an increased inflow from the rest of the UK, amounting to 14 thousand or nearly 9 per cent. At the same time the level of outflow to the rest of the country fell by over 30 thousand, or 12 per cent. The net effect was a reduction in the net migration loss to the rest of the UK of nearly 45 thousand, equivalent to well over 50 per cent. The net migration loss fell to 38 thousand, only about a third of the level in 2003-04 and similar to levels last seen in the early 1990s.

Analysing changes by age groups sheds some light on the changed dynamics of migration affecting London. In general the probability of migration to London from the rest of the UK increased over the two years at all ages except for those aged over 65, however this flow is only about 4 thousand persons a year, or 2.5 per cent of the total inflow. More significant are the flows at 16-24 and 25-44 that account for over 80 per cent of London's total inflow. At these ages both the numbers and likelihoods of moving to London increased by around 8 per cent overall.

Relatively few children move from the rest of the UK to London, however across the two years their numbers grew by 18 per cent to 17 thousand and the overall probability increased by over 17 per cent. As indicated above this may be a function of the increased number of pre-school children in the age group as the increases in the probabilities of adults, presumably including their parents, moving to London were much lower.

The increase in births in London has been at a faster pace than in most parts of the country, but there has been an absolute decline in the numbers of children moving out of London. The reduced probabilities of moving out are consistent with the changes in the probabilities of their parents moving. It appears that the movement of families out of London has been seriously affected by the difficulties in the owner occupied housing sector. The majority of families leaving London move

either within or into the owner occupied sector. However, the inflow of migrants to London, being generally young adults, tends to have a higher relationship to the increasing private rented sector.

The reduction in the likelihood of leaving London has had most impact on the older workers (45-64) and the retired, where the combined numbers have fallen by 10.5 thousand (21 per cent). For the 45-64s the reductions in probabilities are most apparent for the East, South East and South West – the main destinations. The smaller numbers of moving pensioners means more volatility in the change in the likelihoods of leaving London for particular regions, but of the main destinations it is the East and South West that have seen the greatest reductions.

The numbers leaving London have started to rise again in the second half of 2009. It remains to be seen how the flows have changed since the end of 2009 and whether the age profile of those leaving London returns to the pre-2007 pattern. Will any increase be led by the main worker ages or will pensioners become more confident of their circumstances and start to move in greater numbers? The Intelligence Unit will continue to monitor the overall statistics for London on a quarterly basis and report any significant changes.