

2002-2008 Revised Mid-Year Population Estimates

Background

On 13 May 2010 the Office for National Statistics (ONS) issued revised mid-2002 to mid-2008 population estimates for all local authorities in England and Wales. These revisions were made as a result of improvements made to the mid-year population estimate data inputs and methodology, as part of the Migration Statistics Improvement Programme. These improvements were made following user engagement on improved methods and their indicative impacts. The revised estimates will be used in the 2008-based subnational population projections that were released on 27 May 2010.

Information on user engagement, methodology changes, the impact of the improvements and further supporting evidence, can be found at:

<http://www.ons.gov.uk/about-statistics/methodology-and-quality/imps/mig-stats-improve-prog/comm-stakeholders/improvements-2008-pop-est/index.html>

The new methods change the way in which international and internal (within England and Wales) migration are calculated and distributed at local authority level. The mid-year population estimate for 2001 has not been revised. It is based on the 2001 Census and the revisions are to migration that has occurred after mid-2001. All years between 2002 and 2008 have been revised using:

- A new method for distributing international immigrants to local authorities, replacing sole use of 2001 Census data with a model based distribution using a range of administrative and other data. The administrative sources used in the modelling include National Insurance numbers (NINOs) and registrations with GPs (where the previous residence was abroad) sometimes called 'Flag 4s'. Administrative data gives a better indicator of more recent migration, for example, from EU accession countries, which was not reflected in the 2001 Census. This change does not affect the number of immigrants but their distribution across local authorities (within an intermediate geography of grouped local authorities within a region).
- A new modelling method to estimate the number and distribution of origins of emigrants (international outflow).
- Data from the Higher Education Statistics Agency (HESA) to estimate internal migration of students for study and post study. This improves internal migration estimates as these moves are often not caught by other administrative sources that are used to estimate internal migration. A further adjustment is made to remove any double counting that occurs.
- Small adjustments have been made to the Visitor Switchers (VS) flows and improved and new data from the Republic of Ireland has been incorporated into the revised estimates. Irish Census data have been used to improve estimates of moves between England & Wales and the Republic of Ireland.

For many areas the impact of these revisions is small; however in a few areas the change to the mid-year estimates is substantial. London in particular has a number of the local authorities that have seen the greatest changes to their mid-year estimates. Seven out of the top ten increases in the revised 2008 population estimates are in London boroughs (Westminster, Harrow, Hounslow, Richmond, Lambeth, Tower Hamlets and Redbridge), out of all 376 local authorities in England and Wales. Furthermore, four of

the top ten decreases in the revised 2008 population estimates are in London boroughs (Brent, Kensington and Chelsea, Camden and Newham).

The 2009 MYEs, due for release on 24th June 2010, will be produced using this new methodology, so these revised MYEs provide a consistent back series.

Regional Changes

Table 1 presents the current series of mid-year population estimates for the UK countries and Government Office Regions (GORs). London is the second most populous GOR in every year between 2002 and 2008, after the South East region. Between 2001 and 2008 the largest population increase was in Greater London (345,900 people), narrowly followed by the South East (345,100). London's population was an estimated 7.67 million people in 2008; an increase of 4.7 per cent from a population of 7.32 million in 2001. However, the East and East Midlands regions had the largest percentage increases in their population, 5.9 and 5.7 per cent respectively.

Table 1: Mid-year population estimates, UK countries and GORs, 2002-2008 (thousands)

	2001	2002	2003	2004	2005	2006	2007	2008
United Kingdom	59,113.5	59,318.8	59,552.2	59,841.9	60,235.5	60,584.3	60,985.7	61,398.2
Great Britain	57,424.2	57,622.1	57,849.6	58,131.6	58,511.1	58,842.7	59,226.5	59,623.2
England & Wales	52,360.0	52,567.3	52,792.2	53,053.2	53,416.3	53,725.8	54,082.3	54,454.7
England	49,449.7	49,649.1	49,863.3	50,109.7	50,466.2	50,763.9	51,106.2	51,464.6
Wales	2,910.2	2,918.2	2,928.8	2,943.5	2,950.1	2,961.9	2,976.1	2,990.1
Scotland	5,064.2	5,054.8	5,057.4	5,078.4	5,094.8	5,116.9	5,144.2	5,168.5
Northern Ireland	1,689.3	1,696.6	1,702.6	1,710.3	1,724.4	1,741.6	1,759.1	1,775.0
North East	2,540.1	2,540.4	2,540.4	2,540.9	2,547.9	2,552.7	2,560.4	2,570.6
North West	6,773.0	6,776.9	6,798.9	6,818.7	6,838.9	6,852.0	6,863.7	6,874.1
Yorkshire and the Humber	4,976.6	5,002.2	5,029.2	5,066.9	5,110.8	5,146.4	5,181.8	5,217.5
East Midlands	4,189.6	4,221.6	4,254.2	4,291.5	4,327.1	4,362.6	4,397.0	4,429.4
West Midlands	5,280.7	5,293.9	5,309.8	5,323.9	5,347.2	5,362.2	5,378.4	5,408.4
East	5,400.5	5,429.8	5,468.4	5,500.4	5,551.2	5,593.2	5,648.7	5,717.4
London	7,322.4	7,368.9	7,379.7	7,413.1	7,484.9	7,546.6	7,602.2	7,668.3
South East	8,023.4	8,043.0	8,079.9	8,114.6	8,172.9	8,224.3	8,295.5	8,368.5
South West	4,943.4	4,972.5	5,002.9	5,039.6	5,085.3	5,123.8	5,178.5	5,210.4
Wales	2,910.2	2,918.2	2,928.8	2,943.5	2,950.1	2,961.9	2,976.1	2,990.1

Figure 1 shows how the revised mid-year population estimates and the previous population estimates for Greater London diverge over time. The 2001 base year estimate has not been revised, so both set of estimates start at the same point (7.32 million people). After this the estimates increasingly diverge over time as the differences between each year accumulate. By 2008 London's population is estimated to be 48,500 people greater than the previous population estimate for mid-2008.

Table 2 shows the differences between the new revised estimates and the previous estimates for the UK countries and GORs (revised minus previous estimate). London has had the largest revisions in each year out of all the regions. For most GORs the revised populations are lower than the previous population estimates. South East and East region's revised population estimates are 11,800 and 11,300 people lower, respectively, in 2008 compared with their previous population estimates. These are the next biggest regional differences after London between the revised and previous estimates. For all other regions the difference is under 5,000 people in 2008.

Mid-year population estimates for Scotland and Northern Ireland are produced by General Registrar's Office for Scotland (GROS) and Northern Ireland Statistics Research Agency (NISRA) respectively and they have not revised their population estimates. Hence, Table 2 shows there is no change for Scotland and Northern Ireland's population estimates.

Figure 1: Difference between previous and revised mid-year estimates, Greater London

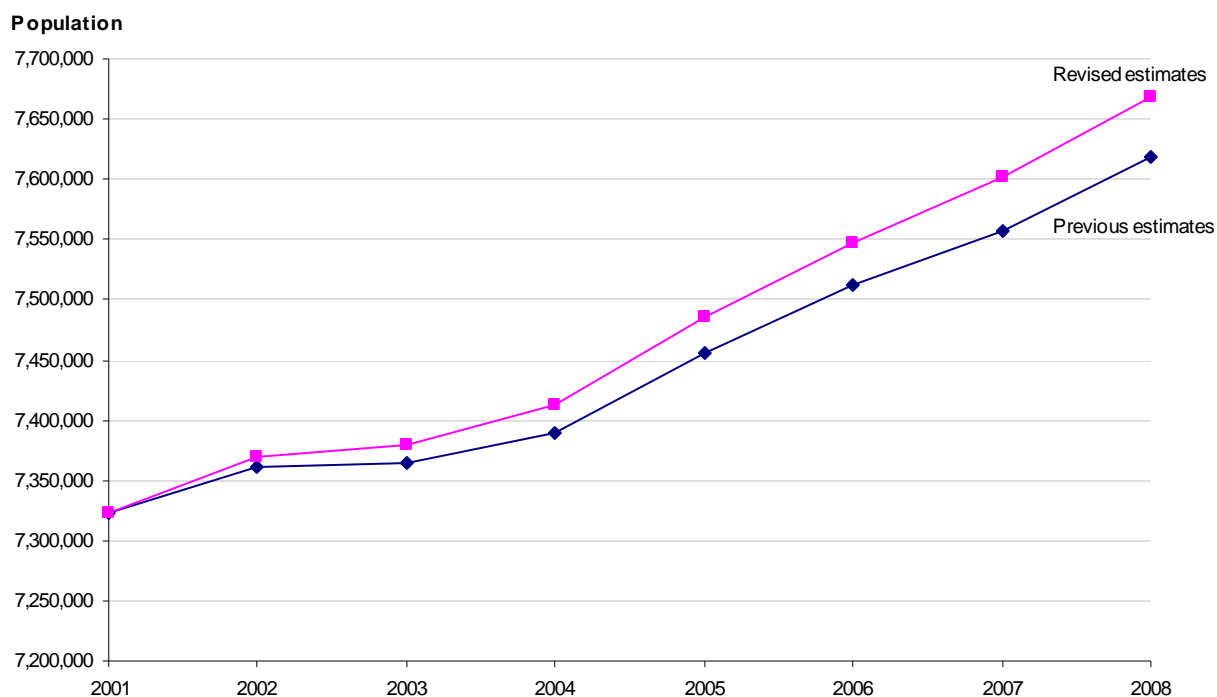


Table 2: Difference between revised and previous population estimates (revised minus previous), 2002-2008, UK countries and GORs

	2002	2003	2004	2005	2006	2007	2008
United Kingdom	-4,700	-5,200	-4,000	-2,900	-3,000	10,300	15,100
Great Britain	-4,700	-5,200	-4,000	-2,900	-3,000	10,300	15,100
England & Wales	-4,700	-5,200	-4,000	-2,900	-3,000	10,300	15,100
England	-3,200	-2,800	-1,000	500	900	14,100	18,400
Wales	-1,500	-2,300	-3,000	-3,400	-4,000	-3,800	-3,300
Scotland	n/a	n/a	n/a	n/a	n/a	n/a	n/a
Northern Ireland	n/a	n/a	n/a	n/a	n/a	n/a	n/a
North East	-500	-1,000	-1,200	-1,800	-3,000	-4,100	-4,800
North West	-1,200	-1,600	-800	-900	-1,100	-600	-1,600
Yorkshire and the Humber	300	1,700	2,900	3,300	4,000	4,500	4,300
East Midlands	-100	0	100	-500	-1,600	-2,600	-3,600
West Midlands	-1,200	-1,900	-2,800	-3,500	-4,500	-3,500	-2,700
East	-3,000	-6,300	-10,600	-11,900	-13,300	-12,300	-11,300
London	7,300	15,600	24,000	28,900	34,200	45,300	48,500
South East	-3,900	-7,100	-10,500	-11,700	-13,500	-13,100	-11,600
South West	-900	-2,100	-2,000	-1,400	-300	500	1,200
Wales	-1,500	-2,300	-3,000	-3,400	-4,000	-3,800	-3,300

Table 3 shows the effect the different adjustments of the revisions had on population estimates by region. In London the greatest impact on population estimates was people added to the population as a result of moving to London after studying elsewhere. By 2008 there are 56,000 more people in London's population estimate due to this adjustment. London also gained a small number of students moving into London for study (5,000 people). However, the counter adjustment to avoid double counting means 23,500 of these additional people are then removed. So in total an additional 37,600 people are in London's mid-2008 population due to adjustments for student migration (pre and post study). This accounts for 77.5 per cent of London's total revision between 2002 and 2008.

Table 3: Cumulative impact of revisions by type of adjustment, Government Office Regions, 2002-08

	Student adjustment by type of flow (Cumulative revision 2002-08)				International Migration (Cumulative revision 2002-08)			Other changes (Cumulative revision 2002-08)	Total cumulative revision 2002-08
	Students moving for study	Post Study	Counter adjustment	Total Student Adjustment	Inflow	Outflow	Balance		
England & Wales	-	-	-	-	1,500	-6,800	8,300	6,700	15,100
England	-1,800	9,000	-2,900	4,300	700	-6,800	7,500	6,600	18,400
North East	6,000	-11,500	1,500	-4,000	200	1,000	-800	-	-4,800
North West	7,600	-10,800	600	-2,600	-300	-	-200	1,300	-1,600
Yorkshire and the Humber	17,300	-10,800	-2,700	3,900	-900	-900	-100	500	4,300
East Midlands	5,800	-8,600	-700	-3,500	400	300	-	-100	-3,600
West Midlands	-1,800	-4,500	2,100	-4,200	800	-700	1,500	-	-2,700
East	#####	3,500	9,200	-12,900	400	-700	1,200	500	-11,300
London	5,200	56,000	-23,500	37,600	#####	-9,100	8,100	2,800	48,500
South East	#####	-3,100	9,400	-11,400	700	2,100	-1,400	1,200	-11,600
South West	1,400	-1,100	1,100	1,400	500	1,300	-700	500	1,200
Wales	1,800	-9,000	2,900	-4,300	800	-	800	200	-3,300

The total student adjustment had a larger effect in all GORs in comparison with any of the migration flow adjustments. Yorkshire and the Humber had largest number of people added (17,300 people) as students moving to the region for study. While in the East region 25,000 people were subtracted from the population to adjust for students leaving to study in a different region. The South East also lost population (17,700 people) to adjust for students migrating to study.

Some small adjustments were made to London's international migration flows. Notably, London's international outflow was lowered by 9,100 people. This means less people were estimated to have emigrated out of London and so adds people to the revised population estimates for London. The migration adjustments for other GORs are comparatively small.

Figure 2: Difference between previous and revised mid-2008 population by age, Greater London (revised minus previous estimate)

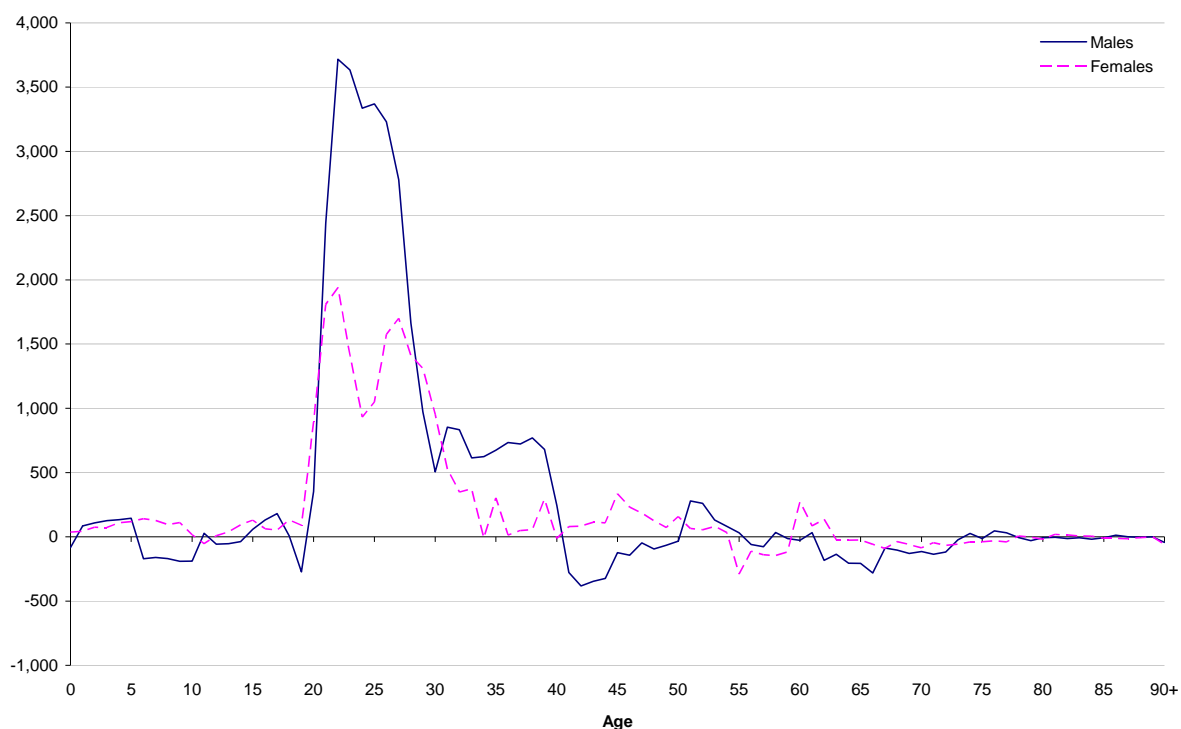


Figure 2 shows the difference between the previous and revised mid-2008 population estimates by single year of age. The chart shows that the revisions to the population estimates follow an age specific pattern. The revisions have added more men and women aged 20 to 30 to the population, i.e. in student and post study ages. This is because young people are less likely to register and re-register with a new doctor each time they move. The use of HESA data in the revised population estimate methodology means these migrants have now been picked up. The majority of the population added to London in the revised estimates came from adjusting for post studying moves so the age profile of the additional population will reflect this. As a result the differences between the population estimates at other all other ages are small.

Figure 2 also shows that 13,900 (gross) (10,400 net) more men than women have been added to London's population in the revisions. This is to be expected as young men are less likely than women of the same age to register with a new doctor when they move. Therefore these moves of young men will not have been captured by the previous methodology that only used NHS GP registration data. So the use of HESA data has added more men to London's population than women.

Borough Results

Table 4 presents the revised population estimates for mid-2002 to mid-2008 for the London boroughs. In mid-2008 Croydon had the largest population (341,200) of all London boroughs, followed by Barnet (338,100 people).

Table 4: Mid-year population estimates, London boroughs, 2001-08 (thousands)

	2001	2002	2003	2004	2005	2006	2007	2008
Greater London	7,322.4	7,368.9	7,379.7	7,413.1	7,484.9	7,546.6	7,602.2	7,668.3
Inner London	2,859.4	2,888.7	2,894.5	2,911.6	2,947.7	2,975.7	3,003.4	3,030.1
Camden	202.6	205.7	207.7	212.8	218.4	221.5	223.9	226.5
City of London	7.4	7.7	7.9	8.3	8.7	9.4	10.5	11.3
Hackney	207.2	209.0	208.5	207.8	208.6	209.4	210.5	212.8
Hammersmith & Fulham	169.4	170.9	169.3	169.0	169.1	168.6	169.1	168.6
Haringey	221.3	223.4	222.9	223.4	224.4	225.4	224.7	225.3
Islington	179.4	180.3	181.4	181.8	184.6	185.3	186.8	188.5
Kensington & Chelsea	162.2	164.1	165.8	166.7	169.6	169.6	170.9	171.1
Lambeth	273.4	272.3	270.7	272.1	274.4	277.1	279.3	281.4
Lewisham	254.3	253.5	251.6	252.1	254.3	256.7	258.9	262.0
Newham	249.4	252.9	251.4	247.3	243.3	241.4	241.4	242.4
Southwark	256.7	257.4	257.4	260.6	265.9	273.0	279.1	283.0
Tower Hamlets	201.1	207.3	209.2	212.0	214.1	217.2	221.8	226.8
Wandsworth	271.7	273.6	274.2	275.0	278.2	281.1	282.8	283.7
Westminster	203.3	210.7	216.4	222.9	234.2	240.1	243.7	246.6
Outer London	4,463.0	4,480.2	4,485.2	4,501.5	4,537.2	4,570.9	4,598.8	4,638.3
Barking & Dagenham	165.7	166.6	166.7	166.3	167.0	167.9	169.1	171.5
Barnet	319.5	321.0	322.8	325.2	329.1	333.0	335.6	338.1
Bexley	218.8	219.0	219.7	220.5	221.9	222.6	223.4	225.0
Brent	269.6	266.7	261.9	258.8	257.6	257.1	255.1	254.5
Bromley	296.2	297.3	298.5	299.3	302.1	303.9	305.6	308.0
Croydon	335.1	334.7	334.2	334.7	335.5	336.8	338.4	341.2
Ealing	307.3	308.0	305.5	306.3	307.3	308.3	309.1	312.1
Enfield	277.3	280.5	281.3	281.5	283.4	285.5	287.0	289.0
Greenwich	217.5	219.7	220.7	221.9	223.3	223.6	223.6	223.7
Harrow	210.0	211.7	212.6	214.6	218.7	221.3	223.3	225.4
Havering	224.7	225.0	225.2	225.8	227.0	228.6	230.3	232.3
Hillingdon	245.6	247.0	248.2	248.9	251.7	253.9	255.3	258.1
Hounslow	216.0	216.6	215.6	218.1	221.5	224.6	228.1	230.2
Kingston upon Thames	149.0	150.9	152.2	155.0	157.7	160.3	162.3	164.6
Merton	191.1	191.7	191.5	192.4	195.0	197.6	199.8	202.8
Redbridge	241.9	244.2	247.3	248.6	251.2	255.1	259.3	263.8
Richmond upon Thames	174.3	175.9	178.2	180.9	183.6	185.5	186.2	187.2
Sutton	181.5	181.9	182.5	183.0	184.7	185.9	187.5	189.5
Waltham Forest	222.0	221.9	220.4	219.4	218.7	219.2	219.8	221.4

Westminster had the largest population increase, 43,300 people (21.3 per cent), between 2001 and 2008 of all London boroughs. The second largest increase, of 26,300 people (10.2 per cent), was in Southwark. The City of London had the smallest population increase of 3,900 people. However, the City is an anomalous area within London and furthermore this actually represents a 52.7 per cent increase in its population. The population of four London boroughs was estimated to have decreased between 2001 and 2008, these are: Brent, Newham, Hammersmith and Fulham, and Waltham Forest. The largest decline was in Brent where the population fell by 15,100 people (-5.6 per cent) between 2001 and 2008.

Table 5: Difference between revised and previous population estimates (revised minus previous), London boroughs, 2002-2008

	#####	#####	#####	#####	#####	#####	#####
Greater London	7,300	15,600	24,000	28,900	34,200	45,300	48,500
Inner London	2,400	3,000	4,900	3,500	2,800	3,100	400
Camden	-400	-2,200	-2,800	-4,400	-6,000	-8,000	-9,200
City of London	200	500	700	1,000	1,700	2,500	3,400
Hackney	600	900	1,700	1,500	1,100	800	600
Hammersmith & Fulham	700	400	-300	-1,900	-2,800	-3,400	-3,600
Haringey	-200	-200	500	300	-200	0	-900
Islington	-300	0	300	400	-200	-1,000	-2,400
Kensington & Chelsea	-900	-2,300	-4,600	-6,200	-8,400	-7,700	-9,300
Lambeth	900	1,900	3,400	4,200	5,100	6,000	6,900
Lewisham	300	800	500	1,100	1,000	400	500
Newham	-600	-1,900	-4,600	-6,400	-7,000	-8,200	-7,100
Southwark	1,100	1,400	1,300	1,900	3,800	4,700	5,000
Tower Hamlets	800	1,600	3,900	4,700	4,400	6,500	6,300
Wandsworth	1,200	2,300	2,400	1,800	2,200	1,000	-300
Westminster	-900	-400	2,500	5,600	8,200	9,500	10,600
Outer London	4,900	12,600	19,100	25,400	31,400	42,200	48,100
Barking & Dagenham	200	200	1,000	1,500	2,200	2,200	2,600
Barnet	900	2,000	2,200	3,000	4,500	5,900	6,600
Bexley	200	200	700	900	1,000	1,300	1,700
Brent	-2,500	-5,800	-10,000	-12,700	-14,300	-14,800	-16,100
Bromley	800	2,200	3,100	4,200	4,800	4,900	5,400
Croydon	-600	-200	-1,200	-300	-100	-1,100	-600
Ealing	400	400	2,200	1,700	1,900	3,800	3,100
Enfield	-100	-100	-600	0	200	1,900	1,400
Greenwich	500	1,200	1,700	1,700	900	400	800
Harrow	300	1,500	2,800	4,700	6,700	8,700	9,200
Havering	100	200	600	700	1,300	1,900	2,200
Hillingdon	800	1,900	2,900	3,900	3,900	4,600	4,900
Hounslow	800	1,500	3,700	5,000	6,000	7,500	7,700
Kingston upon Thames	1,000	1,800	3,200	3,800	4,400	4,400	4,500
Merton	-100	100	100	-400	-200	600	1,400
Redbridge	300	1,000	1,300	2,200	3,100	4,900	6,200
Richmond upon Thames	1,600	4,100	5,200	5,600	6,000	6,300	7,100
Sutton	100	500	1,100	1,600	1,500	1,600	1,800
Waltham Forest	100	0	-600	-1,600	-2,500	-2,500	-1,700

Table 5 shows the difference for London boroughs between the revised and previous population estimates, for 2002 to 2008. In 23 boroughs the revised 2008 population estimate is higher than their previous 2008 population estimate, and in 10 boroughs it is lower. Brent has the greatest difference between its revised and previous mid-2008 population estimates (16,100 people lower). The second biggest difference and the largest increase, compared with its previous population estimate, is in Westminster (10,600 people higher). The smallest difference between the two sets of 2008 estimates is in Wandsworth (300 people lower). In total six boroughs had change of less than plus or minus 1,000 people in the 2008 estimate.

Within Inner London there is a mixture of increases and decreases in the borough's revised 2008 population estimates, compared with their previous estimates. Whereas in Outer London boroughs the revised population estimates are mostly larger than the previous 2008 population estimate. Therefore, Outer London's overall 2008 population estimate has increased (48,100 additional people), while there is little difference between the revised and previous population estimates for Inner London (400 people).

However, there are some big differences at a borough level within Inner London. For example, Westminster's revised 2008 population estimate has an additional 10,600 people compared with its previous estimate. Whereas the revised 2008 population estimates for Kensington and Chelsea and Camden have 9,300 and 9,200 fewer people compared with their previous estimates.

Figure 3: Population change between 2001 and 2008, previous and revised mid-year estimates, London Boroughs

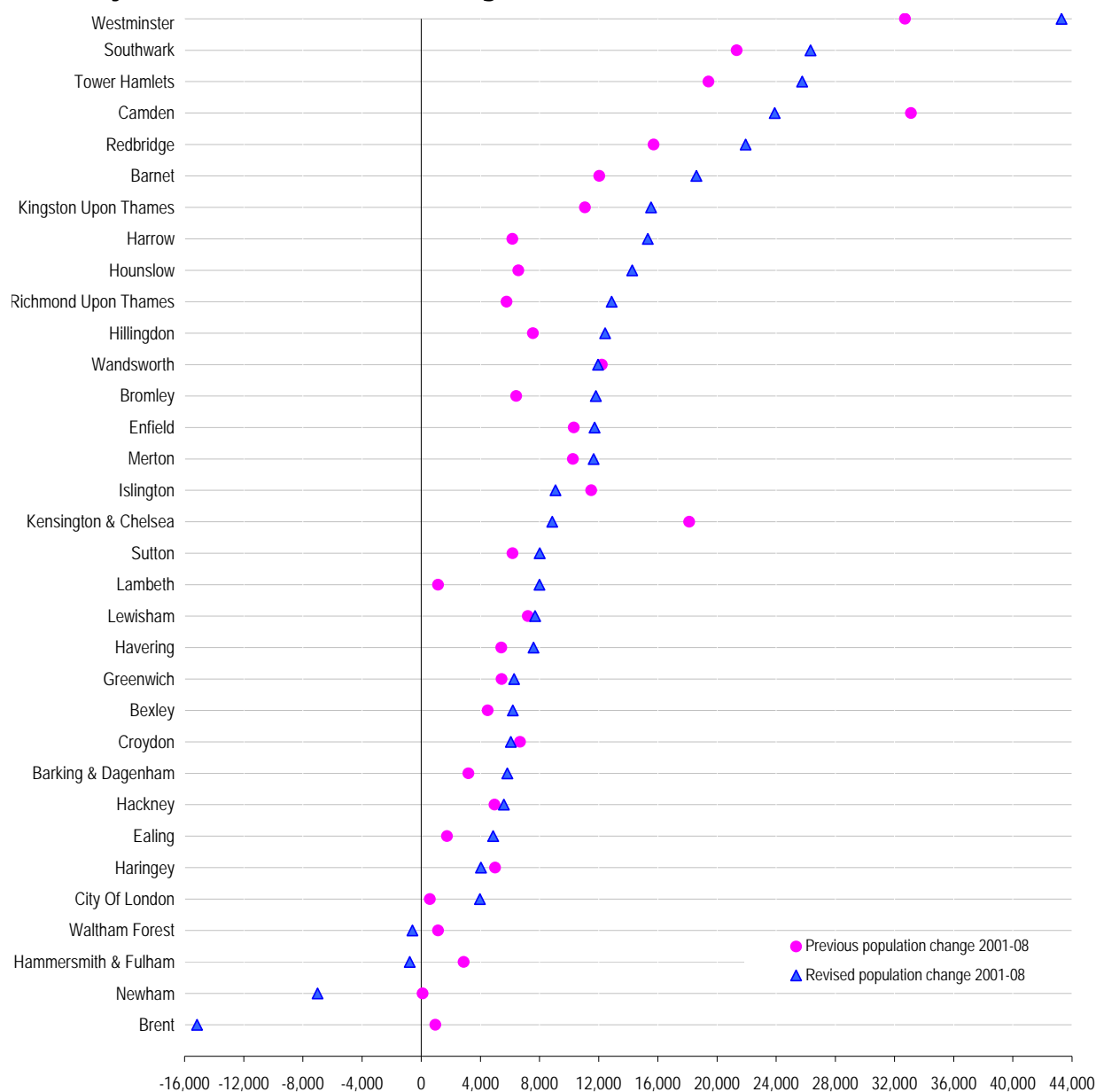


Figure 3 shows population change between 2001 and 2008 in both the revised and previous population projections for London boroughs. In the revised estimates Brent's population declines by 15,100 people between 2001 and 2008. Previously it had been estimated that its population in 2008 was slightly higher than in 2001 (1,000 person increase). In four boroughs (Waltham Forest, Hammersmith and Fulham, Newham and Brent) the direction of population change has reversed. In all four cases the population of the area is now estimated to have declined between 2001 and 2008, whereas previously it was estimated to have increased.

Figure 3 shows there are a group of boroughs where the revised population change is only slightly different from that in previous estimates (e.g. Lewisham, Wandsworth), and a second group where population change is notably higher (e.g.). There are only two boroughs (Brent and Newham) where the revisions mean that population change is significantly lower than before, and is now estimated to be negative.

Table 6 shows the effect the different adjustments of the revisions had on population estimates for each London borough. Inner London gained population in the revisions from student adjustment, due to both students moving to some Inner London boroughs for study and to some Inner boroughs post study. The largest student adjustment in London was in Southwark, where it added 4,800 people to the population estimate. There are four boroughs student adjustment over 4,000 people: Southwark, Wandsworth, Tower Hamlets and Lambeth.

Inner London also lost people in the revisions due to adjustments to borough international migration flows. In some inner boroughs international inflow decreased (e.g. Newham) whereas in other Inner boroughs the international outflow increased (e.g. Islington); both result in a net decline in international migration in the revised estimates compared with previous estimates. In particular Camden and Kensington and Chelsea's revisions resulted in significant decreases the net migration

The increase in Outer London's revised population, compared with its previous population estimate, is nearly entirely due to the international outflow from Outer London boroughs decreasing in the revisions. The notable exception being Brent, where the revised population estimate is lower than previously estimated primarily because of a large decrease in international inflow (12,000 less migrants) into the borough in the revised estimates.

The appendix tables contained at the end of this Update give further detail of the revised components of change for Greater London and the boroughs.

Data availability

The revised mid-year population estimates are available on the ONS website at:

<http://www.statistics.gov.uk/statbase/Product.asp?vlnk=15106>

More detailed data is available on request from the Population Estimates Unit. Contact on popest@ons.gsi.gov.uk

Further details on ONS's Improving Migration and Population Statistics programme are available at:

<http://www.ons.gov.uk/about-statistics/methodology-and-quality/imps/index.html>

Table 6: Cumulative impact of revisions by type of adjustment, London boroughs, 2002-08

	Student adjustment by type of flow (Cumulative revision 2002-08)				International Migration (Cumulative revision 2002-08)			Other changes (Cumulative revision 2002-08)	Total cumulative revision 2002-08
	Students moving for study	Post Study	Counter adjustment	Total Student Adjustment	Inflow	Outflow	Balance		
Greater London	5,200	56,000	-23,500	37,600	-1,000	-9,100	8,100	2,800	48,500
Inner London	23,400	30,400	-21,800	32,100	-900	30,600	-31,500	-100	400
Camden	6,000	-200	-2,800	3,000	-1,200	10,500	-11,800	-400	-9,200
City of London	100	200	-100	200	1,900	-1,100	3,000	200	3,400
Hackney	300	1,500	-800	1,000	800	1,300	-500	100	600
Hammersmith and Fulham	-200	2,700	-900	1,600	-400	4,700	-5,100	-100	-3,600
Haringey	600	2,700	-1,300	2,000	-3,400	-700	-2,700	-200	-900
Islington	4,300	1,900	-2,700	3,500	2,000	7,700	-5,700	-200	-2,400
Kensington and Chelsea	-100	1,000	-400	500	-2,900	6,400	-9,300	-400	-9,300
Lambeth	300	6,200	-2,300	4,100	5,300	3,000	2,200	500	6,900
Lewisham	200	1,700	-700	1,200	-500	200	-700	-	500
Newham	-300	700	-200	200	-6,600	-	-6,600	-700	-7,100
Southwark	6,100	2,000	-3,300	4,800	-2,900	-3,200	300	-100	5,000
Tower Hamlets	4,500	2,200	-2,500	4,200	4,000	2,300	1,700	400	6,300
Wandsworth	1,300	5,900	-2,700	4,600	-600	4,300	-4,800	-	-300
Westminster	500	2,000	-1,000	1,400	3,700	-4,700	8,500	700	10,600
Outer London	-18,200	25,500	-1,700	5,600	-200	-39,700	39,600	3,000	48,100
Barking and Dagenham	-800	300	100	-300	3,500	900	2,600	300	2,600
Barnet	-2,500	3,200	-200	500	-400	-6,100	5,700	300	6,600
Bexley	-1,400	400	400	-600	900	-1,200	2,100	200	1,700
Brent	-2,300	2,700	100	400	-12,000	3,200	-15,200	-1,300	-16,100
Bromley	-2,400	1,900	400	-100	-600	-5,700	5,100	300	5,400
Croydon	-3,200	2,400	400	-400	-300	-100	-200	-	-600
Ealing	-3,000	3,500	100	600	1,900	-300	2,200	400	3,100
Enfield	-600	900	-100	300	-700	-1,900	1,100	-	1,400
Greenwich	2,600	500	-1,300	1,800	1,100	2,200	-1,000	100	800
Harrow	-1,300	1,600	-100	200	700	-7,900	8,500	400	9,200
Havering	-1,600	800	400	-400	1,100	-1,300	2,400	200	2,200
Hillingdon	1,000	500	-700	800	-300	-4,200	3,800	300	4,900
Hounslow	-500	900	-200	300	5,100	-1,800	6,800	600	7,700
Kingston upon Thames	5,000	-300	-1,700	3,000	700	-700	1,400	200	4,500
Merton	-900	1,800	-300	600	-2,600	-3,400	800	-100	1,400
Redbridge	-2,900	1,100	700	-1,000	400	-6,400	6,800	400	6,200
Richmond upon Thames	-600	1,300	-200	500	-2,100	-8,200	6,200	400	7,100
Sutton	-1,800	900	400	-500	700	-1,300	2,100	200	1,800
Waltham Forest	-1,200	1,000	100	-100	2,800	4,500	-1,700	100	-1,700

Annex Table 1: Detailed components of change, Greater London, mid-2007 to mid-2008

Mid-2007 Population		7,602,240
Births 2007-2008		127,640
Deaths 2007-2008		49,940
Natural Change		<u>77,700</u>
Internal Migration 2007-2008	In	192,200
	Out	259,850
	Net	<u>-67,650</u>
International Migration (International Passenger Survey)	In	135,960
	Out	91,170
	Net	44,790
Republic of Ireland (Eire) Migration	In	1,710
	Out	3,720
	Net	-2,020
Asylum Seekers	In	8,070
	Out	3,270
	Net	4,800
Visitor Switchers	In	10,570
	Out	2,560
	Net	8,010
Total International Migration 2007-2008	In	156,300
	Out	100,720
	Net	<u>55,570</u>
Change in Armed Forces and Foreign Armed Forces		-680
Change in boarding school pupils		-110
Change in prisoners		-70
Boundary change adjustment		0
Reconciliation adjustment		1,330
Other Changes		<u>470</u>
Migration and other changes		<u><u>-11,610</u></u>
Mid-2008 Population		7,668,330

Rounded to the nearest ten

Annex Table 2: Components of Change, London boroughs, mid-2007 to mid-2008 (thousands)

	Mid-2007 population	Live births	Deaths	Natural change	Net migration & other changes	Total change	Mid-2008 population
United Kingdom	60,985.7	790.5	570.0	220.5	192.1	412.5	61,398.2
England and Wales	54,082.3	706.1	500.2	205.9	166.5	372.4	54,454.7
Greater London	7,602.2	127.6	49.9	77.7	-11.6	66.1	7,668.3
Inner London	3,003.4	52.7	16.7	36.0	-9.4	26.6	3,030.1
Camden	223.9	3.1	1.2	1.8	0.7	2.5	226.5
City of London	10.5	0.1	0.0	0.0	0.8	0.8	11.3
Hackney	210.5	4.4	1.1	3.3	-1.0	2.4	212.8
Hammersmith and Fulham	169.1	2.7	1.0	1.8	-2.3	-0.5	168.6
Haringey	224.7	4.3	1.2	3.1	-2.5	0.6	225.3
Islington	186.8	2.9	1.2	1.7	-0.1	1.6	188.5
Kensington and Chelsea	170.9	2.2	0.9	1.4	-1.2	0.1	171.1
Lambeth	279.3	4.9	1.5	3.4	-1.3	2.1	281.4
Lewisham	258.9	4.9	1.8	3.1	0.0	3.1	262.0
Newham	241.4	6.1	1.4	4.7	-3.7	1.0	242.4
Southwark	279.1	5.0	1.5	3.5	0.5	4.0	283.0
Tower Hamlets	221.8	4.2	1.1	3.1	1.9	5.0	226.8
Wandsworth	282.8	5.0	1.7	3.3	-2.5	0.9	283.7
Westminster	243.7	2.9	1.1	1.8	1.1	2.9	246.6
Outer London	4,598.8	74.9	33.3	41.7	-2.2	39.5	4,638.3
Barking and Dagenham	169.1	3.5	1.4	2.1	0.3	2.4	171.5
Barnet	335.6	5.2	2.4	2.8	-0.4	2.5	338.1
Bexley	223.4	3.0	1.9	1.2	0.4	1.6	225.0
Brent	255.1	4.9	1.5	3.3	-4.0	-0.7	254.5
Bromley	305.6	4.0	2.7	1.3	1.1	2.4	308.0
Croydon	338.4	5.5	2.4	3.0	-0.3	2.7	341.2
Ealing	309.1	5.6	1.9	3.7	-0.7	3.1	312.1
Enfield	287.0	5.0	2.0	2.9	-0.9	2.0	289.0
Greenwich	223.6	4.4	1.8	2.7	-2.5	0.2	223.7
Harrow	223.3	3.2	1.5	1.7	0.3	2.1	225.4
Havering	230.3	2.7	2.2	0.5	1.5	2.0	232.3
Hillingdon	255.3	4.1	1.9	2.2	0.5	2.7	258.1
Hounslow	228.1	4.3	1.4	2.8	-0.7	2.1	230.2
Kingston upon Thames	162.3	2.2	1.1	1.1	1.2	2.3	164.6
Merton	199.8	3.3	1.3	2.1	0.9	2.9	202.8
Redbridge	259.3	4.1	1.8	2.3	2.2	4.5	263.8
Richmond upon Thames	186.2	2.9	1.2	1.7	-0.8	1.0	187.2
Sutton	187.5	2.6	1.5	1.0	1.0	2.0	189.5
Waltham Forest	219.8	4.5	1.5	3.0	-1.4	1.6	221.4

Annex Table 3: Internal migration flows, London boroughs, mid 2001-mid 02 to mid 2007- mid 2008 (thousands)

	2001-02			2002-03			2003-04			2004-05			2005-06			2006-07			2007-08		
	In	Out	Net	In	Out	Net	In	Out	Net	In	Out	Net	In	Out	Net	In	Out	Net	In	Out	Net
Inner London																					
Camden	18.10	19.88	-1.78	18.69	20.82	-2.13	19.44	20.53	-1.08	19.47	20.37	-0.90	19.32	20.70	-1.39	19.97	22.11	-2.15	18.83	22.50	-3.68
City of London	0.78	0.70	0.07	0.82	0.80	0.03	0.92	0.79	0.13	0.85	0.77	0.08	0.87	0.77	0.10	0.95	0.76	0.19	0.73	0.76	-0.03
Hackney	13.77	17.85	-4.08	13.72	19.59	-5.87	13.06	19.57	-6.51	13.74	18.74	-5.00	14.15	18.33	-4.19	14.92	18.27	-3.35	16.44	18.39	-1.95
Hammersmith & Fulham	13.99	16.93	-2.94	14.01	17.60	-3.59	14.16	17.54	-3.38	14.53	17.27	-2.75	15.06	17.52	-2.46	16.38	17.76	-1.38	16.09	18.49	-2.40
Haringey	16.09	21.95	-5.86	16.15	22.55	-6.40	16.18	22.43	-6.25	16.34	21.92	-5.58	17.49	22.05	-4.56	17.85	23.13	-5.27	18.20	21.80	-3.60
Islington	16.15	17.97	-1.82	16.97	18.75	-1.78	16.27	19.01	-2.75	17.71	18.98	-1.27	18.21	20.10	-1.89	19.72	20.66	-0.95	19.63	20.43	-0.79
Kensington & Chelsea	10.11	12.97	-2.87	10.57	12.45	-1.88	10.15	12.22	-2.06	10.41	12.40	-1.99	10.37	12.16	-1.79	10.61	12.62	-2.01	10.14	12.18	-2.04
Lambeth	21.68	28.25	-6.57	22.90	29.44	-6.54	23.28	29.08	-5.81	24.40	29.82	-5.41	24.71	29.98	-5.27	25.39	30.39	-4.99	26.14	29.63	-3.49
Lewisham	15.61	20.44	-4.84	15.75	21.25	-5.50	16.91	21.19	-4.28	18.15	21.54	-3.39	18.48	21.36	-2.88	19.43	22.13	-2.70	19.60	21.04	-1.44
Newham	13.74	20.63	-6.90	13.81	22.99	-9.17	13.96	24.84	-10.88	14.23	24.31	-10.09	14.71	24.26	-9.55	15.35	24.13	-8.77	15.42	23.54	-8.12
Southwark	17.55	22.85	-5.30	18.21	23.95	-5.74	19.60	24.52	-4.92	21.09	25.66	-4.57	22.03	25.51	-3.49	22.25	26.00	-3.74	22.16	26.17	-4.01
Tower Hamlets	14.10	15.53	-1.44	14.06	16.95	-2.89	14.28	17.96	-3.68	15.01	18.49	-3.48	16.24	18.43	-2.19	16.83	19.55	-2.71	17.46	19.65	-2.18
Wandsworth	25.36	28.47	-3.11	26.22	29.71	-3.49	25.89	29.97	-4.08	26.85	29.20	-2.35	27.76	30.18	-2.42	28.54	31.35	-2.81	28.12	30.58	-2.46
Westminster	20.04	18.82	1.22	19.01	19.90	-0.89	16.74	20.14	-3.40	19.24	19.57	-0.33	18.52	20.36	-1.84	18.44	21.00	-2.56	18.22	21.10	-2.88
Outer London																					
Barking & Dagenham	8.39	9.61	-1.22	9.11	10.83	-1.72	9.11	12.21	-3.10	9.63	11.84	-2.21	10.06	12.15	-2.09	10.98	12.47	-1.49	11.04	11.99	-0.95
Barnet	18.57	22.30	-3.73	18.87	22.41	-3.54	18.92	21.90	-2.98	18.76	21.16	-2.40	20.08	21.61	-1.53	20.18	22.27	-2.10	19.84	22.37	-2.53
Bexley	10.28	11.00	-0.73	10.81	10.89	-0.08	10.98	11.33	-0.35	10.69	10.55	0.14	10.28	10.77	-0.48	11.32	11.52	-0.20	10.88	10.78	0.09
Brent	15.37	22.93	-7.55	14.55	22.87	-8.32	14.54	22.52	-7.98	15.31	23.02	-7.71	15.76	22.27	-6.51	15.68	23.21	-7.53	15.79	22.59	-6.80
Bromley	15.14	15.51	-0.37	15.52	15.80	-0.28	14.96	16.20	-1.24	16.02	15.12	0.90	15.97	15.49	0.48	17.27	16.34	0.93	15.73	14.68	1.05
Croydon	16.35	20.05	-3.69	17.48	21.04	-3.56	17.16	21.14	-3.99	17.40	21.39	-4.00	18.42	21.32	-2.89	19.65	21.91	-2.25	18.63	20.36	-1.72
Ealing	18.69	24.95	-6.26	18.14	26.00	-7.86	18.25	26.14	-7.89	18.15	25.33	-7.18	18.65	25.43	-6.79	20.29	26.50	-6.20	21.18	24.61	-3.43
Enfield	15.94	17.72	-1.78	15.34	18.19	-2.85	15.20	18.44	-3.25	15.48	17.95	-2.46	16.99	18.29	-1.30	16.89	18.28	-1.40	16.91	17.91	-1.01
Greenwich	14.71	15.19	-0.48	14.98	16.38	-1.41	14.85	16.97	-2.12	15.50	17.55	-2.06	15.33	17.75	-2.42	15.86	19.26	-3.40	14.84	18.82	-3.98
Harrow	13.13	14.40	-1.27	12.88	14.74	-1.86	13.56	15.10	-1.54	13.92	14.51	-0.58	13.64	15.50	-1.86	14.21	15.80	-1.59	13.68	14.96	-1.29
Havering	9.05	9.08	-0.03	9.23	9.14	0.10	9.61	9.63	-0.02	9.80	9.10	0.70	9.94	9.18	0.76	10.89	9.75	1.14	10.63	9.47	1.17
Hillingdon	14.35	15.61	-1.26	14.39	16.23	-1.85	14.44	16.76	-2.32	14.70	15.99	-1.29	15.13	16.15	-1.02	15.88	17.43	-1.54	16.06	16.68	-0.62
Hounslow	13.56	17.54	-3.98	13.25	18.20	-4.95	13.94	18.05	-4.12	14.19	17.82	-3.62	14.70	17.78	-3.08	16.01	18.25	-2.25	15.55	19.12	-3.57
Kingston upon Thames	11.19	11.73	-0.54	11.57	12.08	-0.52	11.76	11.66	0.10	11.77	11.93	-0.16	12.75	12.37	0.39	13.09	12.93	0.16	12.37	12.35	0.03
Merton	13.02	15.35	-2.33	13.14	15.60	-2.46	13.32	15.95	-2.63	13.83	15.46	-1.63	14.39	16.00	-1.61	14.75	16.89	-2.14	14.22	16.34	-2.12
Redbridge	13.92	15.52	-1.60	16.11	16.37	-0.26	15.63	17.41	-1.78	15.63	16.21	-0.58	16.34	16.49	-0.15	16.97	17.46	-0.49	17.19	16.97	0.22
Richmond upon Thames	12.41	13.68	-1.28	13.19	13.73	-0.54	13.13	13.37	-0.24	13.40	13.10	0.30	13.58	13.31	0.28	13.64	14.18	-0.54	13.05	13.71	-0.66
Sutton	9.80	10.20	-0.40	9.95	10.45	-0.50	9.75	10.36	-0.61	10.01	9.71	0.30	10.50	10.15	0.35	11.29	10.64	0.64	10.57	9.69	0.88
Waltham Forest	11.17	15.55	-4.38	12.15	16.95	-4.79	11.76	17.01	-5.24	12.04	16.37	-4.33	12.72	16.11	-3.39	13.17	16.96	-3.79	13.52	16.88	-3.36

Annex Table 4: International migration flows, London boroughs, mid 2001-mid 2002 to mid 2007-mid2008 (thousands)

	2001-02			2002-03			2003-04			2004-05			2005-06			2006-07			2007-08		
	In	Out	Net	In	Out	Net	In	Out	Net	In	Out	Net	In	Out	Net	In	Out	Net	In	Out	Net
Inner London																					
Camden	9.32	5.83	3.49	9.77	7.11	2.66	10.83	6.32	4.52	12.03	7.23	4.80	10.51	7.80	2.72	10.47	7.84	2.63	10.22	5.89	4.33
City of London	0.29	0.06	0.23	0.34	0.13	0.20	0.31	0.05	0.25	0.35	0.08	0.27	0.71	0.08	0.63	1.06	0.18	0.89	1.13	0.27	0.86
Hackney	4.91	1.92	3.00	5.11	2.64	2.47	4.91	2.12	2.79	4.86	2.33	2.54	4.03	2.35	1.68	3.50	2.48	1.02	3.09	2.14	0.95
Hammersmith & Fulham	7.23	4.30	2.93	7.04	6.54	0.50	6.57	5.04	1.53	6.53	5.28	1.25	5.29	5.12	0.17	5.90	5.96	-0.07	5.61	5.46	0.15
Haringey	9.01	3.27	5.74	7.56	4.08	3.48	6.94	2.80	4.14	6.60	2.76	3.84	5.41	2.64	2.76	4.32	2.84	1.49	3.59	2.54	1.04
Islington	6.16	4.57	1.59	6.34	4.87	1.48	6.08	4.39	1.69	6.72	4.23	2.49	5.69	4.76	0.93	5.74	5.07	0.68	5.00	4.39	0.62
Kensington & Chelsea	10.04	6.40	3.64	10.20	7.91	2.29	9.47	7.90	1.57	11.11	7.53	3.58	8.13	7.75	0.38	8.78	6.93	1.85	6.26	5.48	0.78
Lambeth	6.64	3.67	2.96	6.50	4.38	2.11	7.69	3.53	4.16	7.93	3.33	4.60	7.44	2.85	4.59	7.47	3.65	3.82	6.46	4.32	2.14
Lewisham	4.13	1.81	2.32	4.05	2.24	1.81	4.34	1.72	2.62	5.20	1.87	3.32	4.34	1.86	2.48	4.35	2.32	2.03	3.43	2.04	1.39
Newham	9.48	2.21	7.27	7.45	3.21	4.24	5.83	2.69	3.15	5.29	2.85	2.44	6.90	3.31	3.59	7.89	3.39	4.50	6.82	2.39	4.43
Southwark	6.12	2.43	3.69	6.63	3.30	3.33	7.73	2.35	5.39	9.24	2.34	6.90	9.73	2.33	7.41	9.39	3.02	6.37	7.40	2.98	4.42
Tower Hamlets	8.07	2.81	5.27	7.14	4.97	2.17	7.46	3.76	3.70	6.43	3.72	2.71	6.29	3.92	2.37	7.77	3.45	4.32	7.57	3.53	4.04
Wandsworth	7.95	5.04	2.91	8.16	6.35	1.80	7.98	5.77	2.21	8.08	5.14	2.94	7.59	5.22	2.37	7.49	6.45	1.04	7.36	7.48	-0.12
Westminster	11.87	6.81	5.06	12.85	7.67	5.18	14.28	5.51	8.77	16.20	6.21	9.99	13.13	7.18	5.95	13.27	9.19	4.07	11.98	7.87	4.11
Outer London																					
Barking & Dagenham	2.22	0.81	1.41	2.12	1.11	1.01	2.30	0.56	1.74	2.14	0.58	1.57	2.11	0.75	1.36	1.93	1.20	0.74	2.11	0.89	1.22
Barnet	6.96	3.05	3.92	7.23	3.63	3.60	6.95	3.22	3.73	7.67	3.48	4.19	7.00	3.86	3.13	6.57	4.46	2.11	5.77	3.56	2.21
Bexley	0.93	0.45	0.48	0.94	0.53	0.42	0.84	0.30	0.54	0.79	0.42	0.37	0.90	0.51	0.39	0.85	0.88	-0.03	0.93	0.62	0.31
Brent	7.99	5.49	2.51	7.65	6.63	1.02	7.82	5.66	2.16	8.58	4.98	3.61	7.22	4.27	2.95	6.33	4.08	2.25	6.39	3.67	2.72
Bromley	1.94	1.04	0.90	2.18	1.28	0.91	2.02	0.77	1.25	2.01	1.07	0.94	1.49	1.25	0.24	1.35	1.74	-0.38	1.20	1.21	-0.01
Croydon	4.40	2.89	1.51	4.03	2.64	1.39	4.56	2.27	2.29	5.04	2.57	2.47	5.04	2.94	2.10	4.70	3.59	1.11	4.20	2.81	1.39
Ealing	10.50	5.60	4.90	9.39	6.25	3.14	10.69	4.58	6.11	10.14	4.78	5.36	9.71	5.01	4.70	9.06	5.40	3.66	8.42	5.70	2.73
Enfield	5.63	1.98	3.65	4.52	2.40	2.12	3.61	1.93	1.68	3.98	1.84	2.14	3.19	2.12	1.07	2.73	2.56	0.17	2.02	1.95	0.07
Greenwich	3.42	2.11	1.31	3.43	2.38	1.04	3.66	1.96	1.70	3.63	2.30	1.33	3.30	2.85	0.45	3.77	3.16	0.61	4.19	2.56	1.63
Harrow	3.68	1.69	1.99	3.44	1.75	1.69	3.96	1.47	2.49	4.92	1.42	3.50	4.73	1.71	3.02	4.23	2.11	2.11	3.63	2.01	1.62
Havering	0.94	0.52	0.42	0.90	0.61	0.29	0.81	0.32	0.50	0.75	0.40	0.36	1.15	0.46	0.68	1.07	0.90	0.18	0.97	0.66	0.32
Hillingdon	2.78	1.14	1.64	3.07	1.34	1.73	3.60	1.35	2.26	4.13	1.54	2.59	3.28	1.84	1.43	2.92	2.03	0.89	2.83	1.49	1.34
Hounslow	5.60	2.66	2.94	5.27	2.90	2.36	6.92	2.17	4.76	7.37	2.51	4.85	7.05	2.98	4.07	6.87	3.71	3.16	6.57	3.70	2.87
Kingston upon Thames	3.73	1.82	1.90	3.64	2.32	1.32	3.42	1.47	1.96	3.49	1.60	1.90	3.28	1.92	1.36	3.36	2.59	0.78	3.07	1.93	1.15
Merton	4.90	3.16	1.74	4.44	3.31	1.13	4.70	2.58	2.12	4.88	2.31	2.58	5.02	2.52	2.50	5.25	2.85	2.40	5.64	2.71	2.93
Redbridge	4.18	1.14	3.04	3.59	1.55	2.04	3.23	1.46	1.77	3.20	1.58	1.62	3.98	1.87	2.11	4.77	2.17	2.59	4.03	2.04	1.99
Richmond upon Thames	4.53	2.51	2.02	4.44	2.80	1.65	3.58	1.81	1.77	3.25	2.08	1.17	2.65	2.47	0.18	3.03	3.38	-0.35	2.69	2.77	-0.08
Sutton	1.52	0.97	0.55	1.62	1.06	0.57	1.42	0.79	0.63	1.41	0.91	0.51	1.11	1.02	0.09	1.19	1.39	-0.20	1.08	1.01	0.07
Waltham Forest	5.34	2.63	2.72	4.74	3.23	1.51	4.95	2.78	2.17	4.51	3.12	1.39	4.68	3.23	1.44	4.89	3.40	1.49	4.65	2.68	1.97

Annex Table 5: Births, Deaths and Natural Change (NC), London boroughs, mid 2001-mid 2002 to mid-2007-mid 2008

	2001-02			2002-03			2003-04			2004-05			2005-06			2006-07			2007-08		
	Births	Deaths	Natural Change	Births	Deaths	Natural Change	Births	Deaths	Natural Change	Births	Deaths	Natural Change	Births	Deaths	Natural Change	Births	Deaths	Natural Change	Births	Deaths	Natural Change
Inner London																					
Camden	2,875	1,449	1,426	2,889	1,391	1,498	2,983	1,416	1,567	3,031	1,383	1,648	2,949	1,285	1,664	3,109	1,237	1,872	3,073	1,238	1,835
City of London	54	41	13	61	50	11	63	48	15	63	46	17	65	30	35	60	46	14	54	41	13
Hackney	4,130	1,214	2,916	4,220	1,295	2,925	4,256	1,255	3,001	4,378	1,183	3,195	4,473	1,241	3,232	4,516	1,156	3,360	4,427	1,090	3,337
Hammersmith & Fulham	2,452	1,026	1,426	2,592	1,107	1,485	2,603	1,050	1,553	2,654	995	1,659	2,698	886	1,812	2,759	954	1,805	2,730	979	1,751
Haringey	3,780	1,422	2,358	3,847	1,464	2,383	3,966	1,434	2,532	3,964	1,264	2,700	3,980	1,234	2,746	4,275	1,253	3,022	4,325	1,228	3,097
Islington	2,521	1,238	1,283	2,609	1,273	1,336	2,646	1,256	1,390	2,718	1,210	1,508	2,702	1,132	1,570	2,831	1,121	1,710	2,859	1,160	1,699
Kensington & Chelsea	2,116	995	1,121	2,222	963	1,259	2,242	900	1,342	2,177	931	1,246	2,237	879	1,358	2,267	824	1,443	2,213	863	1,350
Lambeth	4,341	1,731	2,610	4,565	1,770	2,795	4,814	1,704	3,110	4,646	1,689	2,957	4,849	1,589	3,260	4,836	1,558	3,278	4,918	1,512	3,406
Lewisham	3,773	2,036	1,737	3,836	2,009	1,827	4,004	1,950	2,054	4,131	1,923	2,208	4,528	1,790	2,738	4,557	1,642	2,915	4,872	1,775	3,097
Newham	4,851	1,635	3,216	5,018	1,581	3,437	5,095	1,587	3,508	5,239	1,567	3,672	5,487	1,525	3,962	5,711	1,410	4,301	6,112	1,437	4,675
Southwark	4,091	1,792	2,299	4,174	1,746	2,428	4,397	1,754	2,643	4,600	1,641	2,959	4,606	1,503	3,103	4,889	1,503	3,386	4,992	1,489	3,503
Tower Hamlets	3,823	1,355	2,468	3,922	1,353	2,569	4,031	1,253	2,778	3,933	1,156	2,777	4,068	1,199	2,869	4,152	1,164	2,988	4,227	1,112	3,115
Wandsworth	3,976	2,004	1,972	4,267	1,930	2,337	4,447	1,908	2,539	4,370	1,851	2,519	4,751	1,769	2,982	5,044	1,738	3,306	5,014	1,667	3,347
Westminster	2,531	1,372	1,159	2,677	1,336	1,341	2,776	1,386	1,390	2,765	1,298	1,467	2,948	1,140	1,808	2,953	1,142	1,811	2,895	1,076	1,819
Outer London																					
Barking & Dagenham	2,416	1,655	761	2,505	1,674	831	2,639	1,642	997	2,909	1,580	1,329	3,072	1,475	1,597	3,324	1,374	1,950	3,489	1,370	2,119
Barnet	4,151	2,769	1,382	4,363	2,675	1,688	4,328	2,658	1,670	4,607	2,620	1,987	4,766	2,470	2,296	4,977	2,443	2,534	5,232	2,395	2,837
Bexley	2,556	2,068	488	2,571	2,112	459	2,632	2,036	596	2,757	1,937	820	2,683	1,911	772	2,843	1,845	998	3,046	1,886	1,160
Brent	3,967	1,780	2,187	4,326	1,777	2,549	4,355	1,693	2,662	4,417	1,617	2,800	4,589	1,596	2,993	4,803	1,540	3,263	4,892	1,547	3,345
Bromley	3,372	2,814	558	3,529	2,924	605	3,611	2,894	717	3,599	2,713	886	3,710	2,619	1,091	3,831	2,686	1,145	4,045	2,711	1,334
Croydon	4,365	2,755	1,610	4,504	2,745	1,759	4,708	2,718	1,990	4,849	2,597	2,252	4,684	2,590	2,094	5,141	2,427	2,714	5,457	2,410	3,047
Ealing	4,321	2,219	2,102	4,491	2,200	2,291	4,592	2,090	2,502	4,810	2,090	2,720	4,953	1,953	3,000	5,162	1,904	3,258	5,563	1,852	3,711
Enfield	3,825	2,439	1,386	4,024	2,434	1,590	4,107	2,385	1,722	4,380	2,241	2,139	4,513	2,235	2,278	4,712	2,067	2,645	4,951	2,025	2,926
Greenwich	3,282	1,909	1,373	3,389	1,983	1,406	3,516	1,983	1,533	3,937	1,982	1,955	4,079	1,801	2,278	4,361	1,776	2,585	4,438	1,777	2,661
Harrow	2,602	1,622	980	2,714	1,667	1,047	2,814	1,631	1,183	2,872	1,694	1,178	2,922	1,532	1,390	2,962	1,503	1,459	3,193	1,461	1,732
Havering	2,345	2,403	-58	2,345	2,523	-178	2,396	2,354	42	2,484	2,353	131	2,462	2,277	185	2,529	2,162	367	2,698	2,196	502
Hillingdon	3,252	2,055	1,197	3,307	2,069	1,238	3,437	2,132	1,305	3,408	2,025	1,383	3,627	1,869	1,758	3,724	1,863	1,861	4,067	1,873	2,194
Hounslow	3,172	1,705	1,467	3,271	1,702	1,569	3,481	1,664	1,817	3,668	1,574	2,094	3,762	1,562	2,200	3,881	1,409	2,472	4,258	1,424	2,834
Kingston upon Thames	1,836	1,306	530	1,794	1,252	542	1,945	1,263	682	2,036	1,132	904	2,024	1,152	872	2,142	1,117	1,025	2,202	1,099	1,103
Merton	2,576	1,399	1,177	2,612	1,420	1,192	2,785	1,455	1,330	2,893	1,316	1,577	2,972	1,309	1,663	3,246	1,296	1,950	3,331	1,259	2,072
Redbridge	3,095	2,149	946	3,352	2,041	1,311	3,380	2,078	1,302	3,494	2,048	1,446	3,792	1,911	1,881	3,993	1,885	2,108	4,061	1,773	2,288
Richmond upon Thames	2,311	1,420	891	2,568	1,431	1,137	2,565	1,425	1,140	2,565	1,293	1,272	2,626	1,282	1,344	2,822	1,253	1,569	2,939	1,196	1,743
Sutton	2,009	1,693	316	2,243	1,667	576	2,172	1,710	462	2,345	1,499	846	2,320	1,520	800	2,516	1,430	1,086	2,576	1,532	1,044
Waltham Forest	3,545	1,889	1,656	3,663	1,909	1,754	3,873	1,782	2,091	3,948	1,776	2,172	4,030	1,612	2,418	4,413	1,611	2,802	4,491	1,491	3,000

For more information please contact *Jessica Chamberlain*, Research & Statistical Analyst, Intelligence Unit, Greater London Authority, City Hall, The Queen's Walk, London SE1 2AA
Tel: 020 7983 4347 e-mail: jessica.chamberlain@london.gov.uk

Copyright © Greater London Authority, 2010

ONS statistics presented in this Update have been reproduced with the permission of the Controller of Her Majesty's Stationery Office and are © Crown Copyright.