

Unemployment in London: July 2010

Summary of Latest Measures

This *Update* presents some of the indicators which measure labour market recovery from the six quarter recession that finished in the final quarter of 2009. It presents the latest National and London figures for those claiming Jobseekers Allowance (JSA) and also shows the official unemployment measure: the International Labour Organisation (ILO) definition, which is derived from the Labour Force Survey. In addition, it shows estimates of employment levels.

The claimant count was just under 1.4 million people in Great Britain in July 2010, a decrease of 13 per cent on the level six months previously, while in London the decrease over the same period was slightly less from 225,000 in January 2010 to 212,000 in July. The claimant count figures for July 2010 are, in both cases, in the region of 60 per cent of the ILO unemployed¹ estimate (2.46 million for Great Britain and 383,000 for London) for the April – June quarter. (See the Background section of this *Update* for an explanation of the differences.) The latest figures for July 2010 show a steady decline in the claimant count for Great Britain from 5.8 per cent in January 2010 to 5.0 per cent in July. London's claimant count rate has fallen at a slightly lower rate of half a percentage point since January to 5.7 per cent.

ILO Unemployment

Table 1 ILO unemployed for the regions and the UK, April-June 2010

(seasonally adjusted)	Unemployment		Change on year ago	
	No (000s)	Rate (%)	No (000s)	Rate (%)
North East	120	9.4		-0.4
North West	276	8.1	-14	-0.4
Yorkshire & the Humber	244	9.1	11	0.3
East Midlands	170	7.4	0	0.1
West Midlands	221	8.3	-64	-2.3
East	203	6.8	9	0.3
London	383	9.3	24	0.4
South East	268	6.1	5	0.2
South West	165	6.1	-7	-0.3
England	2049	7.7	-37	-0.2
Wales	130	9.0	22	1.4
Scotland	223	8.4	35	1.4
Great Britain	2401	7.8	19	0.0
Northern Ireland	55	6.6	1	-0.1
United Kingdom	2457	7.8	22	0.0

Source: Labour Force Survey

Notes:

Unemployment rates are calculated as a percentage of the total economically active aged 16+.

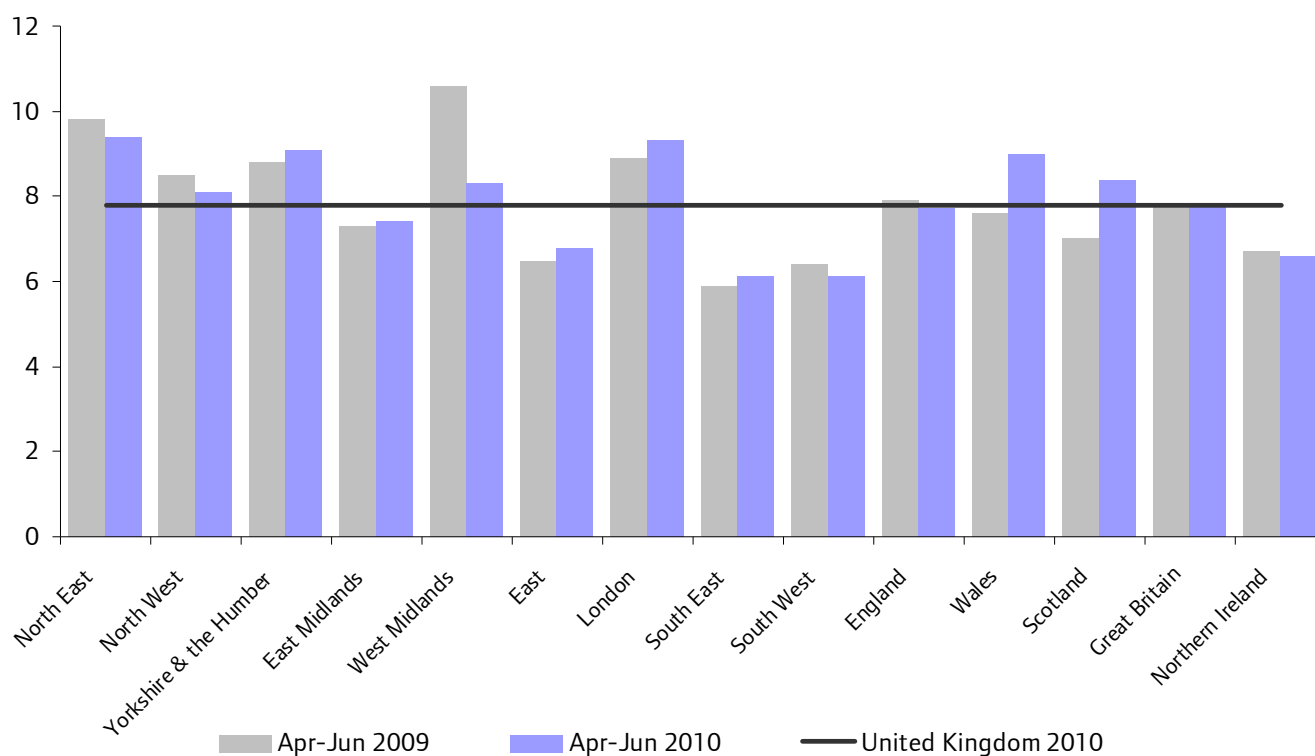
Overall, as Table 1 shows, London had an unemployment rate for the April - June quarter of 9.3 per cent, well above the national rate, only the North East region had a higher rate. The lowest rates were in the South East (6.1 per cent), South West (6.1 per cent) and Northern Ireland (6.6 per cent). Nationally, unemployment levels rose by 22,000 on the previous year. London saw an increase of 24,000, equivalent to 0.4 percentage points, the third highest increase behind Wales and Scotland. Five regions saw a decrease in unemployment levels on the previous year. Unemployment in the West Midlands fell by 64,000, a decrease of 2.3 percentage points on the previous year. Chart 1 shows the differences by region over the last year and compares the latest figures for each region, with the UK average

for April-June 2010. The dramatic decline in the West Midlands unemployment rate now sees it ranked sixth highest of all regions compared with first in 2009. London is now the second highest ranked region, 1.5 percentage points above the UK average.

¹ Seasonally adjusted.

Chart 1 ILO Unemployment rates for regions, April - June 2009 and 2010

(seasonally adjusted)



Source: Labour Force Survey

While London ranked second in terms of overall unemployment levels, there were clear differences to the other regions in terms of the characteristics of the unemployed. London has the highest proportion of women among the unemployed (46 per cent of London's unemployed are women, compared with a national figure of 40 per cent). The latest figures for London, as given in Table 2, show very similar proportions of the economically active population being unemployed among women and men. In all other regions, the female rate is clearly lower than the male unemployment rate. The number of unemployed women in London has grown at a faster rate over the last year than the number of unemployed men

Table 2 Change in ILO unemployed in London (seasonally adjusted)

	Apr-Jun 2010		Change on previous quarter		Change on previous year	
	Number (000s)	Rate (%)	Number (000s)	Change %	Number (000s)	Change %
People	383	9.3	12	3.2	24	6.7
Men	208	9.2	-5	-2.3	10	5.1
Women	175	9.4	18	11.5	14	8.7

Source: Labour Force Survey

Notes: All figures are for population aged 16 and over. Unemployment rates are calculated as a percentage of the total economically active aged 16+.

Although the Labour Force Survey, source of the regional unemployment figures, is not large enough to give sufficiently robust borough level unemployment figures directly, modelled estimates linking this with other data, including the claimant count, are produced annually and are now available for Oct 2008 to Sept 2009. Since these are modelled, rather than direct estimates, there is a degree of judgement used in their production, and potential error arising from the small sample size. These estimates are shown in Table 3 together with a confidence interval indicating the level of reliability of the estimates for individual boroughs.

No change figures are published, and it is only possible to do approximate comparisons with the previous year's estimates. Newham and Tower Hamlets had the highest unemployment rates at 13 per cent. A further seven boroughs had rates equal to or above ten per cent – more than two percentage points higher than the UK rate.

Table 3 Modelled estimates of unemployment for London boroughs, Oct 2008 – Sept 2009

	Level	CI (+/-)	Rate	CI (+/-)
Barking and Dagenham	8,100	1,500	10.5	2.0
Barnet	12,400	2,200	7.7	1.4
Bexley	8,400	1,600	7.6	1.6
Brent	12,500	2,300	8.6	1.7
Bromley	9,400	1,900	6.0	1.3
Camden	9,600	1,800	7.2	1.4
Croydon	15,300	2,600	8.1	1.5
Ealing	15,100	2,500	9.3	1.6
Enfield	13,500	2,100	10.0	1.7
Greenwich	11,300	1,900	10.2	1.8
Hackney	12,000	1,900	10.5	1.7
Hammersmith and Fulham	8,400	1,500	8.8	1.7
Haringey	12,300	2,100	10.7	1.9
Harrow	8,000	1,400	7.2	1.4
Havering	8,500	1,600	7.1	1.4
Hillingdon	9,000	1,800	6.8	1.4
Hounslow	9,000	1,600	7.4	1.4
Islington	10,700	1,900	10.0	1.8
Kensington and Chelsea	6,200	1,200	6.8	1.4
Kingston upon Thames	4,700	900	5.3	1.1
Lambeth	15,800	2,600	9.7	1.7
Lewisham	12,700	2,200	8.7	1.6
Merton	7,200	1,300	6.2	1.2
Newham	14,300	2,300	13.1	2.2
Redbridge	11,000	1,800	8.6	1.5
Richmond upon Thames	4,500	900	4.7	1.0
Southwark	14,000	2,400	9.0	1.6
Sutton	5,700	1,100	5.5	1.2
Tower Hamlets	14,900	2,500	13.0	2.2
Waltham Forest	11,700	1,900	10.3	1.8
Wandsworth	10,700	2,100	6.0	1.2
Westminster	9,400	1,800	7.2	1.4

Source: ONS Model based unemployment data for local areas, derived using Annual Population Survey and Claimant count data. Figures are for people aged 16 and over. Rates are expressed as a percentage of the economically active population aged 16 and over.

The Confidence Interval (CI figure) gives the range that it is believed encompasses the true figure for 95 per cent of estimates.

Figures for Government Office Regions are not made available as part of this dataset.

Data for the City of London is omitted on the basis of the extremely small sample size.

While unemployment is a key labour market indicator, a fuller picture can be gained by looking at other indicators. Table 4 shows employment figures for the April – June quarter and shows that there are still more than 3.7 million London residents in employment, of which around 55 per cent are men, a higher proportion than in other regions. The overall employment rate in London, that is the percentage of the working-age population in paid employment² is 68 per cent, compared with over 70 per cent for the UK. This is mainly due to the relatively low rate among women, as the employment rate for London's men is close to the national average.

The 3.7 million Londoners in employment represents an increase of two per cent on the number a year previously.

² As of the April–June 2010 figures, the working-age denominator used to calculate the employment rates now refers to all those aged 16–64 rather than the previous measure which used females aged 16–59 and males aged 16–64.

Table 4 Employment for the regions and the UK, April to June 2010**(seasonally adjusted)**

	Employment					
	Total		Men		Women	
	No (000s)	Rate (%)	No (000s)	Rate (%)	No (000s)	Rate (%)
North East	1,159	67.8	604	71.1	556	64.6
North West	3,146	69.1	1,678	73.8	1,468	64.4
Yorkshire & the Humber	2,427	69.7	1,273	72.9	1,154	66.5
East Midlands	2,113	71.0	1,135	75.8	978	66.2
West Midlands	2,449	69.3	1,327	74.9	1,122	63.7
East	2,780	73.4	1,511	79.4	1,268	67.4
London	3,742	68.0	2,060	74.7	1,681	61.1
South East	4,149	74.6	2,216	80.3	1,933	69.0
South West	2,525	73.8	1,339	78.4	1,186	69.2
England	24,489	70.9	13,143	76.1	11,346	65.7
Wales	1,312	66.7	692	70.8	620	62.6
Scotland	2,444	70.2	1,262	73.7	1,182	66.8
Great Britain	28,245	70.6	15,097	75.6	13,148	65.7
Northern Ireland	777	66.4	416	71.2	361	61.7
United Kingdom	29,023	70.5	15,514	75.5	13,509	65.6

Source: Labour Force Survey, Regional Monthly Labour Market Statistics

Notes: Employment levels are quoted for all people aged 16 and over.

Employment rates are calculated as a percentage of the working age population (16-64).

Change rates are calculated as a percentage of the working age population.

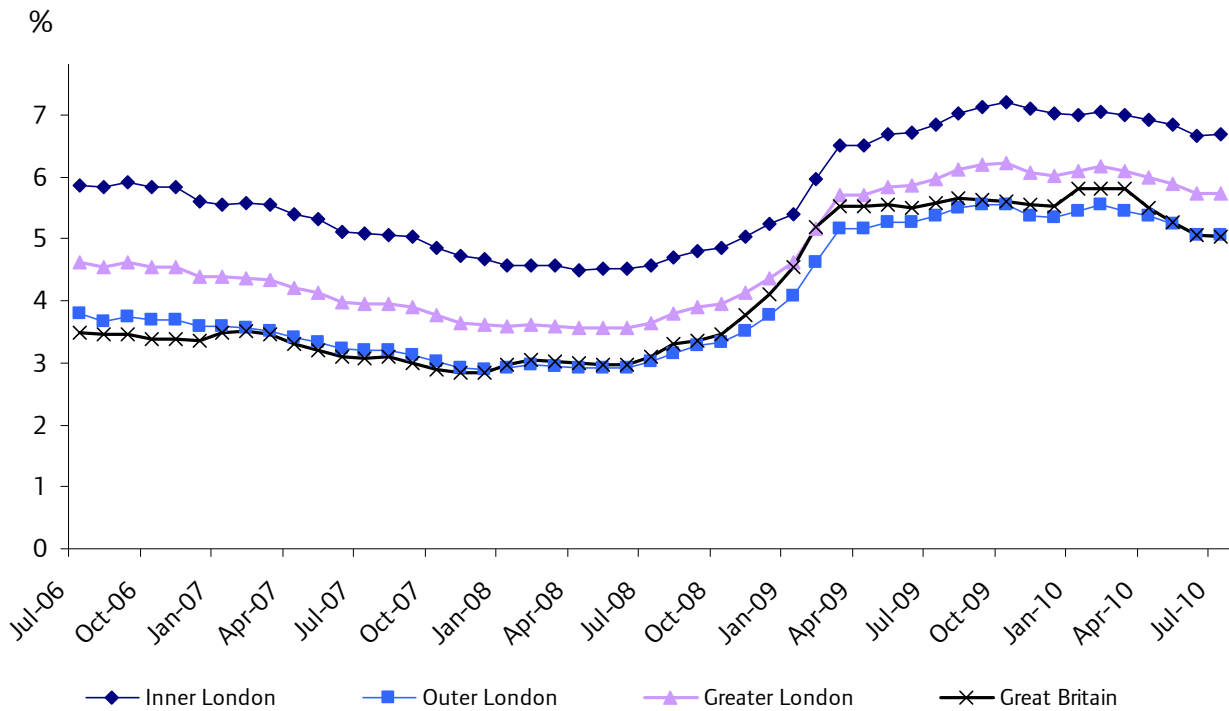
Claimant Count

While the ILO unemployment measure is seen as a better indicator of overall levels of unemployment in the population, this *Update* has shown some of the volatility in the figures based on sample survey data. The JSA Claimant Count is a useful indicator of trends, as it is more timely and, as it is a full count from administrative systems, is also able to give more detail for smaller areas, but clearly does not give as full a picture of unemployment as the eligibility criteria mean that not all unemployed people can claim this benefit. Particularly noteworthy in the context of recession and using the claimant count, as an indicator is the criterion that some people are not able to claim for more than six months. Therefore after this time will cease to be included in the claimant count. (See the Background section of this report for more detail.)

The JSA claimant count stood at 212,000 for London in July 2010, of which 48 per cent were in Inner London, compared with around 41 per cent of the economically active population. The GLA claimant rates (the claimant count as a percentage of the resident economically active population using GLA population estimates) show a rate of 5.7 per cent for London, compared with a national figure of 5.0 per cent. Inner London claimant count rate is higher at 6.7 per cent, while the Outer London rate is close to the national average at 5.1 per cent.

The claimant count trends for London over four years are presented in Charts 2 and 3. Detailed figures are given in Table 5. The annual figures from 2004 show a steady decline in London, followed by an increase, starting in 2008 and a further plateau from February 2009. Chart 2 shows very clearly that the London rates for all people generally follow the same trends as the national figures and the gap between London and the national rate is now close to that in July 2008. However, recent months have seen more volatility in the national rate than for London with a short-lived increase between January and April 2010. Between July 2008 and March 2010 the outer London rate remained consistently below the national rate. The relatively sharp decline in the national rate since April has since seen the two come closer together at around five percent.

Chart 2 Claimant count rates for all people, July 2006 to July 2010



Source: Office for National Statistics (Jobcentre Plus administrative system) & GLA estimates

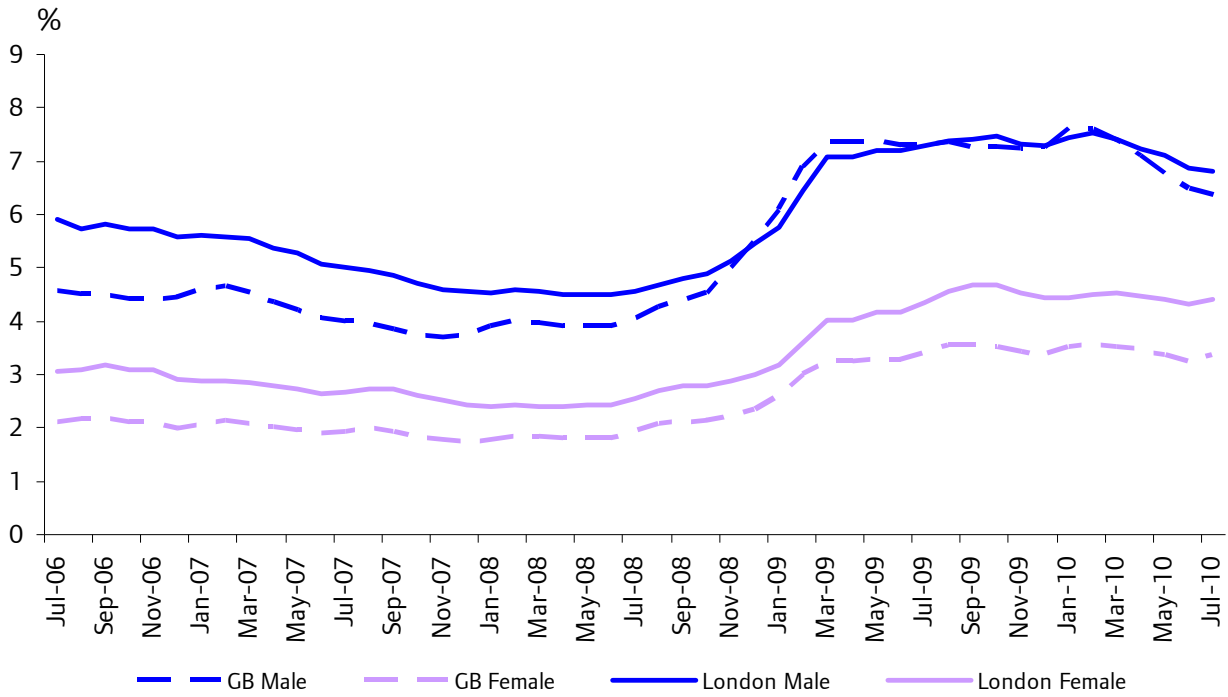
Chart 3 illustrates rates for men and women over the same period, showing the much higher claimant count rates and the sharper rise seen particularly between November 2008 and March 2009 among men, and the relative stability of rates for women. The national rate for men climbed more steeply to rise above that for men in London for the period February to July 2009. Since July 2009 the rate for males in Great Britain fell below that for London before climbing above again in Jan 2010 and then falling again to a current rate of 6.4 per cent, 0.4 percentage points lower than the London rate. In contrast, the difference between claimant count rates among women in Great Britain and London has remained relatively stable, with women in London consistently having a rate one percentage point higher than those in Great Britain. Women in both areas saw a significant increase in claimant rates between November 2008 and March 2009.

Chart 4 illustrates the trends since the middle of 2008 in both the ILO measure and GLA claimant count rates. The ILO measure is on a rolling three-month basis and as it is a survey-based estimate shows a degree of volatility, whereas the claimant count rate is taken at a single date in each month. It clearly shows that they follow similar trends, although the claimant count rose to a greater proportion of the ILO measure between Nov 2008 and Mar 2009.

Table 5 shows the claimant count levels and rates for Inner, Outer and Greater London as illustrated in Chart 5 and for Great Britain using the same method of calculation. Table 6 gives the claimant count rates by age and shows the decreasing gap between the rates for young adults and older age groups across all areas, largely due to falling rates for young adults.

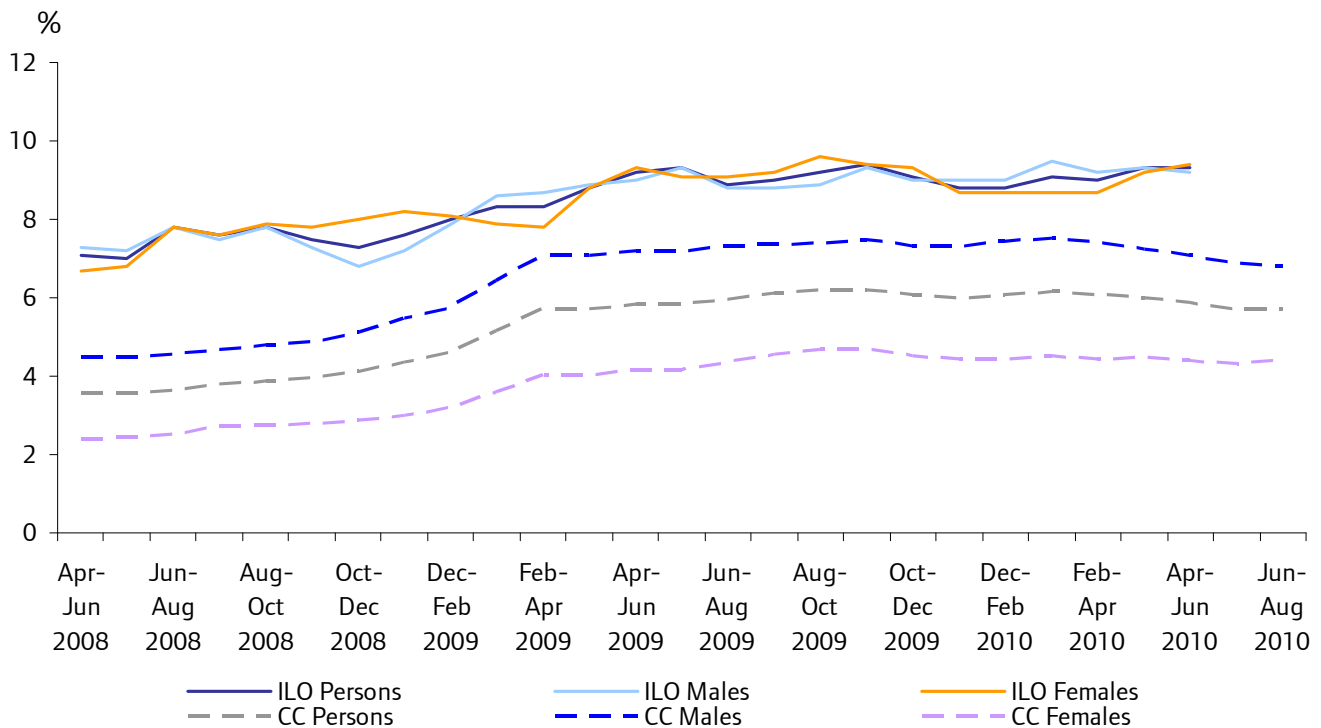
Table 7 gives the comparable figures for each London Borough showing the overall rates for each month in the last year. Tower Hamlets, Newham and Hackney remain the boroughs with the highest rates. Almost three quarters of London boroughs saw a percentage point decline in the claimant count rate on the previous year, with those that increased limited to growth of 0.2 percentage points. Despite retaining one of the highest overall rates in London, Tower Hamlets saw the second largest decline in rate at 0.7 percentage points, behind Kingston at 0.8.

Chart 3 Claimant count rates for men and women in London and Great Britain, July 2006 to July 2010



Source: Office for National Statistics (Jobcentre Plus administrative system) & GLA estimates

Chart 4 Unemployment trends in London, May 2008 to July 2010



Source: Office for National Statistics (Jobcentre Plus administrative system) & GLA estimates

Table 5: Claimant count rates by gender, annually September 2004-2009, monthly October 2009 to July 2010

	Sep-04	Sep-05	Sep-06	Sep-07	Sep-08	Sep-09					
Persons											
Inner London	6.1	6.0	5.9	5.0	4.8	7.1					
Outer London	3.5	3.7	3.8	3.1	3.3	5.5					
Greater London	4.5	4.6	4.6	3.9	3.9	6.2					
Great Britain	3.0	3.2	3.4	3.0	3.4	5.6					
Males											
Inner London	7.9	7.6	7.5	6.4	6.0	8.6					
Outer London	4.4	4.6	4.7	3.8	4.0	6.6					
Greater London	5.8	5.8	5.8	4.8	4.8	7.4					
Great Britain	4.0	4.2	4.5	3.8	4.4	7.3					
Females											
Inner London	3.9	4.0	3.9	3.4	3.3	5.3					
Outer London	2.4	2.6	2.6	2.3	2.4	4.3					
Greater London	3.0	3.1	3.2	2.7	2.8	4.7					
Great Britain	1.8	2.0	2.1	1.9	2.1	3.5					
	Oct-09	Nov-09	Dec-09	Jan-10	Feb-10	Mar-10	Apr-10	May-10	Jun-10	Jul-10	
Persons											
Inner London	7.2	7.1	7.0	7.0	7.1	7.0	6.9	6.8	6.7	6.7	
Outer London	5.5	5.4	5.3	5.4	5.6	5.4	5.4	5.2	5.1	5.1	
Greater London	6.2	6.1	6.0	6.1	6.2	6.1	6.0	5.9	5.7	5.7	
Great Britain	5.6	5.5	5.5	5.8	5.8	5.8	5.5	5.3	5.0	5.0	
Males											
Inner London	8.7	8.6	8.6	8.6	8.7	8.6	8.4	8.3	8.1	8.0	
Outer London	6.6	6.4	6.4	6.6	6.7	6.6	6.4	6.3	6.0	5.9	
Greater London	7.5	7.3	7.3	7.4	7.5	7.4	7.2	7.1	6.9	6.8	
Great Britain	7.2	7.2	7.3	7.6	7.6	7.6	7.1	6.8	6.5	6.4	
Females											
Inner London	5.3	5.2	5.1	5.0	5.1	5.1	5.1	5.0	4.9	5.0	
Outer London	4.3	4.1	4.0	4.0	4.1	4.1	4.1	4.0	3.9	4.0	
Greater London	4.7	4.5	4.4	4.4	4.5	4.4	4.5	4.4	4.3	4.4	
Great Britain	3.5	3.4	3.4	3.5	3.6	3.5	3.5	3.3	3.3	3.3	

Source: Claimant count – Office for National Statistics (Jobcentre Plus administrative system) & GLA estimates

Background

As the claimant count is a by-product of the benefits administration system, it only counts those unemployed people who are claiming JSA. GLA analysis has highlighted that some unemployed people are more likely to be missed by the claimant count than others; these include women, young people and those living in higher income households. This largely reflects the eligibility criteria for JSA. For this reason, the claimant count is best viewed as an unemployment indicator not a comprehensive unemployment measure.

The Government's official and preferred measure of unemployment is currently ILO unemployment. ILO unemployment measures those people out of work, who are actively looking for work and are available to start work. At a regional level, ILO unemployment is measured by the Labour Force Survey. The ILO measure is more comprehensive than the claimant count as it includes the many unemployed people who are not eligible for, or not claiming, JSA. It is the ILO measure that is generally quoted in the media.

Despite its limitations, the claimant count is widely used because it is timely (data are available monthly around 4/5 weeks after the date of the count) and importantly, because it is available for small areas. ILO unemployment estimates are not available for wards and even the borough level ILO estimates (modelled and survey based) have wide confidence intervals and cannot be generated by age or gender with any degree of reliability. Even at regional level, there is a degree of uncertainty in the figures, so small changes may reflect variations in the sample rather than in the underlying population.

The modelled unemployment estimates produced by the Office for National Statistics for local authorities (and now also available on a consistent basis for Parliamentary Constituencies) are based on determining a strong relationship between ILO unemployment (as measured by the Labour Force Survey) and auxiliary information (mainly the Claimant Count). This relationship is then used to provide more reliable estimates of ILO unemployment for local authorities. These model-based estimates are always more precise than any direct estimates produced at this level of geography from the Labour Force Survey.

Further information about the claimant count measure and how it compares to the official ILO measure can be found in: *DMAG Briefing 2010-01 Claimant Count Model 2010*:

Table 6: Claimant count and rates by age and gender, July 2009 to July 2010

	Claimant count numbers			Claimant count rate (%)											
				by sex			by age (all)			by age (males)			by age (females)		
	Persons	Males	Females	Persons	Males	Females	16-24	25-44	45-59/64	16-24	25-44	45-59/64	16-24	25-44	45-59/64
Inner London															
Jul-09	101,740	68,865	32,885	6.8	8.4	4.9	18.4	5.2	7.0	23.2	6.7	8.2	13.6	3.4	5.4
Aug-09	104,425	69,915	34,520	7.0	8.6	5.1	19.6	5.3	7.1	24.3	6.8	8.3	15.0	3.5	5.6
Sep-09	105,840	70,405	35,420	7.1	8.6	5.3	20.1	5.3	7.3	24.9	6.7	8.4	15.4	3.6	5.8
Oct-09	107,100	71,300	35,820	7.2	8.7	5.3	19.9	5.4	7.4	24.9	6.8	8.6	15.0	3.7	6.0
Nov-09	105,545	70,410	35,110	7.1	8.6	5.2	19.2	5.3	7.5	24.2	6.8	8.6	14.2	3.6	6.0
Dec-09	104,245	69,990	34,235	7.0	8.6	5.1	18.6	5.3	7.5	23.7	6.7	8.7	13.4	3.5	6.0
Jan-10	105,790	71,340	34,445	7.0	8.6	5.0	18.6	5.3	7.5	23.9	6.8	8.6	13.4	3.5	6.0
Feb-10	106,700	71,870	34,820	7.1	8.7	5.1	18.8	5.3	7.5	24.2	6.8	8.7	13.5	3.5	6.0
Mar-10	105,930	71,025	34,915	7.0	8.6	5.1	18.3	5.3	7.5	23.6	6.8	8.6	13.1	3.6	6.1
Apr-10	104,475	69,770	34,710	6.9	8.4	5.1	17.4	5.3	7.6	22.3	6.7	8.6	12.6	3.6	6.2
May-10	103,450	68,975	34,465	6.8	8.3	5.0	16.9	5.3	7.5	21.7	6.6	8.6	12.1	3.6	6.2
Jun-10	100,825	67,190	33,645	6.7	8.1	4.9	16.1	5.1	7.5	20.6	6.5	8.5	11.6	3.5	6.2
Jul-10	100,975	66,545	34,425	6.7	8.0	5.0	16.5	5.1	7.5	20.8	6.3	8.5	12.3	3.5	6.3
Outer London															
Jul-09	116,940	78,260	38,665	5.4	6.5	4.0	14.0	4.6	4.1	16.3	5.9	4.7	11.2	3.0	3.3
Aug-09	119,495	78,755	40,730	5.5	6.6	4.2	14.8	4.6	4.1	17.0	5.8	4.7	12.3	3.1	3.4
Sep-09	120,535	79,035	41,480	5.5	6.6	4.3	15.0	4.6	4.2	17.2	5.8	4.7	12.4	3.2	3.5
Oct-09	120,505	79,070	41,430	5.5	6.6	4.3	14.6	4.7	4.2	16.9	5.9	4.8	11.9	3.2	3.6
Nov-09	116,560	76,960	39,610	5.4	6.4	4.1	13.5	4.6	4.2	15.7	5.8	4.7	10.8	3.1	3.5
Dec-09	115,920	77,180	38,735	5.3	6.4	4.0	13.2	4.6	4.2	15.6	5.8	4.8	10.3	3.1	3.5
Jan-10	119,470	79,870	39,595	5.4	6.6	4.0	13.5	4.7	4.3	16.1	6.0	4.9	10.4	3.2	3.5
Feb-10	121,765	81,290	40,470	5.6	6.7	4.1	13.9	4.8	4.3	16.6	6.1	4.9	10.7	3.2	3.5
Mar-10	120,690	80,110	40,580	5.5	6.6	4.1	13.6	4.8	4.3	16.3	6.0	4.9	10.6	3.3	3.5
Apr-10	117,535	77,645	39,915	5.4	6.4	4.1	12.7	4.7	4.3	15.1	5.9	4.8	9.9	3.3	3.5
May-10	114,675	75,485	39,190	5.2	6.3	4.0	12.0	4.6	4.2	14.3	5.7	4.7	9.2	3.2	3.6
Jun-10	111,020	72,710	38,305	5.1	6.0	3.9	11.4	4.5	4.1	13.6	5.6	4.6	8.9	3.2	3.5
Jul-10	111,025	71,795	39,240	5.1	5.9	4.0	12.0	4.4	4.1	14.0	5.4	4.5	9.7	3.2	3.5
Greater London															
Jul-09	218,680	147,125	71,550	6.0	7.3	4.3	15.6	4.9	5.0	18.8	6.3	5.9	12.2	3.2	4.0
Aug-09	223,920	148,670	75,250	6.1	7.4	4.6	16.6	4.9	5.1	19.6	6.3	5.9	13.4	3.3	4.1
Sep-09	226,375	149,440	76,900	6.2	7.4	4.7	16.9	4.9	5.2	19.9	6.3	5.9	13.6	3.4	4.2
Oct-09	227,605	150,370	77,250	6.2	7.5	4.7	16.6	5.0	5.3	19.8	6.3	6.0	13.1	3.4	4.3
Nov-09	222,105	147,370	74,720	6.1	7.3	4.5	15.6	4.9	5.2	18.8	6.2	6.0	12.2	3.4	4.3
Dec-09	220,165	147,170	72,970	6.0	7.3	4.4	15.2	4.9	5.3	18.5	6.2	6.0	11.5	3.3	4.3
Jan-10	225,260	151,210	74,040	6.1	7.4	4.4	15.4	5.0	5.3	18.9	6.4	6.1	11.6	3.3	4.3
Feb-10	228,465	153,160	75,290	6.2	7.5	4.5	15.8	5.0	5.3	19.4	6.4	6.1	11.9	3.4	4.3
Mar-10	226,620	151,135	75,495	6.1	7.4	4.5	15.4	5.0	5.3	18.9	6.4	6.1	11.6	3.4	4.4
Apr-10	222,010	147,415	74,625	6.0	7.2	4.5	14.5	5.0	5.3	17.7	6.3	6.1	10.9	3.4	4.4
May-10	218,125	144,460	73,655	5.9	7.1	4.4	13.8	4.9	5.3	17.0	6.2	6.0	10.4	3.4	4.4
Jun-10	211,845	139,900	71,950	5.7	6.9	4.3	13.2	4.8	5.2	16.1	6.0	5.9	9.9	3.3	4.4
Jul-10	212,000	138,340	73,665	5.7	6.8	4.4	13.7	4.7	5.2	16.4	5.8	5.8	10.7	3.3	4.4
Great Britain															
Jul-09	1,516,900	1,108,315	408,585	5.6	7.3	3.4	12.5	5.0	3.8	15.2	7.1	4.7	9.0	2.5	2.5
Aug-09	1,543,815	1,115,335	428,480	5.7	7.3	3.5	13.0	5.0	3.8	15.7	7.1	4.7	9.6	2.6	2.6
Sep-09	1,532,715	1,104,770	427,945	5.6	7.3	3.5	13.0	5.0	3.8	15.6	7.0	4.6	9.6	2.6	2.6
Oct-09	1,524,710	1,101,620	423,095	5.6	7.2	3.5	12.7	5.0	3.8	15.5	7.0	4.6	9.3	2.6	2.6
Nov-09	1,511,200	1,098,170	413,030	5.5	7.2	3.4	12.4	5.0	3.8	15.2	7.0	4.7	8.8	2.6	2.6
Dec-09	1,507,735	1,102,860	404,875	5.5	7.3	3.4	12.3	5.0	3.8	15.2	7.1	4.7	8.4	2.6	2.6
Jan-10	1,591,510	1,165,055	426,455	5.8	7.6	3.5	12.9	5.3	3.9	16.0	7.5	4.9	8.8	2.7	2.7
Feb-10	1,593,895	1,161,880	432,015	5.8	7.6	3.6	13.1	5.3	3.9	16.3	7.4	4.8	9.0	2.7	2.7
Mar-10	1,551,750	1,125,655	426,095	5.7	7.4	3.5	12.6	5.2	3.8	15.6	7.2	4.7	8.7	2.7	2.7
Apr-10	1,506,125	1,086,570	419,555	5.5	7.1	3.5	11.8	5.1	3.8	14.7	7.0	4.6	8.2	2.8	2.7
May-10	1,441,580	1,035,590	405,990	5.3	6.8	3.3	11.0	4.9	3.6	13.7	6.8	4.4	7.7	2.7	2.6
Jun-10	1,383,950	989,380	394,570	5.0	6.5	3.3	10.5	4.7	3.5	12.8	6.5	4.2	7.4	2.7	2.6
Jul-10	1,379,390	973,190	406,200	5.0	6.4	3.3	10.7	4.7	3.4	12.9	6.4	4.1	8.0	2.7	2.5

Source: Claimant count – Office for National Statistics (Jobcentre Plus administrative system) & GLA estimates

Table 7: Claimant rates, London boroughs, July 2009 to July 2010

	Jul-09	Aug-09	Sep-09	Oct-09	Nov-09	Dec-09	Jan-10	Feb-10	Mar-10	Apr-10	May-10	Jun-10	Jul-10
City of London	3.0	2.9	2.9	3.1	3.1	2.9	2.9	2.8	2.7	2.7	2.6	2.4	2.2
Barking & Dagenham	8.6	8.8	8.7	8.8	8.5	8.7	8.7	9.1	9.3	9.0	9.1	8.6	8.7
Barnet	4.7	4.7	4.8	4.8	4.6	4.5	4.6	4.8	4.7	4.5	4.4	4.3	4.4
Bexley	4.7	4.8	4.9	4.8	4.5	4.5	4.6	4.8	4.7	4.6	4.4	4.2	4.2
Brent	7.2	7.3	7.4	7.4	7.1	7.0	7.3	7.6	7.5	7.4	7.3	7.1	7.1
Bromley	4.2	4.4	4.4	4.3	4.0	4.0	4.1	4.1	4.0	3.8	3.7	3.5	3.5
Camden	5.6	5.7	5.9	6.0	6.0	6.0	6.0	5.9	5.9	5.8	5.6	5.5	5.6
Croydon	5.7	6.0	6.0	5.9	5.8	5.7	5.9	6.0	5.9	5.9	5.8	5.6	5.7
Ealing	6.0	6.1	6.3	6.3	6.2	6.2	6.2	6.2	6.2	6.1	5.8	5.6	5.6
Enfield	7.0	7.0	7.3	7.2	7.1	7.1	7.2	7.4	7.5	7.4	7.2	7.0	7.0
Greenwich	6.9	7.0	7.2	6.9	6.6	6.6	6.7	6.8	6.8	6.7	6.5	6.5	6.6
Hackney	9.7	10.0	10.1	10.0	10.0	9.9	9.9	10.0	9.8	9.6	9.6	9.4	9.4
Hammersmith & Fulham	5.7	5.7	5.9	5.8	5.6	5.6	5.5	5.3	5.4	5.3	5.1	5.0	5.0
Haringey	8.5	8.7	8.9	9.1	8.9	8.9	8.6	8.8	8.9	8.8	8.6	8.5	8.5
Harrow	4.3	4.4	4.4	4.5	4.3	4.2	4.3	4.3	4.3	4.1	4.0	3.9	3.9
Havering	4.7	4.8	4.8	4.8	4.5	4.7	4.8	4.9	4.9	4.8	4.7	4.5	4.4
Hillingdon	5.0	5.0	5.1	5.2	5.1	5.1	5.3	5.4	5.3	5.0	4.9	4.6	4.6
Hounslow	4.8	4.8	4.9	4.9	4.8	5.0	4.9	4.9	4.9	4.9	4.6	4.4	4.3
Islington	7.5	7.7	8.0	8.2	8.1	8.0	7.9	7.8	7.6	7.6	7.4	7.2	7.1
Kensington & Chelsea	4.0	4.1	4.3	4.3	4.3	4.3	4.2	4.1	4.2	4.2	4.0	3.9	3.9
Kingston upon Thames	3.3	3.5	3.4	3.4	3.4	3.1	3.2	3.2	3.0	2.9	2.8	2.6	2.6
Lambeth	7.0	7.3	7.3	7.6	7.6	7.4	7.6	7.7	7.7	7.5	7.5	7.1	7.2
Lewisham	6.9	7.3	7.3	7.2	7.0	6.9	7.0	7.0	7.0	6.9	6.9	6.7	6.8
Merton	3.9	4.1	4.1	4.1	4.0	3.8	4.0	4.1	4.0	3.8	3.7	3.5	3.5
Newham	9.3	9.4	9.5	9.5	9.4	9.2	8.8	9.0	8.9	8.8	8.8	8.8	8.8
Redbridge	5.9	6.1	6.1	6.2	5.8	5.9	5.9	6.1	6.1	5.9	5.9	5.7	5.7
Richmond upon Thames	2.8	2.9	2.8	2.8	2.7	2.5	2.6	2.7	2.6	2.4	2.4	2.2	2.2
Southwark	7.1	7.4	7.5	7.6	7.5	7.3	7.4	7.6	7.6	7.5	7.5	7.3	7.3
Sutton	3.9	4.0	3.9	4.0	3.8	3.8	4.0	4.1	3.9	3.7	3.7	3.5	3.5
Tower Hamlets	10.1	10.2	10.2	10.2	10.0	9.8	9.6	9.7	9.6	9.4	9.5	9.3	9.3
Waltham Forest	8.2	8.4	8.4	8.6	8.3	8.4	8.4	8.7	8.7	8.4	8.3	8.1	8.2
Wandsworth	4.0	4.2	4.1	4.2	4.1	4.1	4.2	4.2	4.2	4.1	4.0	3.9	3.8
Westminster	4.4	4.5	4.7	4.7	4.8	4.8	4.8	4.7	4.7	4.7	4.6	4.5	4.5
London	6.0	6.1	6.2	6.2	6.1	6.0	6.1	6.2	6.1	6.0	5.9	5.7	5.7

Source: Claimant count – Office for National Statistics (Jobcentre Plus administrative system) & GLA estimates

For more information please contact Richard Walker, Intelligence Unit,
Greater London Authority, City Hall, The Queen's Walk, London SE1 2AA
Tel: 020 7983 4699 e-mail: richard.walker@london.gov.uk

Data produced in this briefing have been reproduced with the permission of the Controller of Her Majesty's Stationery Office and are © Crown Copyright.