

## The London Plan: Ethnic Group Population Projections

### Background

The Mayor's London Plan is the overall strategic plan for London. It sets out an integrated economic, environmental, transport and social framework for the development of the capital over the next 20-25 years. It is an over-arching document that picks up on the 'places and spaces' aspects of all the other Mayoral strategies, and provides the strategic, London-wide context within which boroughs must set their detailed local planning policies.

On 12th October 2009 the Mayor published his consultation draft revised plan, The London Plan,

<http://www.london.gov.uk/shaping-london/london-plan/>

alongside his draft Transport and Economic Development strategies.

In October 2009 indicative borough population and household projections were published in DMAG Update 13-2009. The only details available at the time were total population and total numbers of households based upon an initial analysis of the impacts of the borough housing provision in the Plan. This Update presents detailed borough level demographic projections, covering population, households and resident labour force, to support the Plan and strategies. Working at borough level and summing to London makes some minor differences in the independently produced London totals published last year.

The most recent fully developed set of London borough projections was the 2008 Round, published in February 2009 in DMAG Briefing 2009-02. The new projections for the Plan differ in the following ways:

- in the base period from 2001 to 2007 the London population follows the total changes seen in the ONS mid-year estimates,
- the borough populations from the 2008 Round High projection have been constrained to the revised London totals in the base period,
- housing development for 2007/08 has been taken from the London Plan Annual Monitoring Report 5 (Table 13). For 2008/09 draft results from the London Development Database have been used, and for 2009/10 and 2010/11 data have been taken from the 2009 Strategic Housing Land Availability Assessment (SHLAA). See <http://www.london.gov.uk/shaping-london/london-plan/docs/strategic-housing-land-study-09.pdf>,
- for new housing development from 2011 to 2031 the projections use the annual average borough housing provision targets for 2011/12 to 2020/21 as published in the London Plan, and
- population was linked to households by the marital status rates and household representative rates as projected in the CLG 2006-based borough-level household projections that were published in March 2009 (see DMAG Update 04-2009).

The GLA ethnic group projections have been demographically modelled based mainly on 2001 Census data, still the most detailed source for information on ethnicity. Therefore modelled output incorporates demographic trends current as at 2001. Specifically all migration flow structures relate to moves between 2000 and 2001. More recent migration patterns will not be reflected in these

projections, for example EU accession migration from Eastern Europe (A8). At present, while there are statistics relating to the estimated inflows of A8 persons to the UK, there are no official statistics on the number of these migrants moving to London, or on those remaining resident in the UK.

Modelled output is for ten ethnic groups that are aggregations of the 16 ethnic categories from the 2001 Census. Categories had to be aggregated to diminish the impact of statistical disclosure control on borough level 2001 Census output for some smaller ethnic categories. As a result the three White categories were aggregated to one group. It should therefore be noted that this White group represents an ethnically diverse population and hence includes, amongst others, White Britons, Australians and Europeans such as the Irish and Poles.

Population outputs from the modelling process are available for the aggregated groups only. In the context of the GLA ethnic group classification the term BAME (Black, Asian and Minority Ethnic) is used to represent all ethnic groups except the White group (aggregated from the three White Census categories, Table 1).

**Table 1: GLA projection aggregated ethnic groups and how they relate to the 2001 Census categories**

White/ BAME <sup>1</sup>	GLA Aggregated Ethnic Group (AEG) <sup>2</sup>	ONS 2001 Census Ethnic Category
White	White	White: British White: Irish White: Other White
BAME <sup>1</sup>	Black Caribbean	Black or Black British: Caribbean
	Black African	Black or Black British: African
	Black Other	Black or Black British: Other Black Mixed: White & Black Caribbean Mixed: White & Black African
	Indian	Asian or Asian British: Indian
	Pakistani	Asian or Asian British: Pakistani
	Bangladeshi	Asian or Asian British: Bangladeshi
	Chinese	Chinese or Other: Chinese
	Other Asian	Mixed: White & Asian Asian or Asian British: Other Asian
Other	Mixed: Other Mixed Chinese or Other: Other	

<sup>1</sup> Black, Asian and Minority Ethnic (all groups except the three White 2001 Census Ethnic Categories)

<sup>2</sup> approximate to the ten Ethnic Groups used in the 1991 Census, using best fit comparison described in DMAG Briefing 2003/9, 2001 Census Key Statistics: Ethnicity, religion and country of birth

## Summary of Ethnic Projections

- The resident population of London is projected to increase after 2006 by 1.34 million to 8.87 million by 2031, an increase of 18.0 per cent.
- Having declined from 5.22 million in 2001 to 5.06 million in 2009, the White population is projected to grow over the remainder of the projection period, surpassing the 2001 population by 2024 and reaching 5.38 million in 2031.
- All individual BAME (Black, Asian and Minority Ethnic) groups are projected to grow throughout the projection period. The BAME population will grow by 1.05 million between 2006 and 2031.
- Between 2006 and 2031 78 per cent of the population increase is projected to be from BAME ethnic groups. This is mainly a consequence of the younger age structure of these populations. However, this disguises the significant migrant churn of all ethnic groups that takes place in the capital.
- Between 2006 and 2031 the largest percentage increases are projected to be in the Other, Chinese, Bangladeshi and Pakistani ethnic groups, which will increase by 79 per cent, 55 per cent, 51 per cent and 50 per cent respectively.
- Between 2006 and 2031 the Black Caribbean ethnic group is projected to increase by the smallest proportional amount of all individual BAME groups, 18 per cent.
- Three ethnic groups are projected to account for 42 per cent of the total population growth between 2006 and 2031. These ethnic groups are the residual Other ethnic group (15 per cent) the Black African ethnic group (14 per cent), and the Indian ethnic group (13 per cent).
- By 2031 39 per cent of London's population is projected to be from a BAME group. This compares with 32 per cent in 2006 and 29 per cent in 2001. As a comparison in 1991 all ethnic groups other than White were estimated to form 20 per cent of London's population. It is clear that while there is a significant projected increase in London's BAME population between 2001 and 2031 the growth rate is not accelerating dramatically when viewed as a proportion of London's total population.
- By 2025 seven London boroughs are projected to have BAME populations that represent over 50 per cent of the total. Harrow, Redbridge, Ealing, Hounslow, and Croydon will join Brent and Newham both of which had more than 50 per cent BAME populations in 2001. In Tower Hamlets the BAME population is projected to represent just under 50 per cent of the total throughout the period 2004 to 2031.
- At all ages, with the exception of the 25-29 year old age band, the BAME population will increase its share as a proportion of the total London population. Fifty-three per cent of

15-19 year olds in 2031 are projected to be from a BAME group compared with 42 per cent in 2006.

- The BAME proportion of the 25-29 year old age band is projected to remain static through the projection period, with 30 per cent of this age band from a BAME group in 2031 as well as in 2006. This is a result of high in-migration within this age band into London from the rest of the UK and the rest of the world, both of which flows are predominantly White.
- By 2031 34 per cent of London's population aged over 60 is projected to be from a BAME group. In 2006 this was 18 per cent.
- Between 2006 and 2031 London's population of economically active ages is projected to grow by 840 thousand, an increase of 16 per cent. Sixty-nine per cent of the growth will be attributable to the BAME population. This is on the basis of the EU definition of economically active ages (males and females both aged 16-64) in the process of being adopted in the UK for the transition period for the raising of the state pension age for women.
- The ethnic composition of London's population of economically active ages will change between 2006 and 2031. In 2006 sixty-nine per cent were from the White group and conversely 31 per cent were from a BAME group. By 2031, the White group will represent 64 per cent of this age group and hence the BAME groups will increase to 36 per cent.
- About 70 per cent of London's average natural change between 2006 and 2031 is attributable to the BAME groups. This is due to the younger age structure of the BAME populations and mainly a function of relatively fewer deaths, only 24 per cent of the projected London total deaths being from BAME groups.
- Barking & Dagenham is projected to experience an increase in the proportion of its BAME population by nearly 20 percentage points between 2006 and 2031. Six other London boroughs are projected to have increases in their BAME population of over 10 percentage points; Croydon, Redbridge, Harrow, Greenwich, Hillingdon and Hounslow.

## Results

The 2008 Round London Plan projections indicate the total London population increasing from 7.34 million in 2001 to 7.53 million in 2006, and rising to 8.87 million in 2031. The White population will increase from 5.08 million in 2006 to 5.38 million in 2031, whereas the BAME population will increase from 2.44 million in 2006 to 3.49 million in 2031. Total and individual ethnic group population are summarised in Table 2.

**Table 2: Total Population: All Ethnic Groups, 2001-2031**

	2001	2006	2011	2016	2021	2026	2031
<b>Total Population</b>	<b>7,336,900</b>	<b>7,526,900</b>	<b>7,796,600</b>	<b>8,079,500</b>	<b>8,346,800</b>	<b>8,609,600</b>	<b>8,868,700</b>
<b>White</b>	<b>5,216,100</b>	<b>5,082,600</b>	<b>5,068,400</b>	<b>5,105,600</b>	<b>5,171,800</b>	<b>5,265,600</b>	<b>5,376,400</b>
<b>Black Caribbean</b>	351,000	364,100	378,600	392,600	405,500	418,100	430,600
<b>Black African</b>	389,700	454,800	506,500	551,800	588,600	620,400	648,300
<b>Black Other</b>	169,200	194,900	219,100	239,600	256,700	271,600	284,400
<b>Indian</b>	446,600	493,800	536,700	575,300	608,600	636,700	661,300
<b>Pakistani</b>	146,400	171,300	194,600	214,300	230,400	244,200	256,500
<b>Bangladeshi</b>	158,200	179,800	202,500	223,000	240,300	255,900	271,500
<b>Other Asian</b>	198,400	231,400	260,500	284,700	303,400	318,000	330,100
<b>Chinese</b>	82,400	98,900	112,500	124,700	135,200	144,500	152,900
<b>Other</b>	178,900	255,300	317,400	367,900	406,300	434,700	456,700
<b>BAME</b>	<b>2,120,800</b>	<b>2,444,300</b>	<b>2,728,200</b>	<b>2,973,900</b>	<b>3,175,000</b>	<b>3,344,000</b>	<b>3,492,300</b>

*Figures may not add due to rounding*

The projected trends of the total, White, and BAME populations are shown graphically in Chart 1. Over the next 20 years the growth in the White population will be more gradual than in the BAME population as a whole.

**Chart 1: Greater London: projected population, 2001 to 2031**

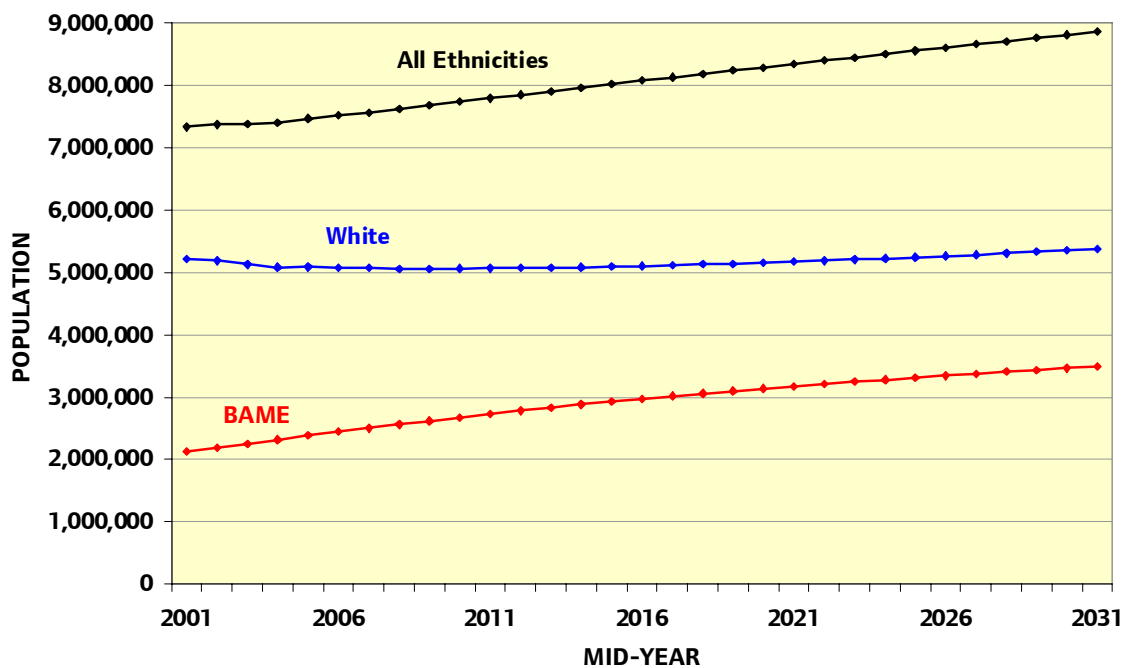


Table 3 shows the ethnic compositions. The proportion of the White population decreased from 71.1 per cent in 2001 to 67.5 per cent in 2006, and will continue decreasing to 60.6 per cent in 2031. The proportion of the BAME population as a whole increased from 28.9 per cent in 2001 to 32.5 per cent in 2006, and will continue increasing to 39.4 per cent in 2031. This is shown graphically in Chart 2. Over the next 20 years the proportion of each individual BAME group will increase, with the exception of the Black Caribbean group for which the proportion will remain virtually constant.

**Table 3: Total Population: Distribution amongst Ethnic Groups, 2001-2031**

Total Population (%)	2001	2006	2011	2016	2021	2026	2031
<b>White</b>	<b>71.09</b>	<b>67.53</b>	<b>65.01</b>	<b>63.19</b>	<b>61.96</b>	<b>61.16</b>	<b>60.62</b>
<b>Black Caribbean</b>	4.78	4.84	4.86	4.86	4.86	4.86	4.85
<b>Black African</b>	5.31	6.04	6.50	6.83	7.05	7.21	7.31
<b>Black Other</b>	2.31	2.59	2.81	2.97	3.08	3.15	3.21
<b>Indian</b>	6.09	6.56	6.88	7.12	7.29	7.40	7.46
<b>Pakistani</b>	2.00	2.28	2.50	2.65	2.76	2.84	2.89
<b>Bangladeshi</b>	2.16	2.39	2.60	2.76	2.88	2.97	3.06
<b>Other Asian</b>	2.70	3.07	3.34	3.52	3.63	3.69	3.72
<b>Chinese</b>	1.12	1.31	1.44	1.54	1.62	1.68	1.72
<b>Other</b>	2.44	3.39	4.07	4.55	4.87	5.05	5.15
<b>BAME</b>	<b>28.91</b>	<b>32.47</b>	<b>34.99</b>	<b>36.81</b>	<b>38.04</b>	<b>38.84</b>	<b>39.38</b>

**Chart 2: Greater London: changes in the proportions of the White and BAME populations, 2001 to 2031 (percentages)**

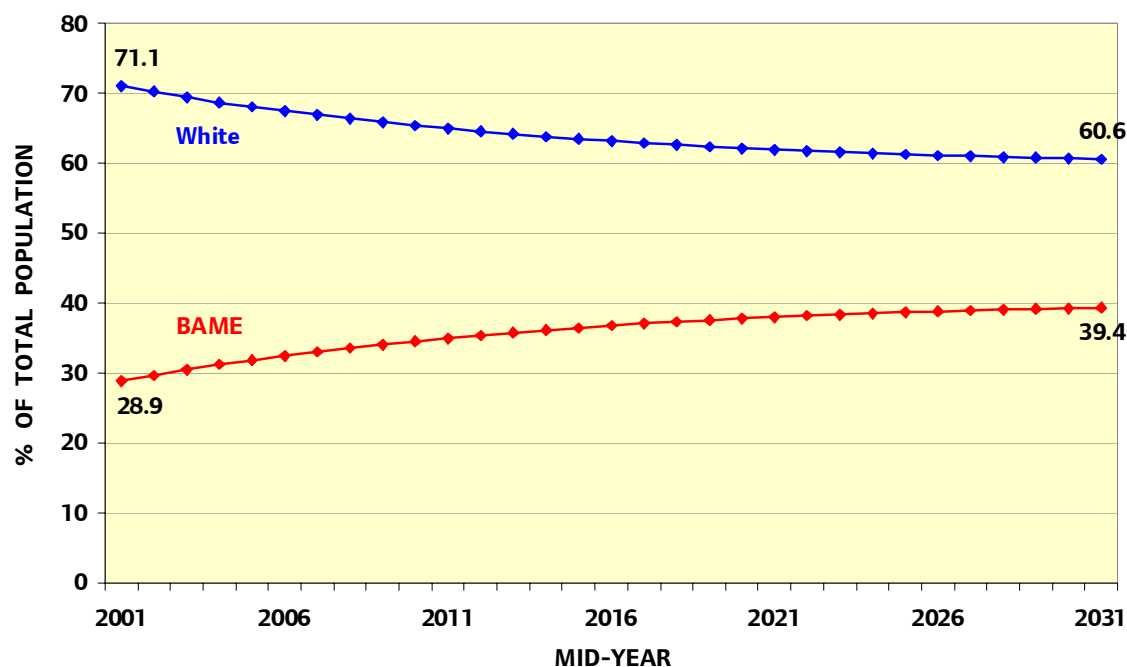
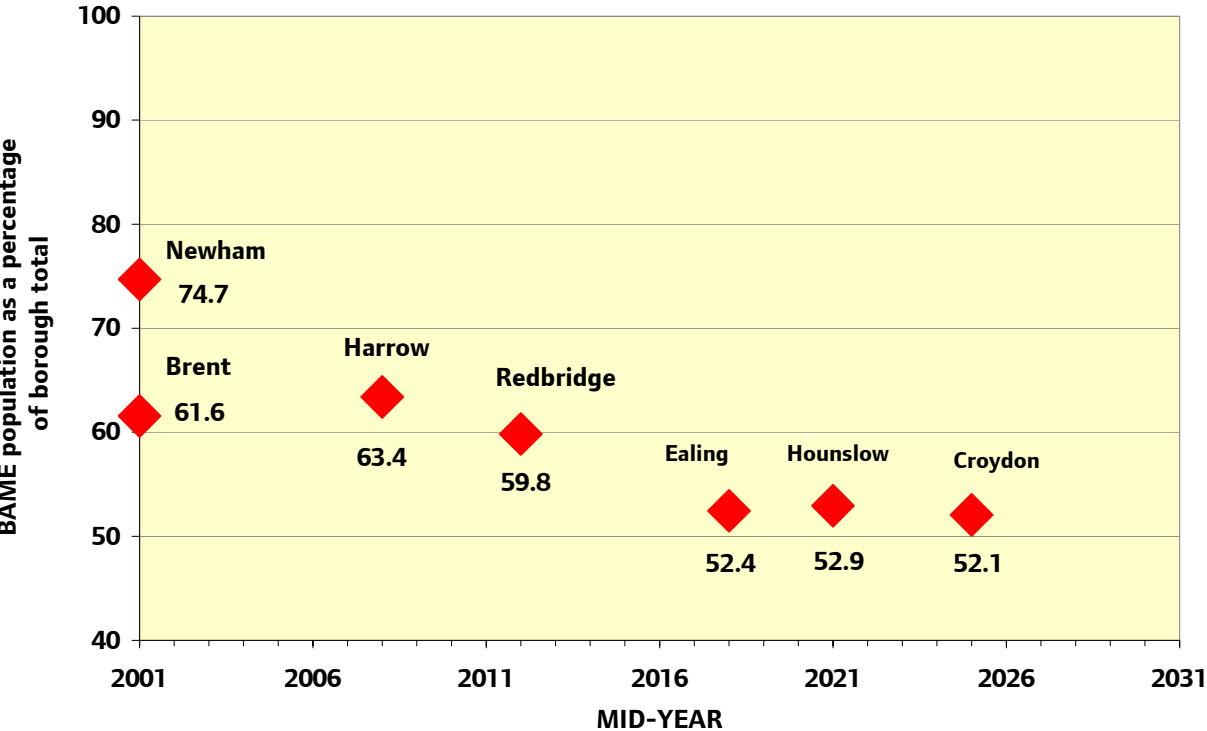


Chart 3 shows the timeline of those London boroughs that will have a majority BAME population by 2031. In addition the chart plots (along the vertical axis) the percentage of the BAME population as a proportion of the total in 2031. For example, Newham had a BAME majority in 2001 (60.7 per cent), hence the placement of the marker at 2001, but by 2031 this is projected to increase to 74.7 per cent, which is shown along the vertical axis. The horizontal axis plots the year in which the borough BAME population is projected to reach 50 per cent.

Harrow is projected to overtake its neighbouring borough, Brent, over the projection period. In 2001 Brent was one of the two boroughs with a BAME majority (54.7 per cent) however by 2031 this majority is expected to increase to 61.6 per cent. Harrow is projected to have a 63.4 per cent BAME majority in 2031, having reached 50 per cent in 2008, however in 2001 the BAME population represented only 41.3 per cent of all residents in Harrow.

**Chart 3: Timeline of London Boroughs reaching a BAME majority**



More detailed data giving projected ethnic populations for each borough in 2001, 2006, 2011, 2016, 2021, 2026 and 2031 are presented in Appendix Tables 1 to 7. In Tower Hamlets the BAME population is projected to represent just under 50% of the total throughout the period 2004 to 2031.

The ethnic breakdown of London's population of economically active ages in 2006 and in 2031 is shown in Table 4, together with a breakdown of the change over the period. The total population in the economically active ages is projected to grow by 840 thousand between 2006 and 2031, an increase of 16.3 per cent. Sixty-nine per cent of the growth will be attributable to the BAME population. This is on the basis of the EU definition (males and females both aged 16-64) in the process of being adopted in the UK.

**Table 4: Change in the population at economically active ages (males and females aged 16-64), 2006-2031**

	2006	2006 %	2031	2031 %	2006-31 Change	2006-31 % Change	2006-31 % of Change
<b>Total Population</b>	<b>5,168,700</b>	<b>100.0</b>	<b>6,008,900</b>	<b>100.0</b>	<b>840,200</b>	<b>16.3</b>	<b>100.0</b>
<b>White</b>	<b>3,566,900</b>	<b>69.0</b>	<b>3,826,100</b>	<b>63.7</b>	<b>259,300</b>	<b>7.3</b>	<b>30.9</b>
<b>Black Caribbean</b>	244,400	4.7	274,800	4.6	30,400	12.5	3.6
<b>Black African</b>	294,800	5.7	411,600	6.8	116,800	39.6	13.9
<b>Black Other</b>	97,200	1.9	145,400	2.4	48,200	49.6	5.7
<b>Indian</b>	354,600	6.9	445,600	7.4	91,000	25.7	10.8
<b>Pakistani</b>	110,200	2.1	158,700	2.6	48,500	44.0	5.8
<b>Bangladeshi</b>	104,600	2.0	164,700	2.7	60,100	57.5	7.2
<b>Chinese</b>	79,400	1.5	113,000	1.9	33,600	42.3	4.0
<b>Other Asian</b>	148,600	2.9	196,400	3.3	47,700	32.1	5.7
<b>Other</b>	168,100	3.3	272,600	4.5	104,500	62.2	12.4
<b>BAME</b>	<b>1,601,900</b>	<b>31.0</b>	<b>2,182,800</b>	<b>36.3</b>	<b>580,900</b>	<b>36.3</b>	<b>69.1</b>

*Figures may not add due to rounding*

**Appendix Table 1: GLA Ethnic Group Population Projections, London Boroughs, 2001**

	Total	White	Black Caribbean	Black African	Black Other	Indian	Pakistani	Bangladeshi	Other Asian	Chinese	Other	BAME	% BAME
<b>Camden</b>	<b>202,800</b>	148,500	3,700	12,000	3,900	4,700	1,300	12,800	4,200	3,600	8,000	<b>54,300</b>	<b>26.8</b>
<b>City of London</b>	<b>7,300</b>	6,200	0	100	0	200	0	300	100	200	200	<b>1,100</b>	<b>15.0</b>
<b>Kensington and Chelsea</b>	<b>161,100</b>	126,800	4,100	6,100	3,300	3,300	1,200	1,100	4,000	2,700	8,400	<b>34,300</b>	<b>21.3</b>
<b>Westminster</b>	<b>202,900</b>	148,800	6,200	7,400	4,200	6,400	2,000	5,500	6,700	4,500	11,000	<b>54,100</b>	<b>26.7</b>
<b>Hackney</b>	<b>207,800</b>	123,700	21,300	24,900	9,700	7,800	2,200	6,100	3,300	2,400	6,500	<b>84,100</b>	<b>40.5</b>
<b>Hammersmith and Fulham</b>	<b>169,500</b>	132,200	8,700	8,200	4,900	2,800	1,700	1,000	3,600	1,300	5,100	<b>37,300</b>	<b>22.0</b>
<b>Haringey</b>	<b>223,000</b>	146,500	21,000	20,500	7,900	6,300	2,100	3,100	5,900	2,500	7,200	<b>76,500</b>	<b>34.3</b>
<b>Islington</b>	<b>179,900</b>	135,700	8,700	10,700	5,400	2,900	900	4,300	3,100	3,200	4,900	<b>44,200</b>	<b>24.6</b>
<b>Lambeth</b>	<b>274,600</b>	171,900	32,800	31,800	13,400	5,400	2,700	2,200	4,300	3,400	6,600	<b>102,700</b>	<b>37.4</b>
<b>Lewisham</b>	<b>254,800</b>	168,000	31,100	23,200	11,700	3,600	1,100	1,300	5,400	3,500	5,900	<b>86,800</b>	<b>34.1</b>
<b>Newham</b>	<b>251,200</b>	98,600	18,400	33,100	7,600	30,500	21,400	22,200	9,600	2,400	7,400	<b>152,600</b>	<b>60.7</b>
<b>Southwark</b>	<b>258,100</b>	162,900	20,500	41,500	10,300	3,800	1,200	3,800	3,000	4,700	6,400	<b>95,200</b>	<b>36.9</b>
<b>Tower Hamlets</b>	<b>202,100</b>	104,200	5,300	6,800	3,400	3,100	1,500	67,200	3,200	3,700	3,600	<b>97,900</b>	<b>48.5</b>
<b>Wandsworth</b>	<b>272,200</b>	212,900	13,100	10,300	6,600	7,700	5,600	1,100	6,600	2,300	5,900	<b>59,300</b>	<b>21.8</b>
<b>Barking and Dagenham</b>	<b>165,300</b>	140,700	3,500	7,400	2,700	3,700	3,100	700	1,500	800	1,300	<b>24,600</b>	<b>14.9</b>
<b>Barnet</b>	<b>319,800</b>	236,700	4,200	13,900	4,400	27,600	4,100	1,500	9,600	6,500	11,400	<b>83,100</b>	<b>26.0</b>
<b>Bexley</b>	<b>219,100</b>	200,100	1,800	4,100	1,700	5,600	400	400	2,100	1,600	1,400	<b>18,900</b>	<b>8.6</b>
<b>Brent</b>	<b>271,300</b>	123,000	28,200	21,300	8,900	49,900	11,000	1,200	15,800	2,900	9,300	<b>148,300</b>	<b>54.7</b>
<b>Bromley</b>	<b>295,600</b>	270,700	4,600	3,400	3,100	4,500	700	900	3,300	1,800	2,700	<b>24,800</b>	<b>8.4</b>
<b>Croydon</b>	<b>335,500</b>	235,300	26,400	14,900	9,600	21,600	7,600	1,800	10,600	2,200	5,500	<b>100,200</b>	<b>29.9</b>
<b>Ealing</b>	<b>308,400</b>	181,200	13,800	11,400	6,400	50,800	11,600	1,100	15,900	3,700	12,600	<b>127,200</b>	<b>41.2</b>
<b>Enfield</b>	<b>278,200</b>	214,400	14,800	12,100	5,900	11,100	1,800	3,600	7,600	2,100	5,000	<b>63,800</b>	<b>22.9</b>
<b>Greenwich</b>	<b>217,300</b>	167,500	6,800	15,600	4,900	9,500	1,900	1,200	3,400	2,600	3,800	<b>49,800</b>	<b>22.9</b>
<b>Harrow</b>	<b>210,700</b>	123,700	6,200	5,800	3,000	46,200	4,400	1,000	13,100	2,600	4,800	<b>87,000</b>	<b>41.3</b>
<b>Havering</b>	<b>224,800</b>	213,900	1,600	1,400	1,300	2,800	500	200	1,400	900	1,000	<b>10,900</b>	<b>4.9</b>
<b>Hillingdon</b>	<b>246,100</b>	194,500	3,300	4,300	2,600	23,600	3,900	1,500	6,600	1,900	3,900	<b>51,600</b>	<b>21.0</b>
<b>Hounslow</b>	<b>217,100</b>	140,700	2,900	5,900	3,000	37,700	9,300	1,200	8,000	1,900	6,500	<b>76,300</b>	<b>35.2</b>
<b>Kingston upon Thames</b>	<b>149,100</b>	125,900	800	1,400	1,100	5,400	1,900	400	5,300	2,000	4,700	<b>23,200</b>	<b>15.5</b>
<b>Merton</b>	<b>191,000</b>	143,300	7,100	6,500	3,600	8,200	4,600	1,700	8,600	2,500	4,900	<b>47,700</b>	<b>25.0</b>
<b>Redbridge</b>	<b>242,200</b>	153,700	9,200	8,000	3,800	33,800	15,200	4,300	9,200	2,000	2,900	<b>88,400</b>	<b>36.5</b>
<b>Richmond upon Thames</b>	<b>174,100</b>	158,400	700	800	1,300	4,300	700	600	2,700	1,300	3,400	<b>15,700</b>	<b>9.0</b>
<b>Sutton</b>	<b>181,400</b>	161,800	2,100	2,200	1,900	4,200	1,200	600	3,900	1,200	2,300	<b>19,600</b>	<b>10.8</b>
<b>Waltham Forest</b>	<b>222,800</b>	143,600	18,100	13,000	7,600	7,800	17,700	2,200	6,800	1,500	4,500	<b>79,200</b>	<b>35.6</b>
<b>Central Boroughs *</b>	<b>574,200</b>	430,400	14,100	25,600	11,500	14,500	4,600	19,800	15,100	10,900	27,600	<b>143,800</b>	<b>25.0</b>
<b>Rest of Inner Boroughs</b>	<b>2,293,100</b>	1,456,500	180,900	210,900	81,000	74,000	40,500	112,400	48,000	29,500	59,400	<b>836,600</b>	<b>36.5</b>
<b>Inner London</b>	<b>2,867,300</b>	1,886,900	195,000	236,500	92,500	88,500	45,100	132,200	63,100	40,400	87,100	<b>980,400</b>	<b>34.2</b>
<b>Outer London</b>	<b>4,469,600</b>	3,329,200	156,000	153,200	76,700	358,100	101,300	26,000	135,300	41,900	91,900	<b>1,140,400</b>	<b>25.5</b>
<b>Greater London</b>	<b>7,336,900</b>	5,216,100	351,000	389,700	169,200	446,600	146,400	158,200	198,400	82,400	178,900	<b>2,120,800</b>	<b>28.9</b>

Figures may not add due to rounding

\* Central Boroughs are: Camden, City of London, Kensington and Chelsea, and Westminster

**Appendix Table 2: GLA Ethnic Group Population Projections, London Boroughs, 2006**

	Total	White	Black Caribbean	Black African	Black Other	Indian	Pakistani	Bangladeshi	Other Asian	Chinese	Other	BAME	% BAME
<b>Camden</b>	<b>203,400</b>	144,900	3,300	12,600	4,000	5,500	1,300	13,700	4,300	4,000	9,800	<b>58,600</b>	<b>28.8</b>
<b>City of London</b>	<b>8,800</b>	7,000	100	200	100	300	100	200	200	200	400	<b>1,800</b>	<b>20.7</b>
<b>Kensington and Chelsea</b>	<b>166,400</b>	129,400	3,900	6,100	3,400	3,600	1,200	1,200	4,000	3,700	9,900	<b>37,000</b>	<b>22.3</b>
<b>Westminster</b>	<b>210,400</b>	151,500	5,700	6,500	4,300	8,200	2,100	5,400	7,100	5,800	13,700	<b>58,900</b>	<b>28.0</b>
<b>Hackney</b>	<b>217,700</b>	128,300	20,300	26,200	11,200	7,900	1,900	6,700	3,800	2,700	8,600	<b>89,300</b>	<b>41.0</b>
<b>Hammersmith and Fulham</b>	<b>175,800</b>	134,600	8,400	8,700	5,400	2,600	1,900	1,200	4,600	1,600	6,800	<b>41,200</b>	<b>23.4</b>
<b>Haringey</b>	<b>230,300</b>	149,300	20,500	20,900	8,600	6,100	2,400	3,600	6,000	3,200	9,800	<b>81,000</b>	<b>35.2</b>
<b>Islington</b>	<b>188,900</b>	140,900	8,500	10,200	5,900	3,400	1,100	5,000	3,400	4,200	6,400	<b>48,000</b>	<b>25.4</b>
<b>Lambeth</b>	<b>286,000</b>	178,800	31,400	33,800	14,400	5,000	2,700	2,500	5,100	3,400	8,800	<b>107,200</b>	<b>37.5</b>
<b>Lewisham</b>	<b>263,500</b>	162,100	34,100	28,300	13,700	5,300	1,300	1,300	6,300	3,600	7,600	<b>101,500</b>	<b>38.5</b>
<b>Newham</b>	<b>259,300</b>	83,300	18,200	39,300	8,100	31,300	26,300	26,200	11,600	3,500	11,500	<b>176,000</b>	<b>67.9</b>
<b>Southwark</b>	<b>267,100</b>	165,200	19,600	42,700	11,100	5,000	1,200	4,100	3,700	5,700	8,700	<b>102,000</b>	<b>38.2</b>
<b>Tower Hamlets</b>	<b>221,000</b>	111,500	4,800	6,500	3,500	3,900	1,400	74,300	3,700	6,000	5,300	<b>109,500</b>	<b>49.5</b>
<b>Wandsworth</b>	<b>282,700</b>	221,000	11,800	10,200	7,000	8,100	5,400	1,300	6,700	2,600	8,700	<b>61,800</b>	<b>21.8</b>
<b>Barking and Dagenham</b>	<b>169,100</b>	128,300	4,900	14,500	4,400	4,900	4,300	1,300	2,100	1,800	2,600	<b>40,700</b>	<b>24.1</b>
<b>Barnet</b>	<b>323,900</b>	225,500	4,000	16,800	5,600	29,600	5,000	1,600	10,500	7,900	17,500	<b>98,400</b>	<b>30.4</b>
<b>Bexley</b>	<b>217,900</b>	193,400	2,300	7,400	2,600	5,300	400	500	2,500	1,300	2,300	<b>24,500</b>	<b>11.3</b>
<b>Brent</b>	<b>274,100</b>	117,000	27,800	22,400	9,900	52,400	11,800	1,100	17,200	3,200	11,400	<b>157,100</b>	<b>57.3</b>
<b>Bromley</b>	<b>299,400</b>	266,700	6,000	5,600	4,100	5,400	800	1,100	3,800	1,900	4,100	<b>32,700</b>	<b>10.9</b>
<b>Croydon</b>	<b>334,500</b>	211,600	31,200	20,000	12,100	25,800	9,600	2,300	12,300	1,900	7,600	<b>122,900</b>	<b>36.7</b>
<b>Ealing</b>	<b>310,300</b>	171,800	13,600	11,100	6,800	49,600	12,500	1,200	17,300	4,300	22,200	<b>138,500</b>	<b>44.6</b>
<b>Enfield</b>	<b>287,900</b>	206,100	17,500	17,200	7,500	12,600	2,200	4,500	9,100	2,800	8,300	<b>81,800</b>	<b>28.4</b>
<b>Greenwich</b>	<b>230,500</b>	162,900	7,600	24,700	6,300	10,700	2,700	1,600	5,200	3,600	5,300	<b>67,600</b>	<b>29.3</b>
<b>Harrow</b>	<b>216,000</b>	111,200	6,900	7,100	3,500	54,000	5,400	1,100	16,700	2,800	7,200	<b>104,800</b>	<b>48.5</b>
<b>Havering</b>	<b>228,200</b>	213,100	2,300	3,200	1,600	3,100	500	200	1,700	1,000	1,500	<b>15,100</b>	<b>6.6</b>
<b>Hillingdon</b>	<b>248,400</b>	181,900	4,300	7,100	3,500	27,700	5,000	2,000	9,200	2,200	5,600	<b>66,500</b>	<b>26.8</b>
<b>Hounslow</b>	<b>222,500</b>	132,700	2,900	6,600	3,500	43,600	10,800	1,800	8,700	2,100	9,800	<b>89,800</b>	<b>40.4</b>
<b>Kingston upon Thames</b>	<b>152,100</b>	121,700	1,000	1,900	1,300	6,500	2,400	500	6,200	2,600	8,100	<b>30,400</b>	<b>20.0</b>
<b>Merton</b>	<b>194,800</b>	140,000	7,600	7,400	4,400	8,700	5,000	2,000	9,800	2,900	7,100	<b>54,800</b>	<b>28.1</b>
<b>Redbridge</b>	<b>248,200</b>	137,500	10,900	10,900	4,500	39,800	20,100	6,500	11,700	2,100	4,000	<b>110,600</b>	<b>44.6</b>
<b>Richmond upon Thames</b>	<b>181,900</b>	162,400	700	1,000	1,800	5,100	800	600	3,400	1,300	4,900	<b>19,500</b>	<b>10.7</b>
<b>Sutton</b>	<b>182,700</b>	156,400	2,700	3,300	2,400	5,100	2,000	600	5,300	1,300	3,500	<b>26,300</b>	<b>14.4</b>
<b>Waltham Forest</b>	<b>223,000</b>	134,500	19,600	14,400	8,600	7,700	19,600	2,500	8,100	1,700	6,400	<b>88,500</b>	<b>39.7</b>
<b>Central Boroughs</b>	<b>589,100</b>	432,800	13,000	25,300	11,800	17,700	4,800	20,600	15,600	13,700	33,800	<b>156,300</b>	<b>26.5</b>
<b>Rest of Inner Boroughs</b>	<b>2,392,300</b>	1,475,000	177,500	226,800	88,800	78,600	45,700	126,300	54,900	36,500	82,300	<b>917,400</b>	<b>38.3</b>
<b>Inner London</b>	<b>2,981,400</b>	1,907,700	190,500	252,100	100,700	96,300	50,500	146,900	70,500	50,200	116,100	<b>1,073,700</b>	<b>36.0</b>
<b>Outer London</b>	<b>4,545,500</b>	3,174,800	173,600	202,700	94,200	397,500	120,900	33,000	160,900	48,700	139,200	<b>1,370,600</b>	<b>30.2</b>
<b>Greater London</b>	<b>7,526,900</b>	5,082,600	364,100	454,800	194,900	493,800	171,300	179,800	231,400	98,900	255,300	<b>2,444,300</b>	<b>32.5</b>

Figures may not add due to rounding

\* Central Boroughs are: Camden, City of London, Kensington and Chelsea, and Westminster

**Appendix Table 3: GLA Ethnic Group Population Projections, London Boroughs, 2011**

	Total	White	Black Caribbean	Black African	Black Other	Indian	Pakistani	Bangladeshi	Other Asian	Chinese	Other	BAME	% BAME
<b>Camden</b>	<b>212,200</b>	148,700	3,100	13,300	4,100	6,200	1,400	15,000	4,600	4,400	11,400	<b>63,500</b>	<b>29.9</b>
<b>City of London</b>	<b>9,700</b>	7,400	100	200	100	400	100	200	300	300	600	<b>2,400</b>	<b>24.3</b>
<b>Kensington and Chelsea</b>	<b>170,800</b>	132,000	3,600	6,000	3,400	3,900	1,200	1,200	4,000	4,500	11,100	<b>38,900</b>	<b>22.8</b>
<b>Westminster</b>	<b>219,000</b>	155,500	5,400	6,000	4,400	9,700	2,300	5,300	7,400	6,800	16,200	<b>63,500</b>	<b>29.0</b>
<b>Hackney</b>	<b>232,000</b>	136,300	19,900	27,800	12,400	8,200	1,800	7,400	4,300	3,100	10,700	<b>95,700</b>	<b>41.2</b>
<b>Hammersmith and Fulham</b>	<b>178,300</b>	134,200	8,200	9,100	5,700	2,400	2,100	1,300	5,400	1,700	8,100	<b>44,100</b>	<b>24.7</b>
<b>Haringey</b>	<b>238,600</b>	153,300	20,100	21,300	9,300	6,000	2,600	4,100	6,300	3,700	11,800	<b>85,300</b>	<b>35.7</b>
<b>Islington</b>	<b>205,700</b>	152,700	8,700	10,400	6,500	4,000	1,300	5,700	3,900	4,900	7,700	<b>53,100</b>	<b>25.8</b>
<b>Lambeth</b>	<b>298,800</b>	187,200	30,700	35,500	15,300	4,900	2,800	2,800	5,700	3,500	10,400	<b>111,600</b>	<b>37.3</b>
<b>Lewisham</b>	<b>271,900</b>	160,200	36,500	31,300	15,800	5,800	1,500	1,400	6,900	3,500	8,800	<b>111,700</b>	<b>41.1</b>
<b>Newham</b>	<b>268,100</b>	75,300	18,000	42,700	8,500	31,700	30,200	30,100	12,900	4,200	14,400	<b>192,800</b>	<b>71.9</b>
<b>Southwark</b>	<b>286,100</b>	176,200	19,600	44,400	12,200	6,000	1,400	4,600	4,500	6,600	10,800	<b>110,000</b>	<b>38.4</b>
<b>Tower Hamlets</b>	<b>249,000</b>	125,900	4,700	6,800	3,800	4,900	1,500	82,000	4,400	8,100	6,900	<b>123,000</b>	<b>49.4</b>
<b>Wandsworth</b>	<b>297,500</b>	232,700	11,000	10,300	7,300	8,500	5,300	1,400	7,000	2,900	11,000	<b>64,800</b>	<b>21.8</b>
<b>Barking and Dagenham</b>	<b>177,400</b>	121,400	6,100	20,800	6,300	6,000	5,600	1,900	2,800	2,800	3,800	<b>56,000</b>	<b>31.6</b>
<b>Barnet</b>	<b>326,300</b>	216,000	3,800	18,700	6,300	31,300	5,600	1,800	11,000	9,000	22,700	<b>110,300</b>	<b>33.8</b>
<b>Bexley</b>	<b>217,700</b>	188,400	2,700	10,100	3,400	5,100	400	500	2,900	1,200	3,000	<b>29,300</b>	<b>13.5</b>
<b>Brent</b>	<b>279,700</b>	114,000	27,400	23,300	10,900	55,200	12,600	1,100	18,600	3,500	13,000	<b>165,600</b>	<b>59.2</b>
<b>Bromley</b>	<b>301,900</b>	263,800	7,000	7,300	4,900	5,900	800	1,300	4,100	1,900	4,900	<b>38,100</b>	<b>12.6</b>
<b>Croydon</b>	<b>343,300</b>	199,600	35,900	24,200	14,500	29,400	11,600	2,700	13,900	1,900	9,600	<b>143,700</b>	<b>41.9</b>
<b>Ealing</b>	<b>317,600</b>	166,800	13,400	11,100	7,200	49,700	13,400	1,400	18,700	4,800	31,100	<b>150,800</b>	<b>47.5</b>
<b>Enfield</b>	<b>293,800</b>	200,600	19,600	19,600	8,900	13,500	2,600	5,300	10,100	3,200	10,500	<b>93,200</b>	<b>31.7</b>
<b>Greenwich</b>	<b>239,400</b>	156,000	8,100	32,900	7,500	11,700	3,400	1,900	6,800	4,300	6,700	<b>83,400</b>	<b>34.8</b>
<b>Harrow</b>	<b>218,700</b>	101,200	7,400	8,000	3,800	60,100	6,000	1,100	19,400	2,800	9,000	<b>117,500</b>	<b>53.7</b>
<b>Havering</b>	<b>231,100</b>	212,900	2,800	4,600	2,000	3,300	500	200	1,900	1,100	1,700	<b>18,200</b>	<b>7.9</b>
<b>Hillingdon</b>	<b>261,700</b>	180,600	5,200	9,600	4,400	32,100	6,200	2,500	11,700	2,400	7,100	<b>81,100</b>	<b>31.0</b>
<b>Hounslow</b>	<b>237,000</b>	131,800	3,100	7,500	4,000	50,500	12,300	2,600	9,700	2,300	13,200	<b>105,200</b>	<b>44.4</b>
<b>Kingston upon Thames</b>	<b>154,900</b>	119,400	1,100	2,300	1,400	7,300	2,700	600	6,900	3,200	10,000	<b>35,500</b>	<b>22.9</b>
<b>Merton</b>	<b>197,900</b>	137,800	8,100	8,000	5,000	9,000	5,300	2,300	10,900	3,000	8,400	<b>60,000</b>	<b>30.3</b>
<b>Redbridge</b>	<b>258,800</b>	129,800	12,300	12,900	5,100	44,800	24,500	8,700	13,700	2,200	4,700	<b>129,000</b>	<b>49.8</b>
<b>Richmond upon Thames</b>	<b>186,700</b>	164,200	700	1,100	2,100	5,700	800	600	4,000	1,300	6,100	<b>22,400</b>	<b>12.0</b>
<b>Sutton</b>	<b>185,700</b>	154,700	3,200	4,000	2,800	5,600	2,700	700	6,400	1,400	4,100	<b>30,900</b>	<b>16.6</b>
<b>Waltham Forest</b>	<b>229,200</b>	131,600	21,000	15,600	9,500	7,800	21,800	2,800	9,300	1,900	7,800	<b>97,600</b>	<b>42.6</b>
<b>Central Boroughs</b>	<b>611,800</b>	443,500	12,200	25,500	12,100	20,200	5,100	21,700	16,200	15,900	39,300	<b>168,300</b>	<b>27.5</b>
<b>Rest of Inner Boroughs</b>	<b>2,526,000</b>	1,534,000	177,300	239,600	96,900	82,500	50,500	140,900	61,400	42,300	100,600	<b>992,000</b>	<b>39.3</b>
<b>Inner London</b>	<b>3,137,800</b>	1,977,500	189,500	265,200	109,000	102,700	55,600	162,500	77,600	58,200	139,900	<b>1,160,300</b>	<b>37.0</b>
<b>Outer London</b>	<b>4,658,800</b>	3,090,800	189,100	241,300	110,100	434,000	139,000	39,900	182,900	54,300	177,400	<b>1,568,000</b>	<b>33.7</b>
<b>Greater London</b>	<b>7,796,600</b>	5,068,400	378,600	506,500	219,100	536,700	194,600	202,500	260,500	112,500	317,400	<b>2,728,200</b>	<b>35.0</b>

Figures may not add due to rounding

\* Central Boroughs are: Camden, City of London, Kensington and Chelsea, and Westminster

**Appendix Table 4: GLA Ethnic Group Population Projections, London Boroughs, 2016**

	Total	White	Black Caribbean	Black African	Black Other	Indian	Pakistani	Bangladeshi	Other Asian	Chinese	Other	BAME	% BAME
<b>Camden</b>	<b>218,800</b>	151,700	3,000	13,900	4,300	6,600	1,500	15,800	4,700	4,700	12,500	<b>67,100</b>	<b>30.7</b>
<b>City of London</b>	<b>10,700</b>	7,900	100	200	200	500	100	200	300	300	800	<b>2,800</b>	<b>26.2</b>
<b>Kensington and Chelsea</b>	<b>176,400</b>	135,800	3,400	6,000	3,400	4,100	1,200	1,200	4,100	5,000	12,100	<b>40,600</b>	<b>23.0</b>
<b>Westminster</b>	<b>225,000</b>	158,300	5,100	5,800	4,500	10,700	2,400	5,100	7,700	7,400	18,000	<b>66,700</b>	<b>29.6</b>
<b>Hackney</b>	<b>242,600</b>	141,900	19,600	28,900	13,400	8,600	1,800	8,000	4,700	3,400	12,400	<b>100,600</b>	<b>41.5</b>
<b>Hammersmith and Fulham</b>	<b>181,200</b>	135,000	8,100	9,400	5,900	2,400	2,100	1,500	6,000	1,800	9,000	<b>46,200</b>	<b>25.5</b>
<b>Haringey</b>	<b>247,500</b>	158,200	19,900	21,900	9,900	6,000	2,800	4,500	6,600	4,200	13,500	<b>89,400</b>	<b>36.1</b>
<b>Islington</b>	<b>211,500</b>	156,300	8,600	10,200	6,700	4,300	1,300	6,300	4,100	5,400	8,300	<b>55,200</b>	<b>26.1</b>
<b>Lambeth</b>	<b>308,600</b>	193,700	30,000	36,700	16,000	4,900	2,800	3,100	6,200	3,600	11,600	<b>114,900</b>	<b>37.2</b>
<b>Lewisham</b>	<b>282,400</b>	161,600	38,900	33,800	17,700	6,300	1,700	1,500	7,500	3,600	9,800	<b>120,800</b>	<b>42.8</b>
<b>Newham</b>	<b>292,300</b>	77,500	18,800	47,500	9,200	33,700	34,400	34,100	14,600	5,000	17,500	<b>214,800</b>	<b>73.5</b>
<b>Southwark</b>	<b>306,200</b>	188,800	19,700	46,100	13,200	6,800	1,600	4,900	5,100	7,400	12,600	<b>117,400</b>	<b>38.3</b>
<b>Tower Hamlets</b>	<b>272,700</b>	137,400	4,600	7,100	4,100	5,700	1,600	89,200	4,900	9,900	8,200	<b>135,400</b>	<b>49.6</b>
<b>Wandsworth</b>	<b>307,500</b>	240,500	10,400	10,400	7,500	8,800	5,200	1,500	7,300	3,100	12,700	<b>67,000</b>	<b>21.8</b>
<b>Barking and Dagenham</b>	<b>193,400</b>	122,300	7,400	26,700	8,100	7,200	6,900	2,400	3,500	3,900	5,000	<b>71,000</b>	<b>36.7</b>
<b>Barnet</b>	<b>353,100</b>	225,900	4,100	21,600	7,500	34,200	6,500	2,000	12,400	10,500	28,400	<b>127,200</b>	<b>36.0</b>
<b>Bexley</b>	<b>219,000</b>	185,800	3,000	12,200	4,100	5,000	400	600	3,200	1,100	3,600	<b>33,300</b>	<b>15.2</b>
<b>Brent</b>	<b>287,800</b>	114,200	27,000	24,100	11,700	58,400	13,200	1,100	19,900	3,800	14,300	<b>173,600</b>	<b>60.3</b>
<b>Bromley</b>	<b>304,400</b>	262,000	7,900	8,500	5,600	6,200	800	1,500	4,300	1,900	5,600	<b>42,400</b>	<b>13.9</b>
<b>Croydon</b>	<b>352,300</b>	191,100	39,900	27,400	16,600	32,600	13,400	3,100	15,200	1,800	11,200	<b>161,200</b>	<b>45.8</b>
<b>Ealing</b>	<b>325,200</b>	164,100	13,300	11,100	7,400	50,200	14,100	1,500	19,900	5,200	38,400	<b>161,100</b>	<b>49.5</b>
<b>Enfield</b>	<b>297,300</b>	195,700	21,300	21,000	9,900	14,200	2,800	5,900	10,900	3,500	12,100	<b>101,600</b>	<b>34.2</b>
<b>Greenwich</b>	<b>264,400</b>	163,700	9,000	41,100	8,900	13,200	4,200	2,200	8,500	5,300	8,300	<b>100,700</b>	<b>38.1</b>
<b>Harrow</b>	<b>217,100</b>	92,000	7,500	8,200	3,800	64,200	6,300	1,100	21,000	2,900	10,100	<b>125,100</b>	<b>57.6</b>
<b>Havering</b>	<b>241,300</b>	219,800	3,400	6,000	2,400	3,500	600	200	2,200	1,300	2,000	<b>21,500</b>	<b>8.9</b>
<b>Hillingdon</b>	<b>266,500</b>	175,000	5,900	11,200	5,000	35,200	7,100	2,900	13,500	2,500	8,200	<b>91,400</b>	<b>34.3</b>
<b>Hounslow</b>	<b>241,900</b>	126,200	3,200	7,800	4,300	55,600	13,300	3,300	10,300	2,400	15,600	<b>115,700</b>	<b>47.8</b>
<b>Kingston upon Thames</b>	<b>158,100</b>	118,600	1,300	2,600	1,500	8,000	3,000	700	7,500	3,600	11,400	<b>39,500</b>	<b>25.0</b>
<b>Merton</b>	<b>198,700</b>	135,200	8,400	8,300	5,500	9,200	5,500	2,600	11,700	3,200	9,300	<b>63,500</b>	<b>32.0</b>
<b>Redbridge</b>	<b>265,500</b>	122,700	13,400	13,900	5,500	48,900	28,100	10,600	15,100	2,200	5,100	<b>142,800</b>	<b>53.8</b>
<b>Richmond upon Thames</b>	<b>189,800</b>	165,300	700	1,200	2,400	6,100	800	600	4,300	1,300	7,000	<b>24,500</b>	<b>12.9</b>
<b>Sutton</b>	<b>185,600</b>	151,400	3,600	4,500	3,100	6,000	3,200	800	7,100	1,400	4,500	<b>34,200</b>	<b>18.4</b>
<b>Waltham Forest</b>	<b>234,500</b>	129,900	22,200	16,400	10,100	8,000	23,600	3,100	10,300	2,100	8,800	<b>104,600</b>	<b>44.6</b>
<b>Central Boroughs</b>	<b>630,900</b>	453,700	11,700	25,900	12,400	21,900	5,300	22,400	16,800	17,400	43,400	<b>177,200</b>	<b>28.1</b>
<b>Rest of Inner Boroughs</b>	<b>2,652,700</b>	1,591,000	178,600	252,100	103,800	87,400	55,300	154,500	67,100	47,400	115,600	<b>1,061,700</b>	<b>40.0</b>
<b>Inner London</b>	<b>3,283,600</b>	2,044,700	190,200	278,000	116,200	109,400	60,600	176,900	83,900	64,800	159,000	<b>1,238,900</b>	<b>37.7</b>
<b>Outer London</b>	<b>4,795,900</b>	3,060,900	202,400	273,700	123,400	466,000	153,700	46,100	200,800	59,900	208,900	<b>1,735,000</b>	<b>36.2</b>
<b>Greater London</b>	<b>8,079,500</b>	5,105,600	392,600	551,800	239,600	575,300	214,300	223,000	284,700	124,700	367,900	<b>2,973,900</b>	<b>36.8</b>

Figures may not add due to rounding

\* Central Boroughs are: Camden, City of London, Kensington and Chelsea, and Westminster

**Appendix Table 5: GLA Ethnic Group Population Projections, London Boroughs, 2021**

	Total	White	Black Caribbean	Black African	Black Other	Indian	Pakistani	Bangladeshi	Other Asian	Chinese	Other	BAME	% BAME
<b>Camden</b>	<b>225,300</b>	155,500	3,000	14,500	4,400	7,000	1,600	16,200	4,900	4,900	13,300	<b>69,800</b>	<b>31.0</b>
<b>City of London</b>	<b>11,600</b>	8,500	200	300	200	500	100	200	400	400	900	<b>3,100</b>	<b>27.1</b>
<b>Kensington and Chelsea</b>	<b>181,000</b>	139,200	3,300	6,000	3,500	4,300	1,300	1,200	4,100	5,400	12,800	<b>41,900</b>	<b>23.1</b>
<b>Westminster</b>	<b>229,800</b>	161,000	4,900	5,700	4,600	11,400	2,500	4,900	7,900	7,800	19,200	<b>68,800</b>	<b>29.9</b>
<b>Hackney</b>	<b>252,900</b>	147,800	19,400	29,900	14,300	8,900	1,800	8,400	5,000	3,600	13,800	<b>105,100</b>	<b>41.5</b>
<b>Hammersmith and Fulham</b>	<b>183,900</b>	136,200	7,900	9,600	6,100	2,400	2,200	1,600	6,400	1,900	9,500	<b>47,700</b>	<b>26.0</b>
<b>Haringey</b>	<b>256,400</b>	163,400	19,900	22,500	10,500	6,100	3,000	4,800	6,900	4,500	14,900	<b>93,000</b>	<b>36.3</b>
<b>Islington</b>	<b>217,400</b>	160,400	8,700	10,200	6,900	4,500	1,300	6,800	4,200	5,800	8,700	<b>57,000</b>	<b>26.2</b>
<b>Lambeth</b>	<b>317,700</b>	200,200	29,500	37,700	16,500	4,900	2,800	3,300	6,500	3,800	12,500	<b>117,500</b>	<b>37.0</b>
<b>Lewisham</b>	<b>292,800</b>	164,300	41,100	35,900	19,300	6,600	1,800	1,500	7,900	3,700	10,600	<b>128,500</b>	<b>43.9</b>
<b>Newham</b>	<b>315,800</b>	81,100	19,600	51,900	10,000	35,800	37,900	37,600	16,200	5,700	20,000	<b>234,600</b>	<b>74.3</b>
<b>Southwark</b>	<b>325,700</b>	201,600	19,900	47,900	14,100	7,500	1,700	5,100	5,600	8,100	14,100	<b>124,100</b>	<b>38.1</b>
<b>Tower Hamlets</b>	<b>296,400</b>	149,400	4,700	7,500	4,300	6,300	1,700	95,900	5,500	11,700	9,300	<b>147,000</b>	<b>49.6</b>
<b>Wandsworth</b>	<b>316,700</b>	247,900	9,900	10,500	7,700	9,200	5,100	1,600	7,500	3,300	14,000	<b>68,800</b>	<b>21.7</b>
<b>Barking and Dagenham</b>	<b>208,900</b>	125,100	8,600	31,600	9,800	8,200	8,000	2,900	4,000	4,800	5,900	<b>83,800</b>	<b>40.1</b>
<b>Barnet</b>	<b>373,400</b>	233,200	4,200	23,600	8,300	36,700	7,200	2,200	13,500	11,700	32,900	<b>140,200</b>	<b>37.5</b>
<b>Bexley</b>	<b>221,100</b>	184,800	3,300	13,800	4,800	5,000	400	600	3,400	1,100	4,000	<b>36,300</b>	<b>16.4</b>
<b>Brent</b>	<b>295,400</b>	115,200	26,600	24,800	12,400	61,400	13,800	1,100	20,900	4,000	15,300	<b>180,200</b>	<b>61.0</b>
<b>Bromley</b>	<b>307,400</b>	261,600	8,700	9,500	6,200	6,500	800	1,700	4,500	1,900	6,100	<b>45,800</b>	<b>14.9</b>
<b>Croydon</b>	<b>361,300</b>	185,600	43,400	29,800	18,300	35,300	14,900	3,400	16,200	1,800	12,500	<b>175,700</b>	<b>48.6</b>
<b>Ealing</b>	<b>332,600</b>	163,000	13,200	11,100	7,500	50,800	14,600	1,600	20,800	5,600	44,400	<b>169,600</b>	<b>51.0</b>
<b>Enfield</b>	<b>301,000</b>	193,000	22,800	22,000	10,700	14,700	2,900	6,400	11,400	3,800	13,300	<b>108,000</b>	<b>35.9</b>
<b>Greenwich</b>	<b>288,400</b>	172,500	9,800	48,200	10,200	14,700	4,900	2,400	9,900	6,100	9,600	<b>115,900</b>	<b>40.2</b>
<b>Harrow</b>	<b>215,100</b>	85,200	7,500	8,300	3,800	67,400	6,400	1,100	21,900	2,800	10,700	<b>129,900</b>	<b>60.4</b>
<b>Havering</b>	<b>251,600</b>	227,300	3,900	7,100	2,700	3,800	600	200	2,400	1,400	2,200	<b>24,300</b>	<b>9.7</b>
<b>Hillingdon</b>	<b>271,300</b>	171,600	6,400	12,300	5,600	37,900	7,700	3,300	14,900	2,600	9,000	<b>99,700</b>	<b>36.7</b>
<b>Hounslow</b>	<b>246,300</b>	122,400	3,200	8,000	4,500	59,700	14,100	3,900	10,600	2,400	17,400	<b>123,800</b>	<b>50.3</b>
<b>Kingston upon Thames</b>	<b>161,000</b>	118,500	1,300	2,700	1,500	8,500	3,200	800	8,000	4,000	12,400	<b>42,400</b>	<b>26.4</b>
<b>Merton</b>	<b>199,400</b>	133,400	8,700	8,500	5,800	9,300	5,600	2,800	12,100	3,300	9,900	<b>65,900</b>	<b>33.1</b>
<b>Redbridge</b>	<b>272,200</b>	118,200	14,300	14,500	5,800	52,400	31,000	12,100	16,300	2,300	5,400	<b>154,000</b>	<b>56.6</b>
<b>Richmond upon Thames</b>	<b>192,000</b>	166,100	700	1,300	2,600	6,500	900	600	4,600	1,300	7,600	<b>25,900</b>	<b>13.5</b>
<b>Sutton</b>	<b>185,800</b>	149,100	3,900	4,800	3,400	6,300	3,600	800	7,700	1,400	4,700	<b>36,700</b>	<b>19.8</b>
<b>Waltham Forest</b>	<b>239,400</b>	129,500	23,100	16,900	10,600	8,100	25,100	3,200	11,100	2,300	9,500	<b>109,900</b>	<b>45.9</b>
<b>Central Boroughs</b>	<b>647,800</b>	464,100	11,400	26,400	12,700	23,200	5,400	22,500	17,300	18,500	46,200	<b>183,600</b>	<b>28.3</b>
<b>Rest of Inner Boroughs</b>	<b>2,775,500</b>	1,652,200	180,600	263,600	109,700	92,200	59,400	166,500	71,800	52,100	127,500	<b>1,123,400</b>	<b>40.5</b>
<b>Inner London</b>	<b>3,423,300</b>	2,116,300	192,000	290,100	122,300	115,400	64,800	189,000	89,100	70,600	173,600	<b>1,307,000</b>	<b>38.2</b>
<b>Outer London</b>	<b>4,923,500</b>	3,055,500	213,500	298,500	134,400	493,200	165,600	51,300	214,300	64,700	232,600	<b>1,868,100</b>	<b>37.9</b>
<b>Greater London</b>	<b>8,346,800</b>	5,171,800	405,500	588,600	256,700	608,600	230,400	240,300	303,400	135,200	406,300	<b>3,175,000</b>	<b>38.0</b>

Figures may not add due to rounding

\* Central Boroughs are: Camden, City of London, Kensington and Chelsea, and Westminster

**Appendix Table 6: GLA Ethnic Group Population Projections, London Boroughs, 2026**

	Total	White	Black Caribbean	Black African	Black Other	Indian	Pakistani	Bangladeshi	Other Asian	Chinese	Other	BAME	% BAME
<b>Camden</b>	<b>232,100</b>	160,100	3,000	15,000	4,500	7,300	1,600	16,400	5,100	5,100	13,900	<b>72,000</b>	<b>31.0</b>
<b>City of London</b>	<b>12,400</b>	9,000	200	300	200	600	100	200	400	400	1,000	<b>3,400</b>	<b>27.6</b>
<b>Kensington and Chelsea</b>	<b>185,100</b>	142,200	3,200	6,000	3,500	4,400	1,300	1,200	4,200	5,700	13,300	<b>42,800</b>	<b>23.2</b>
<b>Westminster</b>	<b>232,900</b>	162,700	4,900	5,700	4,600	11,800	2,500	4,700	8,000	8,100	19,900	<b>70,200</b>	<b>30.1</b>
<b>Hackney</b>	<b>263,200</b>	154,100	19,400	30,900	15,000	9,300	1,800	8,800	5,300	3,900	14,900	<b>109,100</b>	<b>41.5</b>
<b>Hammersmith and Fulham</b>	<b>186,500</b>	137,700	7,800	9,800	6,200	2,400	2,300	1,600	6,700	2,000	9,900	<b>48,800</b>	<b>26.2</b>
<b>Haringey</b>	<b>265,500</b>	169,300	19,900	23,100	10,900	6,200	3,100	5,000	7,100	4,800	15,900	<b>96,200</b>	<b>36.2</b>
<b>Islington</b>	<b>223,300</b>	164,700	8,800	10,200	7,100	4,600	1,400	7,200	4,300	6,100	8,900	<b>58,600</b>	<b>26.3</b>
<b>Lambeth</b>	<b>326,000</b>	206,200	29,300	38,600	16,900	5,000	2,900	3,400	6,800	3,900	13,100	<b>119,800</b>	<b>36.7</b>
<b>Lewisham</b>	<b>303,400</b>	168,200	43,100	37,600	20,700	6,900	1,900	1,600	8,300	3,800	11,200	<b>135,300</b>	<b>44.6</b>
<b>Newham</b>	<b>339,700</b>	86,300	20,500	56,200	10,700	37,900	41,200	40,800	17,600	6,400	22,100	<b>253,400</b>	<b>74.6</b>
<b>Southwark</b>	<b>345,500</b>	214,700	20,300	49,900	15,000	8,200	1,800	5,400	6,100	8,800	15,300	<b>130,800</b>	<b>37.8</b>
<b>Tower Hamlets</b>	<b>319,700</b>	161,400	4,800	7,900	4,600	7,000	1,900	102,400	6,000	13,400	10,300	<b>158,200</b>	<b>49.5</b>
<b>Wandsworth</b>	<b>325,000</b>	254,500	9,700	10,700	7,800	9,400	5,000	1,700	7,700	3,400	15,000	<b>70,500</b>	<b>21.7</b>
<b>Barking and Dagenham</b>	<b>223,600</b>	129,000	9,600	35,600	11,300	9,100	9,000	3,400	4,400	5,700	6,600	<b>94,600</b>	<b>42.3</b>
<b>Barnet</b>	<b>394,200</b>	242,500	4,400	25,300	9,200	38,900	7,900	2,400	14,400	12,800	36,600	<b>151,800</b>	<b>38.5</b>
<b>Bexley</b>	<b>223,500</b>	184,800	3,500	15,000	5,300	5,000	400	600	3,600	1,000	4,300	<b>38,700</b>	<b>17.3</b>
<b>Brent</b>	<b>302,700</b>	116,900	26,300	25,400	12,900	63,900	14,300	1,100	21,800	4,200	15,900	<b>185,800</b>	<b>61.4</b>
<b>Bromley</b>	<b>311,200</b>	262,800	9,300	10,200	6,600	6,700	800	1,800	4,600	1,900	6,400	<b>48,500</b>	<b>15.6</b>
<b>Croydon</b>	<b>370,400</b>	182,800	46,500	31,500	19,800	37,500	16,200	3,700	17,000	1,800	13,500	<b>187,600</b>	<b>50.6</b>
<b>Ealing</b>	<b>340,000</b>	163,500	13,100	11,200	7,700	51,400	15,000	1,700	21,500	5,900	49,000	<b>176,500</b>	<b>51.9</b>
<b>Enfield</b>	<b>304,600</b>	191,800	24,000	22,600	11,300	15,200	3,000	6,800	11,800	4,000	14,100	<b>112,800</b>	<b>37.0</b>
<b>Greenwich</b>	<b>311,500</b>	182,300	10,600	54,300	11,400	16,100	5,500	2,700	11,100	6,900	10,700	<b>129,300</b>	<b>41.5</b>
<b>Harrow</b>	<b>212,700</b>	80,300	7,500	8,200	3,700	69,500	6,300	1,100	22,400	2,800	11,000	<b>132,400</b>	<b>62.2</b>
<b>Havering</b>	<b>262,000</b>	235,400	4,300	8,100	3,000	4,000	600	300	2,600	1,600	2,300	<b>26,600</b>	<b>10.2</b>
<b>Hillingdon</b>	<b>276,100</b>	170,000	6,900	13,100	6,000	40,100	8,200	3,600	16,100	2,700	9,500	<b>106,000</b>	<b>38.4</b>
<b>Hounslow</b>	<b>250,400</b>	120,500	3,300	8,100	4,600	63,000	14,600	4,500	10,800	2,500	18,500	<b>129,900</b>	<b>51.9</b>
<b>Kingston upon Thames</b>	<b>163,500</b>	119,000	1,400	2,800	1,600	8,900	3,300	800	8,300	4,300	13,000	<b>44,500</b>	<b>27.2</b>
<b>Merton</b>	<b>199,900</b>	132,500	8,900	8,600	6,100	9,400	5,600	2,900	12,400	3,400	10,100	<b>67,400</b>	<b>33.7</b>
<b>Redbridge</b>	<b>278,700</b>	115,600	15,000	14,900	6,000	55,300	33,400	13,400	17,200	2,300	5,600	<b>163,100</b>	<b>58.5</b>
<b>Richmond upon Thames</b>	<b>193,900</b>	167,000	700	1,300	2,700	6,700	900	600	4,800	1,300	7,900	<b>26,900</b>	<b>13.9</b>
<b>Sutton</b>	<b>186,200</b>	147,600	4,100	5,100	3,600	6,500	4,000	900	8,200	1,400	4,800	<b>38,600</b>	<b>20.7</b>
<b>Waltham Forest</b>	<b>244,200</b>	130,100	23,800	17,200	11,100	8,200	26,300	3,400	11,700	2,400	10,000	<b>114,100</b>	<b>46.7</b>
<b>Central Boroughs</b>	<b>662,500</b>	474,000	11,300	27,000	12,900	24,200	5,500	22,500	17,700	19,300	48,100	<b>188,400</b>	<b>28.4</b>
<b>Rest of Inner Boroughs</b>	<b>2,897,800</b>	1,717,200	183,700	275,000	115,000	96,900	63,200	177,800	75,900	56,400	136,600	<b>1,180,600</b>	<b>40.7</b>
<b>Inner London</b>	<b>3,560,300</b>	2,191,200	195,000	302,000	127,900	121,100	68,700	200,400	93,600	75,700	184,800	<b>1,369,100</b>	<b>38.5</b>
<b>Outer London</b>	<b>5,049,300</b>	3,074,400	223,100	318,400	143,700	515,600	175,400	55,600	224,400	68,800	250,000	<b>1,974,900</b>	<b>39.1</b>
<b>Greater London</b>	<b>8,609,600</b>	5,265,600	418,100	620,400	271,600	636,700	244,200	255,900	318,000	144,500	434,700	<b>3,344,000</b>	<b>38.8</b>

Figures may not add due to rounding

\* Central Boroughs are: Camden, City of London, Kensington and Chelsea, and Westminster

**Appendix Table 7: GLA Ethnic Group Population Projections, London Boroughs, 2031**

	Total	White	Black Caribbean	Black African	Black Other	Indian	Pakistani	Bangladeshi	Other Asian	Chinese	Other	BAME	% BAME
<b>Camden</b>	<b>238,500</b>	164,500	3,000	15,400	4,600	7,600	1,700	16,700	5,200	5,400	14,300	<b>74,000</b>	<b>31.0</b>
<b>City of London</b>	<b>13,200</b>	9,500	200	300	200	700	100	200	400	500	1,100	<b>3,700</b>	<b>27.9</b>
<b>Kensington and Chelsea</b>	<b>188,700</b>	145,100	3,200	6,100	3,500	4,500	1,300	1,200	4,300	5,900	13,600	<b>43,600</b>	<b>23.1</b>
<b>Westminster</b>	<b>235,900</b>	164,500	4,900	5,700	4,700	12,200	2,500	4,500	8,200	8,200	20,500	<b>71,300</b>	<b>30.2</b>
<b>Hackney</b>	<b>273,500</b>	160,400	19,500	31,900	15,700	9,600	1,800	9,200	5,500	4,100	15,800	<b>113,200</b>	<b>41.4</b>
<b>Hammersmith and Fulham</b>	<b>189,800</b>	140,200	7,800	10,000	6,300	2,400	2,300	1,700	6,900	2,100	10,200	<b>49,600</b>	<b>26.1</b>
<b>Haringey</b>	<b>273,800</b>	174,900	20,100	23,700	11,300	6,300	3,200	5,300	7,300	5,100	16,600	<b>98,900</b>	<b>36.1</b>
<b>Islington</b>	<b>230,700</b>	170,300	9,000	10,400	7,300	4,800	1,400	7,500	4,400	6,400	9,200	<b>60,400</b>	<b>26.2</b>
<b>Lambeth</b>	<b>334,000</b>	212,000	29,300	39,400	17,200	5,000	2,900	3,500	7,000	4,000	13,500	<b>122,000</b>	<b>36.5</b>
<b>Lewisham</b>	<b>313,600</b>	172,500	44,900	39,100	22,000	7,200	2,000	1,600	8,600	3,900	11,700	<b>141,100</b>	<b>45.0</b>
<b>Newham</b>	<b>363,200</b>	91,900	21,400	60,100	11,400	40,100	44,400	44,200	18,900	7,000	23,900	<b>271,300</b>	<b>74.7</b>
<b>Southwark</b>	<b>365,300</b>	227,800	20,800	51,900	15,900	8,800	1,900	5,700	6,500	9,500	16,400	<b>137,500</b>	<b>37.6</b>
<b>Tower Hamlets</b>	<b>342,500</b>	173,100	5,000	8,400	4,900	7,600	2,000	109,100	6,500	15,000	11,200	<b>169,400</b>	<b>49.5</b>
<b>Wandsworth</b>	<b>333,200</b>	261,000	9,600	10,900	8,000	9,800	5,100	1,700	7,900	3,500	15,800	<b>72,300</b>	<b>21.7</b>
<b>Barking and Dagenham</b>	<b>237,600</b>	133,500	10,500	39,000	12,700	9,800	9,900	3,800	4,800	6,400	7,200	<b>104,000</b>	<b>43.8</b>
<b>Barnet</b>	<b>414,500</b>	252,400	4,500	26,800	9,900	41,000	8,500	2,500	15,300	13,800	39,800	<b>162,100</b>	<b>39.1</b>
<b>Bexley</b>	<b>225,800</b>	185,300	3,600	15,800	5,800	5,000	500	600	3,700	1,000	4,500	<b>40,500</b>	<b>17.9</b>
<b>Brent</b>	<b>310,100</b>	119,200	26,200	26,000	13,300	66,200	14,700	1,200	22,500	4,400	16,400	<b>190,900</b>	<b>61.6</b>
<b>Bromley</b>	<b>315,400</b>	264,700	9,900	10,700	7,000	6,900	800	2,000	4,700	1,900	6,700	<b>50,600</b>	<b>16.1</b>
<b>Croydon</b>	<b>379,400</b>	181,900	49,100	32,900	21,000	39,400	17,400	4,000	17,500	1,800	14,200	<b>197,500</b>	<b>52.1</b>
<b>Ealing</b>	<b>347,400</b>	165,200	13,100	11,400	7,800	52,000	15,400	1,800	22,100	6,100	52,600	<b>182,200</b>	<b>52.4</b>
<b>Enfield</b>	<b>308,300</b>	191,700	25,000	23,100	11,800	15,500	3,100	7,200	12,100	4,200	14,600	<b>116,600</b>	<b>37.8</b>
<b>Greenwich</b>	<b>334,100</b>	192,700	11,400	59,700	12,400	17,400	6,100	2,900	12,100	7,600	11,700	<b>141,400</b>	<b>42.3</b>
<b>Harrow</b>	<b>211,800</b>	77,500	7,500	8,100	3,600	71,200	6,300	1,100	22,600	2,800	11,100	<b>134,300</b>	<b>63.4</b>
<b>Havering</b>	<b>272,200</b>	243,600	4,600	8,800	3,200	4,200	600	300	2,700	1,700	2,500	<b>28,600</b>	<b>10.5</b>
<b>Hillingdon</b>	<b>280,100</b>	169,200	7,200	13,700	6,300	41,900	8,600	3,800	16,900	2,700	9,800	<b>111,000</b>	<b>39.6</b>
<b>Hounslow</b>	<b>254,000</b>	119,500	3,300	8,200	4,700	65,500	15,000	5,000	11,000	2,500	19,300	<b>134,400</b>	<b>52.9</b>
<b>Kingston upon Thames</b>	<b>165,800</b>	119,900	1,400	2,900	1,600	9,300	3,400	900	8,500	4,600	13,500	<b>45,900</b>	<b>27.7</b>
<b>Merton</b>	<b>200,700</b>	132,300	9,100	8,600	6,300	9,500	5,600	3,000	12,600	3,500	10,200	<b>68,400</b>	<b>34.1</b>
<b>Redbridge</b>	<b>285,000</b>	114,500	15,700	15,200	6,200	57,800	35,500	14,400	17,800	2,300	5,600	<b>170,500</b>	<b>59.8</b>
<b>Richmond upon Thames</b>	<b>195,300</b>	167,800	700	1,300	2,800	6,900	900	600	4,900	1,300	8,200	<b>27,500</b>	<b>14.1</b>
<b>Sutton</b>	<b>186,300</b>	146,400	4,300	5,300	3,800	6,700	4,200	900	8,500	1,400	4,900	<b>39,900</b>	<b>21.4</b>
<b>Waltham Forest</b>	<b>249,000</b>	131,400	24,600	17,500	11,400	8,400	27,400	3,500	12,200	2,500	10,300	<b>117,700</b>	<b>47.2</b>
<b>Central Boroughs</b>	<b>676,200</b>	483,600	11,300	27,500	13,100	25,000	5,600	22,600	18,100	19,900	49,500	<b>192,600</b>	<b>28.5</b>
<b>Rest of Inner Boroughs</b>	<b>3,019,700</b>	1,784,000	187,500	285,800	119,900	101,600	67,000	189,500	79,600	60,500	144,200	<b>1,235,700</b>	<b>40.9</b>
<b>Inner London</b>	<b>3,695,900</b>	2,267,600	198,800	313,300	133,000	126,600	72,600	212,100	97,700	80,400	193,700	<b>1,428,300</b>	<b>38.6</b>
<b>Outer London</b>	<b>5,172,800</b>	3,108,800	231,700	335,000	151,500	534,600	183,900	59,300	232,400	72,400	263,000	<b>2,064,000</b>	<b>39.9</b>
<b>Greater London</b>	<b>8,868,700</b>	5,376,400	430,600	648,300	284,400	661,300	256,500	271,500	330,100	152,900	456,700	<b>3,492,300</b>	<b>39.4</b>

Figures may not add due to rounding

\* Central Boroughs are: Camden, City of London, Kensington and Chelsea, and Westminster

## **Availability of Data**

Data from the 2008 Round London Plan ethnic group population projections are freely available on the London Data Store (<http://data.london.gov.uk/>). The data are also available on the GLA Demography Extranet to those who have access.

For further information please contact the team at: [demography@london.gov.uk](mailto:demography@london.gov.uk)

## **GLA 2009 Round Projections**

The next round of GLA demographic projections, the 2009 Round, will incorporate more up-to-date information on borough level births, deaths and migration as well as the long-term assumptions on fertility and mortality built into the ONS 2008-based projections for England that were published in October 2009 (see *DMAG Update 14-2009*). These will be available in April 2009.