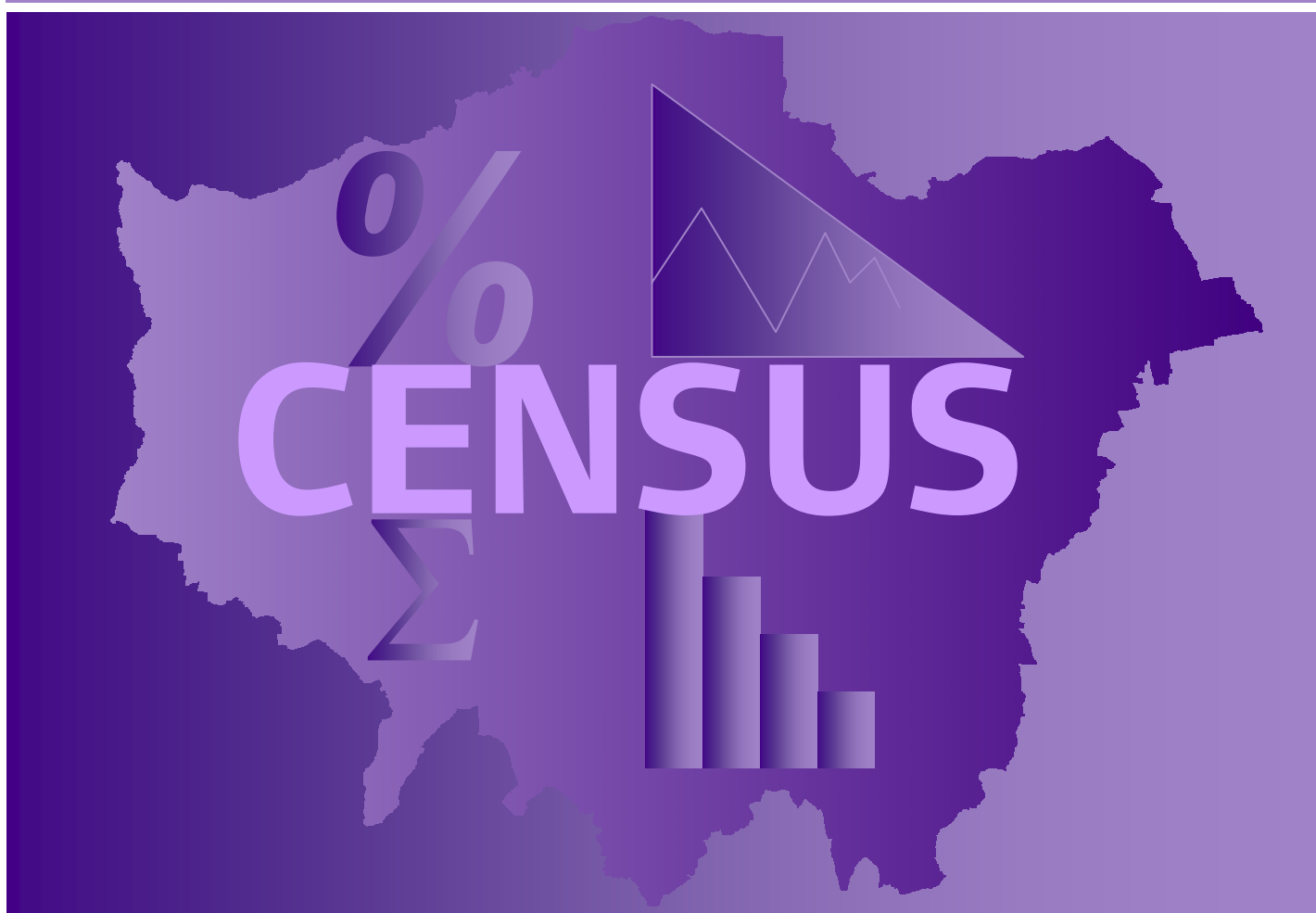


Data Management and Analysis Group

Census Information Note CIN 2010-1



DMAG Briefing 2010-02

March 2010

Census Information Note 2010-1

For more information please contact:

Eileen Howes
Data Management and Analysis Group
Greater London Authority
City Hall
The Queen's Walk
London SE1 2AA

Tel: 020 7983 4657
e-mail: eileen.howes@london.gov.uk

Copyright © Greater London Authority

Any Census data produced in this briefing has been reproduced with the permission of the Controller of Her Majesty's Stationery Office and the Queen's Printer for Scotland and is © Crown Copyright. An acknowledgement of the source is given at the end of each table.

All maps are © Crown Copyright. All rights reserved.
(Greater London Authority) (LA100032379) (2010)

ISSN 1479-7879

GLA News

The new Assistant Director of Intelligence, Andrew Collinge, started work at the GLA on 11th January 2010. He is leading the work of the Intelligence Unit. The Intelligence Unit comprises DMAG, Information Services, GLA Economics and Public Opinion and Consultation.

2011 Census Output Consultation

The consultation on output from the 2011 Census was launched on 14th December and will continue until 26th March. This is being run by Joe Traynor from ONS. The starting point for this consultation is the 2001 Census standard datasets. The Census Team at the GLA will be looking in detail at the proposed table layouts and will liaise with other GLA colleagues, boroughs and others before submitting comments. Another part of the exercise will be to propose tables based on variables produced from the new questions on language, national identity, passports held and any other new information. The consultation will be the subject of a presentation at the Census Users' Group meeting on 16th March at City Hall. The GLA and borough responses will also be discussed at that meeting.

We have looked at some of the immediate comments we might make and these include areas where we had to commission tables from the 2001 Census, such as to reflect working age in the economic activity tables, extend the occupancy rating, if it is still included, to -2 and add a measure of persons per room into the census area statistics. A further issue to be raised by the GLA is that of the bedroom standard. This is a generally accepted measure of overcrowding which is normally produced when a question on bedrooms is included in nation surveys such as the English Housing Survey. As this is the first census where a question on number of bedrooms will be asked, we think that the output should include the bedroom standard instead of occupancy rating. This would harmonise the output with other government surveys and provide us with much more useful statistics than the occupancy rating measure. We also support the persons per room measure because it allows an invaluable long time series to be produced.

We support the development of workplace zones and have been involved in the Workplace Zones User Group. Detailed work on defining the zones is the next step in this project and London is represented in this work by TfL and a number of borough representatives.

Other suggestions for tabulations we have seen from outside London include more tables by country of birth and year of arrival, a theme table along the lines of T13, but with broad regions of the world instead of ethnic groups, more information on the workforce aged 16-64 in a theme table and an equalities theme table for monitoring purposes.

Further work will be undertaken on this before the end of March and copies of our proposed response will be circulated.

2011 Census Geography Consultation

A final consultation on 2011 Census Geography started 14th December 2009. The closing date for this is the same as that for the output consultation. We had thought that we were winning

the battle for two exact fit geographies, the statistical geography (OAs and LSOAs) as well as administrative geography (for London this is wards). This consultation, despite the assurances we were given at the London Roadshows in 2009, does NOT specifically ask us what geography we want. It repeats the question on whether we want upper layer SOAs which was rejected after the last consultation in 2007. It seems that, in our opinion, we did not give the right answer the first time so ONS are asking it again.

The GLA response will stress our need for data at ward level as standard (otherwise we may have to wait a long time for it, maybe even years) and our disappointment that this consultation, like the last one, appears to us to be focussed on what ONS want to hear and not really on what users want.

Workplace Zones User Group

The meeting planned for 9th March was cancelled because Ian Coady from ONS has broken his leg. The principle appears to have been accepted and the current work is on defining zones based on 2001 data.

2011 Census Recruitment

The recruitment of address checkers which was recently undertaken by Capita appeared to be a little bizarre in that most of the jobs in east London and some other parts of London were advertised as in the East of England or other Regions and not in London. After we contacted ONS about this much of it was moved back into London but most of Barking and Dagenham and Havering remained in the East of England. The explanation appears to be postcodes, as most of the areas affected had non-London postcodes (like Essex and Kingston).

Recruitment is now under way for area managers. As the number of these is smaller and the geography they cover is much larger there is not quite so much scope for getting it wrong. For London area managers will cover a borough or two and the website looks to have the geography of London right this time.

London Regional Committee

Eileen Howes and John Hollis gave evidence alongside London Councils about the preparations for the 2011 Census and engagement with ONS during the planning and consultation phase. There was most concern from all sides about the financial implications of getting the population wrong. The previous session included the Mayor of Newham plus Michelle von Ahn, the Leaders of Southwark and Westminster with supporting staff including Damian Highwood from Westminster. There had been an earlier session where academics and others had been asked to give evidence and all these followed on from the call for written responses.

Further hearings were then held for ONS and Tessa Jowell to respond. Details of all the hearings can be seen at <http://www.publications.parliament.uk/pa/cm/cmlonreg.htm>.

London Census Forum

The London Census Forum has been set up on the Communities of Practice website. We have had some discussion about the purpose of this and from our point of view the main purpose is for members of the Census Consortium to discuss issues with each other if they want to. We will obviously participate but it will not be the only place where things are discussed. We are likely to raise issues where we are lobbying ONS or negotiating with them about what we want and therefore feel that this is not appropriate for ONS and others not involved in the consortium to become members. We would encourage you all to apply to join not only the London Census Forum but also the general ONS forum on 2011 Census issues. That is the place to ask questions directly of ONS.

London Census Consortium

Plans to put forward a proposal for a 2011 Census Consortium are being progressed. The timetable should follow with either papers to or a mention in the Chief Executive's paper to:

1. London Congress - we hope that the proposed new consortium will be mentioned in the GLA Chief Executive's paper, June 2010
2. A paper to London Councils Chief Executives' Committee
3. A paper to London Councils Leaders' Committee
4. An Information Scheme sent to individual boroughs for their agreement. These are between the GLA and boroughs. When we get 22 signed agreements to the Information Scheme (two-thirds) it becomes legally binding on the GLA and all 33 boroughs.
5. Agreements between GLA and functional bodies will be discussed separately.

2001 Census data

Commissioned tables

A large number of commissioned tables have been produced and are all freely available on request from ONS. The GLA holds copies of all these tables. Any that contain ward or district level information for London or England and Wales are still being converted into SASPAC system files and made available to all SASPAC users on the website SASPAC.org.uk.

Alternatively they are available from any member of the Census Team. More tables will be converted into SASPAC system files as and when we have the time to process them and more tables are being commissioned. These will be circulated when we get them.

SASPAC

Release of SASPAC v9.25

After a period of internal testing, the SASPAC team are pleased to announce the release of v9.25: the first version of the software that queries and retrieves data 'live' and online (through Web Services). This latest version allows users to interrogate datasets available from the Neighbourhood Statistics website (NeSS) and represents a significant first step towards the development of a 2011 Census application.

The new 'Web Services Wizard' is launched from SASPAC's 'File|Run...' menu and allows users

to search and select data available from the NeSS datastore via a simple wizard interface of 4 tabs.

Explore Datasets: NeSS - road accident - variables are selected for a specific time period:

select required dataset and topic from the drop-down lists

choose single/multiple dates

tick to select variables of interest

Variable description	Description	Units
<input checked="" type="checkbox"/> [Select/Deselect All]		
<input checked="" type="checkbox"/> Road Accident Data, All Car Occupants Killed or Seriously Injured	Count	Persons
<input checked="" type="checkbox"/> Road Accident Data, All those using Two Wheeled Motor Vehicles Killed or Seriously Injured	Count	Persons
<input checked="" type="checkbox"/> Road Accident Data, All Pedal Cyclists Killed or Seriously Injured	Count	Persons
<input checked="" type="checkbox"/> Road Accident Data, All Pedestrians Killed or Seriously Injured	Count	Persons
<input checked="" type="checkbox"/> Road Accident Data, All Child Casualties	Count	Persons
<input checked="" type="checkbox"/> Road Accident Data, All Elderly Pedestrian Casualties	Count	Persons
<input checked="" type="checkbox"/> Road Accident Data, All Elderly Casualties	Count	Persons
<input checked="" type="checkbox"/> Road Accident Data, All Elderly Pedestrian Casualties	Count	Persons

Explore Geography: areas of interest may be searched or browsed using a specific hierarchy/geographical unit and text string (e.g. "SE1 2AA" or "Southwark"):

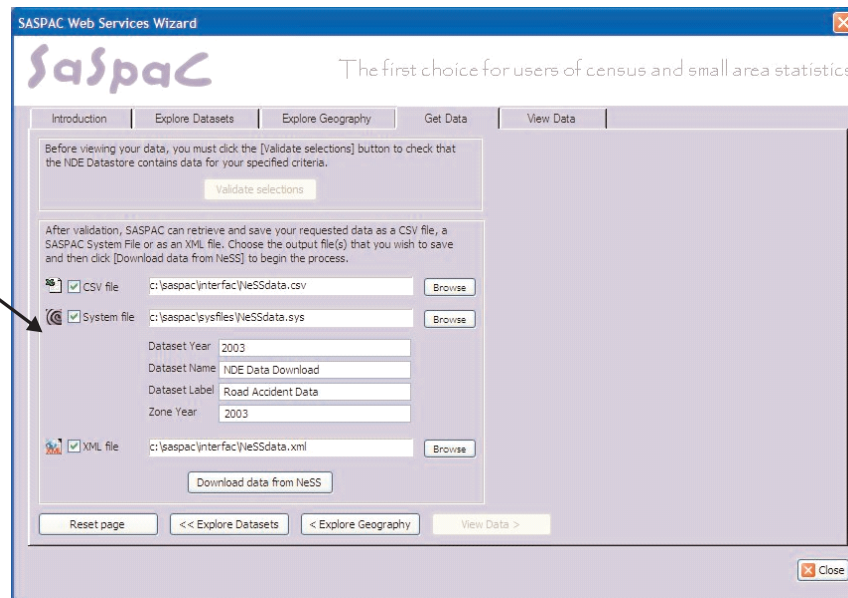
browse or search for areas of interest

select a hierarchy or geographical unit

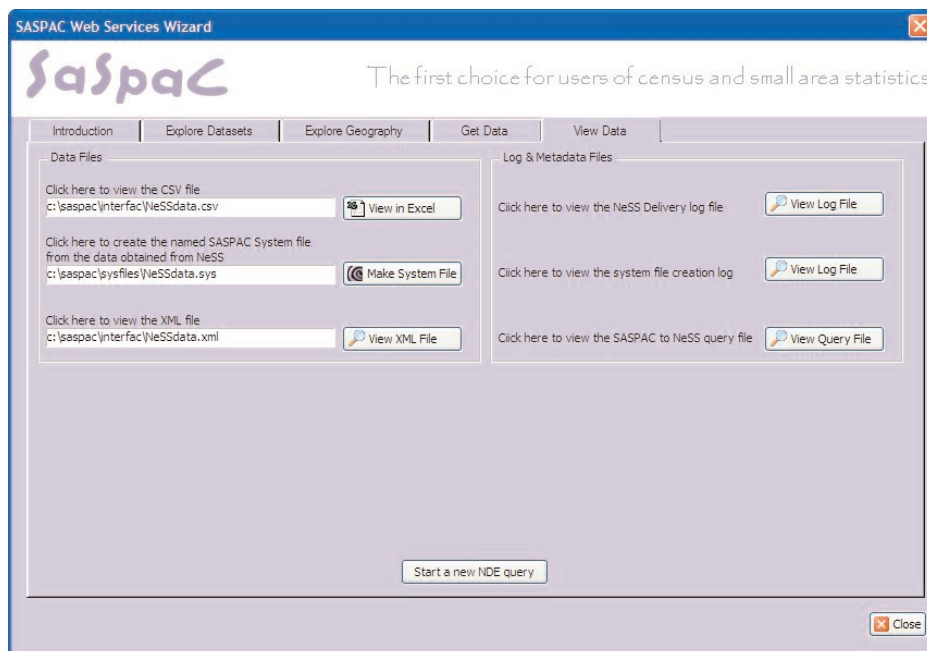
explore & select zones required

Get Data: data can be downloaded in a CSV and XML format, or stored as a new SASPAC System file (.SYS) for use within the existing application:

tick boxes save data in a CSV, XML and/or SYS file format.



View Data: the final window of the wizard allows the user to view the CSV/XML files and/or build the new System file:



As v9.25 represents a 'proof of concept' development we will only be distributing the software to users who request it from the helpdesk. So please do get in touch for your copy. We are very keen to hear users' feedback relating to this new development and welcome any comments or thoughts you may have (likes/dislikes) and what you would like to see in future developments.

New Website is coming...

Following comments from last year's user survey, SASPAC is currently upgrading its website www.saspac.org. The new site is currently under development but for those interested in a sneak preview visit: <http://saspac.wordpress.com/>. The new site will still include all the content (data, UGNs, training materials, table layouts...etc) available from the existing site but the improved layout and searching facility should make this easier to navigate. In addition to content, the new site includes: a blog facility for SASPAC/Census news, user comment functionality and the ability to subscribe and receive updates when new content is added (via RSS).

A screen shot of the new site (under development):

The screenshot shows the SASPAC website layout. At the top is a purple header with the 'Saspac' logo in white and the tagline 'The software for users of census and small area statistics'. Below the header is a navigation menu with links for Home, About, Software, Training, Data, Support, and Contact. The main content area features two blog posts. The first post is titled 'GROS Spring Census Consultation' (dated 22/02/2010) and discusses a consultation on 2011 Census data. It includes the logo of the General Register Office for Scotland and a note that the consultation is open to everyone, closing on Friday, 14th May 2010. The second post is 'Presentation at CLG LIS event' (dated 29/01/2010), mentioning a presentation at the CLG's Local Information Systems event. To the right of the posts are three sidebar widgets: 'WHAT IS SASPAC?' (describing the software), a search box, 'BROWSE POSTS:' (showing a calendar for March 2010), 'ARCHIVE OF POSTS:' (listing posts by month/year), and 'TAG CLOUD' (showing '2011 Consultation').

As always, please feel free to contact the SASPAC helpdesk (info@saspac.org/020 7983 4348) for more details relating to any of the above.

Briefings and analysis

The following Briefings are in production:

Census Information Note 2009-4 by Richard Cameron - this will give details of the Census Order and the range of reports published at the same time as the Census Order. It will indicate the final wording of the questions as they currently stand.

Housing tenure change 1961 to 2001 by Eileen Howes and James Gleeson - this Briefing will provide data on housing tenure from five Censuses and a series of maps showing how each tenure has changed over the last 40 years. The 1961 Census data is based on the London boroughs as they were created in 1964 and not on those current at the time of the 1961 Census. James Gleeson will provide the policy input to the Briefing.

Future planned Briefings:

Industry in London by Richard Cameron will analyse previously unavailable data from the 2001 Census on industry.

Training

Provision of training is currently under review because of Bill Armstrong's retirement. Training in SASPAC and the Census will continue but may be reduced in frequency until we get a bit nearer to the peak of activity at the time of the 2011 Census. If anyone has staff turnover and needs someone trained in the interim please contact any member of the Census or SASPAC Teams.

Paycheck data

Paycheck data for 2009 is still available from DMAG for £500 plus VAT per borough per year for which each borough gets both the standard and equivalised datasets for their own borough. The GLA is still paying a large part of the cost and we think that this is good value for money for the boroughs. This arrangement will be in place until December 2010. The conditions of use of this data are important - the data is for internal use only and can only be published with prior consent. Please check with either the GLA or with CACI before publishing any data. If any borough does not have a license to use the 2009 data they must delete all earlier copies of the data (if they had earlier versions). These are conditions imposed by CACI.

Census Users' Group Meetings

Meetings are held quarterly. The minutes of the meeting held on 9th December 2009 are in Appendix 1. The next meeting is scheduled for Tuesday 16th March 2010 at 2pm in Committee Room 2 at City Hall. Joe Traynor from ONS has been invited to speak at this meeting about the 2011 Census Output Consultation which ends on 26th March.

Dates have also been arranged for three subsequent meetings. They are on:

Wednesday 9th June 2010 at 2pm in Committee Room 2 at City Hall

Wednesday 8th September 2010 at 2pm in Committee Room 4 at City Hall

Tuesday 14th December 2010 at 2pm in Committee Room 2 at City Hall.

Census contacts

Appendix 2 gives the name and e-mail address of the main Census Contact in each borough and other relevant organisation. We have recently updated this so please check that we have the right person listed and that the e-mail address is correct. If you know of anyone else in your organisation who would like to receive Census Information Notes please let us have their e-mail address.

Minutes of Census Users' Group Meeting, 9th December 2009

Apologies were received from Joe Traynor who was unable to attend the meeting

1. Minutes of the last meeting and matters arising

No comments had been received on the minutes of the previous meeting held on 15 September. There were no matters arising.

2. GLA News

Andrew Collinge had been appointed as the Assistant Director for the Intelligence Unit. He would be taking up his post on 11 January 2010. A Communities of Practice London Census forum had been set up by the Census Team. It is hoped that this will complement the Census Users Group making it easier for members to exchange information and views.

3. 2011 Census Issues

Output Consultation

Joe Traynor was not able to attend the meeting to explain how he would consult users on Census outputs for 2011. The consultation was due to start on 14 December 2009.

In Joe Traynor's absence, RC explained that the method adopted for the consultation was a series of spreadsheets detailing the variables and breakdowns that were used in each table produced for 2001. These formed the basis for proposed outputs for 2011. The consultation would run until 26 March 2010.

Report on Census Rehearsal in Newham

ONS have stated that the purpose of the rehearsal was to test all the aspects of the Census collection, particularly:

The accuracy of the address register (by address checking);

The field operation including recruitment of enumerators, their training, and how successful they were;

The census form tracking system including systems for online completion of forms;

Community liaison including help for groups with access or language difficulties, liaison with local authorities and businesses, and publicity.

Michelle von Ahn (MvA) said that Newham had been chosen for the rehearsal partly because of the prevalence of hard-to-count groups including students, foreign-born persons, dwellings in multiple occupation and large households, but the rehearsal areas chosen were not those areas of Newham that had the highest incidence of hard-to-count groups.

Address register checking had found 779 anomalous records with the majority resolved easily.

Address checking by ONS found 1267 potentially new addresses, although since these addresses had not been shared with Newham it was not known how these were resolved. MvA reiterated the ongoing issue that (as things stood), boroughs' address registers would see no benefit from the address checking exercise.

Recruitment of field staff for Newham had proved difficult. The Census Area Manager initially appointed left before the rehearsal and the replacement was also retained for only a short period. Around a third of rehearsal staff were recruited from the local area, but some were recruited from as far away as Reading. MvA said that Newham had had no contact with Capita, and there was hence no opportunity to suggest people with local experience to them.

Field staff had received only generic training so there was no specific training for dealing with hard to count areas. Additionally the Census Area Manager had been refused this training.

Publicity for the rehearsal had been low-key in Newham. Some advertising had been seen and Linstock Communications had commissioned a rapper to produce a promo. Community engagement was mixed: events had been well attended and appreciated, but there was some concern that the message that had come across most strongly to some groups was that the rehearsal was not compulsory, and did not need to be completed.

The response rate for the rehearsal in Newham was 23 per cent at the time of the meeting after intense and extended follow-up. Internet completion had been very low, and MvA said that this route needed to be promoted to large households in particular as it removed the need for continuation questionnaires. In view of the very low response rate, there was concern that the Census Coverage Survey, however robust, would not produce good estimates for Newham and possibly some other boroughs in 2011. MvA said that Newham were planning to compare counts from administrative sources such as Council Tax, PLASC and Health records to validate the results of the Census. Another conclusion from the rehearsal was that boroughs should be prepared to engage in publicity and promotion of the census independently of ONS if necessary. It was noted however that ONS were due to produce a local authority publicity toolkit shortly.

On recruitment of the Census field workers, it was agreed that ONS and Capita would have to do more to recruit local people. There was then a discussion of how to communicate these issues to ONS. The usual channels would be the User Groups. Other possibilities included Barry Quirk, the regional meeting, and London Councils.

Address Checking Colin Rumsey raised the issue of hidden households: although checking would validate addresses there was no way to check what households were at the addresses before the census. Sue Kaminska commented that people living in commercial premises and unauthorised conversions might not be picked up even by the address check. It was thought

that some guidance was necessary, possibly from an LLPG custodian.

Census Order The Order had been published and debated in both houses of parliament. The explanatory memo published with the order contained some interesting details, and a large volume of supporting papers had been published at the same time, detailing the development of questions on ethnicity, religion, national identity and migration. RC would produce a Census Information Note early in January summarising these papers.

The next legislative stage in the process was publication of the Census Regulations setting out in detail how the Census would be conducted. This was expected in February or March 2010.

Workplace Zones A workplace zones methodology would be piloted in three or four areas including Tower Hamlets. If successful it was intended to produce data for 2011 Census first and possibly apply the same geography to 2001 output at a later stage.

Administrative Geographies The need for accurate ward data appeared to be accepted by ONS, although the current geography consultation still did not explicitly ask users what geography they wanted. It looked like there would be consultation on users' requirements for a Higher Level SOA, which could have implications for disclosure.

Outstanding Issues On Quality Assurance there would be ten pilot areas comparing population estimates with administrative data sources. It was not yet known what the ten areas were. EH would pass on any more information as it became known.

4. SASPAC update

The report on the users' survey was complete and available on the SASPAC website. Small Area Statistics for 1971 were now available via the latest version of SASPAC (version 9.07); both data and SASPAC 9.07 were on the website. The reconvened SASPAC advisory panel had met in October, notes from the meeting were also on the website. The membership of the group was rather lacking in local authorities. Any borough that wished to join the group would be welcome.

5. 2011 Census Consortium and Information Scheme timetable

EH said that the paper seeking Mayoral approval for the Scheme would be put up once Andrew Collinge arrived as Assistant Director. After this the stages would be to table a paper for London Congress in June 2010, followed by London Councils and borough chief executives.

6. DMAG briefings and analysis

Census Information Note CIN 2009-3 was available at the meeting; 2009-4 would be available in early January 2010. The next census briefing, Industry in London would be produced in the first half of 2010. RC would present some early findings from this briefing at the March 2010

Census Users' Group meeting.

7. Training news

Following the retirement of BA, the regular training sessions have had to be scaled back. If any members had training needs, please let the Census team know and we will try to arrange training as necessary.

8. Any other Business

There was none.

9. Dates of future meetings

The next meeting will be held on 16th March 2010. Meetings for the rest of 2010 will be held on:

Wednesday 9th June, 2pm, Committee Room 2

Wednesday 8th September, 2pm, Committee Room 4

Tuesday 14th December, 2pm, Committee Room 2.

Attendance at the Census Users' Group Meeting, 9 December 2009

Corporation of London	Stuart O'Callaghan
Barking and Dagenham	
Barnet	Sam Markey
Bexley	Taryn Eves
Brent	John Birkett
Bromley	
Camden	Neil Storer
Croydon	
Ealing	Elise Boyle
Enfield	Colin Rumsey
Greenwich	Janelle Foster
Hackney	Nina Emamy
Hammersmith and Fulham	Martin Robson
Haringey	
Harrow	Sue Kaminska
Havering	
Hillingdon	Pam Nash
	Mark Smith

Hounslow	
Islington	Dan Gargiulo
Kensington and Chelsea	Nicola Weaver
Kingston upon Thames	
Lambeth	Georges Sen-Gupta
Lewisham	Alec MacDonald
Merton	Ann Clarke
Newham	Michelle von Ahn
Redbridge	Frederick Nuer
Richmond upon Thames	
Southwark	
Sutton	
Tower Hamlets	Gameli Hoedoafia
Waltham Forest	
Wandsworth	Christine Cook
Westminster	Sally Melhuish
LHO	Paul De Ponte
TFL	
Metropolitan Police	
LDA	
London Councils	
LFEPa	
Office for National Statistics (LDA)	Lorraine Robinson
GLA	Eileen Howes
	Alan Lewis
	Richard Cameron
	John Hollis
	Baljit Bains
Apologies received	Paul Ekers
	Caroline Steenberg
	Matthew Waite
	Joe Traynor
	Giovanna Polato

Appendix 2

E-mail addresses of main Census Contacts

Metropolitan Police Service	Trevor Adams	Trevor.Adams@met.police.uk
Transport for London	Mike Collop	mikecollop@tfl.gov.uk
London Fire and Emergency Planning Authority	David Wyatt	david.wyatt@london-fire.gov.uk
London Development Agency	Matthew Waite	MatthewWaite@lda.gov.uk
London Councils	Stephen Doogue	stephen.doogue@londoncouncils.gov.uk
London Health Observatory	Justine Fitzpatrick	jfitzpatrick@lho.nhs.uk
Corporation of London	Stuart O'Callaghan	stuart.o'callaghan@cityoflondon.gov.uk
Barking and Dagenham	Chris Sale	csale@barking-dagenham.gov.uk
Barnet	Sam Markey	sam.markey@barnet.gov.uk
Bexley	Taryn Eves	taryn.eves@bexley.gov.uk
Brent	John Birkett	john.birkett@brent.gov.uk
Bromley	Doug Ogilvie	doug.ogilvie@bromley.gov.uk
Camden	Neil Storer	neil.storer@camden.gov.uk
Croydon	Dominick Mennie	dominick.mennie@croydon.gov.uk
Ealing	Naomi Grady	gradyn@ealing.gov.uk
Enfield	Colin Rumsey	colin.rumsey@enfield.gov.uk
Greenwich	Janelle Foster	janelle.foster@greenwich.gov.uk
Hackney	Nina Emamy	nina.emamy@hackney.gov.uk
Hammersmith and Fulham	Pat Cox	pat.cox@lbhf.gov.uk
Haringey	Craig Ferguson	craig.ferguson@haringey.gov.uk
Harrow	Sue Kaminska	sue.kaminska@harrow.gov.uk
Havering	Paul Ekers	paul.ekers@havering.gov.uk
Hillingdon	Richard Robbins	Rrobbins@hillingdon.gov.uk
Hounslow	GIS Support	gissupport@hounslow.gov.uk
Islington	Christina Briggs	christina.briggs@islington.gov.uk
Kensington and Chelsea	Nicola Weaver	nicola.weaver@rbkc.gov.uk
Kingston upon Thames	Peter Brunton	peter.brunton@rbk.kingston.gov.uk
Lambeth	Georges Sen-Gupta	GSenGupta@lambeth.gov.uk
Lewisham	Alec MacDonald	Alec.MacDonald@lewisham.gov.uk
Merton	Ann Clarke	ann.clarke@merton.gov.uk
Newham	Michelle von Ahn	michelle.von.ahn@newham.gov.uk
Redbridge	Frederick Nuer	Frederick.Nuer@redbridge.gov.uk
Richmond upon Thames	Fiona O'Toole	F.O'Toole@richmond.gov.uk
Southwark	Martin Cook	martin.cook@southwark.gov.uk
Sutton	Patrick Whitter	patrick.whitter@sutton.gov.uk
Tower Hamlets	Juanita Haynes	juanita.haynes@towerhamlets.gov.uk
Waltham Forest	Nick Shasha	nick.shasha@walthamforest.gov.uk
Wandsworth	Christine Cook	ccook@wandsworth.gov.uk
Westminster	Damian Highwood	dhighwood@westminster.gov.uk

Regular Briefings from the GLA Data Management and Analysis Group (DMAG)

Recent DMAG Briefings 2010:

2010-01	Claimant Count Model 2010	Richard Walker
2010-02	Census Information Note CIN 2010-1	Eileen Howes

Recent DMAG Briefings 2009:

2009-01	Claimant count model 2009: Technical Note	Social Exclusion Data Team
2009-02	GLA 2008 Round Projections	John Hollis and Jessica Chamberlain
2009-03	Greater London Demographic Review 2007	John Hollis
2009-04	Census Information Note 2009-1	Eileen Howes
2009-05	Census Information Note 2009-2	Eileen Howes
2009-06	2001 Census Consortium and Information Scheme	Eileen Howes
2009-07	2009 European election results for London	Gareth Piggott
2009-08	GLA 2008 Round Ethnic Group Population Projections	Ed Klodawski
2009-09	Demography Team Workplan 2009/10	Demography Team
2009-10	Education Team Workplan 2009/10	Education Team
2009-11	Social Exclusion Team Workplan 2009/10	Social Exclusion Team
2009-12	Urban Audit III: London and Other Large European Cities	Richard Walker
2009-13	Census Information Note 2009-3	Eileen Howes
2009-14	Census Workplan 2009-10	Eileen Howes
2009-15	SASPAC Workplan	Alan Lewis
2009-16	General Statistics Team Workplan	Gareth Piggott

A full list of DMAG Briefings is available to internal customers through the GLA Intranet; otherwise please contact dmag.info@london.gov.uk A CD containing PDF versions of the Briefings, or hard copies, can be provided.

Contact details for the Data Management and Analysis Group are as follows:

DMAG Contacts

Eileen Howes (020 7983 4657) is responsible for the work of the **Census, SASPAC and General Statistics Teams** and particularly for Census analysis. *eileen.howes@london.gov.uk*

John Hollis (020 7983 4604) is responsible for the work of the **Demography, Education and Social Exclusion Teams**, and particularly for demographic modelling. *john.hollis@london.gov.uk*

Gareth Baker (020 7983 4965) is the **GIS Manager** with responsibility for leading work on GI including strategy, the development of data holdings, analysis and dissemination. *gareth.baker@london.gov.uk*

Steve Forgan (020 7983 4185) is the **London Analyst Support Site (LASS) Manager** and is responsible for data exchange & analysis projects for crime reduction in London. *stephen.forgan@london.gov.uk*

Kelly Rump (020 7983 4655) is the **Business Coordinator**. *kelly.rump@london.gov.uk*

Census Team

Eileen Howes (020 7983 4657) is responsible for the work of the **Census, SASPAC and General Statistics Teams** and particularly for Census analysis. *eileen.howes@london.gov.uk*

Richard Cameron (020 7983 4473) works in the **Census Team**. *richard.cameron@london.gov.uk*

SASPAC

Alan Lewis (020 7983 4348) leads on the SASPAC project. *alan.lewis@london.gov.uk*

General Statistics Team

Gareth Piggott (020 7983 4327) works in the **General Statistics Team** with particular responsibilities for Focus on London and Compendia. *gareth.piggott@london.gov.uk*

Please use the above descriptions in deciding whom to contact to assist you with your information needs. For further details of DMAG staff please contact Kelly Rump at *kelly.rump@london.gov*