



Fig. 4.8.5.2 East Block South Façade detail view - bottom, middle & top



4.8 TYPICAL FAÇADE MODULATION



Fig. 4.8.5.3 North Façade detail view





Fig. 4.8.5.4 South Façade detail view

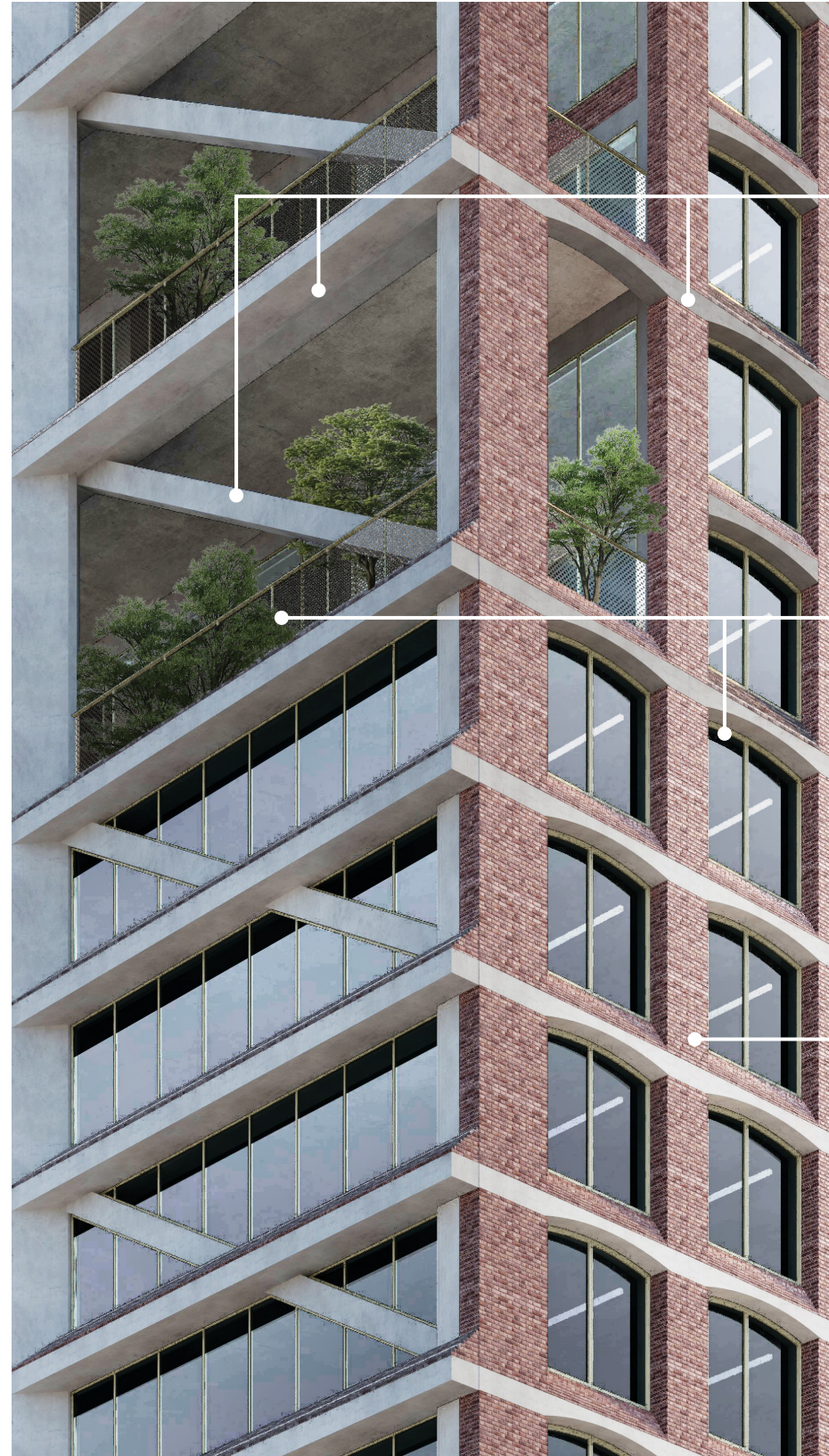


## 4.9 MATERIALITY

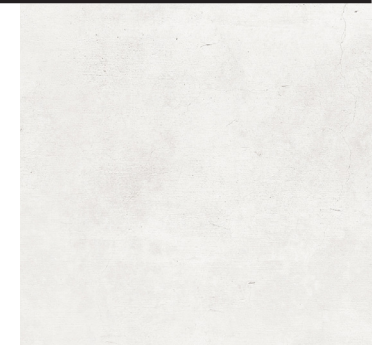
The material palette used throughout the scheme seeks to reinforce the building's relationship with its surroundings. With many of the contextual buildings, the majority of façades are clad with brick, providing a sense of solidity and permanence.

Continuous concrete lintels enrich the façades, introducing rhythm and articulation, whilst the inclusion of gentle arches bring movement and variety to the modular organisation.

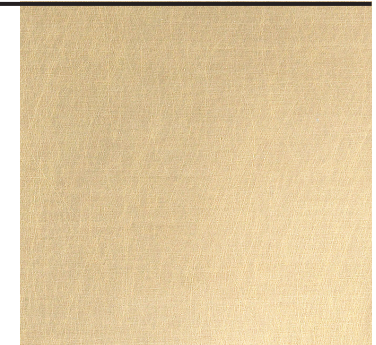
These lintels are directly inspired by the window heads present on many of the area's contextual. Additionally, bronze coloured metalwork is proposed for window frames and balustrades.



**CONCRETE - SOFT FINISH**  
Window lintel; Soffits; Bracing



**BRASS FINISH METALWORK**  
Window frames; Railings



**BRICK**  
Outer façade

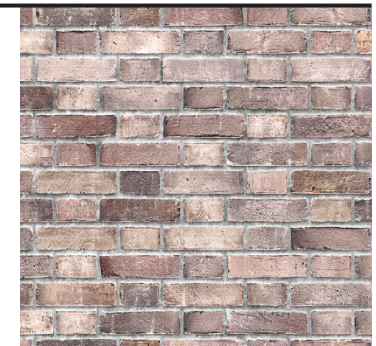


Fig. 4.9 South - West Façade detail view



# 4.10 DETAILING

When experienced from proximity, the building reveals a refined and rich level of detailing. Several architectural details prevalent in the surrounding built environment were used as starting point for the design of the proposed façades .

Window heads, continuous lintels, intricate brickwork and industrial façades with large openings were each reinterpreted in a contemporary design that combines context with innovation.

In detailing the façades, materials often come together to provide a unique combination of colours and textures. Variation in the articulation of the modules, in combination with the use of different depths, generates plays of light and shadow that emphasize the diverse detailing across the scheme.



Fig. 4.10.1 Window on Electric Avenue



Fig. 4.10.2 Prince of Wales building façade detail



Fig. 4.10.3 Window on Vining Street



Fig. 4.10.4 West Block South Façade detail view



Fig. 4.10.5 West Façade detail view



Fig. 4.10.6 East Block South Façade detail view



## 4.11 SIGNAGE

The façade at ground a has been designed to accommodate appropriate signage to each retail unit. Every module has a metal band with an upper component that can be customised by each unit tenant.

This strategy has been used for the inside façade of the units, providing a higher degree of visibility. In the event of retail areas being occupied by more than one client, this feature will allow for clear differentiation between each of the entrances.

The allocation of a specific area for signage on the façade allows easy maintenance or replacement when the tenancy of the retail spaces changes.



Fig. 4.11 Internal Market Façade indicative signage diagram



Proposed Internal Signage