



Fig. 4.8.2.4 West Block South Façade detail view - top

4.8 TYPICAL FAÇADE MODULATION

4.8.3 WEST BLOCK - NORTH FAÇADE

Bottom - Ground to 3rd Floor

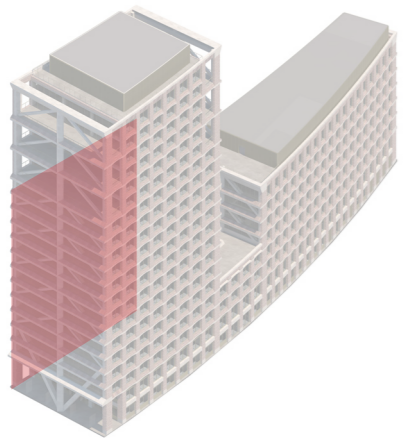
The organisation of the bottom north façade is the same as applied to the bottom south façade, however there is one substantial difference between the two façades.

The glazing is flushed with the brick in order to maximize the solar gain, a solution that eliminates the whole depth of the façade making it almost like a continuous flat sheet that provides a different experience compared to the south side.

Middle - 4th to 13th Floor

The principle of having a flat façade seen in the bottom is applied to the middle portion of the façade as well. As for the bottom the organisation and modulation of the north façade is the same as the south façade. The glazing however is flushed with the brick in order to minimize shading and allow more light into the building considering that on the north façade there is no direct sun exposure.

This architectural solution allows for a variation on the stepped brick apron which is flipped upside down to align with the glazing at the top. In this way the apron is more visible from street level and creates a different relationship with the concrete lintel and a different type of shadows compared to the south façade.



Material Key:

- 1 Brick
- 2 Glazing unit in bronze coloured frame
- 3 Concrete
- 4 Bronze coloured balustrade/metal work
- 5 Bronze coloured balustrade with solid wind screen

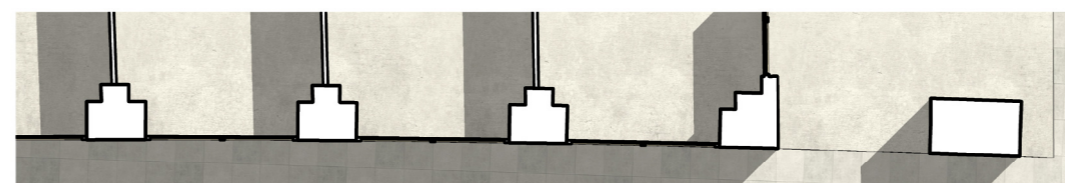
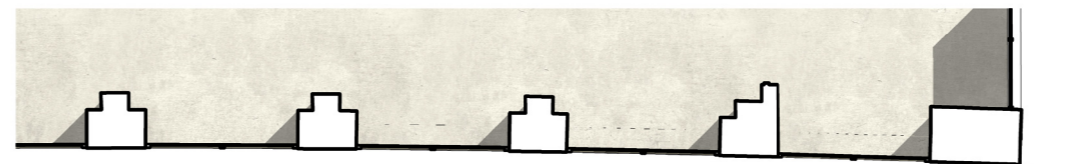


Fig. 4.8.3.1 West Block North Façade - typical plan, section & elevation - bottom & middle



Fig. 4.8.3.2 West Block North Façade detail view - bottom & middle

4.8 TYPICAL FAÇADE MODULATION

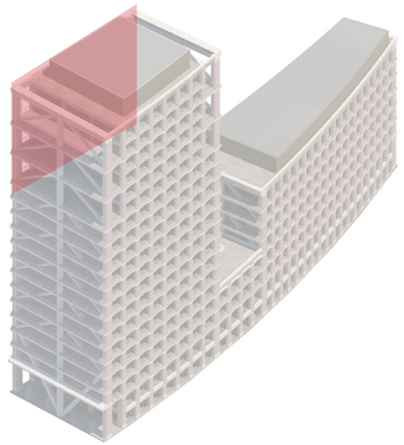
4.8.3 WEST BLOCK - NORTH FAÇADE

Top - 14th to 19th Floor:

As for the bottom and the middle portion, the top part of the north façade reflects the same organisation of the south façade. The new architectural quality introduced in the lower portion is maintained here.

As for the south façade, the last module of the top arbitrable floor is a thicker linear stepped brick apron, which is tilted upside down compared to others in the façade, creating a different condition with the concrete spandrel at the top.

The façade is concluded by the metal clad box on the roof.



Material Key:

- 1 Brick
- 2 Glazing unit in bronze coloured frame
- 3 Concrete
- 4 Bronze coloured balustrade/metal work
- 5 Bronze coloured balustrade with solid wind screen

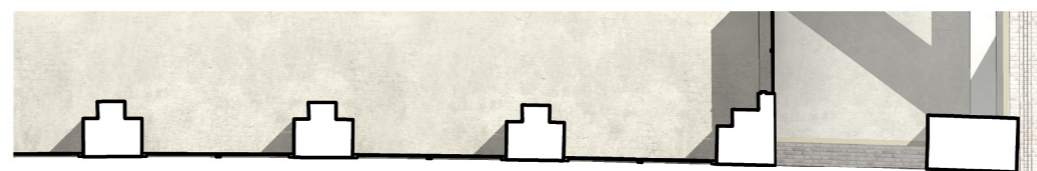


Fig. 4.8.3.3 West Block North Façade - typical plan, section & elevation - top



Fig. 4.8.3.4 West Block North Façade detail view - top

4.8 TYPICAL FAÇADE MODULATION

4.8.4 EAST BLOCK - SOUTH FAÇADE

Bottom - Ground to 3rd Floor

The bottom part of the south façade of the east block is organized and composed in the same way as the one of the west block.

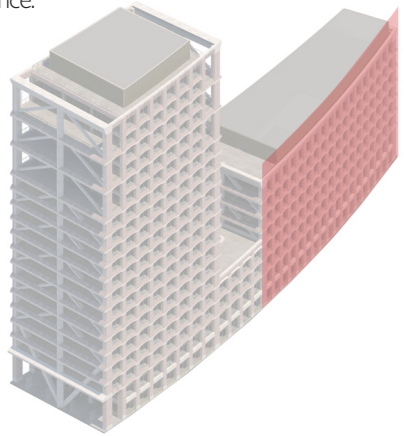
The main difference consists in the size of the module which is smaller compared to the one on the west block. A smaller module absorbs and emphasises the curvilinear shape of the site which is more marked in the eastern part.

Middle - 4th to 7th Floor

As for the bottom part, this portion of the façade is also structured in the same way of the west block. The smaller module also emphasised by the arched framed shape of the concrete lintel which appear more marked even if it maintains the same proportion of the one on the west block.

Top - 8th Floor

The reduced height of the east block informs a different treatment of the top part of the façade, which omits the double height terraces. The west block is a thicker, linear stepped brick apron capped with a concrete spandrel finishes the façade. The metal clad box on the roof adapts its proportion to the east block assuming a more horizontal appearance.



Material Key:

- 1 Brick
- 2 Glazing unit in bronze coloured frame
- 3 Concrete
- 4 Bronze coloured balustrade/metal work
- 5 Bronze coloured balustrade with solid wind screen

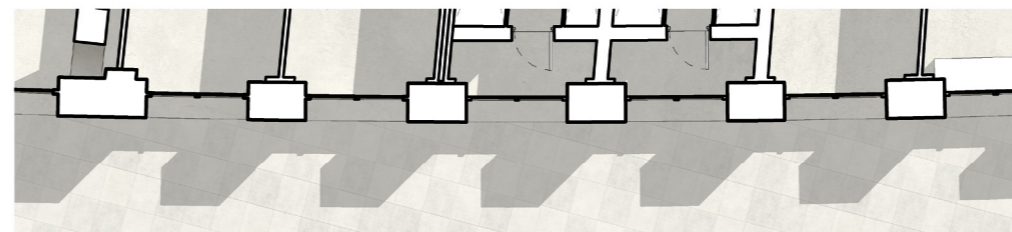


Fig. 4.8.4.1 East Block South Façade - typical plan, section & elevation - bottom, middle & top



Fig. 4.8.4.2 East Block South Façade detail view - bottom, middle & top

4.8 TYPICAL FAÇADE MODULATION

4.8.5 EAST BLOCK - NORTH FAÇADE

Bottom - Ground to 3rd Floor

The bottom part of the north façade of the east block is organized and composed in the same way as the one of the west block.

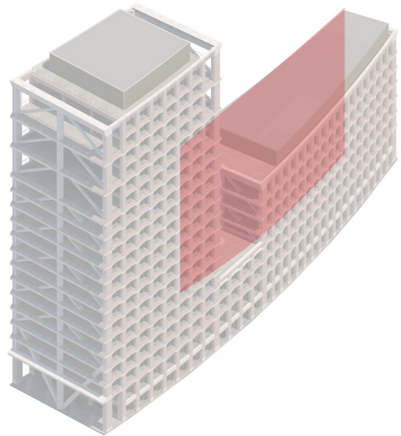
Again, the only difference consists in the size of the module which is smaller compared to the one on the west block. A smaller module along with the glazing flushed to the brick emphasises the concave movement generated by the shape of the site.

Middle - 4th to 7th Floor

Similarly to the bottom part, this portion of the façade is also structured in the same way of the west block. The smaller module also emphasize the arched shape of the concrete lintel which appear more marked even if it maintains the same proportion of the one on the west block.

Top - 8th Floor

As for the west block, a thicker, a linear stepped brick apron capped with a concrete spandrel finishes the façade. The metal clad box on the roof, with its horizontal proportion, displays a new feature not visible anywhere else which is a long horizontal glazed opening that manifests the presence of the restaurant inside.



Material Key:

- 1 Brick
- 2 Glazing unit in bronze coloured frame
- 3 Concrete
- 4 Bronze coloured balustrade/metal work
- 5 Bronze coloured balustrade with solid wind screen



Fig. 4.8.5.1 East Block South Façade - typical plan, section & elevation - bottom, middle & top